

## General Info

Surat Thani, THA

N 09° 32.9' E100° 03.8' Mag Var: 0.0°W

Elevation: 64'

Public, Control Tower, IFR, No Fee, Rotating Beacon, No Customs

Fuel: Jet A-1

Time Zone Info: GMT+7:00 no DST

## Runway Info

Runway 17-35 6759' x 148' asphalt

Runway 17 (174.0°M) TDZE 43'

Lights: Edge, Centerline

Displaced Threshold Distance 853'

Stopway Distance 197'

Runway 35 (354.0°M) TDZE 56'

Lights: Edge, Centerline

Displaced Threshold Distance 984'

Stopway Distance 148'

## Communications Info

ATIS **128.6**

Samui Tower **118.9**

Samui Approach Control **129.6**

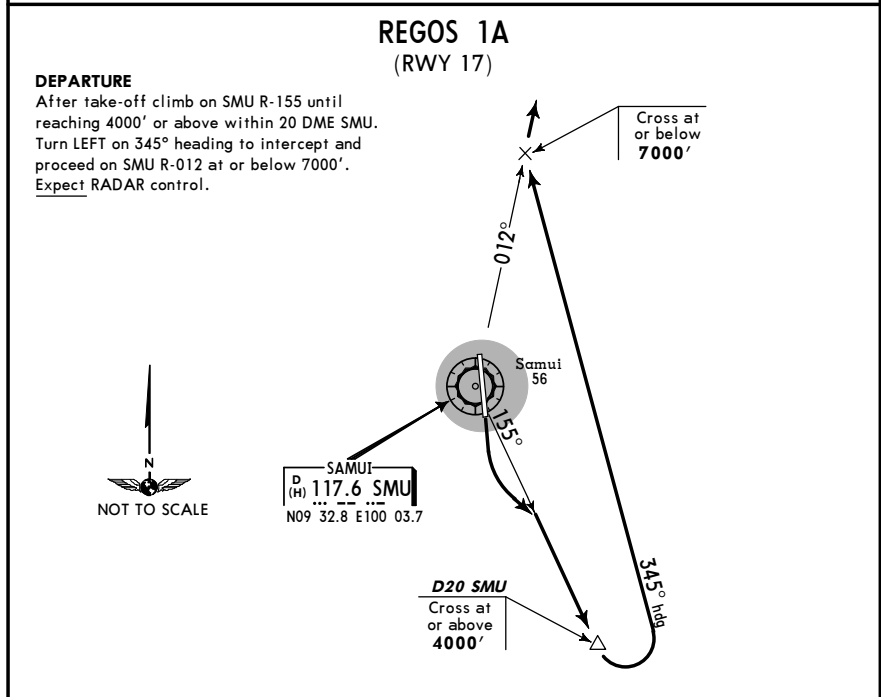
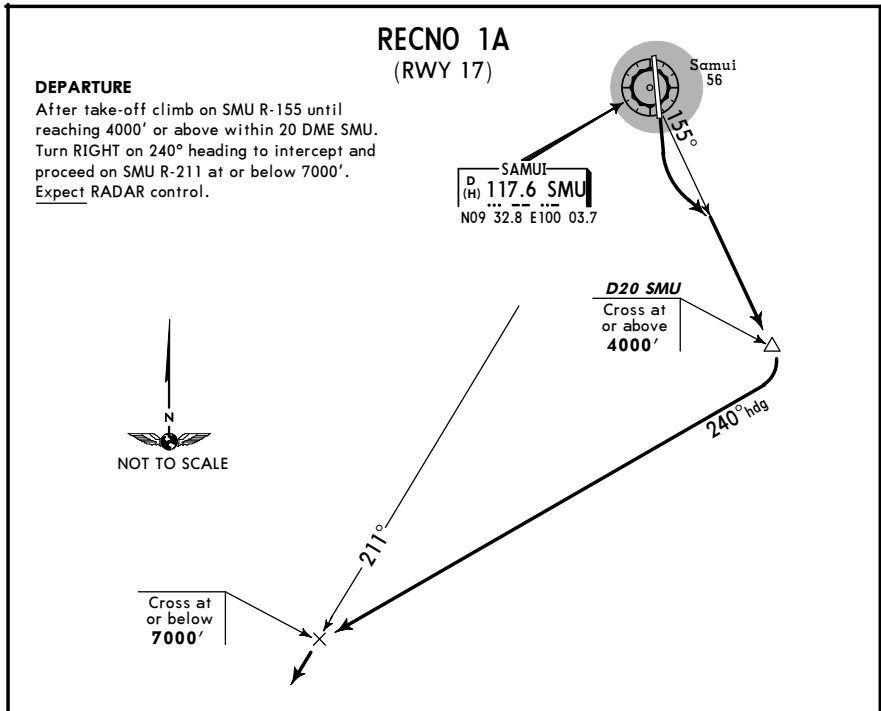
Samui Approach Control **119.75** Secondary

## Notebook Info

**SID**

**JEPPESEN** 8 OCT 99 **(20-3)**

**SURAT THANI, THAILAND**  
 SAMUI



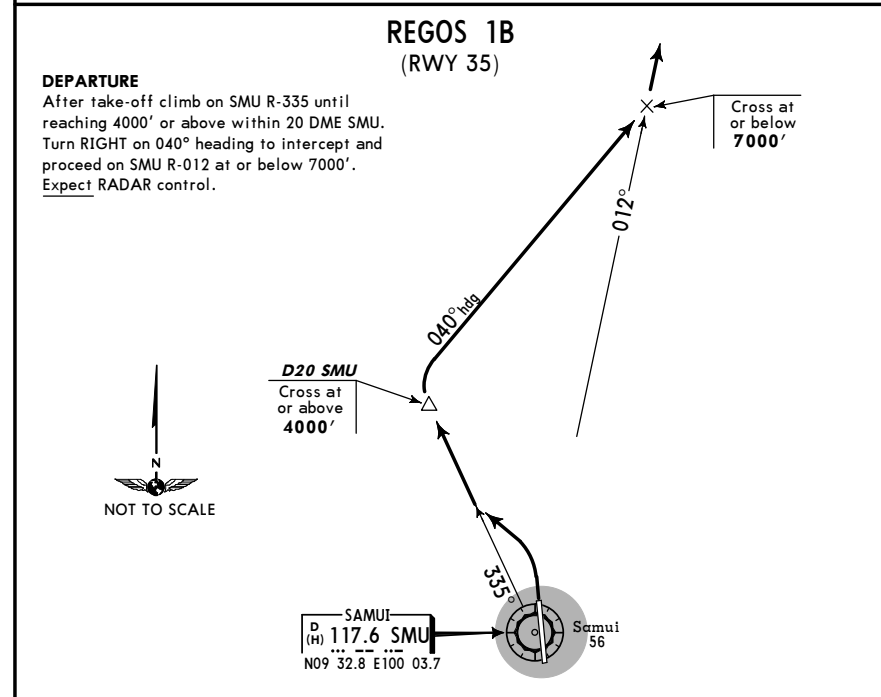
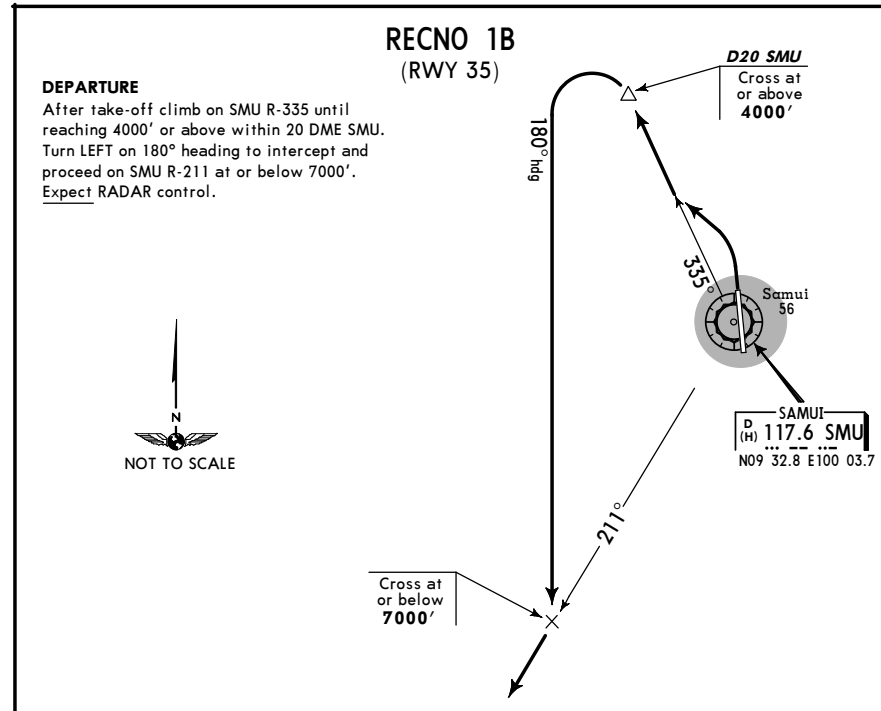
CHANGES: New departures.

© JEPPESEN SANDERSON, INC., 1999. ALL RIGHTS RESERVED.

**SID**

**JEPPESEN** 8 OCT 99 **(20-3A)**

**SURAT THANI, THAILAND**  
 SAMUI



CHANGES: New departures.

© JEPPESEN SANDERSON, INC., 1999. ALL RIGHTS RESERVED.

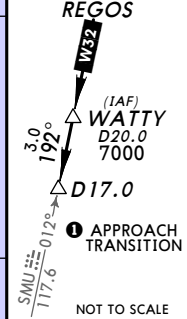
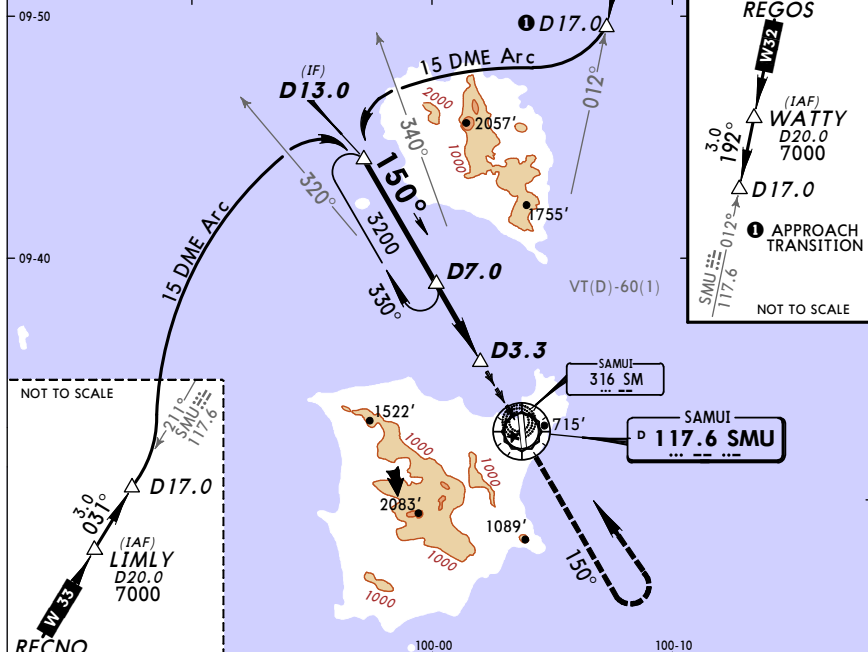
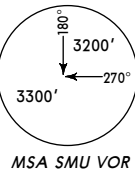
VTSM/USM  
SAMUI

JEPPESEN SURAT THANI, THAILAND  
10 SEP 04 (23-1) CAT A, B & C VOR DME Rwy 17

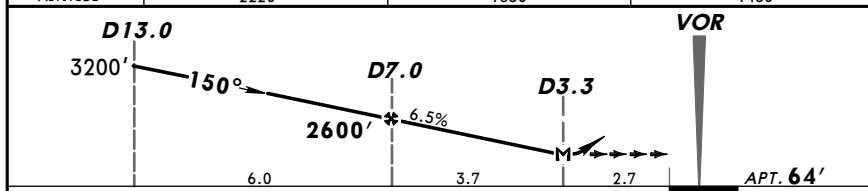
*ATIS 128.6		*SAMUI Approach (R) 129.6		*SAMUI Tower 118.9	
VOR SMU 117.6	Final Apch Crs 150°	Minimum Alt D7.0 2600' (2536')	MDA(H) Refer to Minimums	Apt Elev 64'	

**MISSED APCH:** Climb on track 150° to the SMU VOR, then climb outbound on SMU VOR R-150 to 3200', then turn LEFT back to D7.0 at 3200' and hold.

Alt Set: hPa Apt Elev: 2 hPa Trans level: By ATC Trans alt: 7000'  
1. Required VMC condition. 2. This procedure can not be used when VT(D)-60(2) is activated.



SMU DME	6.0	5.0	4.0
ALTITUDE	2220'	1830'	1430'

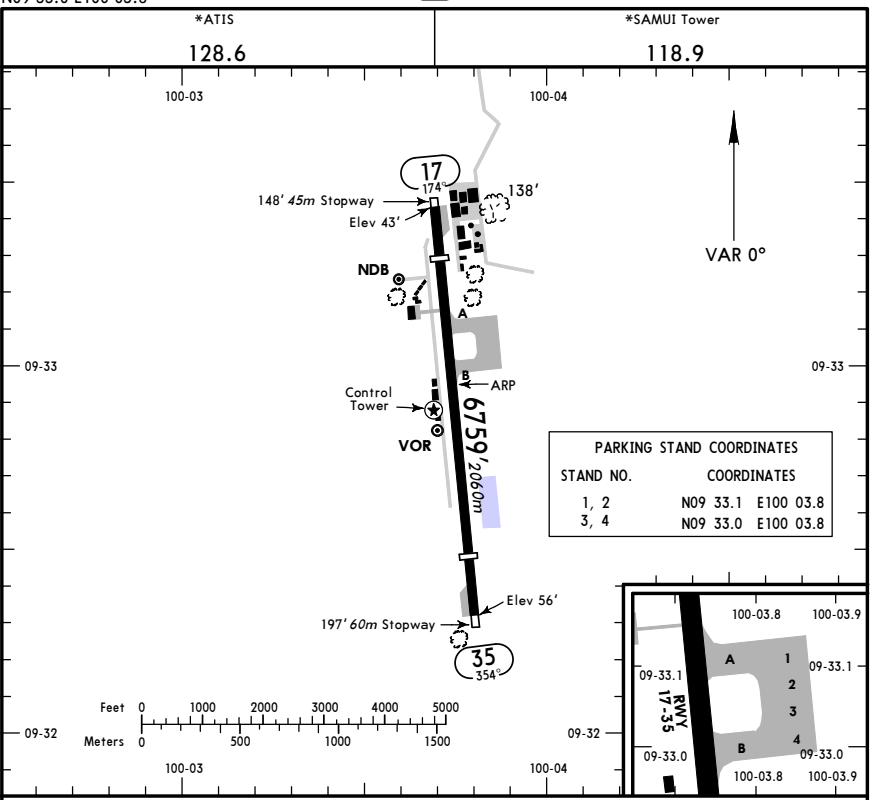


Gnd speed-Kts	70	90	100	120	140	160	PAPI-R	150° track	SMU 117.6
Descent Gradient	461	592	658	790	922	1053			

STRAIGHT-IN LANDING RWY 17			CIRCLE-TO-LAND		
A B C D	NA	Max Kts	MDA(H)		
		100	1200' (1136')-5000m		
		135			
		180			
D		NA			

VTSM/USM  
Apt Elev 64'

JEPPESEN SURAT THANI, THAILAND  
10 SEP 04 (23-1) SAMUI



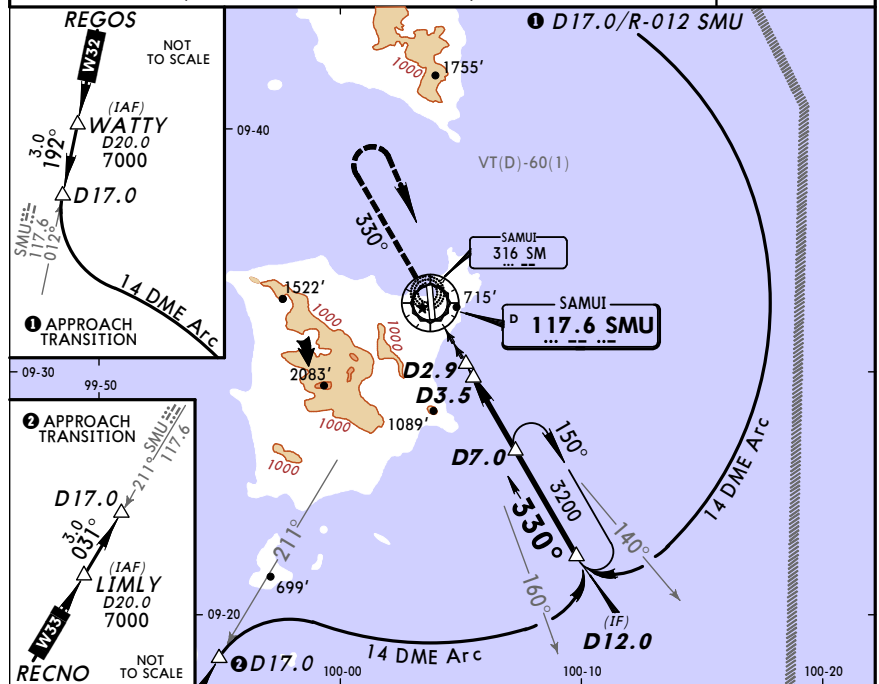
RWY	ADDITIONAL RUNWAY INFORMATION				USABLE LENGTHS			
	LANDING BEYOND		TAKE-OFF		Threshold	Glide Slope	TAKE-OFF	WIDTH
17	RL (60m)	CL PAPI-R (angle 3.00°)	5906'	1800m				148'
35	RL (60m)	CL PAPI-L (angle 3.00°)	5774'	1760m				45m

TAKE-OFF	
AIR CARRIER (JAA)	
All Rwys	
LVP must be in Force	RCLM (DAY only) or RL
A	RVR 250m
B	RVR 400m
C	
D	RVR 300m

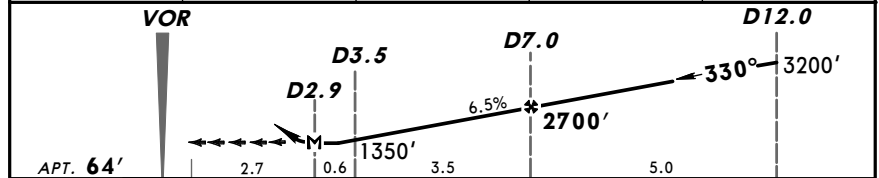
**VTSM/USM  
SAMUI**

**JEPPESEN SURAT THANI, THAILAND**  
10 SEP 04 (23-2) CAT A, B & C VOR DME Rwy 35

*ATIS 128.6		*SAMUI Approach (R) 129.6		*SAMUI Tower 118.9
VOR SMU <b>117.6</b>	Final Apch Crs <b>330°</b>	Minimum Alt <b>D7.0 2700' (2636')</b>	MDA(H) Refer to Minimums	Apt Elev <b>64'</b>
MISSED APCH: Climb on track 330° to the SMU VOR, then climb outbound on SMU VOR R-330 to 3200', then turn RIGHT back to D7.0 at 3200' and hold.				
Alt Set: hPa		Apt Elev: 2 hPa		Trans level: By ATC
			Trans alt: 7000'	MSA SMU VOR



SMU DME	3.0	4.0	5.0	6.0
ALTITUDE	1150'	1550'	1940'	2340'



Gnd speed-Kts	70	90	100	120	140	160		
Descent Gradient 6.5%	461	592	658	790	922	1053	PAPI-L	↑ on track 330° SMU 117.6
MAP at D2.9								

STRAIGHT-IN LANDING RWY 35		CIRCLE-TO-LAND	
A	NA	Max Kts	MDA(H)
B		100	1200' (1136')-5000m
C		135	
D		180	
D	NA		