

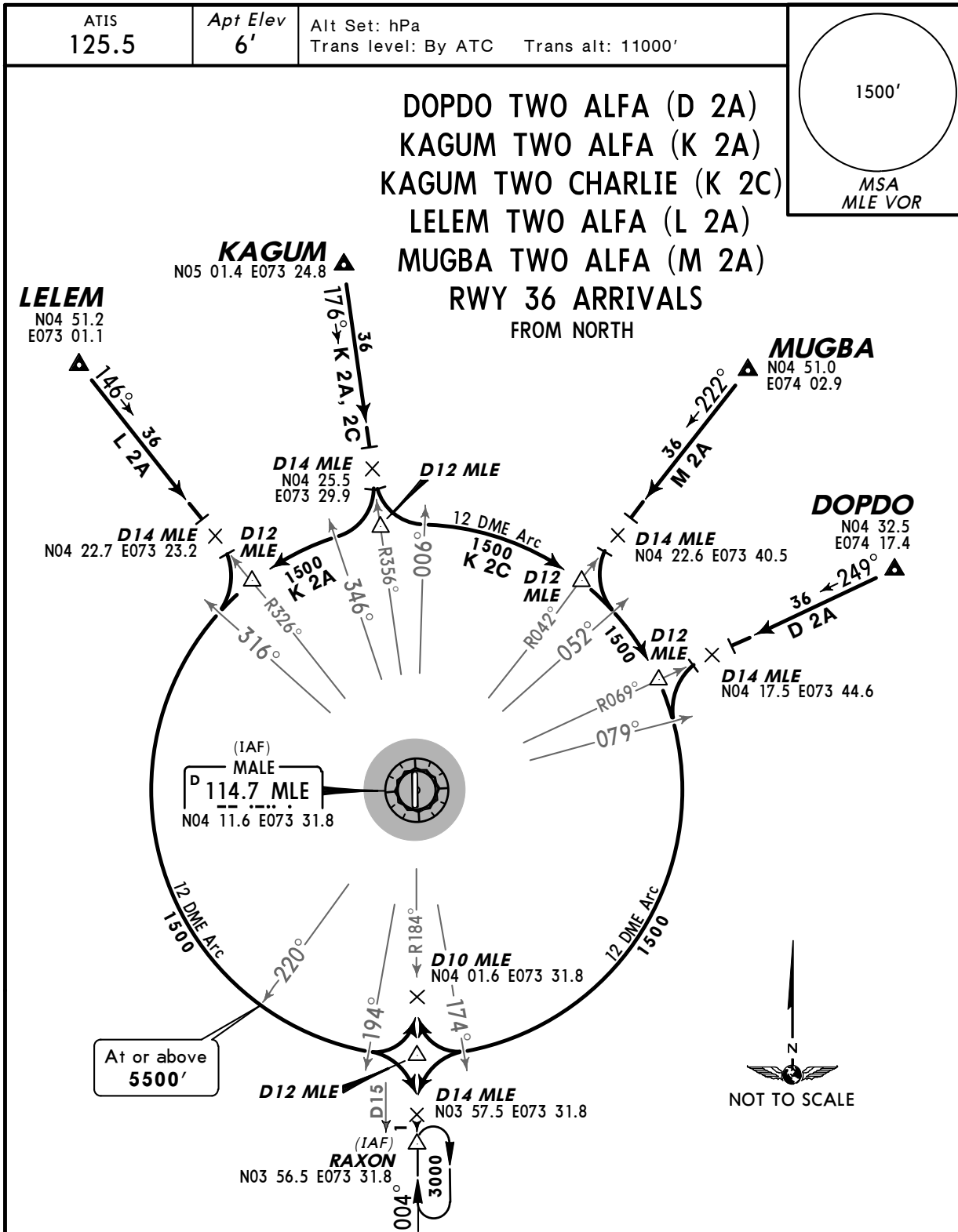
VRMM/MLE
MALE INTL

JEPPESEN

MALE, MALDIVES

13 FEB 09 **10-2**

STAR



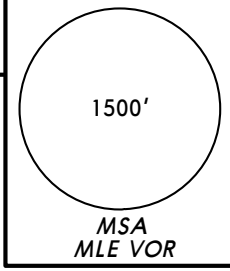
STAR	INITIAL ROUTING
D 2A	To D14 MLE, turn LEFT, intercept 12 DME arc at MLE R-079.
K 2A	To D14 MLE, turn RIGHT, intercept 12 DME arc at MLE R-346.
K 2C	To D14 MLE, turn LEFT, intercept 12 DME arc at MLE R-006.
L 2A	To D14 MLE, turn RIGHT, intercept 12 DME arc at MLE R-316.
M 2A	To D14 MLE, turn LEFT, intercept 12 DME arc at MLE R-052.
STAR	12 DME ARC SEGMENT
D 2A, K 2C M 2A	Proceed along 12 DME arc to MLE R-174. If no delay is expected turn RIGHT, intercept MLE R-184 inbound at D10 MLE. If holding is required turn LEFT, intercept MLE R-184 at D14 MLE, enter holding over RAXON.
K 2A, L 2A	Proceed along 12 DME arc to MLE R-194. If no delay is expected turn LEFT, intercept MLE R-184 inbound at D10 MLE. If holding is required turn RIGHT, intercept MLE R-184 at D14 MLE, enter holding over RAXON.

VRMM/MLE
MALE INTL

JEPPESEN
13 FEB 09 **(10-2A)**

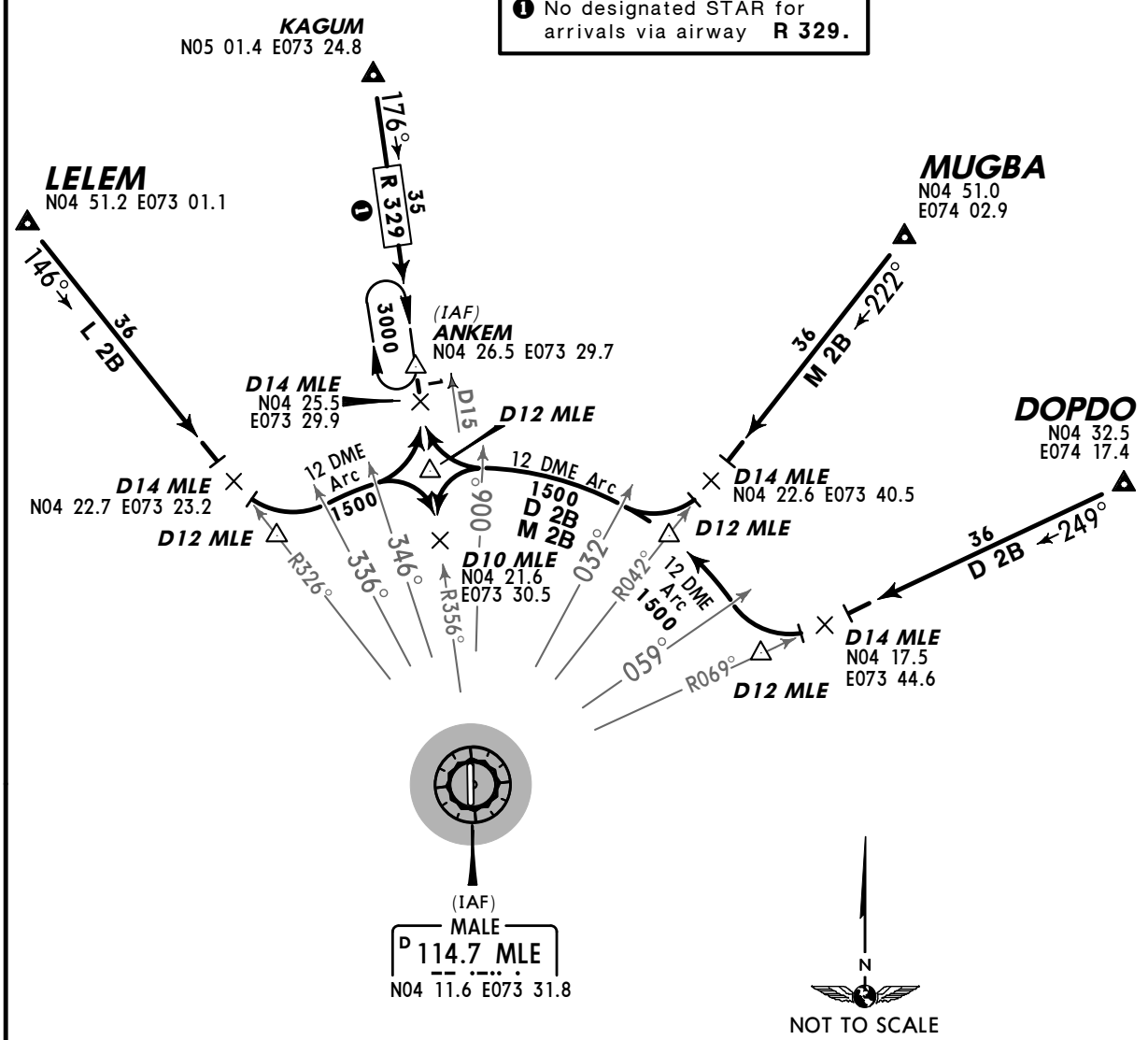
MALE, MALDIVES
STAR

ATIS 125.5	Apt Elev 6'	Alt Set: hPa Trans level: By ATC Trans alt: 11000'
----------------------	-----------------------	--



DOPDO TWO BRAVO (D 2B)
LELEM TWO BRAVO (L 2B)
MUGBA TWO BRAVO (M 2B)
RWY 18 ARRIVALS
FROM NORTH

1 No designated STAR for arrivals via airway **R 329**.



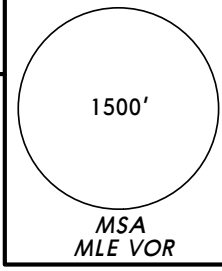
STAR	INITIAL ROUTING
D 2B	To D14 MLE, turn RIGHT, intercept 12 DME arc at MLE R-059.
L 2B	To D14 MLE, turn LEFT, intercept 12 DME arc at MLE R-336.
M 2B	To D14 MLE, turn RIGHT, intercept 12 DME arc at MLE R-032.
STAR	12 DME ARC SEGMENT
D 2B, M 2B	Proceed along 12 DME arc to MLE R-000. If no delay is expected turn LEFT, intercept MLE R-356 inbound at D10 MLE. If holding is required turn RIGHT, intercept MLE R-356 at D14 MLE, enter holding over ANKEM.
L 2B	Proceed along 12 DME arc to MLE R-346. If no delay is expected turn RIGHT, intercept MLE R-356 inbound at D10 MLE. If holding is required turn LEFT, intercept MLE R-356 at D14 MLE, enter holding over ANKEM.

VRMM/MLE
MALE INTL

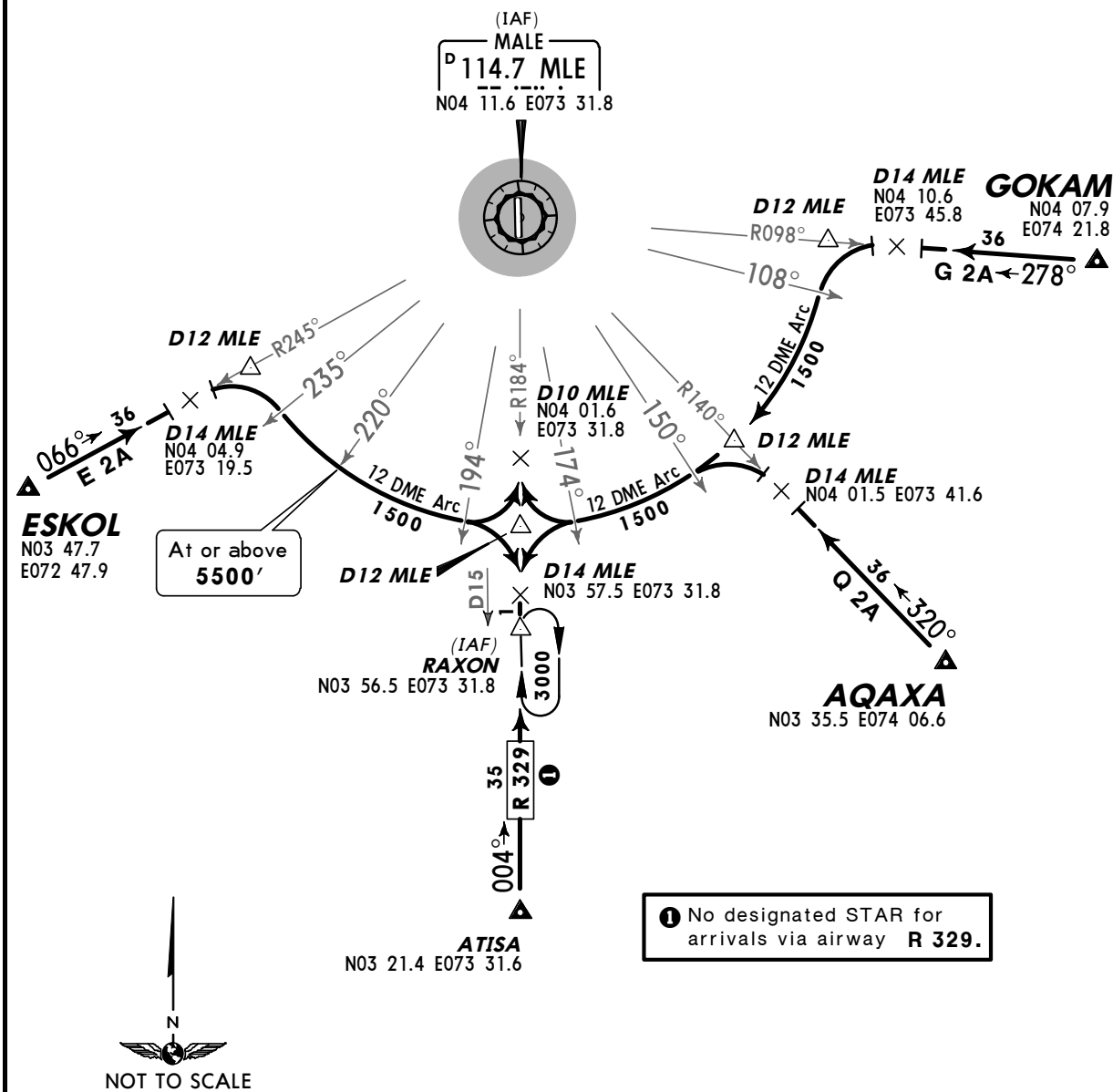
JEPPESEN
 13 FEB 09 **(10-2B)**

MALE, MALDIVES
STAR

ATIS 125.5	Apt Elev 6'	Alt Set: hPa Trans level: By ATC Trans alt: 11000'
---------------	----------------	--



AQAXA TWO ALFA (Q 2A)
ESKOL TWO ALFA (E 2A)
GOKAM TWO ALFA (G 2A)
RWY 36 ARRIVALS
FROM EAST & SOUTH

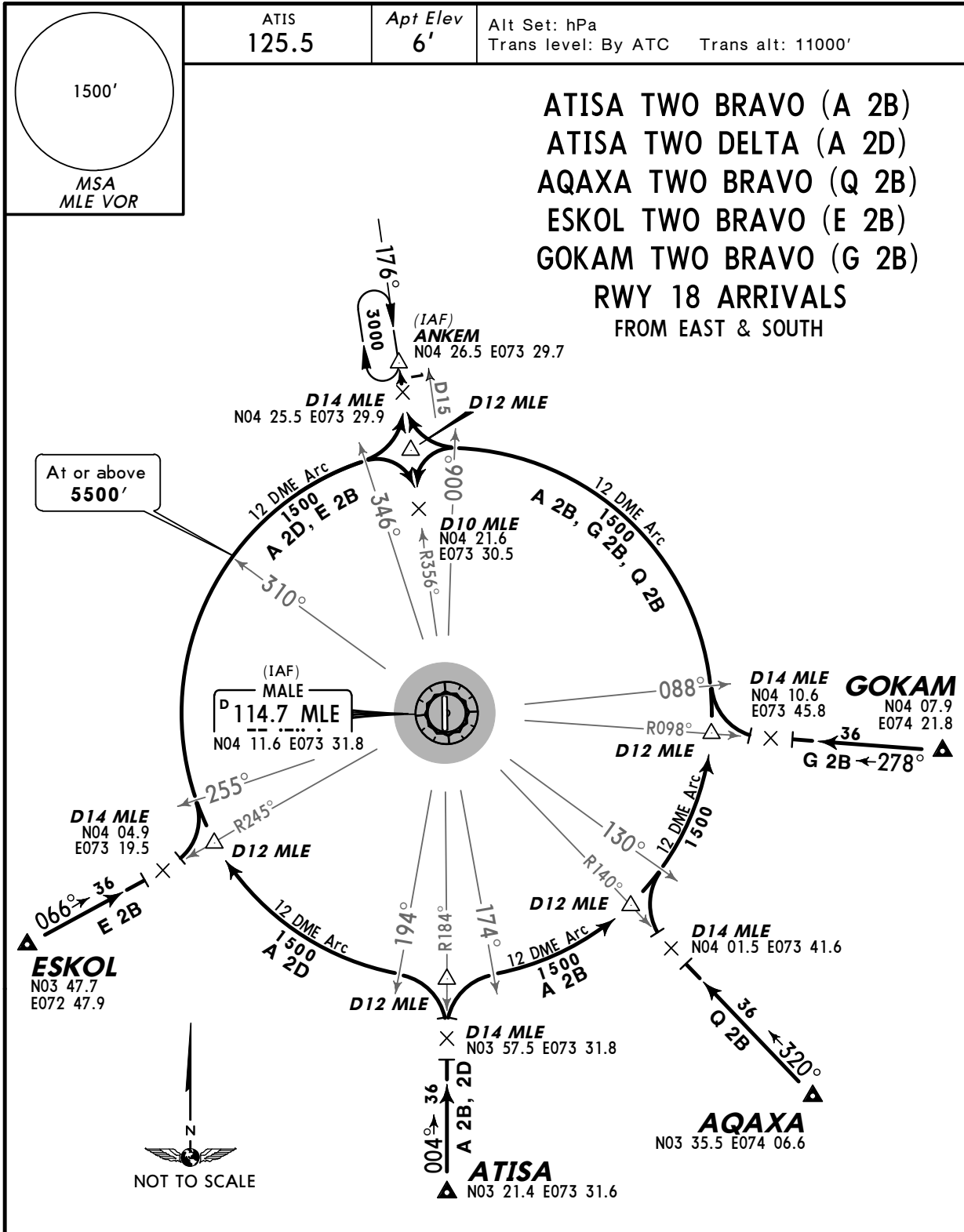


STAR	INITIAL ROUTING
E 2A	To D14 MLE, turn RIGHT, intercept 12 DME arc at MLE R-235.
G 2A	To D14 MLE, turn LEFT, intercept 12 DME arc at MLE R-108.
Q 2A	To D14 MLE, turn LEFT, intercept 12 DME arc at MLE R-150.
STAR	12 DME ARC SEGMENT
G 2A, Q 2A	Proceed along 12 DME arc to MLE R-174. If no delay is expected turn RIGHT, intercept MLE R-184 inbound at D10 MLE. If holding is required turn LEFT, intercept MLE R-184 at D14 MLE, enter holding over RAXON.
E 2A	Proceed along 12 DME arc to MLE R-194. If no delay is expected turn LEFT, intercept MLE R-184 inbound at D10 MLE. If holding is required turn RIGHT, intercept MLE R-184 at D14 MLE, enter holding over RAXON.

VRMM/MLE
MALE INTL

JEPPESEN
13 FEB 09 **(10-2C)**

MALE, MALDIVES
STAR



STAR	INITIAL ROUTING
A 2B	To D14 MLE, turn RIGHT, intercept 12 DME arc at MLE R-174.
A 2D	To D14 MLE, turn LEFT, intercept 12 DME arc at MLE R-194.
E 2B	To D14 MLE, turn LEFT, intercept 12 DME arc at MLE R-255.
G 2B	To D14 MLE, turn RIGHT, intercept 12 DME arc at MLE R-088.
Q 2B	To D14 MLE, turn RIGHT, intercept 12 DME arc at MLE R-130.
STAR	12 DME ARC SEGMENT
A 2B, G 2B Q 2B	Proceed along 12 DME arc to MLE R-006. If no delay is expected turn LEFT, intercept MLE R-356 inbound at D10 MLE. If holding is required turn RIGHT, intercept MLE R-356 at D14 MLE, enter holding over ANKEM.
A 2D, E 2B	Proceed along 12 DME arc to MLE R-346. If no delay is expected turn RIGHT, intercept MLE R-356 inbound at D10 MLE. If holding is required turn LEFT, intercept MLE R-356 at D14 MLE, enter holding over ANKEM.

VRMM/MLE
MALE INTL

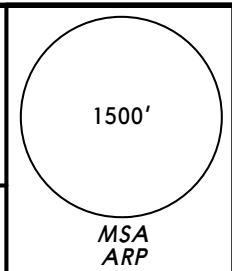
JEPPESEN
 16 JUL 10 **(10-2D)** **Eff 29 Jul**

MALE, MALDIVES
RNAV STAR

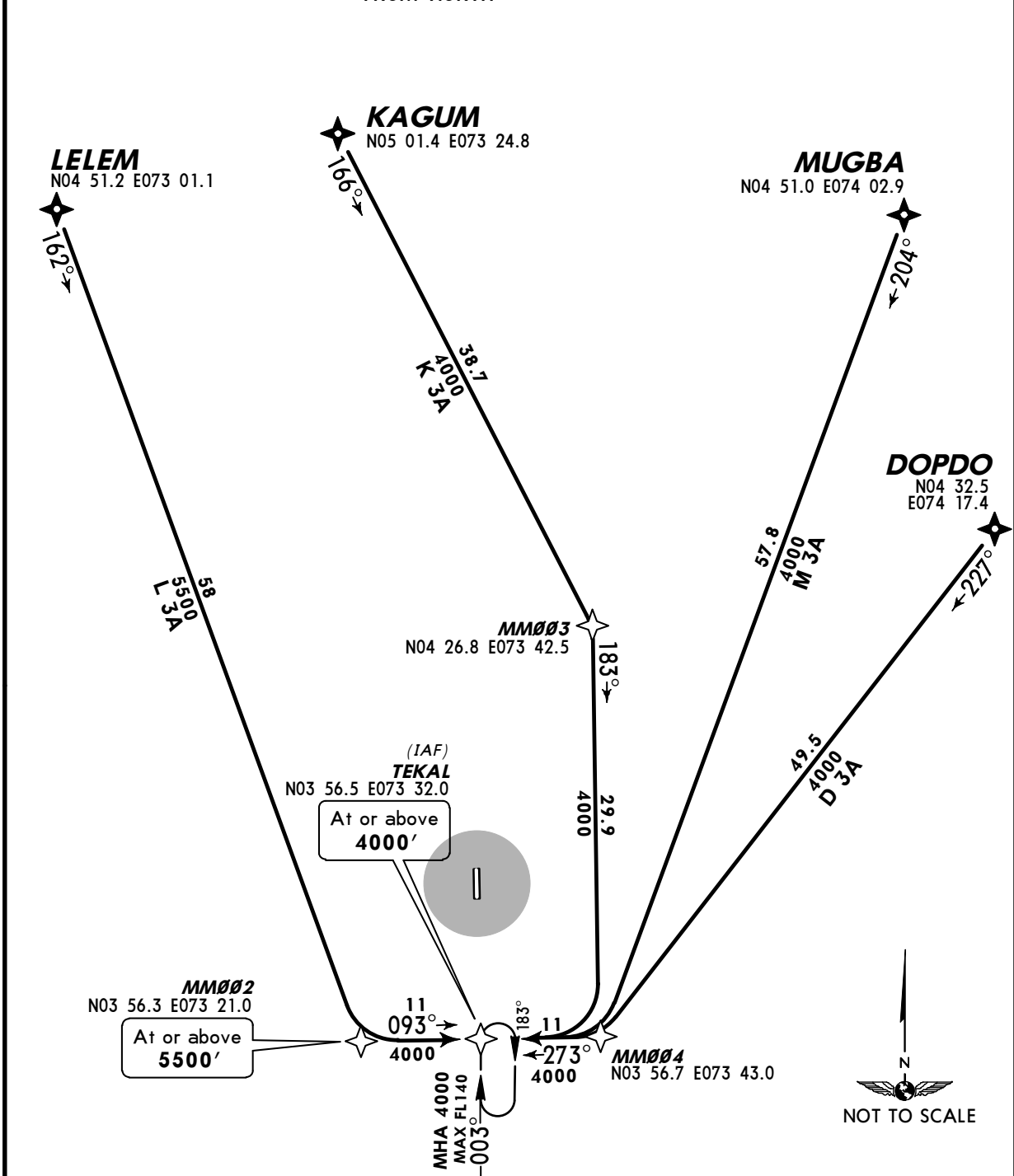
ATIS
125.5

Apt Elev
6'

Alt Set: hPa
 Trans level: By ATC Trans alt: 11000'
 1. Request and obtain ATC approval before passing
 TMA boundary.
 2. Expect radar vectoring.
 3. If unable to comply inform ATC.



DOPDO 3A (D 3A), KAGUM 3A (K 3A)
LELEM 3A (L 3A), MUGBA 3A (M 3A)
RWY 36 RNAV ARRIVALS
 RNAV 1 (GNSS REQUIRED)
 FROM NORTH



STAR	ROUTING
D 3A	DOPDO - MM004 - TEKAL (4000'+).
K 3A	KAGUM - MM003 - MM004 - TEKAL (4000'+).
L 3A	LELEM - MM002 (5500'+) - TEKAL (4000'+).
M 3A	MUGBA - MM004 - TEKAL (4000'+).

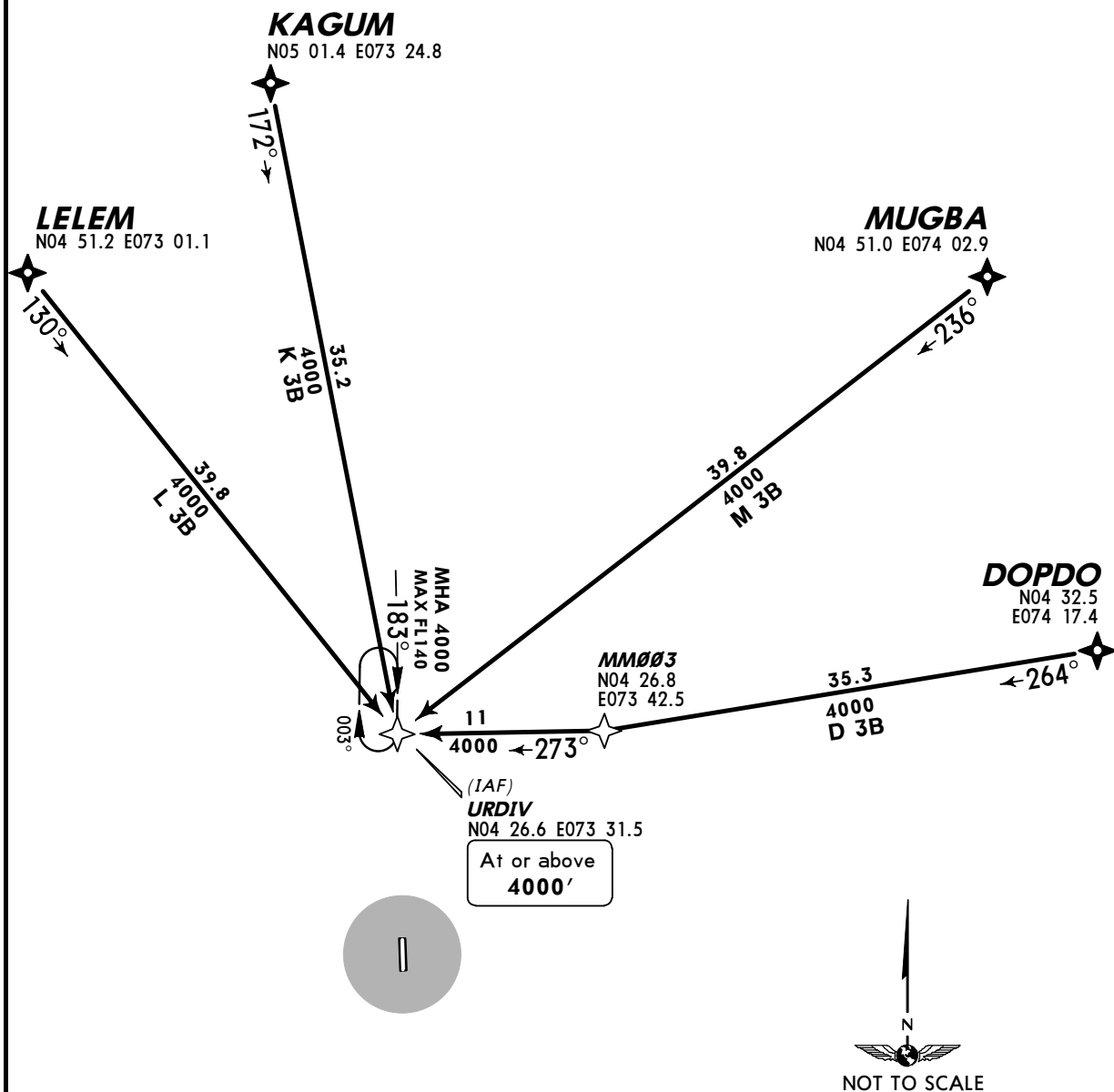
VRMM/MLE
MALE INTL

JEPPESEN
 16 JUL 10 **10-2E** **Eff 29 Jul**

MALE, MALDIVES
RNAV STAR

ATIS 125.5	Apt Elev 6'	Alt Set: hPa Trans level: By ATC Trans alt: 11000' 1. Request and obtain ATC approval before passing TMA boundary. 2. Expect radar vectoring. 3. If unable to comply inform ATC.	1500' MSA ARP
----------------------	-----------------------	--	-------------------------

DOPDO 3B (D 3B), KAGUM 3B (K 3B)
LELEM 3B (L 3B), MUGBA 3B (M 3B)
RWY 18 RNAV ARRIVALS
 RNAV 1 (GNSS REQUIRED)
 FROM NORTH



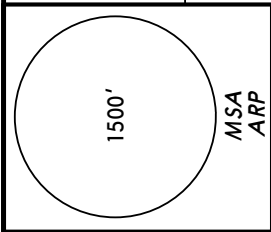
STAR	ROUTING
D 3B	DOPDO - MM003 - URDIV (4000'+).
K 3B	KAGUM - URDIV (4000'+).
L 3B	LELEM - URDIV (4000'+).
M 3B	MUGBA - URDIV (4000'+).

VRMM/MLE
MALE INTL

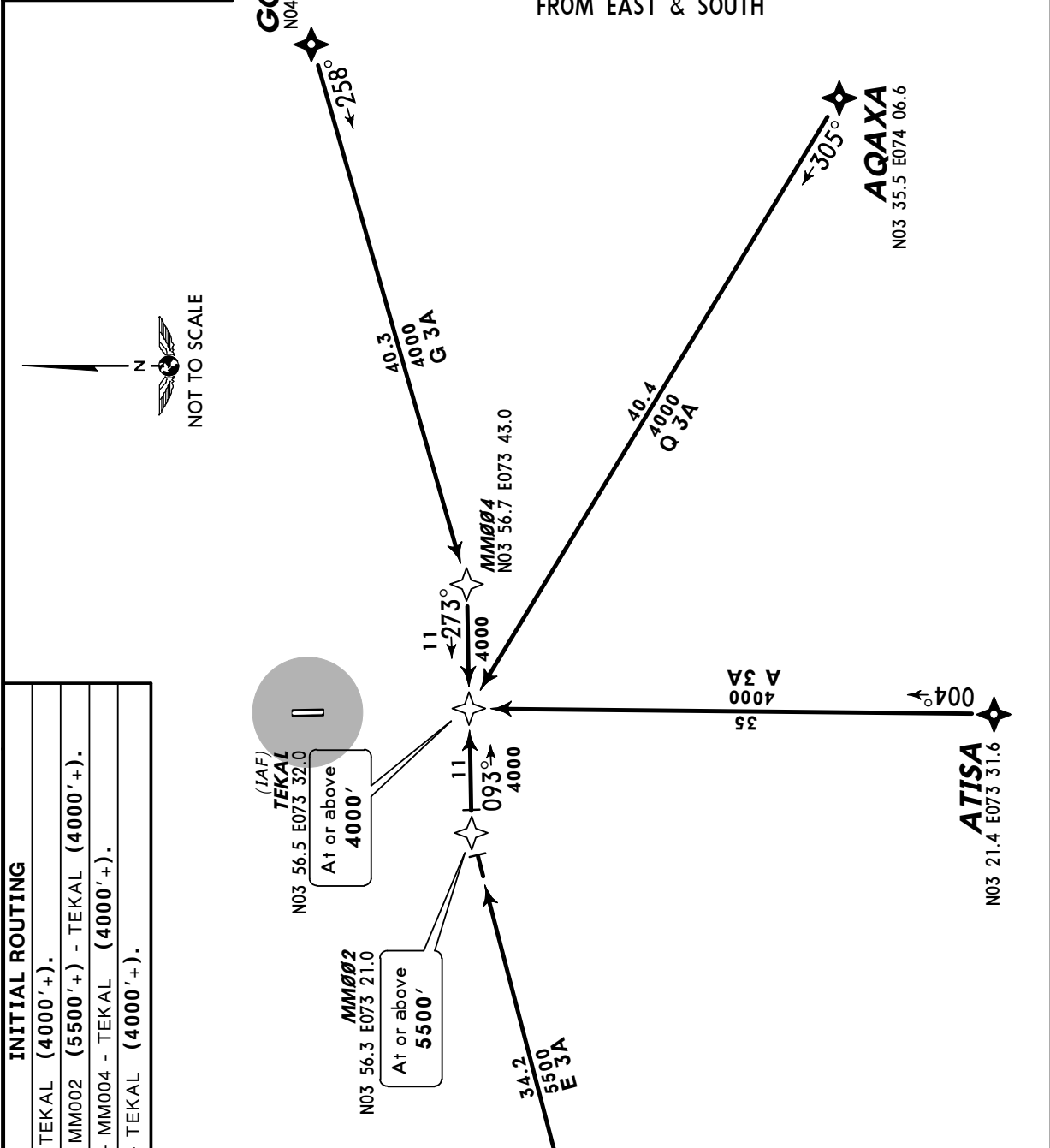
JEPPESEN
17 DEC 10 **(10-2F)**

MALE, MALDIVES
RNAV STAR

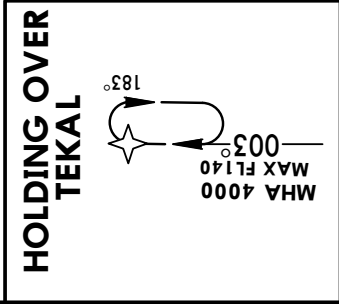
ATIS 125.5	Apt Elev 6'	Alt Set: hPa Trans level: By ATC Trans alt: 11000' 1. Request and obtain ATC approval before passing TMA boundary. 2. Expect radar vectoring. 3. If unable to comply inform ATC.
----------------------	-----------------------	---



AQAXA 3A (Q 3A), ATISA 3A (A 3A)
ESKOL 3A (E 3A), GOKAM 3A (G 3A)
RWY 36 RNAV ARRIVALS
RNAV 1 (GNSS REQUIRED)
FROM EAST & SOUTH



STAR	INITIAL ROUTING
A 3A	ATISA - TEKAL (4000'+).
E 3A	ESKOL - MM002 (5500'+) - TEKAL (4000'+).
G 3A	GOKAM - MM004 - TEKAL (4000'+).
Q 3A	AQAXA - TEKAL (4000'+).

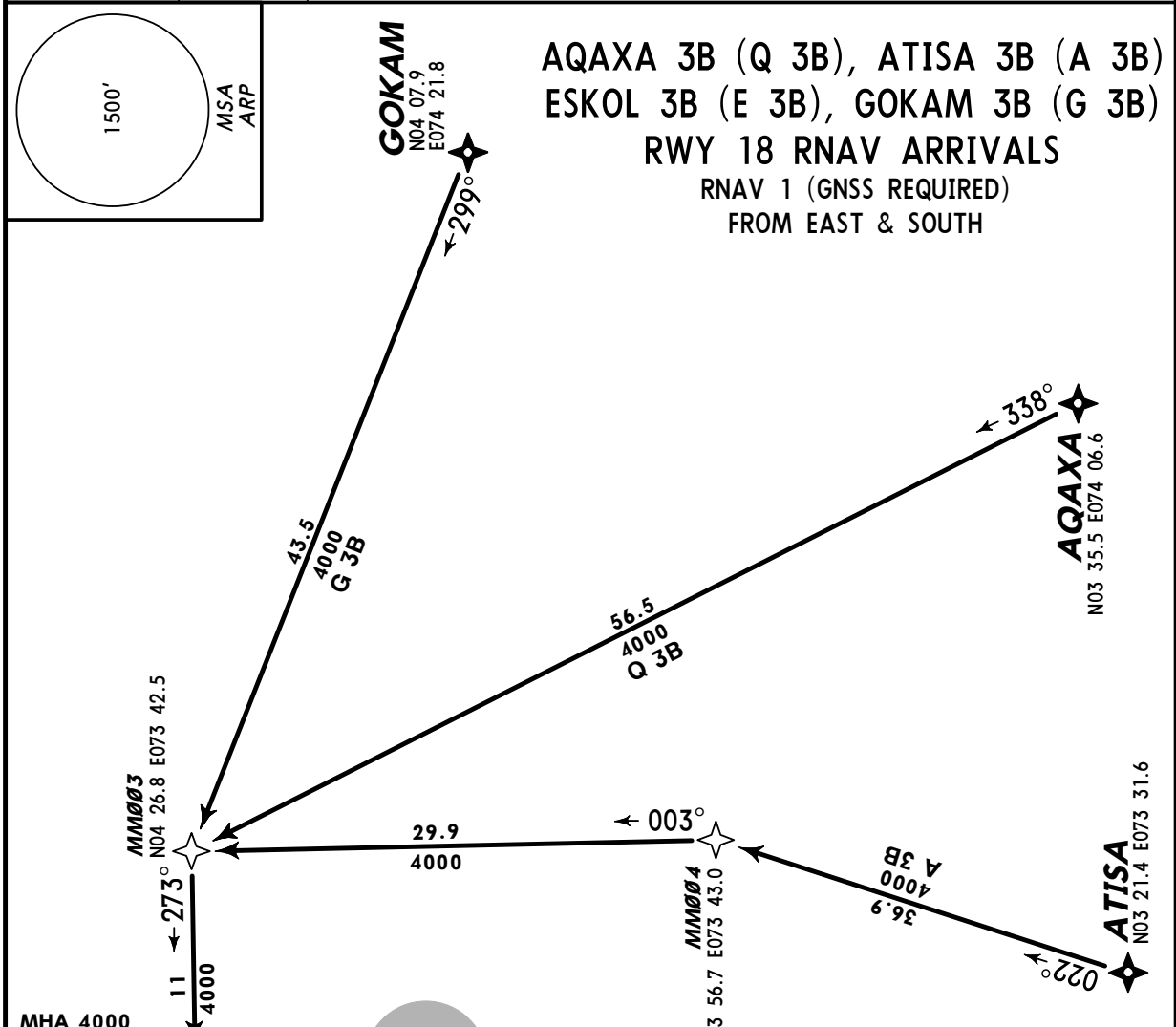


VRMM/MLE
MALE INTL

JEPPESEN
17 DEC 10 **(10-2G)**

MALE, MALDIVES
RNAV STAR

ATIS 125.5	Apt Elev 6'	Alt Set: hPa Trans level: By ATC Trans alt: 11000' 1. Request and obtain ATC approval before passing TMA boundary. 2. Expect radar vectoring. 3. If unable to comply inform ATC.
----------------------	-----------------------	--



AQAXA 3B (Q 3B), ATISA 3B (A 3B)
ESKOL 3B (E 3B), GOKAM 3B (G 3B)
RWY 18 RNAV ARRIVALS
RNAV 1 (GNSS REQUIRED)
FROM EAST & SOUTH

STAR	INITIAL ROUTING
A 3B	ATISA - MM004 - MM003 - URDIV (4000'+).
E 3B	ESKOL - MM001 - URDIV (4000'+).
G 3B	GOKAM - MM003 - URDIV (4000'+).
Q 3B	AQAXA - MM003 - URDIV (4000'+).

CHANGES: Track from ESKOL to MM001.

VRMM/MLE
MALE INTL

JEPPESEN

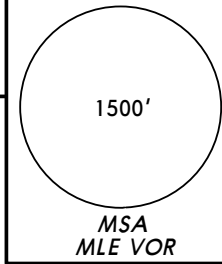
8 DEC 06 **10-3**

MALE, MALDIVES

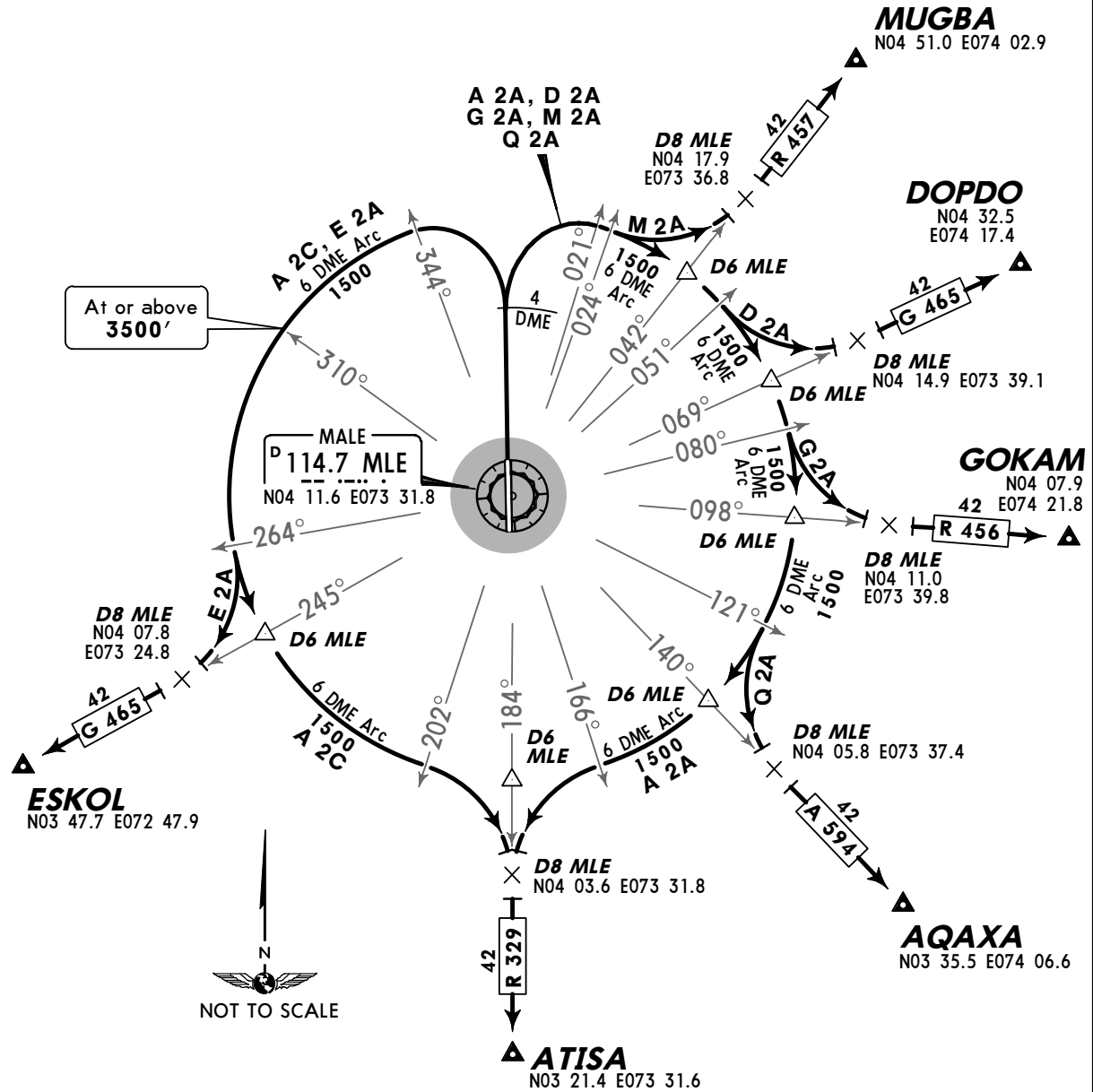
SID

Apt Elev
6'

Trans level: By ATC Trans alt: 11000'
All undesig departures shall maintain runway heading until
MLE 3 DME.



ATISA TWO ALFA (A 2A), ATISA TWO CHARLIE (A 2C)
AQAXA TWO ALFA (Q 2A), DOPDO TWO ALFA (D 2A)
ESKOL TWO ALFA (E 2A), GOKAM TWO ALFA (G 2A)
MUGBA TWO ALFA (M 2A)
RWY 36 DEPARTURES



SID	INITIAL CLIMB
A 2A, D 2A, G 2A M 2A, Q 2A	Climb on runway heading to MLE 4 DME, turn RIGHT, intercept MLE 6 DME arc at MLE R-021.
A 2C, E 2A	Climb on runway heading to MLE 4 DME, turn LEFT, intercept MLE 6 DME arc at MLE R-344.
SID	ROUTING
A 2A	Along MLE 6 DME arc, at MLE R-166 turn LEFT, join airway R 329 at D8 MLE.
A 2C	Along MLE 6 DME arc, at MLE R-202 turn RIGHT, join airway R 329 at D8 MLE.
D 2A	Along MLE 6 DME arc, at MLE R-051 turn LEFT, join airway G 465 at D8 MLE.
E 2A	Along MLE 6 DME arc, at MLE R-264 turn RIGHT, join airway G 465 at D8 MLE.
G 2A	Along MLE 6 DME arc, at MLE R-080 turn LEFT, join airway R 456 at D8 MLE.
M 2A	Along MLE 6 DME arc, at MLE R-024 turn LEFT, join airway R 457 at D8 MLE.
Q 2A	Along MLE 6 DME arc, at MLE R-121 turn LEFT, join airway A 594 at D8 MLE.

VRMM/MLE
MALE INTL

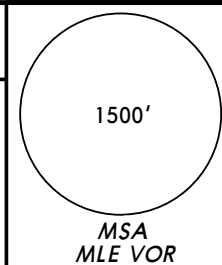
JEPPESEN

8 DEC 06 **(10-3A)**

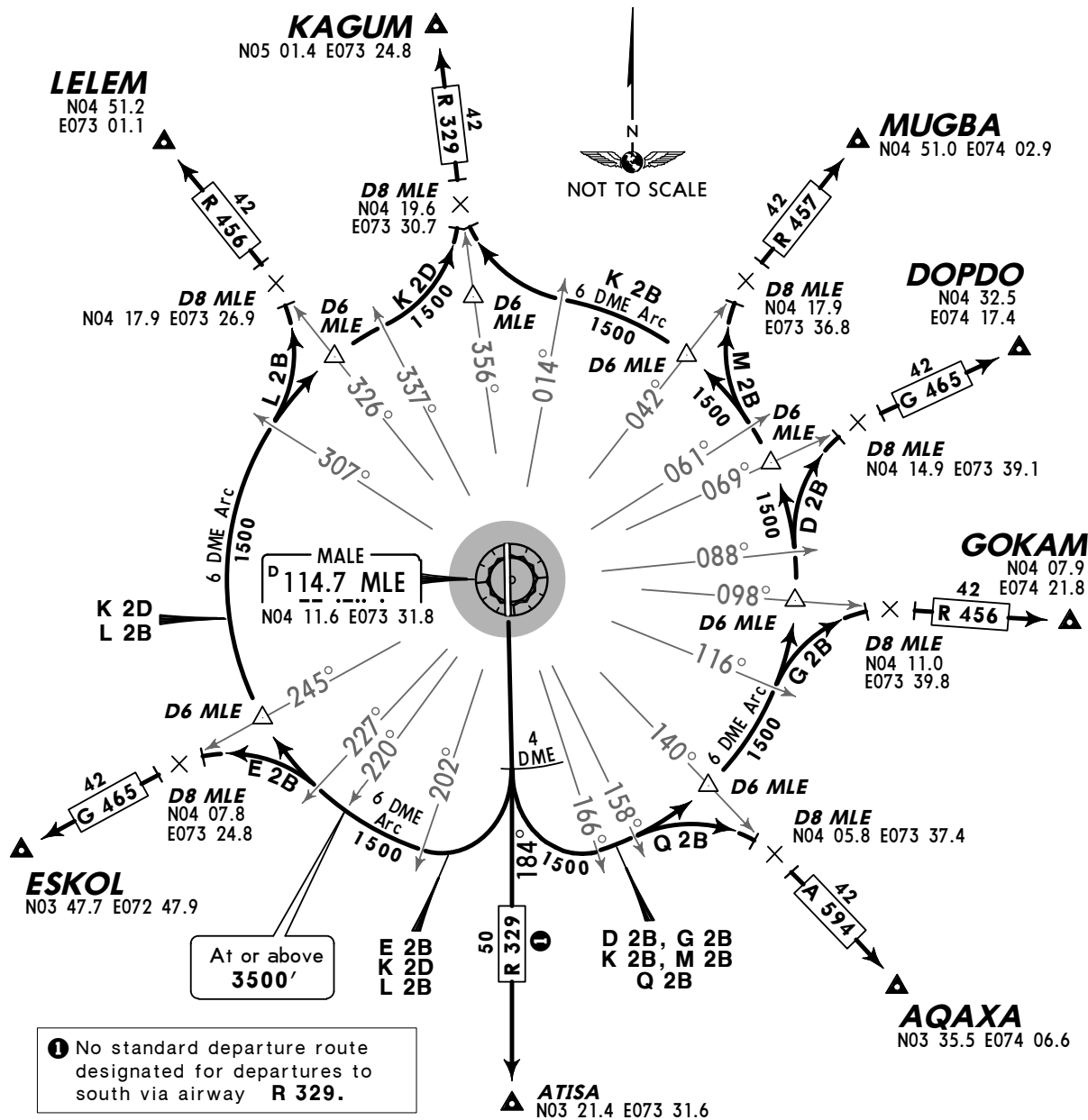
MALE, MALDIVES

SID

Apt Elev 6' Trans level: By ATC Trans alt: 11000'



**AQAXA TWO BRAVO (Q 2B), DOPDO TWO BRAVO (D 2B)
 ESKOL TWO BRAVO (E 2B), GOKAM TWO BRAVO (G 2B)
 KAGUM TWO BRAVO (K 2B), KAGUM TWO DELTA (K 2D)
 LELEM TWO BRAVO (L 2B), MUGBA TWO BRAVO (M 2B)
 RWY 18 DEPARTURES**



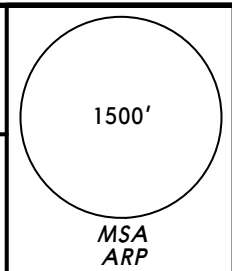
SID	INITIAL CLIMB
D 2B, G 2B, K 2B M 2B, Q 2B	On runway heading to MLE 4 DME, turn LEFT, intercept MLE 6 DME arc at MLE R-166.
E 2B, K 2D, L 2B	On runway heading to MLE 4 DME, turn RIGHT, intercept MLE 6 DME arc at MLE R-202.
SID	ROUTING
D 2B	Along MLE 6 DME arc, at MLE R-088 turn RIGHT, join airway G 465 at D8 MLE.
E 2B	Along MLE 6 DME arc, at MLE R-227 turn LEFT, join airway G 465 at D8 MLE.
G 2B	Along MLE 6 DME arc, at MLE R-116 turn RIGHT, join airway R 456 at D8 MLE.
K 2B	Along MLE 6 DME arc, at MLE R-014 turn RIGHT, join airway R 329 at D8 MLE.
K 2D	Along MLE 6 DME arc, at MLE R-337 turn LEFT, join airway R 329 at D8 MLE.
L 2B	Along MLE 6 DME arc, at MLE R-307 turn LEFT, join airway R 456 at D8 MLE.
M 2B	Along MLE 6 DME arc, at MLE R-061 turn RIGHT, join airway R 457 at D8 MLE.
Q 2B	Along MLE 6 DME arc, at MLE R-158 turn RIGHT, join airway A 594 at D8 MLE.

VRMM/MLE
MALE INTL

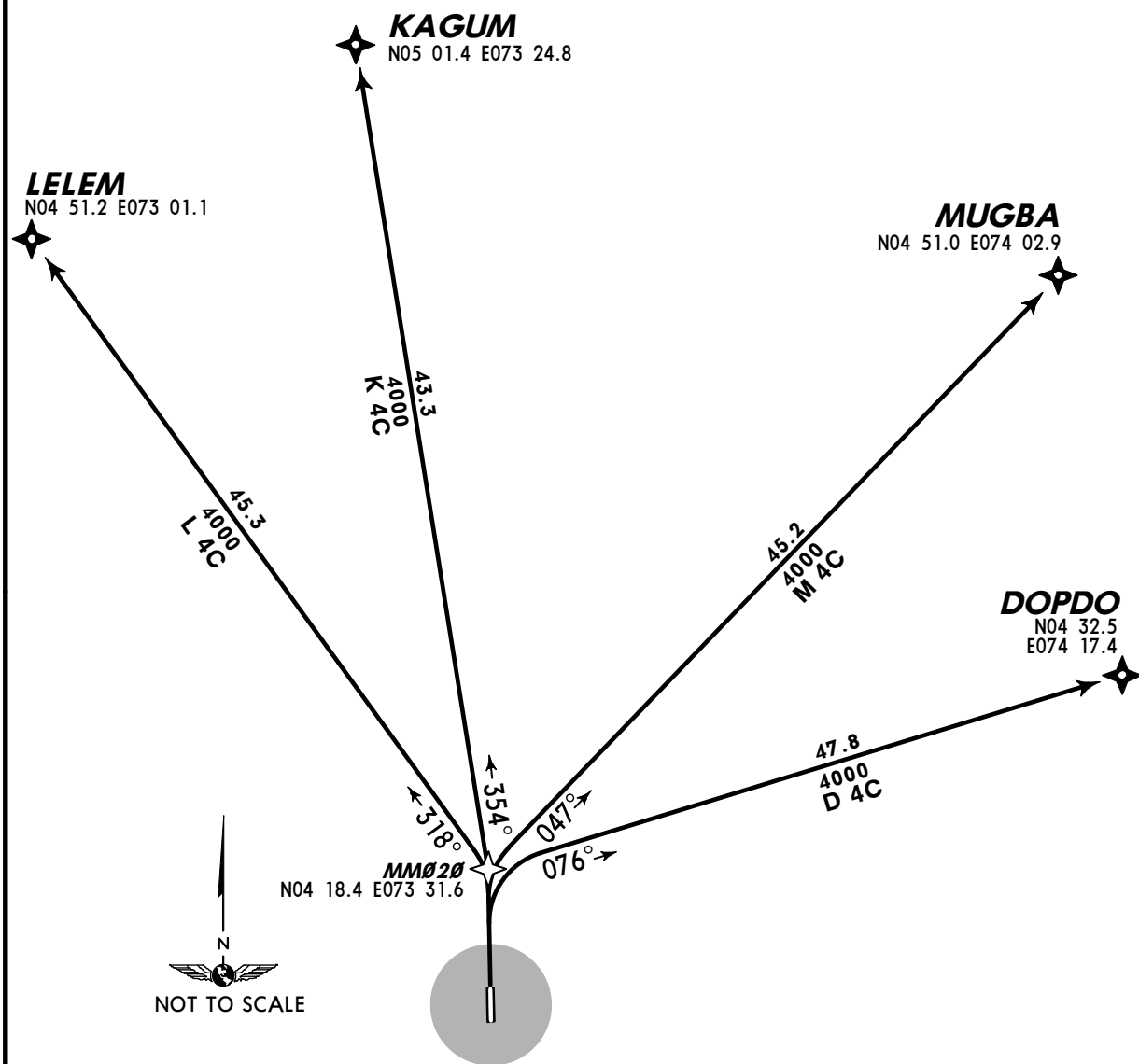
JEPPESEN
 16 JUL 10 **10-3B** Eff 29 Jul

MALE, MALDIVES
RNAV SID

Apt Elev
6'
 Trans level: By ATC Trans alt: 11000'
 1. Request ATC approval before take-off.
 2. Expect radar vectoring.
 3. If unable to comply inform ATC.



DOPDO 4C (D 4C), KAGUM 4C (K 4C)
LELEM 4C (L 4C), MUGBA 4C (M 4C)
RWY 36 RNAV DEPARTURES
RNAV 1 (GNSS REQUIRED)
TO NORTH

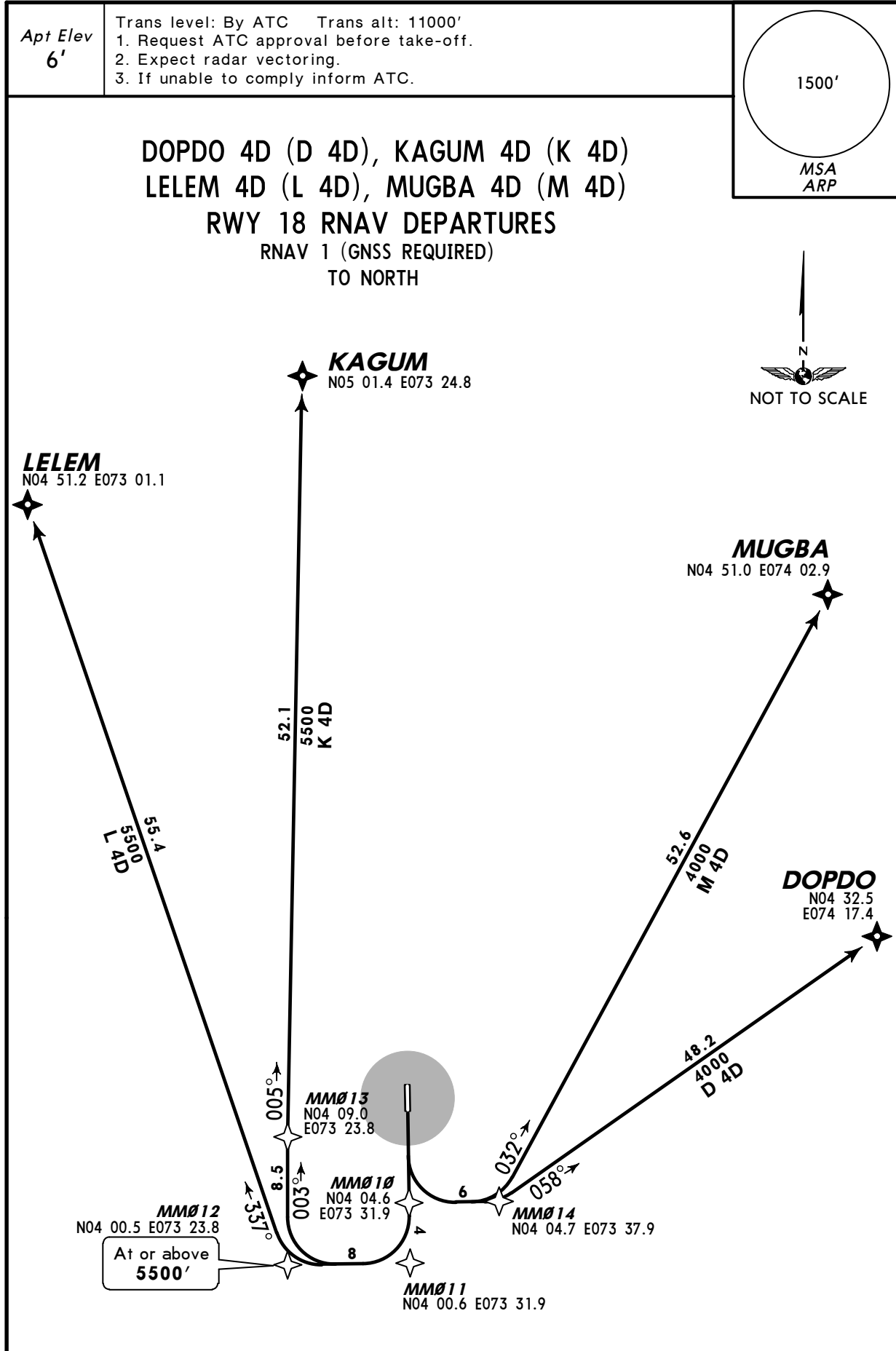


SID	ROUTING
D 4C	MM020 - DOPDO.
K 4C	MM020- KAGUM.
L 4C	MM020 - LELEM.
M 4C	MM020 - MUGBA.

VRMM/MLE
MALE INTL

JEPPESEN
16 JUL 10 **10-3C** **Eff 29 Jul**

MALE, MALDIVES
RNAV SID



SID	ROUTING
D 4D	MM010 - MM014 - DOPDO.
K 4D	MM010 - MM011 - MM012 (5500'+) - MM013 - KAGUM.
L 4D	MM010 - MM011 - MM012 (5500'+) - LELEM.
M 4D	MM010 - MM014 - MUGBA.

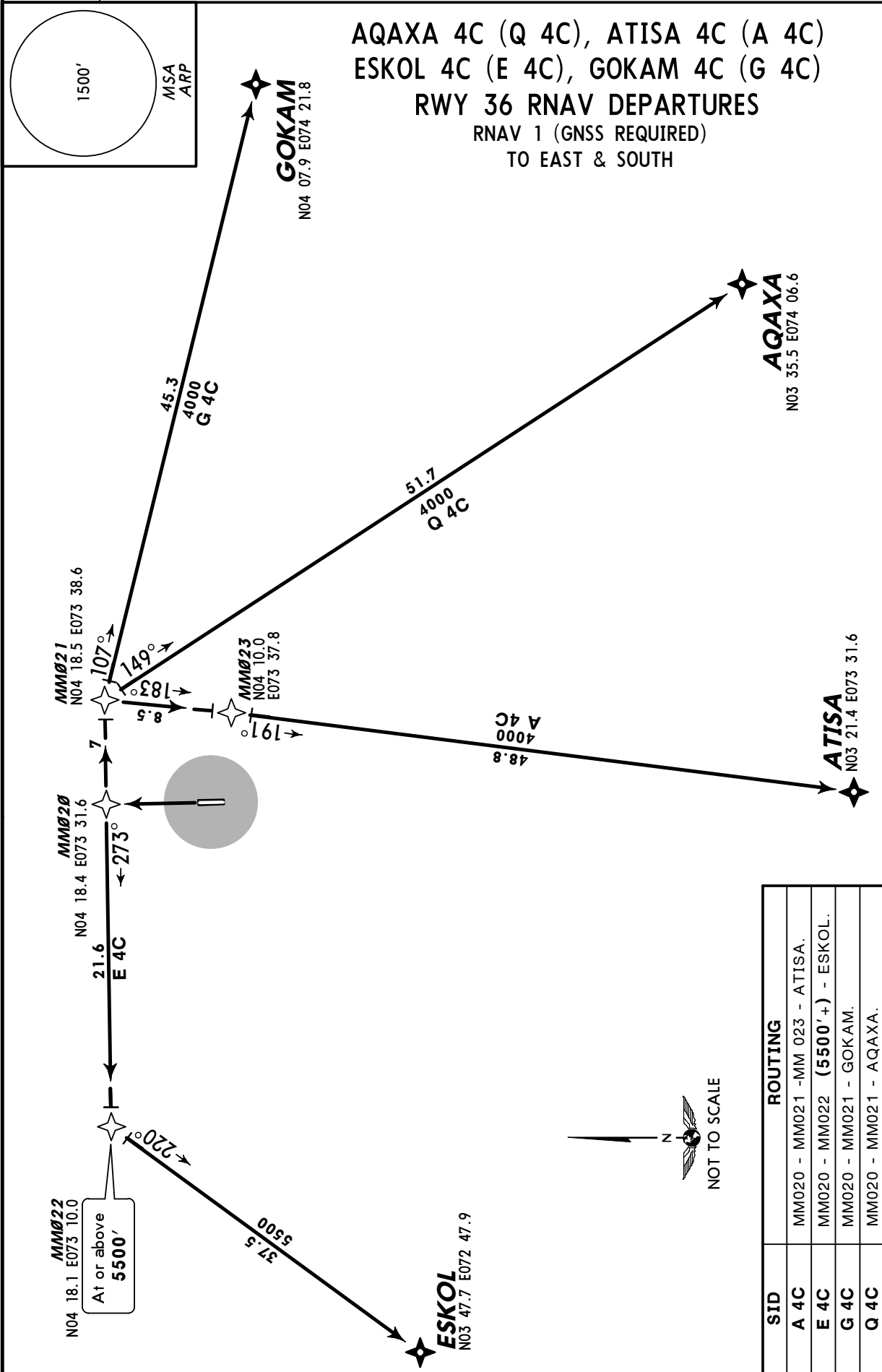
VRMM/MLE
MALE INTL

JEPPESEN
17 DEC 10 **(10-3D)**

MALE, MALDIVES
RNAV SID

Apt Elev
6'

Trans level: By ATC Trans alt: 11000'
1. Request ATC approval before take-off.
2. Expect radar vectoring.
3. If unable to comply inform ATC.



SID	ROUTING
A 4C	MM020 - MM021 - MM 023 - ATISA.
E 4C	MM020 - MM022 (5500' +) - ESKOL.
G 4C	MM020 - MM021 - GOKAM.
Q 4C	MM020 - MM021 - AQAXA.

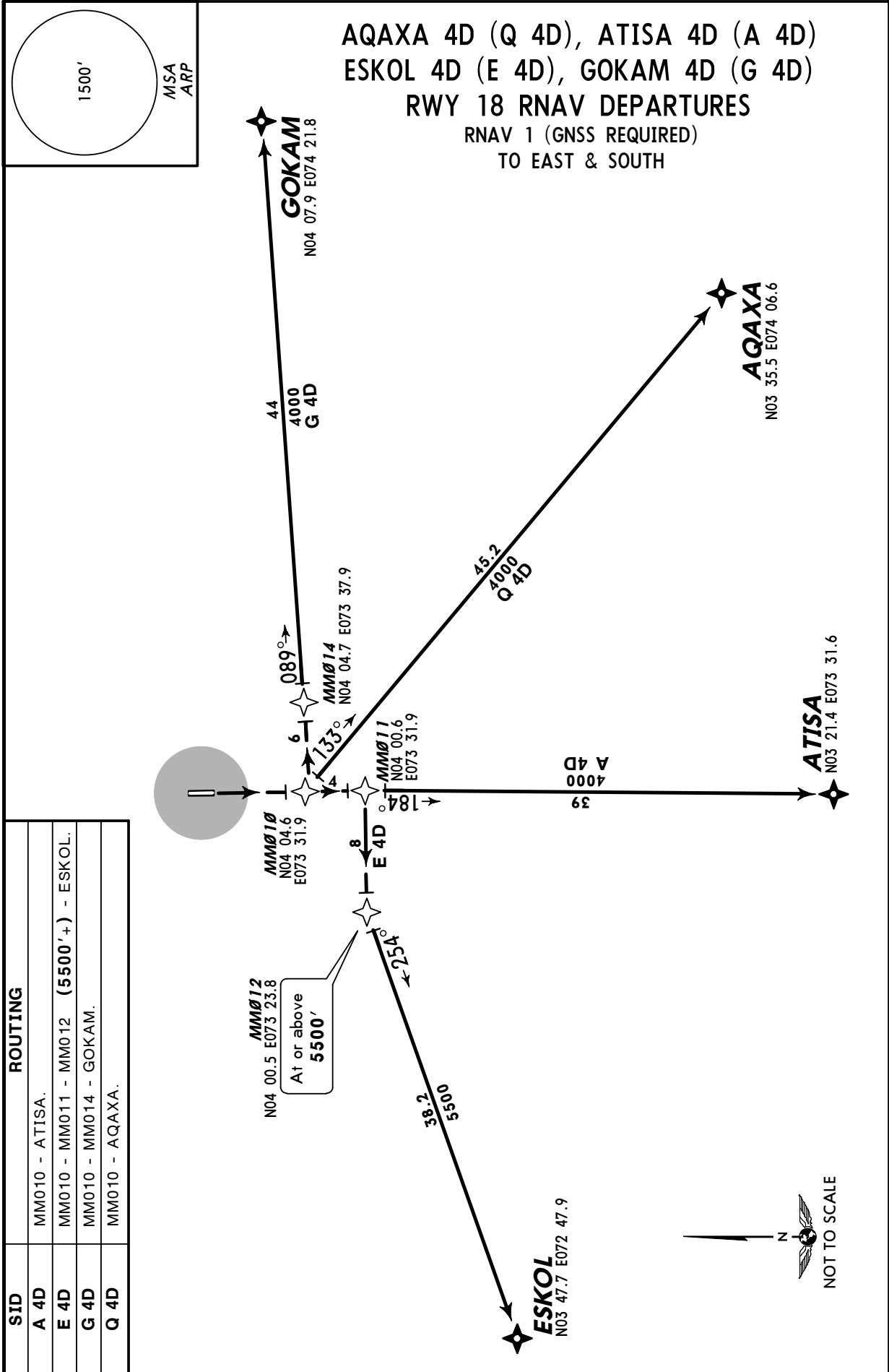
VRMM/MLE
MALE INTL

JEPPESEN
 17 DEC 10 (10-3E)

MALE, MALDIVES
RNAV SID

Apt Elev
6'

Trans level: By ATC Trans alt: 11000'
 1. Request ATC approval before take-off.
 2. Expect radar vectoring.
 3. If unable to comply inform ATC.



CHANGES: Track from MM014 to GOKAM.

VRMM/MLE

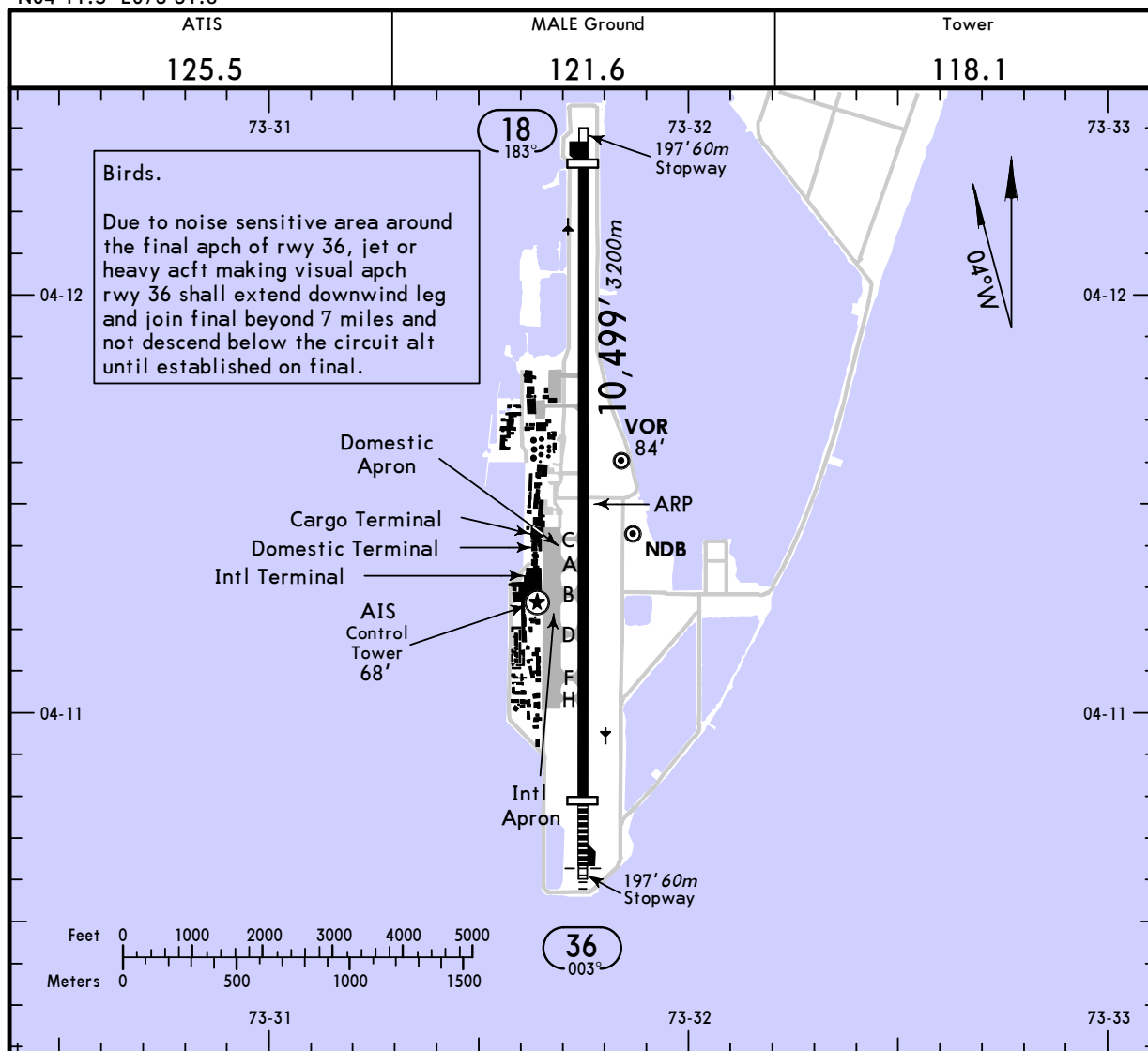


MALE, MALDIVES

Apt Elev **6'**
 N04 11.5 E073 31.8

9 OCT 09 **(10-9)** Eff 22 Oct

MALE INTL



ADDITIONAL RUNWAY INFORMATION

RWY		USABLE LENGTHS		TAKE-OFF	WIDTH
		Threshold	LANDING BEYOND Glide Slope		
18	HIRL (60m) PAPI (2.83°)	10,171' 3100m			148'
36	HIRL (60m) HIALS PAPI (2.86°)	9547' 2910m	8576' 2614m		45m

TAKE-OFF

AIR CARRIER (JAA)

All Rwys

	LVP must be in force RCLM (DAY only) or RL	RCLM (DAY only) or RL
A		
B	250m	400m
C		
D	300m	

VRMM/MLE

JEPPESEN

16 JUL 10

10-9S

Eff 29 Jul

Standard
MALE, MALDIVES
MALE INTL

STRAIGHT-IN RWY	A	B	C	D
18 RNAV (LNAV/VNAV)	290' (284') R1400m	290' (284') R1400m	290' (284') R1400m	290' (284') R1400m
RNAV (LNAV) ①	390' (384') R1500m	390' (384') R1500m	390' (384') R1800m	390' (384') R1800m
VOR DME ①	380' (374') R1500m	380' (374') R1500m	380' (374') R1700m	380' (374') R1700m
VOR	380' (374') R1900m	380' (374') R1900m	380' (374') C2100m	380' (374') C2100m
NDB DME ①	380' (374') R1500m	380' (374') R1500m	380' (374') R1700m	380' (374') R1700m
NDB	380' (374') R1900m	380' (374') R1900m	380' (374') C2100m	380' (374') C2100m
36 ILS	310' (305') R1200m	320' (315') R1200m	329' (324') R1300m	343' (338') R1300m
ALS out	R1400m	R1400m	R1500m	R1500m
LOC ①	470' (465') R1500m	470' (465') R1500m	470' (465') R2000m	470' (465') R2000m
ALS out	R1500m	R1500m	C2200m	C2200m
RNAV (LNAV/VNAV)	320' (315') R1200m	320' (315') R1200m	320' (315') R1200m	320' (315') R1200m
ALS out	R1400m	R1400m	R1400m	R1400m
RNAV (LNAV) ①	390' (385') R1500m	390' (385') R1500m	390' (385') R1600m	390' (385') R1600m
ALS out	R1500m	R1500m	R1800m	R1800m
VOR DME ①	470' (465') R1500m	470' (465') R1500m	470' (465') R2000m	470' (465') R2000m
ALS out	R1500m	R1500m	C2200m	C2200m
VOR	470' (465') C2200m	470' (465') C2200m	470' (465') C2400m	470' (465') C2400m
ALS out	C2400m	C2400m	C2600m	C2600m
NDB DME ①	470' (465') R1500m	470' (465') R1500m	470' (465') R2000m	470' (465') R2000m
ALS out	R1500m	R1500m	C2200m	C2200m
NDB	470' (465') C2200m	470' (465') C2200m	470' (465') C2400m	470' (465') C2400m
ALS out	C2400m	C2400m	C2600m	C2600m

① Continuous Descent Final Approach.

CIRCLE-TO-LAND ②	100 KT	135 KT	180 KT	205 KT
After apch to Rwy 18	410' (404')	510' (504')	610' (604')	710' (704')
After apch to Rwy 36	470' (464') V1500m ③	510' (504') V1600m ③	610' (604') V2400m ③	710' (704') V3600m

② After RNAV: NOT AUTHORIZED.

③ or higher minimums of preceding straight-in approach.

TAKE-OFF RWY 18, 36

LVP must be in Force			
	RCLM (DAY only) or RL	RCLM (DAY only) or RL	NIL (DAY only)
A			
B	250m	400m	500m
C			
D	300m		

VRMM/MLE

JEPPESEN
 16 JUL 10 **10-9X** Eff 29 Jul

JAA MINIMUMS
MALE, MALEDIVES
 MALE INTL

STRAIGHT-IN RWY		A	B	C	D
18	RNAV (LNAV/VNAV)	290' (284')	290' (284')	290' (284')	290' (284')
		R1500m	R1500m	R1600m	R1800m
	RNAV (VNAV)	390' (384')	390' (384')	390' (384')	390' (384')
		R1500m	R1500m	R1800m	R2000m
	VOR DME	380' (374')	380' (374')	380' (374')	380' (374')
		R1500m	R1500m	R1800m	R2000m
	VOR	380' (374')	380' (374')	380' (374')	380' (374')
		R1500m	R1500m	R1800m	R2000m
	NDB DME	380' (374')	380' (374')	380' (374')	380' (374')
		R1500m	R1500m	R1800m	R2000m
	NDB	380' (374')	380' (374')	380' (374')	380' (374')
		R1500m	R1500m	R1800m	R2000m
36	ILS	310' (305')	320' (315')	329' (324')	343' (338')
		R1000m	R1000m	R1000m	R1000m
	ALS out	R1200m	R1200m	R1200m	R1200m
	LOC	470' (465')	470' (465')	470' (465')	470' (465')
		R1500m	R1500m	R1800m	R2000m
	ALS out	R1500m	R1500m	R2000m	R2000m
	RNAV (LNAV/VNAV)	320' (315')	320' (315')	320' (315')	320' (315')
		R1300m	R1400m	R1600m	R1800m
	ALS out	R1500m	R1500m	R1800m	R2000m
	RNAV (VNAV)	390' (385')	390' (385')	390' (385')	390' (385')
		R1300m	R1400m	R1600m	R1800m
	ALS out	R1500m	R1500m	R1800m	R2000m
	VOR DME	470' (465')	470' (465')	470' (465')	470' (465')
		R1500m	R1500m	R1800m	R2000m
	ALS out	R1500m	R1500m	R2000m	R2000m
	VOR	470' (465')	470' (465')	470' (465')	470' (465')
		R1500m	R1500m	R1800m	R2000m
	ALS out	R1500m	R1500m	R2000m	R2000m
	NDB DME	470' (465')	470' (465')	470' (465')	470' (465')
		R1500m	R1500m	R1800m	R2000m
	ALS out	R1500m	R1500m	R2000m	R2000m
	NDB	470' (465')	470' (465')	470' (465')	470' (465')
		R1500m	R1500m	R1800m	R2000m
	ALS out	R1500m	R1500m	R2000m	R2000m

CIRCLE-TO-LAND ①	100 KT	135 KT	180 KT	205 KT
After apch to RWY 18	410' (404')	510' (504')	610' (604')	710' (704')
After apch to RWY 36	470' (464')	510' (504')	610' (604')	710' (704')
	V1500m	V1600m	V2400m	V3600m

① After RNAV: NOT AUTHORIZED.

TAKE-OFF RWY 18, 36

LVP must be in Force		
RCLM (DAY only) or RL	RCLM (DAY only) or RL	NIL (DAY only)
A	400m	500m
B		
C		
D		
	250m	
	300m	

CHANGES: RNAV procedures.

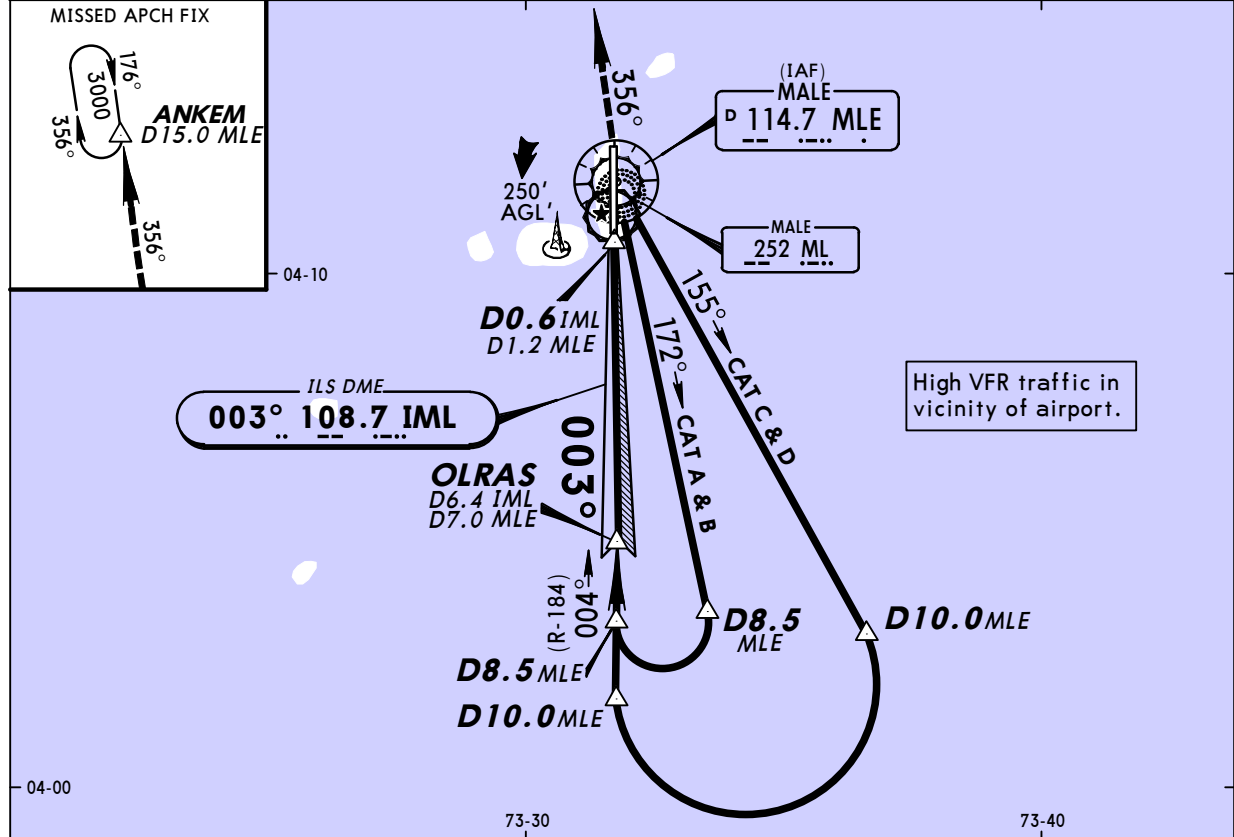
VRMM/MLE
MALE INTL

JEPPESEN
13 FEB 09 **(11-1)**

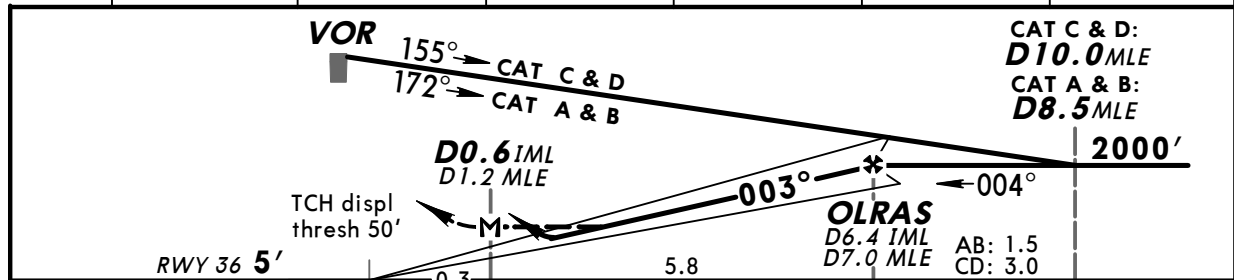
MALE, MALDIVES
VOR DME ILS DME-1 Rwy 36

BRIEFING STRIP™

ATIS 125.5		MALE Control (APP) 119.7		MALE Tower 118.1		Ground 121.6	
LOC IML 108.7	Final Apch Crs 003°	GS OLRAS 2000' (1995')	ILS DA(H) Refer to Minimums	Apt Elev 6' RWY 5'		1500'	
MISSED APCH: Climb STRAIGHT AHEAD to VOR, then turn LEFT to intercept R-356 climbing to 3000' and proceed to ANKEM and hold, or as directed.							
Alt Set: hPa		Rwy Elev: 0 hPa		Trans level: By ATC		Trans alt: 11000'	
							MSA MLE VOR



LOC (GS out)	IML DME	1.0	2.0	3.0	4.0	5.0	6.0
	ALTITUDE	320'	640'	950'	1270'	1590'	1910'
	MLE DME	2.0	3.0	4.0	5.0	6.0	
	ALTITUDE	430'	750'	1060'	1380'	1690'	



Gnd speed-Kts	70	90	100	120	140	160				
ILS GS 3.00° or LOC Desc Grad 5.2%	377	485	539	647	755	862				
MAP at D0.6 IML/D1.2 MLE										
							HIALS	MLE	3000'	MLE
							PAPI PAPI	114.7	↑	114.7
									LT	on R-356

STRAIGHT-IN LANDING RWY 36				CIRCLE-TO-LAND			
ILS		LOC (GS out)					
DA(H) A: 310' (305') C: 329' (324')		MDA(H) 470' (465')					
B: 320' (315') D: 343' (338')							
FULL		ALS out		Max Kts		MDA(H)	
A				100	470' (464')		1600m
B	1500m			135	500' (494')		1600m
C	1600m			180	600' (594')		2400m
D	1700m			205	700' (694')		3600m

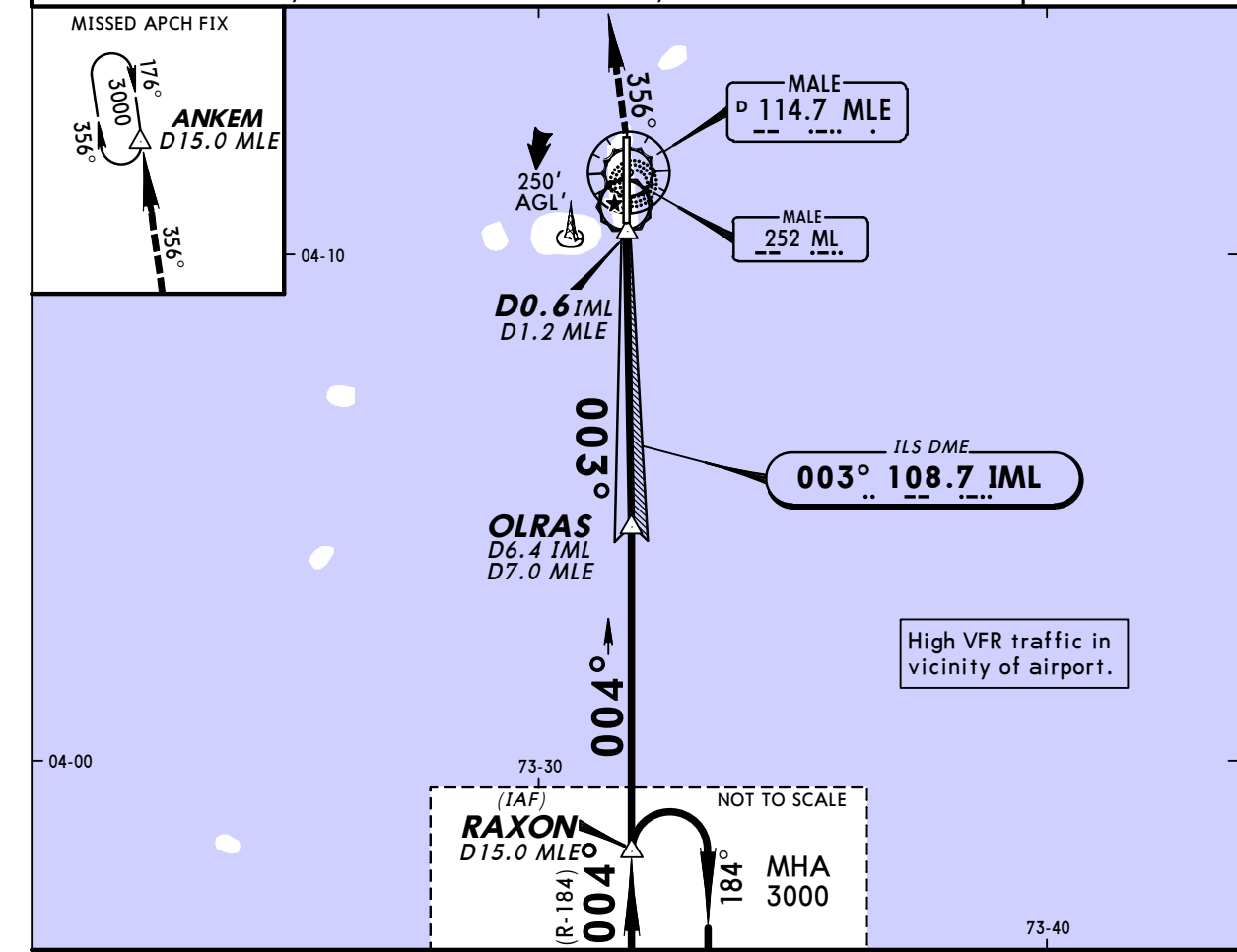
PANS OPS

VRMM/MLE
MALE INTL

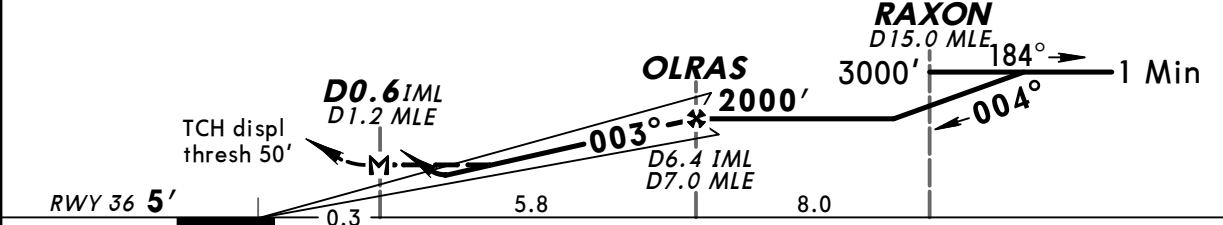
JEPPESEN
13 FEB 09 **(11-2)**

MALE, MALDIVES
VOR DME ILS DME-2 Rwy 36

ATIS 125.5		MALE Control (APP) 119.7		MALE Tower 118.1		Ground 121.6	
LOC IML 108.7	Final Apch Crs 003°	GS OLRAS 2000' (1995')	ILS DA(H) Refer to Minimums	Apt Elev 6' RWY 5'		1500'	
MISSED APCH: Climb STRAIGHT AHEAD to VOR, then turn LEFT to intercept R-356 climbing to 3000' and proceed to ANKEM and hold, or as directed.							
Alt Set: hPa		Rwy Elev: 0 hPa		Trans level: By ATC		Trans alt: 11000'	
							MSA MLE VOR



LOC (GS out)	IML DME	1.0	2.0	3.0	4.0	5.0	6.0
	ALTITUDE	320'	640'	950'	1270'	1590'	1910'



Gnd speed-Kts	70	90	100	120	140	160		HIALS	MLE	3000'	MLE
ILS GS 3.00° or LOC Desc Grad 5.2%	377	485	539	647	755	862		PAPI PAPI	114.7	↑	114.7
MAP at D0.6 IML/D1.2 MLE										LT	on R-356

STRAIGHT-IN LANDING RWY 36				CIRCLE-TO-LAND			
ILS DA(H) A: 310' (305') C: 329' (324') B: 320' (315') D: 343' (338')		LOC (GS out) MDA(H) 470' (465')		Max Kts		MDA(H)	
FULL	ALS out	FULL	ALS out	100	470' (464')	1600m	
A				135	500' (494')	1600m	
B	1500m		1600m	180	600' (594')	2400m	
C	1600m		2000m	205	700' (694')	3600m	
D	1700m		2400m				

PANS OPS

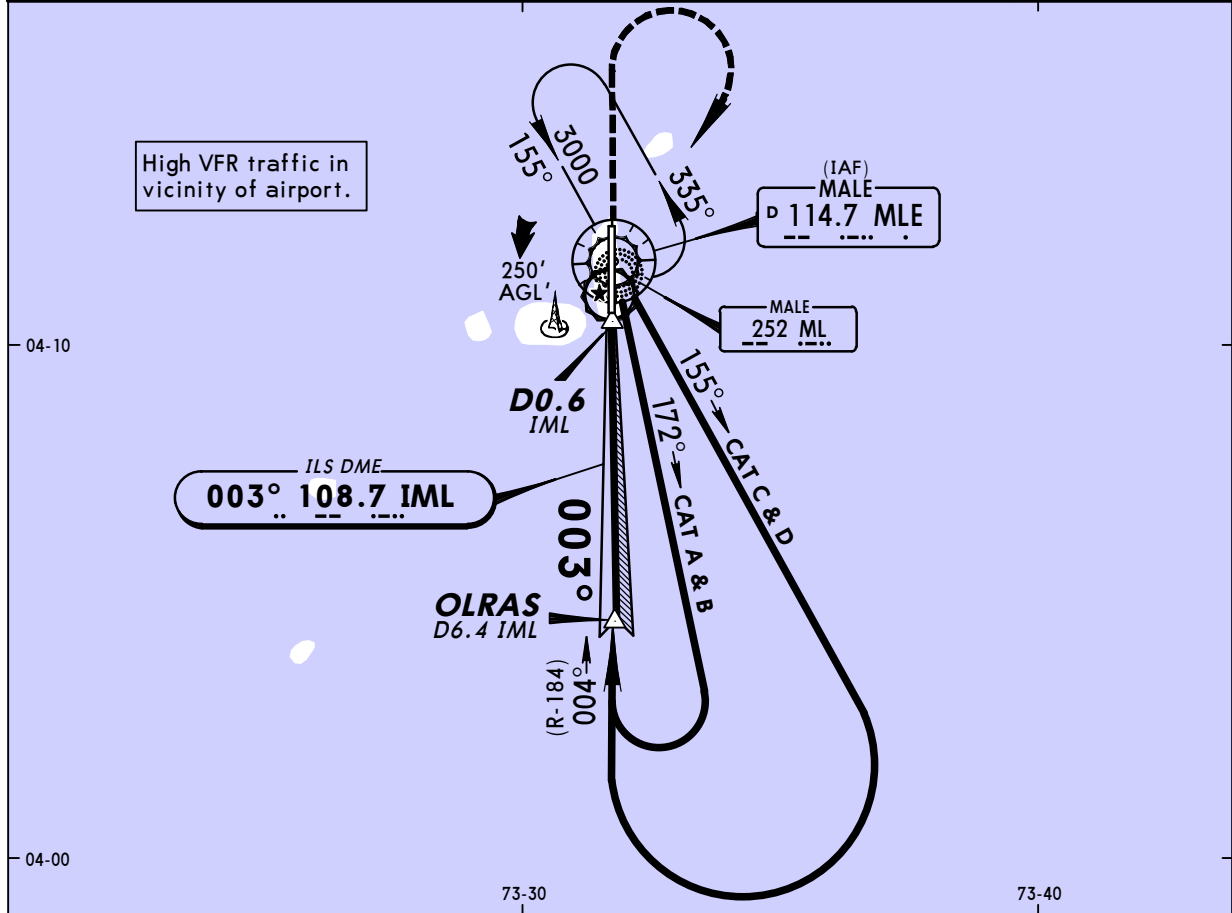
VRMM/MLE
MALE INTL

JEPPESEN
13 FEB 09 **(11-3)**

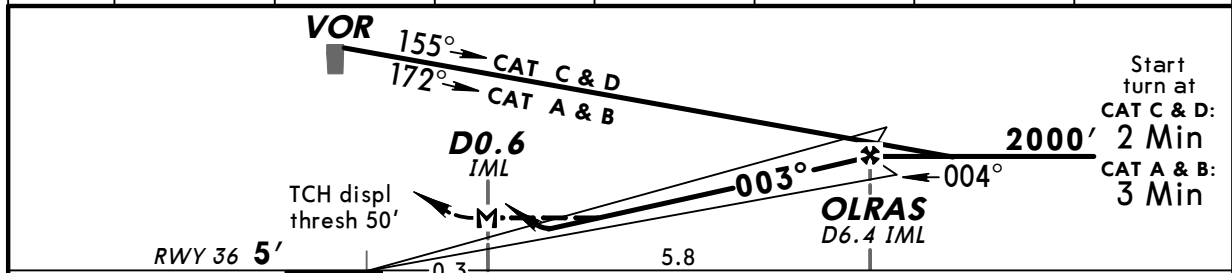
MALE, MALDIVES
VOR ILS DME Rwy 36

BRIEFING STRIP™

ATIS 125.5		MALE Control (APP) 119.7		MALE Tower 118.1		Ground 121.6	
LOC IML 108.7	Final Apch Crs 003°	GS OLRAS 2000' (1995')	ILS DA(H) Refer to Minimums	Apt Elev 6' RWY 5'		1500'	
MISSED APCH: Climb STRAIGHT AHEAD to 3000', then turn RIGHT and proceed direct to VOR and hold, or as directed.							
Alt Set: hPa		Rwy Elev: 0 hPa		Trans level: By ATC		Trans alt: 11000'	



LOC (GS out)	IML DME ALTITUDE	1.0	2.0	3.0	4.0	5.0	6.0
		320'	640'	950'	1270'	1590'	1910'



Gnd speed-Kts	70	90	100	120	140	160	HIALS PAPI PAPI 3000'
ILS GS 3.00° or LOC Descent Gradient 5.2%	377	485	539	647	755	862	
MAP at D0.6 IML							

STRAIGHT-IN LANDING RWY 36				CIRCLE-TO-LAND			
ILS		LOC (GS out)		MDA(H)		Max Kts	MDA(H)
A	B	C	D	FULL	ALS out		
310' (305')	329' (324')	320' (315')	343' (338')	470' (465')		100	470' (464') 1600m
						135	500' (494') 1600m
						180	600' (594') 2400m
						205	700' (694') 3600m

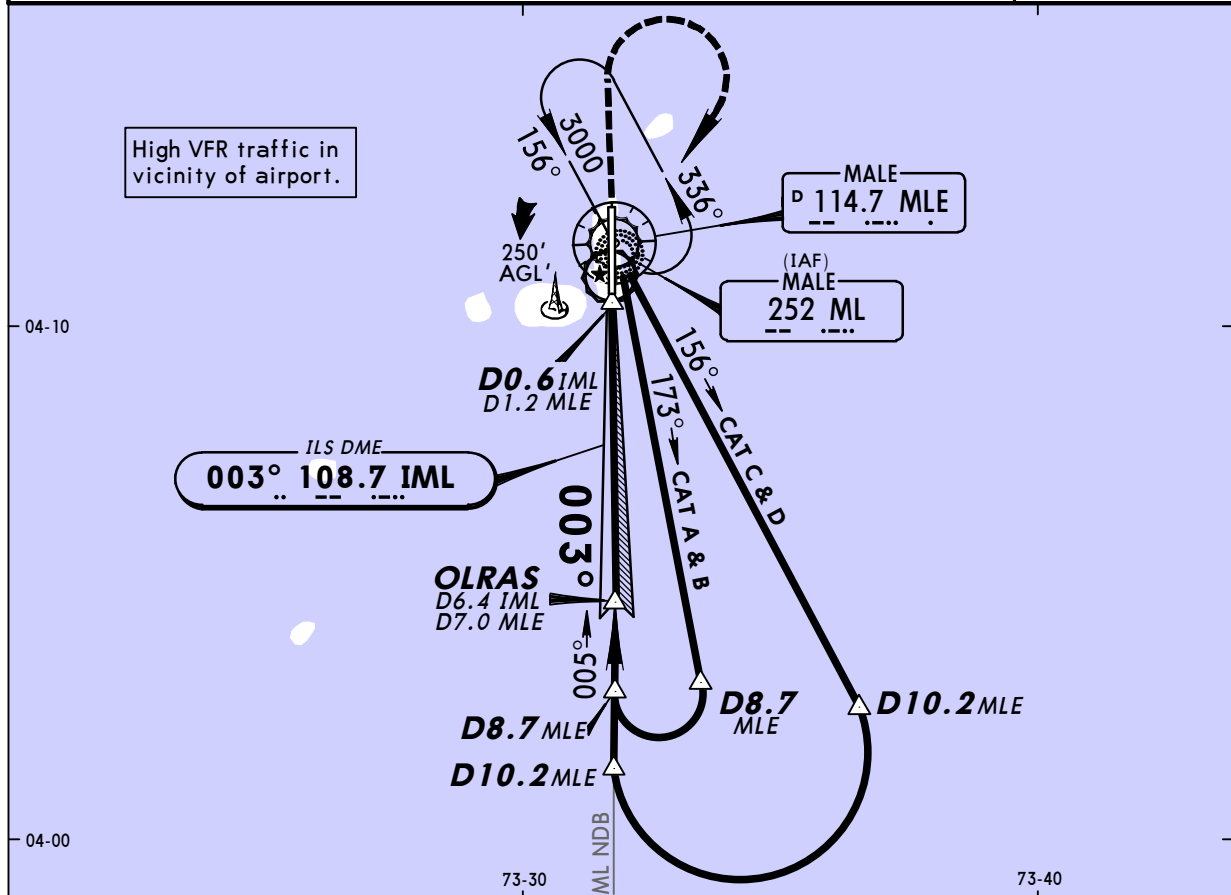
PANS OPS

VRMM/MLE
MALE INTL

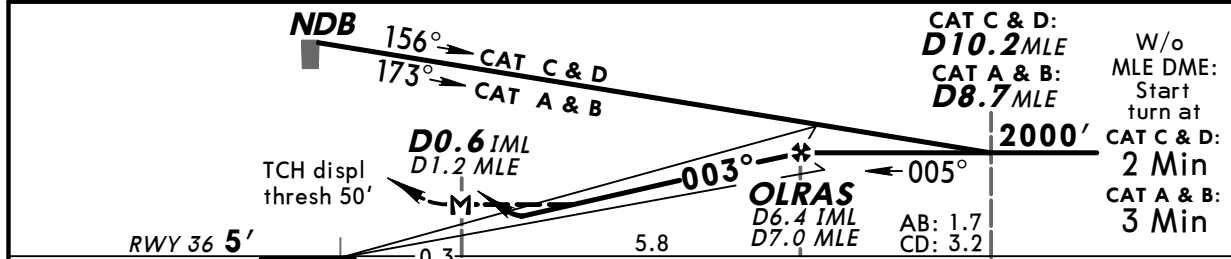
JEPPESEN
13 FEB 09 **(11-4)**

MALE, MALDIVES
NDB ILS DME Rwy 36

ATIS 125.5		MALE Control (APP) 119.7		MALE Tower 118.1		Ground 121.6		1500' MSA ML NDB
LOC IML 108.7	Final Apch Crs 003°	GS OLRAS 2000' (1995')	ILS DA(H) Refer to Minimums		Apt Elev 6' RWY 5'			
MISSED APCH: Climb STRAIGHT AHEAD to 3000', then turn RIGHT and proceed direct to NDB and hold, or as directed.								
Alt Set: hPa		Rwy Elev: 0 hPa		Trans level: By ATC		Trans alt: 11000'		



LOC (GS out)	IML DME	1.0	2.0	3.0	4.0	5.0	6.0
	ALTITUDE	320'	640'	950'	1270'	1590'	1910'
	MLE DME	2.0	3.0	4.0	5.0	6.0	
	ALTITUDE	430'	750'	1060'	1380'	1690'	



Gnd speed-Kts	70	90	100	120	140	160	HIALS PAPI PAPI 3000'
ILS GS 3.00° or LOC Desc Grad 5.2%	377	485	539	647	755	862	
MAP at D0.6 IML/D1.2 MLE							

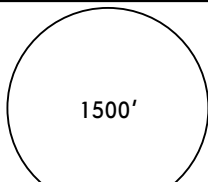
STRAIGHT-IN LANDING RWY 36				CIRCLE-TO-LAND			
ILS		LOC (GS out)					
DA(H) A: 310' (305') C: 329' (324')		MDA(H) 470' (465')					
B: 320' (315') D: 343' (338')							
FULL		ALS out		Max Kts		MDA(H)	
A				100	470' (464')	1600m	
B	1500m		1600m	135	500' (494')	1600m	
C	1600m		2000m	180	600' (594')	2400m	
D	1700m		2400m	205	700' (694')	3600m	

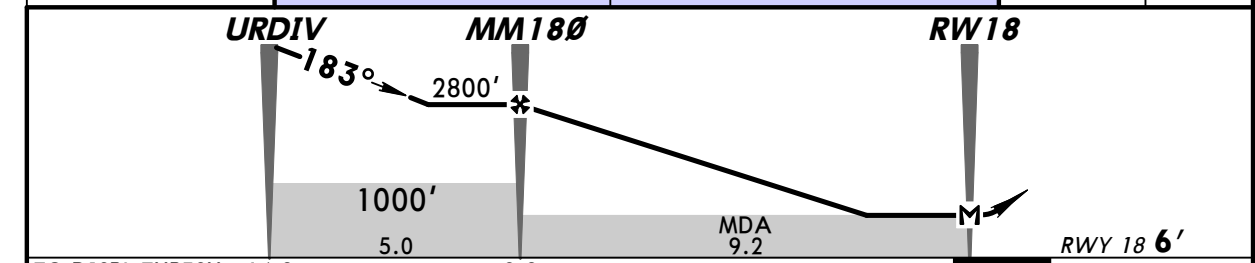
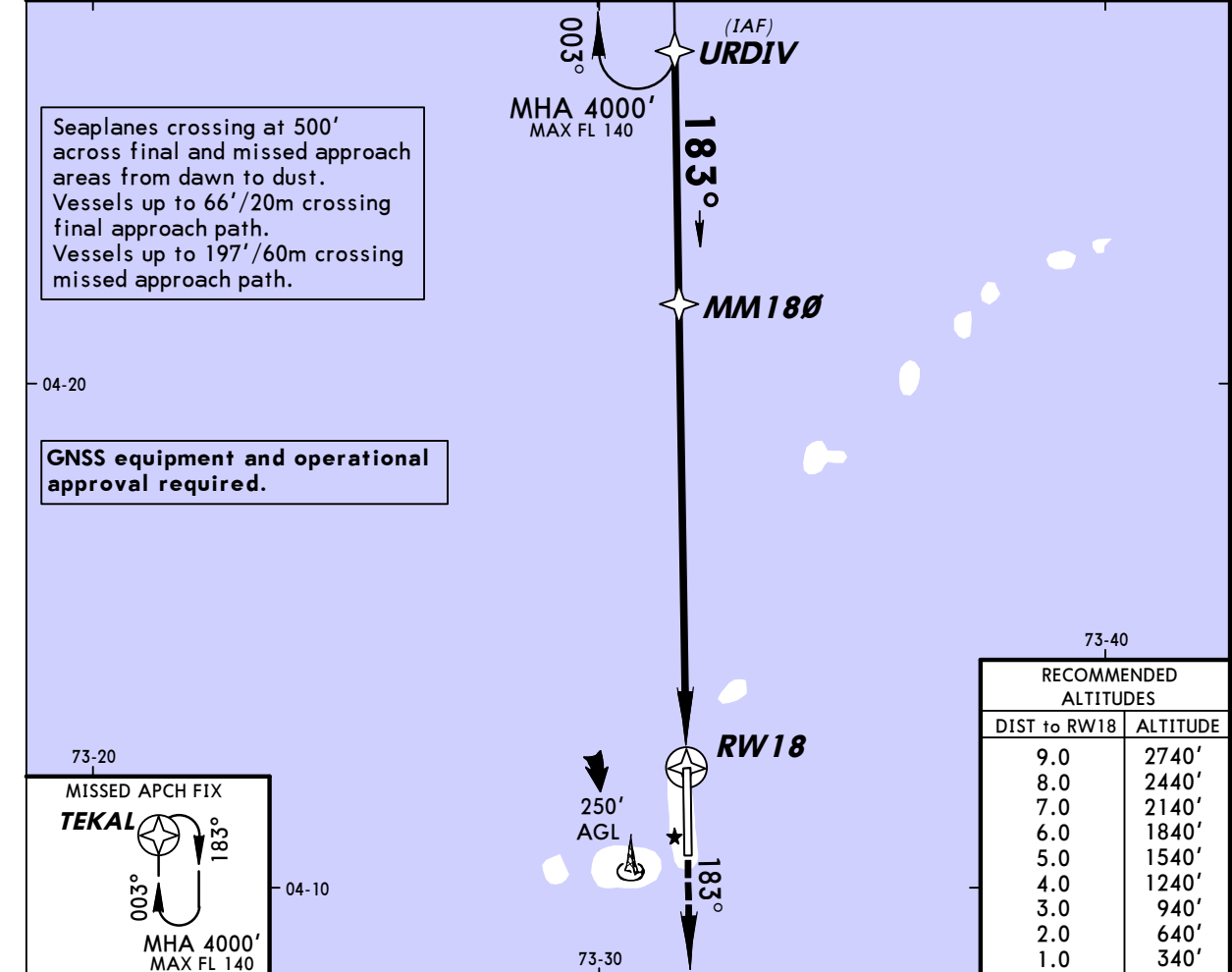
PANS OPS

VRMM/MLE
MALE INTL

JEPPESEN
16 JUL 10 (12-1) Eff 29 Jul

MALE, MALDIVES
RNAV (GNSS) Rwy 18

ATIS 125.5		MALE Control (APP/R) 119.7		MALE Tower 118.1		Ground 121.6		
RNAV	Final Apch Crs 183°	Procedure Alt MM180 2800' (2794')	LNAV/VNAV DA(H) 290' (284')	Apt Elev 6' RWY 6'		 1500' MSA ARP		
MISSED APCH: Climb STRAIGHT AHEAD to 4000' on 183° to TEKAL, or as directed.								
Alt Set: hPa Rwy Elev: 0 hPa Trans level: By ATC Trans alt: 11000'								



TO DISPL THRESH	14.2	9.2	0				PAPI	4000'	on	183°	TEKAL
Gnd speed-Kts	70	90	100	120	140	160					
Descent Angle	3.00°	372	478	531	637	743	849				
MAP at RW18											

STRAIGHT-IN LANDING RWY 18						
LNAV/VNAV DA(H) 290' (284')			LNAV MDA(H) 390' (384')			
A	1600m			1600m		
B						
C						
D						

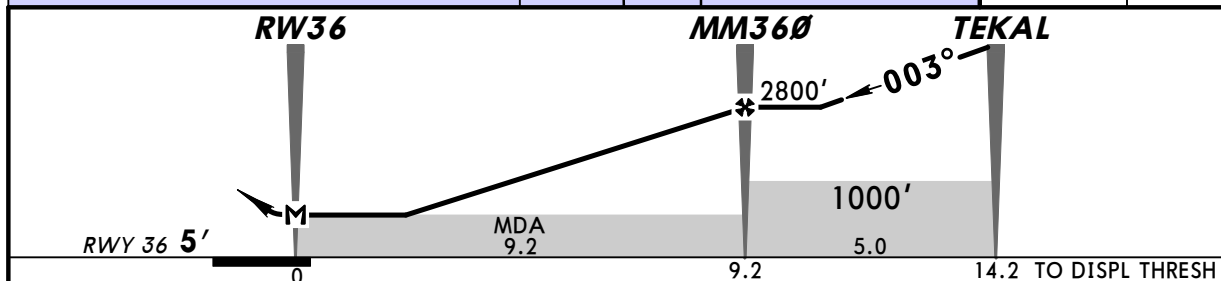
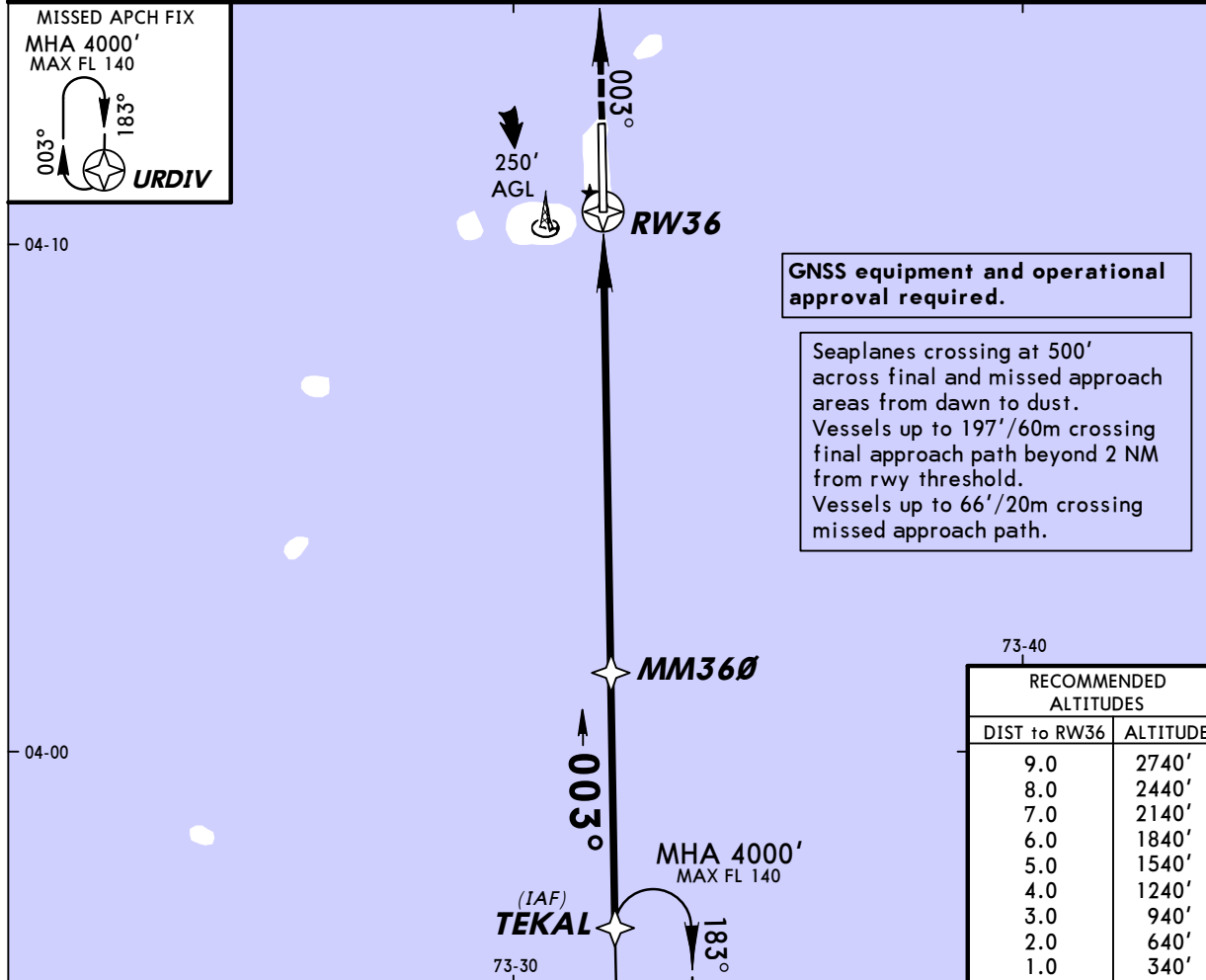
VRMM/MLE
MALE INTL

JEPPESEN
16 JUL 10 (12-2) Eff 29 Jul

MALE, MALDIVES
RNAV (GNSS) Rwy 36

BRIEFING STRIP™

ATIS 125.5		MALE Control (APP/R) 119.7		MALE Tower 118.1		Ground 121.6	
RNAV		Final Apch Crs 003°		Procedure Alt MM360 2800' (2795')		LNAV/VNAV DA(H) 320' (315')	
				Apt Elev 6'		<div style="border: 1px solid black; border-radius: 50%; width: 100px; height: 100px; display: flex; align-items: center; justify-content: center;"> 1500' </div>	
				RWY 5'			
MISSED APCH: Climb STRAIGHT AHEAD to 4000' on 003° to URDIV, or as directed.							
Alt Set: hPa		Rwy Elev: 0 hPa		Trans level: By ATC		Trans alt: 11000'	
1. RNP-0.30 required.		2. Minimum temperature -15°C (5°F).				MSA ARP	



Gnd speed-Kts	70	90	100	120	140	160	HIALS PAPI PAPI <div style="display: flex; align-items: center;"> <div style="border-left: 1px dashed black; width: 10px; height: 20px; margin-right: 5px;"></div> 4000' </div> on 003° URDIV
Descent Angle 3.00°	372	478	531	637	743	849	
MAP at RW36							

STRAIGHT-IN LANDING RWY 36	
LNAV/VNAV DA(H) 320' (315')	LNAV MDA(H) 390' (385')
ALS out	ALS out
1600m	1600m
1600m	2000m

PANS OPS

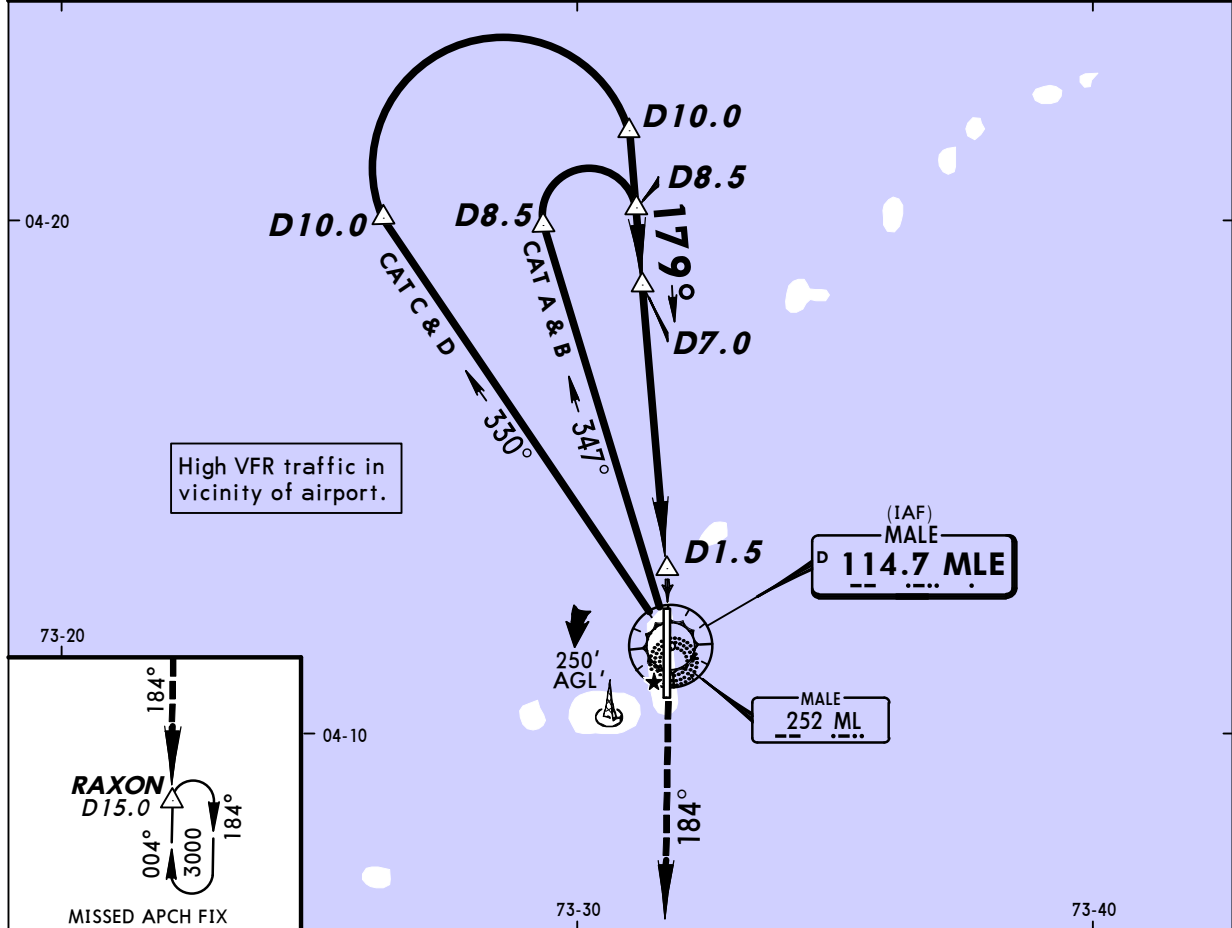
VRMM/MLE
MALE INTL

JEPPESEN
13 FEB 09 **(13-1)**

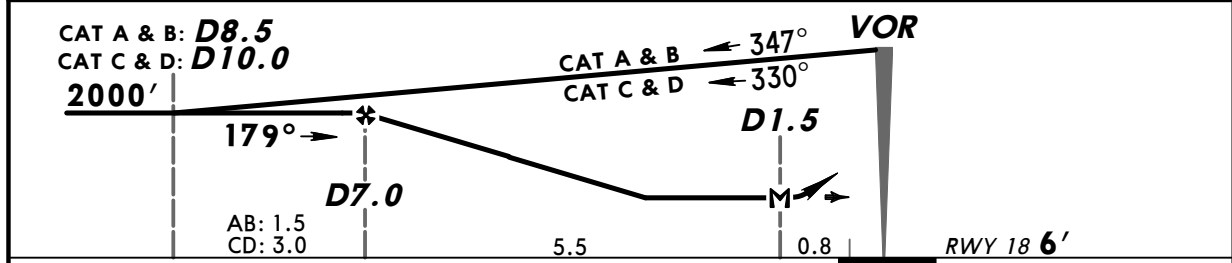
MALE, MALDIVES
VOR DME-1 Rwy 18

BRIEFING STRIP™

ATIS 125.5		MALE Control (APP) 119.7		MALE Tower 118.1		Ground 121.6		
VOR MLE 114.7	Final Apch Crs 179°	Minimum Alt D7.0 2000' (1994')	MDA(H) 380' (374')	Apt Elev 6' RWY 6'		<div style="border: 1px solid black; border-radius: 50%; width: 100px; height: 100px; margin: 0 auto;">1500'</div>		
MISSED APCH: Climb STRAIGHT AHEAD to VOR, then turn RIGHT to intercept R-184 climbing to 3000' and proceed to RAXON and hold, or as directed.								
Alt Set: hPa		Rwy Elev: 0 hPa		Trans level: By ATC				Trans alt: 11000'



MLE DME	6.0	5.0	4.0	3.0	2.0	1.0
ALTITUDE	1700'	1390'	1080'	770'	460'	150'



Gnd speed-Kts	70	90	100	120	140	160	PAPI	MLE 114.7	3000'	MLE on 114.7	R-184
Descent Gradient 5.1%	362	465	516	620	723	826					
MAP at D1.5											

STRAIGHT-IN LANDING RWY 18						CIRCLE-TO-LAND						
MDA(H) 380' (374')												
PANS OPS	A						Max Kts					
	B	1600m					100	400' (394')		1600m		
	C						135	500' (494')		1600m		
	D	2000m					180	600' (594')		2400m		
	205						700' (694')		3600m			

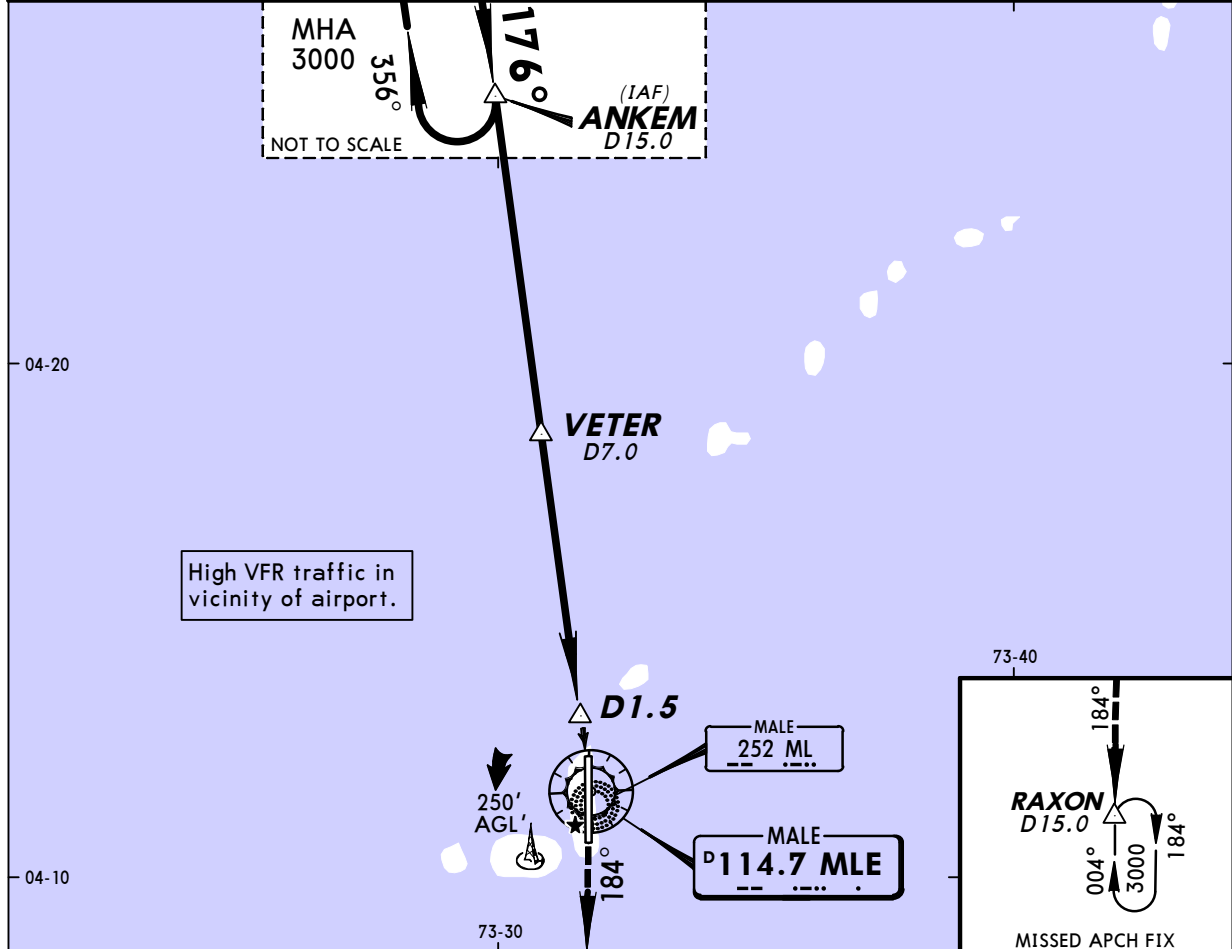
VRMM/MLE
MALE INTL

JEPPESEN
13 FEB 09 (13-2)

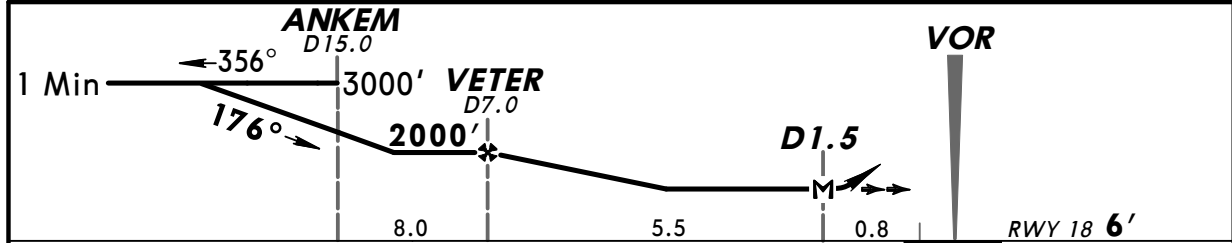
MALE, MALDIVES
VOR DME-2 Rwy 18

BRIEFING STRIP™

ATIS 125.5		MALE Control (APP) 119.7		MALE Tower 118.1		Ground 121.6	
VOR MLE 114.7	Final Apch Crs 176°	Minimum Alt VETER 2000' (1994')	MDA(H) 380' (374')	Apt Elev 6' RWY 6'		1500'	
MISSED APCH: Climb STRAIGHT AHEAD to VOR, then turn RIGHT to intercept R-184 climbing to 3000' and proceed to RAXON and hold, or as directed.							
Alt Set: hPa		Rwy Elev: 0 hPa		Trans level: By ATC		Trans alt: 11000'	
							MSA MLE VOR



MLE DME	6.0	5.0	4.0	3.0	2.0	1.0
ALTITUDE	1700'	1390'	1080'	770'	460'	150'



Gnd speed-Kts	70	90	100	120	140	160	PAPI	MLE 114.7	3000' on RT R-184
Descent Gradient 5.1%	362	465	516	620	723	826			
MAP at D1.5									

STRAIGHT-IN LANDING RWY 18				CIRCLE-TO-LAND			
MDA(H) 380' (374')				Max Kts			
A				100	400' (394')	1600m	
B	1600m			135	500' (494')	1600m	
C				180	600' (594')	2400m	
D	2000m			205	700' (694')	3600m	

PANS OPS

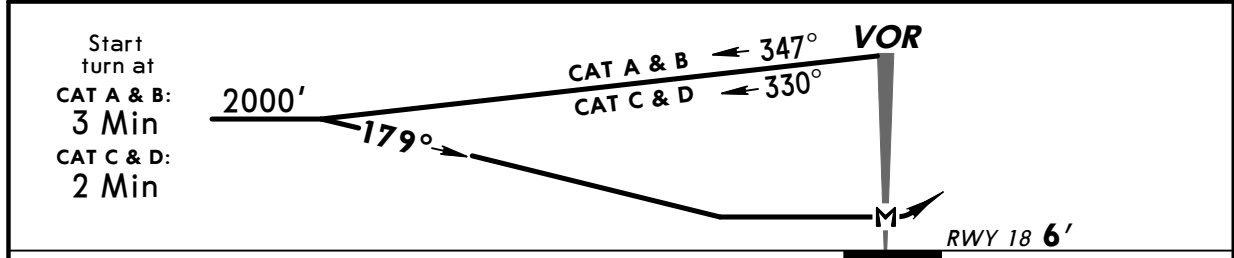
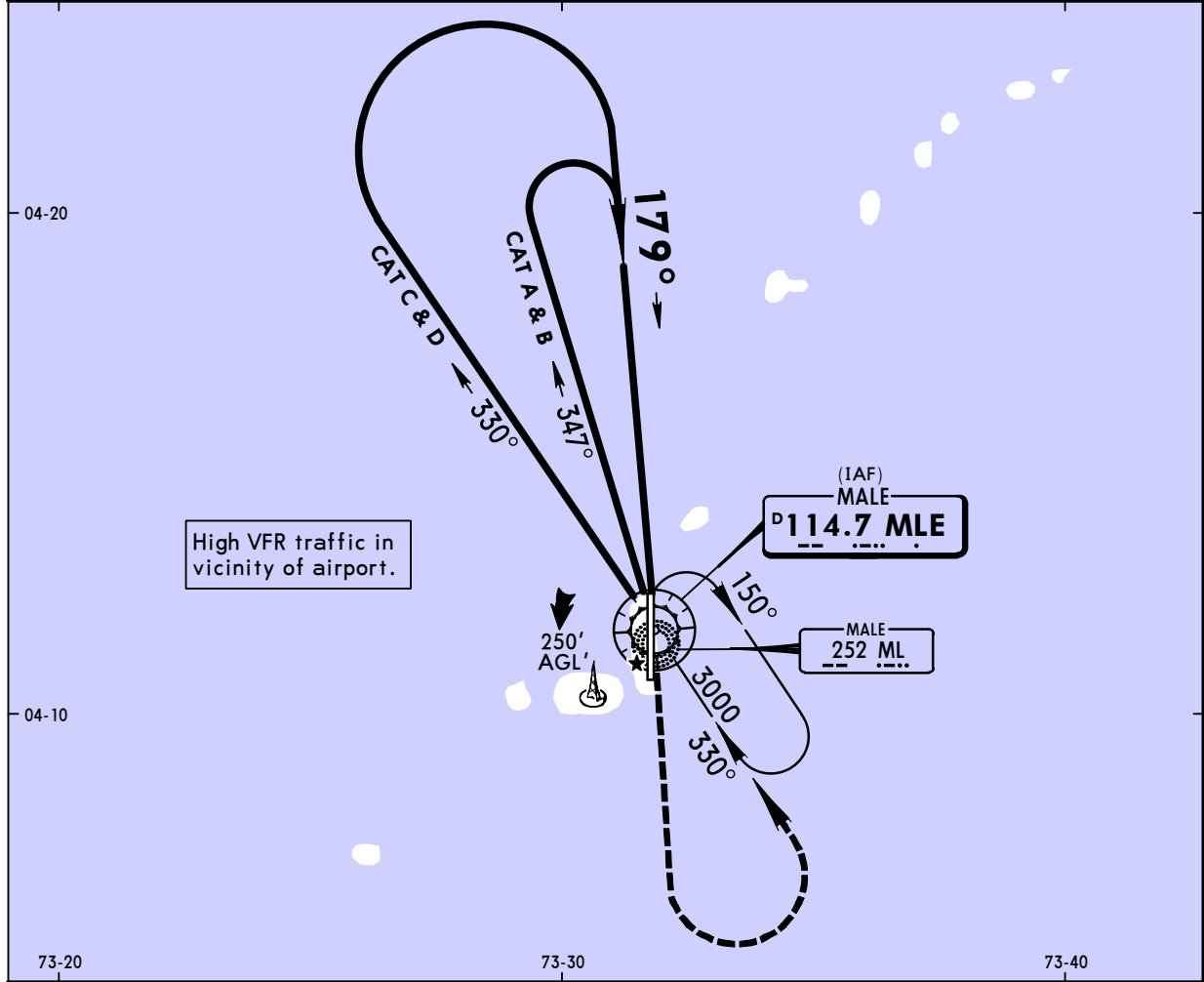
VRMM/MLE
MALE INTL

JEPPESEN
13 FEB 09 **(13-3)**

MALE, MALDIVES
VOR Rwy 18

BRIEFING STRIP™

ATIS 125.5		MALE Control (APP) 119.7		MALE Tower 118.1		Ground 121.6	
VOR MLE 114.7	Final Apch Crs 179°	Minimum Alt No FAF	MDA(H) 380' (374')	Apt Elev 6'	<div style="border: 1px solid black; border-radius: 50%; width: 100px; height: 100px; margin: 0 auto;">1500'</div>		
MISSED APCH: Climb STRAIGHT AHEAD to 3000', then turn LEFT and proceed direct to VOR and hold, or as directed.							
Alt Set: hPa		Rwy Elev: 0 hPa		Trans level: By ATC		Trans alt: 11000'	
							<i>MSA MLE VOR</i>



						PAPI	3000' ↑
MAP at VOR							

STRAIGHT-IN LANDING RWY 18			CIRCLE-TO-LAND		
MDA(H) 380' (374')			Max Kts	MDA(H)	
A			100	400' (394')	1600m
B	1600m		135	500' (494')	1600m
C			180	600' (594')	2400m
D	2000m		205	700' (694')	3600m

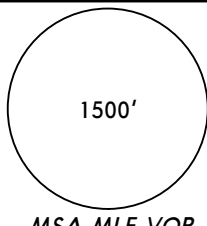
PANS OPS

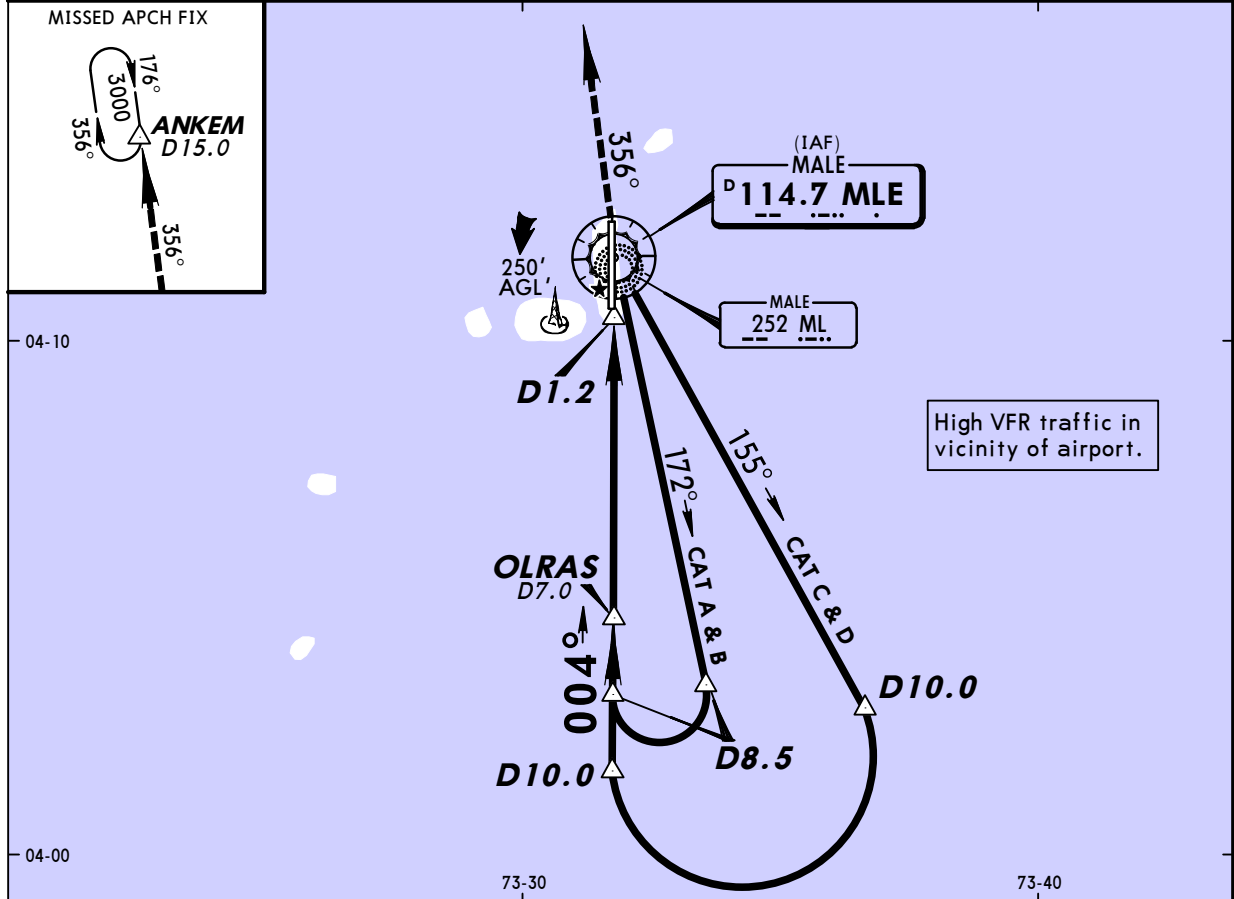
VRMM/MLE
MALE INTL

JEPPESEN
13 FEB 09 **(13-4)**

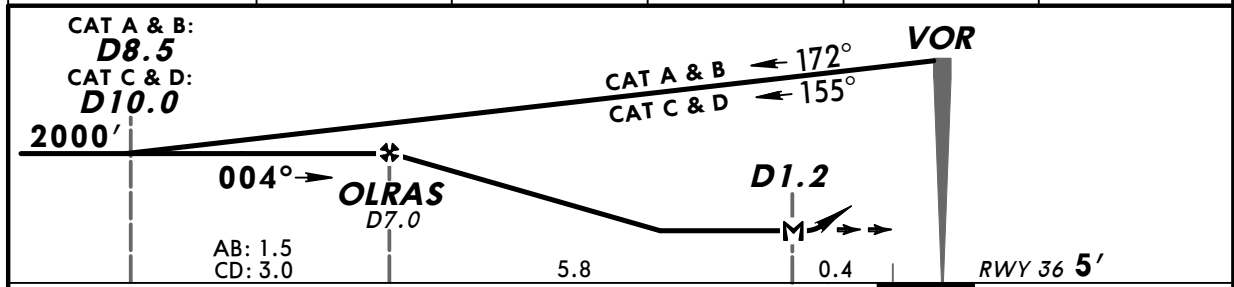
MALE, MALDIVES
VOR DME-1 Rwy 36

BRIEFING STRIP™

ATIS 125.5		MALE Control (APP) 119.7		MALE Tower 118.1		Ground 121.6	
VOR MLE 114.7	Final Apch Crs 004°	Minimum Alt OLRAS 2000' (1995')	MDA(H) 470' (465')	Apt Elev 6'			
MISSED APCH: Climb STRAIGHT AHEAD to VOR, then turn LEFT to intercept R-356 climbing to 3000' and proceed to ANKEM and hold, or as directed.							
Alt Set: hPa		Rwy Elev: 0 hPa		Trans level: By ATC		Trans alt: 11000'	
							MSA MLE VOR



MLE DME	6.0	5.0	4.0	3.0	2.0
ALTITUDE	1690'	1380'	1060'	750'	430'



Gnd speed-Kts	70	90	100	120	140	160	HIALS PAPI PAPI MLE 114.7 3000' MLE on 114.7 LT R-356
Descent Gradient 5.2%	369	474	527	632	737	843	
MAP at D1.2							

STRAIGHT-IN LANDING RWY 36			CIRCLE-TO-LAND		
MDA(H) 470' (465')			Max Kts		
ALS out			MDA(H)		
A			100	470' (464')	1600m
B	1600m		135	500' (494')	1600m
C	2000m		180	600' (594')	2400m
D	2400m		205	700' (694')	3600m

PANS OPS

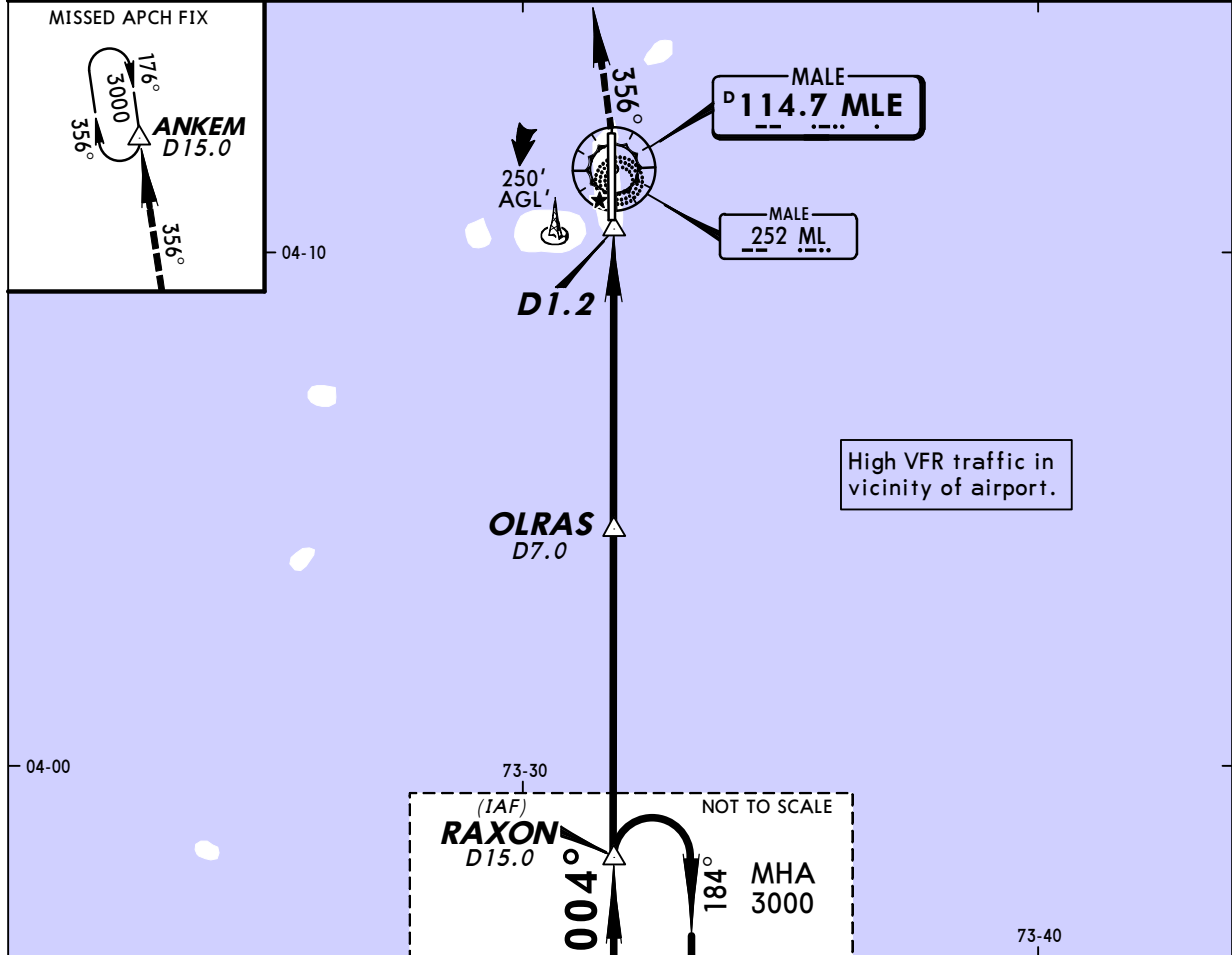
VRMM/MLE
MALE INTL

JEPPESEN
13 FEB 09 **(13-5)**

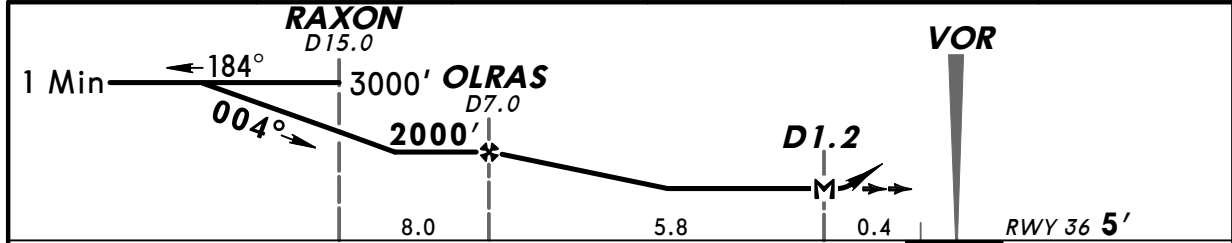
MALE, MALDIVES
VOR DME-2 Rwy 36

BRIEFING STRIP™

ATIS 125.5		MALE Control (APP) 119.7		MALE Tower 118.1	Ground 121.6
VOR MLE 114.7	Final Apch Crs 004°	Minimum Alt OLRAS 2000' (1995')	MDA(H) 470' (465')	Apt Elev 6' RWY 5'	1500'
MISSED APCH: Climb STRAIGHT AHEAD to VOR, then turn LEFT to intercept R-356 climbing to 3000' and proceed to ANKEM and hold, or as directed.					
Alt Set: hPa		Rwy Elev: 0 hPa		Trans level: By ATC	Trans alt: 11000'
					MSA MLE VOR



MLE DME	6.0	5.0	4.0	3.0	2.0
ALTITUDE	1690'	1380'	1060'	750'	430'



Gnd speed-Kts	70	90	100	120	140	160	HIALS PAPI PAPI MLE 114.7 3000' on MLE 114.7 PAPI LT R-356
Descent Gradient 5.2%	369	474	527	632	737	843	
MAP at D1.2							

STRAIGHT-IN LANDING RWY 36		CIRCLE-TO-LAND	
MDA(H) 470' (465')			
ALS out		Max Kts	MDA(H)
A		100	470' (464') 1600m
B	1600m	135	500' (494') 1600m
C	2000m	180	600' (594') 2400m
D	2400m	205	700' (694') 3600m

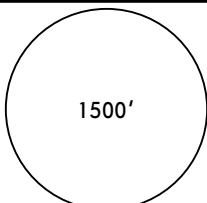
PANS OPS

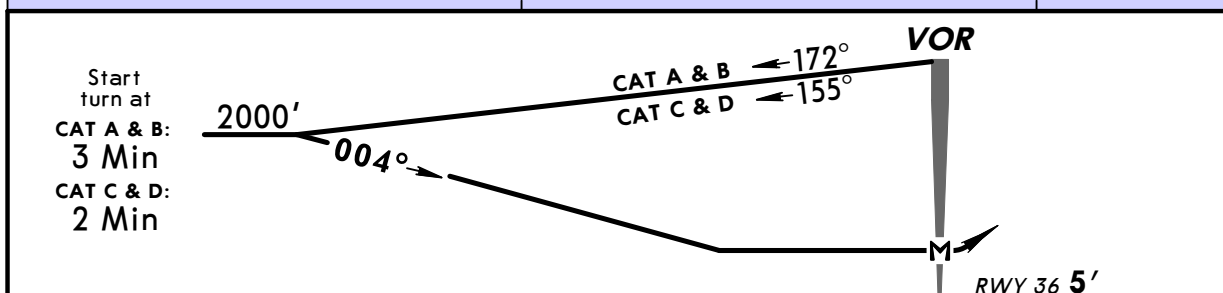
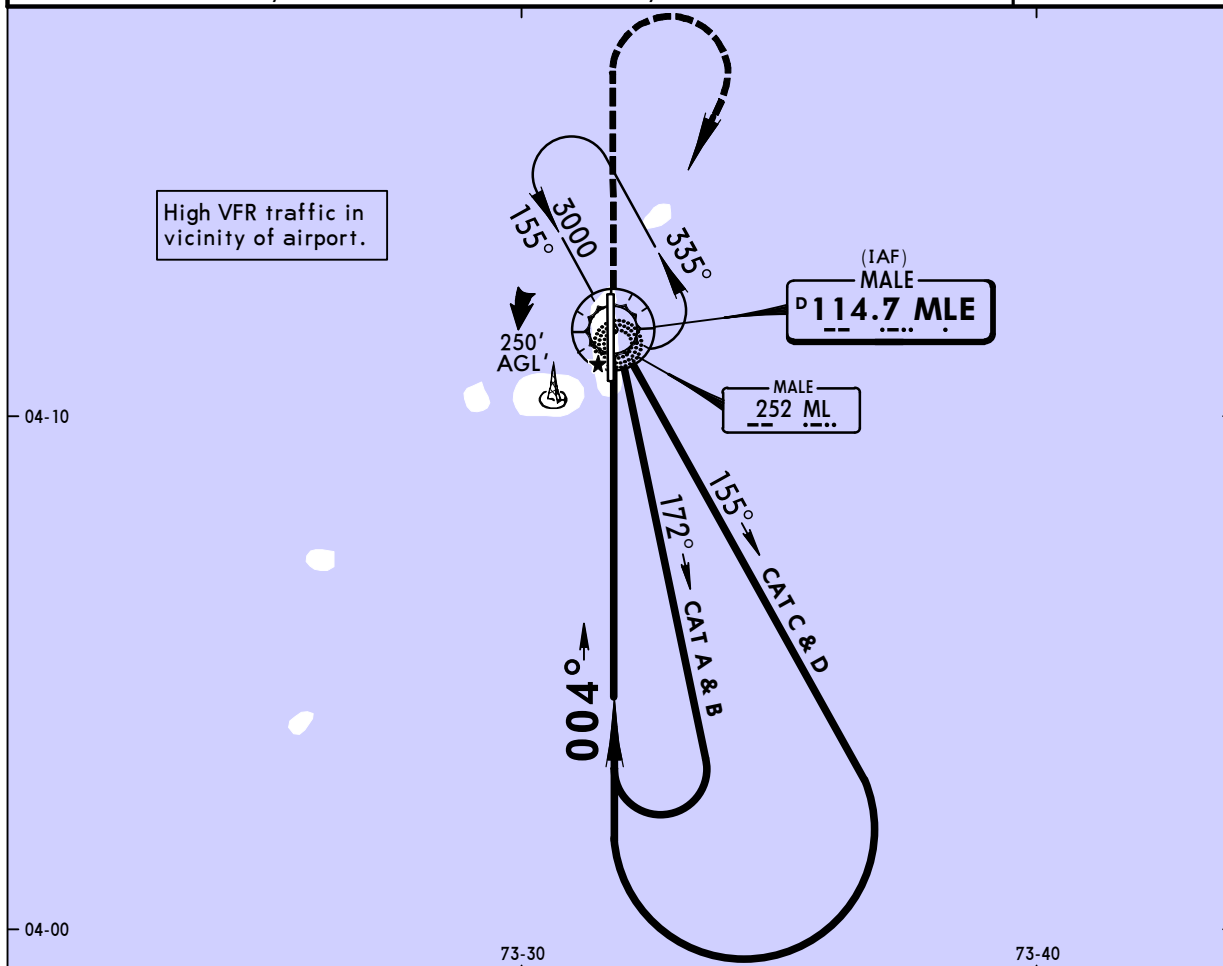
VRMM/MLE
MALE INTL

JEPPESEN
 13 FEB 09 (13-6)

MALE, MALDIVES
VOR Rwy 36

BRIEFING STRIP™

ATIS 125.5		MALE Control (APP) 119.7		MALE Tower 118.1	Ground 121.6
VOR MLE 114.7	Final Apch Crs 004°	Minimum Alt No FAF	MDA(H) 470' (465')	Apt Elev 6' RWY 5'	 1500'
MISSED APCH: Climb STRAIGHT AHEAD to 3000', then turn RIGHT and proceed direct to VOR and hold, or as directed.					
Alt Set: hPa		Rwy Elev: 0 hPa	Trans level: By ATC		



					HIALS PAPI PAPI		3000' ↑
MAP at VOR							

	STRAIGHT-IN LANDING RWY 36		CIRCLE-TO-LAND	
	ALS out	MDA(H) 470' (465')	Max Kts	MDA(H)
A			100	470' (464') 1600m
B	1600m		135	500' (494') 1600m
C	2000m		180	600' (594') 2400m
D	2400m		205	700' (694') 3600m

PANS OPS

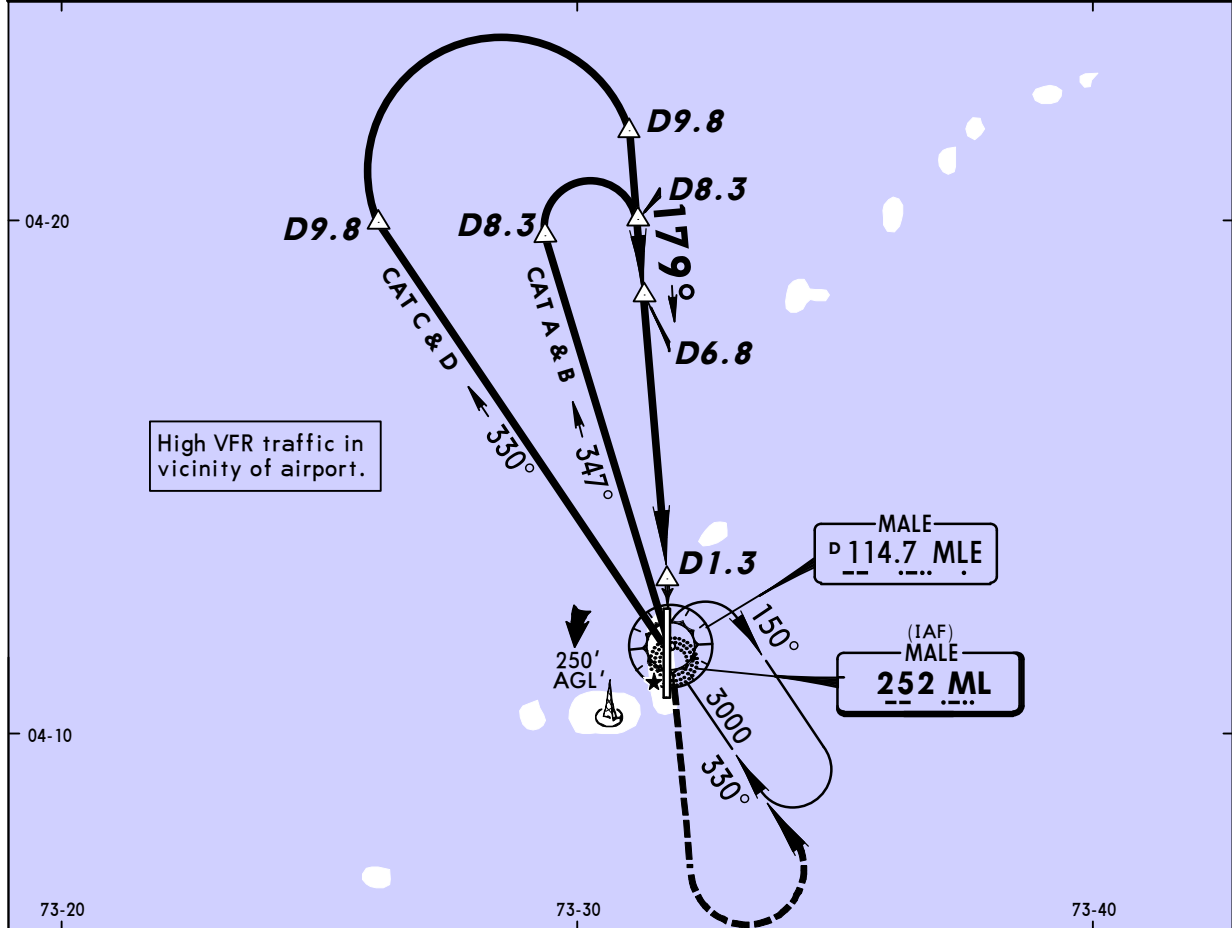
VRMM/MLE
MALE INTL

JEPPESEN
13 FEB 09 **(16-1)**

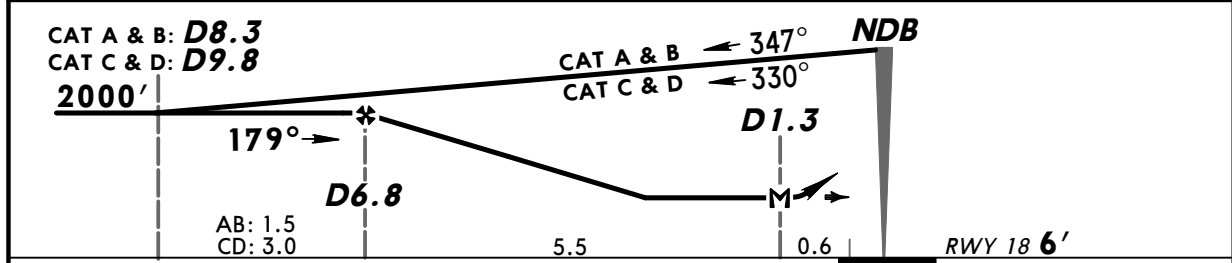
MALE, MALDIVES
NDB DME Rwy 18

BRIEFING STRIP™

ATIS 125.5		MALE Control (APP) 119.7		MALE Tower 118.1		Ground 121.6	
NDB ML 252	Final Apch Crs 179°	Minimum Alt D6.8 2000' (1994')	MDA(H) 380' (374')	Apt Elev 6' RWY 6'		<div style="border: 1px solid black; border-radius: 50%; width: 100px; height: 100px; margin: 0 auto;">1500'</div>	
MISSED APCH: Climb STRAIGHT AHEAD to 3000', then turn LEFT to NDB and hold, or as directed.							
Alt Set: hPa		Rwy Elev: 0 hPa		Trans level: By ATC		Trans alt: 11000'	
							MSA ML NDB



MLE DME	6.0	5.0	4.0	3.0	2.0	1.0
ALTITUDE	1740'	1420'	1110'	790'	470'	150'



Gnd speed-Kts	70	90	100	120	140	160	PAPI 3000' ↑
Descent Gradient	5.2%	369	474	527	632	737	
MAP at D1.3							

STRAIGHT-IN LANDING RWY 18		CIRCLE-TO-LAND	
MDA(H) 380' (374')		Max Kts	MDA(H)
A		100	400' (394') 1600m
B	1600m	135	500' (494') 1600m
C		180	600' (594') 2400m
D	2000m	205	700' (694') 3600m

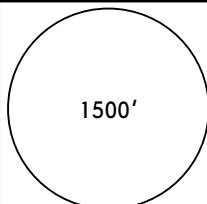
PANS OPS

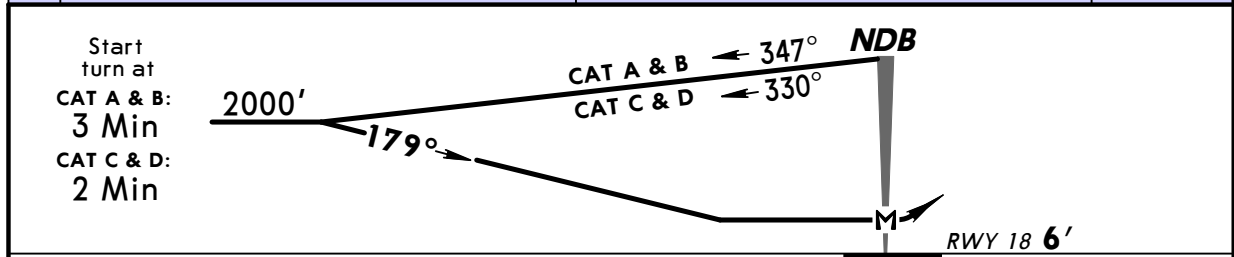
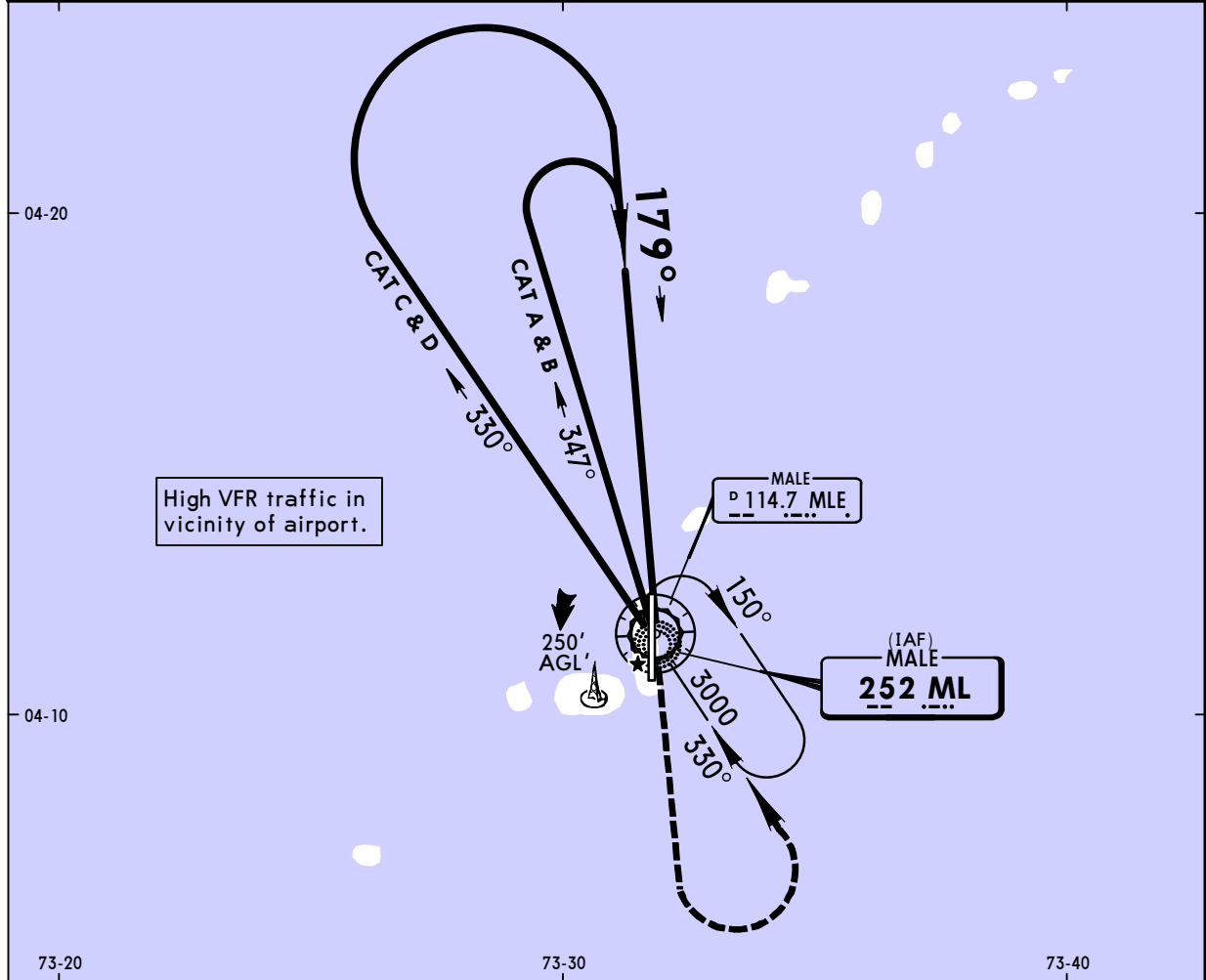
VRMM/MLE
MALE INTL

JEPPESEN
13 FEB 09 (16-2)

MALE, MALDIVES
NDB Rwy 18

BRIEFING STRIP™

ATIS 125.5		MALE Control (APP) 119.7		MALE Tower 118.1		Ground 121.6	
NDB ML 252	Final Apch Crs 179°	Minimum Alt No FAF	MDA(H) 380' (374')	Apt Elev 6'			
MISSED APCH: Climb STRAIGHT AHEAD to 3000', then turn LEFT to NDB and hold, or as directed.							
Alt Set: hPa		Rwy Elev: 0 hPa		Trans level: By ATC		Trans alt: 11000'	



						PAPI	3000'
MAP at NDB							

STRAIGHT-IN LANDING RWY 18			CIRCLE-TO-LAND		
MDA(H) 380' (374')			Max Kts	MDA(H)	
A			100	400' (394')	1600m
B		1600m	135	500' (494')	1600m
C			180	600' (594')	2400m
D		2000m	205	700' (694')	3600m

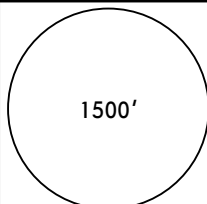
PANS OPS

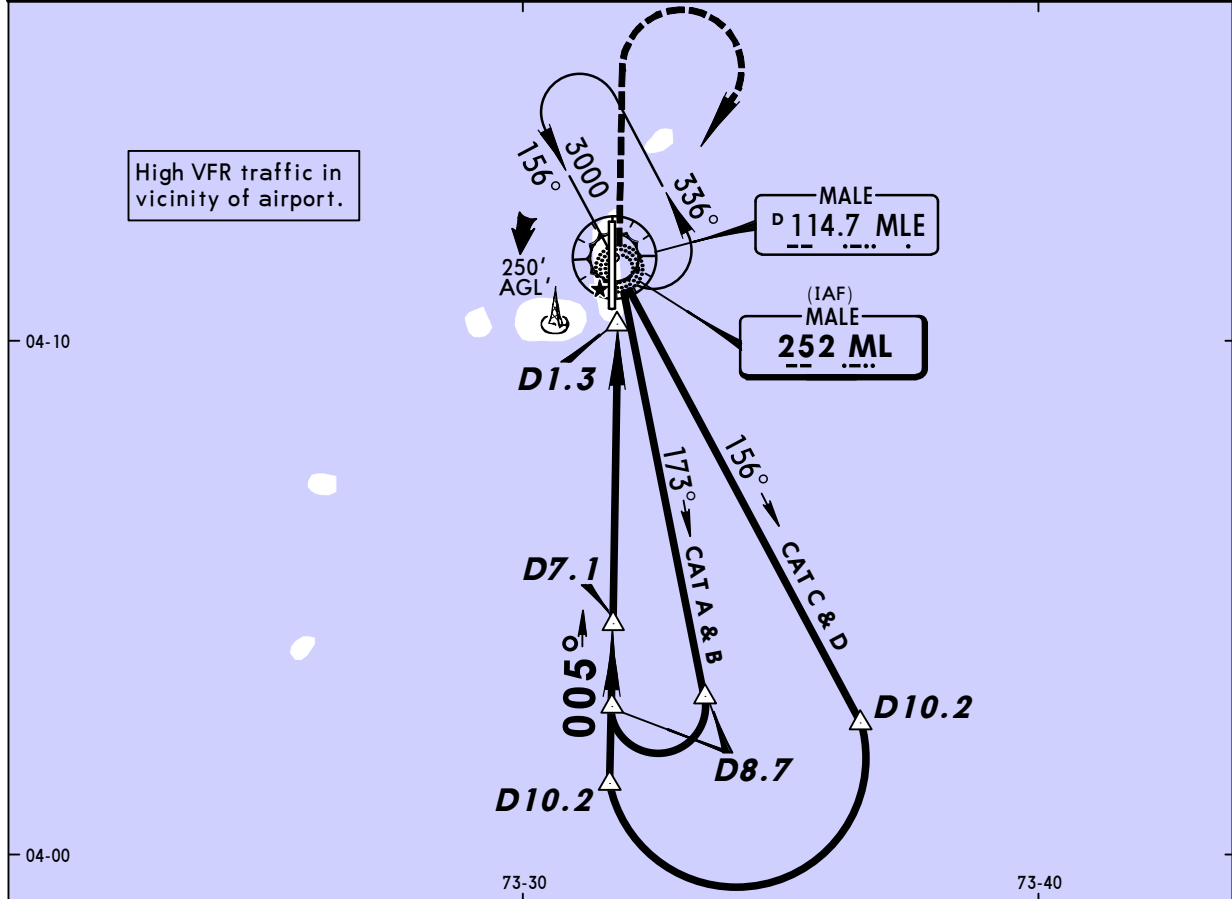
VRMM/MLE
MALE INTL

JEPPESEN
13 FEB 09 (16-3)

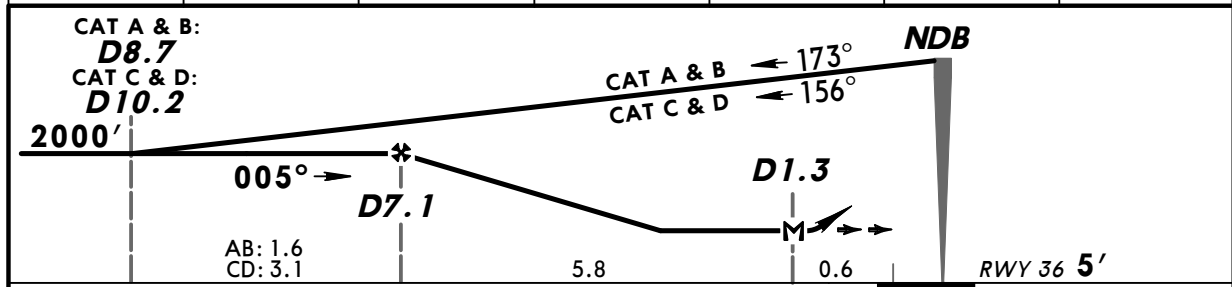
MALE, MALDIVES
NDB DME Rwy 36

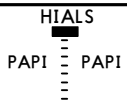
BRIEFING STRIP™

ATIS 125.5		MALE Control (APP) 119.7		MALE Tower 118.1	Ground 121.6
NDB ML 252	Final Apch Crs 005°	Minimum Alt D7.1 2000' (1995')	MDA(H) 470' (465')	Apt Elev 6' RWY 5'	 1500' MSA ML NDB
MISSED APCH: Climb STRAIGHT AHEAD to 3000', then turn RIGHT to NDB and hold, or as directed.					
Alt Set: hPa		Rwy Elev: 0 hPa		Trans level: By ATC	



MLE DME	7.0	6.0	5.0	4.0	3.0	2.0
ALTITUDE	1970'	1670'	1370'	1060'	760'	450'



Gnd speed-Kts	70	90	100	120	140	160	 3000' ↑
Descent Gradient 5.0%	354	456	506	608	709	810	
MAP at D1.3							

STRAIGHT-IN LANDING RWY 36		CIRCLE-TO-LAND	
MDA(H) 470' (465')			
ALS out		Max Kts	MDA(H)
A		100	470' (464') 1600m
B	1600m	135	500' (494') 1600m
C	2000m	180	600' (594') 2400m
D	2400m	205	700' (694') 3600m

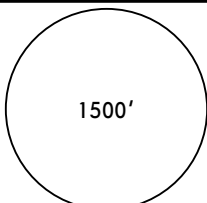
PANS OPS

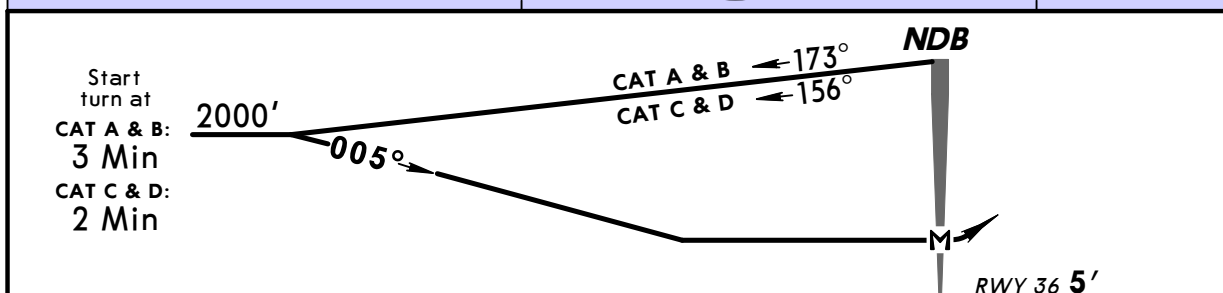
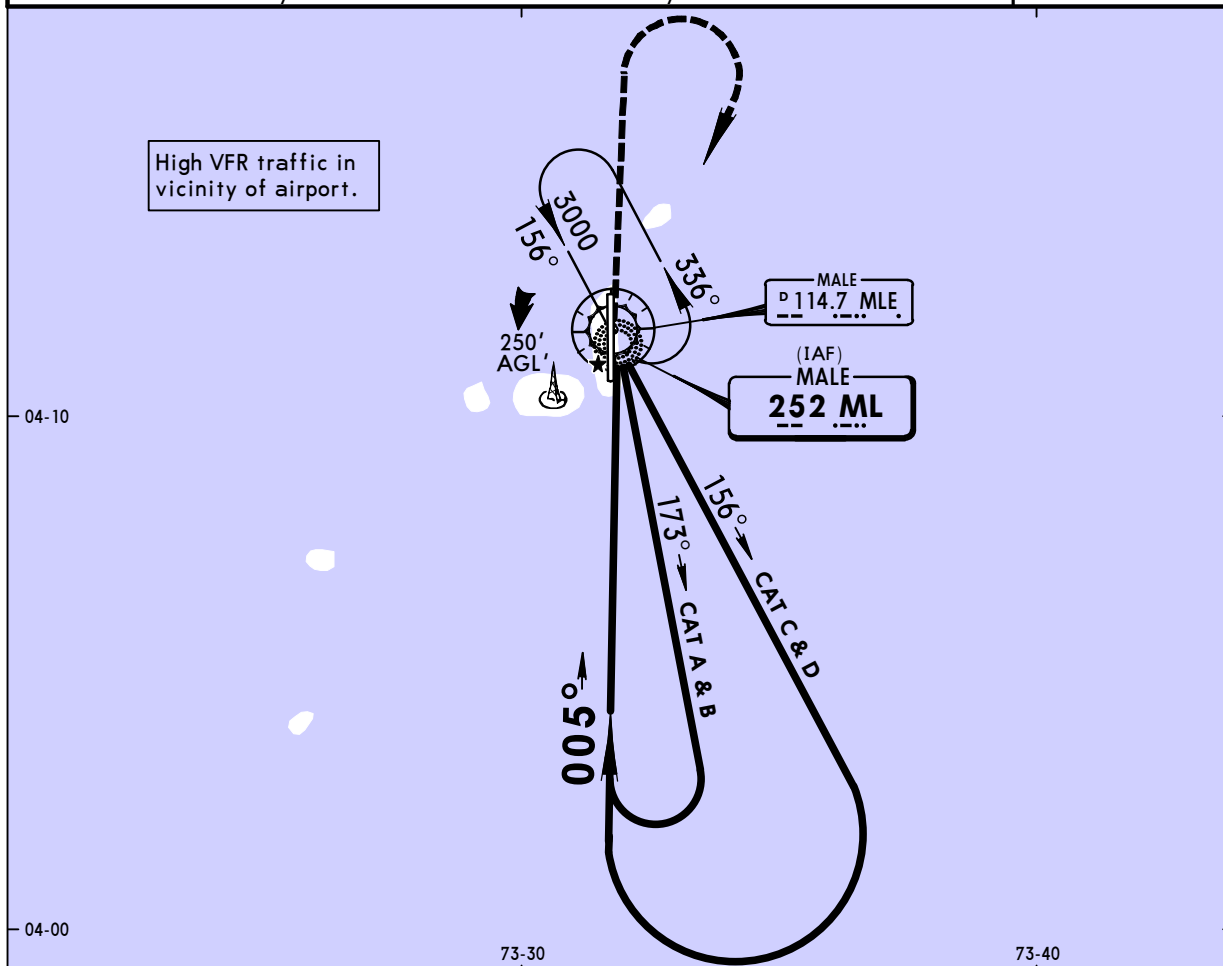
VRMM/MLE
MALE INTL

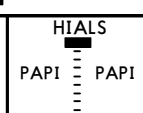
JEPPESEN
 13 FEB 09 **16-4**

MALE, MALDIVES
NDB Rwy 36

BRIEFING STRIP™

ATIS 125.5		MALE Control (APP) 119.7		MALE Tower 118.1	Ground 121.6
NDB ML 252	Final Apch Crs 005°	Minimum Alt No FAF	MDA(H) 470' (465')	Apt Elev 6' RWY 5'	 <p>1500'</p>
MISSED APCH: Climb STRAIGHT AHEAD to 3000', then turn RIGHT to NDB and hold, or as directed.					
Alt Set: hPa		Rwy Elev: 0 hPa	Trans level: By ATC	Trans alt: 11000'	



							3000'
MAP at NDB							↑

	STRAIGHT-IN LANDING RWY 36		CIRCLE-TO-LAND	
	ALS out	MDA(H) 470' (465')	Max Kts	MDA(H)
A			100	470' (464') 1600m
B	1600m		135	500' (494') 1600m
C	2000m		180	600' (594') 2400m
D	2400m		205	700' (694') 3600m

PANS OPS