

## Airport information:

Country: Venezuela

City: MAIQUETIA

Coordinates: N 10° 36.1', W 066° 59.5'

Elevation: 234

Customs: Customs

Fuel: 100, JET A1

RFF: CAT 9

hours: H24.

## Runways:

Runway 09

Takeoff length: 3000, Landing length:

Runway 10

Takeoff length: 3500, Landing length: 3500

Runway 27

Takeoff length: NA, Landing length: NA

Runway 28

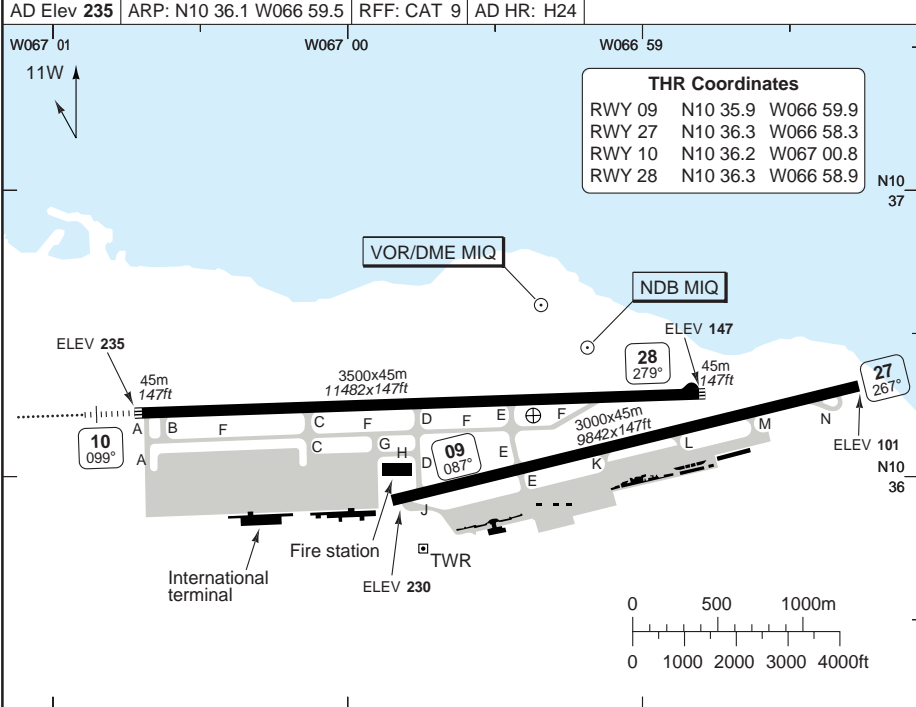
Takeoff length: 3500, Landing length: 3500

# AERODROME

## Simon Bolivar INTL MAIQUETIA

10 - 1

Maiquetia DLV / CLR <b>119.5</b>	GND <b>121.7</b> <b>121.9</b>	TWR <b>118.1</b> <b>118.4</b>	ATIS <b>114.8</b>
AD Elev <b>235</b>	ARP: N10 36.1 W066 59.5	RFF: CAT 9	AD HR: H24



RWY	Slope	TORA m/ft	LDA m/ft	ALS	REDL	Additional
09	-1.5	3000 / 9842	Not usable	-	avbl	-
27	+1.5	Not usable	3000 / 9842 ①	-	avbl	-
10	-0.8	3500 / 11482	3500 / 11482	M-I	avbl	P3°
28	+0.8	3500 / 11482	3500 / 11482	-	avbl	-

① Last 1800m/ 5905ft declared as SWY.

RWY	TAKE OFF MINIMA	
	1-2 ENG	3-4 ENG
09, 10/28	1.6km	0.8km

GENERAL INFORMATION	
<p><b>1. SPEED</b> MAX 250kt below 10000ft within TMA.</p> <p><b>2. WARNING</b> Bird Hazard.</p> <p><b>3. VORTEST</b> 113.0 0° FROM.</p>	<p><b>4. NOTE</b> RWY 10/28: AUW 333t on first 300m/984ft. TWY F may be used as an emergency RWY 10R/28L, 2400x30m/7874x98ft.</p>

© Navtech - svmi01laorgo

Reverse side blank

Change: New spec.

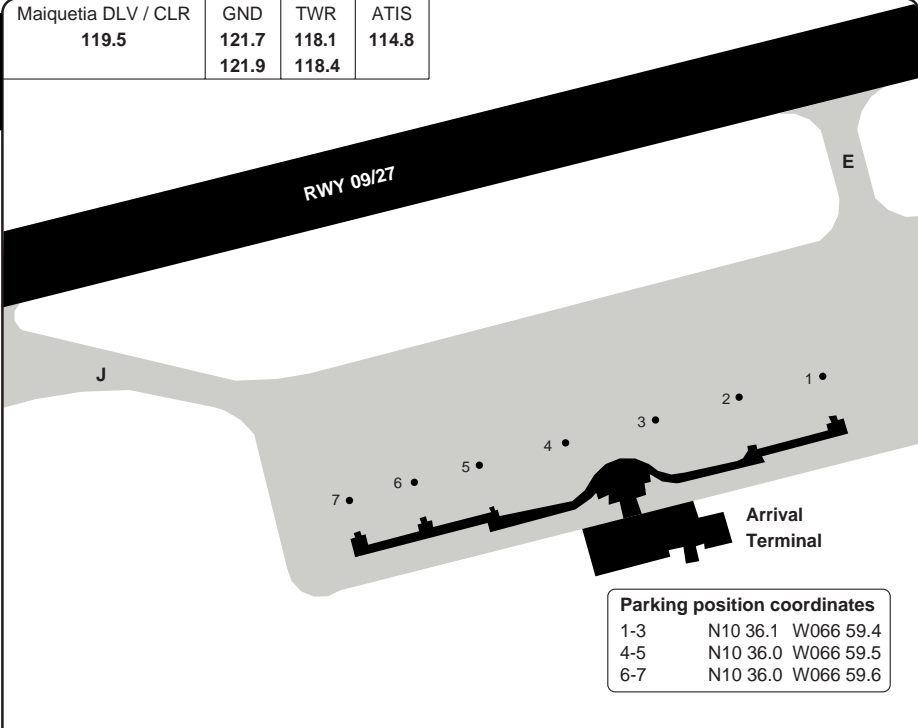
**THIS CHART IS A PART OF NAVIGRAPH NDAC AND IS INTENDED FOR FLIGHT SIMULATION USE ONLY**

# AERODROME

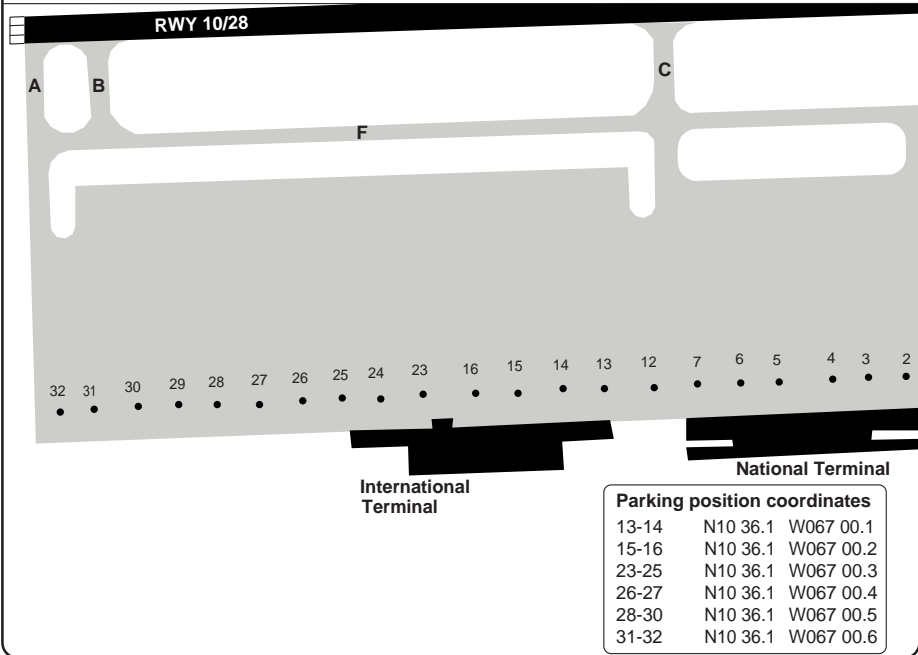
## Simon Bolivar INTL MAIQUETIA

10 - 2

Maiquetia DLV / CLR 119.5	GND 121.7 121.9	TWR 118.1 118.4	ATIS 114.8
------------------------------	-----------------------	-----------------------	---------------



Parking position coordinates		
1-3	N10 36.1	W066 59.4
4-5	N10 36.0	W066 59.5
6-7	N10 36.0	W066 59.6



Parking position coordinates		
13-14	N10 36.1	W067 00.1
15-16	N10 36.1	W067 00.2
23-25	N10 36.1	W067 00.3
26-27	N10 36.1	W067 00.4
28-30	N10 36.1	W067 00.5
31-32	N10 36.1	W067 00.6

© Navitech - svmi02laorg0

Change: New spec.

**THIS CHART IS A PART OF NAVIGRAPH NDAC AND IS INTENDED FOR FLIGHT SIMULATION USE ONLY**

Maiquetia TWR	GND	ATIS
118.1	121.7	114.8
118.4	121.9	

TL ATC AD Elev 235

R2528  
1500-FL190

R2521  
UNL

54nm

4000

SECTOR B

35nm

2000

SECTOR A

REKON  
N10 53.0  
W067 04.4

DARPA  
N10 53.3  
W066 55.3

MARES  
N10 47.4  
W067 12.8

KORLI  
N10 47.7  
W066 46.3

ROMEX  
N10 39.7  
W067 23.8

OSMAR  
N10 43.9  
W066 33.6

277°

5nm

310°

3nm

065°

10nm

082°

20nm

093°

R2503  
7000 GND

Maiquetia  
D114.8 MIQ  
N10 36.6  
W066 59.4

R2532  
12000

× R2504  
9000

R2502  
UNL

R2531  
UNL



RADAR Minimum Altitudes

20 - 1 | 05 MAY 10

Simon Bolivar INTL MAIQUETIA

Venezuela - SVMI / CCS

Change: New spec.  
THIS CHART IS A PART OF NAVIGRAPH NDAC AND IS INTENDED FOR FLIGHT SIMULATION USE ONLY

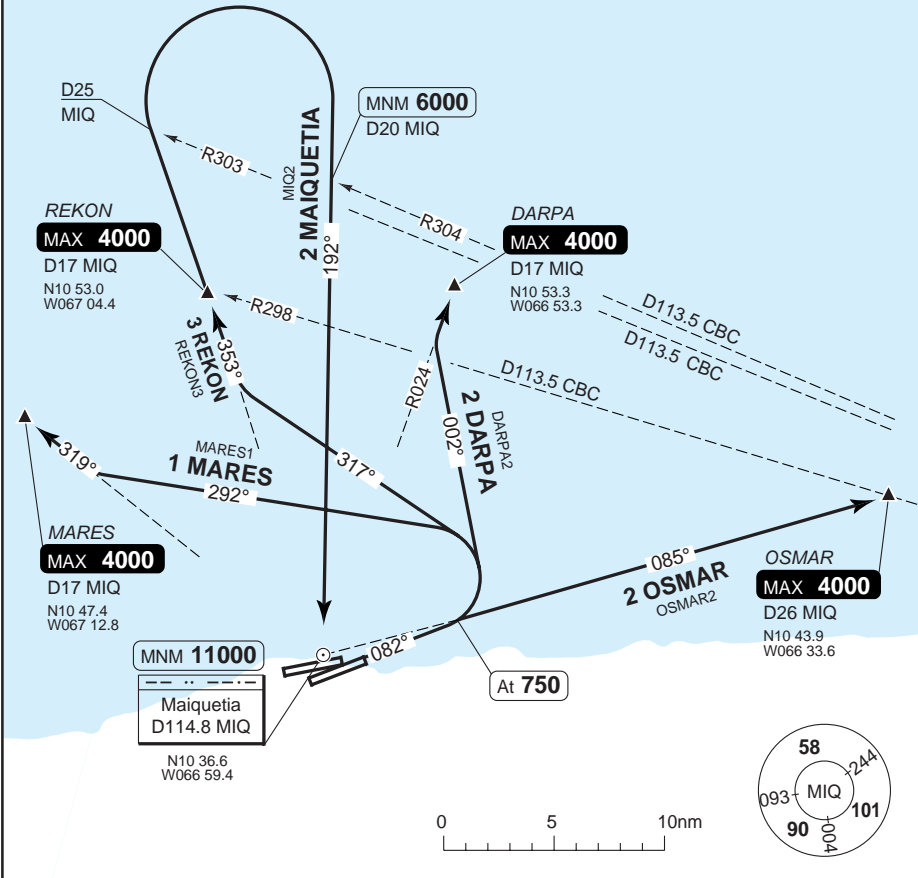
Reverse side blank

# SID RWY 09/10

## Simon Bolivar INTL MAIQUETIA

Maiquetia DLV / CLR <b>119.5</b>	GND <b>121.7</b> 121.9	TWR <b>118.1</b> 118.4	APP <b>120.1</b> 120.4	ATIS <b>114.8</b>
-------------------------------------	------------------------------	------------------------------	------------------------------	----------------------

TA **12000** | AD Elev **235**



30 - 1

**SPEED:** MAX 250kt below 10000ft within TMA.

**ALT RESTRICTION:** Climb to **4000**.  
2 MAIQUETIA: Climb to **11000**.

SID	Routeing	Altitudes
<b>(INITIAL CLIMB)</b> (Except 2 OSMAR)	Climb on 082° - at <b>750</b> turn left - follow SID.	
<b>2 DARPA</b>	HDG 002° - intcp R024 MIQ - DARPA.	DARPA MAX <b>4000</b>
<b>2 MAIQUETIA</b>	HDG 317° - intcp R353 MIQ - REKON - at D25 MIQ turn right to intcp R012 MIQ - MIQ.	REKON MAX <b>4000</b> D20 MIQ/R304 CBC MNM <b>6000</b> MIQ MNM <b>11000</b>
<b>1 MARES</b>	HDG 292° - intcp R319 MIQ - MARES.	MARES MAX <b>4000</b>
<b>2 OSMAR</b>	Climb on 082° - at <b>750</b> turn right - intcp R085 MIQ - OSMAR.	OSMAR MAX <b>4000</b>
<b>3 REKON</b>	HDG 317° - intcp R353 MIQ - REKON.	REKON MAX <b>4000</b>

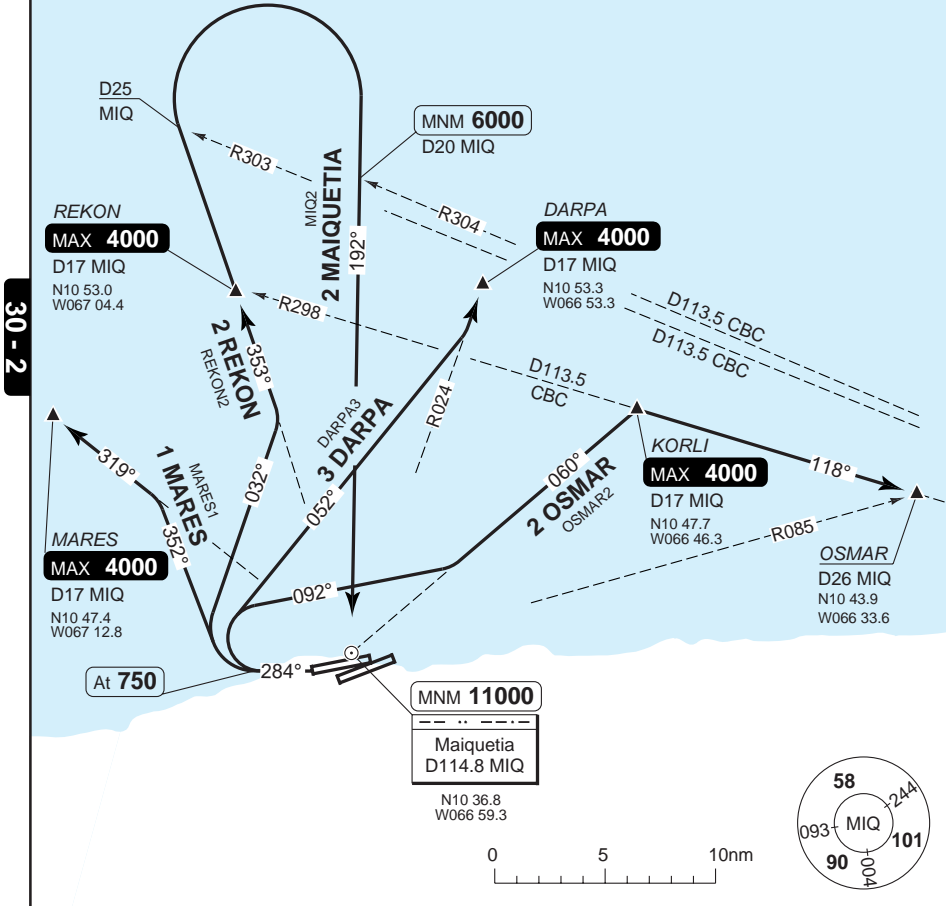
Change: New spec.

# SID RWY 28

## Simon Bolivar INTL MAIQUETIA

Maiquetia DLV / CLR <b>119.5</b>	GND <b>121.7</b>	TWR <b>118.1</b>	APP <b>120.1</b>	ATIS <b>114.8</b>
	<b>121.9</b>	<b>118.4</b>	<b>120.4</b>	

TA **12000** | AD Elev **235**



**SPEED:** MAX 250kt below 10000ft within TMA.

**ALT RESTRICTION:** Climb to **4000**.  
2 MAIQUETIA: Climb to **11000**.

SID	Routing	Altitudes
<b>(INITIAL CLIMB)</b>	Climb on 284° - at <b>750</b> turn right - follow SID.	
<b>3 DARPA</b>	HDG 052° - intcp R024 MIQ - DARPA.	DARPA MAX <b>4000</b>
<b>2 MAIQUETIA</b>	HDG 032° - intcp R353 MIQ - REKON - D25 MIQ turn right to intcp R012 MIQ - MIQ.	REKON MAX <b>4000</b> D20 MIQ/R304 CBC MNM <b>6000</b> MIQ MNM <b>11000</b>
<b>1 MARES</b>	HDG 352° - intcp R319 MIQ - MARES.	MARES MAX <b>4000</b>
<b>2 OSMAR</b>	HDG 092° - intcp R060 MIQ - KORLI - OSMAR.	KORLI MAX <b>4000</b>
<b>2 REKON</b>	HDG 032° - intcp R353 MIQ - REKON.	REKON MAX <b>4000</b>

© Navitech - svmi02daorg0

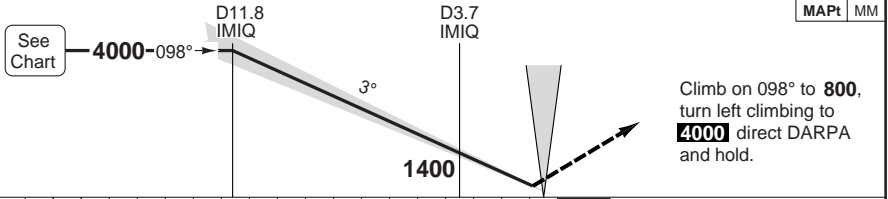
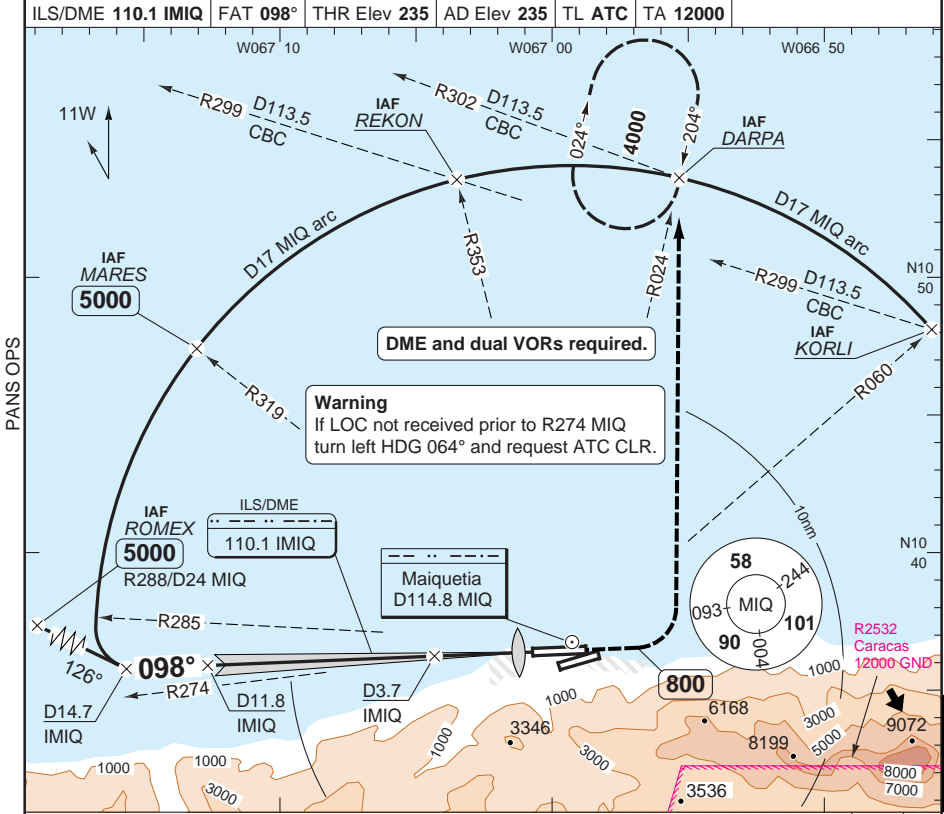
Change: New spec.

**THIS CHART IS A PART OF NAVIGRAPH NDAC AND IS INTENDED FOR FLIGHT SIMULATION USE ONLY**

# ILS RWY 10

# Simon Bolivar INTL MAIQUETIA

Maiquetia APP 120.1 120.4	TWR 118.1 118.4	GND 121.7 121.9	CLR / DLV 119.5	ATIS 114.8	
ILS/DME 110.1 IMIQ		FAT 098°	THR Elev 235	AD Elev 235	TL ATC TA 12000



nm 19 18 17 16 15 14 13 12 11 10 9 8 7 6 5 4 3 2 1 0			TCH 49
STATE	ACFT	<b>ILS+DME</b>	<b>Circling</b>
	A		<b>700</b> (465) 1.6km
	B	<b>470</b> (229)	<b>740</b> (500) 1.6km
	C	800m	<b>840</b> (600) 2.4km
D		<b>940</b> (700) 3.6km	
Note: Circling S of RWY 10/28 NA.			
			LDA 3500x45 11482x147ft P 3°
			FALS

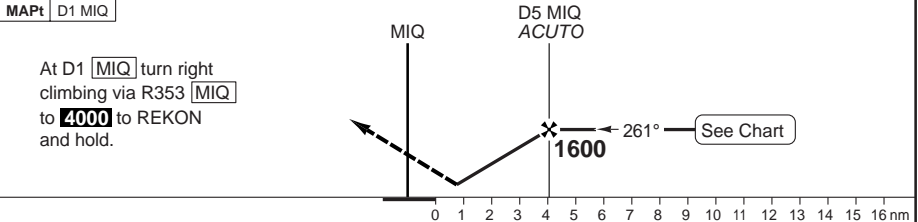
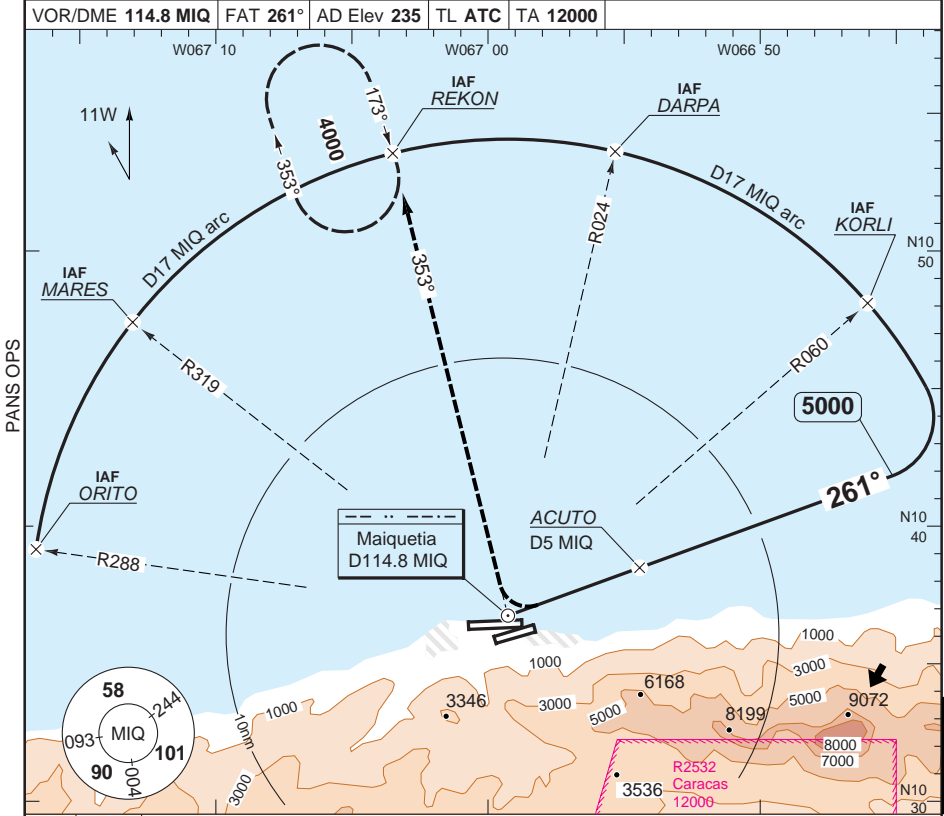


VOR 261 VOR/DME B

Simon Bolivar INTL MAIQUETIA

Maiquetia APP	TWR	GND	CLR / DLV	ATIS
120.1	118.1	121.7	119.5	114.8
120.4	118.4	121.9		

VOR/DME 114.8 MIQ	FAT 261°	AD Elev 235	TL ATC	TA 12000
-------------------	----------	-------------	--------	----------



MAPt D1 MIQ

Note: Circling S of RWY 10/28 NA.

ACFT	VOR+DME Circling
A	800 (565) 1.6km
B	840 (600) 2.4km
C	940 (700) 3.6km

© Navtech - svmi03aijp00

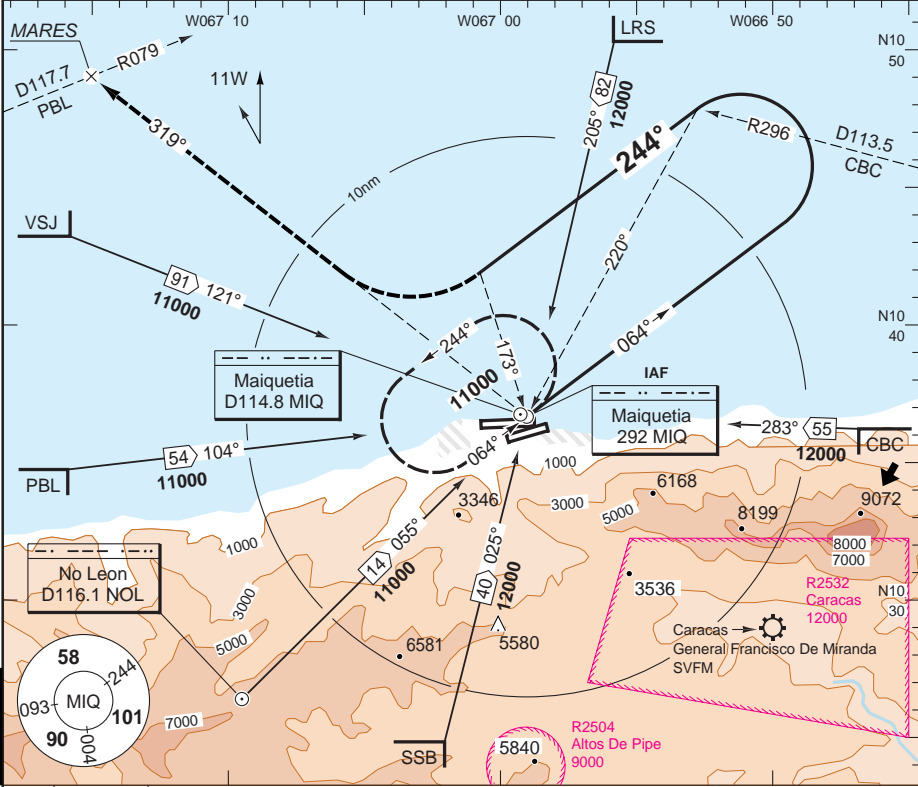
50 - 3

NDB 244 NDB C

Simon Bolivar INTL MAIQUETIA

Maiquetia APP	TWR	GND	CLR / DLV	ATIS
120.1	118.1	121.7	119.5	114.8
120.4	118.4	121.9		

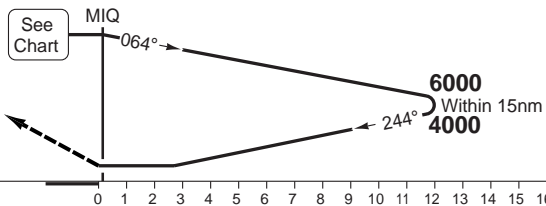
NDB 292 MIQ	FAT 244°	AD Elev 235	TL ATC	TA 12000
-------------	----------	-------------	--------	----------



50 - 4

MAPt 173° to MIQ

At 173° to 292 MIQ  
turn right climbing via  
319° from MIQ to  
4000 to MARES.



ACFT	NDB Circling
C	1000 (765) 2.4km
D	1000 (765) 3.6km

Note: Circling S of RWY 10/28 NA.

© Navtech - svmi04aip00  
EU OPS

Change: New spec.

**THIS CHART IS A PART OF NAVIGRAPH NDAC AND IS INTENDED FOR FLIGHT SIMULATION USE ONLY**

# JAR-OPS Landing Minima Simon Bolivar INTL MAIQUETIA

The following Minima is for Public Transport aircraft and conforms to JAR-OPS1 regulations.

STRAIGHT-IN APPROACH		C				D			
R/W	Procedure	DA/ MDA QNH ft	DH/ MDH QFE ft	VIS  m	VIS No ALS m	DA/ MDA QNH ft	DH/ MDH QFE ft	VIS  m	VIS No ALS m
10	ILS/DME (1)	<b>470</b>	230	800	1000	<b>470</b>	230	800	1000
10	VOR/DME	<b>800</b>	570	3200	3200	<b>800</b>	570	3200	3200

Notes:

(1) LOC N/A.

CIRCLING		C			D		
R/W	Procedure	MDA QNH ft	MDH QFE ft	Vis  m	MDA QNH ft	MDH QFE ft	Vis  m
	BCP VOR/DME-B (1)	<b>840</b>	600	2400	<b>940</b>	700	3600
	BCP NDB-C (1)	<b>1000</b>	770	2400	<b>1000</b>	770	3600
	10 ILS/DME (1)(2)	<b>840</b>	600	2400	<b>940</b>	700	3600
	10 VOR/DME (1)(2)	<b>840</b>	600	3200	<b>940</b>	700	3600

Notes:

(1) Prohibited South of Rwy 10/28.

(2) Landing on Rwy 09 is not authorised.

TAKE-OFF		C		D	
Runway	Facilities	RVR	Vis	RVR	Vis
09, 10/28 (3 + 4 engines)	-	-	800	-	800
09, 10/28 (1 + 2 engines)	-	-	1600	-	1600
27 (1)	-	-	-	-	-

Notes:

(1) Rwy 27 N/A for Take-Off.

## JAR-OPS Landing Minima

## Simon Bolivar INTL MAIQUETIA

The following Minima is for Public Transport aircraft and conforms to JAR-OPS1 regulations.

STRAIGHT-IN APPROACH		A				B			
R/W	Procedure	DA/ MDA QNH ft	DH/ MDH QFE ft	VIS  m	VIS No ALS m	DA/ MDA QNH ft	DH/ MDH QFE ft	VIS  m	VIS No ALS m
10	ILS/DME (1)	470	230	800	1000	470	230	800	1000
10	VOR/DME	800	570	3200	3200	800	570	3200	3200

Notes:

(1) LOC N/A.

CIRCLING		A			B		
R/W	Procedure	MDA QNH ft	MDH QFE ft	Vis  m	MDA QNH ft	MDH QFE ft	Vis  m
	BCP VOR/DME-B (1)	800	570	1600	800	570	1600
	BCP NDB-C (1)	N/A	N/A	N/A	N/A	N/A	N/A
	10 ILS/DME (1)(2)	700	470	1600	740	500	1600
	10 VOR/DME (1)(2)	800	570	3200	800	570	3200

Notes:

(1) Prohibited South of Rwy 10/28.

(2) Landing on Rwy 09 is not authorised.

TAKE-OFF		A		B	
Runway	Facilities	RVR	Vis	RVR	Vis
09, 10/28 (3 + 4 engines)	-	-	800	-	800
09, 10/28 (1 + 2 engines)	-	-	1600	-	1600
27 (1)	-	-	-	-	-

Notes:

(1) Rwy 27 N/A for Take-Off.