

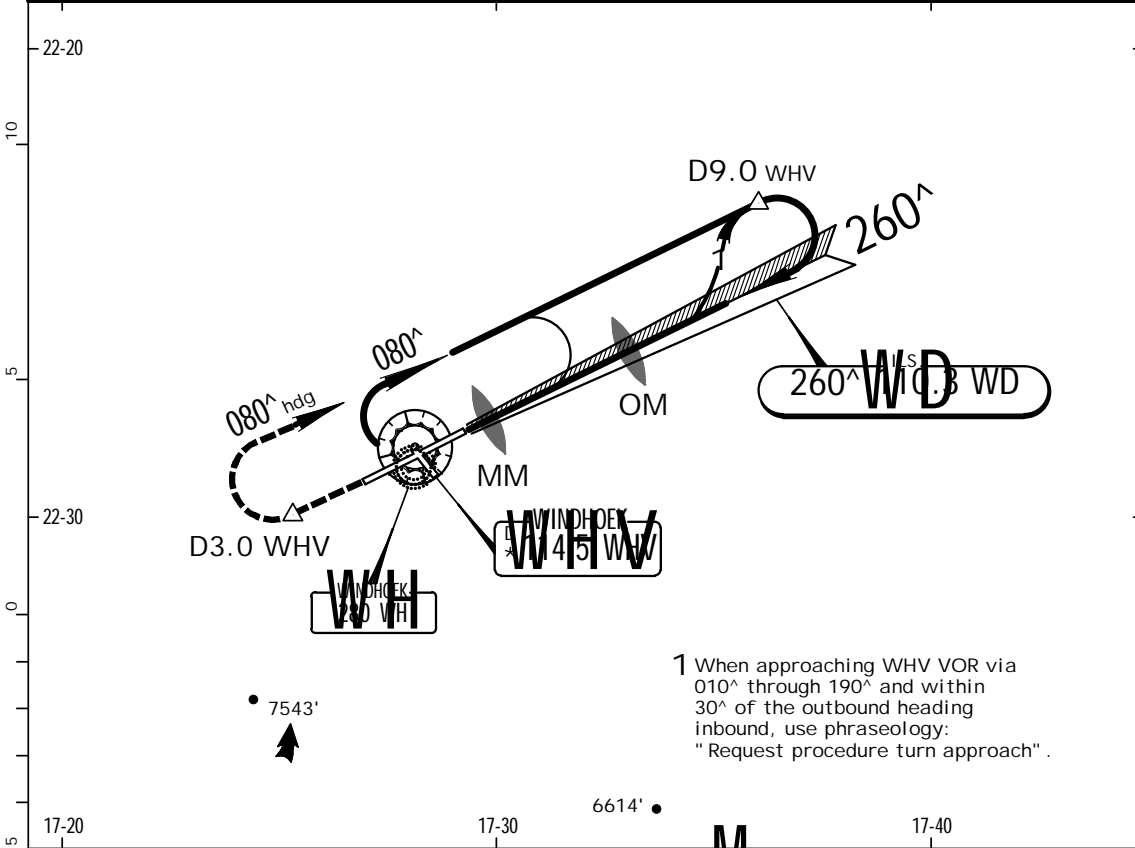
Notice: After 1/24/2002 0901Z this chart should not be used without first checking JeppView or NOTAMs.

FYWH
HOSEA KUTAKO INTL

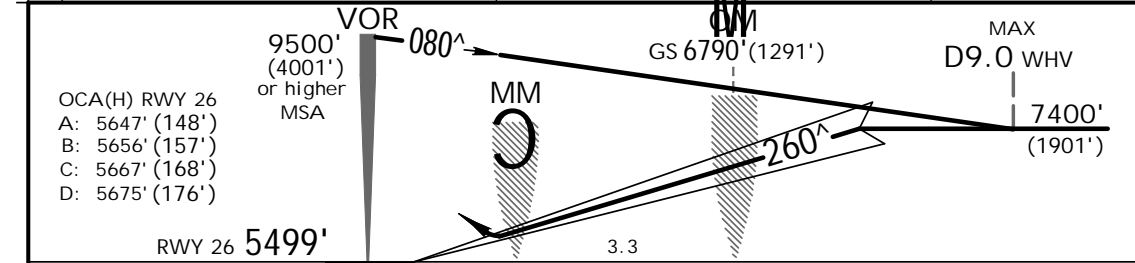
JEPPESEN
3 MAR 00 (11-1)

WINDHOEK, NAMIBIA
ILS Rwy 26

ATIS 114.5		*WINDHOEK Approach 120.5		*WINDHOEK Tower 118.1		Ground 121.9
LOC WD 110.3	Final Apch Crs 260 [^]	GS OM 6790' (1291')	ILS DA(H) 5699' (200')	Apt Elev 5640' RWY 5499'		
MISSED APCH: Climb on rwy heading to D3.0 WHV, then climbing turn RIGHT onto heading 080 [^] to 7400', at D9.0 WHV turn RIGHT to intercept LOC for another approach.						
Alt Set: hPa		Rwy Elev: 186 hPa	Trans level: By ATC		Trans alt: 10000' (4501')	MSA WHV VOR

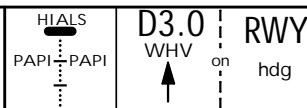


1 When approaching WHV VOR via 010[^] through 190[^] and within 30[^] of the outbound heading inbound, use phraseology: "Request procedure turn approach".



OCA(H) RWY 26
A: 5647' (148')
B: 5656' (157')
C: 5667' (168')
D: 5675' (176')

Gnd speed-Kts	70	90	100	120	140	160	
GS	3.00 [^]	377	485	539	647	755	862



JAR-OPS. STRAIGHT-IN LANDING RWY 26			CIRCLE-TO-LAND		
ILS		LOC (GS out)		Not authorized South of rwy 08/26 ENTIRELY AT PILOTS DISCRETION	
DA(H) 5699' (200')		ALS out		ALS out	
FULL		ALS out		ALS out	
A					
B					
C	RVR 550m	RVR 1000m	NOT APPLICABLE		
D					

PANS OPS

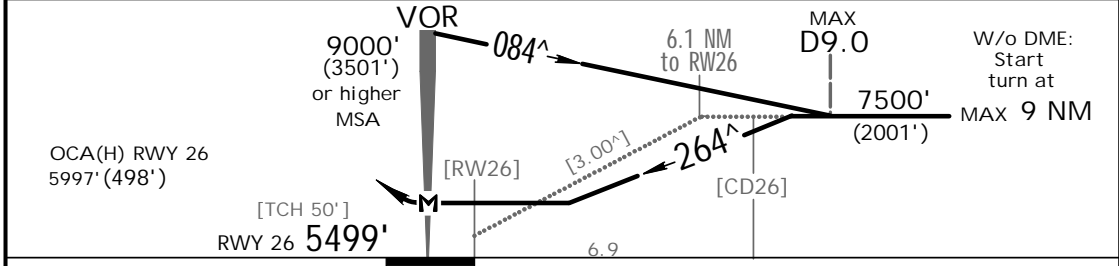
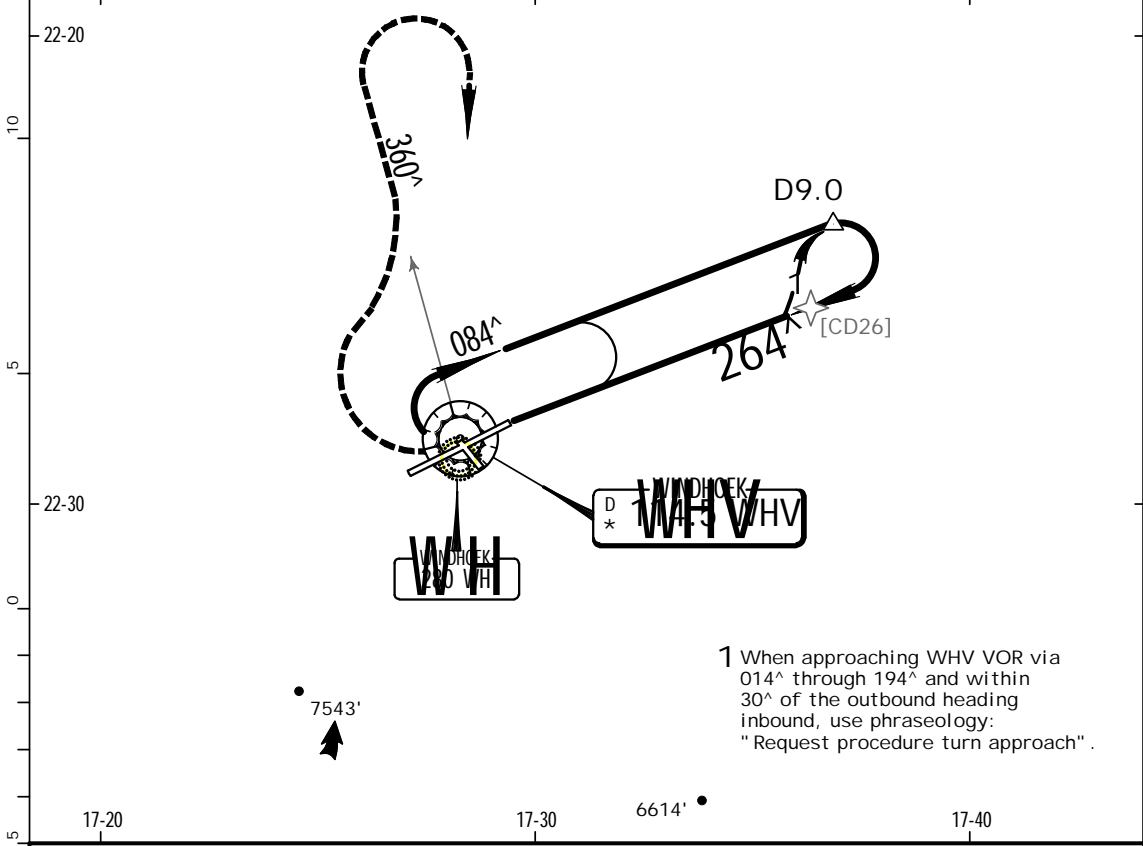
Notice: After 1/24/2002 0901Z this chart should not be used without first checking JeppView or NOTAMs.

FYWH
HOSEA KUTAKO INTL

JEPPESEN
3 MAR 00 (13-1)

WINDHOEK, NAMIBIA
VOR DME Rwy 26

ATIS 114.5		*WINDHOEK Approach 120.5		*WINDHOEK Tower 118.1		Ground 121.9
VOR WHV *114.5	Final Apch Crs 264 [^]	Minimum Alt No FAF	MDA(H) 6000' (501')	Apt Elev 5640' RWY 5499'		
MISSED APCH: Turn RIGHT climb outbound on R-360 to 7500', then turn RIGHT and return to VOR climbing to 9000'.						
Alt Set: hPa		Rwy Elev: 186 hPa	Trans level: By ATC		Trans alt: 10000' (4501')	MSA WHV VOR



Gnd speed-Kts	70	90	100	120	140	160	HI ALS PAPI PAPI 7500' on 114.5 RT R-360
Descent angle [3.00 [^]]	372	478	531	637	743	849	
MAP at VOR							

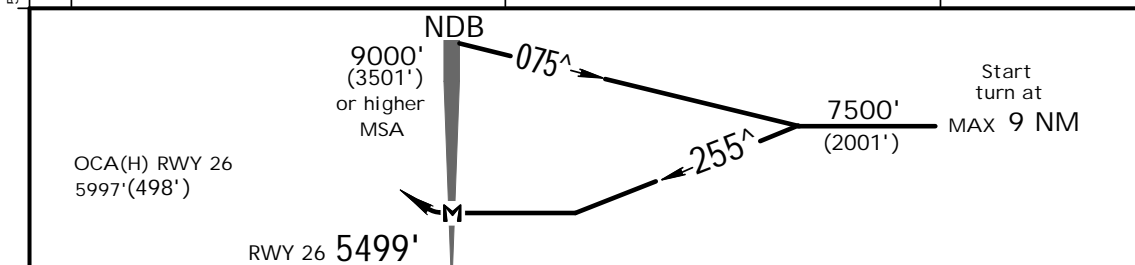
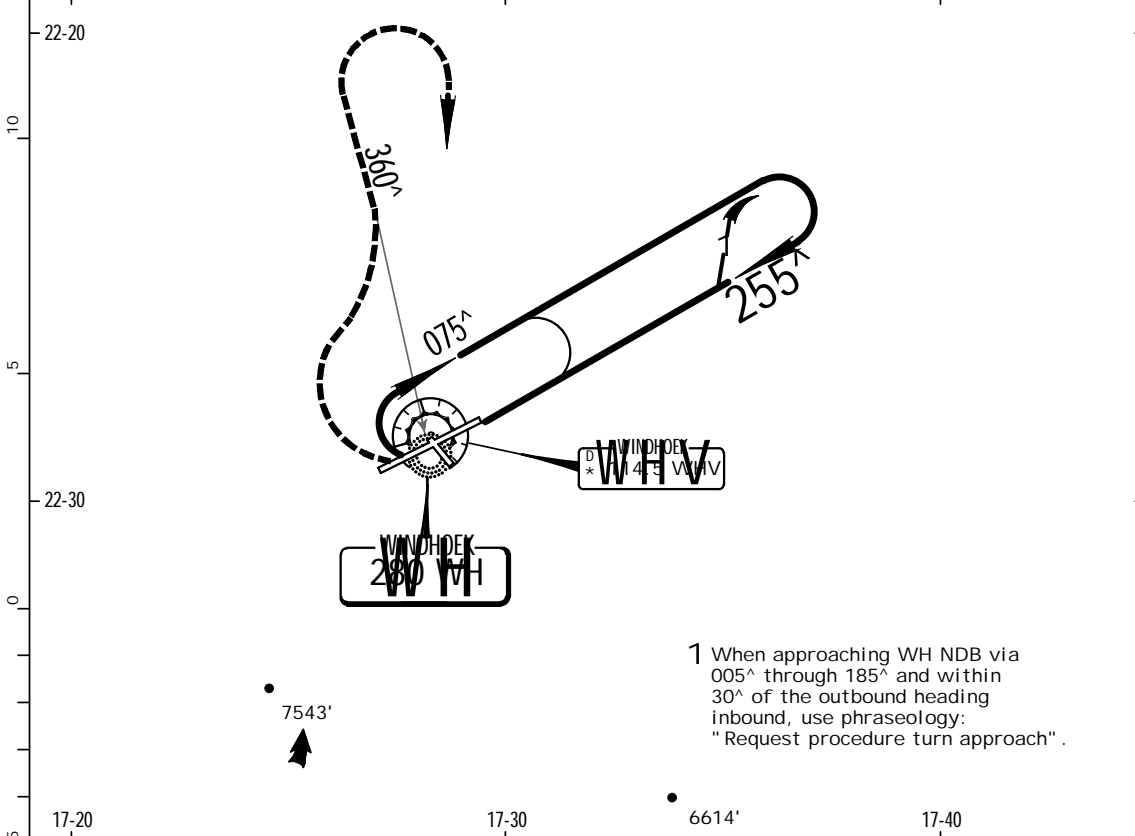
PANS OPS	JAR-OPS. STRAIGHT-IN LANDING RWY 26		CIRCLE-TO-LAND	
	MDA(H) 6000' (501')		Not authorized South of rwy 08/26	
	ALS out		ENTIRELY AT PILOTS DISCRETION	
	A	RVR 1000m	RVR 1500m	
B	RVR 1200m	RVR 2000m		
C	RVR 1600m			
D	RVR 1600m			

FYWH
HOSEA KUTAKO INTL

JEPPESEN
3 MAR 00 (16-1)

WINDHOEK, NAMIBIA
NDB Rwy 26

ATIS 114.5		*WINDHOEK Approach 120.5		*WINDHOEK Tower 118.1		Ground 121.9
NDB WH 280	Final Apch Crs 255 [^]	Minimum Alt No FAF	MDA(H) 6000' (501')	Apt Elev 5640'	RWY 5499'	
MISSED APCH: Turn RIGHT climb on 360 [^] from NDB to 7500', then turn RIGHT and return to NDB climbing to 9000'.						
Alt Set: hPa	Rwy Elev: 186 hPa	Trans level: By ATC	Trans alt: 10000' (4501')	MSA WH NDB		



MAP at NDB	
------------	--

JAR-OPS. STRAIGHT-IN LANDING RWY 26		CIRCLE-TO-LAND	
MDA(H) 6000' (501')		Not authorized South of rwy 08/26	
ALS out		ENTIRELY AT PILOTS DISCRETION	
A	RVR 1000m	RVR 1500m	
B	RVR 1200m	RVR 2000m	
C	RVR 1600m		
D	RVR 1600m		

Notice: After 1/24/2002 0901Z this chart should not be used without first checking JeppView or NOTAMs.

FYWH

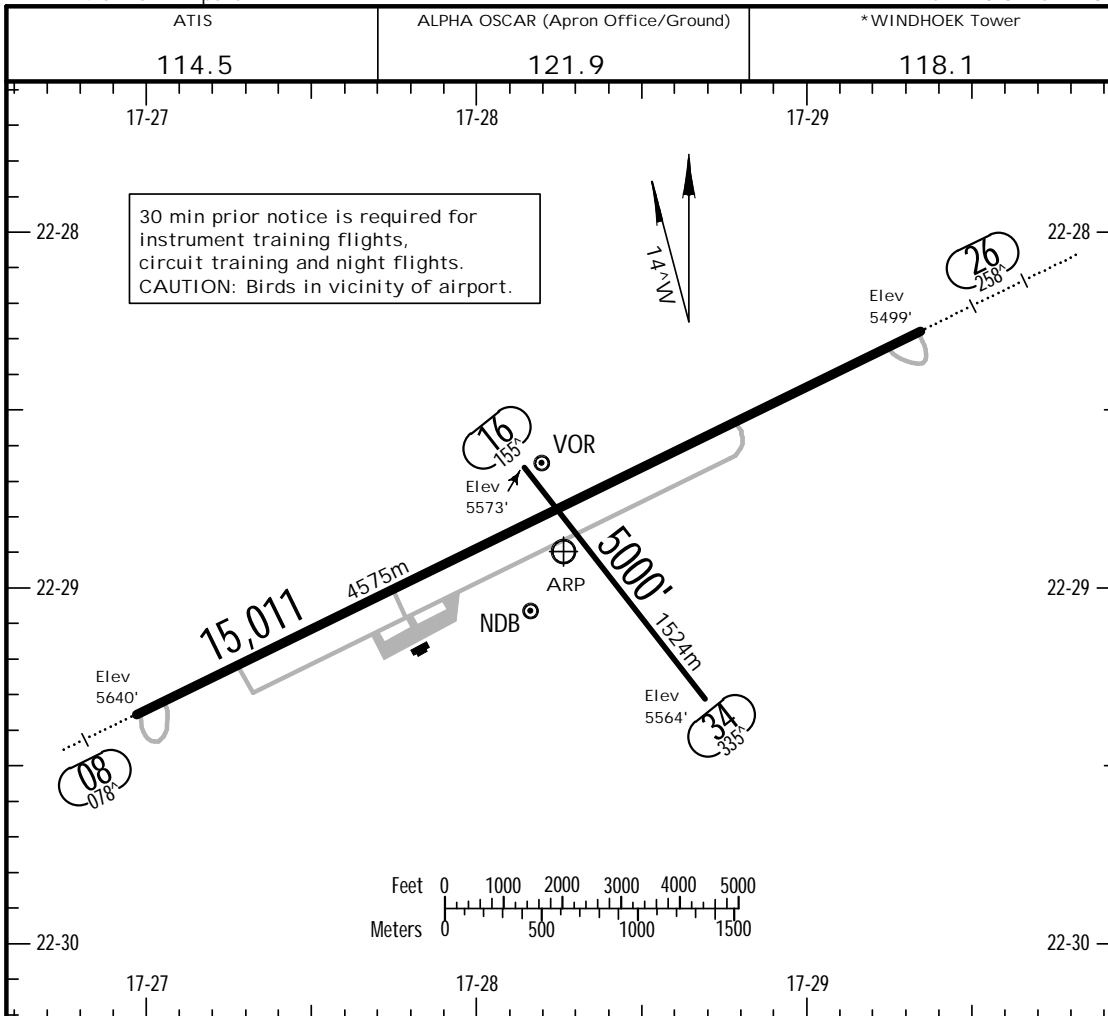
Apt Elev **5640'**
WHV 114.5 - On Airport

JEPPESEN

3 MAR 00 **(11-1)**

WINDHOEK, NAMIBIA

HOSEA KUTAKO INTL
S22 28.8 E017 28.3



RWY	ADDITIONAL RUNWAY INFORMATION		USABLE LENGTHS		WIDTH
	Threshold	LANDING BEYOND	Glide Slope	TAKE-OFF	
08 26	HIRL(60m)	HIALS PAPI (angle 3.0°)	14039'	4279m	148' 45m
16 34	HIRL(50m)	HIRL(50m) PAPI (angle 3.0°)			100' 30m

JAR-OPS.		TAKE-OFF 1	
LVP must be in Force		All Rwys	
	RCLM (DAY only) or RL	RCLM (DAY only) or RL	NIL (DAY only)
A			
B	250m	400m	500m
C			
D	300m		

1 Operators applying U.S. Ops Specs: CL required below 300m.