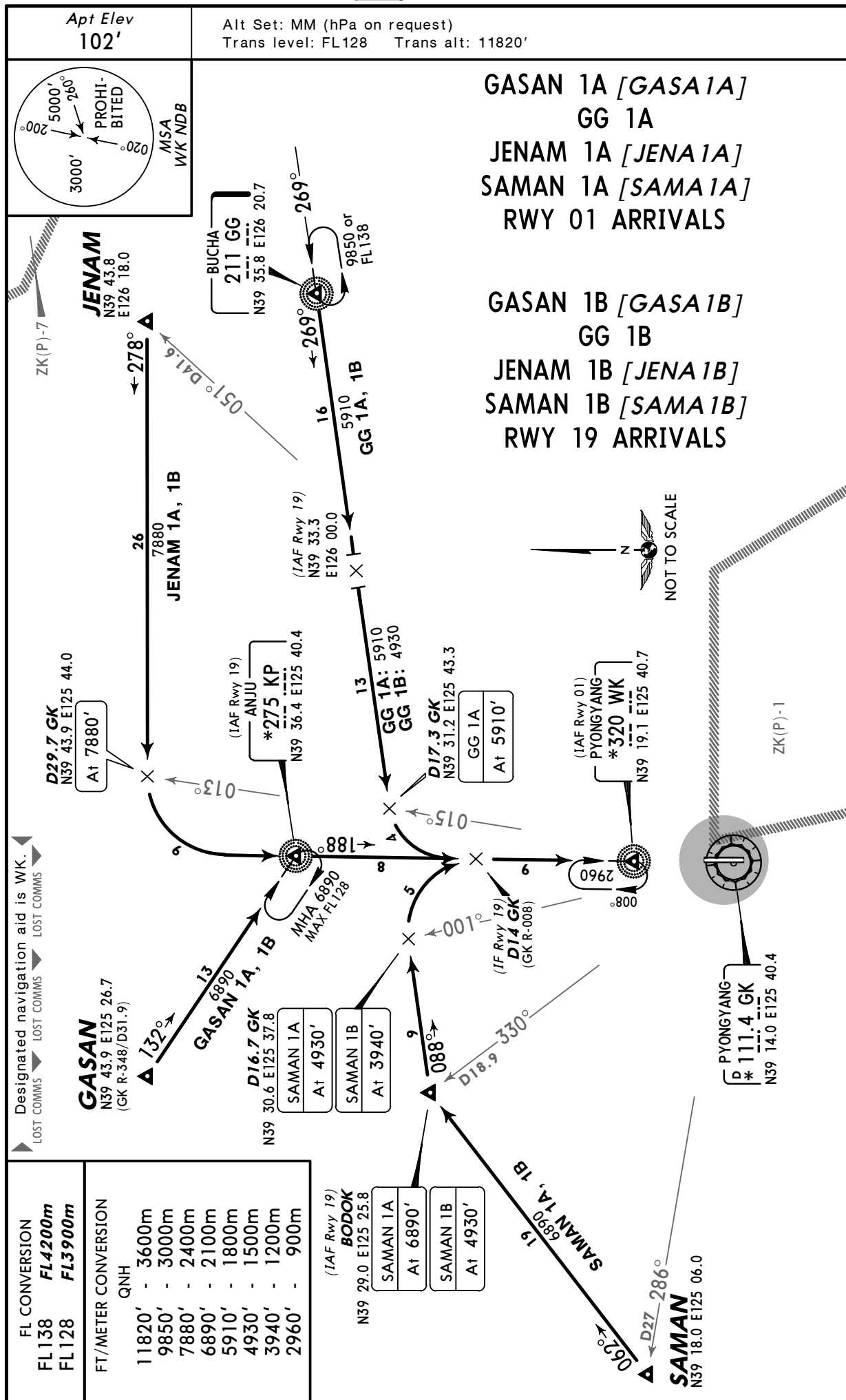


ZKPY/FNJ
SUNAN

JEPPESEN PYONGYANG, DPR OF KOREA

3 SEP 04 10-2

STAR

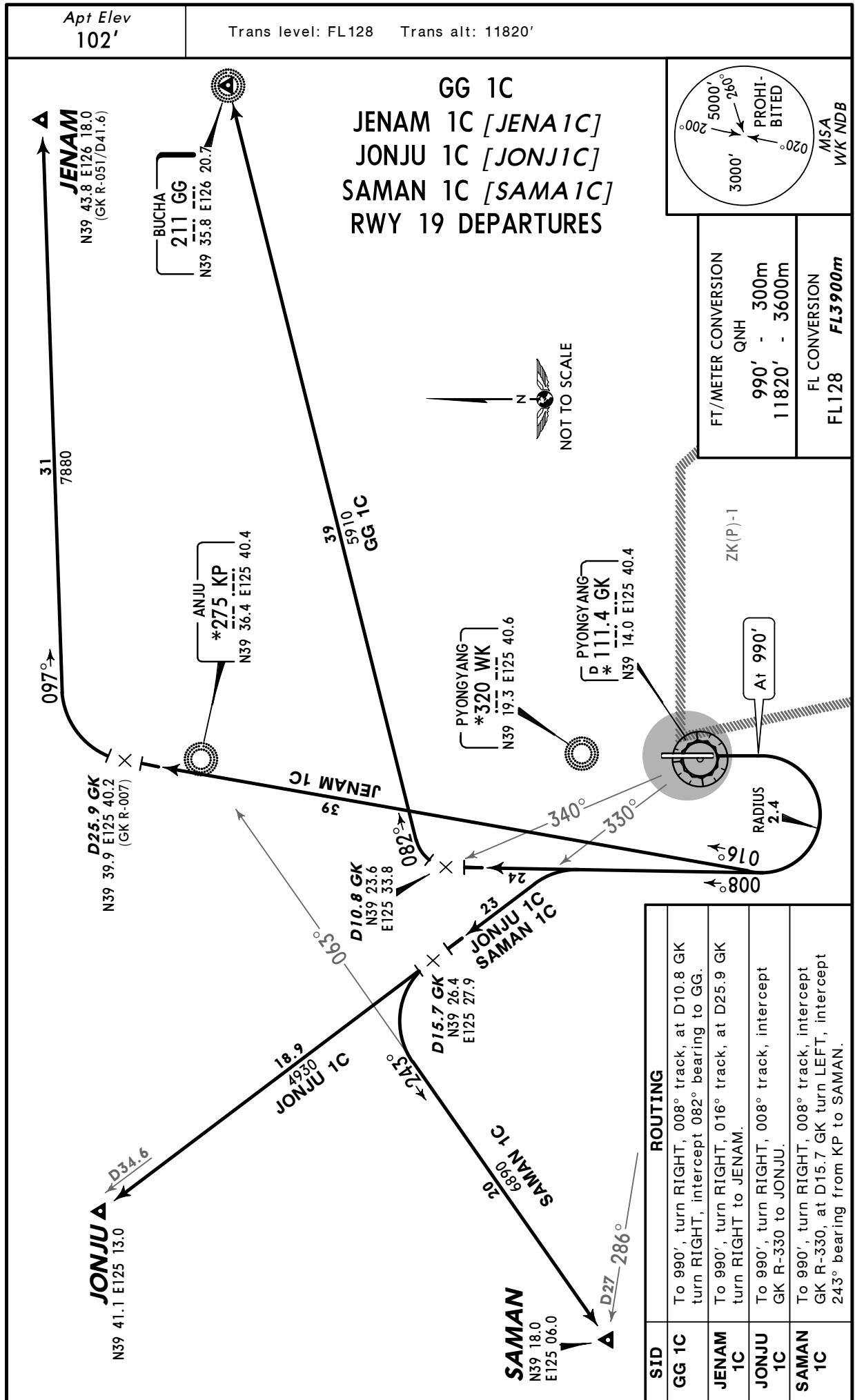


ZKPY/FNJ
 SUNAN

JEPPESEN PYONGYANG, DPR OF KOREA

18 FEB 05 10-3

SID

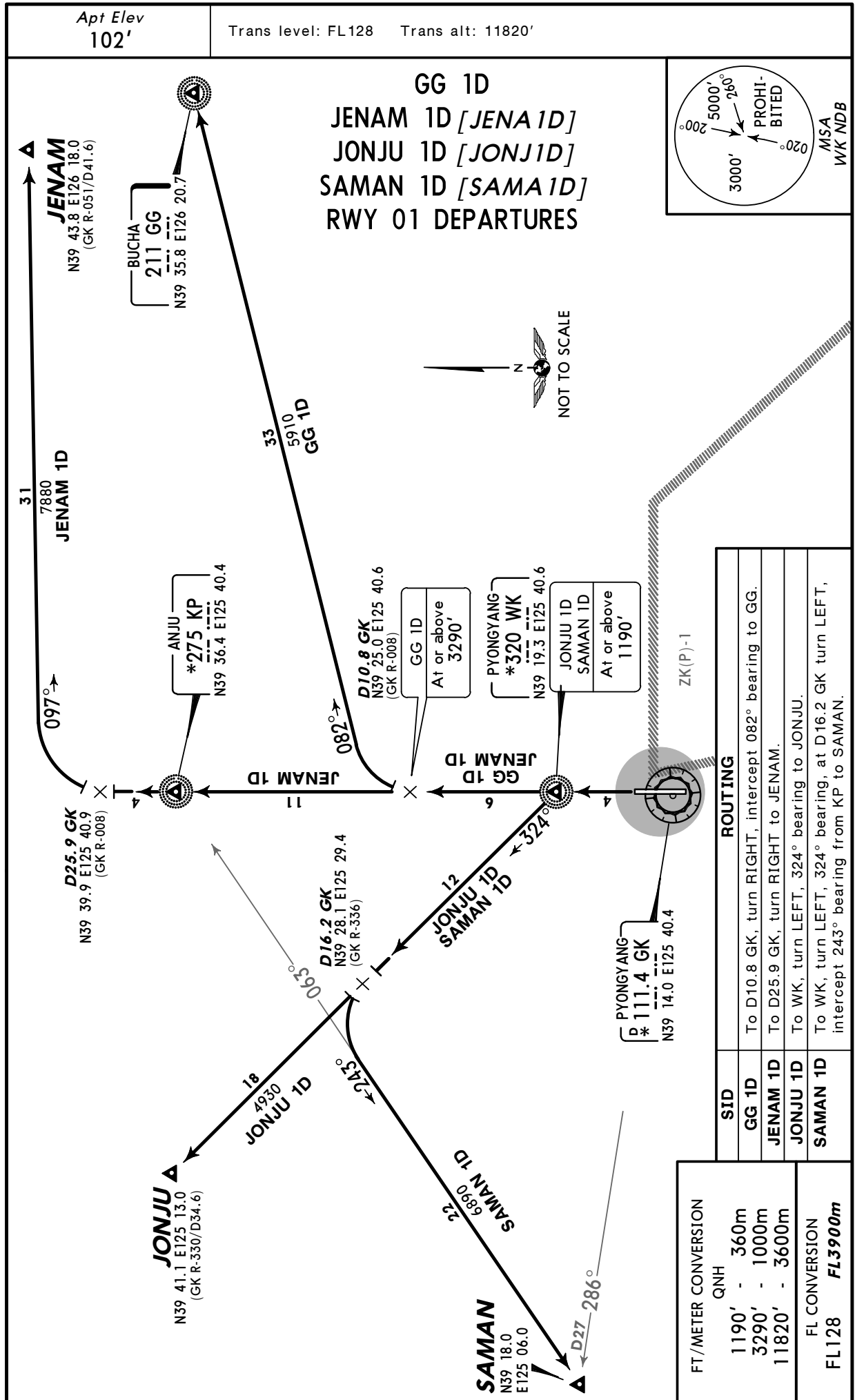


ZKPY/FNJ
 SUNAN

JEPPESEN PYONGYANG, DPR OF KOREA

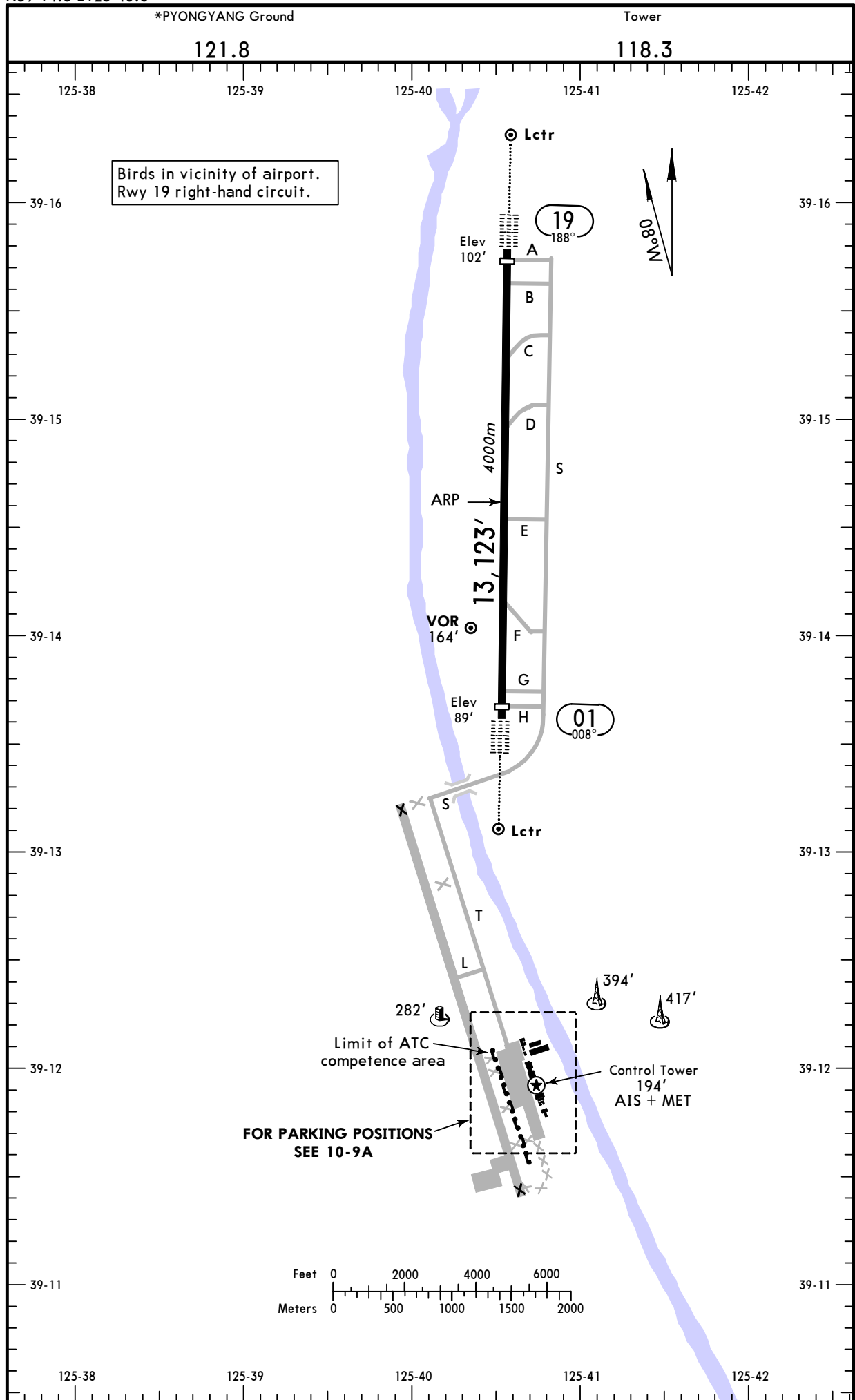
18 FEB 05 (10-3A)

SID



ZKPY/FNJ
Apt Elev 102'
N39 14.6 E125 40.6

JEPPESEN PYONGYANG, DPR OF KOREA
30 SEP 05 (10-9)
SUNAN

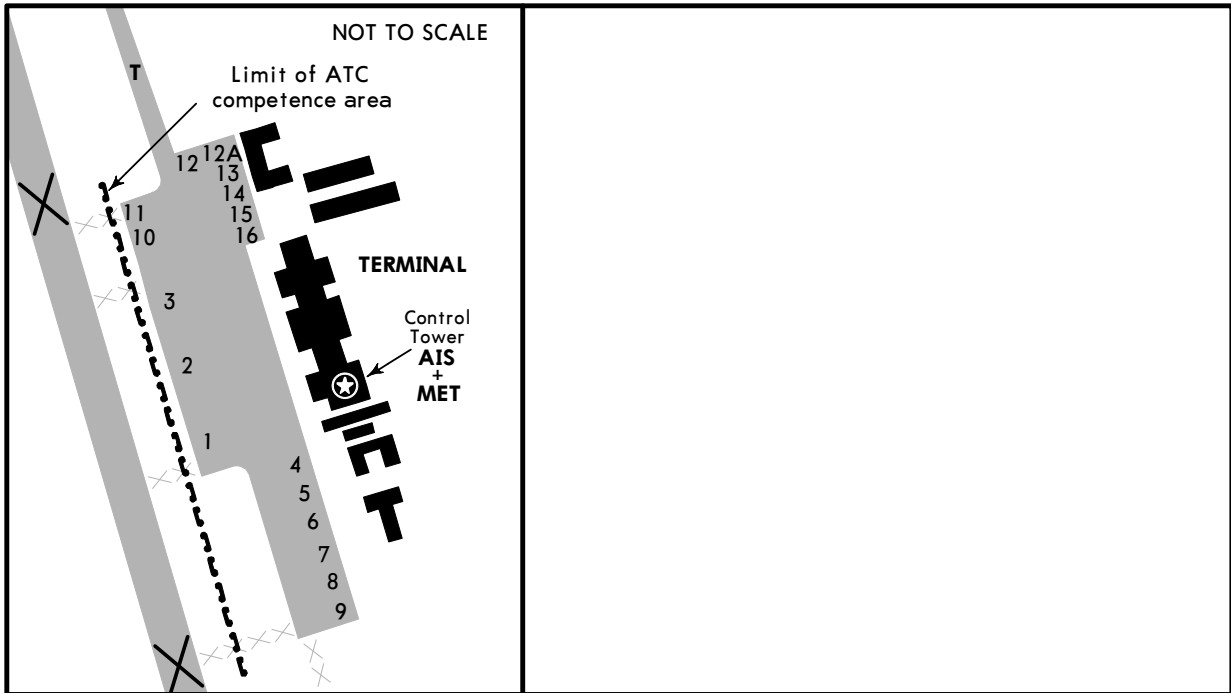


ZKPY/FNJ

JEPPESEN PYONGYANG, DPR OF KOREA

30 SEP 05 (10-9A)

SUNAN



ADDITIONAL RUNWAY INFORMATION

RWY		USABLE LENGTHS		TAKE-OFF	WIDTH
		Threshold	Landing Beyond Glide Slope		
01	① HIALS-II TDZ REIL PAPI(2.83°) HST-C&D RVR	12,795' 3900m	11,975' 3650m		197' 60m
19	① HIALS-II TDZ REIL PAPI(3.00°) HST-F RVR				

① MIRL (60m) CL (White, 15m)

TAKE-OFF

AIR CARRIER (JAA)
All Rwys

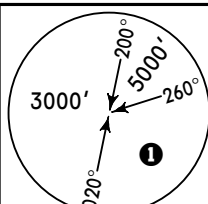
LVP must be in force

	RL & CL	RCLM (DAY only) or RL	RCLM (DAY only) or RL
A	200m	250m	400m
B			
C			
D	250m	300m	

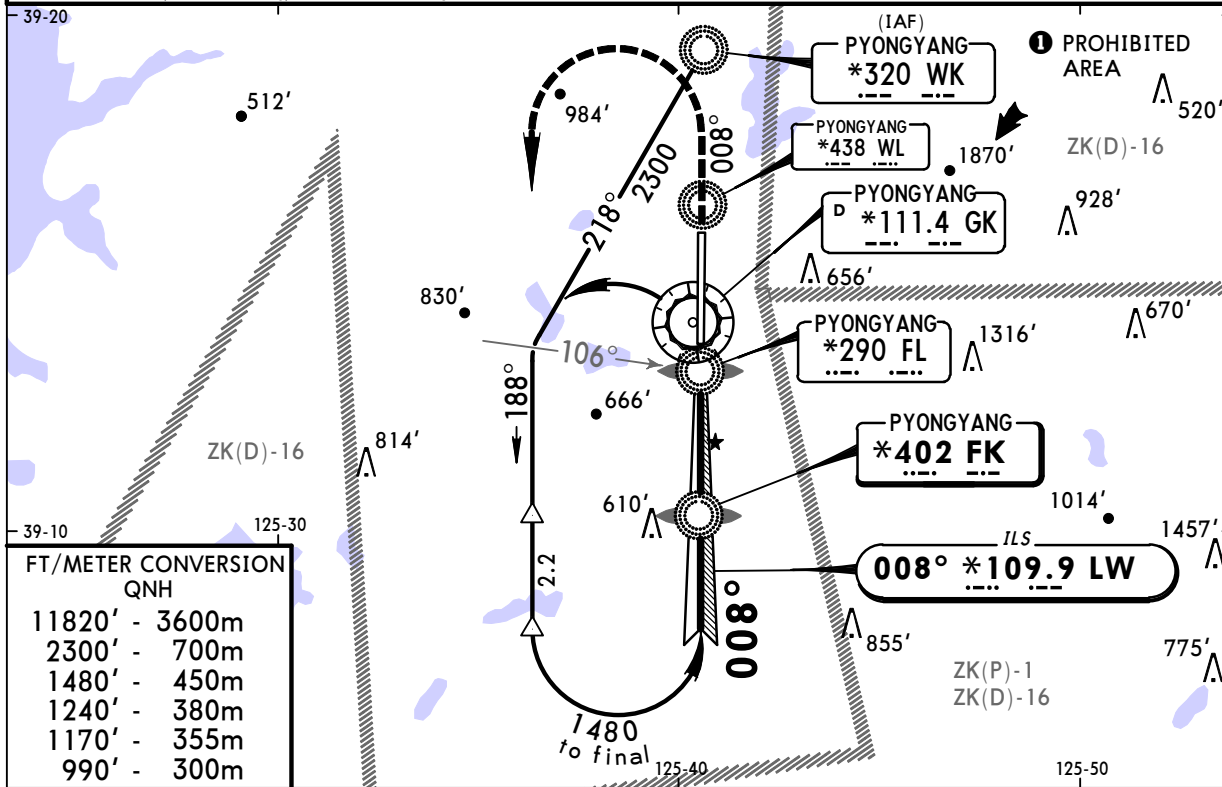
ZKPY/FNJ
SUNAN

JEPPESEN PYONGYANG, DPR OF KOREA
1 SEP 06 (11-1)
ILS or NDB Rwy 01

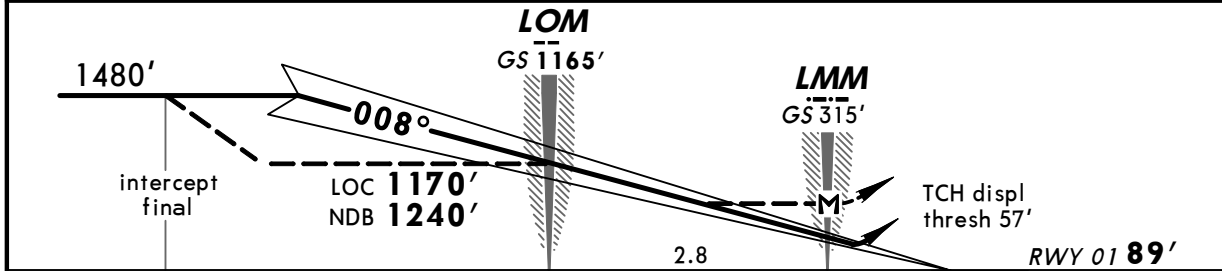
BRIEFING STRIP™

PYONGYANG Approach 130.0		PYONGYANG Tower 118.3		*Ground 121.8
LOC LW *109.9	Final Apch Crs 008°	GS LOM 1165' (1076')	ILS DA(H) 289' (200')	Apt Elev 102'
NDB FK *402		Minimum Alt LOM 1240' (1151')	NDB MDA(H) 680' (591')	RWY 89'
MISSED APCH: Climb on 008° to 990', then climbing turn LEFT to 2300' and contact ATC.				 MSA WK NDB

Alt Set: MM (hPa on req) Rwy Elev: 3 hPa Trans level: FL 128 Trans alt: 11820'



NDB	GK DME	4.5	4.3	3.8	3.2	2.7	2.2	1.6	1.1
	ALTITUDE	1480'	1420'	1250'	1080'	900'	730'	560'	390'



TO DISPLACED THRESHOLD							3.4	2.8	0.6	0	RWY 01 89'
Gnd speed-Kts	70	90	100	120	140	160	HIALS-II		990'	2300'	
ILS GS 2.83° or LOC Descent Gradient 5.0%	356	458	509	611	712	814	REIL	PAPI	on 008°	LT	
NDB Descent Gradient 5.2%	369	474	527	632	737	843	PAPI				
MAP at LMM											

STRAIGHT-IN LANDING RWY 01							CIRCLE-TO-LAND 1 Prohibited East of rwy 01			
ILS DA(H) 289' (200')			LOC (GS out) MDA(H) 490' (401')			NDB MDA(H) 680' (591')		Max Kts		
FULL	TDZ or CL out	ALS out	LMM out	ALS out		ALS out		100	970'(881')	2000m
A			RVR 720m VIS 800m	NOT AUTH	RVR 1500m VIS 1600m	1200m	RVR 1500m VIS 1600m	135		
B								180		
C	RVR 550m VIS 800m	RVR 720m VIS 800m	1200m		2000m		RVR 1500m VIS 1600m	2400m		
D							2400m	2800m	205	1070'(981') 4800m

PANS OPS

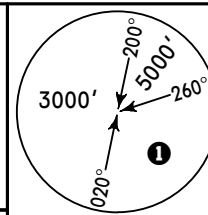
1 Circling height based on rwy 01 displaced threshold elev of 89'.

ZKPY/FNJ
SUNAN

JEPPESEN PYONGYANG, DPR OF KOREA
1 SEP 06 (11-2)
ILS or NDB Rwy 19

BRIEFING STRIP™

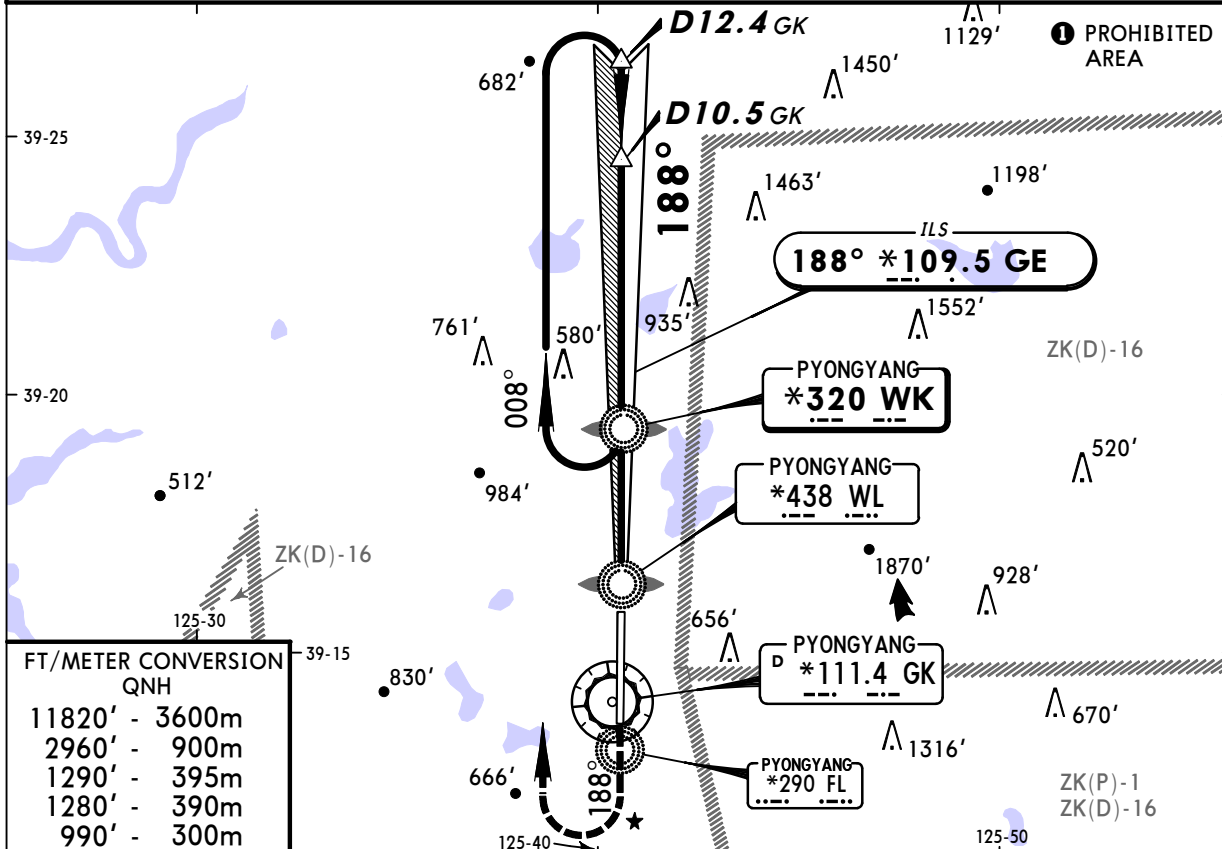
PYONGYANG Approach 130.0		PYONGYANG Tower 118.3		*Ground 121.8
LOC GE *109.5	Final Apch Crs 188°	GS LOM 1276' (1174')	ILS DA(H) 302' (200')	Apt Elev 102'
NDB WK *320		Minimum Alt LOM 1290' (1188')	NDB MDA(H) 830' (728')	RWY 102'



MISSED APCH: Climb on 188° to 990', then climbing turn RIGHT to 2960' and contact ATC.

MSA
WK NDB

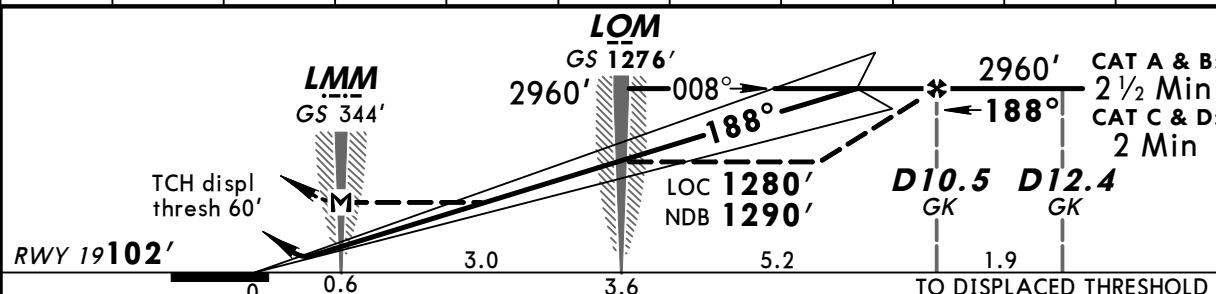
Alt Set: MM (hPa on req) Rwy Elev: 4 hPa Trans level: FL 128 Trans alt: 11820'



FT/METER CONVERSION
QNH

11820'	-	3600m
2960'	-	900m
1290'	-	395m
1280'	-	390m
990'	-	300m

NDB	GK DME	2.7	3.2	3.8	4.3	4.9	5.4	6.5	7.6	8.6
	ALTITUDE	460'	640'	810'	990'	1150'	1330'	1670'	2020'	2360'



Gnd speed-Kts	70	90	100	120	140	160	HIALS-II REIL PAPI	990'	on 188°	2960'
ILS GS 3.00° or LOC or NDB Descent Gradient 5.2%	377	485	539	647	755	862				
MAP at LMM										RT

PANS OPS

STRAIGHT-IN LANDING RWY 19						CIRCLE-TO-LAND Prohibited East of rwy 19			
ILS DA(H) 302' (200')			LOC (GS out) MDA(H) 500' (398')			NDB MDA(H) 830' (728')			
FULL	TDZ or CL out	ALS out	LMM out	ALS out		ALS out	Max Kts	MDA(H)	
A							100	1390' (1288')	2000m
B	RVR 550m VIS 800m	RVR 720m VIS 800m	RVR 720m VIS 800m	NOT AUTH	RVR 1500m VIS 1600m	1200m	135	1390' (1288')	2400m
C						2400m	180	1480' (1378') 4800m	
D			1200m		2000m	3200m	205		