

General Information

Location: Bali Idn
IATA Code: DPS
Lat/Long: S08° 44.8' E115° 10.1'
Elevation: 14 ft

Airport Use: Public
Magnetic Variation: 1.5°E

Fuel Types: 73 Octane, 100-130 Octane, Jet A-1
Repair Types: Major Airframe, Major Engine
Customs: Yes
Airport Type: IFR
Landing Fee: No
Control Tower: Yes
Jet Start Unit: No
LLWS Alert: No
Beacon: Yes

Sunrise: 2226 Z
Sunset: 1006 Z,

Runway Information

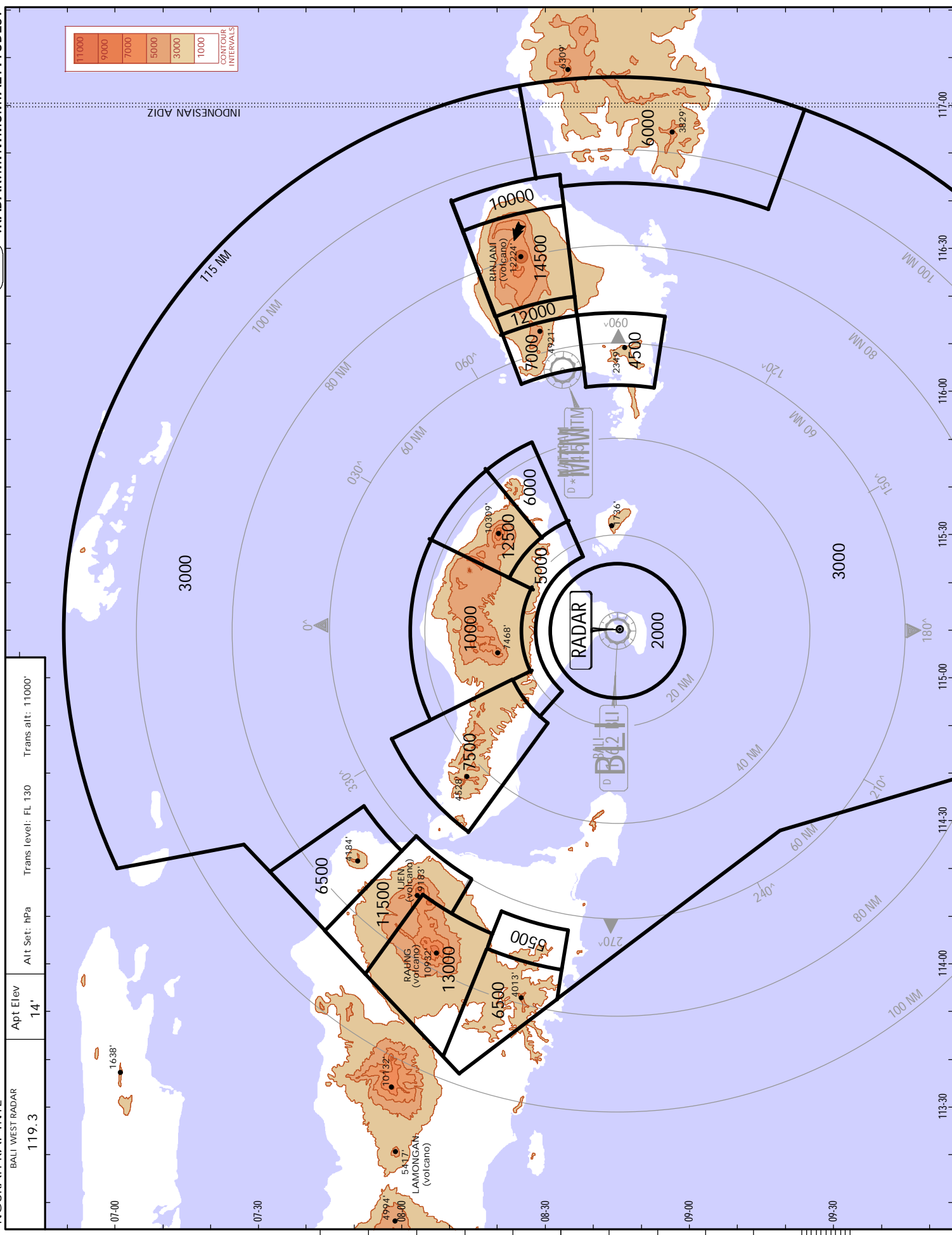
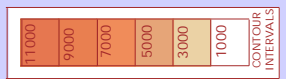
Runway: 09
Length x Width: 9843 ft x 148 ft
Surface Type: asphalt
TDZ-Elev: 11 ft
Lighting: Edge, REIL

Runway: 27
Length x Width: 9843 ft x 148 ft
Surface Type: asphalt
TDZ-Elev: 12 ft
Lighting: Edge, ALS, REIL

Communication Information

ATIS 126.2
Ngurah Tower 118.5
Ngurah Tower 118.1
Ngurah Ground Control 118.9
Bali West Radar ARSA 119.3
Bali East Radar ARSA 119.9
Ngurah Rai Intl Director (Approach Control Radar) 119.7

BALI WEST RADAR 119.3	Apt Elev 14'	Alt Set: hPa	Trans level: FL 130	Trans alt: 11000'
--------------------------	-----------------	--------------	---------------------	-------------------



RWY 09 ARRIVALS

For Procedure Graphic see 10-2
PROCEDURE TEXT

STAR	ROUTING
ANGSA ONE ALPHA [ANGS1A]	From W-33 after ANGSA proceed to MONDE on track 265 [^] , descend to 7000', then proceed to KUTA on track 339 [^] , descend to 3000' or as instructed by ATC.
BADAK ONE ALPHA [BADA1A]	From W-46 after BADAK proceed to BUYAN on track 207 [^] , descend to 10000', then proceed to KUTA on track 165 [^] , descend to 3000', cross BLI 25 DME at or above 8000' or as instructed by ATC.
ENTAS TWO ALPHA [ENTA2A]	From W-45 after ENTAS proceed to TALOT on track 163 [^] , descend to FL 115 until BLI 58 DME, cross TALOT at or above 7000', then proceed to KUTA on track 085 [^] , descend to 3000' or as instructed by ATC.
GAGAK ONE ALPHA [GAGA1A]	From M-635 after GAGAK proceed to MONDE on track 303 [^] , descend to 7000', then proceed to KUTA on track 339 [^] , descend to 3000' or as instructed by ATC.
GAJAH ONE ALPHA [GAJA1A]	From G-578 after GAJAH proceed to BUYAN on track 218 [^] , descend to 10000', then proceed to KUTA on track 165 [^] , descend to 3000', cross BLI 25 DME at or above 8000' or as instructed by ATC.
GALKO TWO ALPHA [GALK2A]	From M-522 after GALKO proceed to BUYAN on track 189 [^] , descend to 10000', then proceed to KUTA on track 165 [^] , descend to 3000', cross BLI 25 DME at or above 8000' or as instructed by ATC.
JALAK ONE ALPHA [JALA1A]	From R-592 after JALAK proceed to MONDE on track 357 [^] , descend to 7000', then proceed to KUTA on track 339 [^] , descend to 3000' or as instructed by ATC.
LOMBO TWO ALPHA [LOMB2A]	From MTM after LOMBO proceed to MONDE on track 233 [^] , then proceed to KUTA on track 339 [^] , descend to 3000' or as instructed by ATC.
MALEO ONE ALPHA [MALE1A]	From B-349 after MALEO proceed to MONDE on track 320 [^] , descend to 7000', then proceed to KUTA on track 339 [^] , descend to 3000' or as instructed by ATC.
MURAI ONE ALPHA [MURA1A]	From G-578 after MURAI proceed to MONDE on track 336 [^] , descend to 7000', then proceed to KUTA on track 339 [^] , descend to 3000' or as instructed by ATC.
PANDA ONE ALPHA [PAND1A]	From W-44 after PANDA proceed to BUYAN on track 261 [^] , descend to FL 130, cross BLI R-359, descend to 10000', then proceed to KUTA on track 165 [^] , descend to 3000', cross BLI 25 DME at or above 8000' or as instructed by ATC.
PEDET ONE ALPHA [PEDE1A]	From W-41 after PEDET proceed to BUYAN on track 244 [^] , descend to FL 130, cross BLI R-359, descend to 10000', then proceed to KUTA on track 165 [^] , descend to 3000', cross BLI 25 DME at or above 8000' or as instructed by ATC.
PENYU ONE ALPHA [PENY1A]	From W-42 after PENYU proceed to MONDE on track 249 [^] , descend to 7000', then proceed to KUTA on track 339 [^] , descend to 3000' or as instructed by ATC.
RABOL TWO ALPHA [RABO2A]	From M-766/W-33 after RABOL proceed to TALOT on track 132 [^] , descend to FL 130 until BLI 58 DME, cross TALOT at or above 7000', then proceed to KUTA on track 085 [^] , descend to 3000' or as instructed by ATC.
SRITI ONE ALPHA [SRIT1A]	From G-326 after SRITI proceed to MONDE on track 285 [^] , descend to 7000', then proceed to KUTA on track 339 [^] , descend to 3000' or as instructed by ATC.
TIRAS TWO ALPHA [TIRA2A]	From G-464 after TIRAS proceed to BUYAN on track 156 [^] , descend to 8000', then proceed to KUTA on track 165 [^] , at BLI 25 DME descend to 3000' or as instructed by ATC.
UDANG ONE ALPHA [UDAN1A]	From W-13 after UDANG proceed to TALOT on track 150 [^] , descend to FL 130 until BLI 58 DME, cross TALOT at or above 7000', then proceed to KUTA on track 085 [^] , descend to 3000' or as instructed by ATC.
WALET ONE ALPHA [WALE1A]	From M-766 after WALET proceed to MONDE on track 270 [^] , descend to 7000', then proceed to KUTA on track 339 [^] , descend to 3000' or as instructed by ATC.

RWY 27 ARRIVALS

For Procedure Graphic see 10-2A
PROCEDURE TEXT

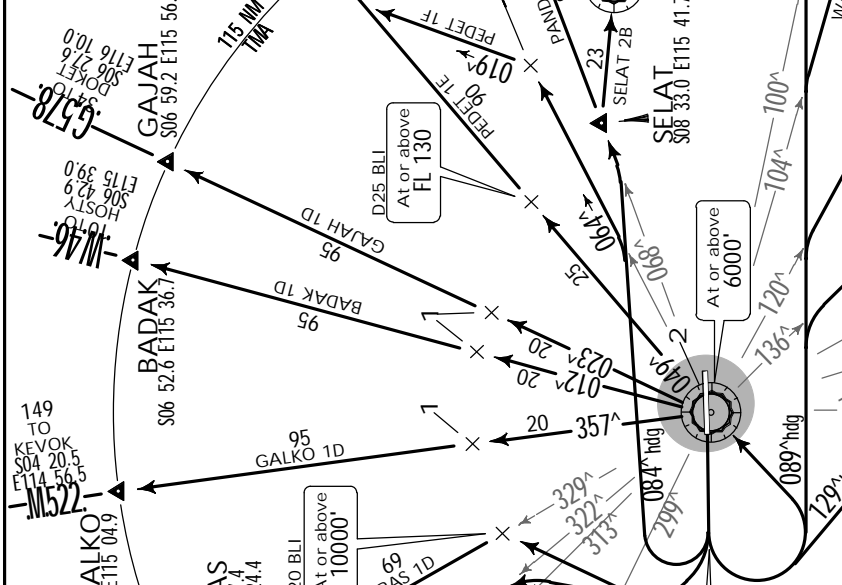
STAR	ROUTING
ANGSA ONE BRAVO [ANGS1B]	From W-33 after ANGSA proceed to LOMBO on track 286 [^] , descend to 7000', then proceed to BENOA on track 267 [^] , descend to 3000' or as instructed by ATC.
BADAK ONE BRAVO [BADA1B]	From W-46 after BADAK proceed to DUGUL on track 188 [^] , descend to FL 130, then proceed to BENOA on track 179 [^] , at BLI 25 DME leave descend to 3000' or as instructed by ATC. FL 130
ENTAS TWO BRAVO [ENTA2B]	From W-45 after ENTAS proceed to BUYAN on track 145 [^] , descend to 8000', cross BLI 58 DME at or above FL 115, then proceed to BENOA on track 121 [^] , cross BLI 25 DME, descend to 3000' or as instructed by ATC.
GAGAK ONE BRAVO [GAGA1B]	From M-635 after GAGAK proceed to KEDAT on track 317 [^] , descend to 7000', then proceed to BENOA on track 336 [^] , descend to 3000' or as instructed by ATC.
GAJAH ONE BRAVO [GAJA1B]	From G-578 after GAJAH proceed to DUGUL on track 203 [^] , descend to FL 130, then proceed to BENOA on track 179 [^] , at BLI 25 DME leave descend to 3000' or as instructed by ATC. FL 130
GALKO TWO BRAVO [GALK2B]	From M-522 after GALKO proceed to DUGUL on track 166 [^] , descend to FL 130, then proceed to BENOA on track 179 [^] , at BLI 25 DME leave descend to 3000' or as instructed by ATC. FL 130
JALAK ONE BRAVO [JALA1B]	From R-592 after JALAK proceed to KEDAT on track 014 [^] , descend to 7000', then proceed to BENOA on track 336 [^] , descend to 3000' or as instructed by ATC.
LOMBO TWO BRAVO [LOMB2B]	From MTM on W-44 after LOMBO proceed to BENOA on track 267 [^] , descend to 3000' or as instructed by ATC.
MALEO ONE BRAVO [MALE1B]	From B-349 after MALEO proceed to KEDAT on track 338 [^] , descend to 7000', then proceed to BENOA on track 336 [^] , descend to 3000' or as instructed by ATC.
MURAI ONE BRAVO [MURA1B]	From G-578 after MURAI proceed to KEDAT on track 355 [^] , descend to 7000', then proceed to BENOA on track 336 [^] , descend to 3000' or as instructed by ATC.
PANDA ONE BRAVO [PAND1B]	From W-44 after PANDA proceed to LOMBO on track 240 [^] , descend to 7000', cross BLI 71 DME at or above FL 150, then proceed to BENOA on track 267 [^] , descend to 3000' or as instructed by ATC.
PEDET ONE BRAVO [PEDE1B]	From W-41 after PEDET proceed to LOMBO on track 214 [^] , descend to 7000', cross BLI 55 DME at or above FL 130, then proceed to BENOA on track 267 [^] , descend to 3000' or as instructed by ATC.
PENYU ONE BRAVO [PENY1B]	From W-42 after PENYU proceed to LOMBO on track 259 [^] , descend to 7000', cross BLI 71 DME at or above FL 150, then proceed to BENOA on track 267 [^] , descend to 3000' or as instructed by ATC.
RABOL TWO BRAVO [RABO2B]	From M-766/W-33 after RABOL proceed to BUYAN on track 110 [^] , descend to 8000', cross BLI 58 DME at or above FL 130, then proceed to BENOA on track 121 [^] , cross BLI 25 DME, descend to 3000' or as instructed by ATC.
SRITI ONE BRAVO [SRIT1B]	From G-326 after SRITI proceed to KEDAT on track 294 [^] , descend to 7000', then proceed to BENOA on track 336 [^] , descend to 3000' or as instructed by ATC.
TIRAS ONE BRAVO [TIRA1B]	From G-464 after TIRAS proceed to BUYAN on track 155 [^] , descend to 8000', then proceed to BENOA on track 121 [^] , cross BLI 25 DME, descend to 3000' or as instructed by ATC.
UDANG ONE BRAVO [UDAN1B]	From W-13 after UDANG proceed to BUYAN on track 131 [^] , descend to 8000', cross BLI 58 DME at or above FL 130, then proceed to BENOA on track 121 [^] , cross BLI 25 DME, descend to 3000' or as instructed by ATC.
WALET ONE BRAVO [WALE1B]	From M-766 after WALET proceed to LOMBO on track 293 [^] , descend to 7000', then proceed to BENOA on track 267 [^] , descend to 3000' or as instructed by ATC.

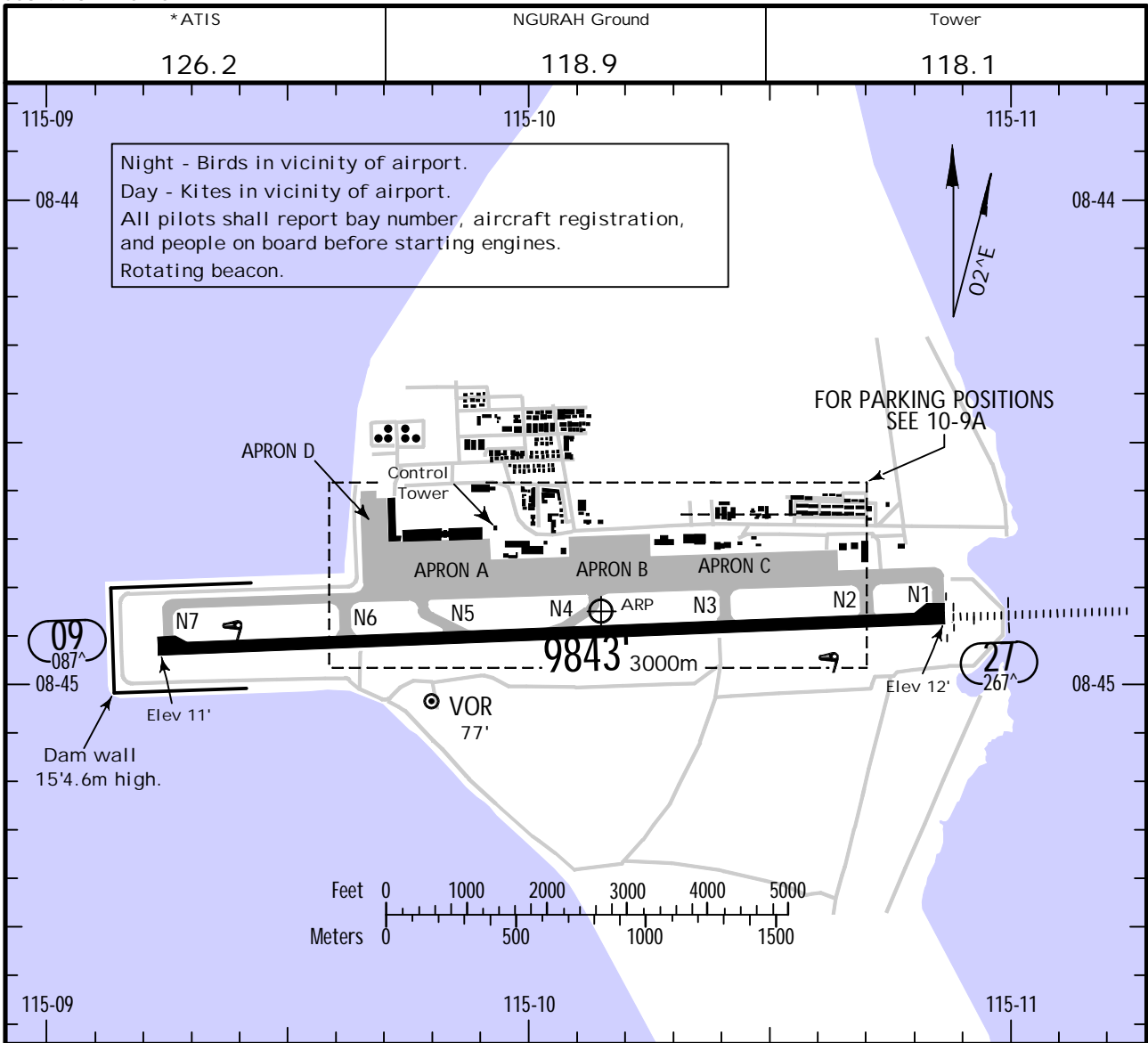
Apt Elev 14'
Trans level: FL 130 Trans alt: 11000'

No MSA published

RWY 27 DEPARTURES

ANGSA ONE DELTA, BADAK ONE DELTA, ENTAS TWO DELTA, GAGAK ONE DELTA, GAJAH ONE DELTA, GALKO ONE DELTA, JALAK ONE DELTA, MALEO ONE DELTA, MURAI ONE DELTA, PANDA ONE DELTA, PEDET ONE DELTA, PEDET ONE FOX TROT, RABOL TWO DELTA, SELAT TWO BRAVO, SRITI ONE DELTA, TIRAS ONE DELTA, UDANG ONE DELTA, WALET ONE DELTA



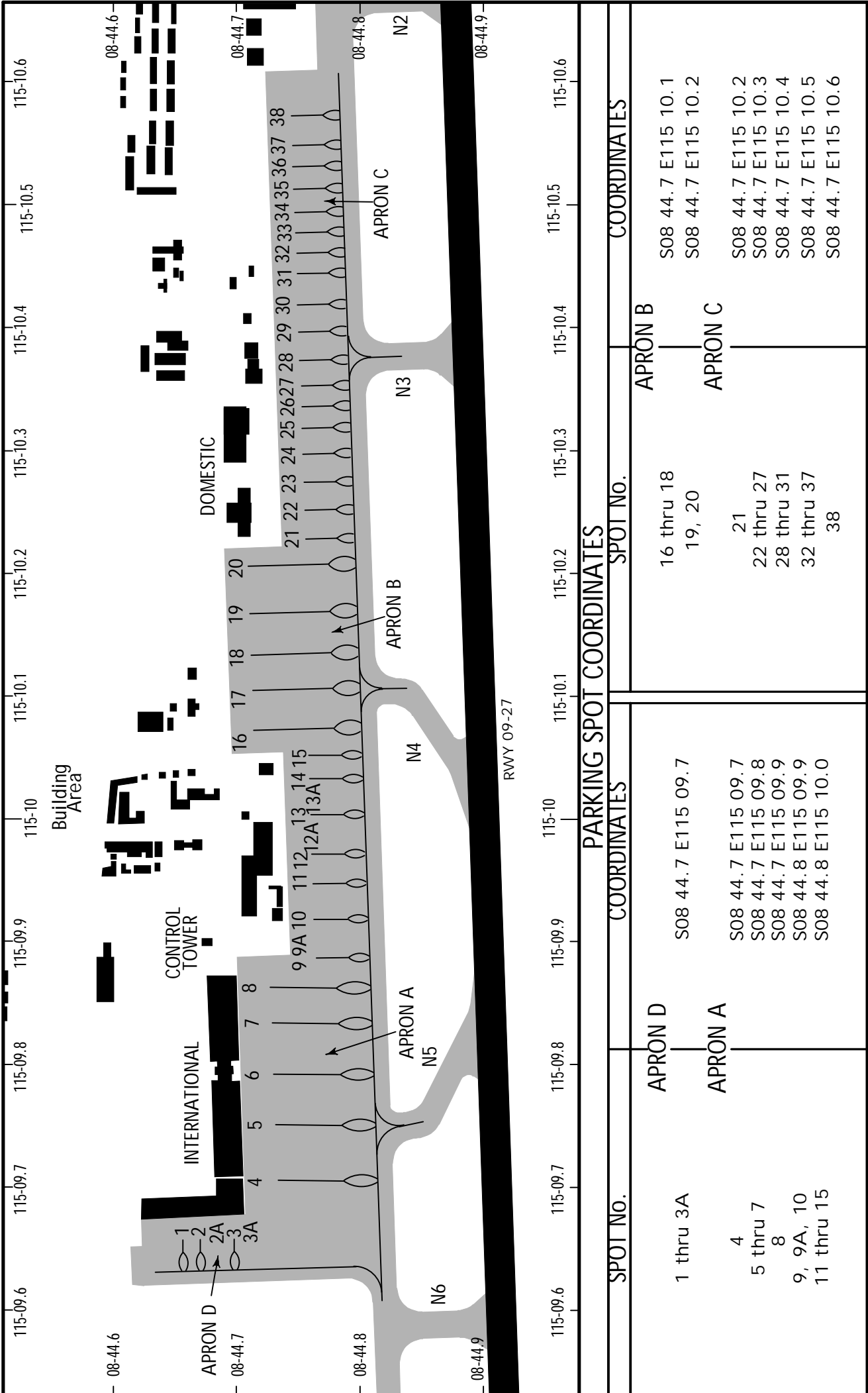


ADDITIONAL RUNWAY INFORMATION

RWY					USABLE LENGTHS		TAKE-OFF	WIDTH
	HIRL	REIL	PAPI-L (angle 3.0°)	Threshold	LANDING BEYOND Glide Slope			
09	HIRL	REIL	PAPI-L (angle 3.0°)					148'
27	HIRL	HIALS	REIL	PAPI-L (angle 3.0°)		8890' 2710m		45m

TAKE-OFF

	AIR CARRIER (JAA)		AIR CARRIER (FAR 121)	
	LVP must be in Force All Rwys RCLM (Day only) or RL	All Rwys RCLM (Day only) or RL	All Rwys Adequate Vis Ref	
A				
B	250m	400m	2 Eng	400m
C			3 & 4 Eng	
D	300m			



RWY 09-27

PARKING SPOT COORDINATES

SPOT No.	COORDINATES	SPOT No.	COORDINATES
1 thru 3A	S08 44.7 E115 09.7	16 thru 18	S08 44.7 E115 10.1
4	S08 44.7 E115 09.7	19, 20	S08 44.7 E115 10.2
5 thru 7	S08 44.7 E115 09.8	21	S08 44.7 E115 10.2
8	S08 44.7 E115 09.9	22 thru 27	S08 44.7 E115 10.3
9, 9A, 10	S08 44.8 E115 09.9	28 thru 31	S08 44.7 E115 10.4
11 thru 15	S08 44.8 E115 10.0	32 thru 37	S08 44.7 E115 10.5
		38	S08 44.7 E115 10.6

VISUAL DOCKING GUIDANCE SYSTEM

VISUAL DOCKING PARKING GUIDANCE SYSTEM AT AIRCRAFT STANDS

- The RLG visual docking guidance system is installed at parking stand Nr. 3, 4, 5, and 6 at Bali International Airport.
- The system is aligned for interpretation by the pilot in the left hand seat.

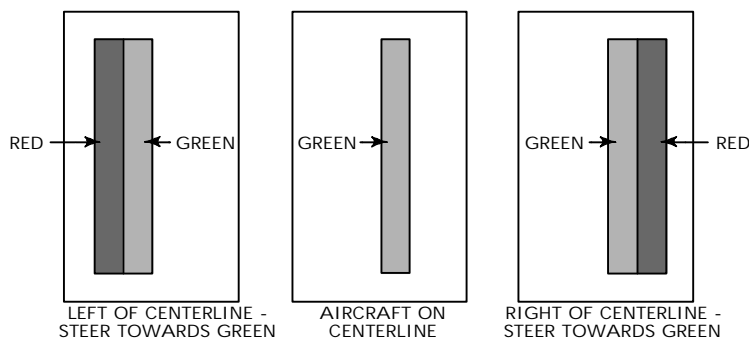
DOCKING PROCEDURES

- Pilot while taxiing Aircraft into a parking stand Nr. 3, 4, 5, and 6 shall stop the aircraft immediately, if he sees that the docking system is not switched on or is unserviceable or when it shows a different Aircraft type.
- Aircraft type indication
 - Confirm Aircraft type displayed prior to turning into stand.
 - Discontinue docking when wrong Aircraft type is illuminated.

(Aircraft Marshaller shall recheck system or Marshal Aircraft into stand)

c. Centerline Guidance

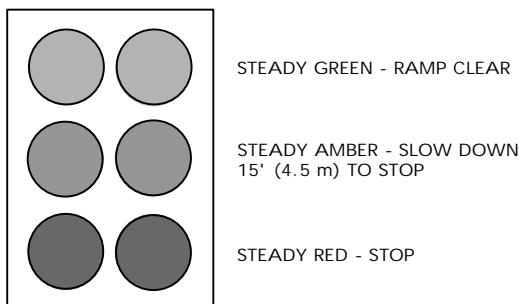
- Look at bottom half of housing and interpret vertical neon light as shown:



- Discontinue docking when lights go off.

d. Stopping Guidance

- Look at round incandescent lamp on top half of housing and interpret as shown:



- Discontinue docking immediately should lights go off.

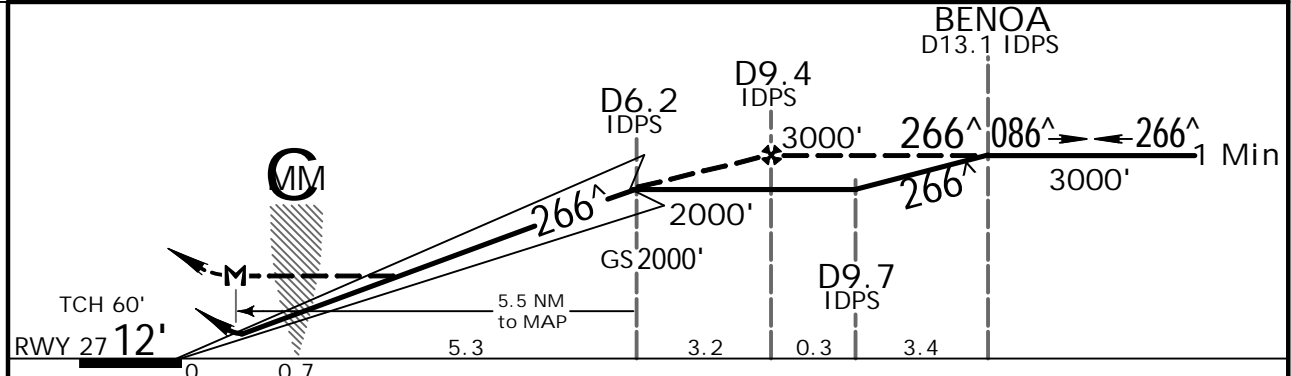
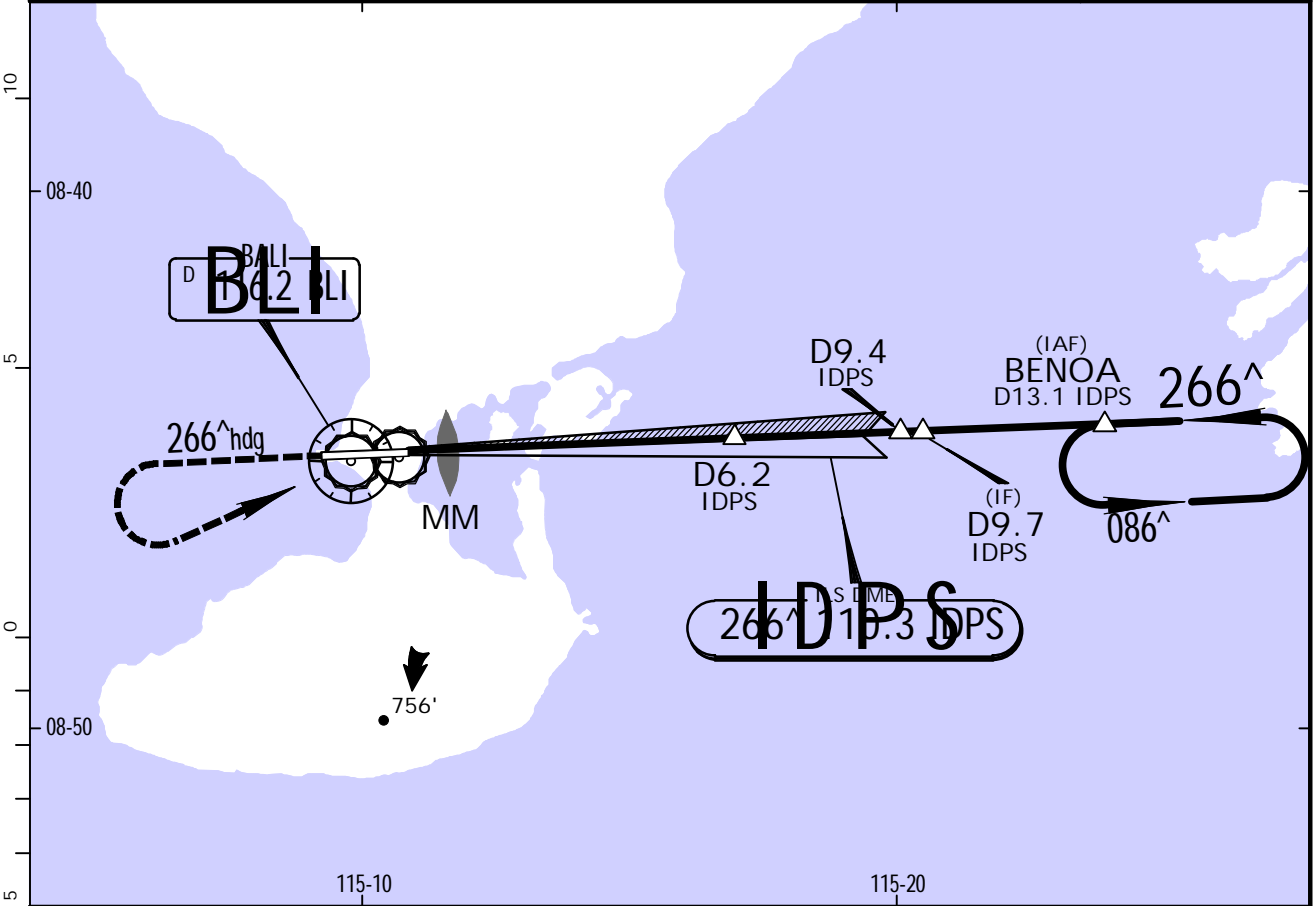
(Aircraft Marshaller shall Marshal Aircraft into stand)

VISUAL DOCKING GUIDANCE SYSTEM

TO AVOID OVER SHOOTING

- a. When Using the RLG system, pilots taxi into stand at minimum speed.
- b. On seeing the round incandescent amber lights, slowdown and prepare to stop.
- c. The round incandescent amber and red lights are activated by the Aircraft as its nose-wheel passes over the indication loops at the parking stand centerline. The lights may not come on if Aircraft is not properly lined up on the centerline. Pilot should stop aircraft immediately when the red lights come on suddenly or when given the stop sign by the Aircraft Marshaller.

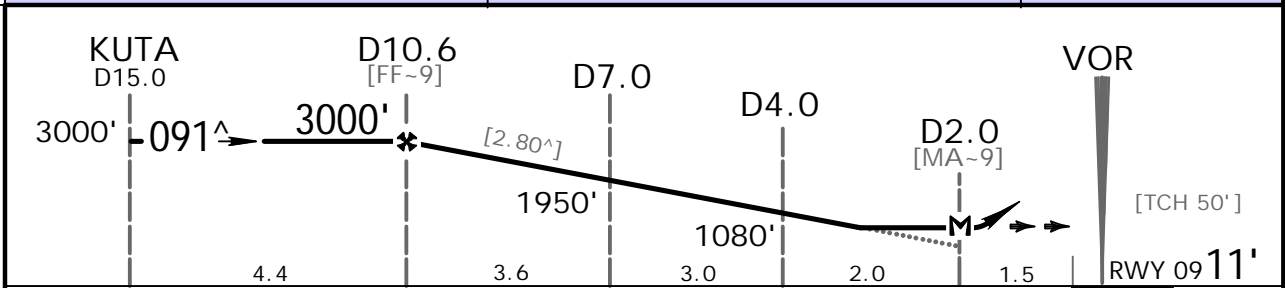
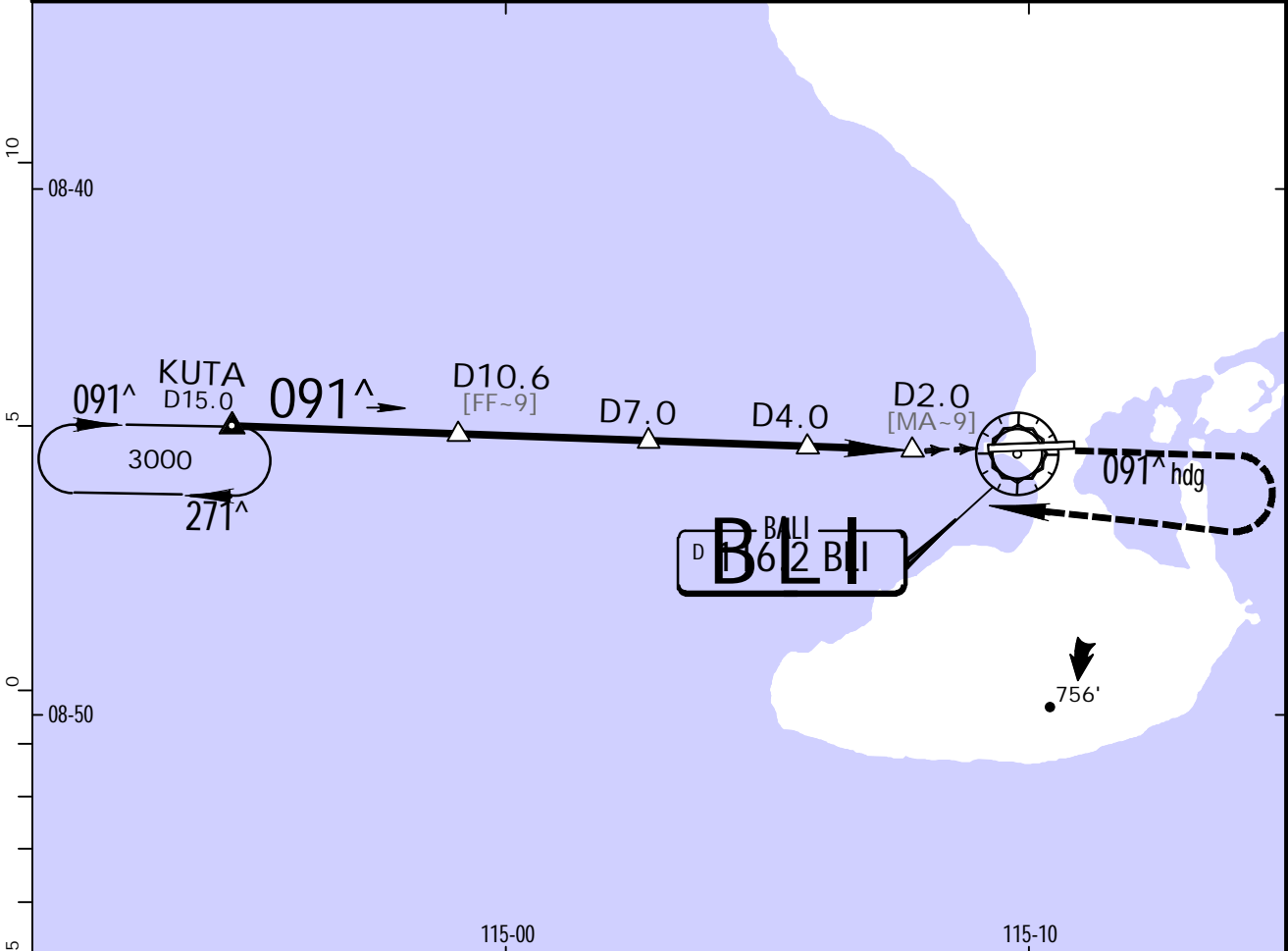
* ATIS 126.2		BALI Director (R) 119.7		NGURAH Tower 118.1		Ground 118.9	
LOC IDPS 110.3	Final Apch Crs 266 [^]	GS D6.2 IDPS 2000' (1988')	ILS DA(H) Refer to Minimums	Apt Elev 14' Rwy 27 12'			
MISSED APCH: Maintain 266 [^] heading until 1500', then turn LEFT, climb to 6000'. Proceed to BENOA holding point via overhead BLI VOR, cross BLI VOR at or above 5000' or as instructed by ATC.							MSA BLI VOR
Alt Set: hPa		Rwy Elev: 0 hPa		Trans level: FL 130		Trans alt: 11000'	



Gnd speed-Kts	70	90	100	120	140	160	HIALS REIL PAPI	266 [^] hdg	1500' ↑	
GS	3.00 [^]	377	484	538	646	753				861
Rate of descent on final (feet/min)		362	465	517	621	724				827
D6.2 IDPS to MAP	5.5	4:43	3:40	3:18	2:45	2:21				2:04

STRAIGHT-IN LANDING RWY 27				CIRCLE-TO-LAND	
ILS DA(H) CAT A & B 245' (233') CAT C & D 265' (253')		LOC (GS out) MDA(H) 360' (348')		Max Kts	
FULL		ALS out		MDA(H)	
A				100	720' (706')-1600m
B				135	
C	RVR 550m VIS 800m	1200m	800m	180	1250' (1236')-4000m
D			1600m	205	1250' (1236')-4400m

*ATIS 126.2		BALI Director (R) 119.7		NGURAH Tower 118.1		Ground 118.9	
VOR BLI 116.2	Final Apch Crs 091 [^]	Minimum Alt D10.6 3000' (2989')	MDA(H) 470' (459')	Apt Elev 14' Rwy 09 11'			
MISSED APCH: Maintain heading 091 [^] climb to 3000', then turn RIGHT and proceed to KUTA D15.0 or contact ATC for further instructions.							MSA BLI VOR
Alt Set: hPa		Rwy Elev: 0 hPa		Trans level: FL 130		Trans alt: 11000'	

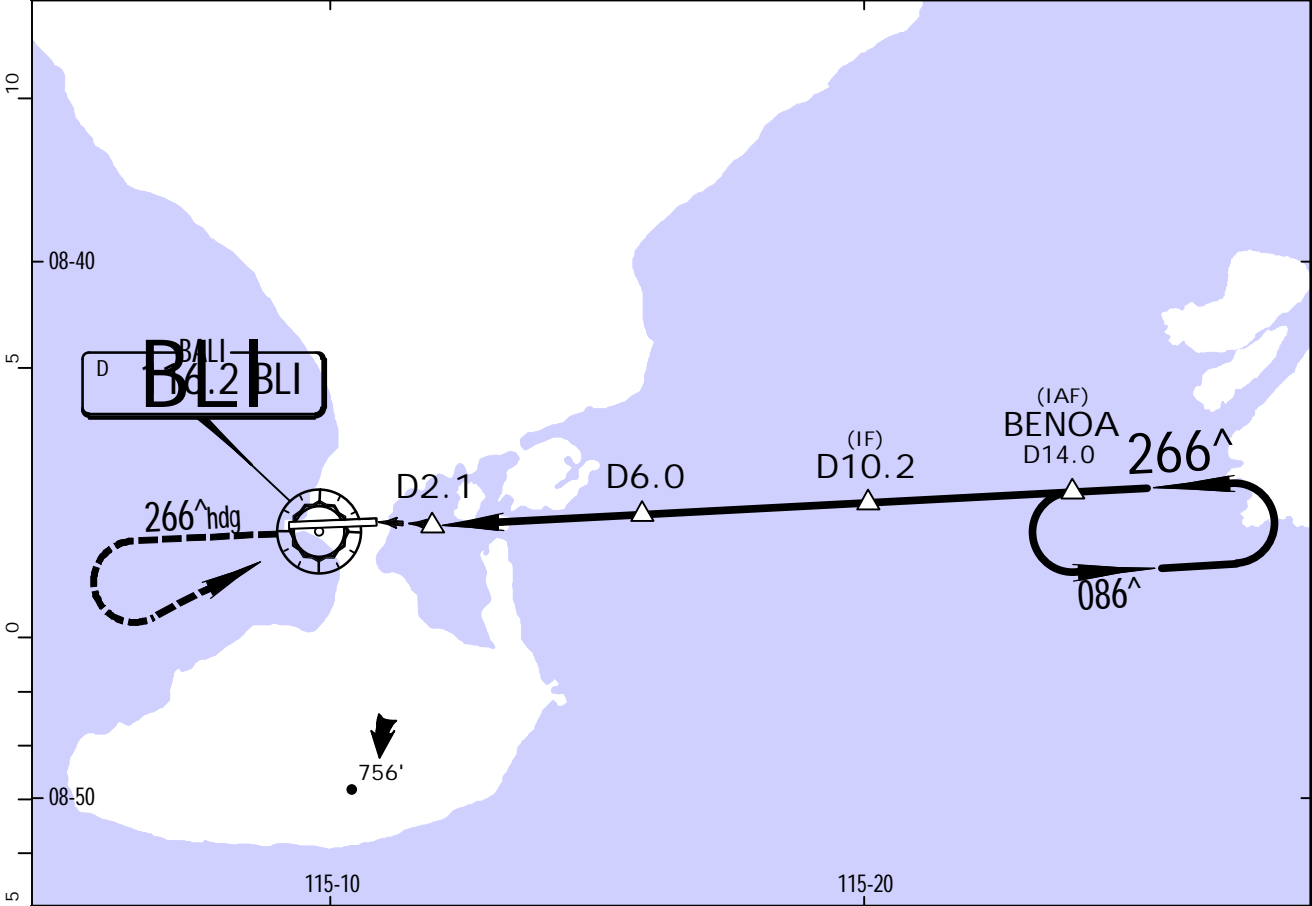


Gnd speed-Kts	70	90	100	120	140	160	REIL PAPI-L	091 [^] hdg	3000' ↑	RT →	KUTA
Descent angle [2.80 [^]]	347	446	495	594	693	792					
MAP at D2.0											

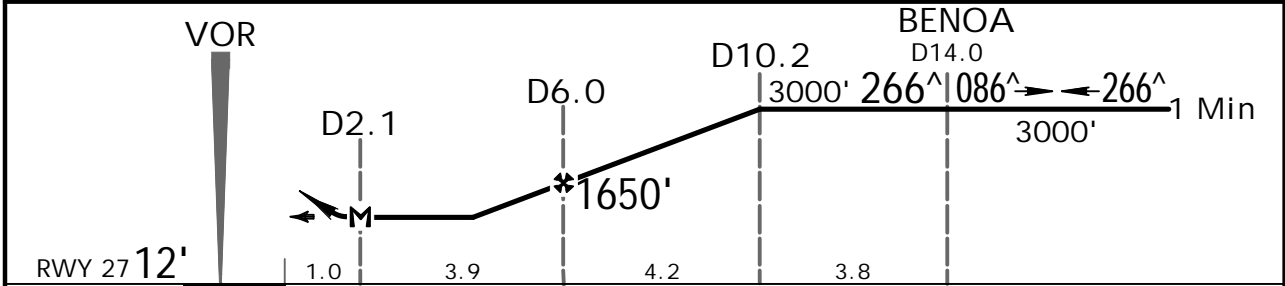
STRAIGHT-IN LANDING RWY09				CIRCLE-TO-LAND			
MDA(H) 470' (459')				Max Kts			
2800m				MDA(H)			
				1170' (1156') - 2800m			
				1170' (1156') - 4800m			
				205			

PANS OPS

*ATIS 126.2		BALI Director (R) 119.7		NGURAH Tower 118.1		Ground 118.9	
VOR BLI 116.2	Final Apch Crs 266 [^]	Minimum Alt D6.0 1650' (1638')	MDA(H) 370' (358')	Apt Elev 14' Rwy 27 12'			
MISSED APCH: Maintain 266 [^] heading until 2000', then turn LEFT climb to 6000' proceed to D14.0 holding point via overhead BLI VOR, cross BLI VOR at or above 5000' or as instructed by ATC.							MSA BLI VOR
Alt Set: hPa		Rwy Elev: 0 hPa		Trans level: FL 130		Trans alt: 11000'	



Distance from VOR	D3.0	D4.0	D5.0
ALTITUDE	698'	1016'	1335'



Gnd speed-Kts	70	90	100	120	140	160	HIALS REIL PAPI 266 [^] hdg 2000' ↑
MAP at D2.1 or D6.0 to MAP 4.1	3:31	2:44	2:28	2:03	1:45	1:32	

STRAIGHT-IN LANDING RWY 27			CIRCLE-TO-LAND		
MDA(H) 370' (358')			MDA(H)		
ALS out			Max Kts		
A			100	720'(706')-1600m	
B	1600m		135		
C			180	1250'(1236')-4000m	
D	2000m		205	1250'(1236')-4400m	

PANS OPS

Chart changes since cycle 09-2013

ADD = added chart, REV = revised chart, DEL = deleted chart.

ACT	PROCEDURE IDENT	INDEX	REV DATE	EFF DATE
-----	-----------------	-------	----------	----------

BALI, (NGURAH RAI INTL - WADD)

TERMINAL CHART CHANGE NOTICES

No Chart Change Notices for Airport WADD