

# TNCA

---

## Airport information:

Country: Aruba

City: ORANJESTAD

Coordinates: N 12° 30.1', W 070° 00.9'

Elevation: 62

Customs: Customs

Fuel: 100, Jet A1

RFF: CAT 9

hours: 11-04

## Runways:

Runway 11

Takeoff length: 2743, Landing length: 2743

Runway 29

Takeoff length: 2743, Landing length: 2743

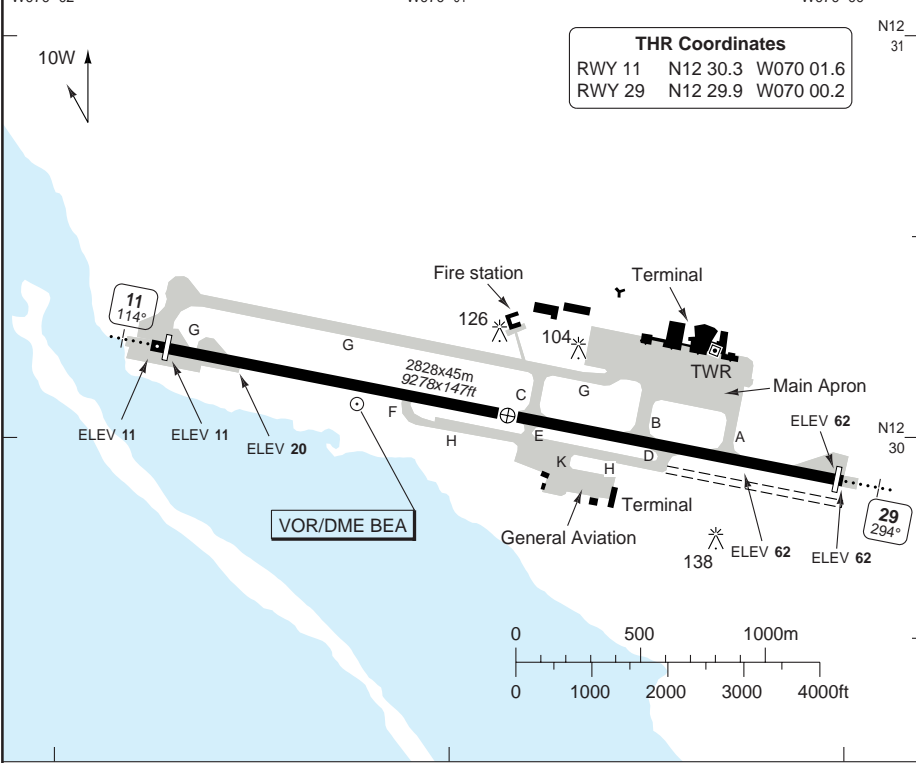
# AERODROME

## Reina Beatrix INTL ARUBA/ORANJESTAD

10 - 1

Beatrix APN <b>121.6</b>	GND <b>121.9</b>	TWR <b>120.9</b> <b>128.85</b>	ATIS <b>132.1</b>
-----------------------------	---------------------	--------------------------------------	----------------------

AD Elev <b>62</b>	ARP: N12 30.1 W070 00.9	RFF: CAT 8	AD HR: 11 - 04
-------------------	-------------------------	------------	----------------



THR Coordinates		
RWY 11	N12 30.3	W070 01.6
RWY 29	N12 29.9	W070 00.2

RWY	Slope	TORA m/ft	LDA m/ft	ALS	REDL	Additional
11	+0.6	2803 / 9196	2719 / 8920	H-E ①	②	P 3°
29	-0.6	2744 / 9002	2719 / 8920	H-E ①	②	P 3°

① 420m. ② First 600m white/amber, remainder 60m apart omni-directional white.

**EU OPS TAKE OFF MINIMA**

RWY	Facilities	RVR			
		A	B	C	D
11/29	RCL (day only) or RCL + REDL	400m			
	NIL (day only)	500m			

© Navitech - tnca01laorgo

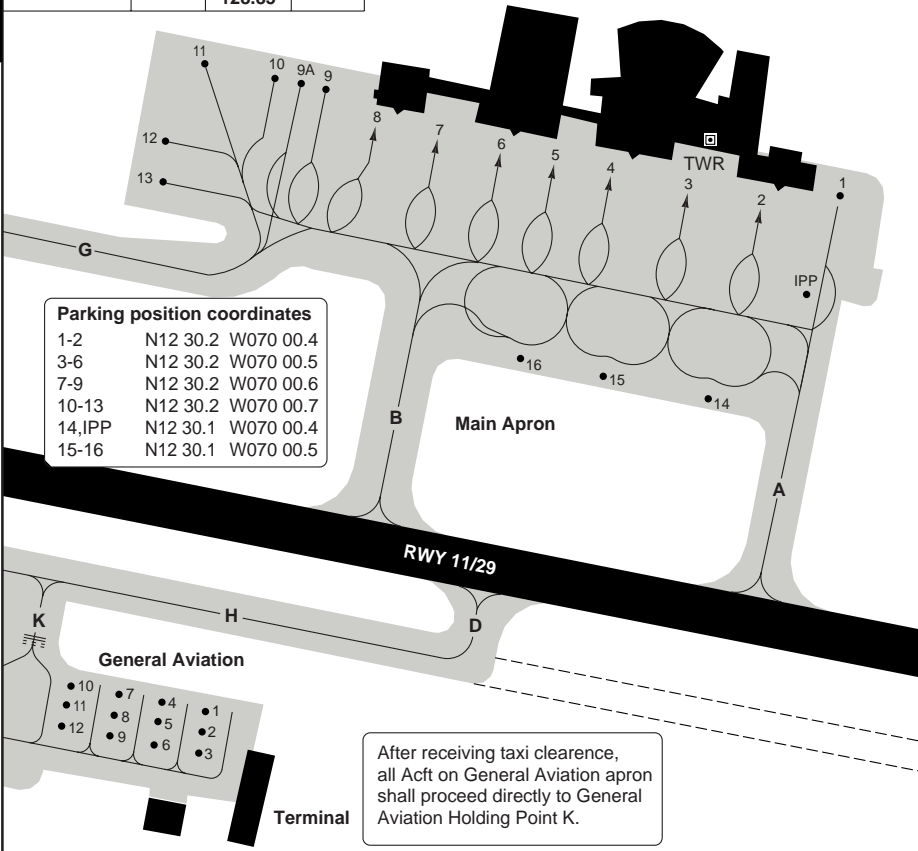
Change: New spec.

**THIS CHART IS A PART OF NAVIGRAPH NDAC AND IS INTENDED FOR FLIGHT SIMULATION USE ONLY**

# AERODROME Parking Reina Beatrix INTL ARUBA/ORANJESTAD

10 - 2

Beatrix APN	GND	TWR	ATIS
121.6	121.9	120.9	132.1
		128.85	



© Navitech - tnca02laorg0

Change: New spec.

**THIS CHART IS A PART OF NAVIGRAPH NDAC AND IS INTENDED FOR FLIGHT SIMULATION USE ONLY**

## GENERAL

## Reina Beatrix INTL ARUBA/ORANJESTAD

## GENERAL

1. **WARNING**  
Bird hazard.
2. **CAUTION**  
A 1402m/4600ft drag strip orientated 110°/290°, 7nm SE of TNCA can be mistaken for RWY.
3. **TRAFFIC NOTES**
  - 3.1 Avoid overflying oil refinery below **2500**.
  - 3.2 All DEPs shall cross departure end of RWY before turning.
  - 3.3 Jets shall maintain RWY HDG until at least D6 BEA or **2500**, whichever is earlier, before turning. RWY 11 right turns.
  - 3.4 BEA VOR/DME unusable beyond 6nm below **2000**, in sectors, R060 CW R083, R087 CW R099 and R118 CW R140.
4. **COM FAIL**  
In the event of COM Fail on APN freq 121.6, ACFT shall remain on TWR freq.
5. **CIRCUITS**  
RWY 11 right hand circuit.

## ARRIVAL

1. **LANDING**  
After leaving TWY, arriving ACFT must call APN and follow instructions.
2. **REVERSE THRUST**  
Reverse thrust or variable pitch propellers must not be used on APN or at parking stands.
3. **PARKING**
  - 3.1 ACFT parking at stands 1-13 will receive either marshalling or visual docking guidance system instructions.
  - 3.2 ACFT parked on stands without visual docking guidance systems shall only leave stands by push-back.

## DEPARTURE

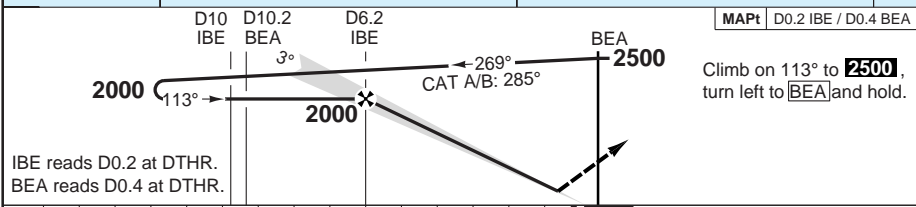
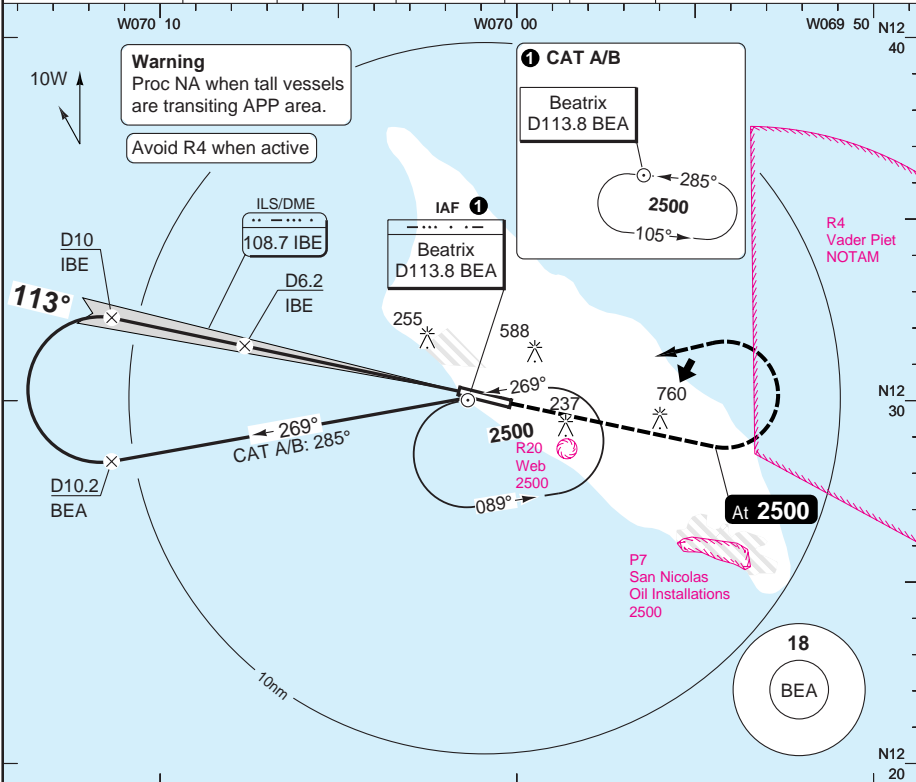
1. **START-UP**  
ACFT are to request start-up from TWR 5 mins before estimated off block time. Start-up CLNC must be relayed to APN and then wait for push-back to commence.
2. **NOISE ABATEMENT**
  - 2.1 All jets, departing RWY 11, authorised to make a left or right turn to proceed on routes G885 northeast bound, A567 north bound, G442 west bound or traffic departing south bound shall maintain RWY HDG until at least D6 BEA or climb to **2500** on RWY HDG, whichever is earlier, before turning on course.
  - 2.2 RWY 11 DEPs shall exercise extreme caution to avoid entering R4 Vader Piet.
3. **RWY 29**  
IFR DEPs not authorised when tall vessels are in RWY 29 take-off area.

10 - 3

# ILS RWY 11

## Reina Beatrix INTL ARUBA/ORANJESTAD

Beatrix APP/TWR <b>120.9</b> <b>128.85</b>	GND <b>121.9</b>	ATIS <b>132.1</b>				
ILS/DME <b>108.7 IBE</b>	FAT <b>113°</b>	TDZ Elev <b>20</b>	AD Elev <b>62</b>	TL <b>40</b>	TA <b>2500</b>	



	nm	15	14	13	12	11	10	9	8	7	6	5	4	3	2	1	0	TCH 51	
ACFT	ILS	LOC+DME		Circling		DME IBE	3.0° ALT	LDA 2719x45 8920x147ft P 3°											
A	240 (221) 1000m	440 (428) 1500m		890 (828) 1.5km		6.2	2000												
B	250 (233) 1000m			890 (828) 1.6km		5	1620												
C	260 (241) 1000m	440 (428) 1800m		1160 (1098) 2.4km		4	1290												
D	270 (251) 1100m			1160 (1098) 3.6km		3	970												
	GS	80	100	120	140	160	2	650											
	ROD 3.0°	440	540	650	760	870	1.4	440											
	FAF-MAPt	4:30	3:35	3:00	2:34	2:15													

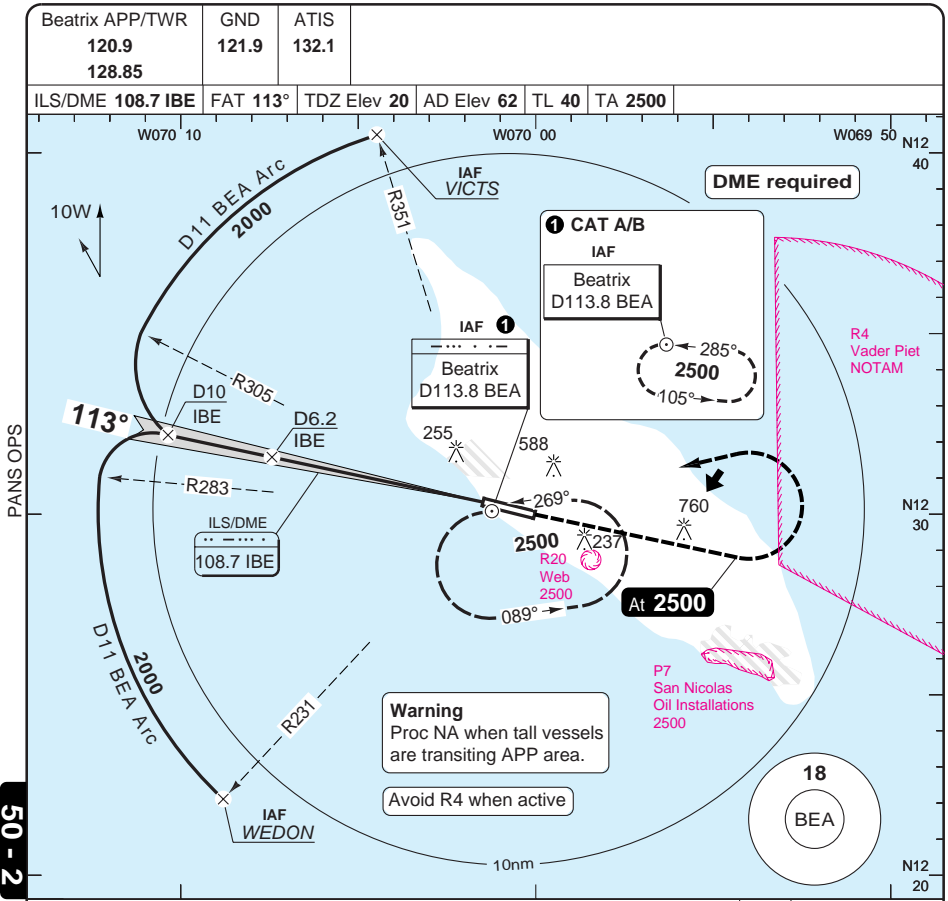
© Navtech - tnca01iaip00  
EU OPS

Change: New spec.

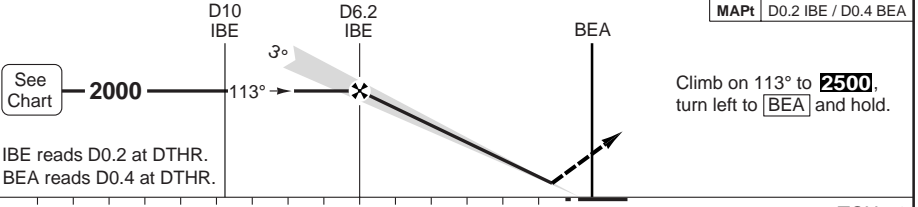
**THIS CHART IS A PART OF NAVIGRAPH NDAC AND IS INTENDED FOR FLIGHT SIMULATION USE ONLY**

ILS RWY 11 ARC

Reina Beatrix INTL ARUBA/ORANJESTAD



50 - 2



nm 15 14 13 12 11 10 9 8 7 6 5 4 3 2 1 0						TCH 51		
ACFT	ILS	LOC+DME		Circling		DME	3.0° ALT	LDA 2719x45 8920x147ft P 3°
A	240 (221) 1000m	440 (428)		890 (828) 1.5km		6.2	2000	
B	250 (233) 1000m	1500m		890 (828) 1.6km		5	1620	
C	260 (241) 1000m	440 (428)		1160 (1098) 2.4km		4	1290	
D	270 (251) 1100m	1800m		1160 (1098) 3.6km		3	970	
						2	650	
GS	80	100	120	140	160	1.4	440	IALS
ROD 3.0°	440	540	650	760	870			
FAF-MAPt	4:30	3:35	3:00	2:34	2:15			

© Navtech - tnca02iaip00

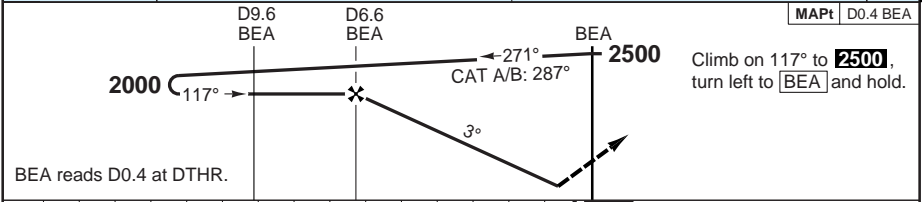
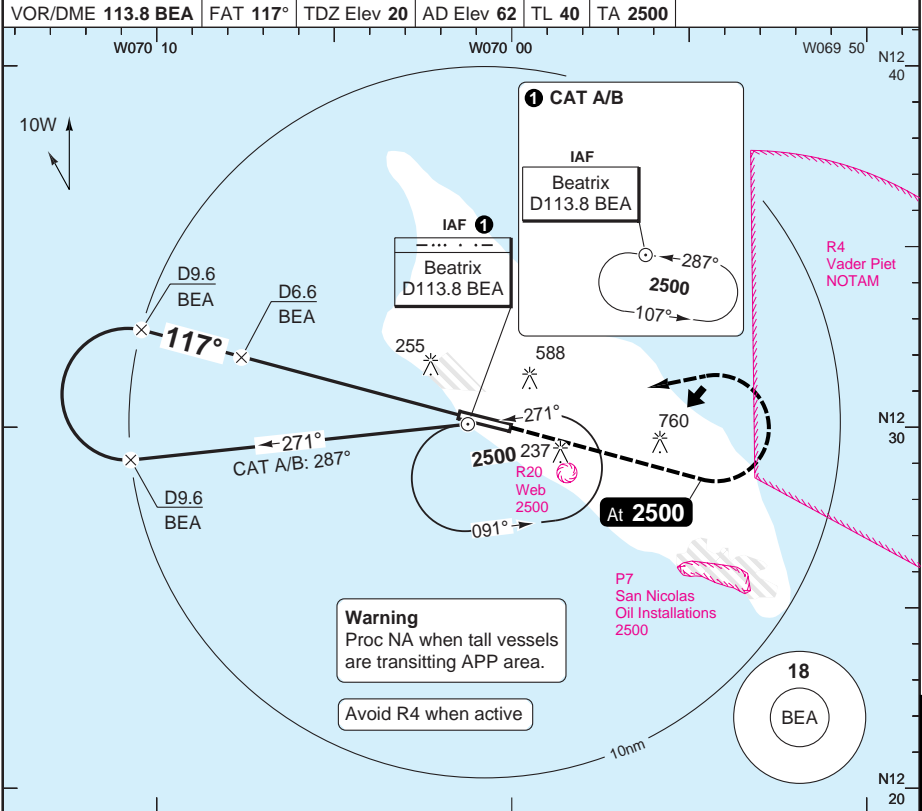
Change: New spec.

THIS CHART IS A PART OF NAVIGRAPH NDAC AND IS INTENDED FOR FLIGHT SIMULATION USE ONLY

VOR RWY 11 VOR/DME

Reina Beatrix INTL ARUBA/ORANJESTAD

Beatrix APP/TWR <b>120.9</b> <b>128.85</b>	GND <b>121.9</b>	ATIS <b>132.1</b>				
VOR/DME <b>113.8 BEA</b>	FAT <b>117°</b>	TDZ Elev <b>20</b>	AD Elev <b>62</b>	TL <b>40</b>	TA <b>2500</b>	



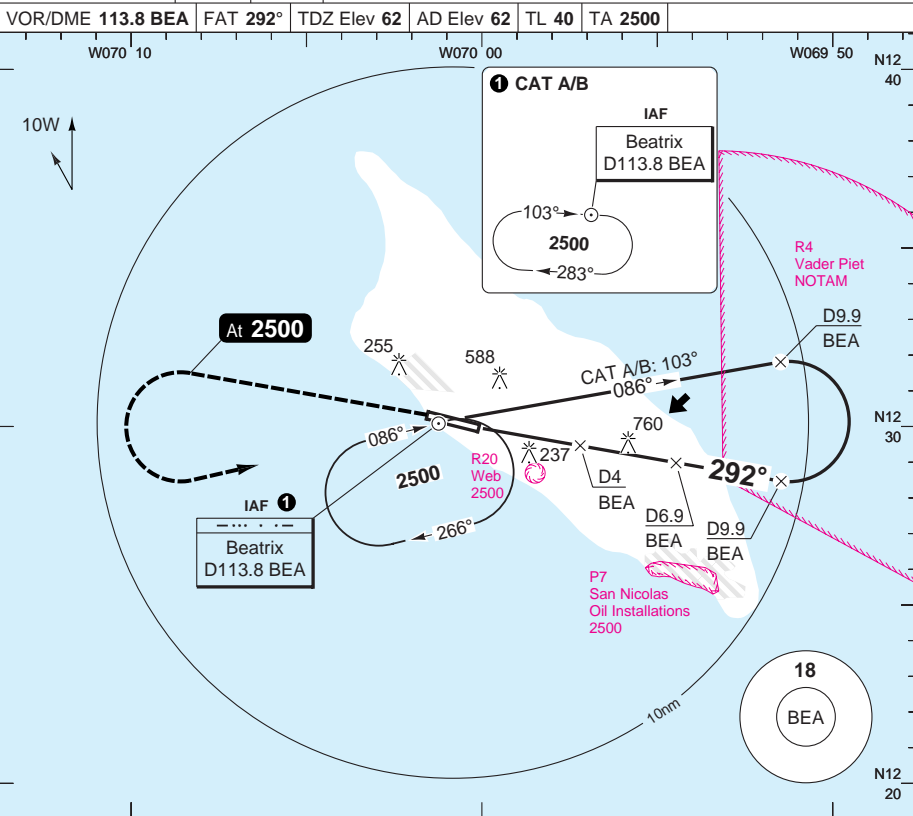
nm	15	14	13	12	11	10	9	8	7	6	5	4	3	2	1	0	TCH 50
ACFT	<b>VOR+DME</b>		<b>Circling</b>														
A	460 (448)		890 (828) 1.5km														
B	1500m		890 (828) 1.6km														
C	460 (448)		1160 (1098) 2.4km														
D	1900m		1160 (1098) 3.6km														
GS	80	100	120	140	160												
ROD 2.9°	420	530	630	730	840												
FAF-MAPt	4:39	3:43	3:06	2:39	2:19												
DME BEA	6.6	6	5	4	3	2	1.7	2.9° ALT	2000	1820	1500	1190	880	570	460	LDA 2719x45 8920x147ft P 3°	
IALS 420																	

© Navtech - tnca03iaip00

VOR RWY 29 VOR/DME

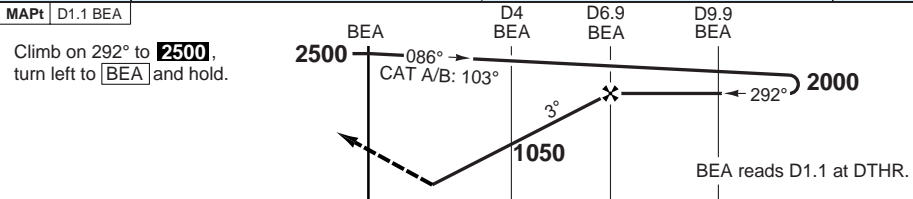
Reina Beatrix INTL ARUBA/ORANJESTAD

Beatrix APP/TWR <b>120.9</b> <b>128.85</b>	GND <b>121.9</b>	ATIS <b>132.1</b>				
VOR/DME <b>113.8 BEA</b>	FAT <b>292°</b>	TDZ Elev <b>62</b>	AD Elev <b>62</b>	TL <b>40</b>	TA <b>2500</b>	



PANS OPS

50 - 4



TCH 50

ACFT	VOR+DME	Circling	DME BEA	ALT	LDA 2719x45 8920x147ft
A	<b>480</b> (418)	<b>890</b> (828) 1.5km	3.1°		P 3°
B	1500m	<b>890</b> (828) 1.6km	6.9	<b>2000</b>	
C	<b>480</b> (418)	<b>1160</b> (1098) 2.4km	6	<b>1710</b>	IALS 420
D	1700m	<b>1160</b> (1098) 3.6km	5	<b>1390</b>	
			4	<b>1060</b>	
			3	<b>740</b>	
GS	80 100 120 140 160		2.2	<b>480</b>	
ROD 3.1°	440 550 660 770 870				
FAF-MAPt	4:21 3:28 2:54 2:29 2:10				

© Navtech - tnca04iaip00

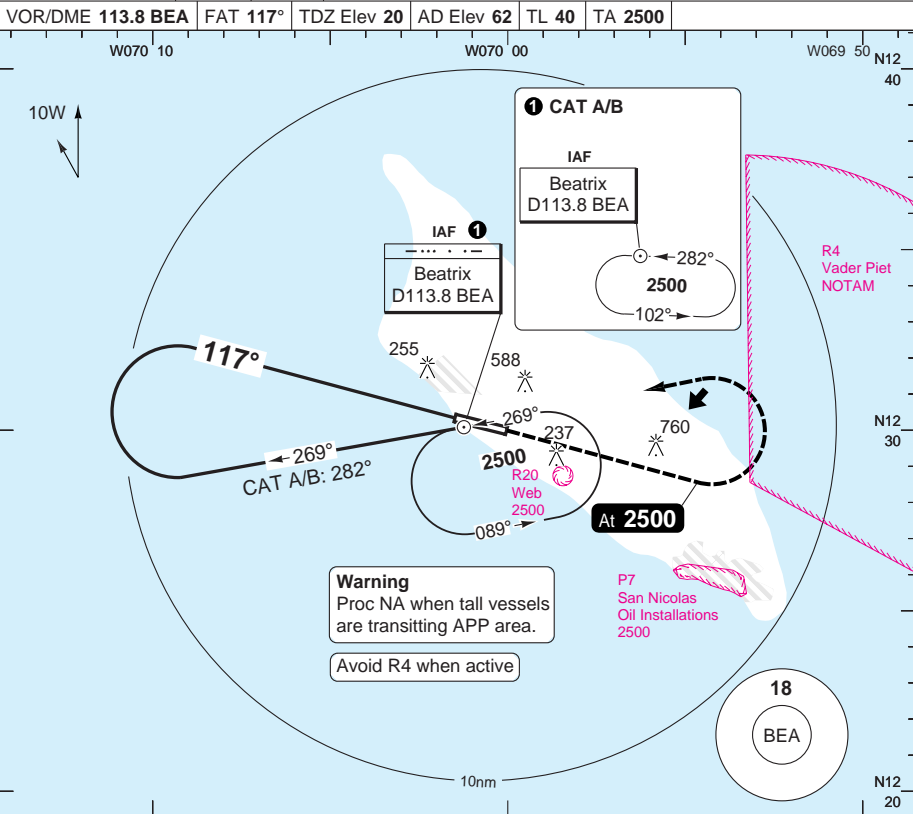
Change: New spec.

**THIS CHART IS A PART OF NAVIGRAPH NDAC AND IS INTENDED FOR FLIGHT SIMULATION USE ONLY**

# VOR RWY 11

## Reina Beatrix INTL ARUBA/ORANJESTAD

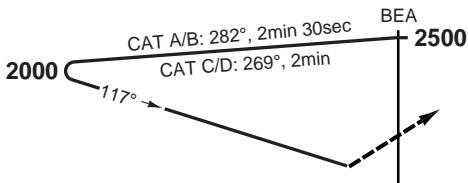
Beatrix APP/TWR <b>120.9</b> <b>128.85</b>	GND <b>121.9</b>	ATIS <b>132.1</b>				
VOR/DME <b>113.8 BEA</b>	FAT <b>117°</b>	TDZ Elev <b>20</b>	AD Elev <b>62</b>	TL <b>40</b>	TA <b>2500</b>	



PANS OPS

50 - 5

MAPt BEA



Climb on 117° to **2500**, turn left to **BEA** and hold.

nm	15	14	13	12	11	10	9	8	7	6	5	4	3	2	1	0	
ACFT	VOR	VOR <sup>a</sup>	Circling	Circling <sup>a</sup>													
A	490 (478) 2000m	490 (478) 2200m	890 (828) 2.0km	890 (828) 2.2km													
B			890 (828) 2.0km	890 (828) 2.2km													
C	490 (478) 2400m	490 (478) 2400m	1160 (1098) 2.4km	1160 (1098) 2.4km													
D			1160 (1098) 3.6km	1160 (1098) 3.6km													

<sup>a</sup> Non CDFA

LDA 2719x45

8920x147ft

P 3°



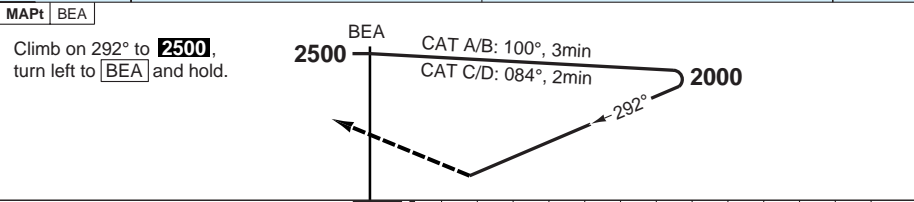
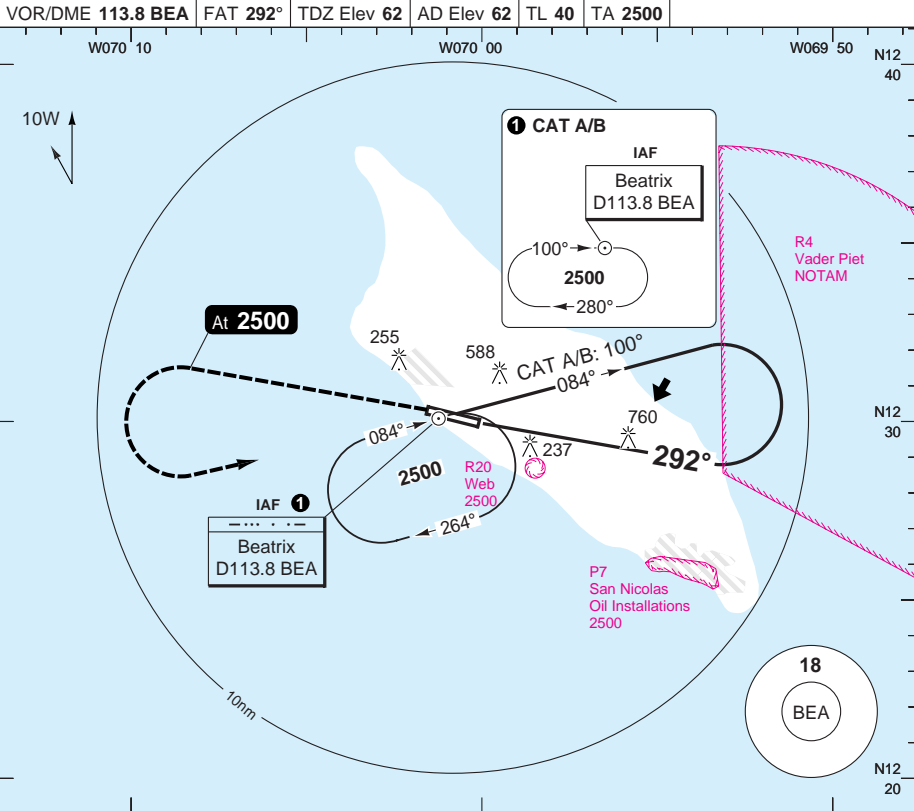
420

IALS

# VOR RWY 29

## Reina Beatrix INTL ARUBA/ORANJESTAD

Beatrix APP/TWR <b>120.9</b> <b>128.85</b>	GND <b>121.9</b>	ATIS <b>132.1</b>				
VOR/DME <b>113.8 BEA</b>	FAT <b>292°</b>	TDZ Elev <b>62</b>	AD Elev <b>62</b>	TL <b>40</b>	TA <b>2500</b>	



ACFT	VOR	VOR <sup>a</sup>	Circling	Circling <sup>a</sup>
A	<b>1060</b> (998) 4300m	<b>1060</b> (998) 4500m	<b>1060</b> (998) 4.3km	<b>1060</b> (998) 4.5km
B		<b>1060</b> (998) 4700m	<b>1160</b> (1098) 4.3km	<b>1160</b> (1098) 4.7km
C				
D				

<sup>a</sup> Non CDFA



© Navtech - tnca06iaip00

Change: New spec.

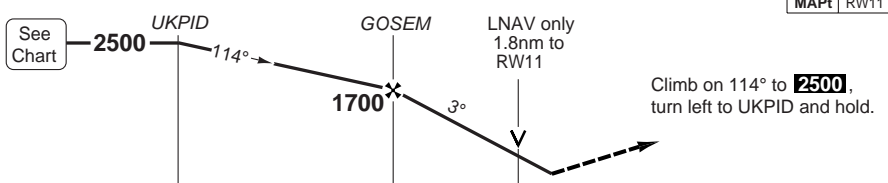
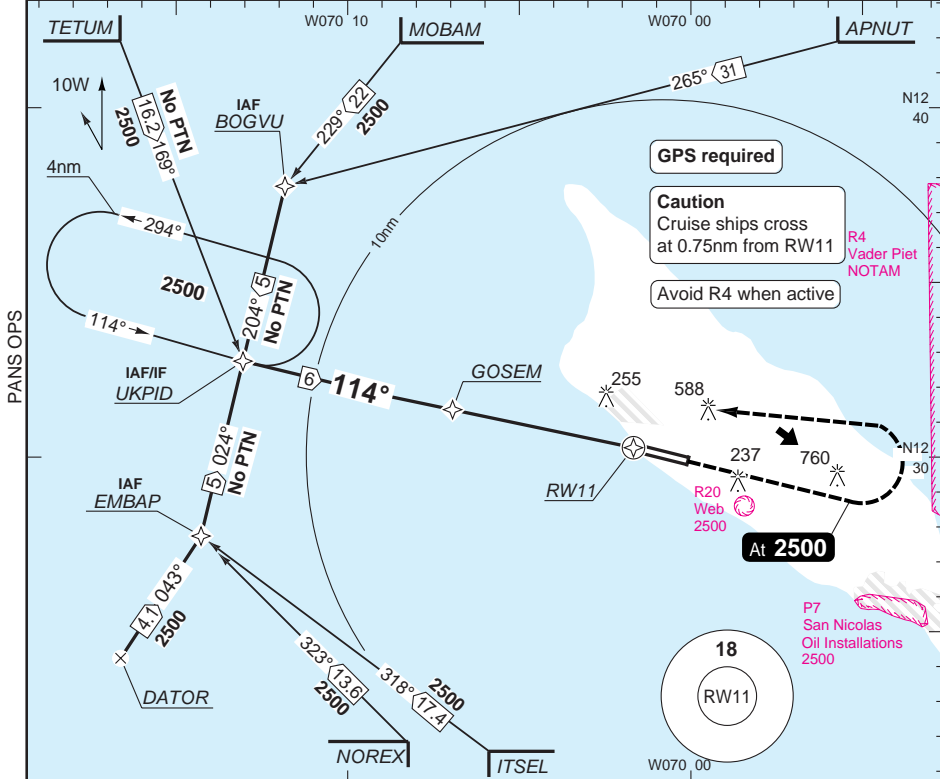
**THIS CHART IS A PART OF NAVIGRAPH NDAC AND IS INTENDED FOR FLIGHT SIMULATION USE ONLY**

# RNAV (GPS) RWY 11

## Reina Beatrix INTL ARUBA/ORANJESTAD

Beatrix APP/TWR <b>120.9</b> <b>128.85</b>	GND <b>121.9</b>	ATIS <b>132.1</b>
--	---------------------	----------------------

RNAV	FAT 114°	TDZ Elev 20	AD Elev 62	TL 40	TA 2500
------	----------	-------------	------------	-------	---------



nm	15	14	13	12	11	10	9	8	7	6	5	4	3	2	1	0	TCH 50
----	----	----	----	----	----	----	---	---	---	---	---	---	---	---	---	---	--------

ACFT	LNNAV/VNAV	LNNAV	Note: Circling NA
A	480 (460) 1.6km	620 (600) 1.6km	
B	480 (460) 2.0km	620 (600) 2.4km	
C	480 (460) 2.4km	620 (600) 2.8km	

THR	3.0° ALT	LDA 2719x45 8920x147ft
11	2500	P 3°
7.6	2320	
7	1990	
6	1670	
5	1350	
4	1030	
3	710	
2	620	
1.7	420	

GS	80	100	120	140	160
ROD 3.0°	430	540	650	760	860

© Navtech - tnca07iaip00

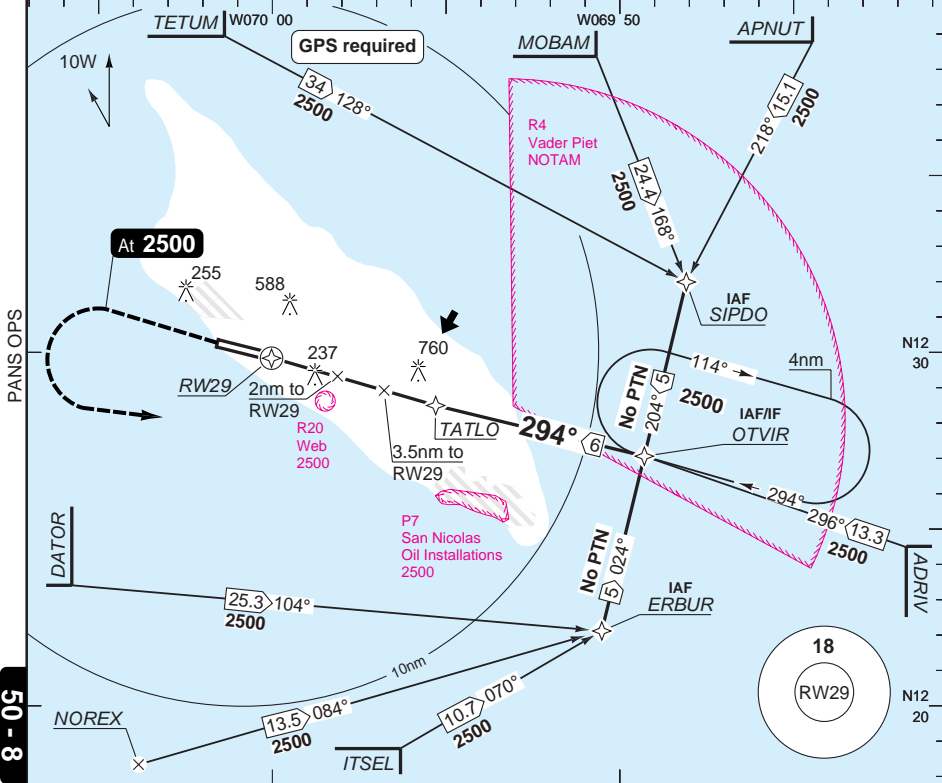
Change: New spec.

**THIS CHART IS A PART OF NAVIGRAPH NDAC AND IS INTENDED FOR FLIGHT SIMULATION USE ONLY**

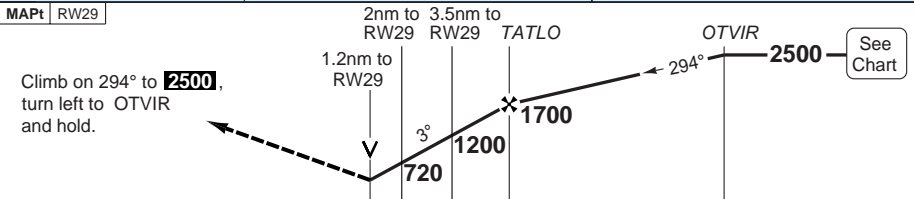
# RNAV (GPS) RWY 29 Reina Beatrix INTL ARUBA/ORANJESTAD

Beatrix APP/TWR	GND	ATIS
120.9	121.9	132.1
128.85		

RNAV	FAT 294°	TDZ Elev 62	AD Elev 62	TL 40	TA 2500
------	----------	-------------	------------	-------	---------



50 - 8



TCH 50

ACFT	LNAV
A	500 (438) 1.6km
B	
C	500 (438) 2.0km
D	500 (438) 2.4km

Note: Circling NA

THR 29	3.0° ALT	LDA 2719x45
7.5	2500	8920x147ft
7	2340	P 3°
6	2020	
5	1710	
4	1390	
3	1070	
2	750	
1.2	500	

GS	80	100	120	140	160
ROD 3.0°	430	540	640	750	850

© Navtech - tnca08iaip00

Change: New spec.

**THIS CHART IS A PART OF NAVIGRAPH NDAC AND IS INTENDED FOR FLIGHT SIMULATION USE ONLY**

## JAR-OPS Minima Reina Beatrix INTL ARUBA/ORANJESTAD

The following Minima is for Public Transport aircraft and conforms to JAR-OPS1 regulations.

STRAIGHT-IN APPROACH		C				D			
R/W	Procedure	DA/ MDA QNH ft	DH/ MDH QFE ft	RVR m	RVR No ALS m	DA/ MDA QNH ft	DH/ MDH QFE ft	RVR m	RVR No ALS m
11	ILS/DME	270	250	700	1000	280	260	800	1200
11	LOC/DME	450	430	1400	1800	450	430	1600	2000
11	VOR/DME	470	450	1400	1800	470	450	1600	2000
11	VOR	500	480	1600	2000	500	480	1800	2000
11	RNAV (L/VNAV)(1)	480	460	2000	2000	480	460	2400	2400
11	RNAV (LNAV)(1)	620	600	2000	2000	620	600	2400	2400
29	VOR/DME	480	420	1400	1800	480	420	1600	2000
29	VOR	1060	1000	1800	2000	1060	1000	2000	2000
29	RNAV (LNAV)(1)	500	440	2000	2000	500	440	2400	2400

Notes:

(1) Values shown are Vis.

CIRCLING		C			D		
R/W	Procedure	MDA QNH ft	MDH QFE ft	Vis m	MDA QNH ft	MDH QFE ft	Vis m
29	VOR	1160	1100	2400	1160	1100	3600
	Other procedures (1)	1160	1100	2400	1160	1100	3600

Notes:

(1) RNAV NA

TAKE-OFF		C		D	
Runway	Facilities	RVR	Vis	RVR	Vis
11/29	REDL and/or RCL	400	-	400	-
11/29	Nil (Day only)	500	-	500	-

Notes:

## JAR-OPS Minima Reina Beatrix INTL ARUBA/ORANJESTAD

The following Minima is for Public Transport aircraft and conforms to JAR-OPS1 regulations.

STRAIGHT-IN APPROACH		A				B			
R/W	Procedure	DA/ MDA QNH ft	DH/ MDH QFE ft	RVR  m	RVR No ALS m	DA/ MDA QNH ft	DH/ MDH QFE ft	RVR  m	RVR No ALS m
11	ILS/DME	250	230	700	1000	260	240	700	1000
11	LOC/DME	450	430	1200	1500	450	430	1300	1500
11	VOR/DME	470	450	1200	1500	470	450	1300	1500
11	VOR	500	480	1400	1500	500	480	1500	1500
11	RNAV (L/VNAV)(1)	480	460	1600	1600	480	460	1600	1600
11	RNAV (LNAV)(1)	620	600	1600	1600	620	600	1600	1600
29	VOR/DME	480	420	1200	1500	480	420	1300	1500
29	VOR	1060	1000	1500	1500	1060	1000	1500	1500
29	RNAV (LNAV)(1)	500	440	1600	1600	500	440	1600	1600

Notes:

(1) Values shown are Vis.

CIRCLING		A			B		
R/W	Procedure	MDA QNH ft	MDH QFE ft	Vis m	MDA QNH ft	MDH QFE ft	Vis m
29	VOR	1060	1000	1500	1060	1000	1600
	Other procedures (1)	890	830	1500	890	830	1600

Notes:

(1) RNAV NA

TAKE-OFF		A		B	
Runway	Facilities	RVR	Vis	RVR	Vis
11/29	REDL and/or RCL	400	-	400	-
11/29	Nil (Day only)	500	-	500	-

Notes: