

MUHA

Airport information:

Country: Cuba

City: HABANA

Coordinates: N 22° 59.3', W 082° 24.6'

Elevation: 210

Customs: Customs

Fuel: 100, Jet A1

RFF: CAT 9

hours: H24

Runways:

Runway 06

Takeoff length: 4000, Landing length: 4000

Runway 24

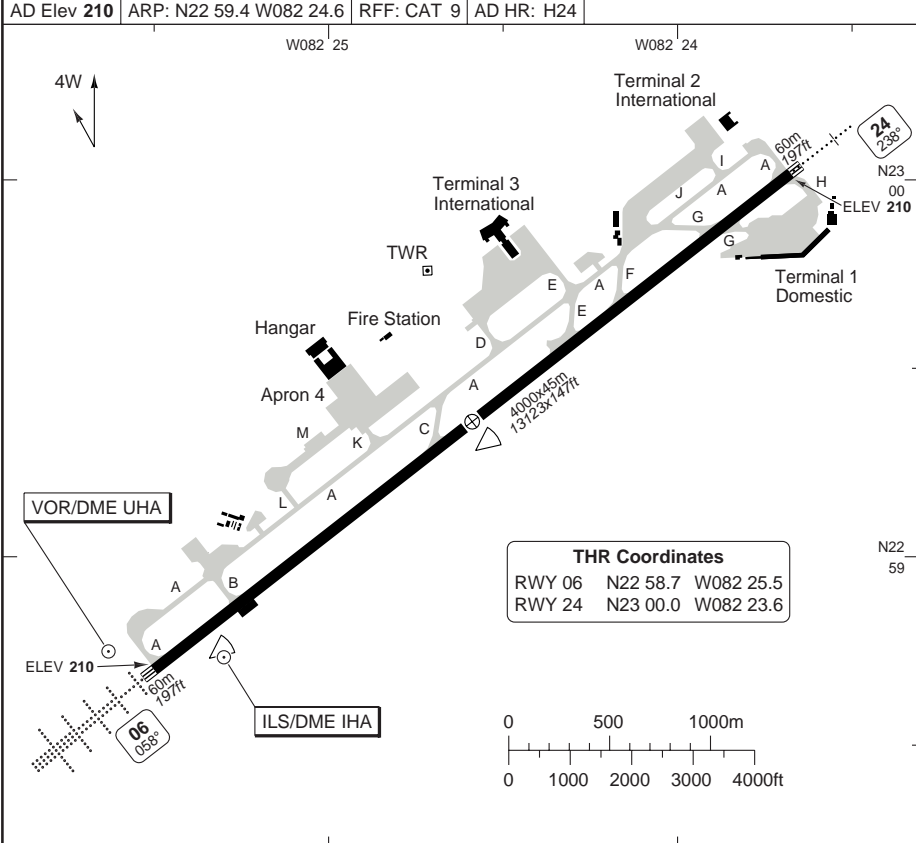
Takeoff length: 4000, Landing length: 4000

AERODROME

Jose Marti INTL HABANA

10 - 1

Marti GND 121.9 118.1	TWR 118.1	ATIS 132.5	
AD Elev 210	ARP: N22 59.4 W082 24.6	RFF: CAT 9	AD HR: H24



RWY	Slope	TORA m/ft	LDA m/ft	ALS	REDL	Additional
06	0	4000 / 13123	4000 / 13123	H-C	H	P 3° (64)
24	0	4000 / 13123	4000 / 13123	M-E ①	H	P 3° (84)

① 420m.

STATE		TAKE OFF MINIMA	
RWY	Facilities	CEL/VIS A B C D	
06	NIL (day only) or RCL (day only) or RCL + REDL	200 ft / 0.8 km	
24	NIL (day only) or RCL (day only) or RCL + REDL	400 ft / 2.0 km	

© Navtech - muha01aorg0

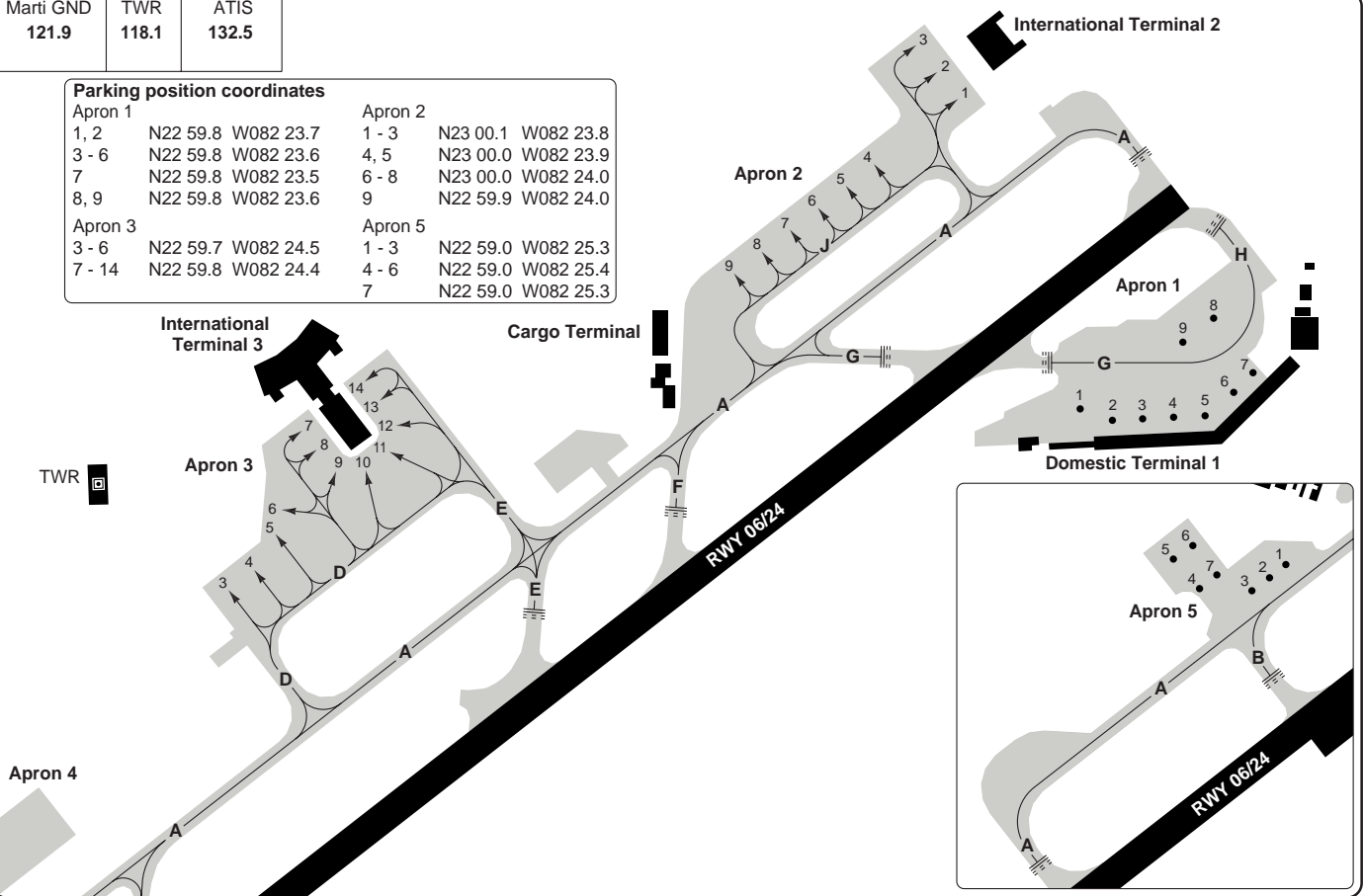
Change: IHA, TWY

THIS CHART IS A PART OF NAVIGRAPH NDAC AND IS INTENDED FOR FLIGHT SIMULATION USE ONLY

Marti GND 121.9	TWR 118.1	ATIS 132.5
--------------------	--------------	---------------

Parking position coordinates

Apron 1			
1, 2	N22 59.8	W082 23.7	
3 - 6	N22 59.8	W082 23.6	
7	N22 59.8	W082 23.5	
8, 9	N22 59.8	W082 23.6	
Apron 2			
1 - 3	N23 00.1	W082 23.8	
4, 5	N23 00.0	W082 23.9	
6 - 8	N23 00.0	W082 24.0	
9	N22 59.9	W082 24.0	
Apron 3			
3 - 6	N22 59.7	W082 24.5	
7 - 14	N22 59.8	W082 24.4	
Apron 5			
1 - 3	N22 59.0	W082 25.3	
4 - 6	N22 59.0	W082 25.4	
7	N22 59.0	W082 25.3	



GENERAL

GENERAL INFORMATION

1. WARNING

Do not mistake RWY 05 San Antonio for Habana RWY 06.
Bird concentration in vicinity of AD.

2. NOISE ABATEMENT PROCEDURE

APU is restricted before ascending at 2000ft.

3. TAXI

ACFT 25t or more not allowed to make 180° turns at beginning of RWY 24.

4. TRAFFIC NOTES

TKOF RWY 06: CAT C and D ACFT prohibited to make left turns.

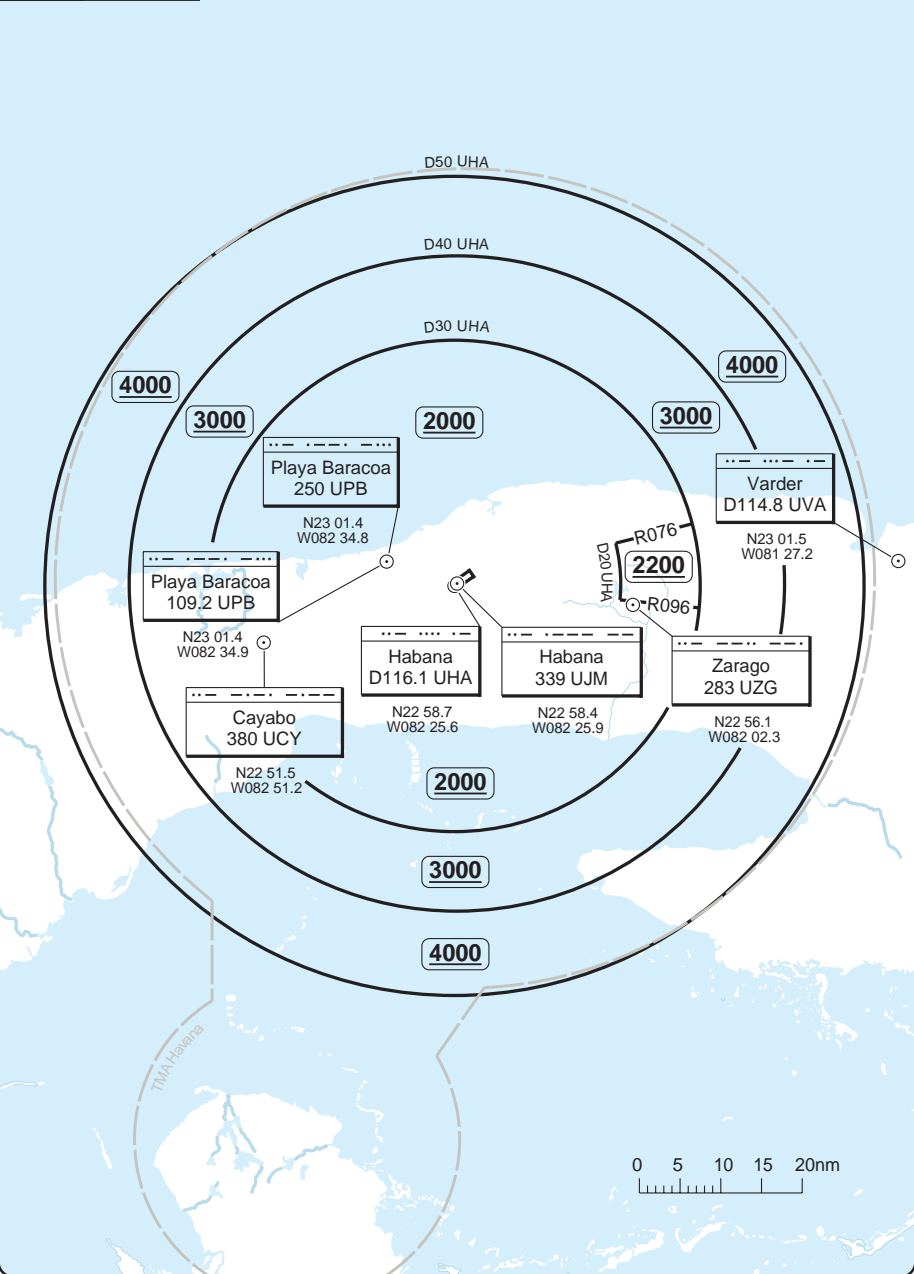
ARR: 20-40 min to ETA contact RADIO Boyeros 126.9 and state: ETA, POB, loads, mail and additional information.

10 - 3

RADAR Minimum Altitudes

Habana APP 120.3	TWR 118.1	GND 121.9 118.1	ATIS 132.5
----------------------------	---------------------	-------------------------------------	----------------------

TL ATC AD Elev 210



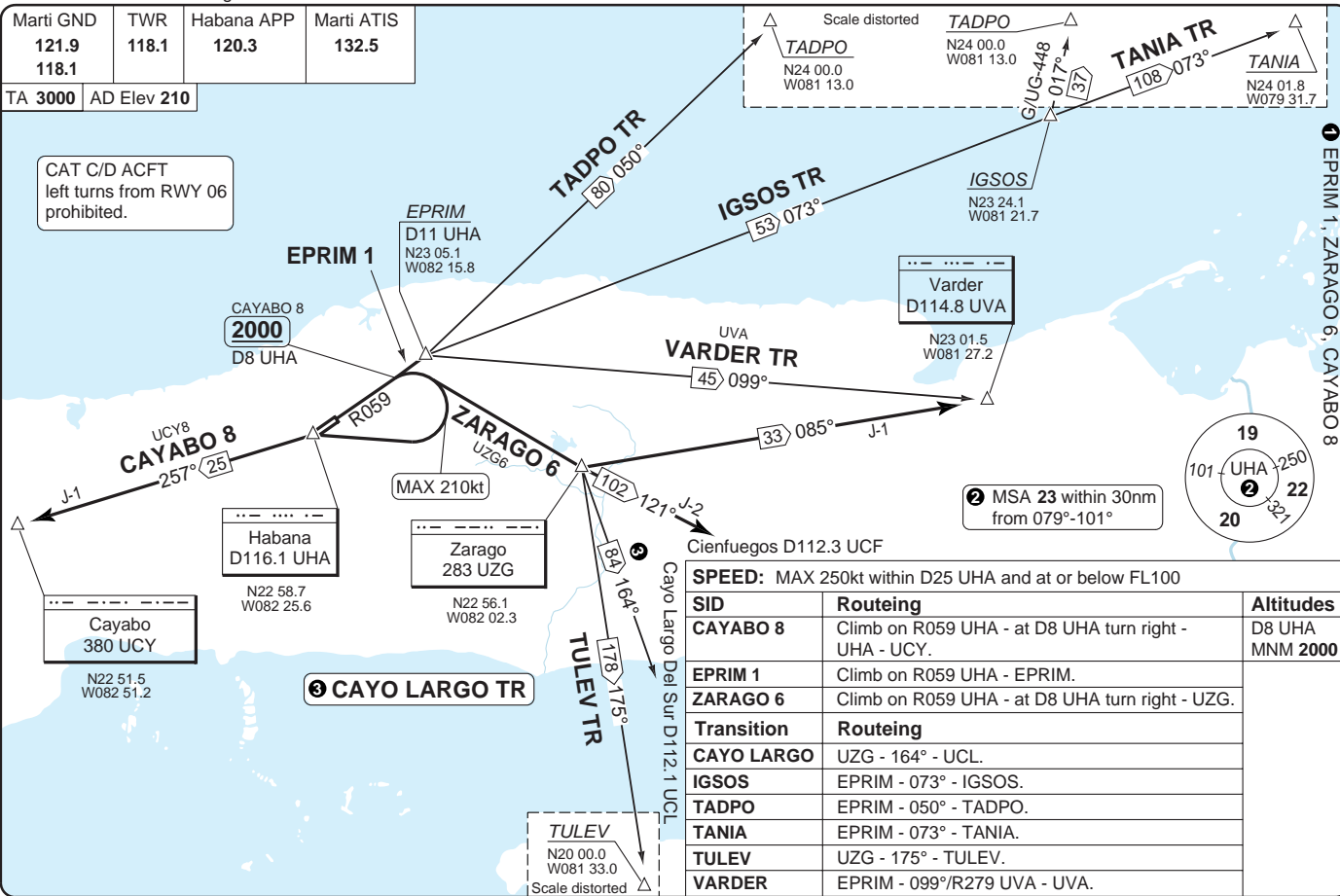
Change: COM, UJM, UCY

THIS CHART IS A PART OF NAVIGRAPH NDAC AND IS INTENDED FOR FLIGHT SIMULATION USE ONLY

Marti GND 121.9 118.1	TWR 118.1	Habana APP 120.3	Marti ATIS 132.5
---	---------------------	----------------------------	----------------------------

TA 3000 AD Elev 210

CAT C/D ACFT
left turns from RWY 06
prohibited.



Cienfuegos D112.3 UCF

SPEED: MAX 250kt within D25 UHA and at or below FL100

SID	Routeing	Altitudes
CAYABO 8	Climb on R059 UHA - at D8 UHA turn right - UHA - UCY.	D8 UHA MNM 2000
EPRIM 1	Climb on R059 UHA - EPRIM.	
ZARAGO 6	Climb on R059 UHA - at D8 UHA turn right - UZG.	
Transition	Routeing	
CAYO LARGO	UZG - 164° - UCL.	
IGSOS	EPRIM - 073° - IGSOS.	
TADPO	EPRIM - 050° - TADPO.	
TANIA	EPRIM - 073° - TANIA.	
TULEV	UZG - 175° - TULEV.	
VARDER	EPRIM - 099°/R279 UVA - UVA.	

SID RWY 06

30 - 1 | 11 JUL 12

Jose Marti INTL HABANA

Cuba - MUHA / HAV

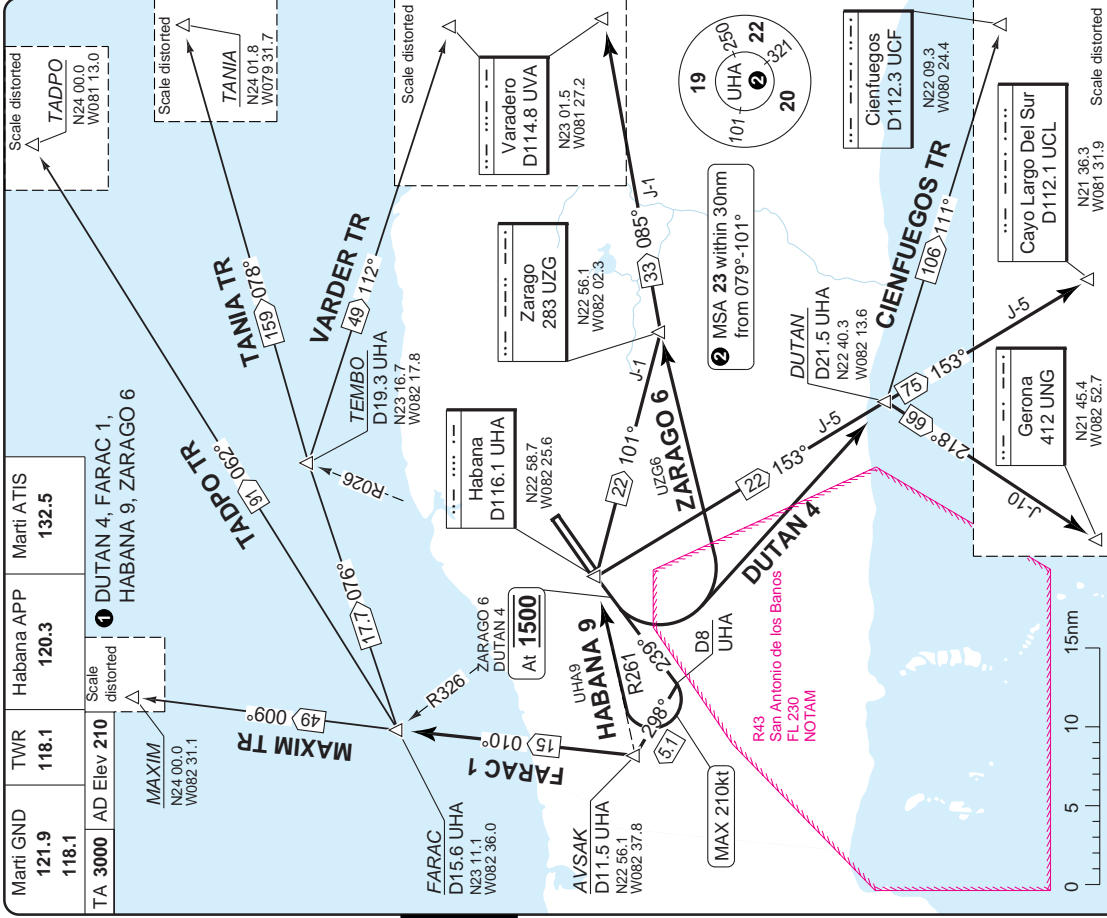
THIS CHART IS A PART OF NAVIGRAPH NDAC AND IS INTENDED FOR FLIGHT SIMULATION USE ONLY

Change: Completely revised

SID RWY 24

Marti GND	TWR	Habana APP	Marti ATIS
121.9	118.1	120.3	132.5
118.1			

TA 3000 AD Elev 210 Scale distorted
 MAXIM N24 00.0 W082 31.1
 ① DUTAN 4, FARAC 1, HABANA 9, ZARAGO 6

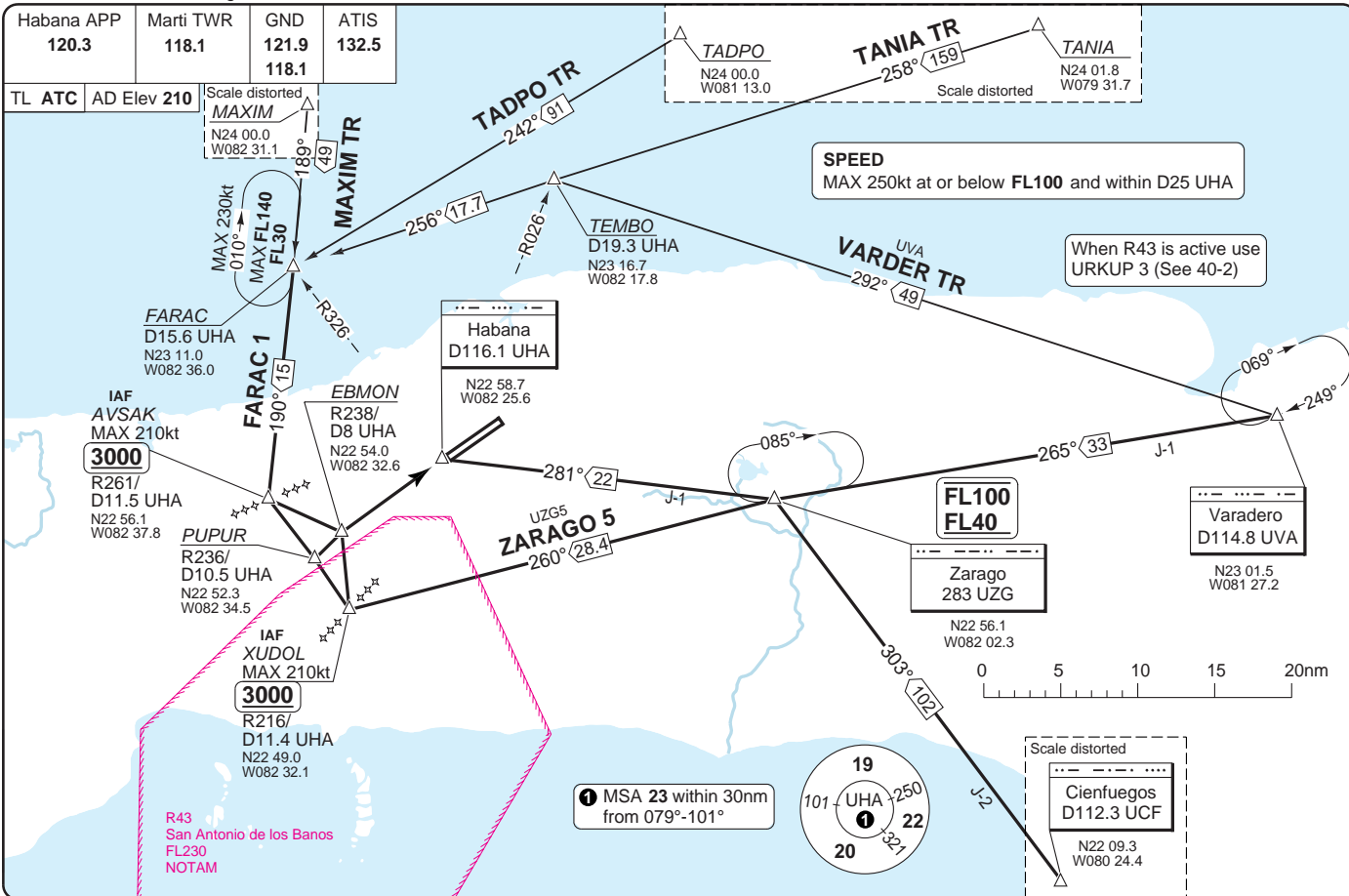


SID	Routeing
DUTAN 4	Climb on RWY HDG - at 1500 turn left - DUTAN.
FARAC 1	Climb on R239 UHA - at D8 UHA turn right - 298° - AVSAK - turn right on 010° - FARAC.
HABANA 9	Climb on R239 UHA - at D8 UHA turn right - intcp R261 UHA - UHA.
ZARAGO 6	Climb on 238° - at 1500 turn left - UZG.
Transition	Routeing
CIENFUEGOS	DUTAN - 112° - UCF.
MAXIM	FARAC - 009° - MAXIM.
TADPO	FARAC - 062° - TADPO.
TANIA	FARAC - 076° - TEMBO - 078° - TANIA.
VARDER	FARAC - 076° - TEMBO - 112°/R292 UVA - UVA.

Change: Completely revised

THIS CHART IS A PART OF NAVIGRAPH NDAC AND IS INTENDED FOR FLIGHT SIMULATION USE ONLY

THIS CHART IS A PART OF NAVIGRAPH NDAC AND IS INTENDED FOR FLIGHT SIMULATION USE ONLY



STAR RWY 06 FARAC 1, ZARAGO 5

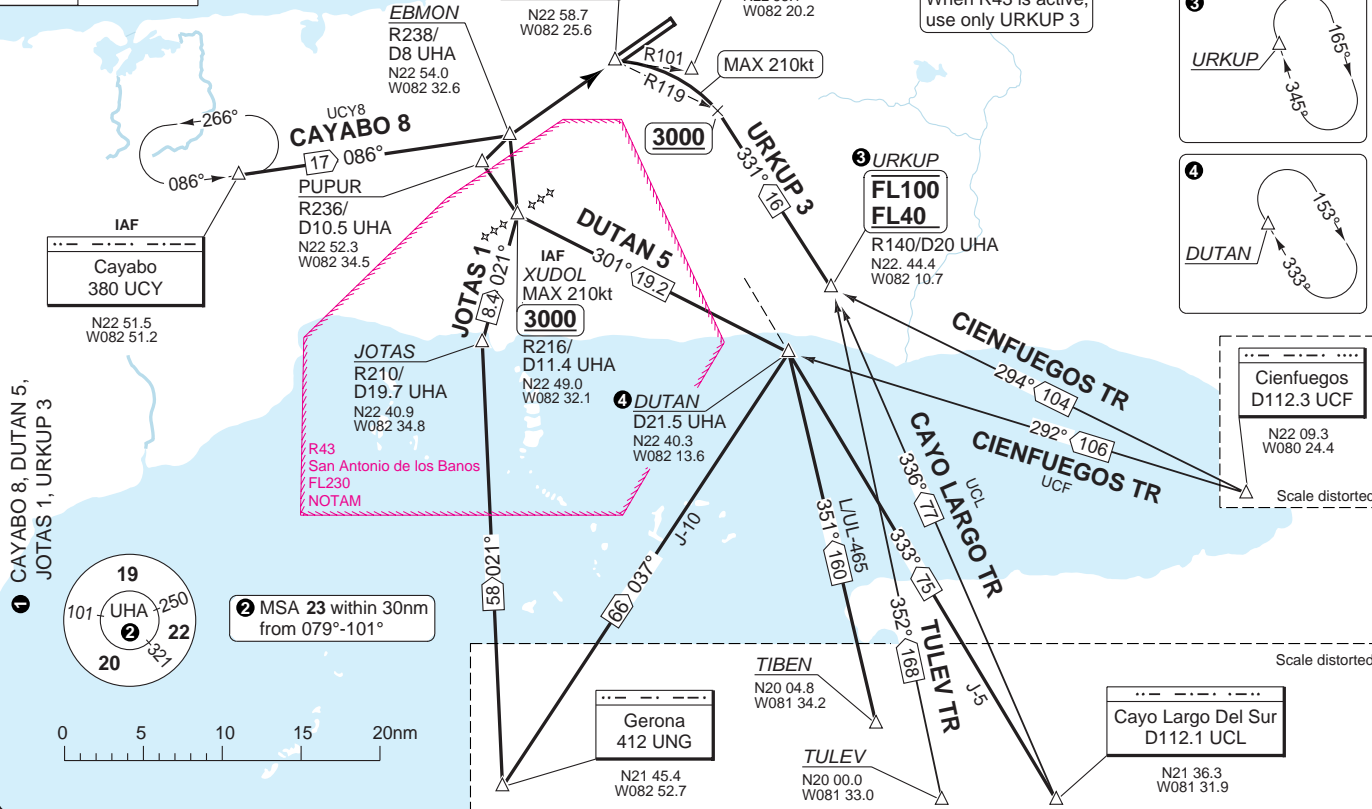
40 - 1 11 JUL 12

Jose Marti INTL HABANA

Cuba - MUHA / HAV

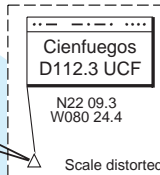
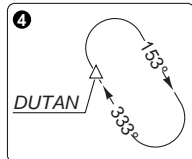
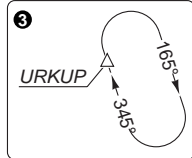
Habana APP 120.3	Marti TWR 118.1	GND 121.9 118.1	ATIS 132.5
---------------------	--------------------	-----------------------	---------------

TL ATC AD Elev 210



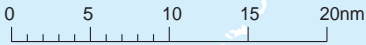
SPEED
MAX 250kt at or below FL100 and within D25 UHA

When R43 is active,
use only URKUP 3



Scale distorted

Scale distorted



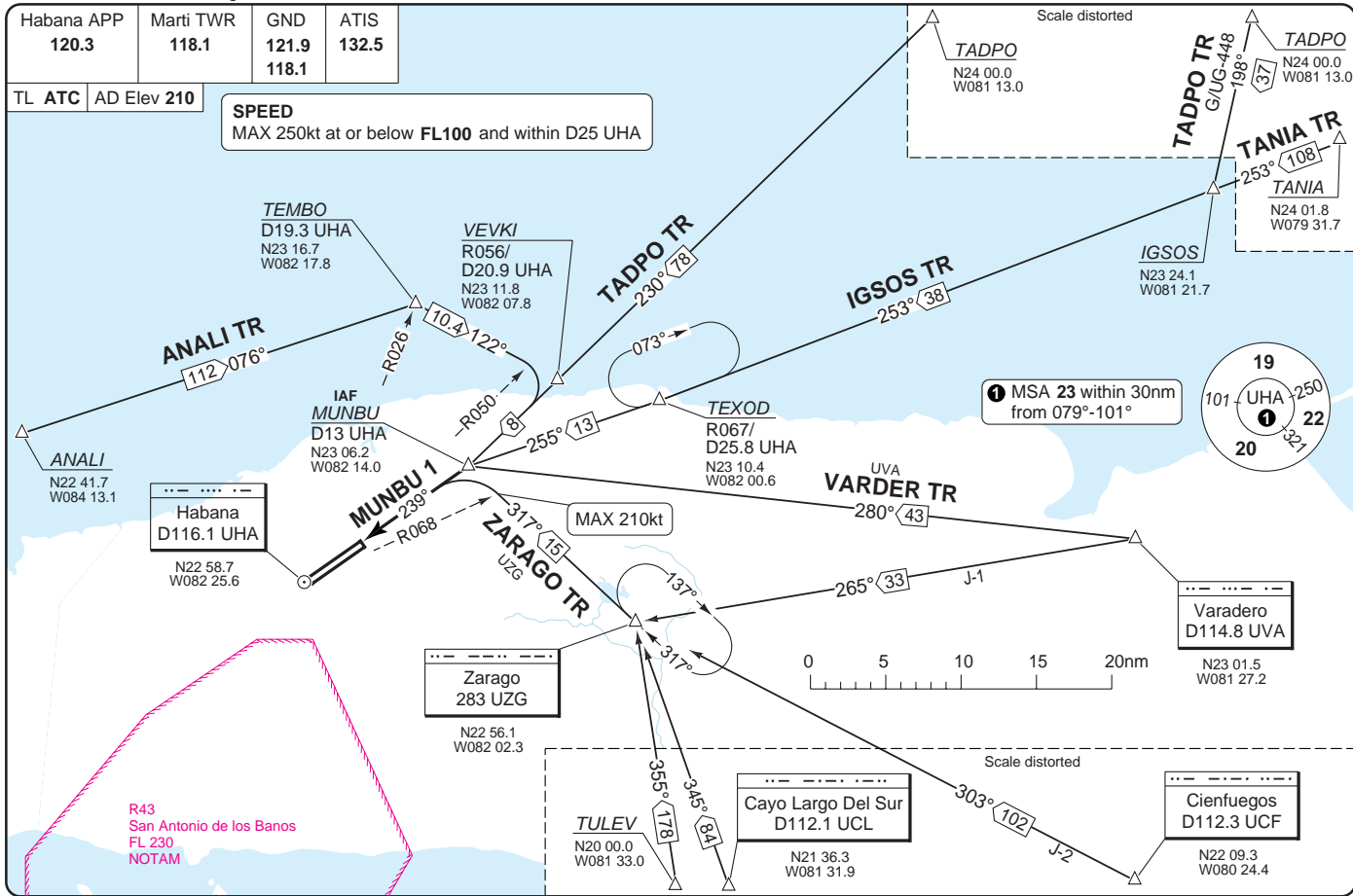
Habana APP 120.3	Marti TWR 118.1	GND 121.9 118.1	ATIS 132.5
---------------------	--------------------	-----------------------	---------------

TL ATC AD Elev 210

SPEED
MAX 250kt at or below FL100 and within D25 UHA

THIS CHART IS A PART OF NAVIGRAPH NDAC AND IS INTENDED FOR FLIGHT SIMULATION USE ONLY

Change: Completely revised



40 - 3 | 11 JUL 12

Jose Marti INTL HABANA

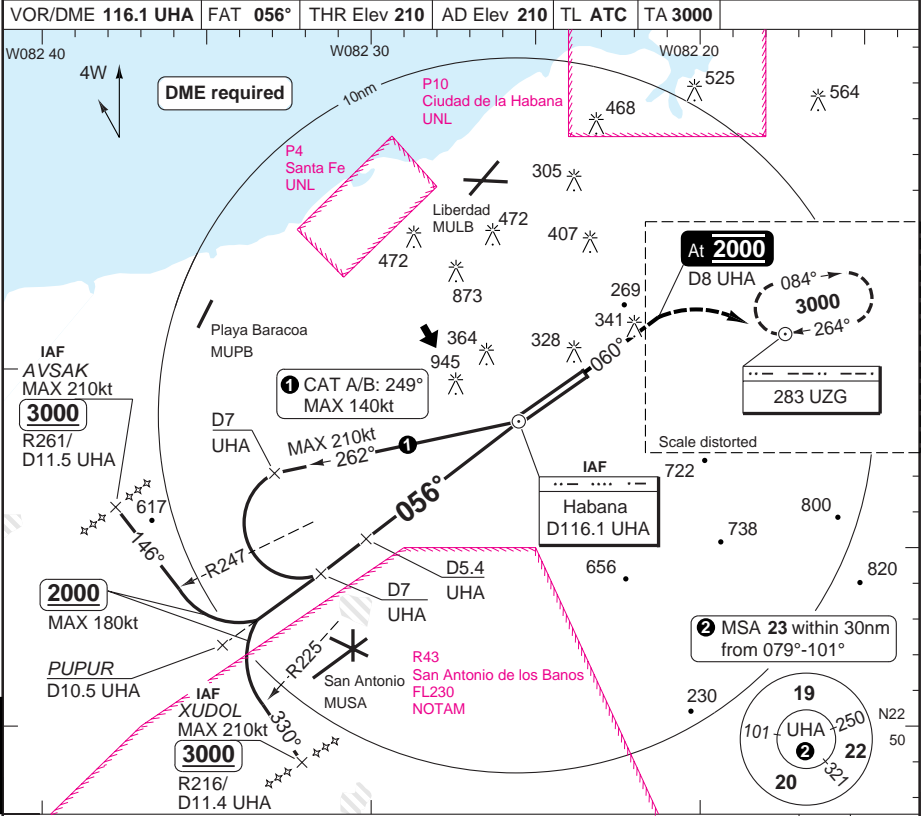
Cuba - MUHA / HAV

Reverse side blank

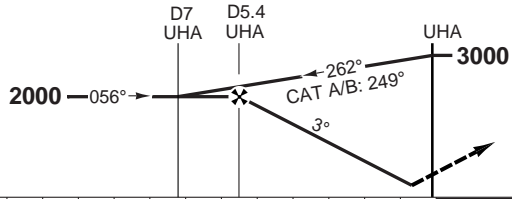
VOR RWY06

Jose Marti INTL HABANA

Habana APP 120.3	Marti TWR 118.1	GND 121.9 118.1	ATIS 132.5
VOR/DME 116.1 UHA	FAT 056°	THR Elev 210	AD Elev 210
TL ATC	TA 3000		



50 - 2



Climb on R060 **UHA** to **2000**. At D8 **UHA**, turn right to **UZG** and hold.

nm	13	12	11	10	9	8	7	6	5	4	3	2	1	0
ACFT	VOR+DME		Circling											
A			1170 (960) 2.8km											
B	610 (400) 2.0km													
C			1270 (1060) 4.8km											
D														
GS	80	100	120	140	160									
ROD 3.0°	420	530	640	740	850									
FAF-MAPt	3:18	2:38	2:12	1:53	1:39									

DME UHA	3.0° ALT	LDA 4000x45 13123x147ft P 3° (64)
5.4	2000	
5	1880	
4	1560	
3	1250	
2	930	
1	610	

FALS

© Navtech - muha02iaip00

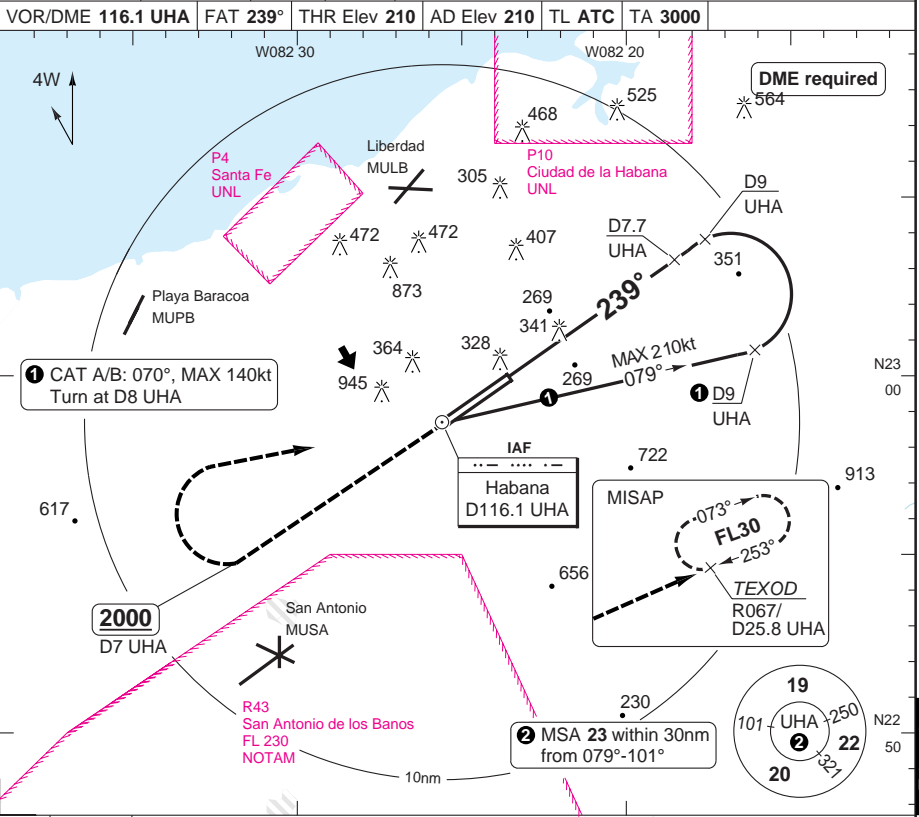
Change: Completely revised

THIS CHART IS A PART OF NAVIGRAPH NDAC AND IS INTENDED FOR FLIGHT SIMULATION USE ONLY

VOR RWY 24

Jose Marti INTL **HABANA**

Habana APP 120.3	Marti TWR 118.1	GND 121.9 118.1	ATIS 132.5
VOR/DME 116.1 UHA	FAT 239°	THR Elev 210	AD Elev 210
TL ATC		TA 3000	

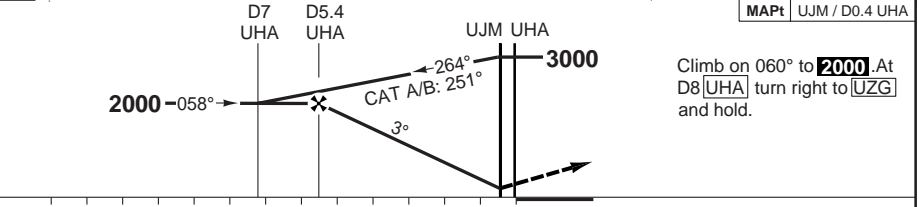
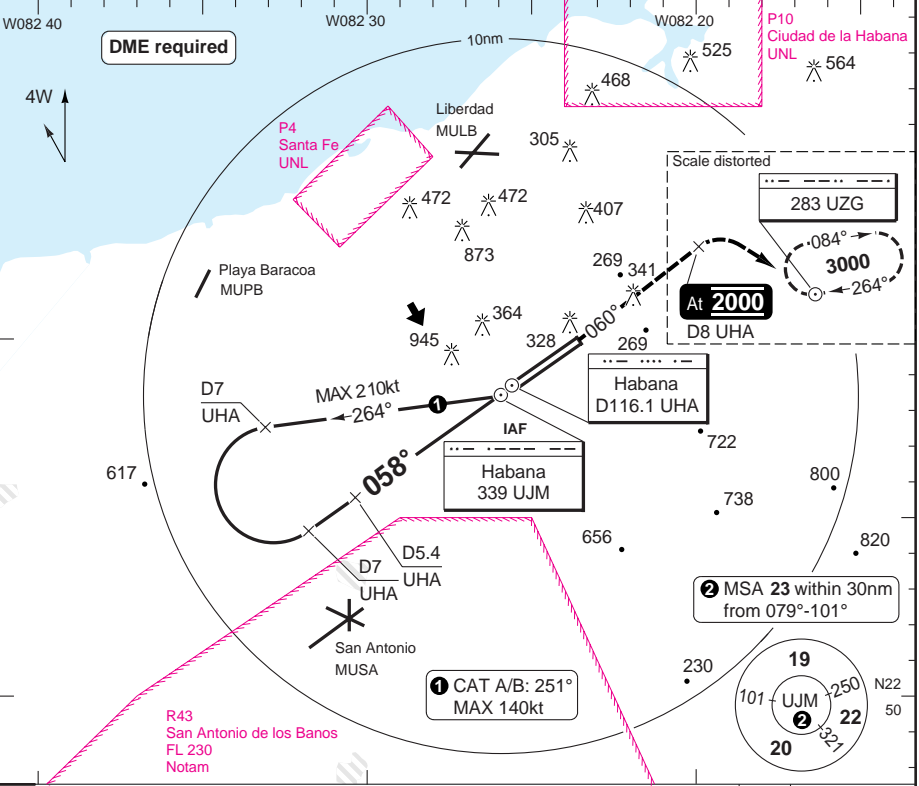


NDB RWY 06

Jose Marti INTL HABANA

Habana APP 120.3	Marti TWR 118.1	GND 121.9 118.1	ATIS 132.5
----------------------------	---------------------------	-------------------------------------	----------------------

NDB 339 UJM	FAT 058°	THR Elev 210	AD Elev 210	TL ATC	TA 3000
--------------------	-----------------	---------------------	--------------------	---------------	----------------



nm	13	12	11	10	9	8	7	6	5	4	3	2	1	0
ACFT	NDB+DME		Circling											
A	610 (400) 2.0km		1170 (960) 2.8km											
B			1270 (1060) 4.8km											
C														
D														
GS	80	100	120	140	160									
ROD 3.0°	420	530	640	740	850									
FAF-MAPt	3:45	3:00	2:30	2:09	1:52									
DME UHA	3.0° ALT	LDA 4000x45 13123x147ft P 3° (64)												
5.4	2000	<p>FALS</p>												
5	1880													
4	1560													
3	1250													
2	930													
1	610													

© Navtech - muha04iaip00

Change: Completely revised

THIS CHART IS A PART OF NAVIGRAPH NDAC AND IS INTENDED FOR FLIGHT SIMULATION USE ONLY

JAR-OPS Landing Minima

Jose Marti INTL **HABANA**

The following Minima is for Public Transport aircraft and conforms to JAR-OPS1 regulations.

STRAIGHT-IN APPROACH		C				D			
R/W	Procedure	DA/ MDA QNH ft	DH/ MDH QFE ft	Vis m	Vis No ALS m	DA/ MDA QNH ft	DH/ MDH QFE ft	Vis m	Vis No ALS m
06	ILS	410	200	800	1000	410	200	800	1000
06	LOC	610	400	2000	2000	610	400	2000	2000
06	VOR/DME	610	400	2000	2000	610	400	2000	2000
06	NDB/DME	610	400	2000	2000	610	400	2000	2000
24	VOR/DME	610	400	2000	2000	610	400	2000	2000

Notes:

CIRCLING		C			D		
R/W	Procedure	MDA QNH ft	MDH QFE ft	Vis m	MDA QNH ft	MDH QFE ft	Vis m
All procedures		1270	1060	4800	1270	1060	4800

Notes:

TAKE-OFF		C		D	
Runway	Facilities	RVR	Vis	RVR	Vis
06 (1)	-	-	800	-	800
24 (2)	-	-	2000	-	2000

Notes:

- (1) Ceil 200ft.
- (2) Ceil 400ft.

JAR-OPS Landing Minima

Jose Marti INTL **HABANA**

The following Minima is for Public Transport aircraft and conforms to JAR-OPS1 regulations.

STRAIGHT-IN APPROACH		A				B			
R/W	Procedure	DA/ MDA QNH ft	DH/ MDH QFE ft	Vis m	Vis No ALS m	DA/ MDA QNH ft	DH/ MDH QFE ft	Vis m	Vis No ALS m
06	ILS	410	200	800	1000	410	200	800	1000
06	LOC	610	400	2000	2000	610	400	2000	2000
06	VOR/DME	610	400	2000	2000	610	400	2000	2000
06	NDB/DME	610	400	2000	2000	610	400	2000	2000
24	VOR/DME	610	400	2000	2000	610	400	2000	2000

Notes:

CIRCLING		A			B		
R/W	Procedure	MDA QNH ft	MDH QFE ft	Vis m	MDA QNH ft	MDH QFE ft	Vis m
All procedures		1170	960	2800	1170	960	2800

Notes:

TAKE-OFF		A		B	
Runway	Facilities	RVR	Vis	RVR	Vis
06 (1)	-	-	800	-	800
24 (2)	-	-	2000	-	2000

Notes:

(1) Ceil 200ft.

(2) Ceil 400ft.