

## Airport information:

Country: Haiti

City: PORT AU PRINCE

Coordinates: N 18° 34.8', W 072° 17.6'

Elevation: 122

Customs: Customs

Fuel: 100LL, Jet A1

RFF: CAT 8

hours: 0600-2200

## Runways:

Runway 10

Takeoff length: 3040, Landing length: 3040

Runway 28

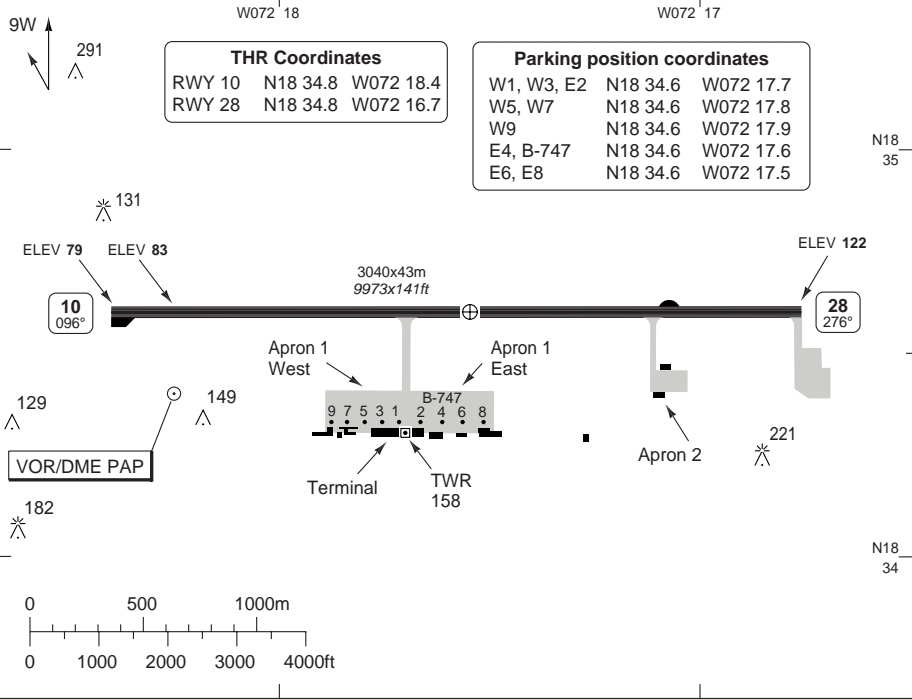
Takeoff length: 3040, Landing length: 3040

# AERODROME

# INTL PORT AU PRINCE

Port au Prince TWR  
**118.3**

AD Elev **122** | ARP: N18 34.8 W072 17.6 | RFF: CAT 8 | AD HR: 06-22



THR Coordinates			
RWY 10	N18 34.8	W072 18.4	
RWY 28	N18 34.8	W072 16.7	

Parking position coordinates			
W1, W3, E2	N18 34.6	W072 17.7	
W5, W7	N18 34.6	W072 17.8	
W9	N18 34.6	W072 17.9	
E4, B-747	N18 34.6	W072 17.6	
E6, E8	N18 34.6	W072 17.5	

RWY	Slope	TORA m/ft	LDA m/ft	ALS	REDL	Additional
10	+0.4	3040 / 9973	3040 / 9973	-	H ①	P 3° L/R
28	-0.4	3040 / 9973	3040 / 9973	-	H ①	P 3° L/R

① White.

EU OPS		TAKE OFF MINIMA	
RWY	Facilities	RVR A B C D	
10/28	RCL (day only) or RCL + REDL	400m	
	NIL (day only)	500m	

### GENERAL INFORMATION

**WARNING**  
Birds in vicinity of AD.

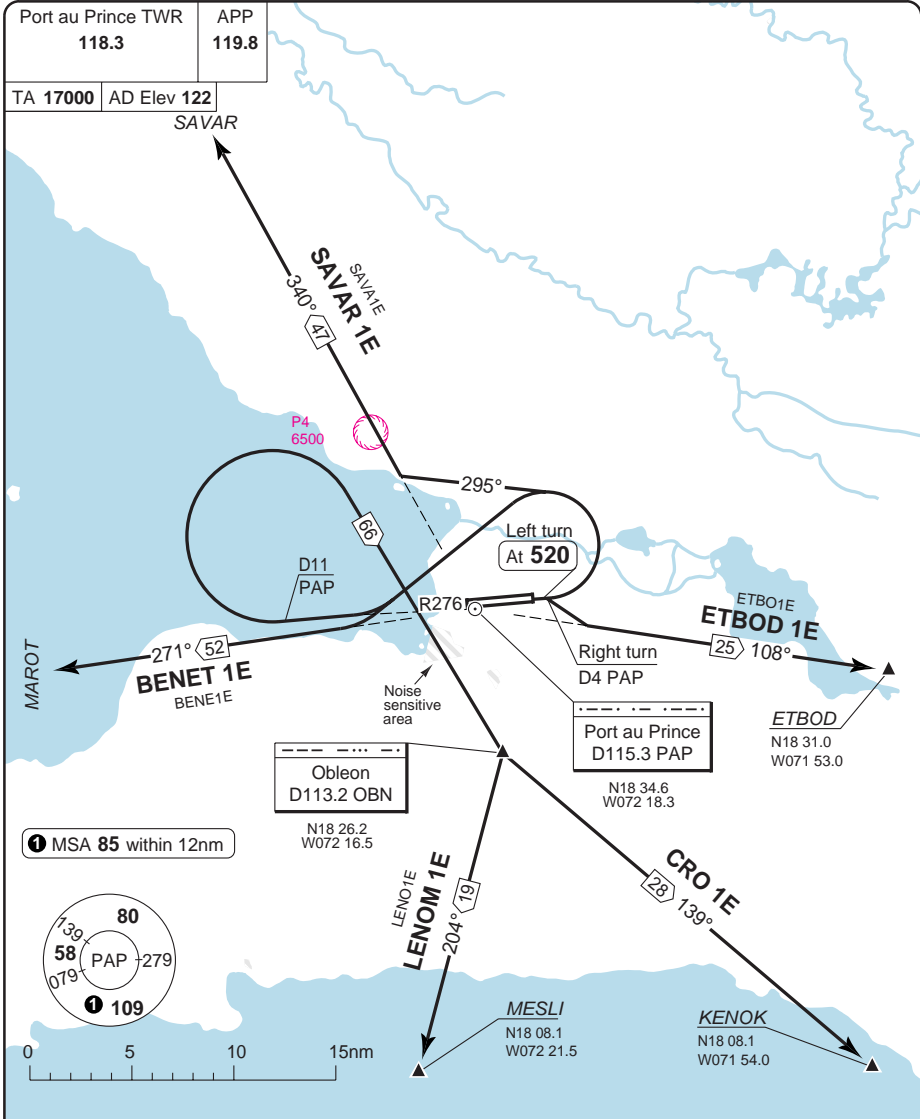
© Navitech - mtp01aorg0

Reverse side blank

Change: New spec.

# SID RWY 10

# INTL PORT AU PRINCE



**SPEED:** SAVAR 1E, initial turn MAX 205kt.  
**ALT RESTRICTION:** Cross Port au Prince City MNM 8000.

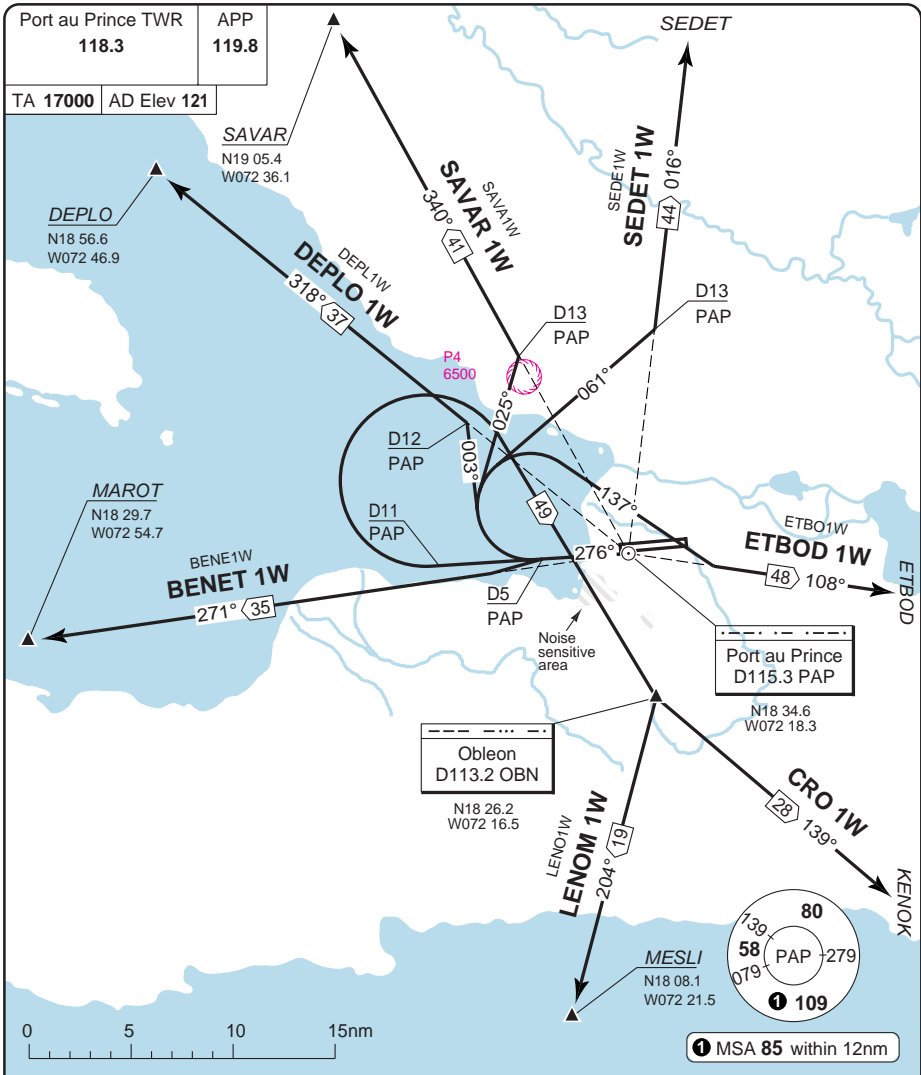
SID	MNM Climb	Routeing
BENET 1E	4%	R096 PAP- At 520 turn left - R271 PAP - MAROT
CRO 1E	6%	R096 PAP- At 520 turn left - R276 PAP - at D11 PAP turn right - OBN - R139 OBN - KENOK
ETBOD 1E	4%	R096 PAP- at D4 PAP turn right - R108 PAP - ETBOD
LENOM 1E	6%	R096 PAP- At 520 turn left - R276 PAP - D11 PAP turn right - OBN - R204 OBN - MESLI
SAVAR 1E	6%	R096 PAP- At 520 turn left HDG 295° - R340 PAP - SAVAR

Change: New spec.

**THIS CHART IS A PART OF NAVIGRAPH NDAC AND IS INTENDED FOR FLIGHT SIMULATION USE ONLY**

# SID RWY 28

# INTL PORT AU PRINCE



**SPEED:** BENET 1W, DEPLO 1W, ETBOD 1W, SAVAR 1W, SEDET 1W: Initial turn MAX 240kt.

**ALT RESTRICTION:** Cross Port au Prince City MNM 8000.

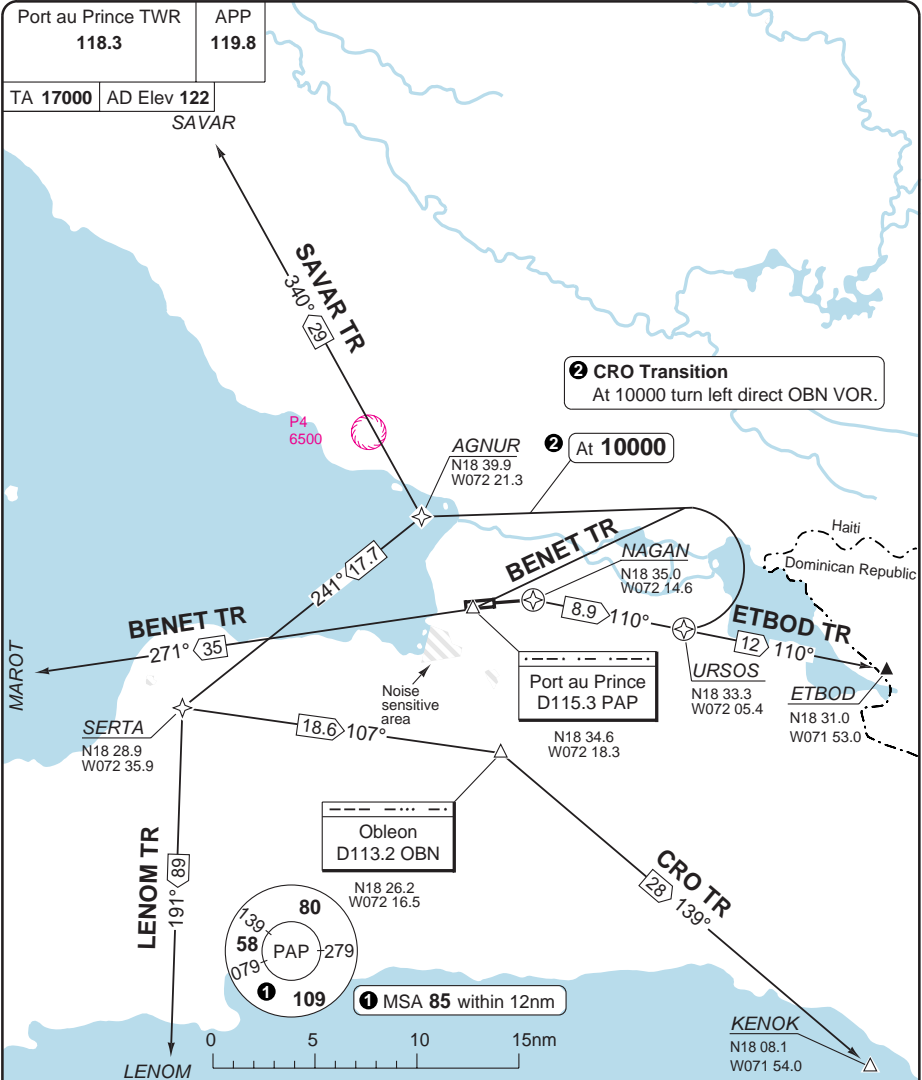
SID	MNM Climb	Routing
<b>BENET 1W</b>	4%	R276 PAP- at D5 PAP turn left - R271 PAP - MAROT
<b>CRO 1W</b>	6%	R276 PAP- at D11 PAP turn right - OBN - R139 OBN - KENOK
<b>DEPLO 1W</b>		R276 PAP- at D5 PAP turn right HDG 003° - R318 PAP - DEPLO
<b>ETBOD 1W</b>	5%	R276 PAP- at D5 PAP turn right HDG 137° - R108 PAP - ETBOD
<b>LENOM 1W</b>	6%	R276 PAP- at D11 PAP turn right - OBN - R204 OBN - MESLI
<b>SAVAR 1W</b>	5%	R276 PAP- at D5 PAP turn right HDG 025° - R340 PAP - SAVAR
<b>SEDET 1W</b>	5.5%	R276 PAP- at D5 PAP turn right HDG 061° - R016 PAP - SEDET

Change: New spec.

**THIS CHART IS A PART OF NAVIGRAPH NDAC AND IS INTENDED FOR FLIGHT SIMULATION USE ONLY**

SID RWY 10 **RNAV** GPS

INTL PORT AU PRINCE



**SPEED:** BENET: MAX 220kt until PAP. CRO, LENOM, SAVAR: MAX 220kt until AGNUR.

**INITIAL CLIMB:** Climb on 096° to NAGAN - follow TR.

TR	MNM Climb	Routeing
BENET	5.2% to 4200	URSOS - turn left - PAP - MAROT
CRO	5.2% to 4200	URSOS - turn left inbound AGNUR - at 10000 turn left OBN - KENOK
ETBOD	3.3%	URSOS - ETBOD
LENOM	5.2% to 4200	URSOS - turn left - AGNUR - SERTA - LENOM
SAVAR	5.2% to 4200	URSOS - turn left - AGNUR - SAVAR

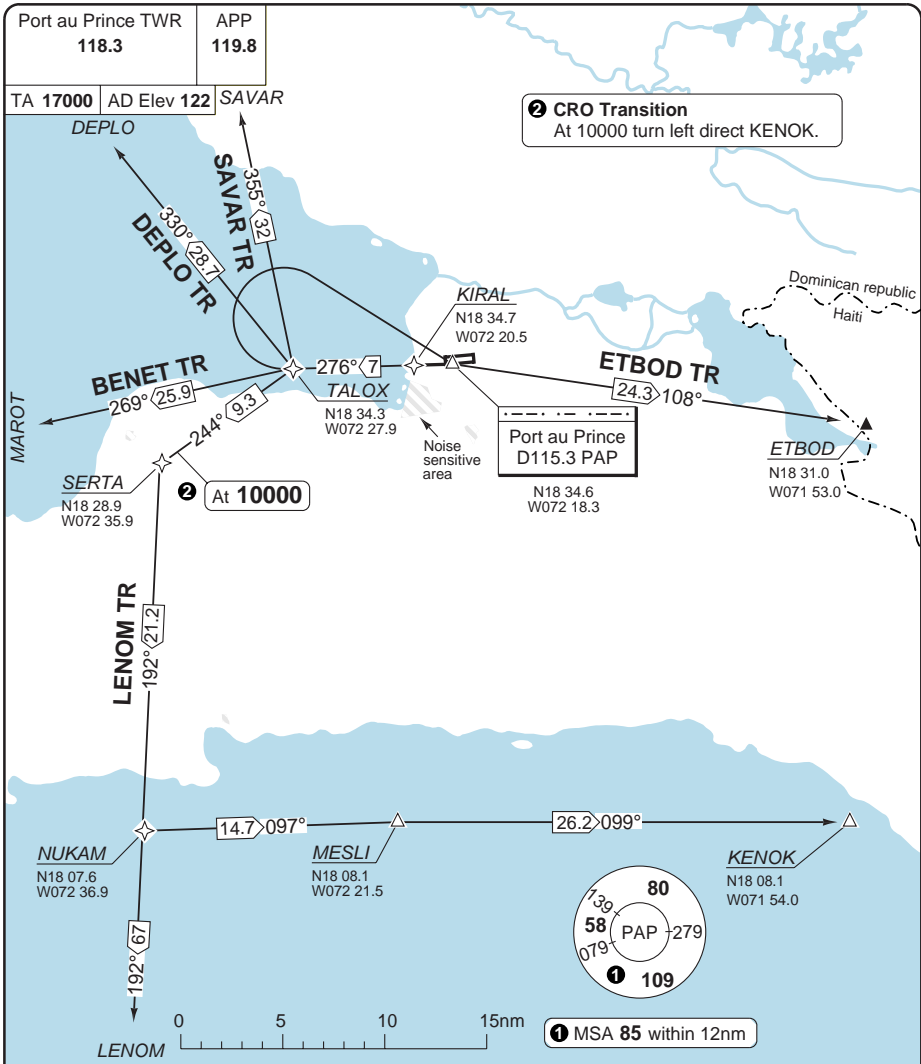
© Navitech - mtp03daorg0

Change: New

**THIS CHART IS A PART OF NAVIGRAPH NDAC AND IS INTENDED FOR FLIGHT SIMULATION USE ONLY**

SID RWY 28 **RNAV** GPS

INTL PORT AU PRINCE



**INITIAL CLIMB:** Climb on 276° to KIRAL - follow TR.

TR	MNM Climb	Routeing
BENET	3.3%	TALOX - turn left - MAROT
CRO	3.3%	TALOX - turn left inbound SERTA - at 10000 turn left - KENOK
DEPLO	3.3%	TALOX - turn right - DEPLO
ETBOD	3.3%	TALOX - turn right - PAP - ETBOD
LENOM	3.3%	TALOX - turn left - SERTA - NUKAM - LENOM
SAVAR	4.1% to 6900	TALOX - turn right - SAVAR

© Navitech - mtpp04daorg0

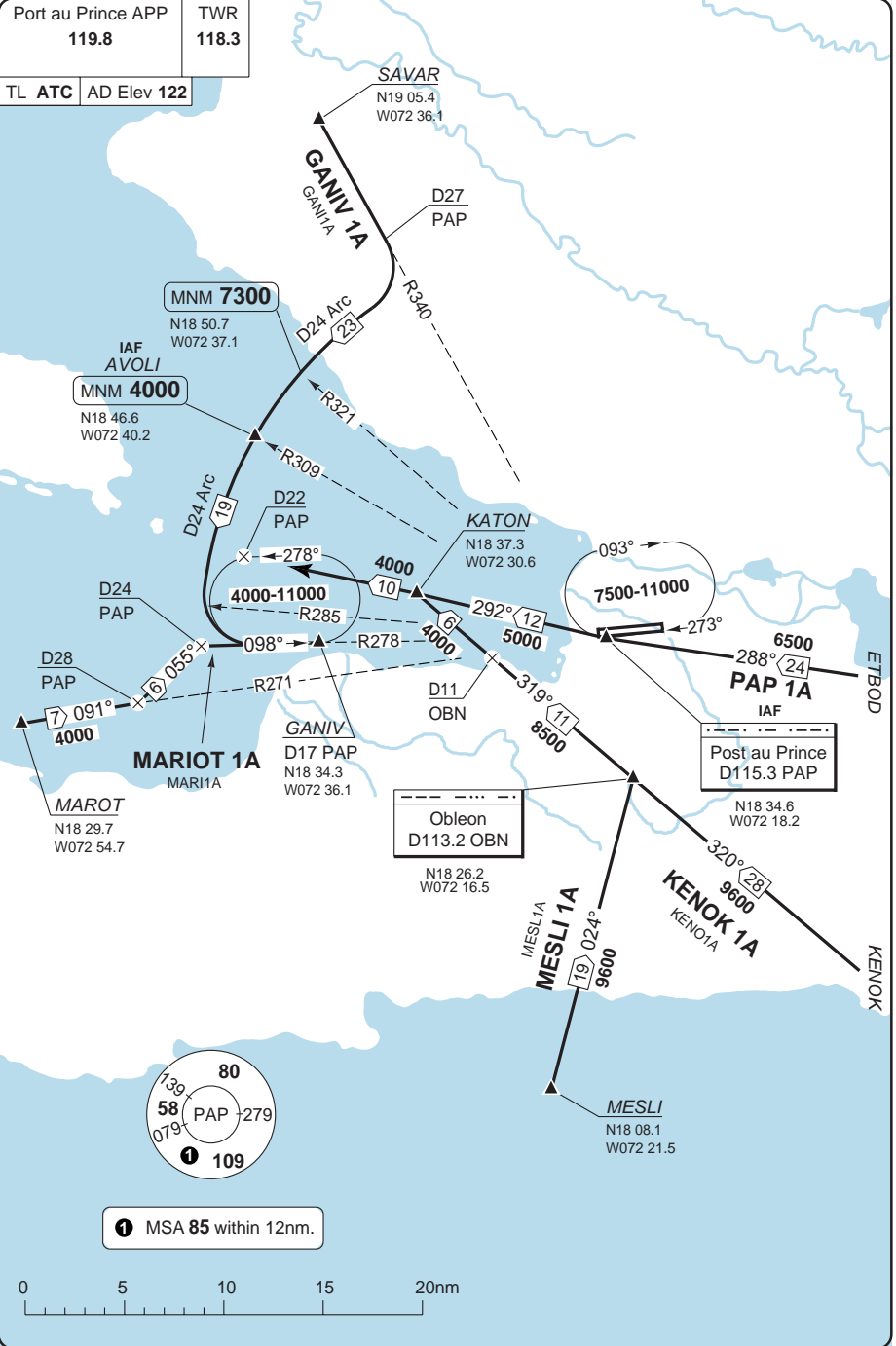
Change: New

# STAR

# INTL PORT AU PRINCE

Port au Prince APP <b>119.8</b>	TWR <b>118.3</b>
------------------------------------	---------------------

TL ATC AD Elev 122



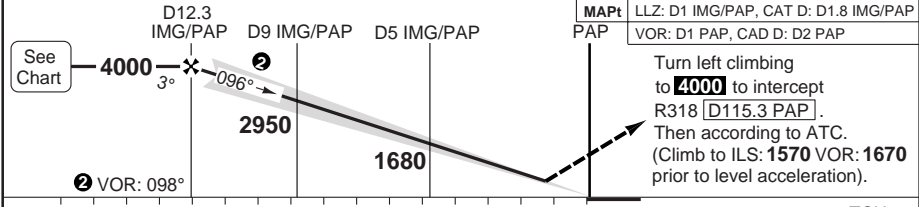
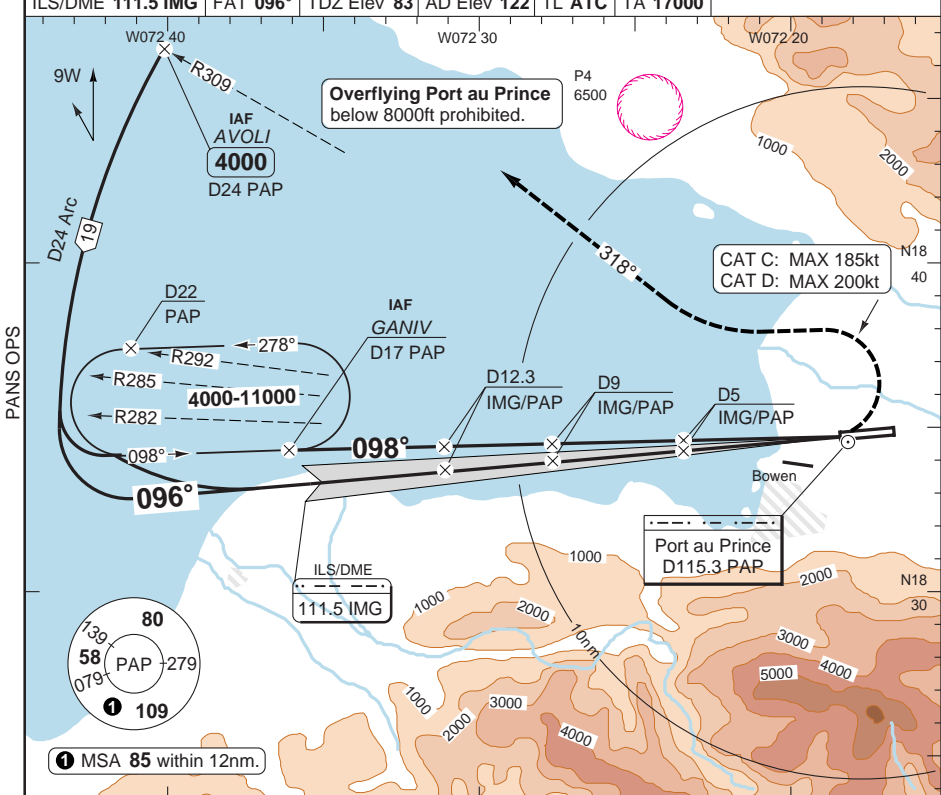
Reverse side blank

Change: New spec.

**THIS CHART IS A PART OF NAVIGRAPH NDAC AND IS INTENDED FOR FLIGHT SIMULATION USE ONLY**

ILS OR VOR RWY 10 ILS/DME, VOR/DME INTL PORT AU PRINCE

Port au Prince APP <b>119.8</b>	TWR <b>118.3</b>				
ILS/DME <b>111.5 IMG</b>	FAT <b>096°</b>	TDZ Elev <b>83</b>	AD Elev <b>122</b>	TL <b>ATC</b>	TA <b>17000</b>



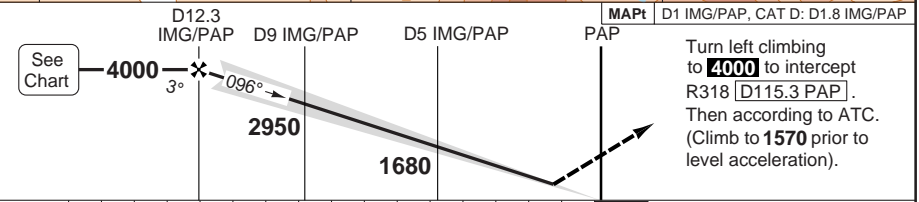
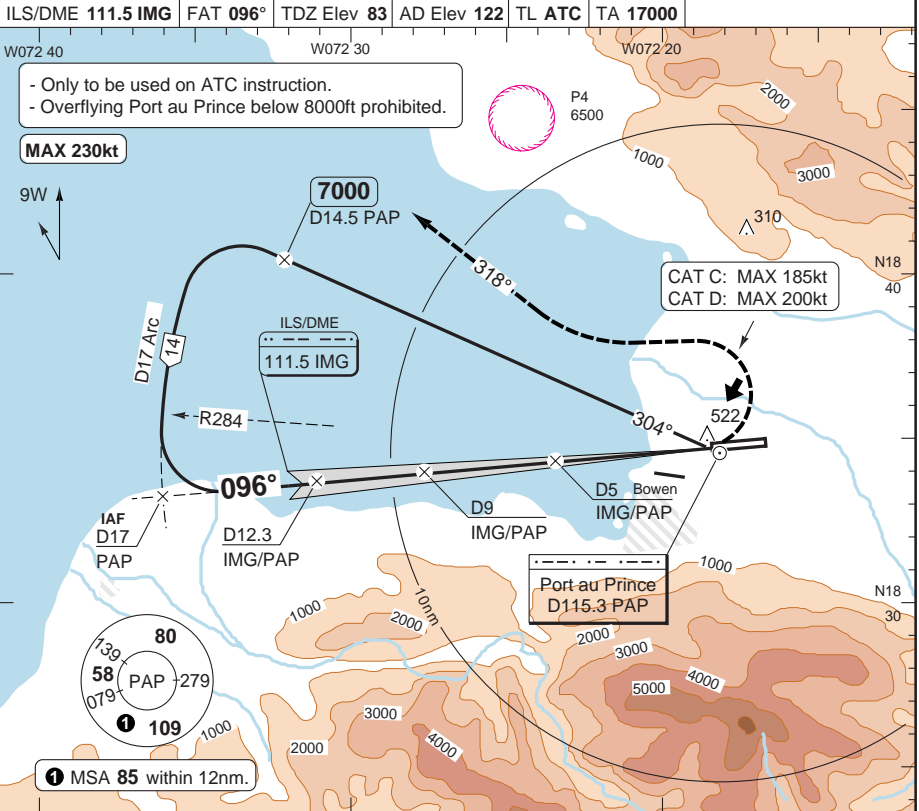
nm	16	15	14	13	12	11	10	9	8	7	6	5	4	3	2	1	0	TCH 58
ACFT	<b>ILS+DME</b>	<b>LLZ+DME</b>	<b>VOR+DME</b>	<b>Circling (b)</b>														
A/B	<b>530</b> (442) 1500m (a)	<b>530</b> (442) 1500m (a)	<b>530</b> (442) 1500m (a)	<b>850</b> (720) 1.6km (c)														
C	<b>540</b> (452) 2100m	<b>540</b> (452) 2100m	<b>540</b> (452) 2100m	<b>950</b> (820) 2.4km														
D	<b>570</b> (486) 2300m	<b>650</b> (565) 2400m	<b>720</b> (636) 2400m	<b>1140</b> (1016) 3.6km														
					(a) CAT A: <b>520</b> (432) 1500m (b) North of AD (c) CAT A: <b>660</b> (533) 1.5km				DME 3.0° ALT 12.2 <b>4000</b> 9 <b>2970</b> 7 <b>2330</b> 5 <b>1680</b> 4 <b>1360</b> 3 <b>1040</b> 2.0 <b>720</b> 1.8 <b>650</b>					LDA 3040x43 9973x141ft P 3° L/R				
GS	100	120	140	160														
ROD 3.0°	540	650	760	870														

© Navtech - mtp001iaip00

ILS RWY 10 ILS/DME

INTL PORT AU PRINCE

Port au Prince APP <b>119.8</b>	TWR <b>118.3</b>				
ILS/DME <b>111.5 IMG</b>	FAT <b>096°</b>	TDZ Elev <b>83</b>	AD Elev <b>122</b>	TL ATC	TA <b>17000</b>



nm	16	15	14	13	12	11	10	9	8	7	6	5	4	3	2	1	0	TCH 58
----	----	----	----	----	----	----	----	---	---	---	---	---	---	---	---	---	---	--------

ACFT	ILS+DME	LLZ+DME	Circling <b>(b)</b>
A/B	<b>530</b> (442) 1500m <b>(a)</b>	<b>530</b> (442) 1500m <b>(a)</b>	<b>850</b> (720) 1.6km <b>(c)</b>
C	<b>540</b> (452) 2100m	<b>540</b> (452) 2100m	<b>950</b> (820) 2.4km
D	<b>570</b> (486) 2300m	<b>650</b> (565) 2400m	<b>1140</b> (1016) 3.6km

DME	3.0° ALT
12.2	<b>4000</b>
10	<b>3290</b>
7	<b>2330</b>
5	<b>1680</b>
4	<b>1360</b>
3	<b>1040</b>
2	<b>710</b>
1.8	<b>650</b>

LDA 3040x43  
9973x141ft  
P 3° L/R

	<b>(a)</b> CAT A: <b>520</b> (432) 1500m
	<b>(b)</b> North of AD
	<b>(c)</b> CAT A: <b>660</b> (533) 1.5km
GS	100 120 140 160
ROD 3.0°	540 650 760 870

© Navtech - mtp02iaip00  
EU OPS

NALS

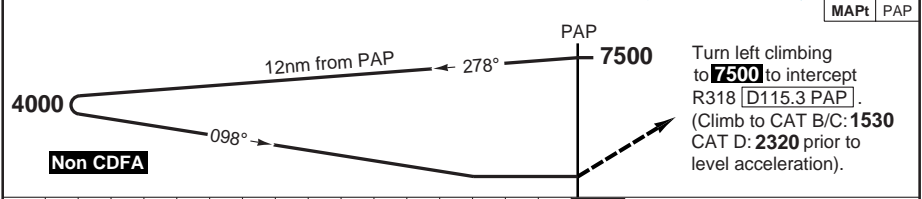
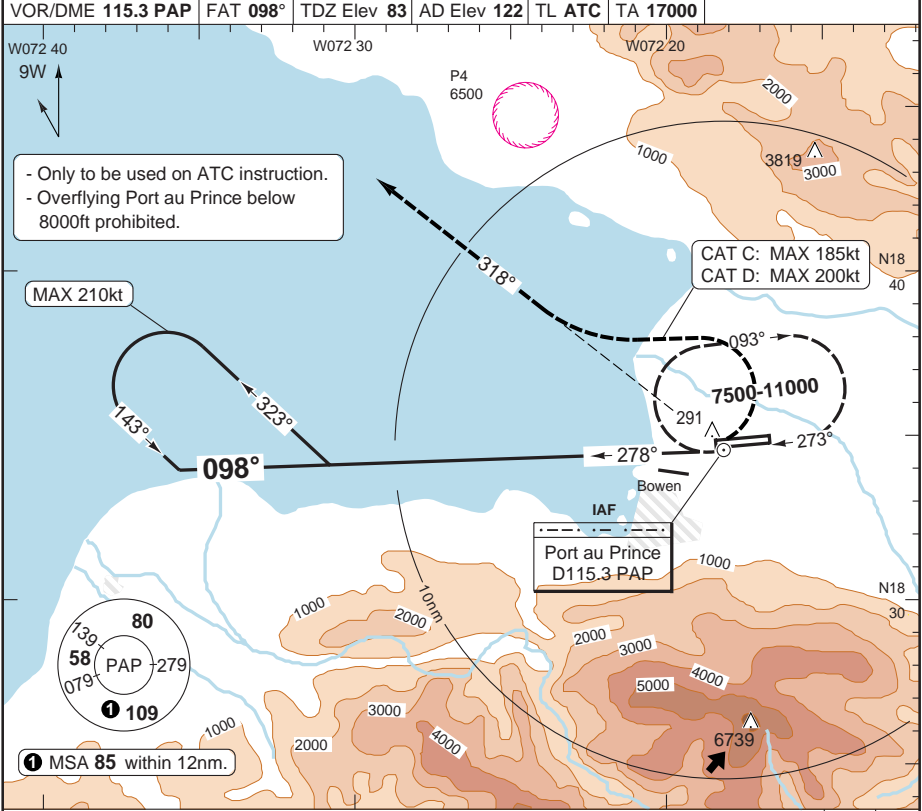
Change: New spec.

**THIS CHART IS A PART OF NAVIGRAPH NDAC AND IS INTENDED FOR FLIGHT SIMULATION USE ONLY**

# VOR RWY 10

# INTL PORT AU PRINCE

Port au Prince APP <b>119.8</b>	TWR <b>118.3</b>				
VOR/DME <b>115.3 PAP</b>	FAT <b>098°</b>	TDZ Elev <b>83</b>	AD Elev <b>122</b>	TL ATC	TA <b>17000</b>



nm	16	15	14	13	12	11	10	9	8	7	6	5	4	3	2	1	0
ACFT	VOR		Circling <b>a</b>		<b>a</b> North of AD												
A/B	780 (688) 3400m		850 (720) 3.4km <b>b</b>		<b>b</b> CAT A: 780 (649) 3.4km												
C	780 (688) 3600m		950 (820) 3.6km														
D	1290 (1207) 5000m		1290 (1168) 5.0km														

LD A 3040x43  
9973x141ft  
P 3° L/R

NALS

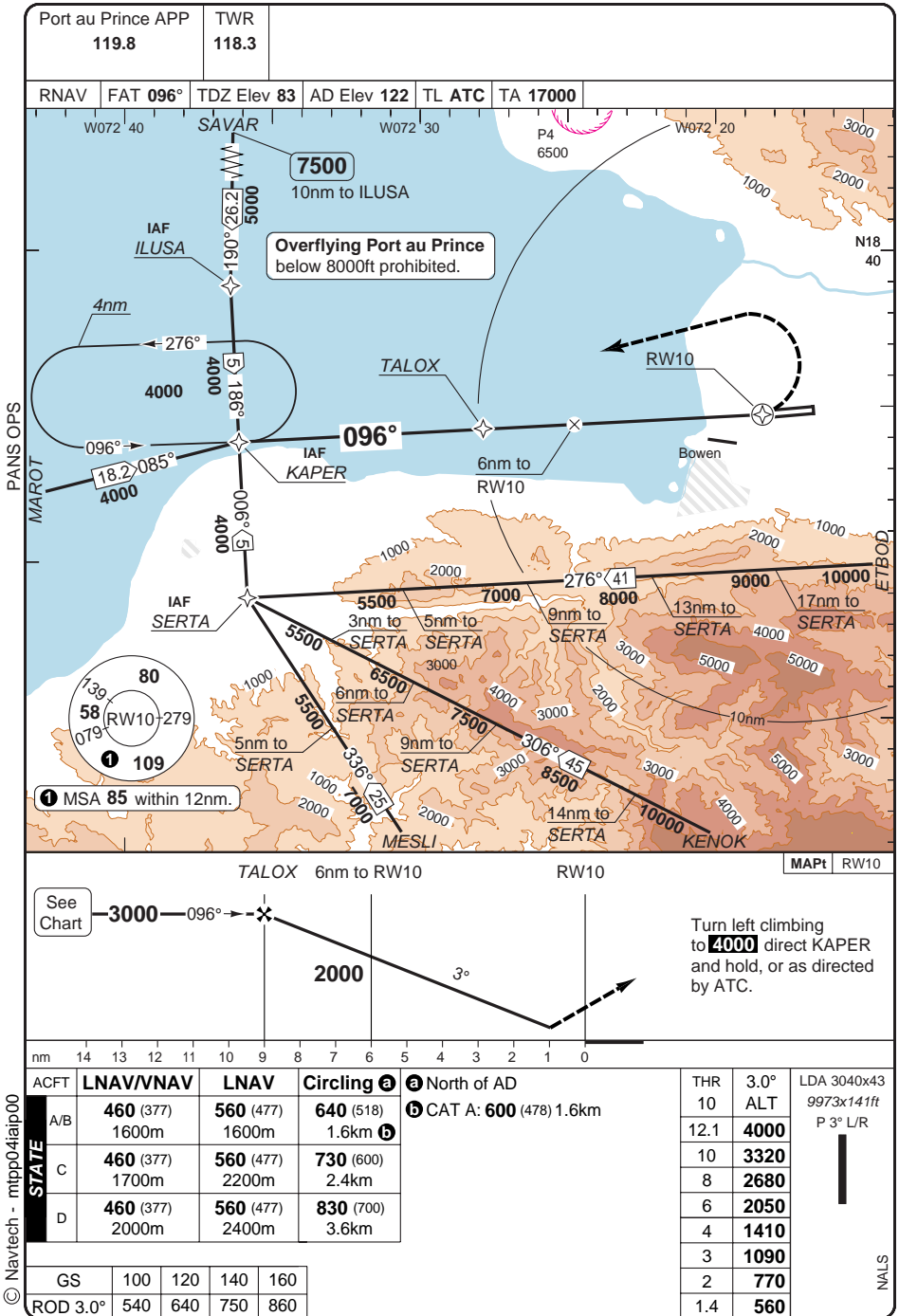
© Navtech - mtp03iaip00

Change: New print

**THIS CHART IS A PART OF NAVIGRAPH NDAC AND IS INTENDED FOR FLIGHT SIMULATION USE ONLY**

# RNAV RWY 10 GPS

# INTL PORT AU PRINCE

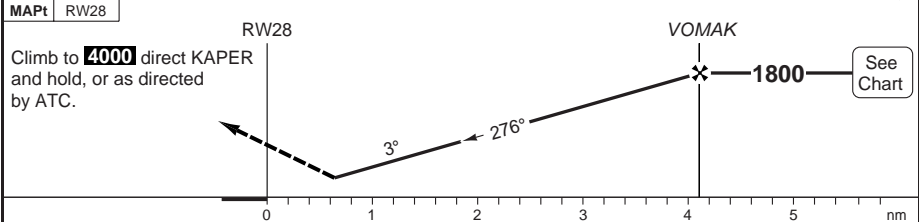
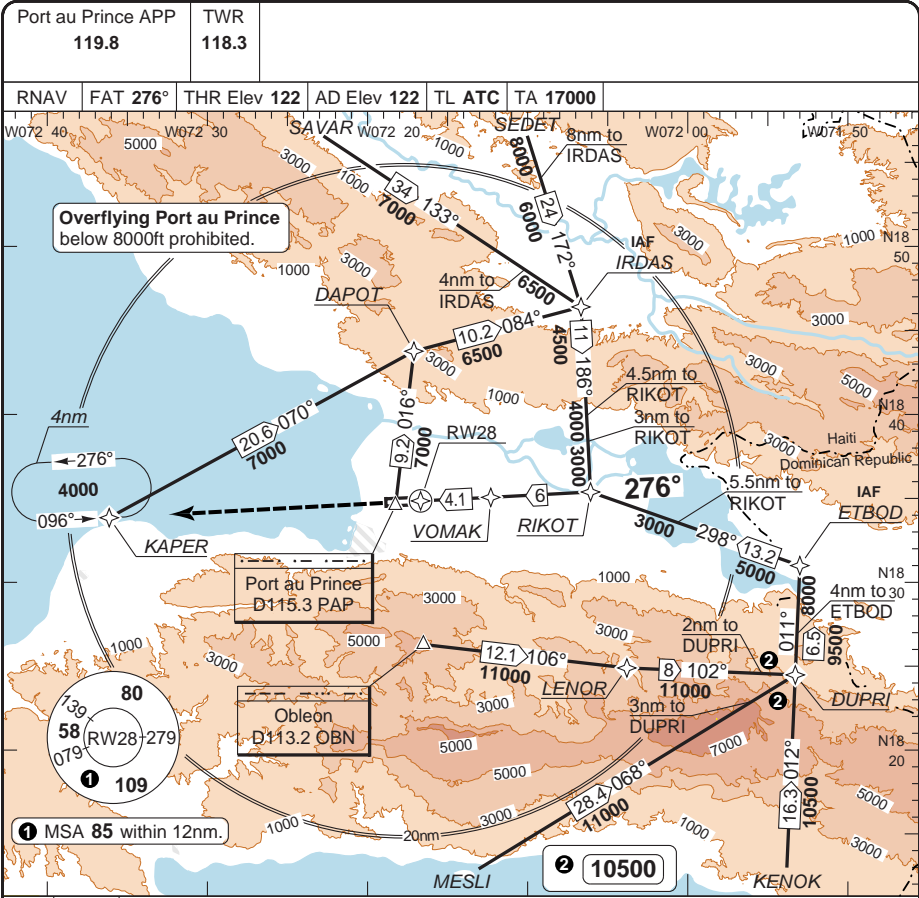


© Navtech - mtp04aip00

NALS

**RNAV RWY 28 GPS**

**INTL PORT AU PRINCE**



ACFT	LNAV	Circling a
A/B	<b>620</b> (498) 1600m	<b>630</b> (500) 1.6km
C	<b>620</b> (498) 2300m	<b>730</b> (600) 2.4km
D	<b>620</b> (498) 2400m	<b>830</b> (700) 3.6km

**a** North of AD  
**b** CAT A: **620** (498) 1.6km

THR	3.7° ALT	LDA 3040x43 9973x141ft P 3° L/R
28	<b>3000</b>	
7.1	<b>2560</b>	
6	<b>2160</b>	
5	<b>1770</b>	
4	<b>1370</b>	
3	<b>970</b>	
2	<b>620</b>	
1.1	<b>620</b>	

GS	100	120	140	160
ROD 3.7°	670	800	930	1070

Change: New

## JAR-OPS Landing Minima

INTL PORT AU PRINCE

The following Minima is for Public Transport aircraft and conforms to JAR-OPS1 regulations.

STRAIGHT-IN APPROACH		C				D			
R/W	Procedure	DA/ MDA QNH ft	DH/ MDH QFE ft	RVR  m	RVR No ALS m	DA/ MDA QNH ft	DH/ MDH QFE ft	RVR  m	RVR No ALS m
10	ILS/DME	<b>540</b>	460	1200	N/A	<b>570</b>	490	1200	N/A
10	LLZ/DME	<b>540</b>	460	2000	N/A	<b>650</b>	570	2000	N/A
10	VOR/DME	<b>540</b>	460	2000	N/A	<b>720</b>	640	2000	N/A
10	VOR	<b>780</b>	690	2000	N/A	<b>1290</b>	1210	2000	N/A
10	RNAV (L/VNAV)(1)	<b>460</b>	380	1800	N/A	<b>460</b>	380	2000	N/A
10	RNAV (LNAV)(1)	<b>560</b>	480	2000	N/A	<b>560</b>	480	2400	N/A
28	RNAV (LNAV)(1)	<b>620</b>	500	2000	N/A	<b>620</b>	500	2400	N/A

Notes:

(1) Values shown are Vis.

CIRCLING		C			D		
R/W	Procedure	MDA QNH ft	MDH QFE ft	Vis m	MDA QNH ft	MDH QFE ft	Vis m
10	VOR (1)	<b>950</b>	820	2400	<b>1290</b>	1170	3600
10	RNAV (1)	<b>730</b>	600	2400	<b>830</b>	700	3600
28	RNAV (LNAV)(1)	<b>730</b>	600	2400	<b>830</b>	700	3600
	All Other Procs (1)	<b>950</b>	820	2400	<b>1140</b>	1020	3600

Notes:

(1) North of runway centre-line only.

TAKE-OFF		C		D	
Runway	Facilities	RVR	Vis	RVR	Vis
10/28	REDL and/or RCL	400	-	400	-
10/28	Nil (Day only)	500	-	500	-

Notes:

## JAR-OPS Landing Minima

INTL PORT AU PRINCE

The following Minima is for Public Transport aircraft and conforms to JAR-OPS1 regulations.

STRAIGHT-IN APPROACH		A				B			
R/W	Procedure	DA/ MDA QNH	DH/ MDH QFE	RVR	RVR	DA/ MDA QNH	DH/ MDH QFE	RVR	RVR
		ft	ft	m	No ALS	ft	ft	m	No ALS
					m				m
10	ILS/DME	520	440	1200	N/A	530	450	1200	N/A
10	LLZ/DME	520	440	1500	N/A	530	450	1500	N/A
10	VOR/DME	520	440	1500	N/A	530	450	1500	N/A
10	VOR	780	690	1500	N/A	780	690	1500	N/A
10	RNAV (L/VNAV)(1)	460	380	1600	N/A	460	380	1600	N/A
10	RNAV (LNAV)(1)	560	480	1600	N/A	560	480	1600	N/A
28	RNAV (LNAV)(1)	620	500	1600	N/A	620	500	1600	N/A

Notes:

(1) Values shown are Vis.

CIRCLING		A			B		
R/W	Procedure	MDA QNH	MDH QFE	Vis	MDA QNH	MDH QFE	Vis
		ft	ft	m	ft	ft	m
10	VOR (1)	780	650	1500	850	720	1600
10	RNAV (1)	600	480	1600	640	520	1600
28	RNAV (LNAV)(1)	620	500	1600	630	500	1600
	All Other Procs (1)	660	540	1500	850	720	1600

Notes:

(1) North of runway centre-line only.

TAKE-OFF		A		B	
Runway	Facilities	RVR	Vis	RVR	Vis
10/28	REDL and/or RCL	400	-	400	-
10/28	Nil (Day only)	500	-	500	-

Notes: