

Airport information:

Country: Panama

City: PANAMA

Coordinates: N 09° 04.3', W 079° 23.0'

Elevation: 135

Customs: Customs: H24

Fuel: Jet A1, AVGAS

RFF: CAT 9

hours: H24.

Runways:

Runway 03L

Takeoff length: 2682, Landing length: 2682

Runway 03R

Takeoff length: 3050, Landing length: 3050

Runway 21L

Takeoff length: 3050, Landing length: 3050

Runway 21R

Takeoff length: 2682, Landing length: 2682

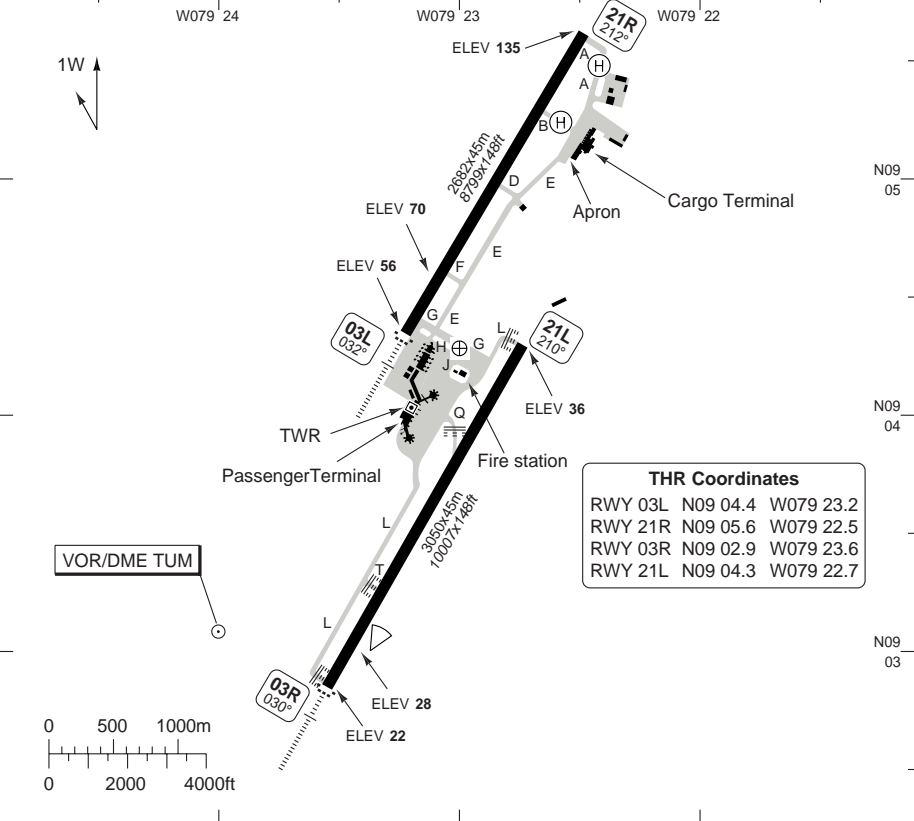
AERODROME

Tocumen INTL PANAMA

10 - 1

Tocumen CLR 129.8	GND 121.9	TWR 118.1	Panama CTL 125.5 N 133.0 S 123.6 E 133.3 N 123.9 S 126.9 W			Tocumen ATIS 127.7
-----------------------------	---------------------	---------------------	--	--	--	------------------------------

AD Elev 135	ARP: N09 04.3 W079 23.0	RFF: CAT 9	AD HR: H24
--------------------	-------------------------	------------	------------



THR Coordinates			
RWY 03L	N09 04.4	W079 23.2	
RWY 21R	N09 05.6	W079 22.5	
RWY 03R	N09 02.9	W079 23.6	
RWY 21L	N09 04.3	W079 22.7	

RWY	Slope	TORA m/ft	LDA m/ft	ALS	REDL	Additional
03L	+0.9	2682 / 8799	2682 / 8799	H-H	M	P 3.1°
21R	-0.9	2682 / 8799	2682 / 8799	-	M	P 3°
03R	+0.1	3050 / 10007	3050 / 10007	H-H	H	P 3°
21L	-0.1	3050 / 10007	3050 / 10007	-	H	P 3°

STATE		TAKE OFF MINIMA	
RWY	Facilities	CEIL/VIS A B C D	
All	2 ENG	400ft/1.8km	
	3 - 4 ENG	400ft/0.8km	

© Navtech - mpto01laorg0

Change: RWY, APN, PAPI

THIS CHART IS A PART OF NAVIGRAPH NDAC AND IS INTENDED FOR FLIGHT SIMULATION USE ONLY

AERODROME Parking

Tocumen INTL PANAMA

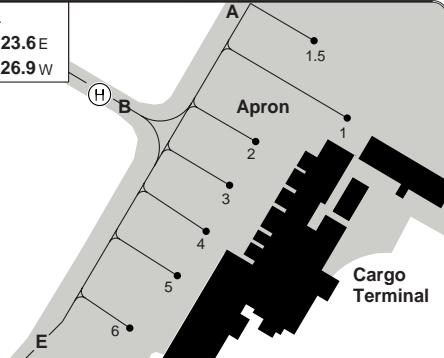
10 - 2

Tocumen CLR 129.8	GND 121.9	TWR 118.1	Panama CTL		
			125.5 N	133.0 S	123.6 E
			133.3 N	123.9 S	126.9 W

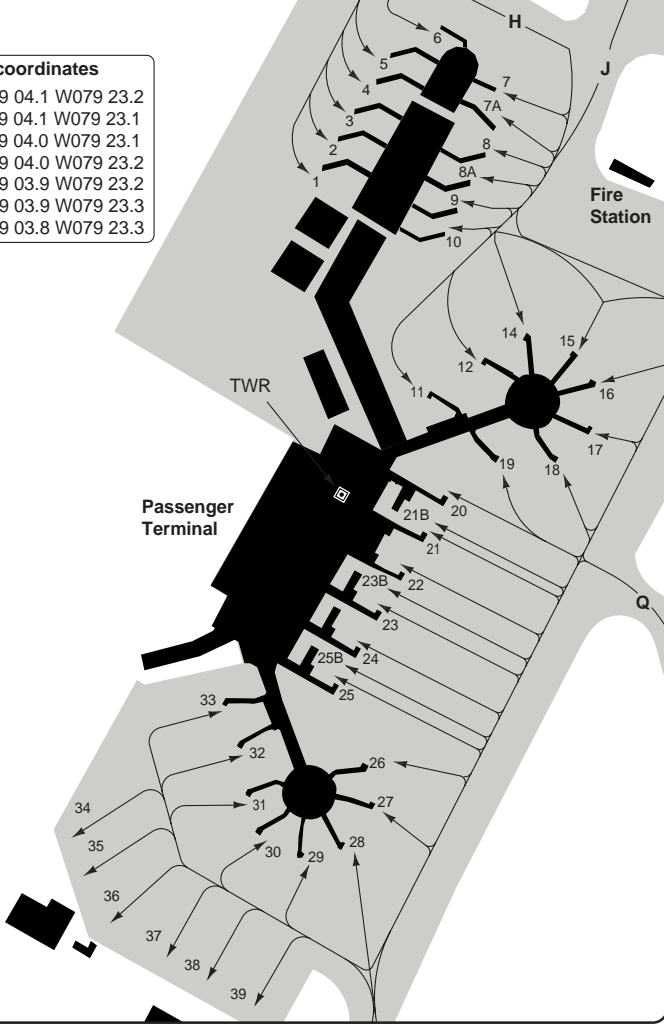
Tocumen ATIS 127.7

RWY 03L/21R

Parking position coordinates	
1	N09 05.2 W079 22.4
1.5	N09 05.3 W079 22.4
2-4	N09 05.2 W079 22.5
5	N09 05.1 W079 22.5
6	N09 05.1 W079 22.6



Parking position coordinates	
11, 12	N09 04.1 W079 23.2
14-19	N09 04.1 W079 23.1
20	N09 04.0 W079 23.1
21-24, 25B, 28	N09 04.0 W079 23.2
25, 26, 27, 29-31, 33	N09 03.9 W079 23.2
32, 34, 35	N09 03.9 W079 23.3
36-39	N09 03.8 W079 23.3



© Navitech - mpto02laorg0

Change: APN, Stands

THIS CHART IS A PART OF NAVIGRAPH NDAC AND IS INTENDED FOR FLIGHT SIMULATION USE ONLY

GENERAL

GENERAL INFORMATION

1. WARNING

- 1.1 High terrain North and West of AD.
- 1.2 Birds in vicinity of AD.

2. SPEED

MAX 250kt within TMA below 10000ft.

3. NOISE ABATEMENT PROCEDURE

- 3.1 No flights below 3000ft over city area and until crossing the coastline.
- 3.2 Area of the city is R355-020 from TBG VOR.
- 3.3 Prohibited to fly over city between 03-11.

4. CIRCUITS

RWY 03L/R right hand circuit.

5. START UP, PUSH BACK

Push-back required.

Engine run up prohibited at Terminal stands.

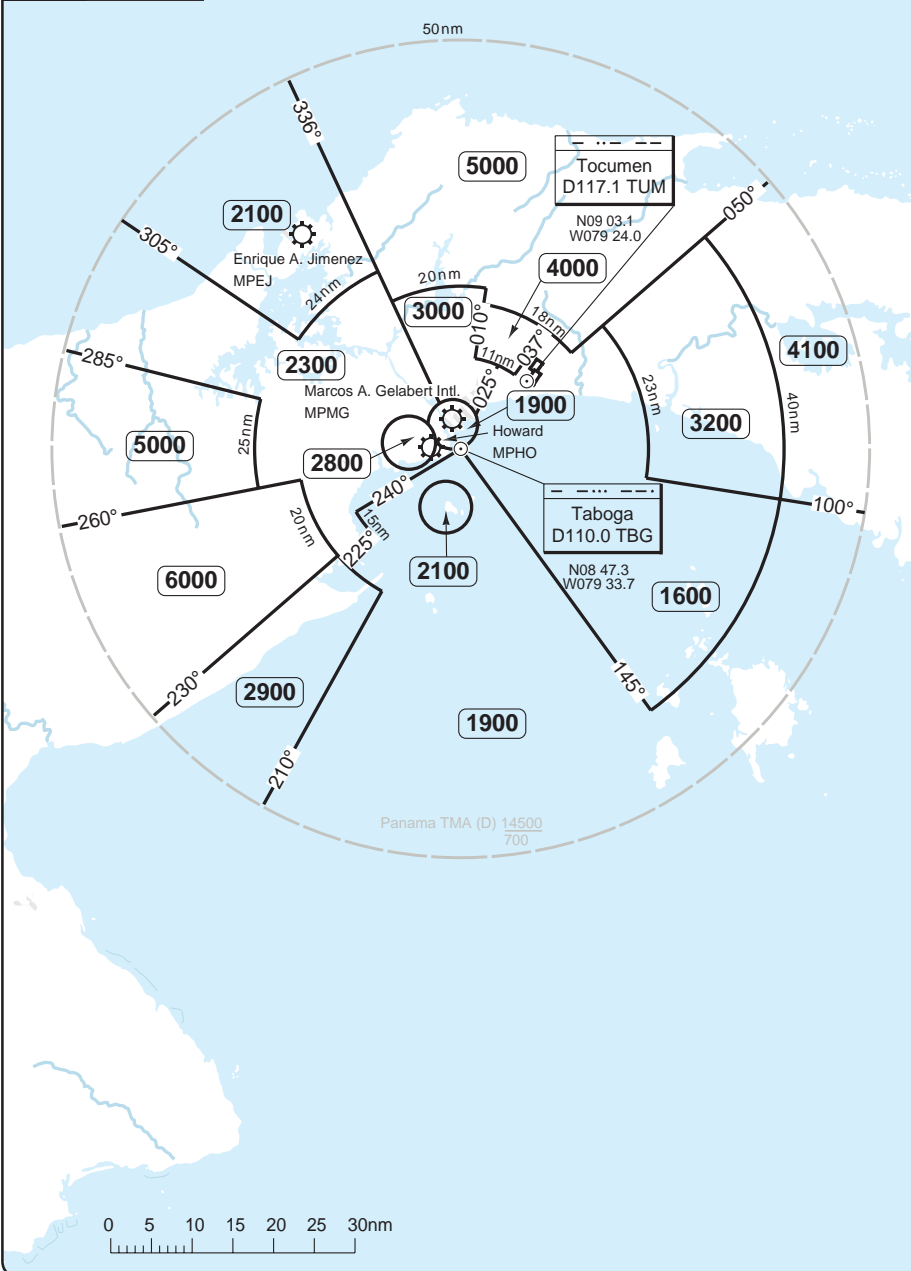
10 - 3

RADAR Minimum Altitudes

Tocumen INTL PANAMA

Panama APP	CTL	Tocumen TWR	GND	ATIS
119.7	125.5 N 133.0 S 123.6 E	118.1	121.9	127.7
121.2	133.3 N 123.9 S 126.9 W			

TL ATC AD Elev 135



20 - 1

© Navitech - mpto01vaorg0

Reverse side blank

Change: New spec.

THIS CHART IS A PART OF NAVIGRAPH NDAC AND IS INTENDED FOR FLIGHT SIMULATION USE ONLY

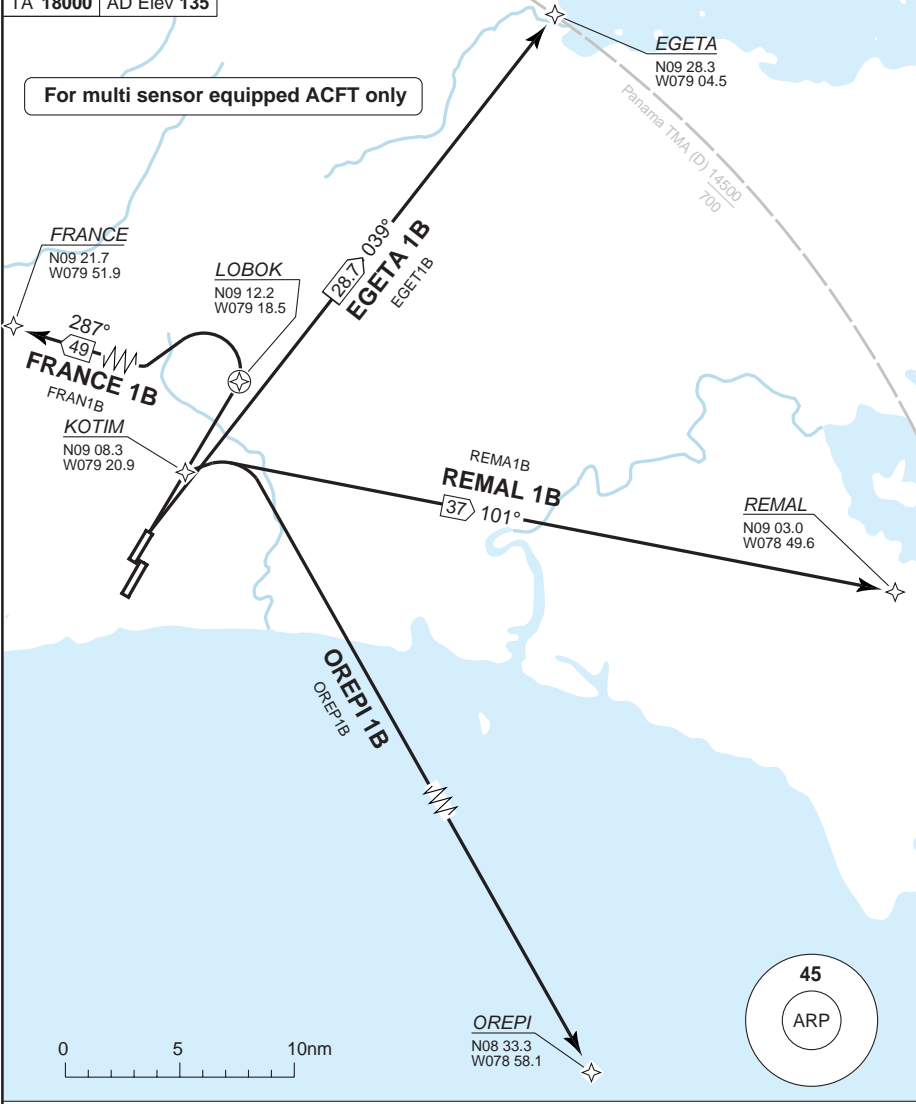
SID RWY 03L **RNAV**

Tocumen INTL PANAMA

Tocumen CLR 129.8	GND 121.9	TWR 118.1	Panama APP 119.7 121.2	CTL 125.5 N 133.0 S 123.6 E 133.3 N 123.9 S 126.9 W	Tocumen ATIS 127.7
-----------------------------	---------------------	---------------------	--	---	------------------------------

TA 18000 | AD Elev 135

For multi sensor equipped ACFT only



30 - 1

ALT RESTRICTION: Maintain **5000** until advised by ATC.

SID	MNM Climb	Routeing
EGETA 1B	4.9% to 2100, then 3.3%	Climb on 039° - EGETA.
FRANCE 1B	7% to 3900, then 3.3%	LOBOK - turn left - 287° - FRANCE.
OREPI 1B	4.9% to 2100, then 3.3%	KOTIM - turn right - OREPI.
REMA 1B	4.9% to 2100, then 3.3%	KOTIM - turn right - 101° - REMAL.

© Navitech - mpto01daorg0

Change: New spec.

THIS CHART IS A PART OF NAVIGRAPH NDAC AND IS INTENDED FOR FLIGHT SIMULATION USE ONLY

SID RWY 03L **RNAV** RNP

Tocumen INTL PANAMA

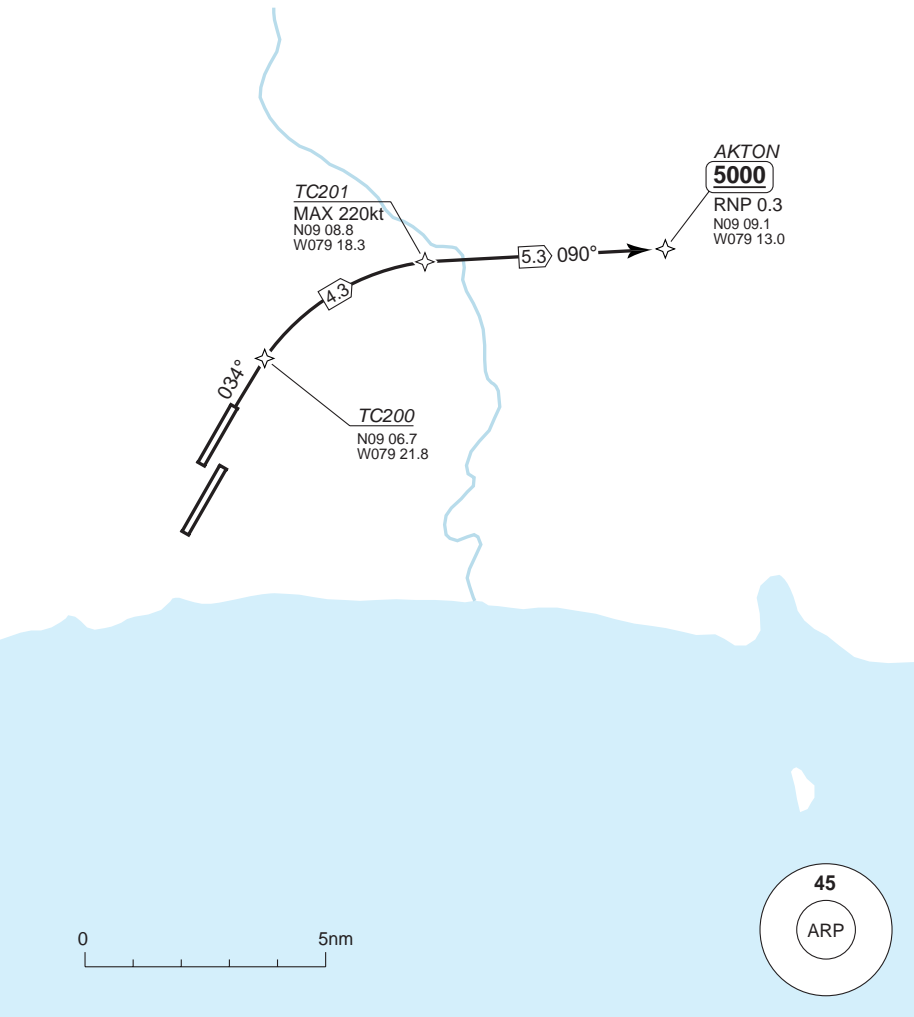
Tocumen CLR 129.8	GND 121.9	TWR 118.1	Panama APP 119.7 121.2	CTL 125.5 N 133.0 S 123.6 E 133.3 N 123.9 S 126.9 W	Tocumen ATIS 127.7
-----------------------------	---------------------	---------------------	--	---	------------------------------

TA **18000** AD Elev **135**

Special ACFT & Aircrew Authorization Required

RF and GPS required

30 - 2



MNM CLIMB GRADIENT: 6.3% to 900.

RWY	Routeing	Altitudes
03L	Climb on 034° - TC200 - TC201 - AKTON.	AKTON MNM 5000

© Navitech - mpto02.daorg0

Change: New

SID RWY 03R **RNAV**

Tocumen INTL PANAMA

Tocumen CLR 129.8	GND 121.9	TWR 118.1	Panama APP 119.7 121.2	CTL 125.5 N 133.0 S 123.6 E 133.3 N 123.9 S 126.9 W	Tocumen ATIS 127.7
-----------------------------	---------------------	---------------------	--	---	------------------------------

TA **18000** AD Elev **135**

For multi sensor equipped ACFT only

Scale distorted



ALT RESTRICTION: Maintain **5000** until advised by ATC.

SID	MNM Climb	Routeing
EGETA 1A	4.4% to 2100, then 3.3%	Climb on 038° - EGETA.
FRANCE 1A	6.3% to 3900, then 3.3%	KUDEL - turn left - 287° - FRANCE.
OREPI 1A	4.4% to 2100, then 3.3%	KIMIK - turn right - OREPI.
REMA 1A	4.4% to 2100, then 3.3%	KIMIK - turn right - 098° - REMAL.

Change: Renumbered

© Navtech - mpto03daorg0

SID RWY 03R **RNAV** RNP

Tocumen INTL PANAMA

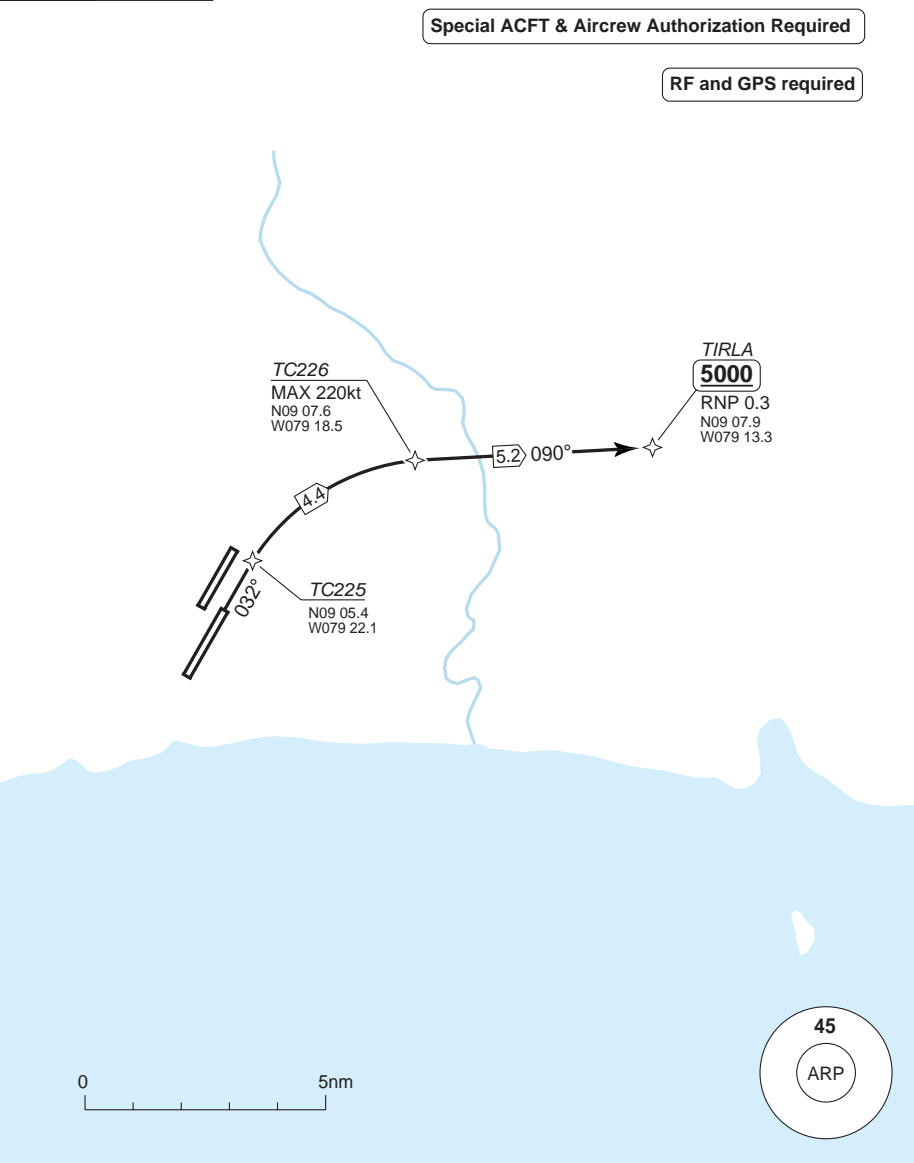
Tocumen CLR 129.8	GND 121.9	TWR 118.1	Panama APP 119.7 121.2	CTL 125.5 N 133.0 S 123.6 E 133.3 N 123.9 S 126.9 W			Tocumen ATIS 127.7
-----------------------------	---------------------	---------------------	--	---	--	--	------------------------------

TA **18000** AD Elev **135**

Special ACFT & Aircrew Authorization Required

RF and GPS required

30 - 4



MNM CLIMB GRADIENT: 6.3% to 400.

RWY	Routeing	Altitude
03R	Climb on 032° - TC225 - TC226 - TIRLA.	TIRLA MNM 5000

© Navitech - mpto04daorg0

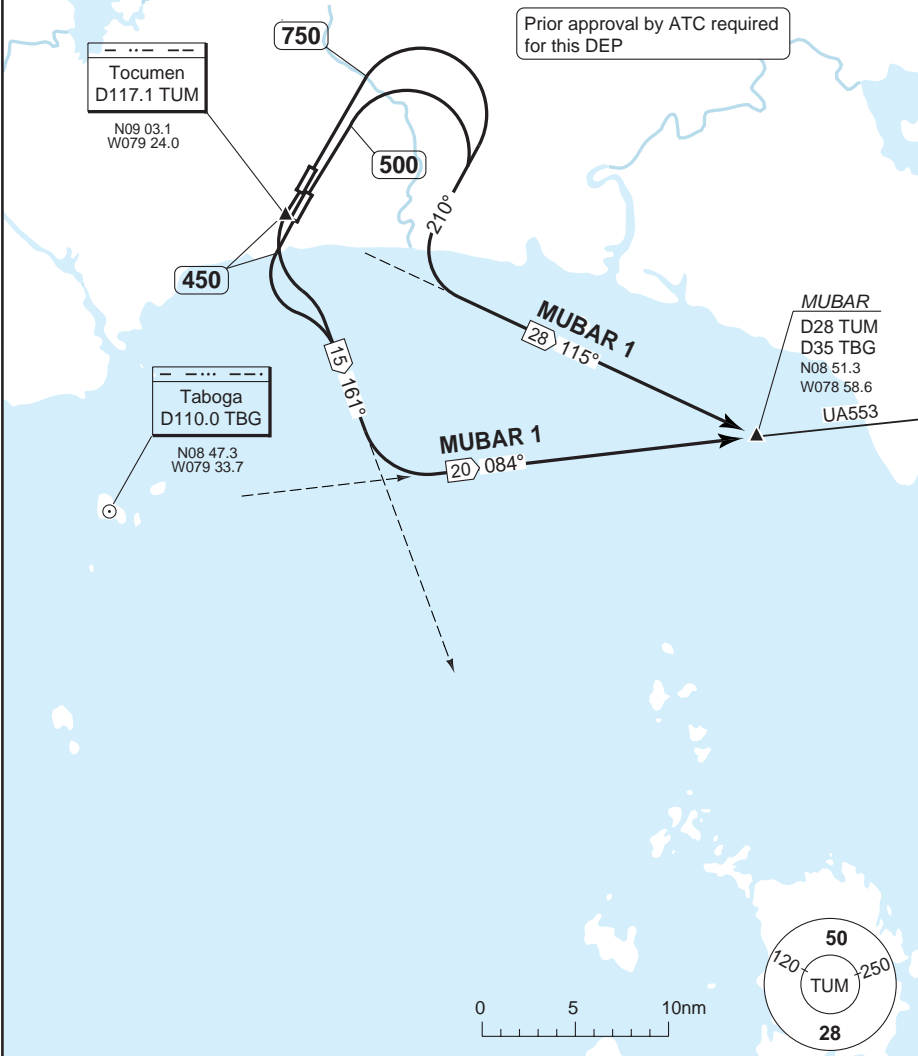
Change: New

SID MUBAR 1

Tocumen INTL PANAMA

Tocumen CLR 129.8	GND 121.9	TWR 118.1	Panama APP 119.7 121.2	CTL 125.5 N 133.0 S 123.6 E 133.3 N 123.9 S 126.9 W	Tocumen ATIS 127.7
-----------------------------	---------------------	---------------------	--	---	------------------------------

TA 18000 AD Elev 135



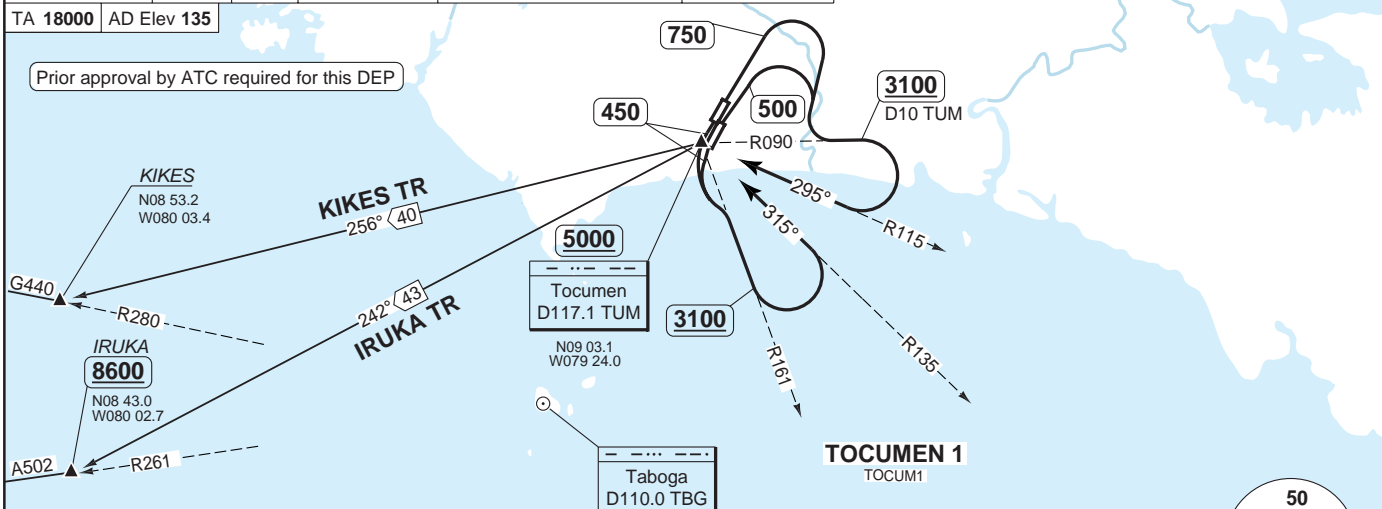
SID	RWY	MNM Climb	Routeing
MUBAR 1	03L	5.1% to MUBAR	Climb ahead to MNM 750 - turn right - 210° - turn left - intcp R115 TUM - MUBAR. Climb on UA553 according to ATC instructions.
	03R	3.8% to MUBAR	Climb ahead to MNM 500 - turn right - 210° - turn left - intcp R115 TUM - MUBAR. Climb on UA553 according to ATC instructions.
	21L/R	3.3% to MUBAR	Climb ahead to MNM 450 - turn left - intcp R161 TUM - turn left - intcp R084 TBG - MUBAR. Climb on UA553 according to ATC instructions.

Change: Renumbered

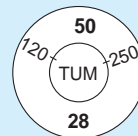
Tocumen CLR 129.8	GND 121.9	TWR 118.1	Panama APP 119.7 121.2	CTL 125.5 N 133.0 S 123.6 E 123.9 S 126.9 W	Tocumen ATIS 127.7
-----------------------------	---------------------	---------------------	--	---	------------------------------

TA **18000** AD Elev **135**

Prior approval by ATC required for this DEP



MNM CLIMB GRADIENT: RWY 03L: 5.1% to R090/D10 TUM
RWY 03R: 3.8% to R090/D10 TUM
RWY 21L/R: 3.3% to assigned ALT.



SID	RWY	Routeing	Altitudes
TOCUMEN 1	03L	Climb ahead to 750 - turn right - intcp R090 TUM to D10 TUM - turn right - intcp R115 TUM - TUM.	D10 TUM MNM 3100
	03R	Climb ahead to 500 - turn right - intcp R090 TUM to D10 TUM - turn right - intcp R115 TUM - TUM.	TUM MNM 5000
	21L/R	Climb ahead to 450 - turn left - intcp R161 TUM to 3100 - turn left - intcp R135 TUM - TUM.	TUM MNM 5000
Transition	Routeing		Altitudes
IRUKA TR	Intcp R242 TUM - IRUKA - intcp A502 - climb by ATC.		IRUKA MNM 8600
KIKES TR	Intcp R256 TUM - KIKES - intcp G440 - climb by ATC.		

STAR RNAV

Tocumen INTL PANAMA

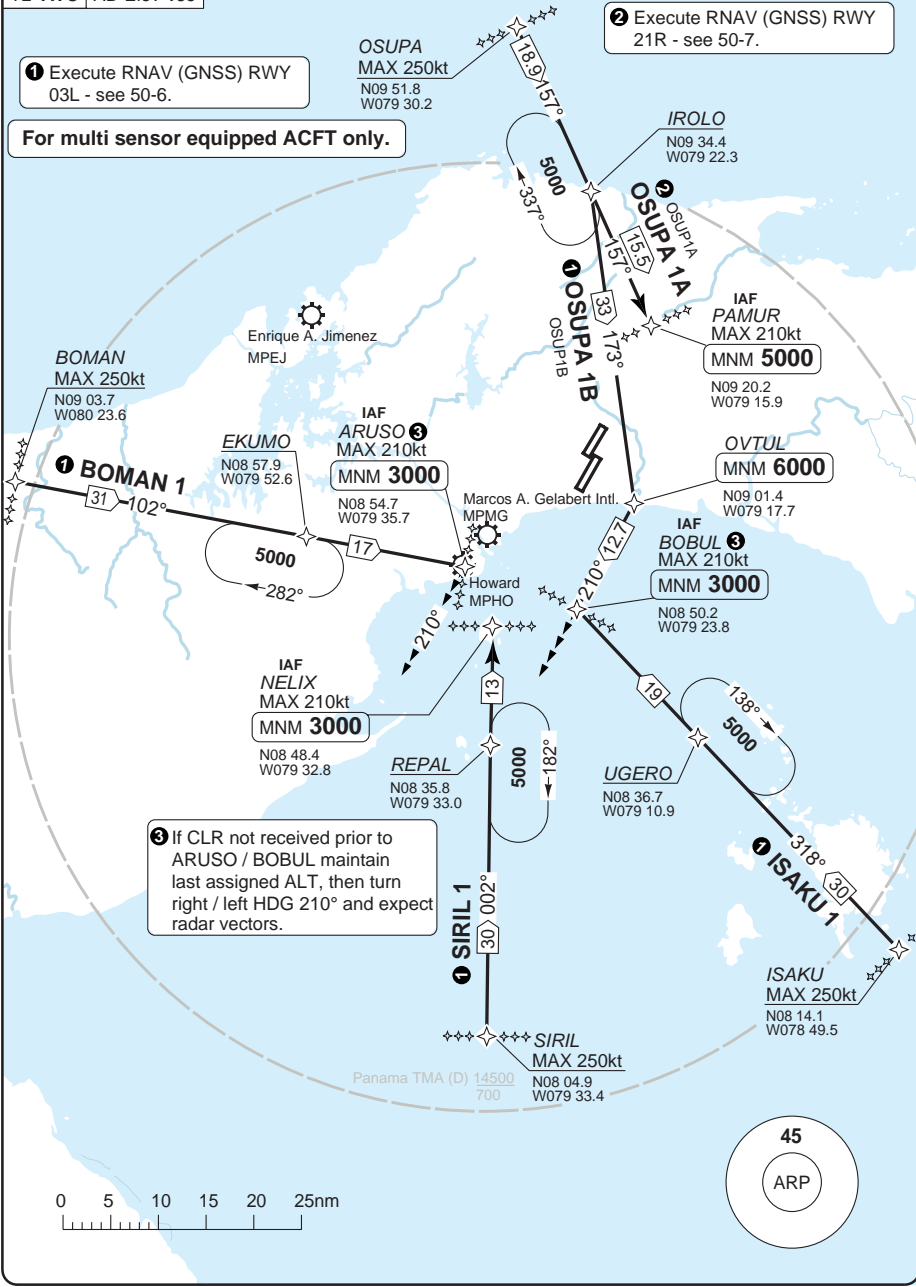
Panama CTL			APP	Tocumen TWR	GND	ATIS
125.5 N	133.0 S	123.6 E	119.7	118.1	121.9	127.7
133.3 N	123.9 S	126.9 W	121.2			
TL	ATC	AD Elev 135				

1 Execute RNAV (GNSS) RWY 03L - see 50-6.

2 Execute RNAV (GNSS) RWY 21R - see 50-7.

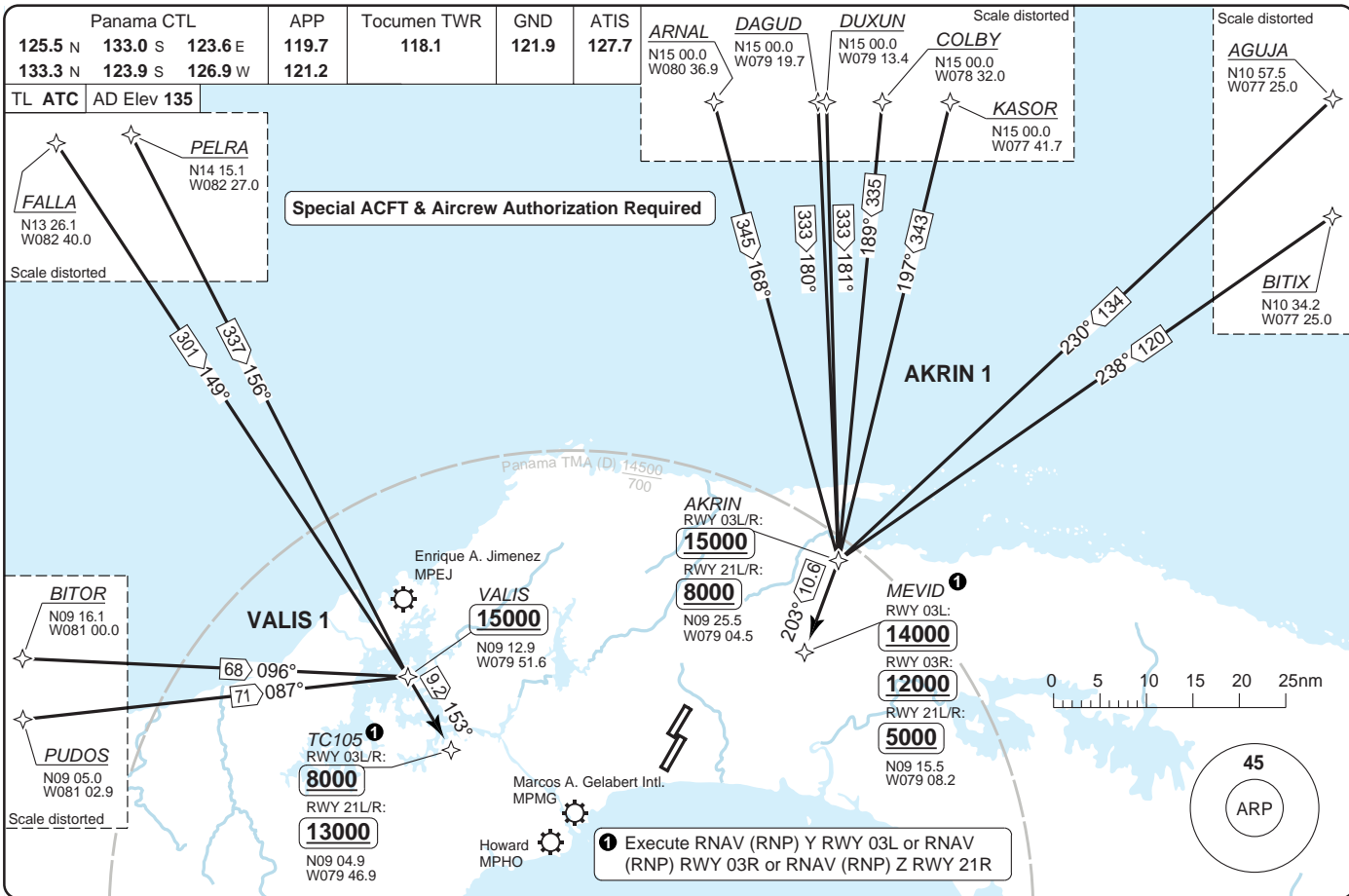
For multi sensor equipped ACFT only.

3 If CLR not received prior to ARUSO / BOBUL maintain last assigned ALT, then turn right / left HDG 210° and expect radar vectors.



© Navtech - mpto01.aorg0

40 - 1



STAR **RNAV** RNP BUSUN 1, ITEDO 1, SIRIL 2

Tocumen INTL PANAMA

Panama CTL			APP	Tocumen TWR	GND	ATIS
125.5 N	133.0 S	123.6 E	119.7	118.1	121.9	127.7
133.3 N	123.9 S	126.9 W	121.2			
TL	ATC	AD Elev 135				

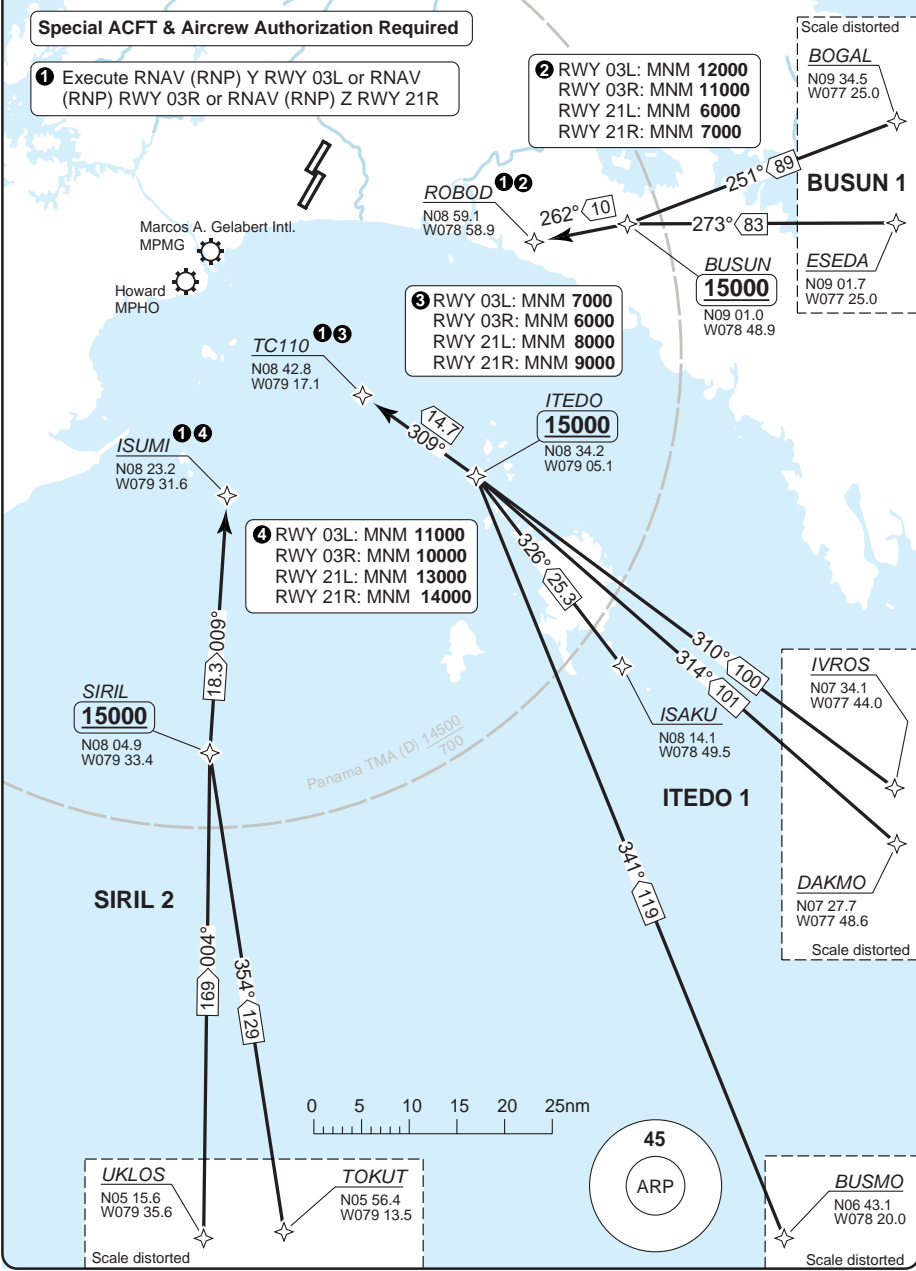
Special ACFT & Aircrew Authorization Required

1 Execute RNAV (RNP) Y RWY 03L or RNAV (RNP) RWY 03R or RNAV (RNP) Z RWY 21R

2 RWY 03L: MNM 12000
 RWY 03R: MNM 11000
 RWY 21L: MNM 6000
 RWY 21R: MNM 7000

3 RWY 03L: MNM 7000
 RWY 03R: MNM 6000
 RWY 21L: MNM 8000
 RWY 21R: MNM 9000

4 RWY 03L: MNM 11000
 RWY 03R: MNM 10000
 RWY 21L: MNM 13000
 RWY 21R: MNM 14000



40 - 3

© Navtech - mpto03aaorg0

Reverse side blank

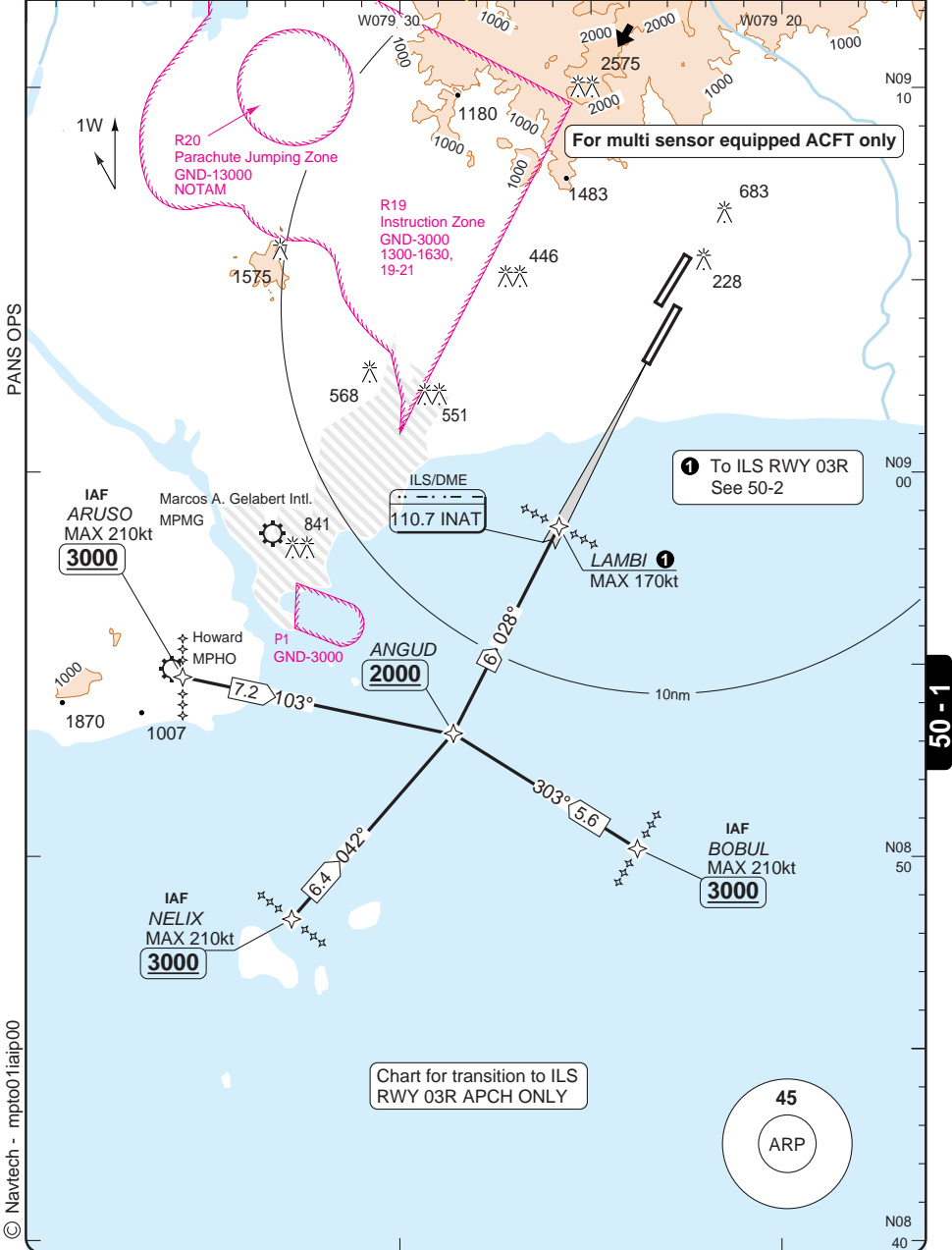
Change: New

THIS CHART IS A PART OF NAVIGRAPH NDAC AND IS INTENDED FOR FLIGHT SIMULATION USE ONLY

TRANSITION ILS RWY 03R **RNAV** GNSS Tocumen INTL PANAMA

Panama CTL			APP	Tocumen TWR	GND	ATIS
125.5 N	133.0 S	123.6 E	119.7	118.1	121.9	127.7
133.3 N	123.9 S	126.9 W	121.2			

TDZ Elev 28	AD Elev 135	TL ATC	TA 18000
-------------	-------------	--------	----------



PANS OPS

© Navtech - mpto01aip00

Change: Spec update

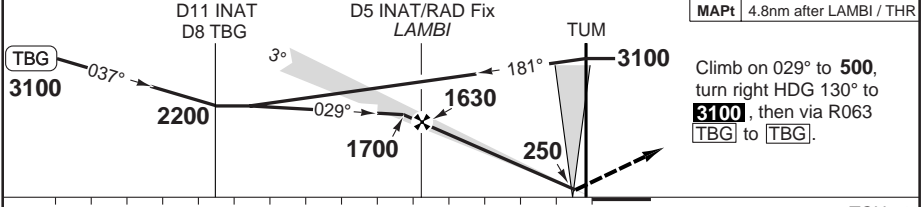
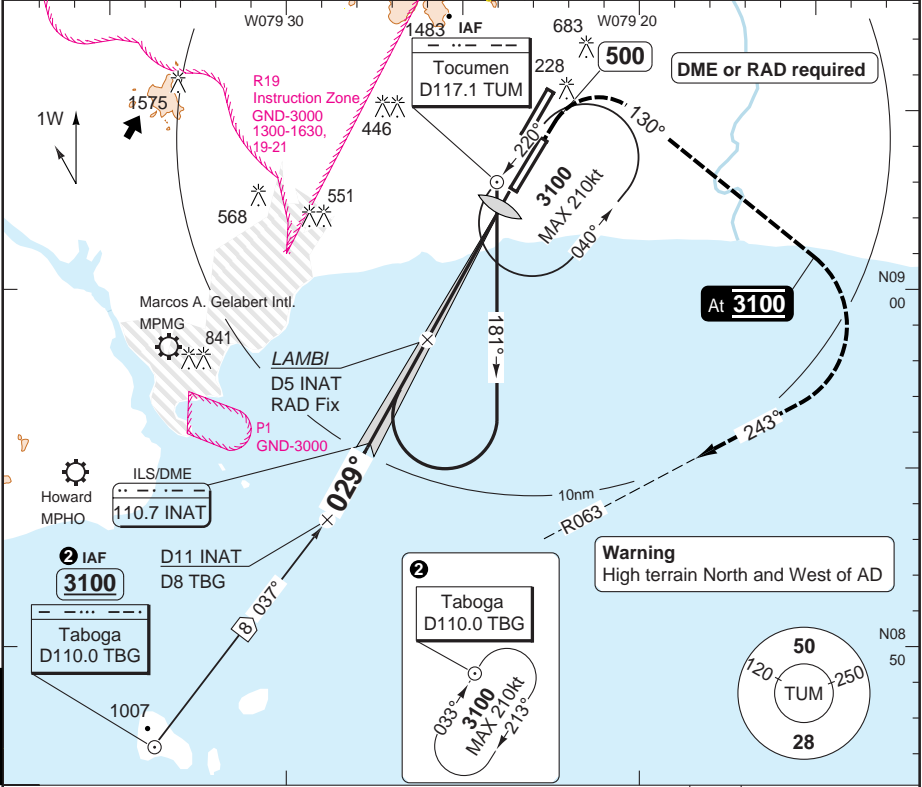
THIS CHART IS A PART OF NAVIGRAPH NDAC AND IS INTENDED FOR FLIGHT SIMULATION USE ONLY

ILS RWY 03R

Tocumen INTL PANAMA

Panama CTL			APP	Tocumen TWR	GND	ATIS
125.5 N	133.0 S	123.6 E	119.7	118.1	121.9	127.7
133.3 N	123.9 S	126.9 W	121.2			

ILS/DME	110.7 INAT	FAT	029°	THR Elev	23	AD Elev	135	TL ATC	TA	18000
---------	------------	-----	------	----------	----	---------	-----	--------	----	-------



STATE	ACFT	ILS	LOC	Circling	DME INAT	3.0° ALT	LDA 3050x45
A	B	230 (206)	800m	540 (405)	6.8	2200	10007x148ft
				640 (500)			
				740 (600)			
				840 (700)			
D		360 (332)	1200m	840 (700)	3.6km	5	1630
GS	80	100	120	140	160	4	1310
ROD 3.0°	440	540	650	760	870	3	990
FAF-MAPt	3:36	2:52	2:24	2:03	1:48	2	660
						1.1	360

© Navtech - mpto02aip00

Change: Proc, HP, Profile

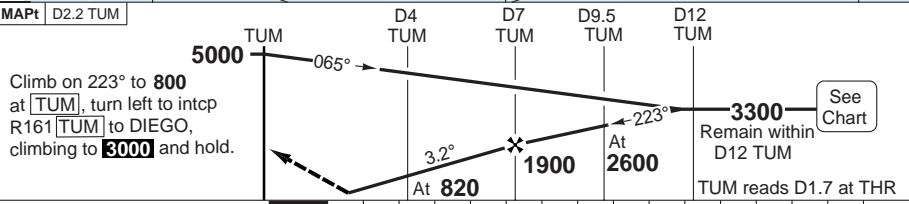
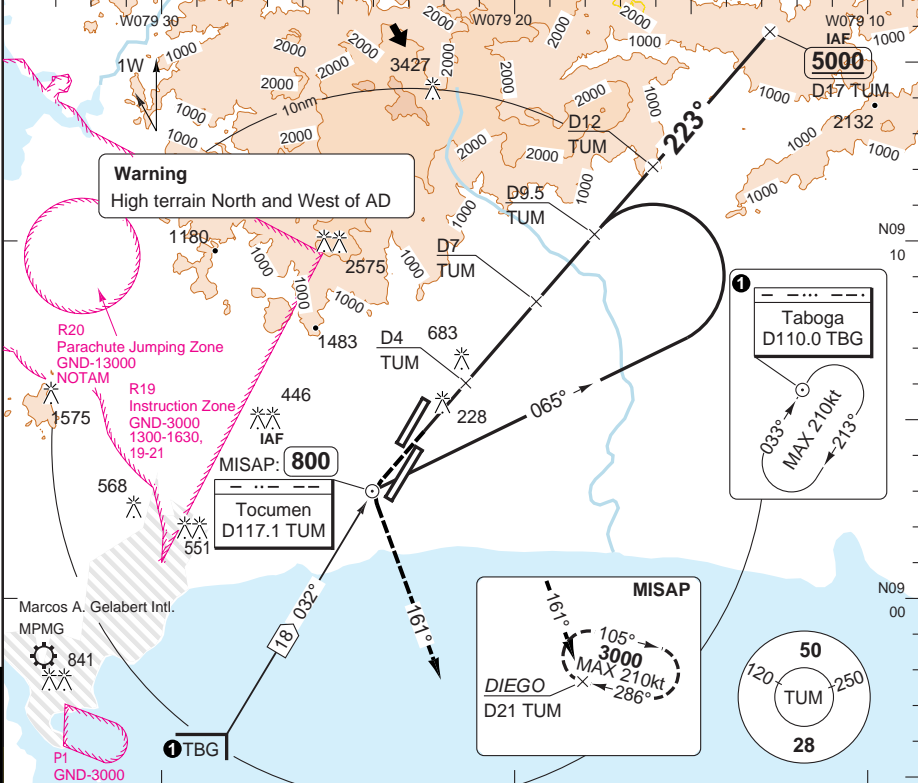
THIS CHART IS A PART OF NAVIGRAPH NDAC AND IS INTENDED FOR FLIGHT SIMULATION USE ONLY

VOR RWY 21L VOR/DME

Tocumen INTL PANAMA

Panama CTL			APP	Tocumen TWR	GND	ATIS
125.5 N	133.0 S	123.6 E	119.7	118.1	121.9	127.7
133.3 N	123.9 S	126.9 W	121.2			

VOR/DME	117.1 TUM	FAT 223°	TDZ Elev 36	AD Elev 135	TL ATC	TA 18000
---------	-----------	----------	-------------	-------------	--------	----------



ACFT	VOR+DME	Circling ^a
A	480 (444) 1600m	580 (444) 1.6km ^c
B		640 (500) 1.6km
C	480 (444) 2100m	740 (600) 2.4km
D	480 (444) 2400m	840 (700) 3.6km

^a NA Northwest of RWY 03L/21R.
^c 500ft

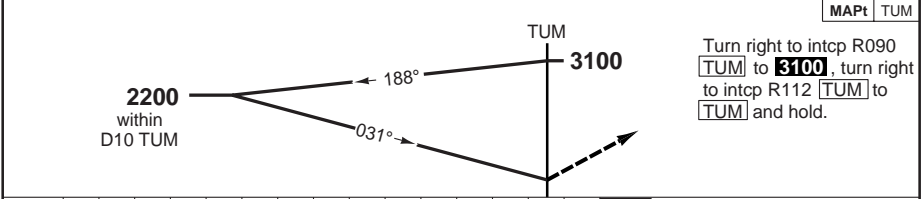
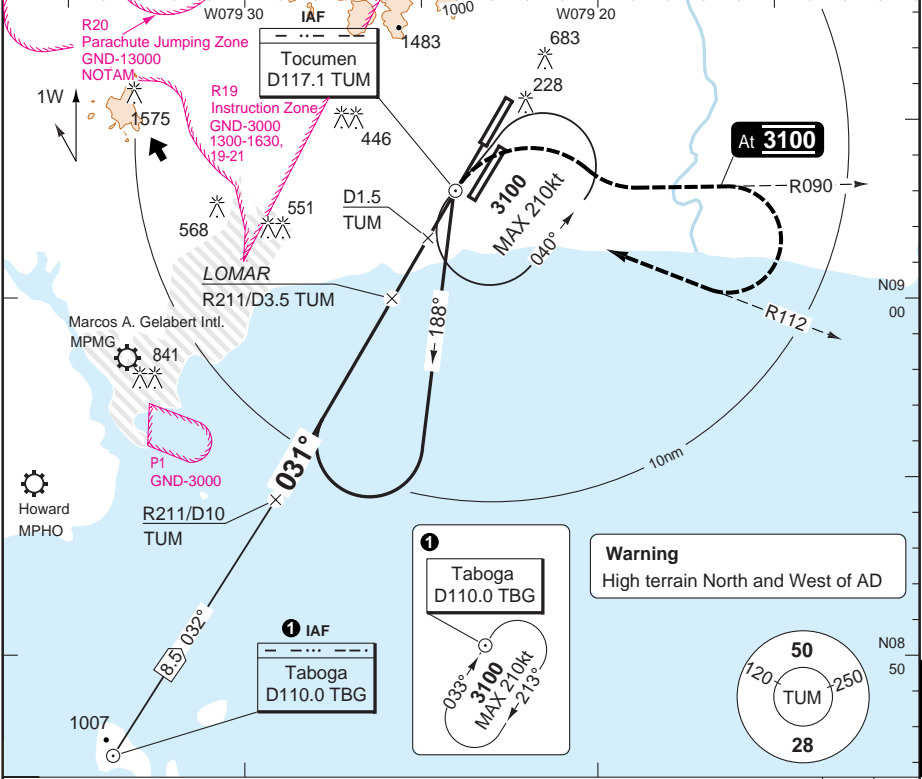
LDA 3050x45
10007x148ft
P 3°

VOR RWY 03L

Tocumen INTL PANAMA

Panama CTL			APP	Tocumen TWR	GND	ATIS
125.5 N	133.0 S	123.6 E	119.7	118.1	121.9	127.7
133.3 N	123.9 S	126.9 W	121.2			

VOR/DME	117.1 TUM	FAT 031°	THR Elev 56	AD Elev 135	TL ATC	TA 18000
---------	-----------	----------	-------------	-------------	--------	----------



nm	15	14	13	12	11	10	9	8	7	6	5	4	3	2	1	0
----	----	----	----	----	----	----	---	---	---	---	---	---	---	---	---	---

ACFT	VOR	VOR ^a	Circling ^b
A		680 (624) 2400m	760 (624) 2.8km
B	680 (624) 2200m		
C		680 (624) 2600m	840 (700) 3.6km
D			

^a Non CDFA.
^b NA Northwest of RWY 03L/21R.

LDA 2682x45
8799x148ft
P 3.1°

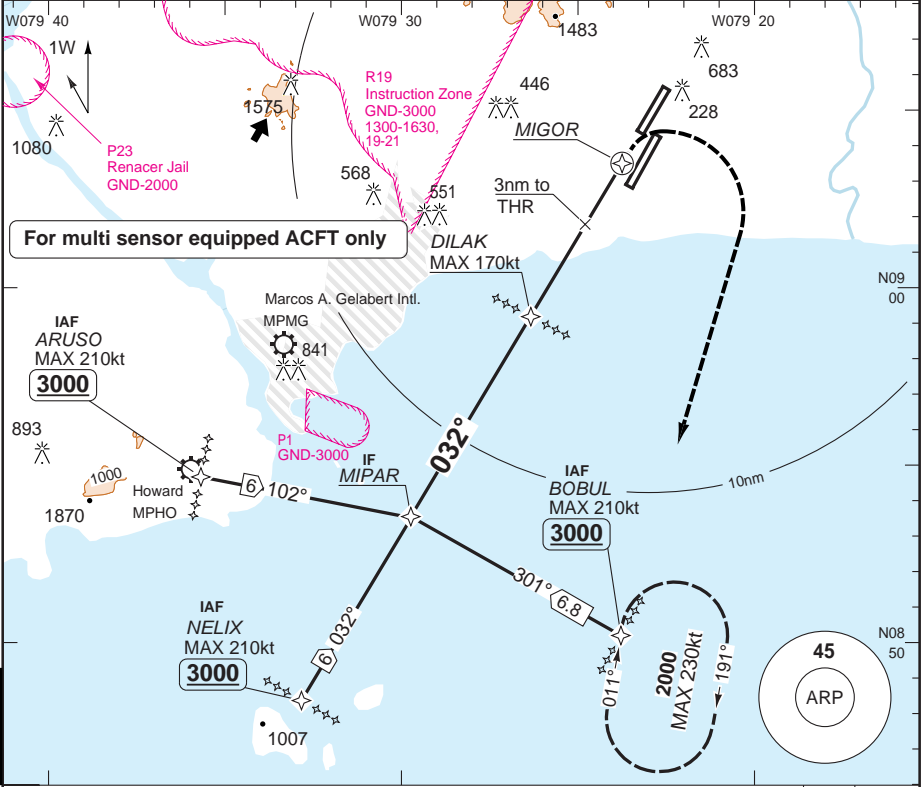
Change: ALS box

RNAV (GNSS) RWY 03L

Tocumen INTL PANAMA

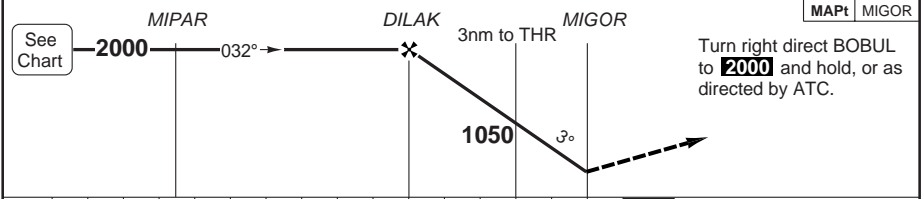
Panama CTL			APP	Tocumen TWR	GND	ATIS
125.5 N	133.0 S	123.6 E	119.7	118.1	121.9	127.7
133.3 N	123.9 S	126.9 W	121.2			

RNAV	FAT 032°	THR Elev 56	AD Elev 135	TL ATC	TA 18000
------	----------	-------------	-------------	--------	----------



PANS OPS

50 - 6



ACFT	LNAV/VNAV	LNAV	Note: Circling NA
A	400 (344)	390 (334)	
B	1200m	800m	
C			
D	400 (344) 1600m	390 (334) 1200m	

GS	80	100	120	140	160
ROD 3.0°	420	530	630	740	840

THR 03L	3.0° ALT	LDA 2682X45
6	2000	8799x148ft
5	1690	P 3.1°
4	1380	
3	1070	
2	750	
MAPt	440	
0.9	390	

© Navtech - mpto06iaip00

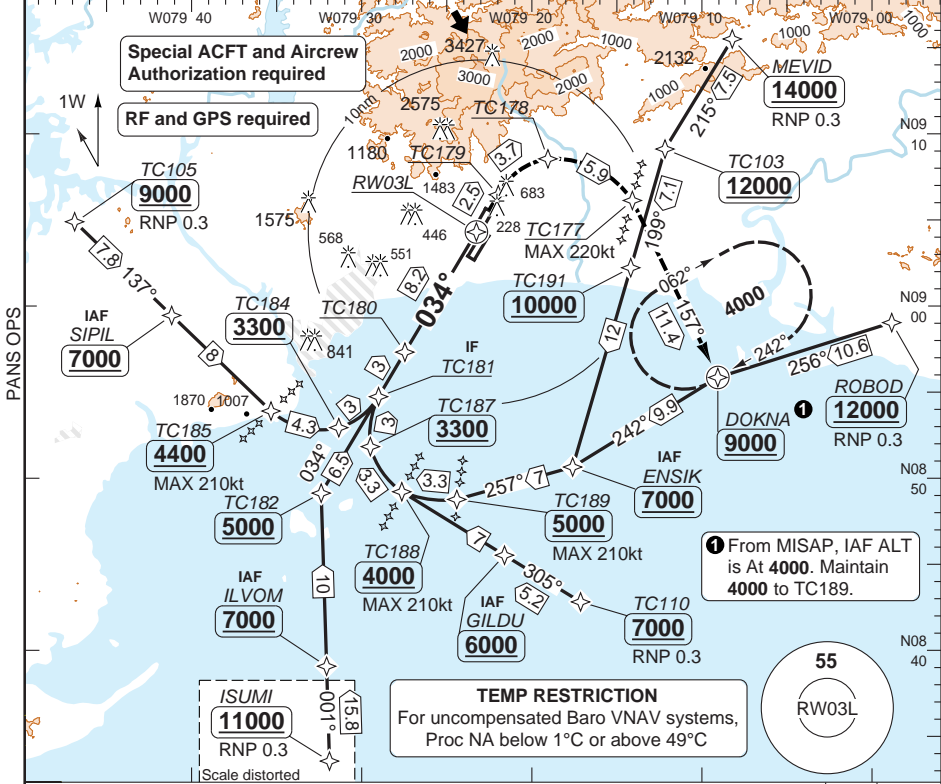
Change: ALS box

RNAV (RNP) Y RWY 03L

Tocumen INTL PANAMA

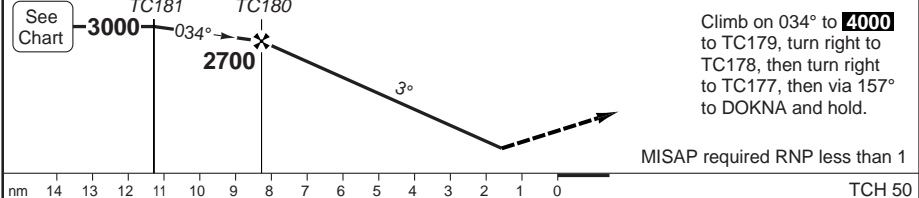
Panama CTL			APP	Tocumen TWR	GND	ATIS
125.5 N	133.0 S	123.6 E	119.7	118.1	121.9	127.7
133.3 N	123.9 S	126.9 W	121.2			

RNAV	FAT 034°	THR Elev 56	AD Elev 135	TL ATC	TA 18000
------	----------	-------------	-------------	--------	----------



① From MISAP, IAF ALT is At 4000. Maintain 4000 to TC189.

MAP: RW03L



nm	14	13	12	11	10	9	8	7	6	5	4	3	2	1	0	TCH 50
ACFT	RNP 0.15 a		RNP 0.30 a		Note: Circling NA a LNAV/VNAV											
A																
B	430 (369)		470 (406)													
C	1200m		1600m													
D																
GS	80	100	120	140	160											
ROD 3.0°	420	530	630	740	840											
THR 03L	3.0° ALT	LDA 2682x45 8799x148ft P 3.1°														
9.2	3000															
8	2640															
6	2010															
5	1690															
4	1370															
3	1060															
2	740															
1	430															

© Navtech - mpto07raip00

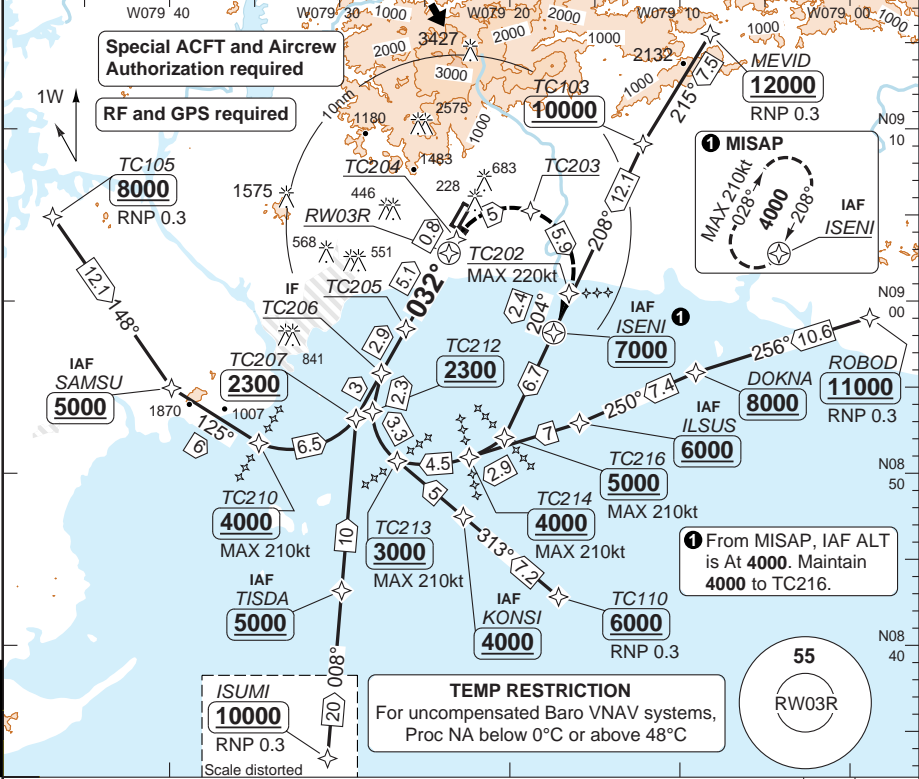
50 - 7

RNAV (RNP) RWY 03R

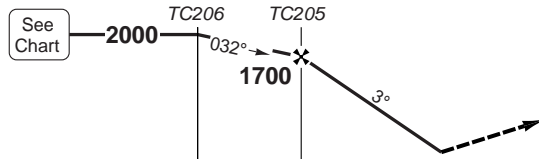
Documen INTL PANAMA

Panama CTL			APP	Documen TWR	GND	ATIS
125.5 N	133.0 S	123.6 E	119.7	118.1	121.9	127.7
133.3 N	123.9 S	126.9 W	121.2			

RNAV	FAT 032°	THR Elev 22	AD Elev 135	TL ATC	TA 18000
------	----------	-------------	-------------	--------	----------



50 - 8



Climb on 032° to **4000** to TC204, turn right to TC203, then turn right to TC202, then via 204° to ISENI and hold.

MISAP required RNP less than 1

nm	12	11	10	9	8	7	6	5	4	3	2	1	0	TCH 50
----	----	----	----	---	---	---	---	---	---	---	---	---	---	--------

ACFT	RNP 0.15 a	RNP 0.30 a	Note: Circling NA a LNAV/VNAV
A			
B	280 (256) 800m	350 (328) 1200m	
C			
D			

THR 03R	3.0° ALT	LDA 3050x45 10007x148ft P 3°
6.1	2000	FALS
5	1670	
4	1350	
3	1030	
2	710	
1	390	
0.7	280	

GS	80	100	120	140	160
ROD 3.0°	430	530	640	740	850

Change: New

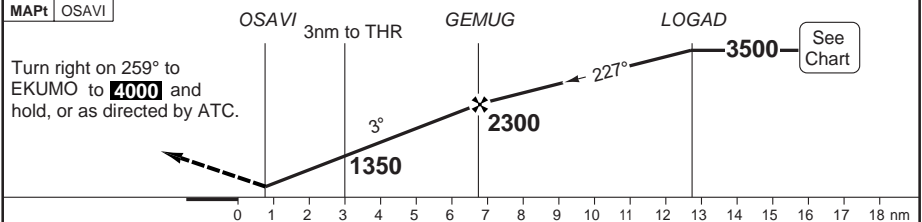
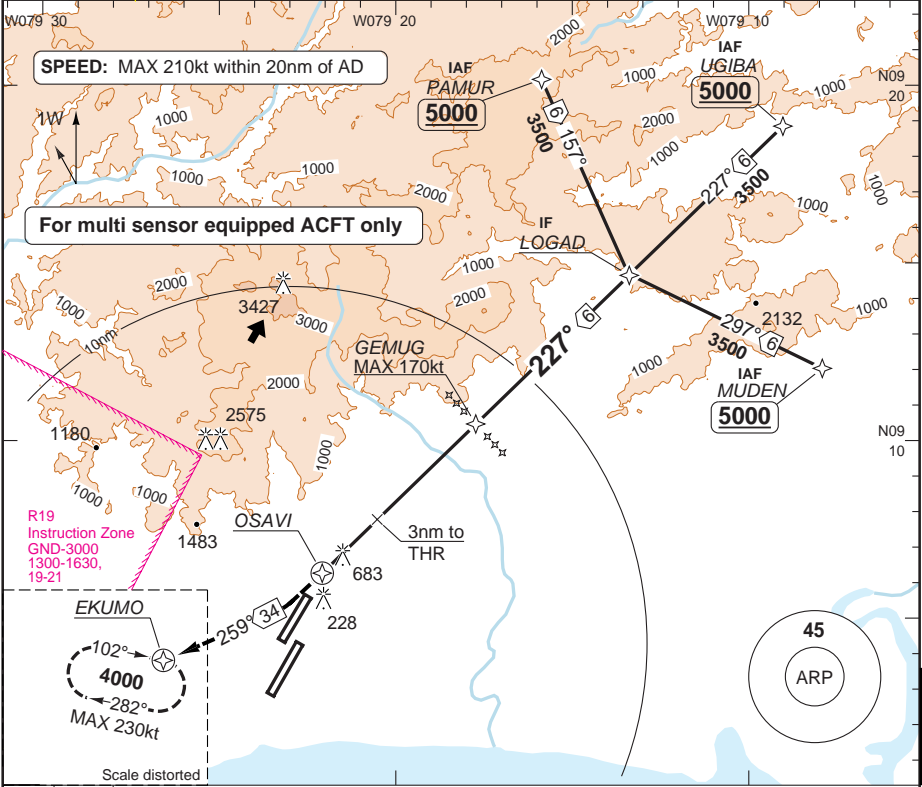
© Navtech - mpto08iapt00

RNAV (GNSS) RWY 21R

Tocumen INTL PANAMA

Panama CTL			APP	Tocumen TWR	GND	ATIS
125.5 N	133.0 S	123.6 E	119.7	118.1	121.9	127.7
133.3 N	123.9 S	126.9 W	121.2			

RNAV	FAT 227°	THR Elev 135	AD Elev 135	TL ATC	TA 18000
------	----------	--------------	-------------	--------	----------



ACFT	LNAV	Note: Circling NA	THR 21R	2.9° ALT	LDA 2682x45
A			10.7	3500	8799x148ft
B	1140 (1005)		9	2990	P 3°
C	4900m		8	2680	
D			7	2370	
			6	2060	
			5	1740	
			4	1430	
			3.1	1140	

GS	80	100	120	140	160
ROD 2.9°	420	520	630	730	840

Change: Renumbered

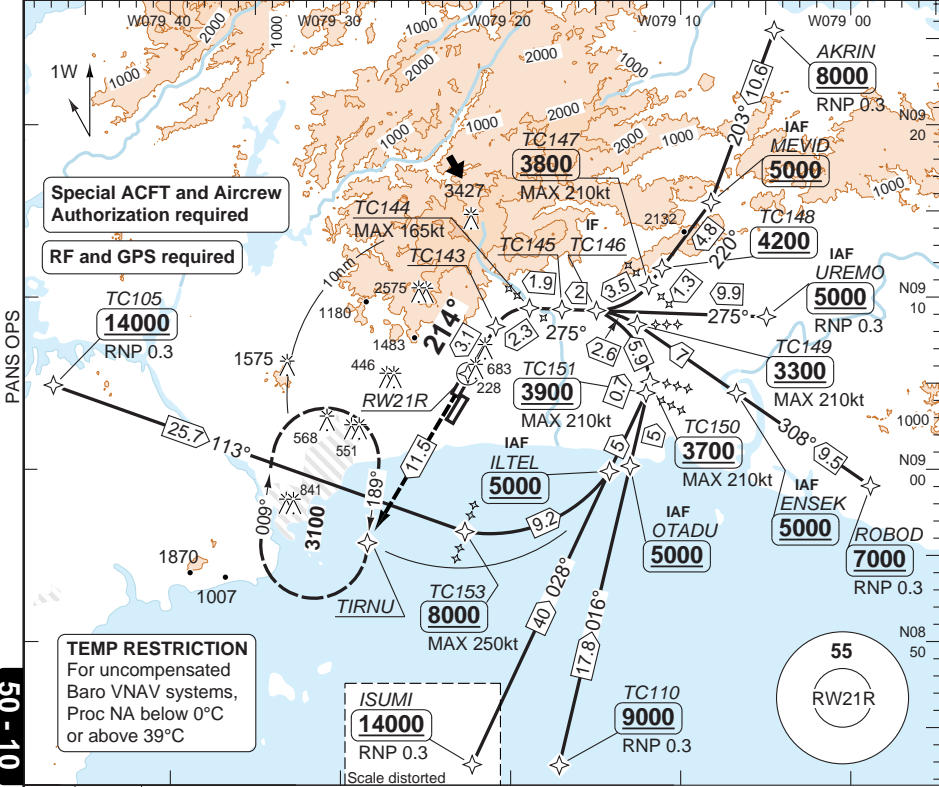
THIS CHART IS A PART OF NAVIGRAPH NDAC AND IS INTENDED FOR FLIGHT SIMULATION USE ONLY

RNAV (RNP) Z RWY 21R

Documen INTL PANAMA

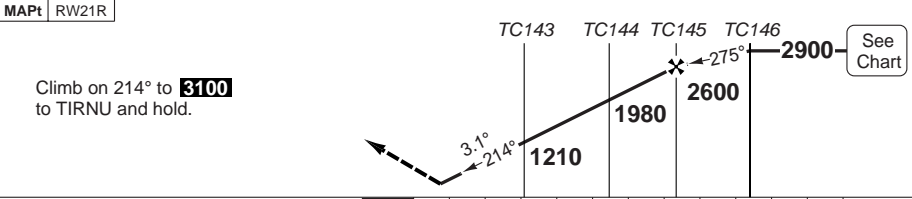
Panama CTL			APP	Documen TWR	GND	ATIS
125.5 N	133.0 S	123.6 E	119.7	118.1	121.9	127.7
133.3 N	123.9 S	126.9 W	121.2			

RNAV	FAT 214°	THR Elev 135	AD Elev 135	TL ATC	TA 18000
------	----------	--------------	-------------	--------	----------



TEMP RESTRICTION
For uncompensated Baro VNAV systems, Proc NA below 0°C or above 39°C

50 - 10



TCH 50						Note: Circling NA		THR 21R	3.1° ALT	LDA 2682x45
ACFT	RNP 0.10 a	RNP 0.15 a	RNP 0.30 a				a LNAV/VNAV	8.2	2900	8799x148ft
A								7	2510	P 3°
B	390 (250)	460 (320)	950 (813)					5	1850	
C	1300m	1600m	4400m					4	1510	
D								3	1180	
								2	850	
GS	80	100	120	140	160			1	520	
ROD 3.1°	440	550	660	770	880			0.6	390	

© Navtech - mpto10iaip00

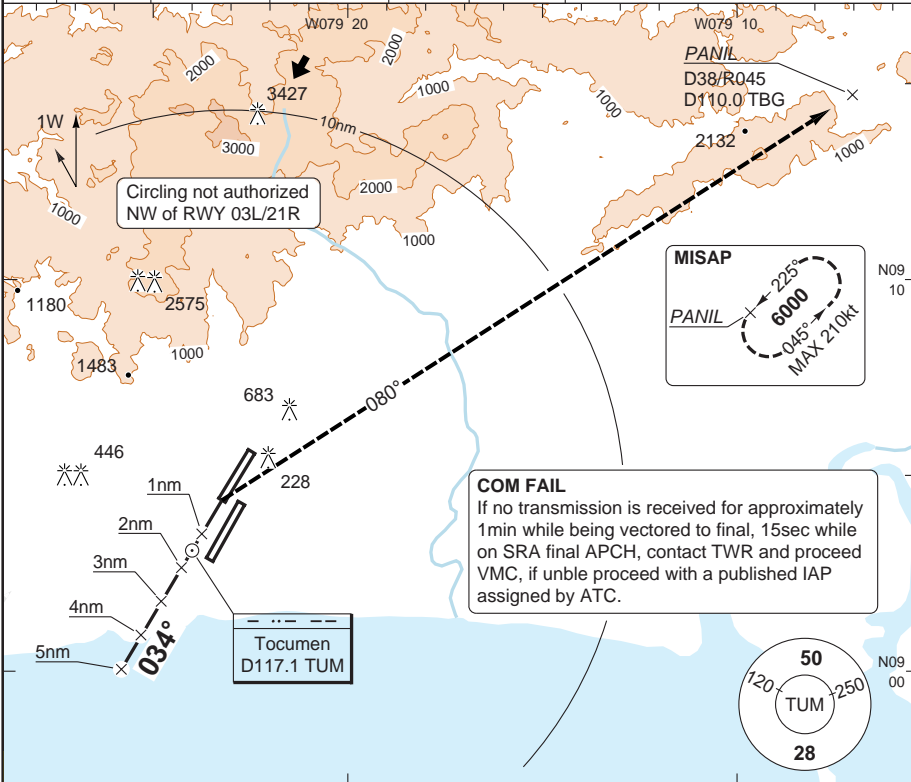
NALS

Change: New

SRA RWY 03L

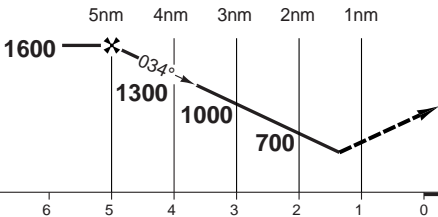
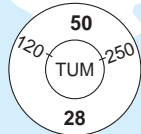
Tocumen INTL PANAMA

Panama CTL			APP	Tocumen TWR	GND	ATIS
125.5 N	133.0 S	123.6 E	119.7	118.1	121.9	127.7
133.3 N	123.9 S	126.9 W	121.2			
SRA	FAT 034°	THR Elev 56	AD Elev 135	TL ATC	TA 18000	



COM FAIL
 If no transmission is received for approximately 1min while being vectored to final, 15sec while on SRA final APCH, contact TWR and proceed VMC, if unble proceed with a published IAP assigned by ATC.

MISAP
 PANIL
 225°
 6000
 045°
 MAX 2.10kt



Climbing right turn via 080° to **6000** to PANIL and hold.

ACFT	SRA	Circling a	a	NA Northwest of RWY 03L/21R.					THR 03L	2.8° ALT	LDA 2682x45
A	560 (504)	640 (504)						5	1600	8799x148ft	
B	1500m	1.6km						4	1300		
C	560 (504)	740 (600)						3	1010	P 3.1°	
D	1600m	840 (700)						2	710		
		3.2km						1.5	560		
		3.6km						1.3	500		
GS	80	100	120	140	160						
ROD 2.8°	390	490	590	690	790						
FAF-MAPt	3:45	3:00	2:30	2:09	1:52						

© Navtech - mpto11iaip00

50 - 11

FALS

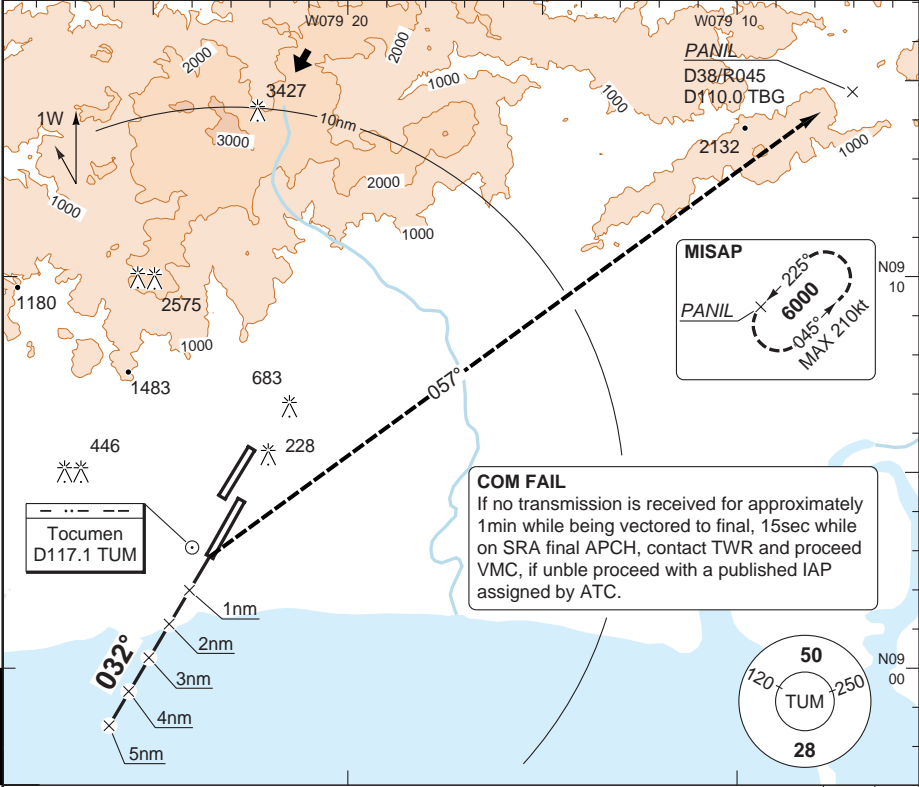
Change: New

SRA RWY 03R

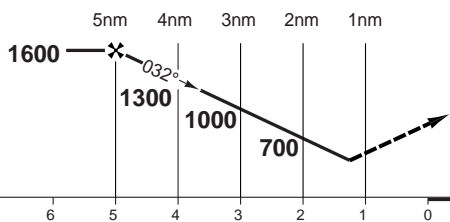
Tocumen INTL PANAMA

Panama CTL			APP	Tocumen TWR	GND	ATIS
125.5 N	133.0 S	123.6 E	119.7	118.1	121.9	127.7
133.3 N	123.9 S	126.9 W	121.2			

SRA	FAT 032°	THR Elev 23	AD Elev 135	TL ATC	TA 18000
-----	----------	-------------	-------------	--------	----------



COM FAIL
 If no transmission is received for approximately 1min while being vectored to final, 15sec while on SRA final APCH, contact TWR and proceed VMC, if unable proceed with a published IAP assigned by ATC.



Climbing right turn via 057° to **6000** to PANIL and hold.

ACFT	SRA	Circling a	a NA Northwest of RWY 03L/21R.	THR	2.9°	LDA 3050x45
A	460 (438) 1300m	580 (438) 1.6km C	C 500ft.	03R	ALT	10007x148ft
B		640 (500) 1.6km		5	1600	P 3° FALS
C		740 (600) 2.4km		4	1300	
D		840 (700) 3.6km		3	1000	
			2	700		
			1.3	460		
GS	80	100	120	140	160	
ROD 2.9°	410	510	610	710	810	
FAF-MAPt	3:45	3:00	2:30	2:09	1:52	

PANS OPS 50 - 12

© Navtech - mpto12aip00