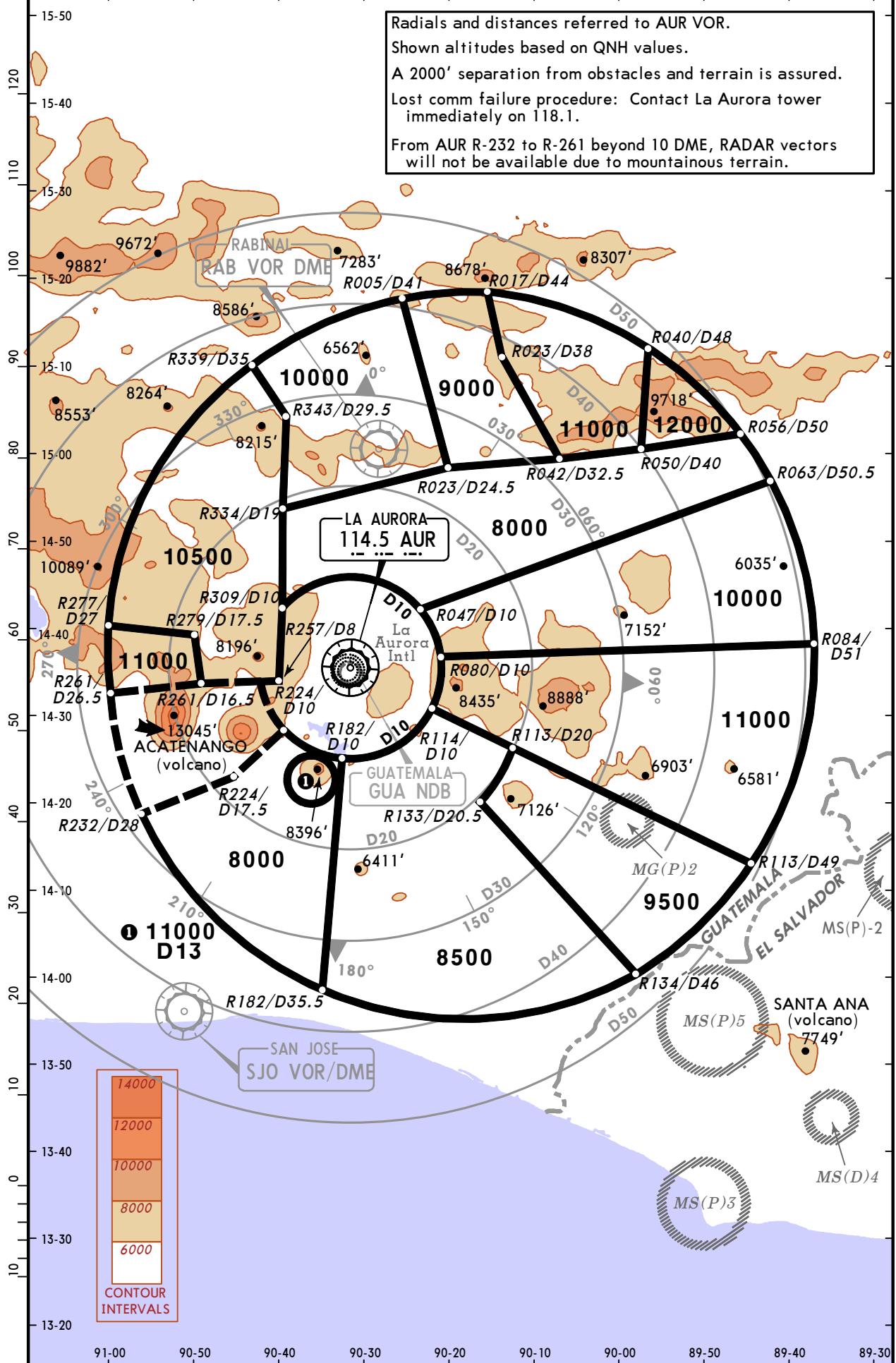


MGGT/GUA **JEPPESEN** **GUATEMALA CITY, GUATEMALA**
LA AURORA INTL 3 NOV 06 **(10-1R)** **RADAR MINIMUM ALTITUDES**

AURORA Approach (*R) 119.3	Apt Elev 4952'	Alt Set: INCHES Trans level: FL 200 Trans alt: 19500'
--------------------------------------	--------------------------	---

Radials and distances referred to AUR VOR.
 Shown altitudes based on QNH values.
 A 2000' separation from obstacles and terrain is assured.
 Lost comm failure procedure: Contact La Aurora tower immediately on 118.1.
 From AUR R-232 to R-261 beyond 10 DME, RADAR vectors will not be available due to mountainous terrain.



CHANGES: New chart.

MGGT/GUA
 LA AURORA INTL

JEPPESEN GUATEMALA CITY, GUATEMALA

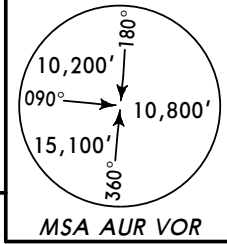
28 JAN 05 (10-2)

RNAV STAR

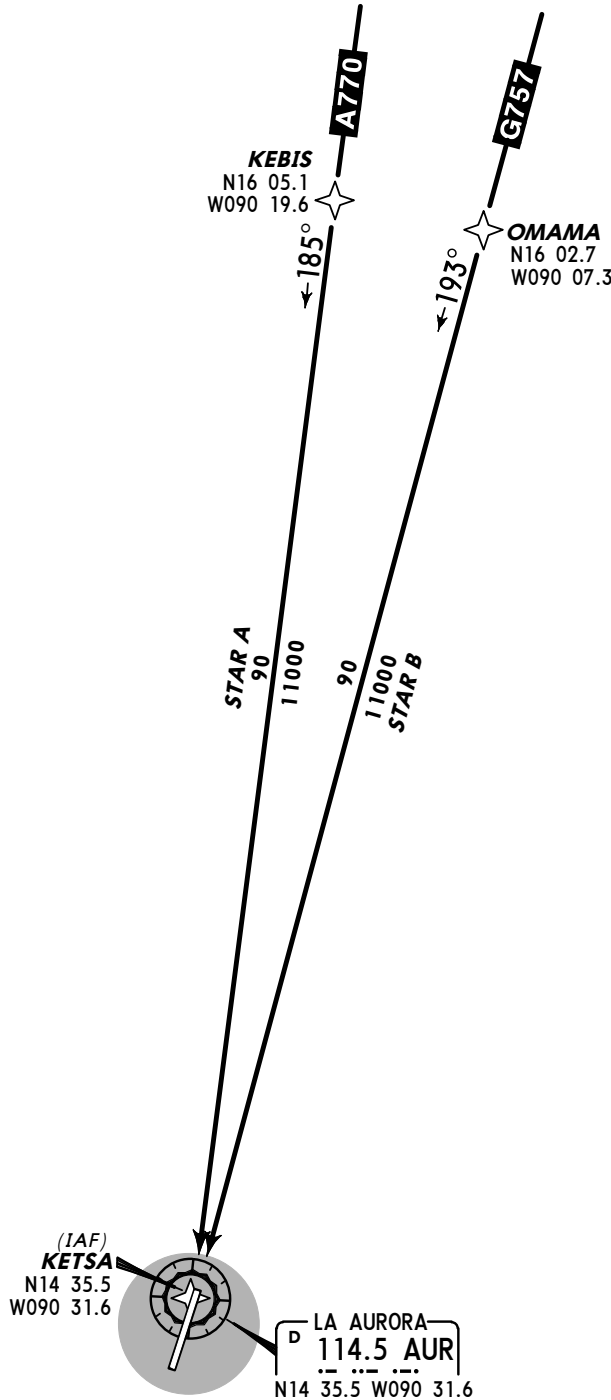
ATIS
126.5

Apt Elev
4952'

Alt Set: IN(hPa O/R)
 Trans level: FL 200 Trans alt: 19500'
 1. The final approach starts at IAF KETSA with authorization from ATC.
 2. The authorization from ATC requires that the pilot continues the RNAV STAR, at the MEA until ATC authorization for descent is received.



STAR RNAV A RWY 01
STAR RNAV B RWY 01



STAR	ROUTING
A	Airway A-770, from KEBIS to KETSA (AUR).
B	Airway G-757, from OMAMA to KETSA (AUR).

MGGT/GUA
LA AURORA INTL

JEPPESEN **GUATEMALA CITY, GUATEMALA**

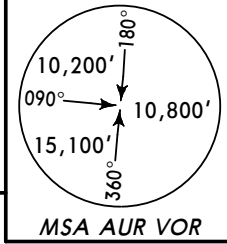
28 JAN 05 (10-2A)

RNAV STAR

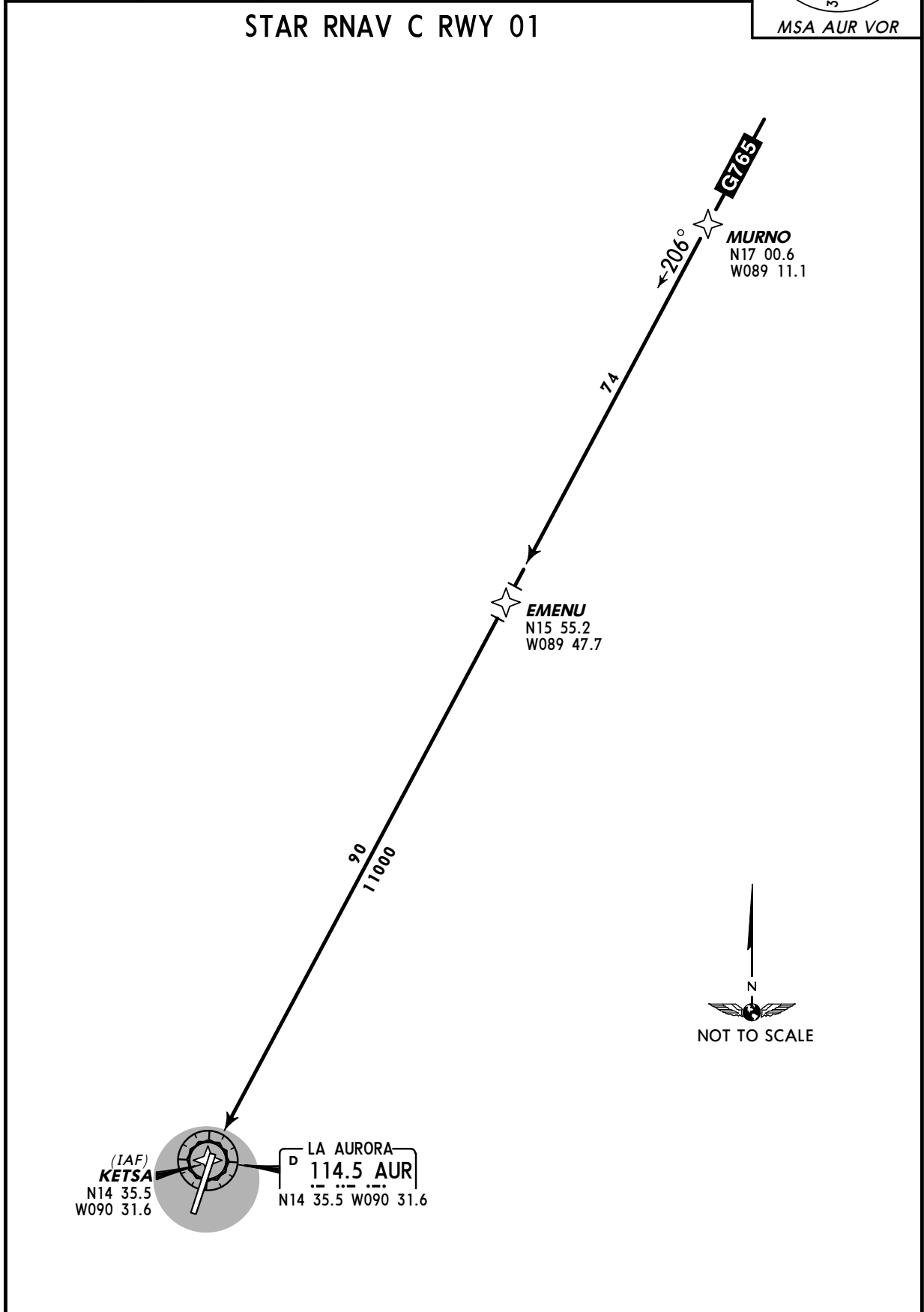
ATIS
126.5

Apt Elev
4952'

Alt Set: IN(hPa O/R)
 Trans level: FL 200 Trans alt: 19500'
 1. The final approach starts at IAF KETSA with authorization from ATC.
 2. The authorization from ATC requires that the pilot continues the RNAV STAR, at the MEA until ATC authorization for descent is received.



STAR RNAV C RWY 01



ROUTING

Airway G-765, from MURNO to EMENU, to KETSA (AUR).

MGGT/GUA
 LA AURORA INTL

JEPPESEN GUATEMALA CITY, GUATEMALA

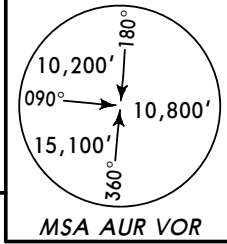
28 JAN 05 (10-2B)

RNAV STAR

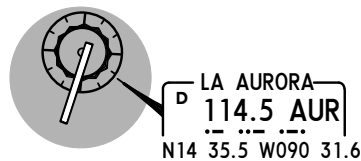
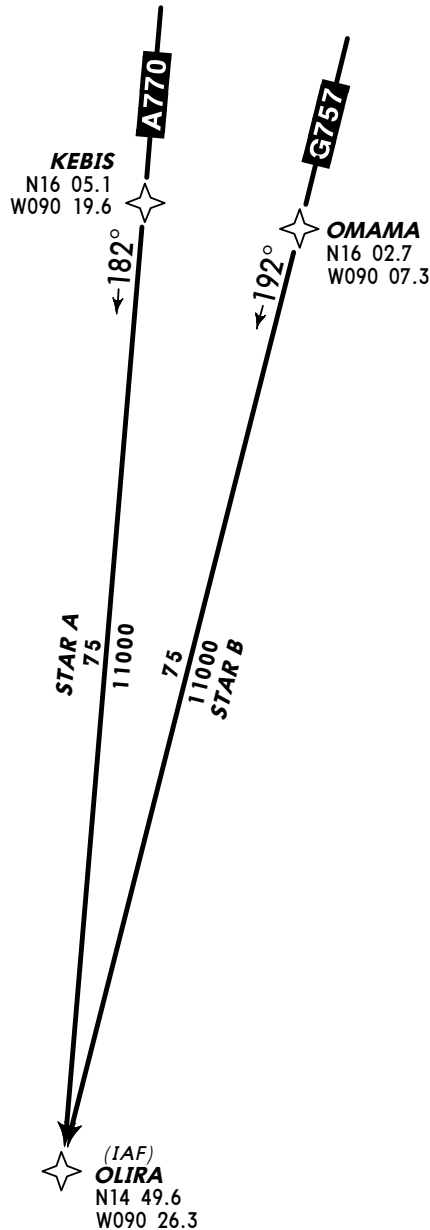
ATIS
126.5

Apt Elev
4952'

Alt Set: IN(hPa O/R)
 Trans level: FL 200 Trans alt: 19500'
 1. The final approach starts at IAF OLIRA with authorization from ATC.
 2. The authorization from ATC requires that the pilot continues the RNAV STAR, at the MEA until ATC authorization for descent is received.



STAR RNAV A RWY 19
STAR RNAV B RWY 19



Direct distance from OLIRA to:
 La Aurora Intl **16 NM**

STAR	ROUTING
A	Airway A-770, from KEBIS to OLIRA.
B	Airway G-757, from OMAMA to OLIRA.

MGGT/GUA
LA AURORA INTL

JEPPESEN GUATEMALA CITY, GUATEMALA

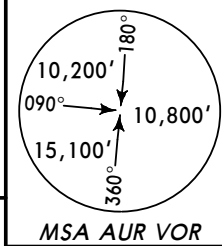
28 JAN 05 (10-2C)

RNAV STAR

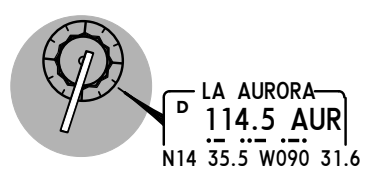
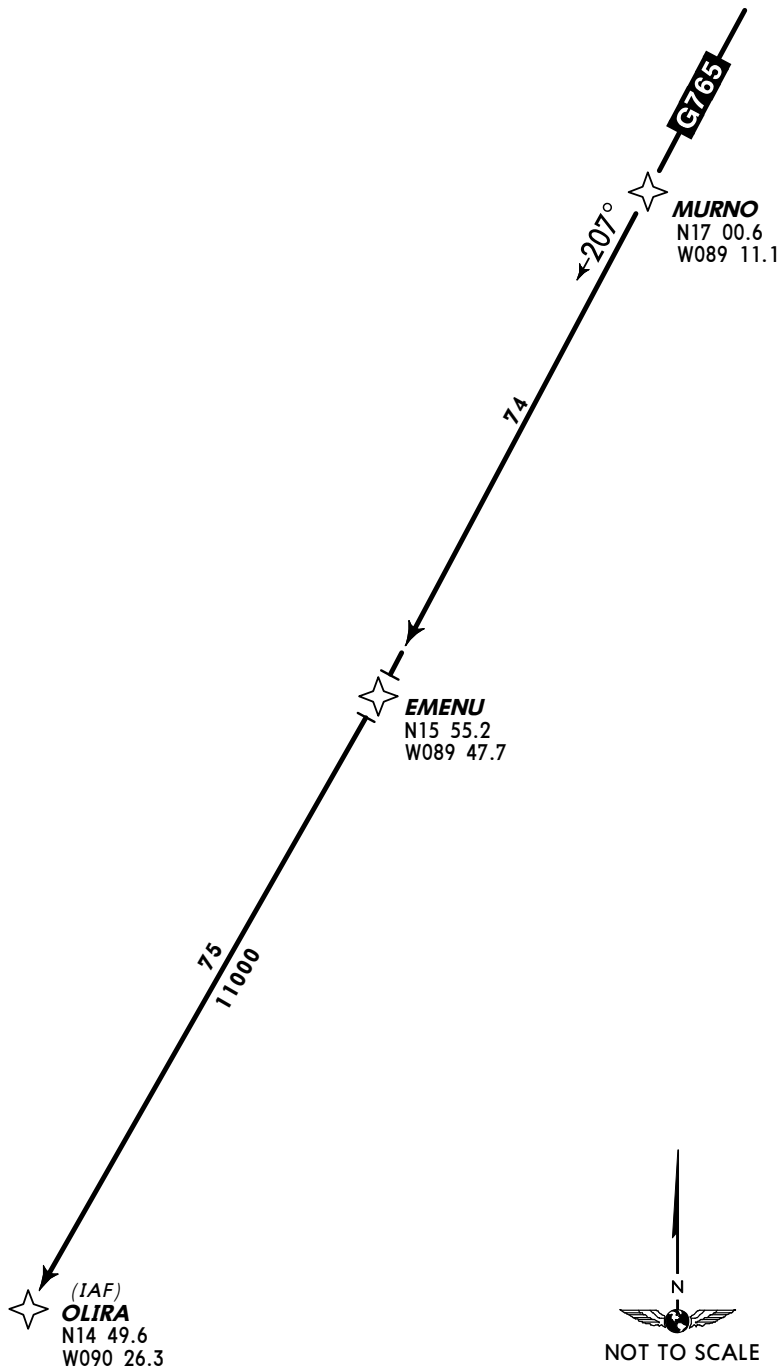
ATIS
126.5

Apt Elev
4952'

Alt Set: IN(hPa O/R)
 Trans level: FL 200 Trans alt: 19500'
 1. The final approach starts at IAF OLIRA with authorization from ATC.
 2. The authorization from ATC requires that the pilot continues the RNAV STAR, at the MEA until ATC authorization for descent is received.



STAR RNAV C RWY 19



Direct distance from OLIRA to:
 La Aurora Intl **16 NM**

ROUTING

Airway G-765, from MURNO to EMENU, to OLIRA.

TRANS LEVEL: FL 200
 TRANS ALT: 19500'

CANAL DEPARTURE
 (RWY 19)

DEPARTURE

Turn LEFT to climb on AUR R-169 to cross Canal Int at or above 9000'. Thence

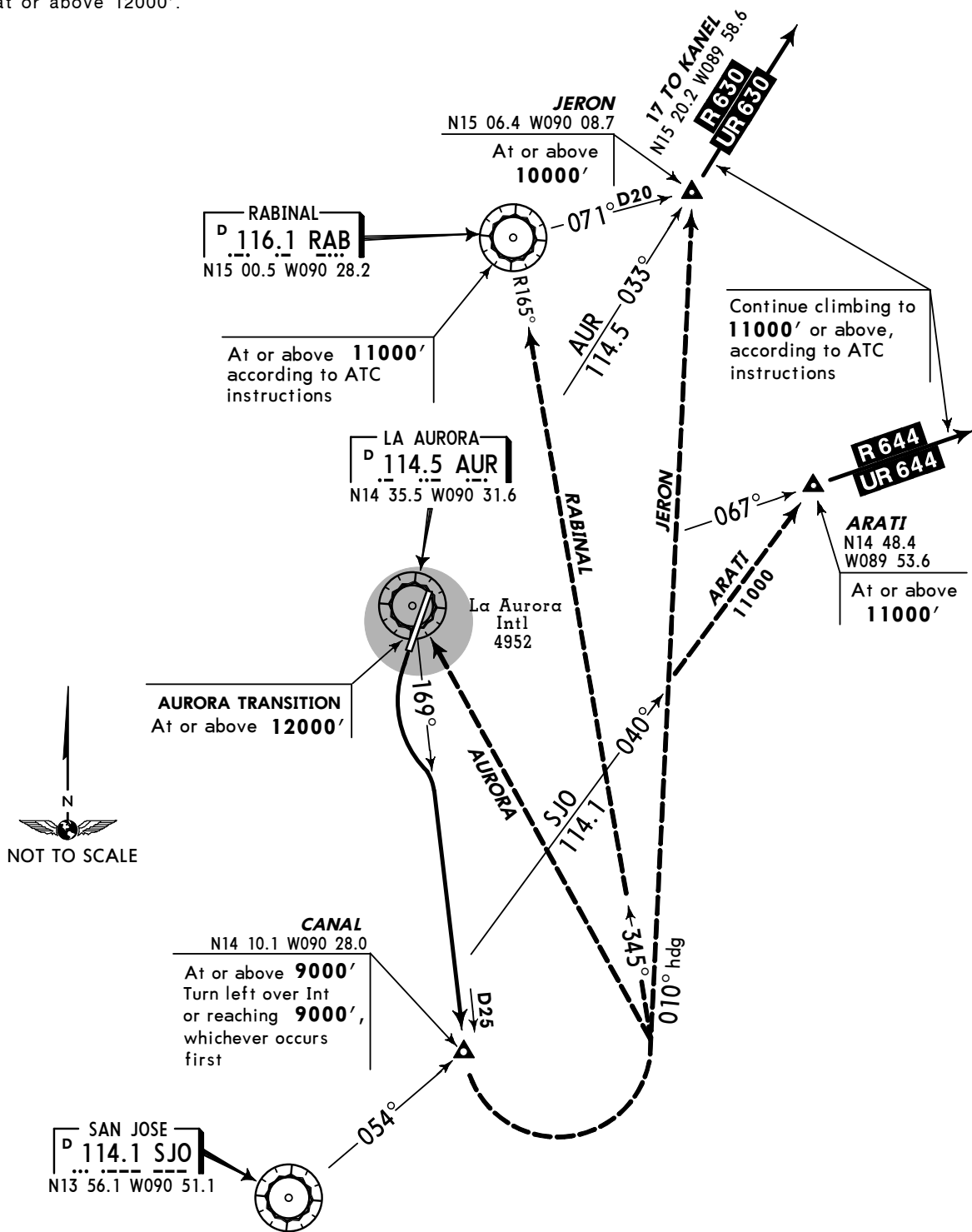
TRANSITIONS

ARATI: From over Canal Int or reaching 9000', whichever occurs first, turn LEFT to intercept and proceed via SJO R-040 to intercept R-644/UR-644. Continue climbing to 11000' or above, according to ATC instructions.

AURORA: From over Canal Int or reaching 9000', whichever occurs first, turn LEFT direct to AUR VOR. Cross AUR VOR at or above 12000'.

JERON: From over Canal Int or reaching 9000', whichever occurs first, turn LEFT heading 010° to intercept R-630/UR-630 and cross Jeron Int at or above 10000'. Continue climbing to 11000' or above, according to ATC instructions.

RABINAL: From over Canal Int or reaching 9000', whichever occurs first, turn LEFT to intercept and proceed inbound via RAB R-165 to RAB VOR. Continue climbing to 11000' or above, according with ATC instructions.

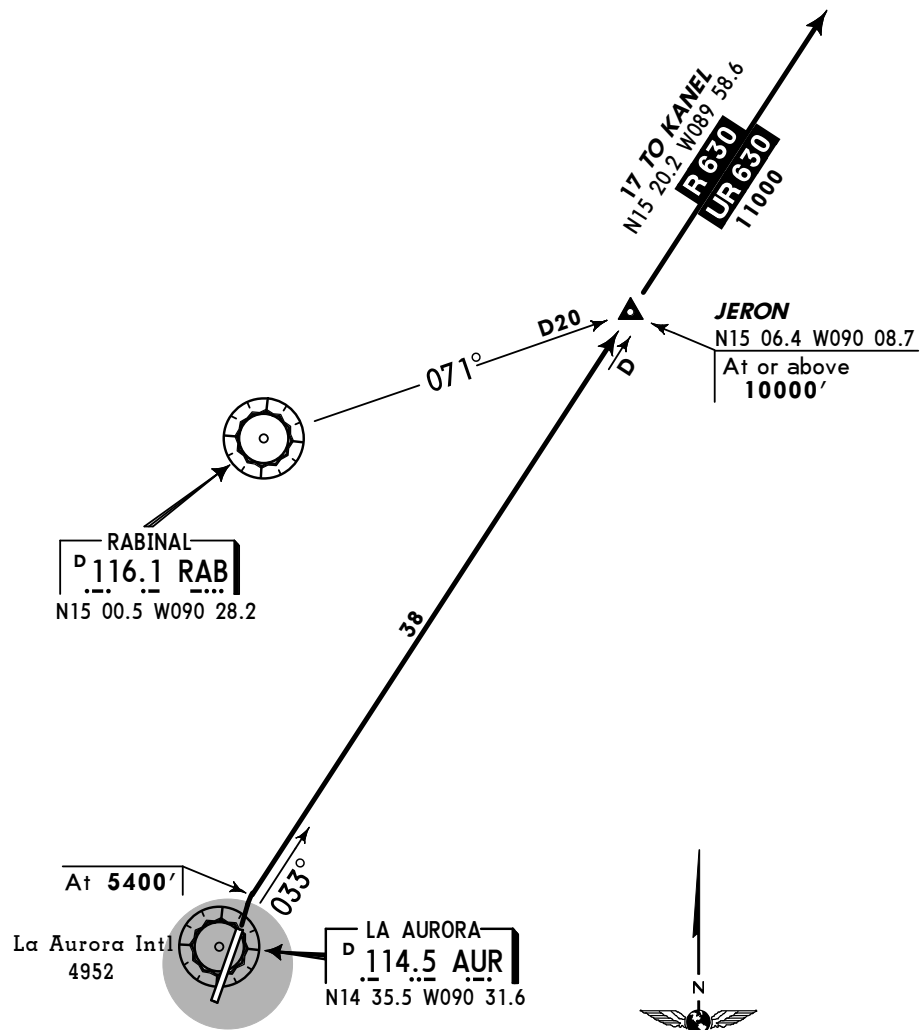


TRANS LEVEL: FL 200
TRANS ALT: 19500'

JERON DEPARTURE
(RWY 01)

DEPARTURE

Climb until reaching 5400', turn RIGHT to intercept AUR R-033 to cross Jeron Int at or above 10000', then continue climbing to 11000' or above, according to ATC instructions.



TRANS LEVEL: FL 200
TRANS ALT: 19500'

PALEN DEPARTURE
(RWY 01)

DEPARTURE

Climb on AUR R-012 until reaching 7000' or above turn RIGHT to intercept RAB R-150. Thence

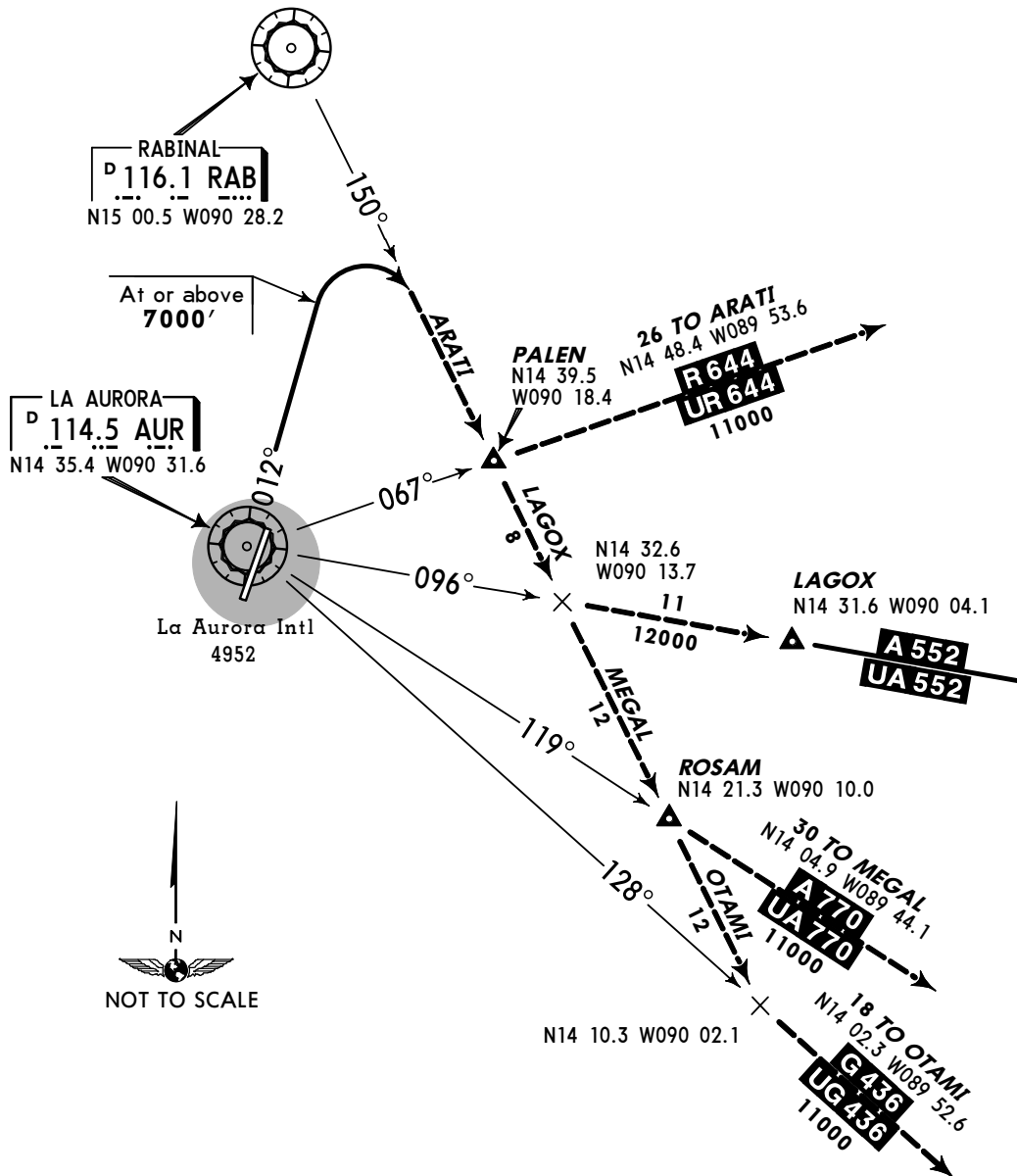
TRANSITIONS

ARATI: Continue climbing on RAB R-150 to intercept R-644/UR-644 at or above 11000', according to ATC instructions.

LAGOX: Continue climbing on RAB R-150 to intercept A-552/UA-552 at or above 12000', according to ATC instructions.

MEGAL: Continue climbing on RAB R-150 to intercept A-770/UA-770 at or above 11000', according to ATC instructions.

OTAMI: Continue climbing on RAB R-150 to intercept G-436/UG-436 at or above 11000', according to ATC instructions.



**GUATEMALA CITY,
 GUATEMALA**

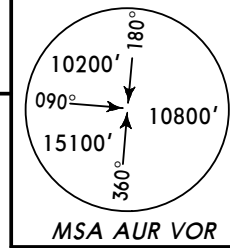
MGGT/GUA
LA AURORA INTL

JEPPESEN
 5 DEC 03 (10-3D)

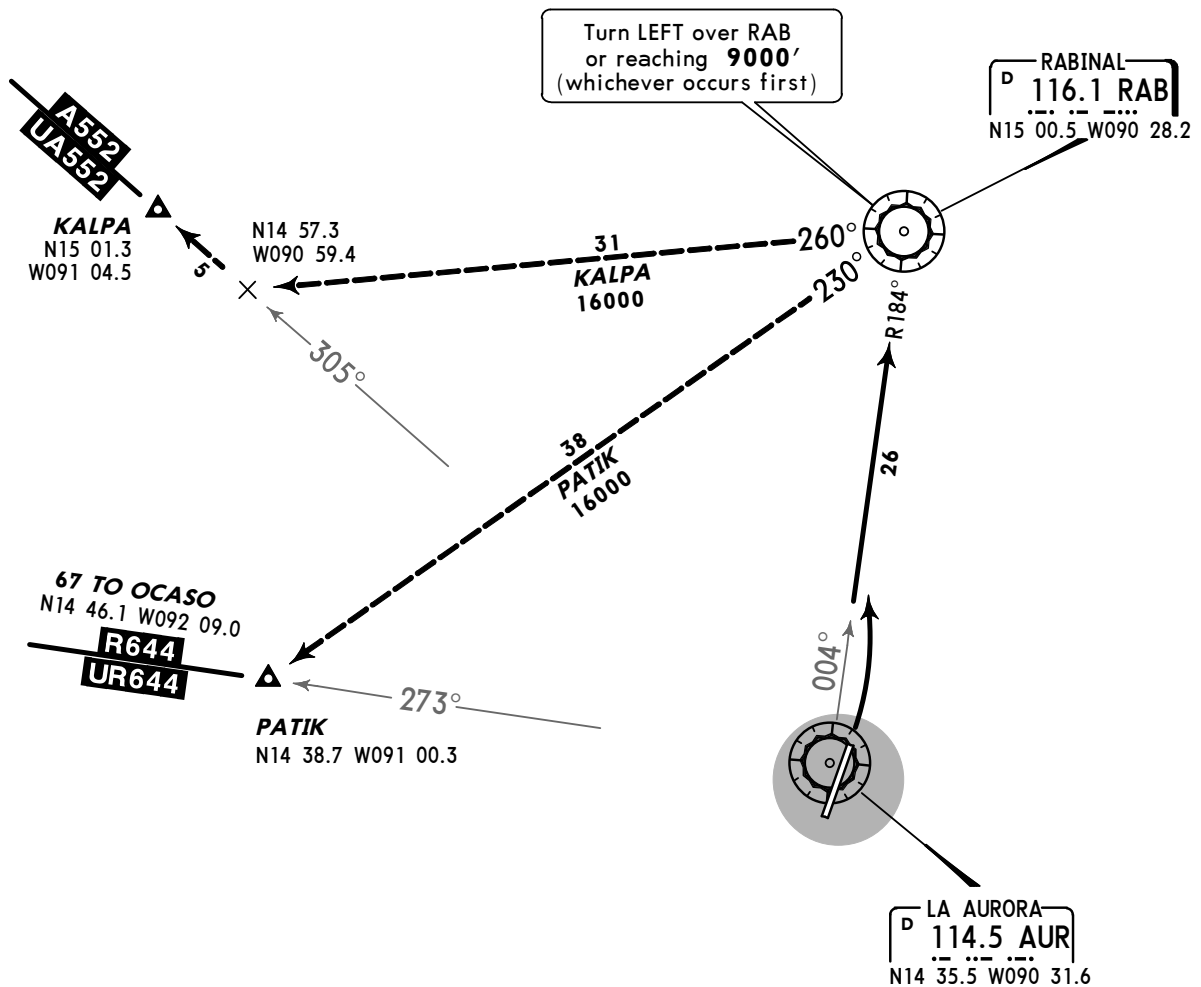
SID

Apt Elev
4952'

Trans level: FL200 Trans alt: 19500'



RABINAL 2 DEPARTURE
[RAB2]
 (RWY 01)



INITIAL CLIMB

Turn LEFT to climb on AUR R-004.

TRANSITIONS		ALTITUDE
KALPA	From over RAB or reaching 9000', whichever occurs first, turn LEFT to intercept RAB R-260 to intercept A-552/UA-552.	Continue climb to 16000' or above, according to ATC instructions.
PATIK	From over RAB or reaching 9000', whichever occurs first, turn LEFT to intercept RAB R-230 to intercept R-644/UR-644.	

**GUATEMALA CITY,
 GUATEMALA**

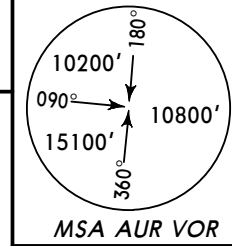
MGGT/GUA
LA AURORA INTL

JEPPESEN
 5 DEC 03 (10-3E)

SID

Apt Elev
4952'

Trans level: FL200 Trans alt: 19500'



SAN JOSE ALFA DEPARTURE

[SJOA]
 (RWY 01)

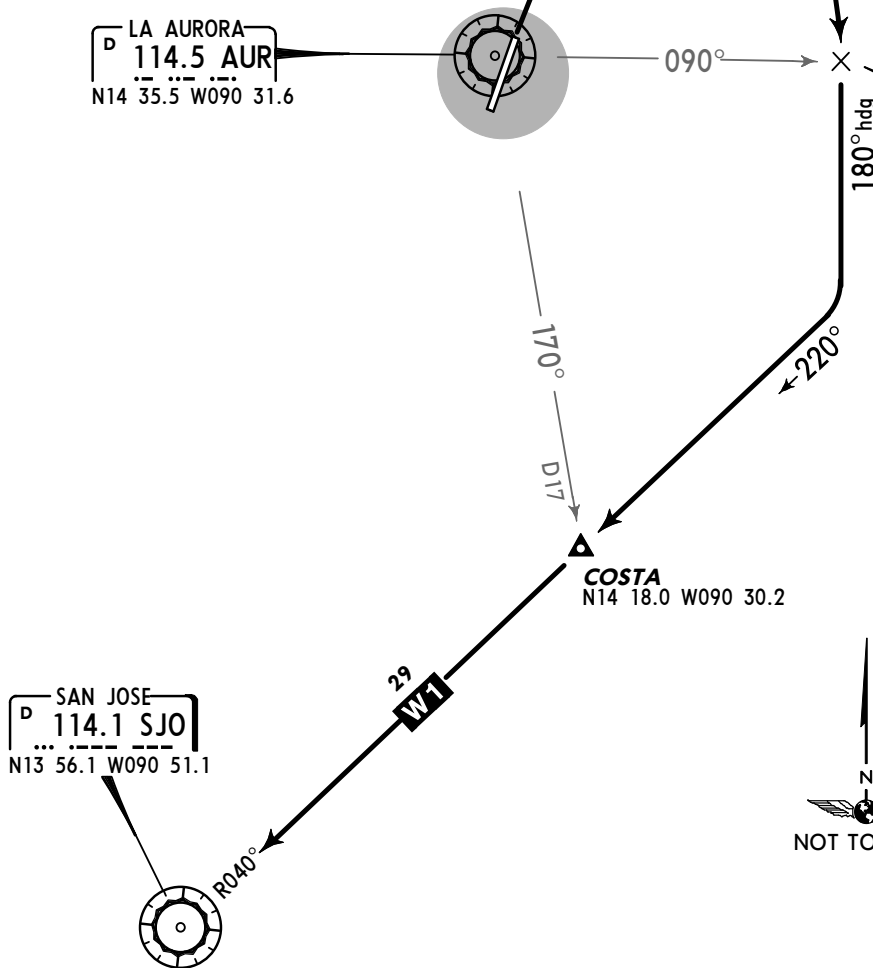
D10 AUR
 [D030J]
 N14 43.3
 W090 25.8

At or above
9000'

At
6000'

LA AURORA
 114.5 AUR
 N14 35.5 W090 31.6

[D090J]
 N14 34.8
 W090 21.3
 At or above
11000'



This SID requires a minimum climb gradient of 400' per NM.

Gnd speed-KT	75	100	150	200	250	300
400' per NM	500	666	1000	1333	1666	2000

ROUTING

Climb runway heading until **6000'**, then RIGHT climbing turn to intercept AUR R-030, continue to D10 AUR. Fly the AUR 10 DME Arc until crossing AUR R-090, then heading 180° to intercept SJO R-040, then according to ATC instructions.

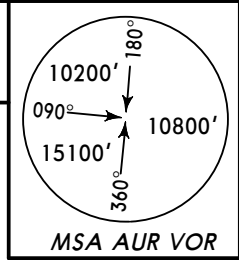
**GUATEMALA CITY,
 GUATEMALA**

MGGT/GUA
 LA AURORA INTL

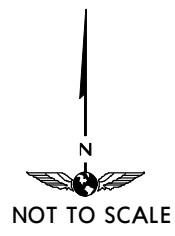
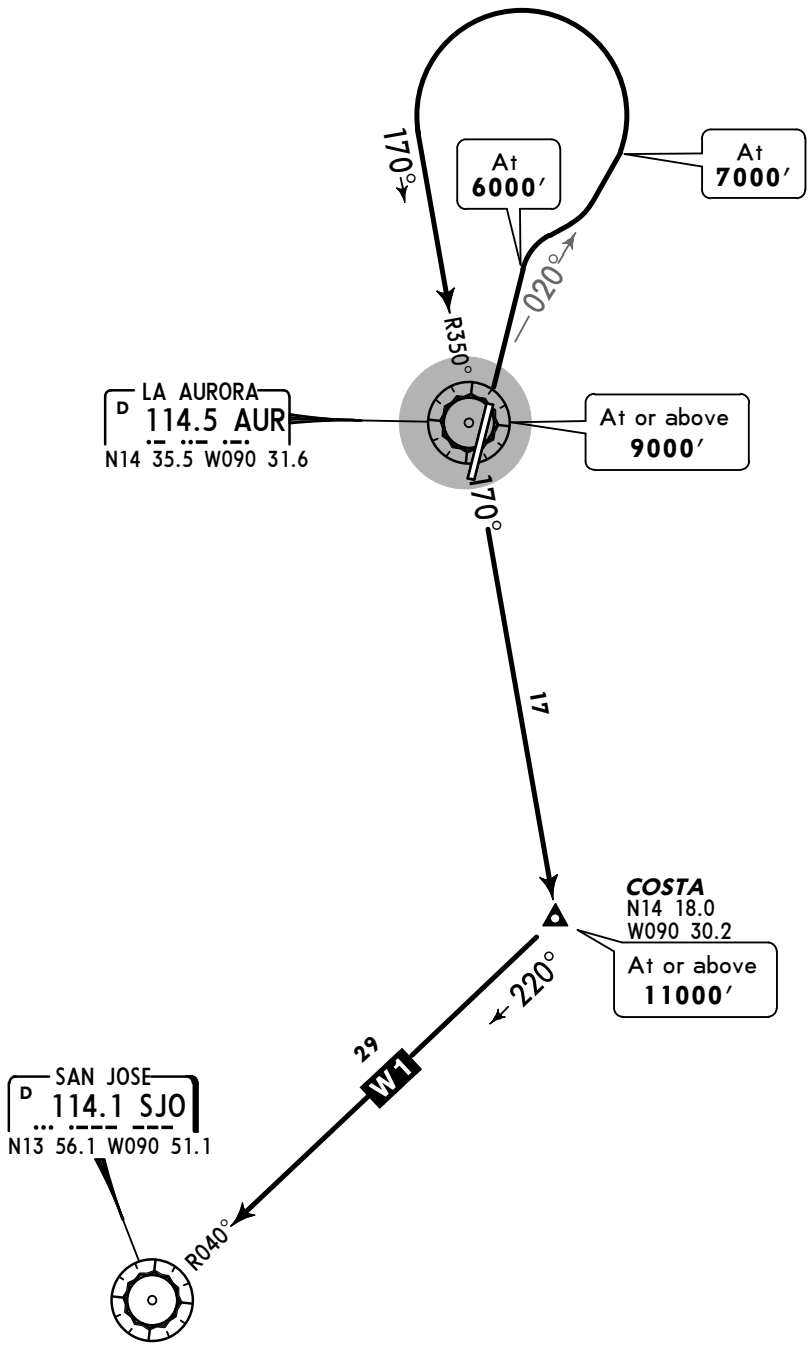
JEPPESEN
 7 NOV 03 (10-3F)

SID

Apt Elev 4952' Trans level: FL200 Trans alt: 19500'



**SAN JOSE BRAVO DEPARTURE
 [SJOB]
 (RWY 01)**



This SID requires a minimum climb gradient of 300' per NM.

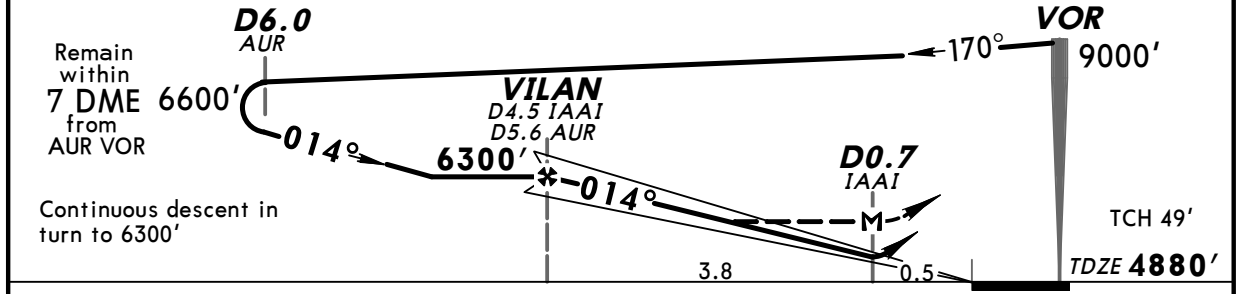
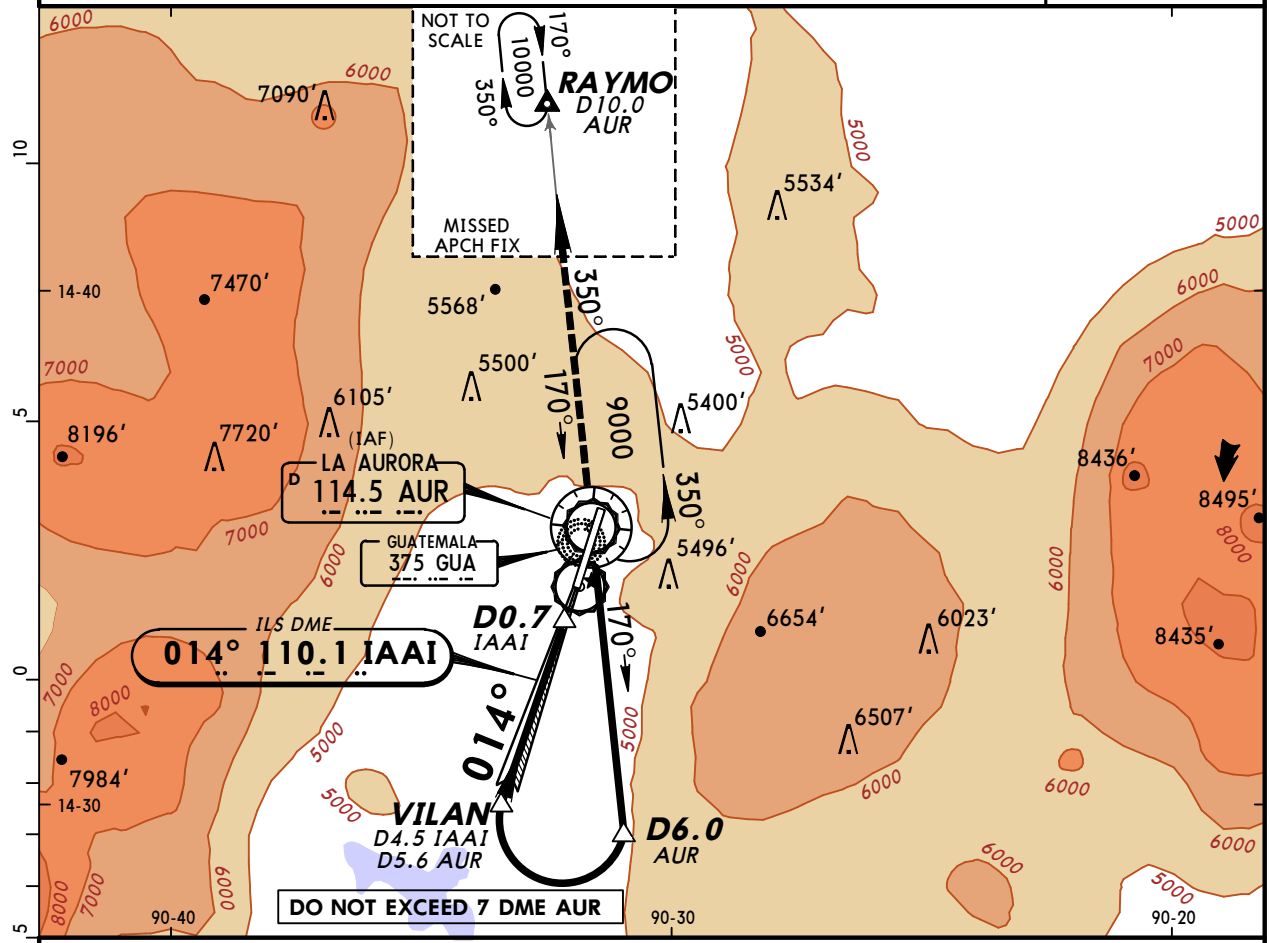
Gnd speed-KT	75	100	150	200	250	300
300' per NM	375	500	750	1000	1250	1500

ROUTING

Climb runway heading until **6000'**, then RIGHT climbing turn to intercept AUR R-020, continue to **7000'**, then LEFT climbing turn to intercept AUR R-350, and continue climb to AUR. Continue on AUR R-170 to COSTA and according to ATC instructions.

MGGT/GUA **JEPPESEN GUATEMALA CITY, GUATEMALA**
LA AURORA INTL 8 FEB 08 **(11-1)** **ILS DME-1 Rwy 01**

ATIS 126.5		AURORA Approach (*R) 119.3		AURORA Tower 118.1		Ground 121.9	
LOC IAAI 110.1	Final Apch Crs 014°	Minimum Alt VILAN 6300' (1420')	ILS DA(H) 5100' (220')	Apt Elev 4952' TDZE 4880'			
MISSED APCH: Climb on course of 014° until reaching AUR VOR, then LEFT turn outbound on AUR VOR R-350 and continue climbing until reaching 10000' at RAYMO D10.0 AUR and hold. Request instructions from APP.							
Alt Set: INCHES		Trans level: FL 200		Trans alt: 19500'		MSA AUR VOR	

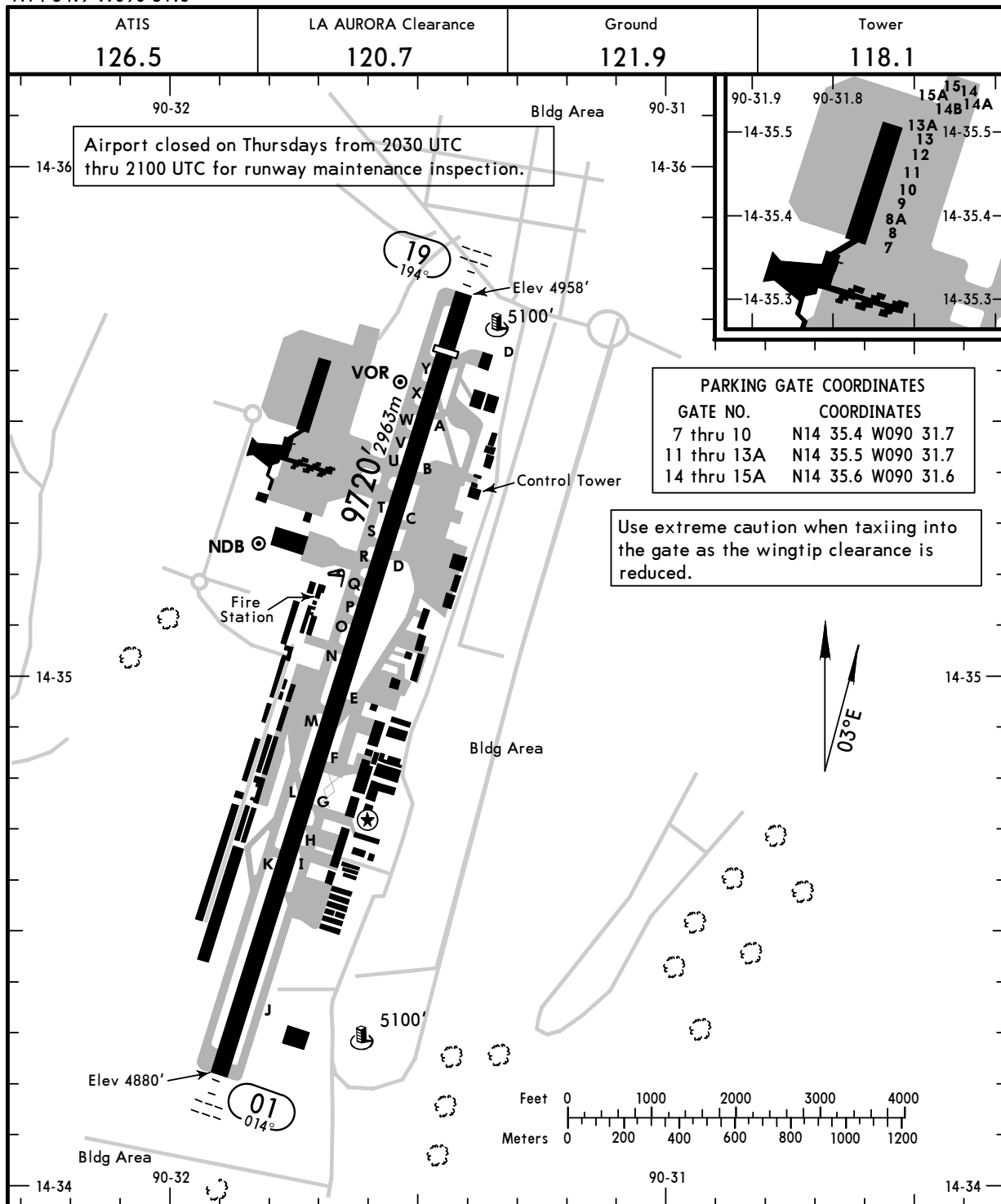


Gnd speed-Kts	70	90	100	120	140	160	PAPI SALS REIL	014°	AUR 114.5	LT	AUR 114.5	10000'
GS	3.00°	377	484	538	646	753						
MAP at D0.7 IAAI												

STRAIGHT-IN LANDING RWY 01				CEILING REQUIRED		CIRCLE-TO-LAND	
ILS DA(H) 5100' (220')		LOC (GS out) MDA(H) 5340' (460')		TERPS		Not Authorized East of Rwy	
FULL	ALS out	CEILING-VISIBILITY	ALS out	Max Kts	MDA(H)	CEIL-VIS	
A				90	5460' (508')	600'-1	
B			500'-1	120	5460' (508')	600'-1 1/2	
C	250'-3/4			140	5460' (508')	600'-1 1/2	
D			500'-1 1/2	165	5680' (728')	800'-2 1/4	

MGGT/GUA
 Apt Elev **4952'**
 N14 34.9 W090 31.6

JEPPESEN GUATEMALA CITY, GUATEMALA
 8 FEB 08 **(11-1)**
LA AURORA INTL



ADDITIONAL RUNWAY INFORMATION

RWY	USABLE LENGTHS	LANDING BEYOND		TAKE-OFF	WIDTH
		Threshold	Glide Slope		
01 19	HIRL SALS REIL PAPI (angle 3.0°)	8998'	2743m		197' 60m

TAKE-OFF

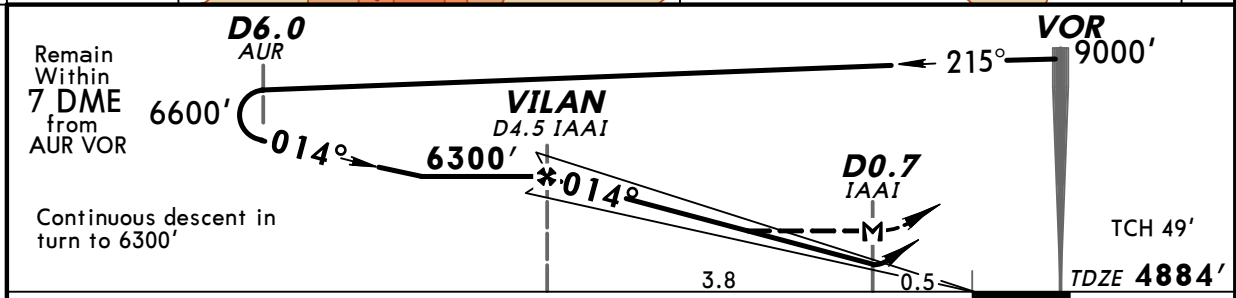
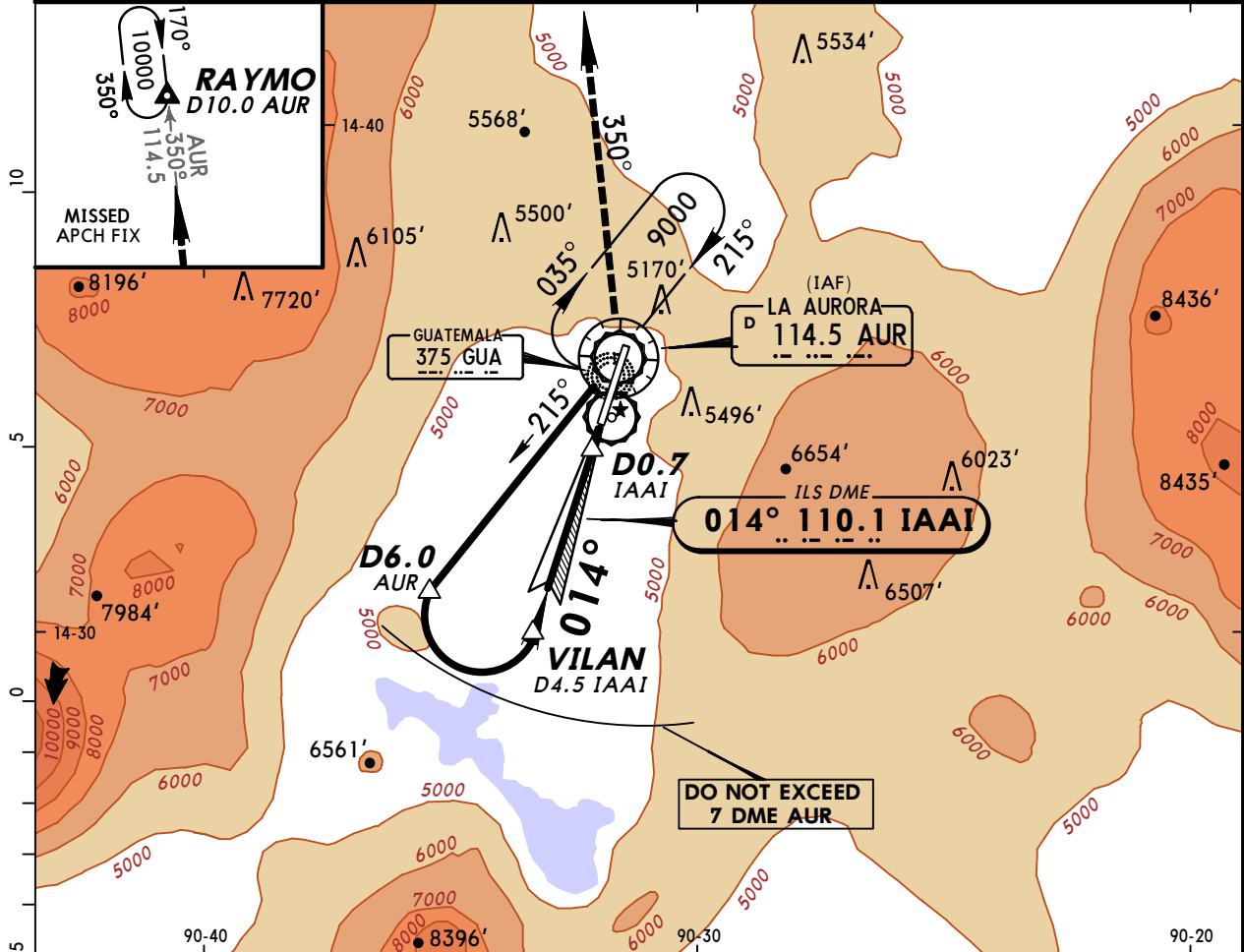
	Rwy 01	Rwy 19
1 & 2 Eng	300' - 1	700' - 1
3 & 4 Eng		

MGGT/GUA
LA AURORA INTL

JEPPESENGUATEMALA CITY, GUATEMALA
 7 NOV 03 (11-2)
ILS DME-2 Rwy 01

BRIEFING STRIP™

ATIS 126.5	AURORA Approach (*R) 119.3	AURORA Tower 118.1	Ground 121.9
LOC IAAI 110.1	Final Apch Crs 014°	Minimum Alt VILAN 6300' (1416')	ILS DA(H) 5100' (216')
Apt Elev 4952' TDZE 4884'			
MISSED APCH: Climb on course of 014° until reaching AUR VOR, then LEFT turn outbound on AUR VOR R-350 and continue climbing until reaching 10000' at RAYMO D10.0 AUR and hold. Request instructions from APP.			
Alt Set: INCHES		Trans level: FL 200	Trans alt: 19500'
			MSA AUR VOR

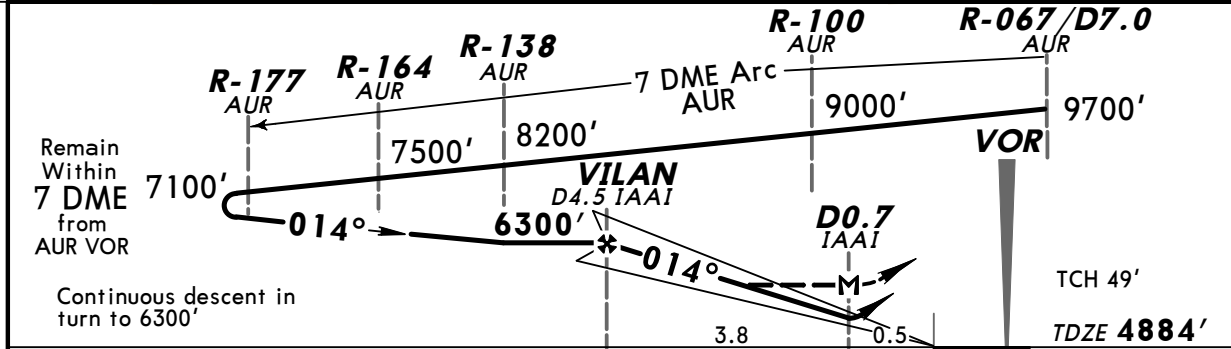
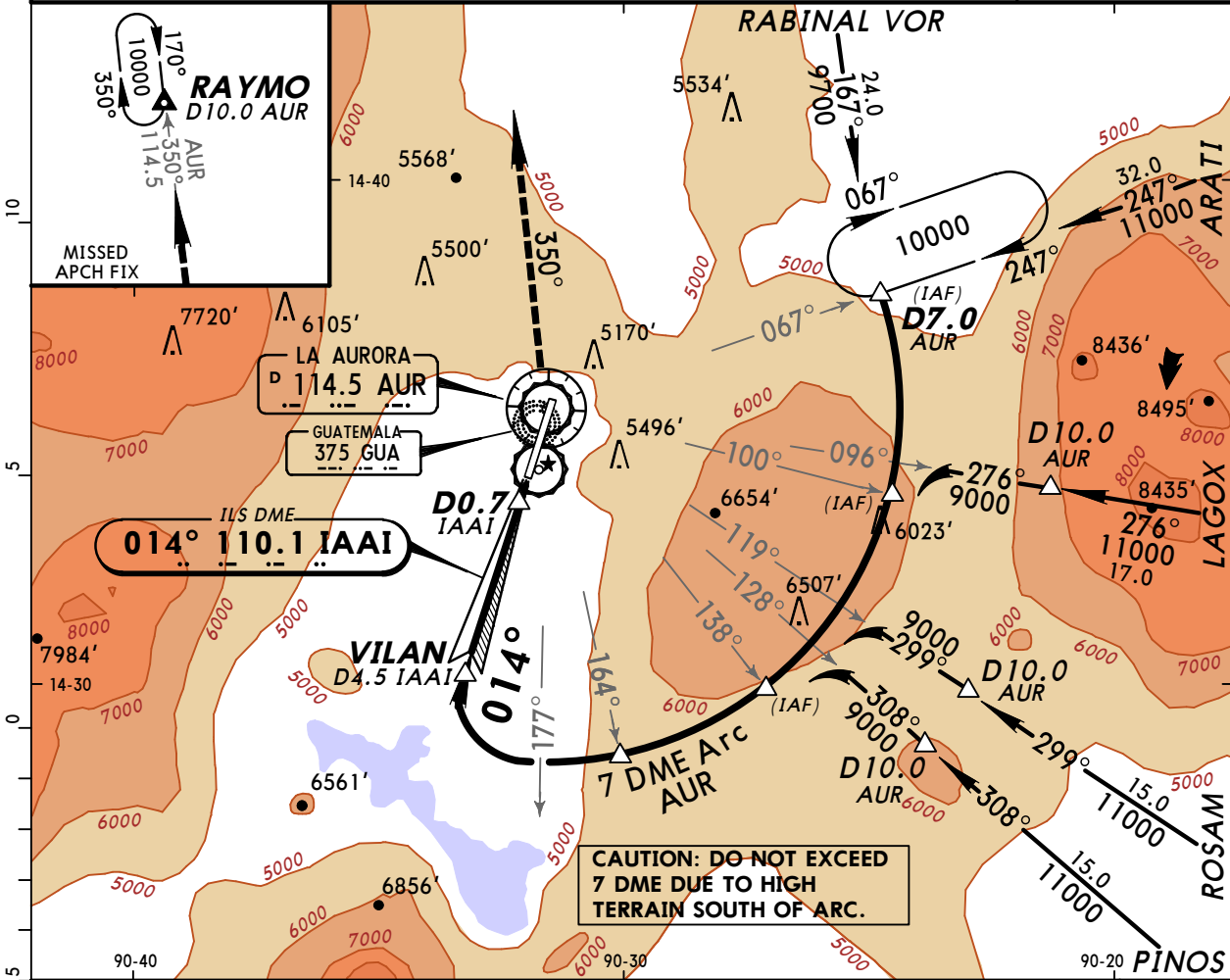


Gnd speed-Kts	70	90	100	120	140	160	SALS	014°	AUR	AUR	10000'
GS	3.00°	377	484	538	646	753	REIL PAPI	↑	114.5	LT	114.5
MAP at D0.7 IAAI											R-350

STRAIGHT-IN LANDING RWY 01		CEILING REQUIRED		CIRCLE-TO-LAND	
ILS DA(H) 5100' (216')		LOC (GS out) MDA(H) 5340' (456')		Not Authorized East of Rwy	
FULL	ALS out	ALS out	Max Kts	MDA(H)	CEIL-VIS
A			90	5460' (508')	600' - 1
B			120	5460' (508')	600' - 1
C	250' - 3/4	500' - 1	140	5460' (508')	600' - 1 1/2
D		500' - 1 1/2	165	5680' (728')	800' - 2 1/4

MGGT/GUA **JEPPESEN GUATEMALA CITY, GUATEMALA**
LA AURORA INTL 7 NOV 03 **(11-3)** **ILS DME Arc Rwy 01**

ATIS 126.5		AURORA Approach (*R) 119.3		AURORA Tower 118.1		Ground 121.9	
LOC IAAI 110.1	Final Apch Crs 014°	Minimum Alt VILAN 6300' (1416')	ILS DA(H) 5100' (216')	Apt Elev 4952'		TDZE 4884'	
MISSED APCH: Climb on course of 014° until reaching AUR VOR, then LEFT turn outbound on AUR VOR R-350 and continue climbing until reaching 10000' at RAYMO D10.0 AUR and hold. Request instructions from APP.							
Alt Set: INCHES		Trans level: FL 200		Trans alt: 19500'		MSA AUR VOR	



Gnd speed-Kts	70	90	100	120	140	160	REIL 014°	AUR	AUR	10000'
Gs	3.00°	377	484	538	646	861				
MAP at D0.7 IAAI							PAPI	114.5	LT	R-350

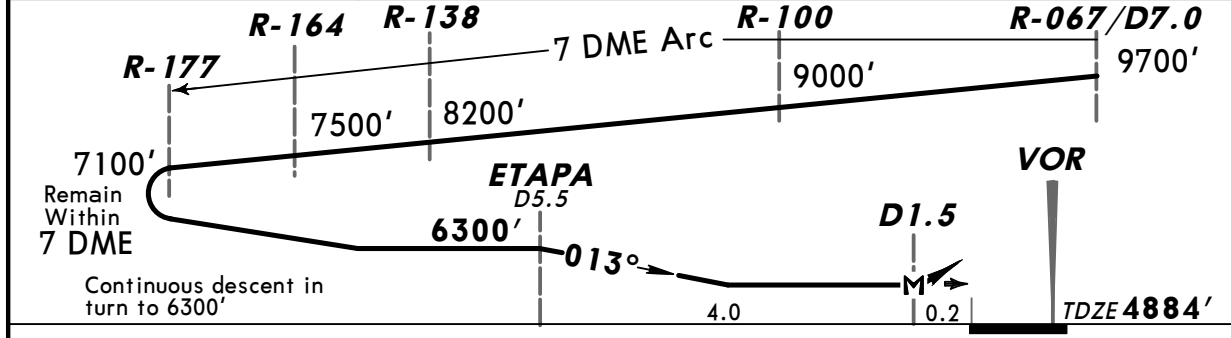
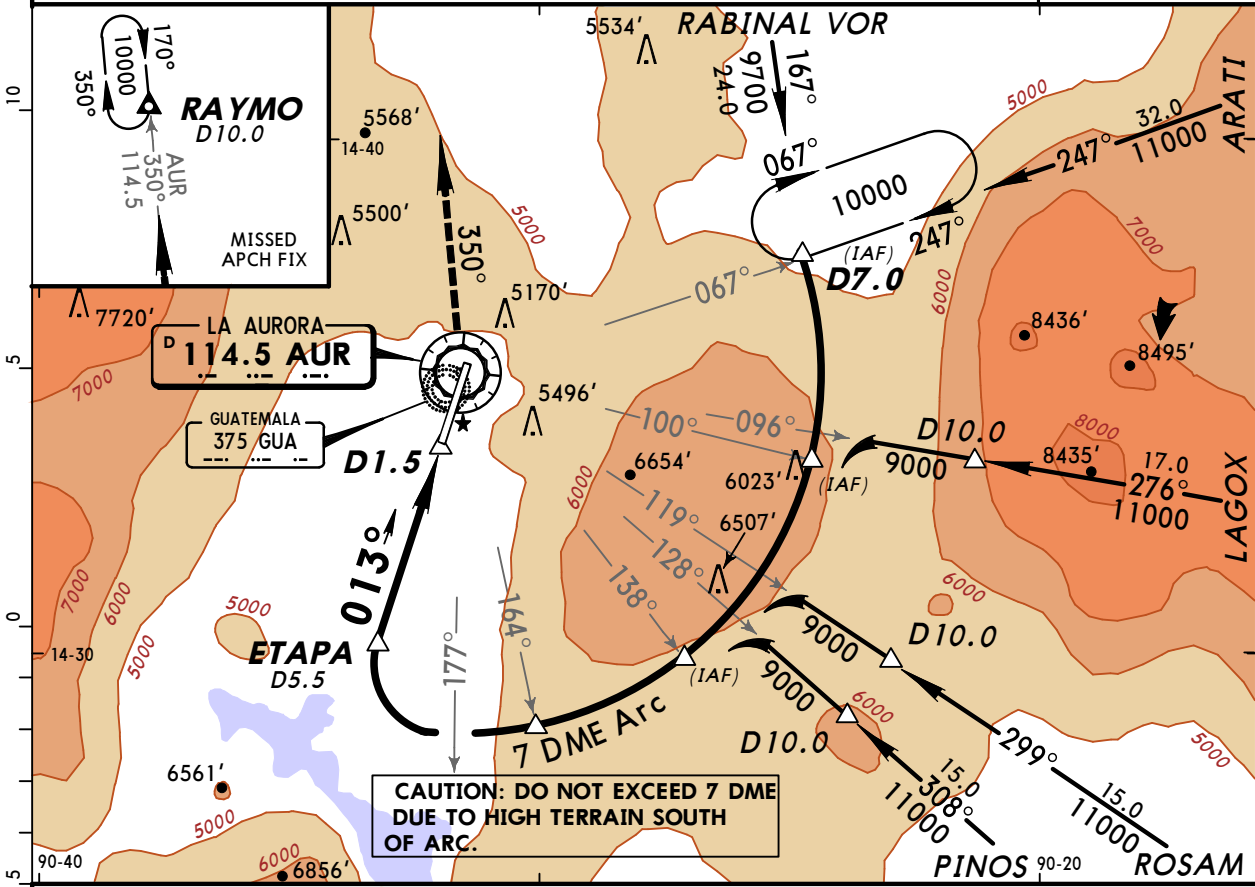
STRAIGHT-IN LANDING RWY01			CEILING REQUIRED		CIRCLE-TO-LAND	
ILS DA(H) 5100' (216')			LOC (GS out) MDA(H) 5340' (456')		Not Authorized East of Rwy	
FULL	ALS out	ALS out	Max Kts	MDA(H)	CEIL-VIS	
CEILING-VISIBILITY			90	5460' (508')	600'-1	
250' - 3/4			120	5460' (508')	600'-1 1/2	
500' - 1			140	5460' (508')	600'-1 1/2	
500' - 1 1/2			165	5680' (728')	800'-2 1/4	

MGGT/GUA
LA AURORA INTL

JEPPESEN 7 NOV 03 **(13-1)**

GUATEMALA CITY, GUATEMALA
VOR DMÉ Arc Rwy 01

ATIS 126.5		AURORA Approach (*R) 119.3		AURORA Tower 118.1		Ground 121.9	
VOR AUR 114.5	Final Apch Crs 013°	Minimum Alt ETAPA 6300' (1416')	MDA(H) 5340' (456')	Apt Elev 4952' TDZE 4884'			
MISSED APCH: Climb on course of 013° until reaching AUR VOR, then LEFT turn outbound on AUR VOR R-350 and continue climbing until reaching 10000' at RAYMO D10.0 and hold. Request instructions from APP.							
Alt Set: INCHES		Trans level: FL 200		Trans alt: 19500'		MSA AUR VOR	



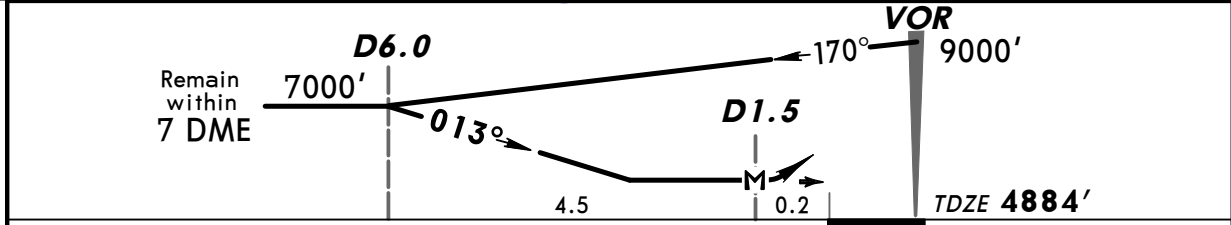
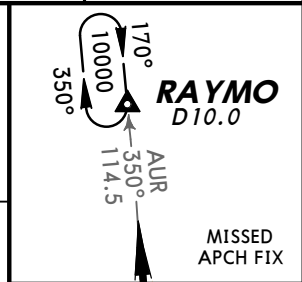
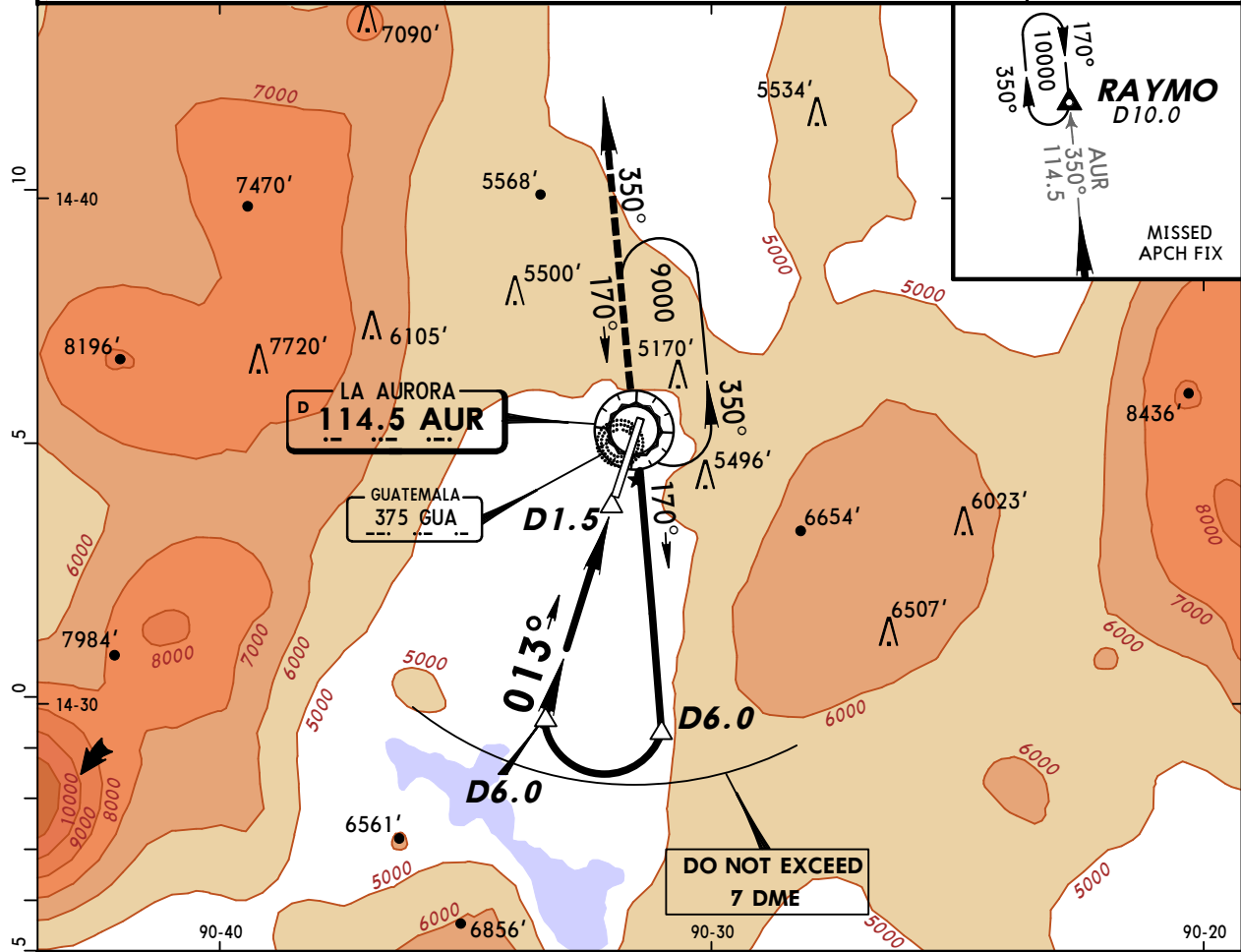
REIL	SALS	013°	AUR	AUR	10000'
PAPI		↑	114.5	LT	↑
MAP at D1.5					

STRAIGHT-IN LANDING RWY 01 CEILING REQUIRED			CIRCLE-TO-LAND	
MDA(H) 5340' (456')			Not Authorized East of Rwy	
CEILING-VISIBILITY			MDA(H)	CEIL-VIS
A		ALS out		
B	500' - 1		5460' (508')	600' - 1
C			5460' (508')	600' - 1½
D	500' - 1½		5680' (728')	800' - 2¼

MGGT/GUA
LA AURORA INTL

JEPPESENGUATEMALA CITY, GUATEMALA
 7 NOV 03 (13-2)
VOR DME-1 Rwy 01

ATIS 126.5		AURORA Approach (*R) 119.3		AURORA Tower 118.1		Ground 121.9	
VOR AUR 114.5	Final Apch Crs 013°	No FAF		MDA(H) 5340' (456')	Apt Elev 4952' TDZE 4884'		<p>MSA AUR VOR</p>
<p>MISSED APCH: Climb on course of 013° until reaching AUR VOR, then LEFT turn outbound on AUR VOR R-350 and continue climbing until reaching 10000' at RAYMO D10.0 and hold. Request instructions from APP.</p>							
Alt Set: INCHES		Trans level: FL 200		Trans alt: 19500'			



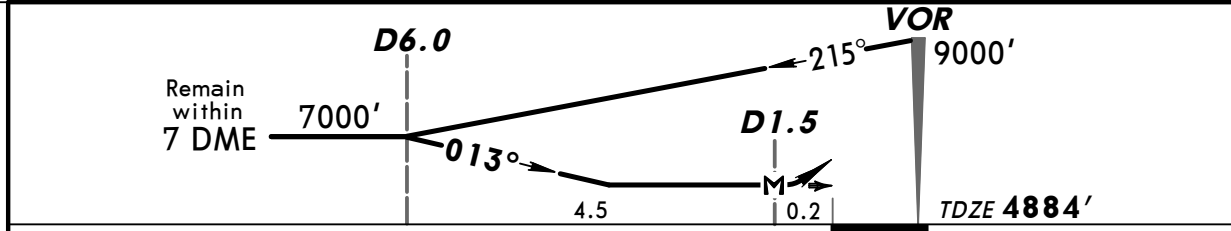
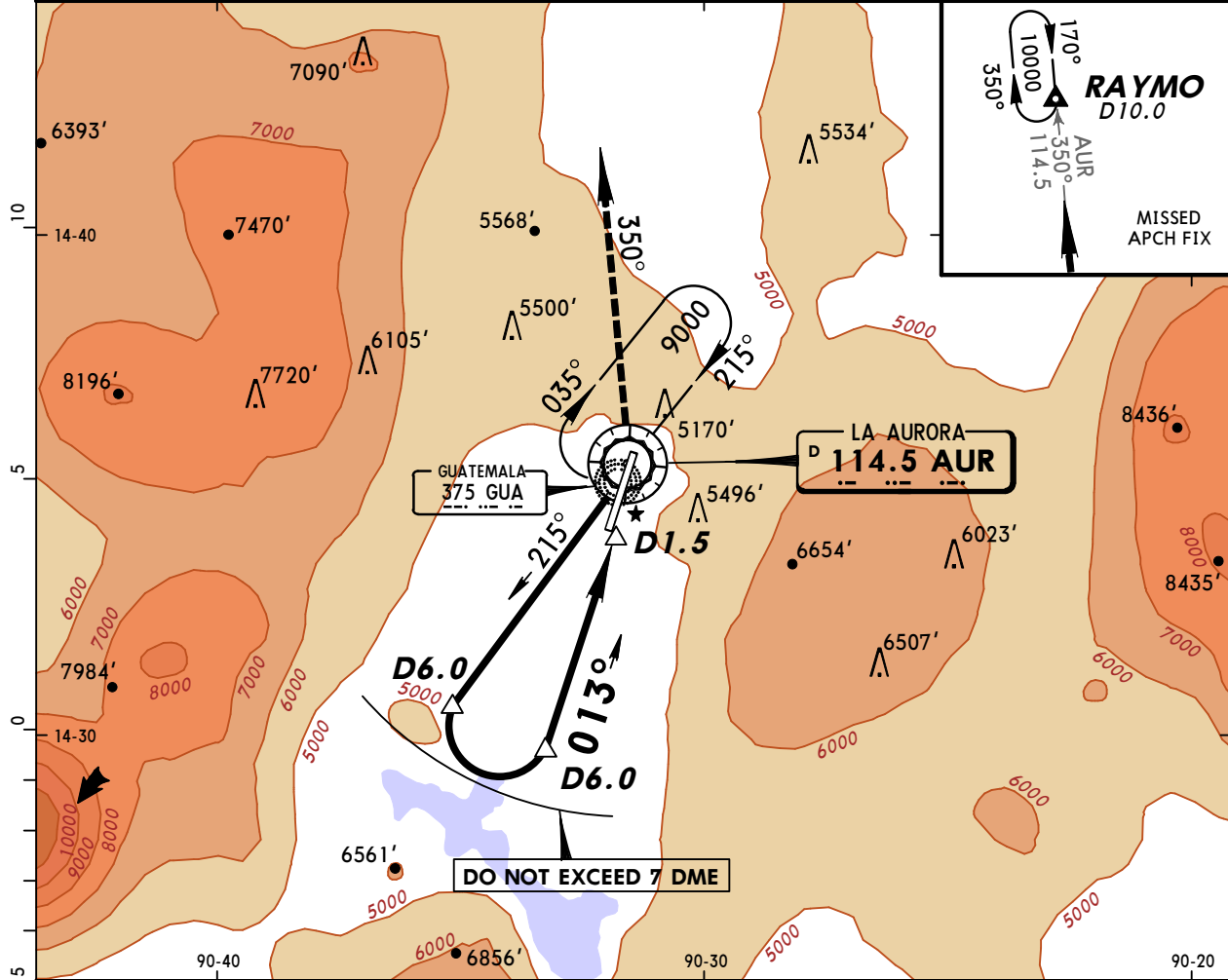
REIL	SALS	013°	AUR	LT	AUR	10000'
PAPI		↑	114.5		R-350	↑
MAP at D1.5						

STRAIGHT-IN LANDING RWY01			CEILING REQUIRED		CIRCLE-TO-LAND	
MDA(H) 5340' (456')			Not Authorized East of Rwy			
CEILING-VISIBILITY			Max Kts	MDA(H)	CEIL-VIS	
A	ALS out		90	5460' (508')	600' - 1	
B	500' - 1		120	5460' (508')	600' - 1½	
C			140	5460' (508')	600' - 1½	
D	500' - 1½		165	5680' (728')	800' - 2¼	

MGGT/GUA
LA AURORA INTL

JEPPESEN GUATEMALA CITY, GUATEMALA
 23 SEP 05 (13-3) Eff 29 Sep
VOR DME-2 Rwy 01

ATIS 126.5		AURORA Approach (*R) 119.3		AURORA Tower 118.1		Ground 121.9	
VOR AUR 114.5	Final Apch Crs 013°	No FAF		MDA(H) 5340' (456')	Apt Elev 4952' TDZE 4884'		
MISSED APCH: Climb on course of 013° until reaching AUR VOR, then LEFT turn outbound on AUR VOR R-350 and continue climbing until reaching 10000' at RAYMO INT/D10.0 and hold. Request instructions from APP.							
Alt Set: INCHES		Trans level: FL 200		Trans alt: 19500'		MSA AUR VOR	



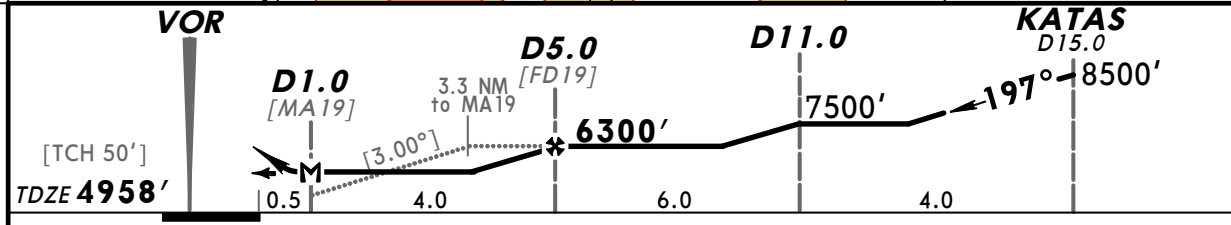
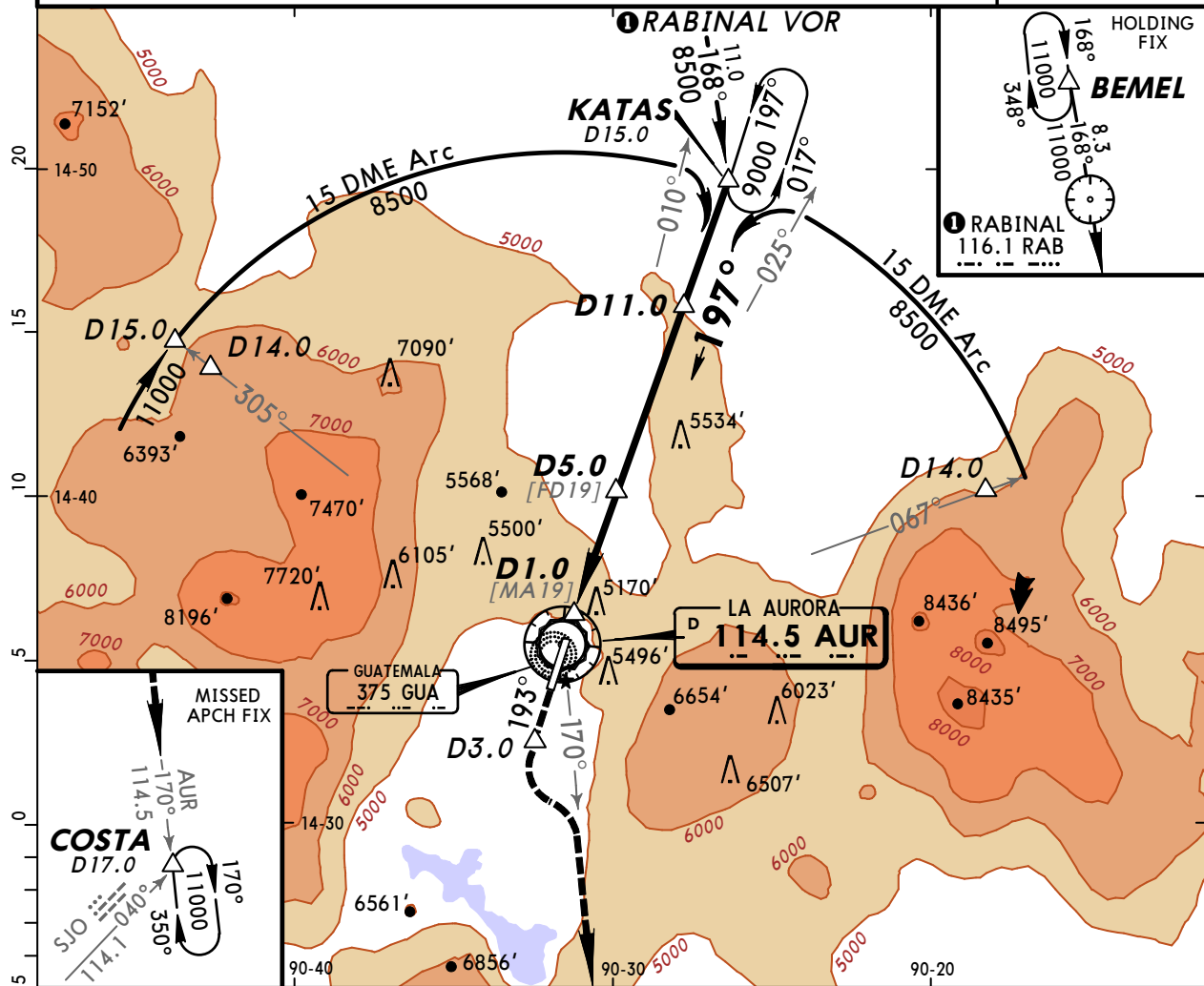
				SALS	013°	AUR	AUR	10000'
				REIL	↑	114.5	LT	↑
				PAPI			R-350	
MAP at D1.5								

STRAIGHT-IN LANDING RWY01			CEILING REQUIRED		CIRCLE-TO-LAND	
MDA(H) 5340' (456')			Not Authorized East of Rwy			
CEILING-VISIBILITY			ALS out	Max Kts	MDA(H)	CEIL-VIS
A				90	5460' (508')	600' - 1
B	500' - 1			120	5460' (508')	600' - 1
C				140	5460' (508')	600' - 1½
D	500' - 1½			165	5680' (728')	800' - 2¼

MGGT/GUA
 LA AURORA INTL

JEPPESENGUATEMALA CITY, GUATEMALA
 23 SEP 05 **(13-4)** **Eff 29 Sep**
VOR DME Rwy 19

ATIS 126.5		AURORA Approach (*R) 119.3		AURORA Tower 118.1		Ground 121.9	
VOR AUR 114.5	Final Apch Crs 197°	Minimum Alt D5.0 6300' (1342')	MDA(H) 5440' (482')	Apt Elev 4952' TDZE 4958'			
MISSED APCH: Climb on course of 193° until 3 NM SOUTH of AUR VOR, then turn LEFT to intercept AUR VOR R-170 outbound and continue climbing until reaching 11000' at COSTA INT/D17.0 and hold. Request instructions from APP.							
Alt Set: INCHES		Trans level: FL 200		Trans alt: 19500'		MSA AUR VOR	



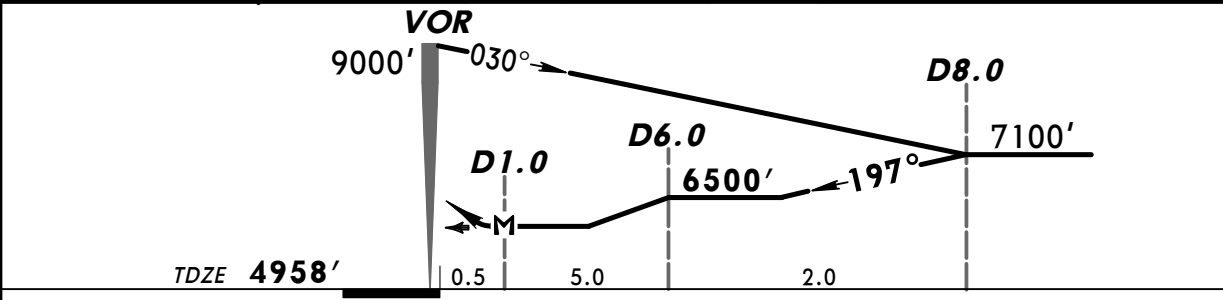
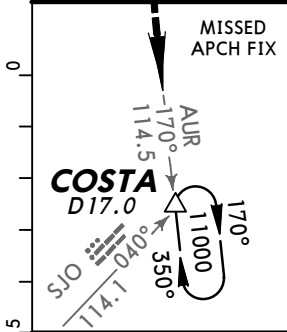
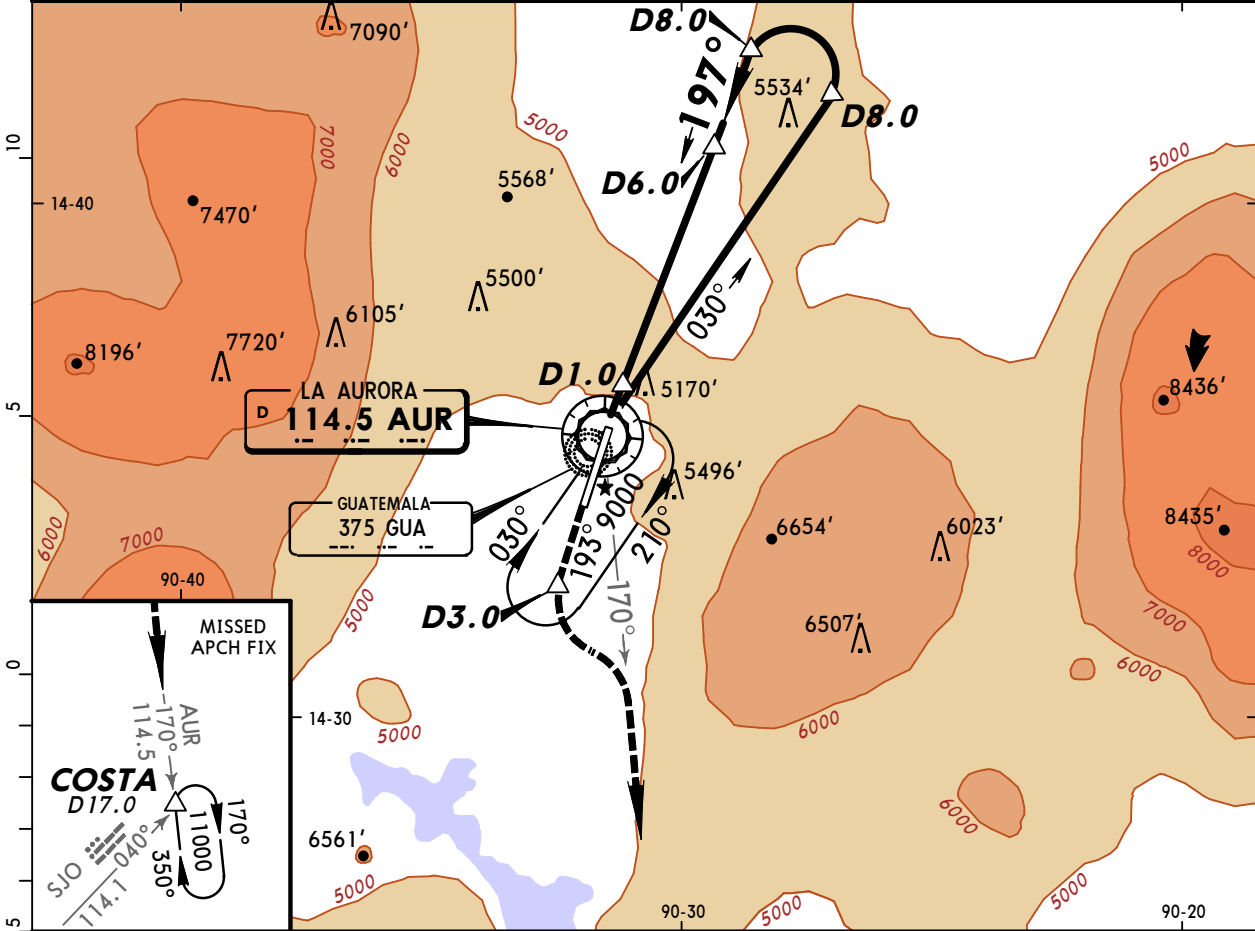
Gnd Speed-Kts	70	90	100	120	140	160	SALS REIL PAPI	↑ on 193° until 3.0 NM SOUTH AUR VOR
Descent angle [3.00°]	372	478	531	637	743	849		
MAP at D1.0								

STRAIGHT-IN LANDING RWY 19 CEILING REQUIRED		CIRCLE-TO-LAND	
MDA(H) 5440' (482')		Not Authorized East of Rwy	
CEILING-VISIBILITY ALS out		Max Kts	MDA(H) CEIL-VIS
A	500'-1	90	5520' (568') 600'-1
B	500'-1	120	5620' (668') 700'-1
C	500'-1 1/4	140	5620' (668') 700'-1 3/4
D	500'-1 1/2	165	5860' (908') 1000'-3

MGGT/GUA
LA AURORA INTL

JEPPESEN GUATEMALA CITY, GUATEMALA
 7 NOV 03 **(13-5)**
VOR Rwy 19

ATIS 126.5		AURORA Approach (*R) 119.3		AURORA Tower 118.1		Ground 121.9	
VOR AUR 114.5	Final Apch Crs 197°	Minimum Alt D6.0 6500' (1542')	MDA(H) 5860' (902')	Apt Elev 4952' TDZE 4958'			
MISSED APCH: Climb on course of 193° until 3 NM SOUTH of AUR VOR, then turn LEFT to intercept AUR VOR R-170 outbound and continue climbing until reaching 11000' at COSTA INT/D17.0 and hold. Request instructions from APP.							
Alt Set: INCHES		Trans level: FL 200		Trans alt: 19500'		MSA AUR VOR	



MAP at D1.0	REIL	SALS	↑ on 193° until 3.0 NM SOUTH AUR VOR
	PAPI		

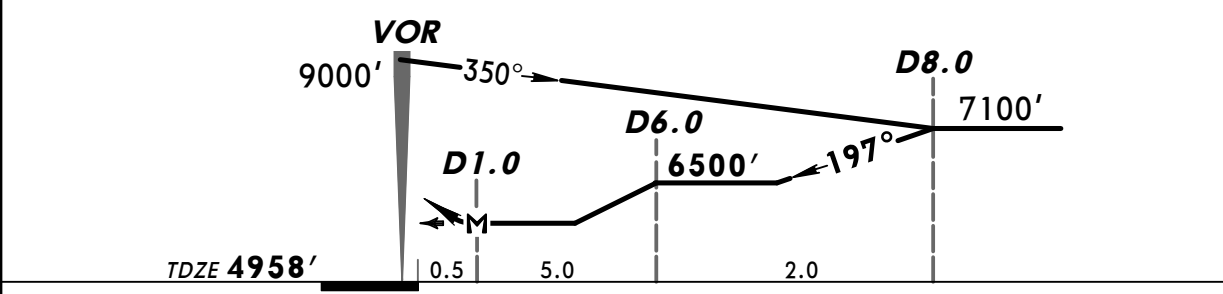
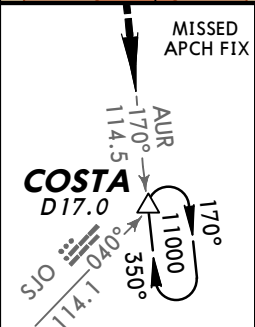
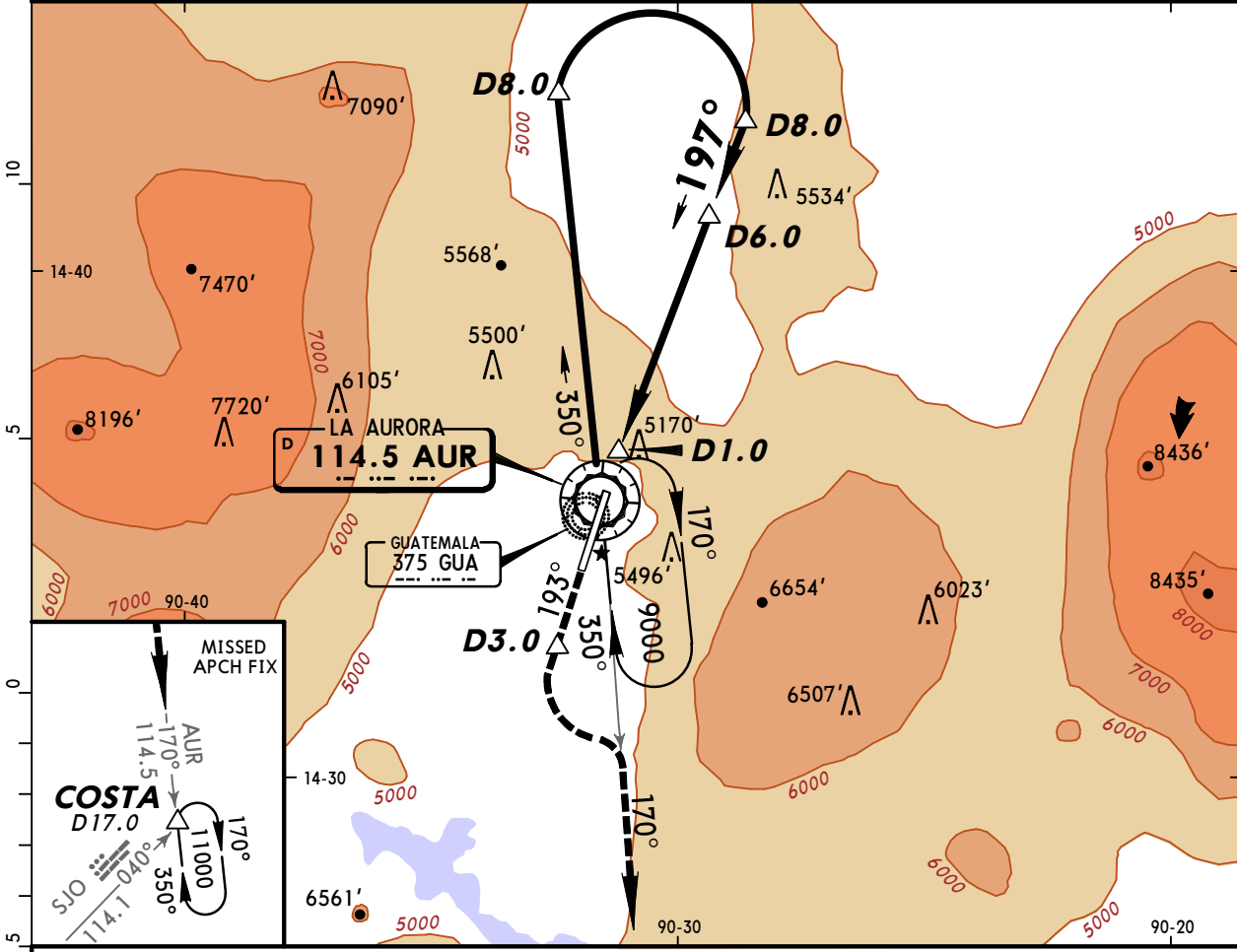
STRAIGHT-IN LANDING RWY 19		CEILING REQUIRED	CIRCLE-TO-LAND	
MDA(H) 5860' (902')			Not Authorized East of Rwy	
	ALS out	Max Kts.	MDA(H)	CEIL-VIS
A	CEILING-VISIBILITY	90	5860' (908')	1000' - 1¼
B	1000' - 1¼	120		
C	1000' - 2¾	140	5860' (908')	1000' - 2¾
D	1000' - 3	165		

MGGT/GUA
LA AURORA INTL

JEPPESENGUATEMALA CITY, GUATEMALA
VOR DME-3 Rwy 19

7 NOV 03 (13-6)

ATIS 126.5		AURORA Approach (*R) 119.3		AURORA Tower 118.1		Ground 121.9	
VOR AUR 114.5	Final Apch Crs 197°	Minimum Alt D6.0 6500' (1542')	MDA(H) 5440' (482')	Apt Elev 4952' TDZE 4958'			
MISSED APCH: Climb on course of 193° until 3 NM SOUTH of AUR VOR, then turn LEFT to intercept AUR VOR R-170 outbound and continue climbing until reaching 11000' at COSTA INT/D17.0 and hold. Request instructions from APP.							
Alt Set: INCHES		Trans level: FL 200		Trans alt: 19500'		MSA AUR VOR	



MAP at D1.0				REIL	SALS	↑ on 193° until SOUTH AUR VOR	3.0 NM
-------------	--	--	--	------	------	-------------------------------	---------------

STRAIGHT-IN LANDING RWY 19		CEILING REQUIRED		CIRCLE-TO-LAND	
MDA(H) 5440' (482')		Not Authorized East of Rwy			
CEILING-VISIBILITY		ALS out	Max Kts.	MDA(H)	CEIL-VIS
A	500' - 1		90	5860' (908')	1000' - 1¼
B			120		
C	500' - 1¼		140	5860' (908')	1000' - 2¾
D	500' - 1½		165	5860' (908')	1000' - 3