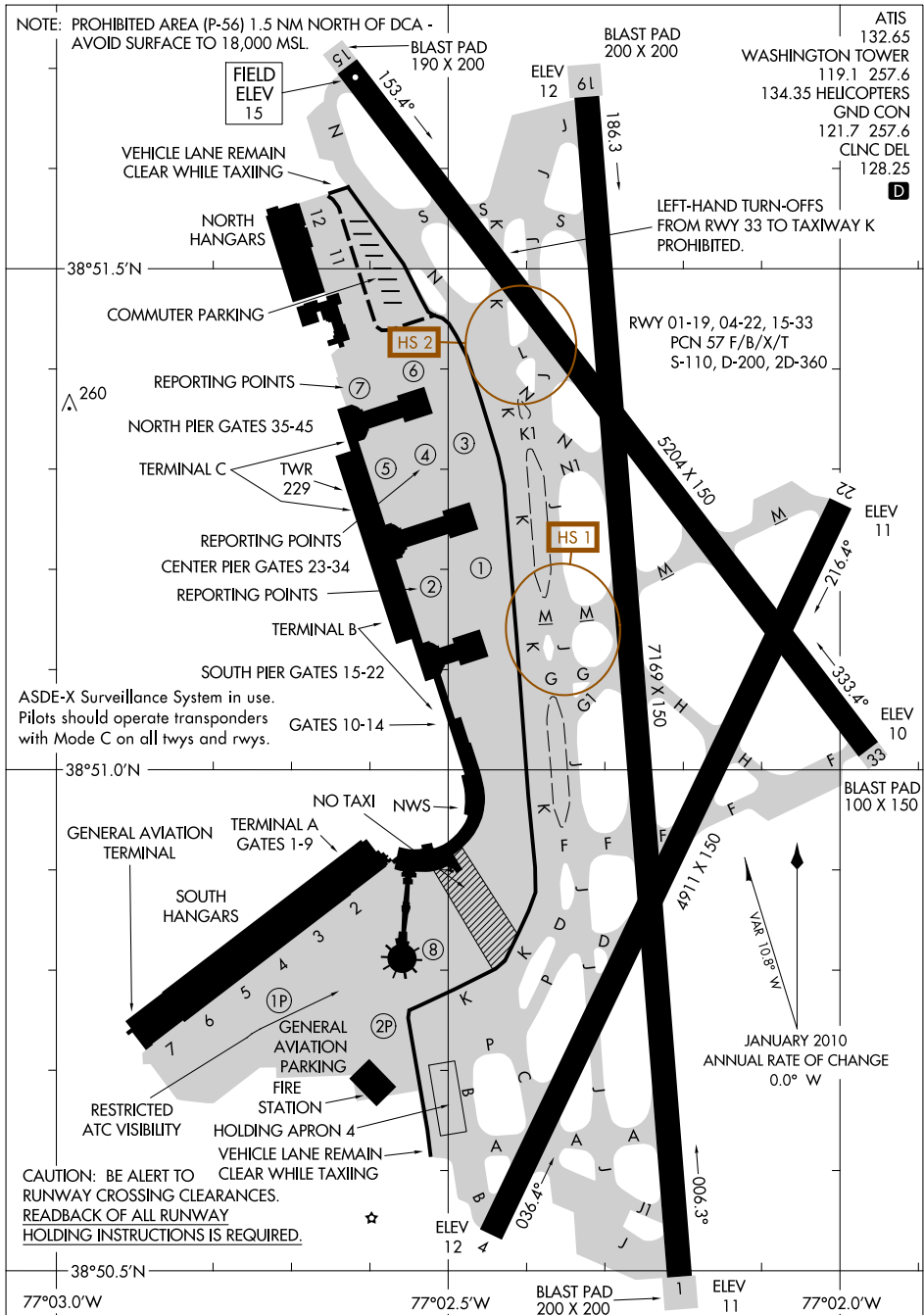


AIRPORT DIAGRAM

RONALD REAGAN WASHINGTON NATIONAL (DCA)
WASHINGTON / AL-443 (FAA) WASHINGTON, D.C.

NOTE: PROHIBITED AREA (P-56) 1.5 NM NORTH OF DCA -
AVOID SURFACE TO 18,000 MSL.



NE-3, 22 AUG 2013 to 19 SEP 2013

NE-3, 22 AUG 2013 to 19 SEP 2013

AIRPORT DIAGRAM

WASHINGTON / RONALD REAGAN WASHINGTON NATIONAL (DCA) WASHINGTON, D.C.



DEPARTURE ROUTE DESCRIPTION

TAKEOFF RWY 1: Climb heading 004° to intercept course 332° to ADAXE, thence

TAKEOFF RWY 33: Climb heading 332° to 515 MSL, then right turn direct ADAXE, thence

. . . . then on depicted route to LAZIR, then on heading 328°, expect radar vectors, maintain 5000, expect clearance to filed altitude ten (10) minutes after departure.

TAKEOFF OBSTACLE NOTES:

Rwy 1: Building 119' from DER, 330' right of centerline, 16' AGL/23' MSL.

Fence and trees beginning 261' from DER, 211' left of centerline, up to 62' AGL/72' MSL. Trees beginning 1365' from DER, 331' right of centerline, 47' AGL/51' MSL. Monument 1.7 NM from DER, 1784' left of centerline, 556' AGL/596' MSL.

Rwy 33: Trees beginning 140' from DER, left and right of centerline, up to 70' AGL/80' MSL. Blast fence beginning 174' from DER, left and right of centerline, up to 9' AGL/24' MSL. Poles beginning 1221' from DER, left and right of centerline, up to 73' AGL/106' MSL. Buildings beginning 1557' from DER, 623' left of centerline, up to 102' AGL/142' MSL. Elevator 1829' from DER, 345' right of centerline, 71' AGL/88' MSL. Flagpole 1.7 NM from DER, 2118' left of centerline, 108' AGL/308' MSL.

NE-3, 22 AUG 2013 to 19 SEP 2013

NE-3, 22 AUG 2013 to 19 SEP 2013

NATIONAL THREE DEPARTURE

SL-443 (FAA)

WASHINGTON, DC



DEPARTURE ROUTE DESCRIPTION

TAKEOFF RWY 1: Climbing left turn as soon as practical to intercept DCA VOR/DME R-328 to 5000 or as assigned, thence . . .

TAKEOFF RWY 4: Climbing right turn as soon as practical to intercept DCA VOR/DME R-070 to 2000 or as assigned, thence . . .

TAKEOFF RWY 15: Climbing right turn as soon as practical to intercept DCA VOR/DME R-185 to 5000 or as assigned, thence . . .

TAKEOFF RWY 19: Climb on DCA VOR/DME R-185 to 5000 or as assigned, thence . . .

TAKEOFF RWY 22: Climbing left turn as soon as practical to intercept DCA VOR/DME R-185 to 5000 or as assigned, thence . . .

TAKEOFF RWY 33: Climb on DCA VOR/DME R-328 to 5000 or as assigned, thence . . .

. . . expect radar vectors to filed/assigned fix. Expect clearance to filed altitude ten (10) minutes after departure.

TAKEOFF OBSTACLE NOTES:

Rwy 1: Building 119' from DER, 330' right of centerline, 16' AGL/23' MSL. Fence and trees beginning 261' from DER, 211' left of centerline, up to 62' AGL/72' MSL. Trees beginning 1365' from DER, 331' right of centerline, 47' AGL/51' MSL. Monument 1.7 NM from DER, 1784' left of centerline, 556' AGL/596' MSL.

Rwy 4: Monument 2.4 NM from DER, 656' right of centerline, 307' AGL/377' MSL.

Rwy 15: Tree 1.4 NM from DER, 1290' left of centerline, 74' AGL/223' MSL.

Rwy 22: Poles beginning 500' from DER, on centerline, up to 11' AGL/28' MSL. Trees beginning 1024' from DER, 557' right of centerline, up to 78' AGL/90' MSL. Transmission pole 4732' from DER, 888' right of centerline, 100' AGL/149' MSL. Building 4903' from DER, 651' right of centerline, 97' AGL/144' MSL. Tower 1.3 NM from DER, 1421' left of centerline, 170' AGL/223' MSL. Crane 1.7 NM from DER, 1912' right of centerline, 240' AGL/276' MSL. Building 1.9 NM from DER, 2566' right of centerline, 200' AGL/370' MSL.

Rwy 33: Trees beginning 140' from DER, left and right of centerline, up to 70' AGL/80' MSL. Blast fence beginning 174' from DER, left and right of centerline, up to 9' AGL/24' MSL. Poles beginning 1221' from DER, left and right of centerline, up to 73' AGL/106' MSL. Buildings beginning 1557' from DER, 623' left of centerline, up to 102' AGL/142' MSL. Elevator 1829' from DER, 345' right of centerline, 71' AGL/88' MSL. Flagpole 1.7 NM from DER, 2118' left of centerline, 108' AGL/308' MSL.

NE-3, 22 AUG 2013 to 19 SEP 2013

NE-3, 22 AUG 2013 to 19 SEP 2013

NATIONAL THREE DEPARTURE
(NATNL3.NATN1) 12264

RONALD REAGAN WASHINGTON NATIONAL (DCA)
WASHINGTON, DC

NATIONAL THREE DEPARTURE
(NATNL3.NATN1) 12264

RONALD REAGAN WASHINGTON NATIONAL (DCA)
WASHINGTON, DC

ATIS
132.65
CLNC DEL
128.25
GND CON
121.7 257.6
WASHINGTON TOWER
119.1 257.6

NOTE: Radar required.
NOTE: Pilots shall comply with Ronald Reagan Washington Natl Airport noise abatement and prohibited area (P-56) avoidance procedures as defined in Airport/Facility Directory Special Notices.
NOTE: ATC assigned only.

BUFFR
△ N39°27.56'
W77°35.90'
L-29-34, H-10-12

△ **JERES**
N39°38.57'
W77°27.30'
L-29-34, H-10-12

WESTMINSTER
117.9 EMI
Chan 126
N38°29.70'
W76°58.71'
L-29-34-36, H-10-12

SWANN
N39°09.09'
W76°13.73'
L-34-36,
H-10-12
△

RAMAY
N38°57.64'
W78°12.98'
L-29, H-10-12

DEPARTURE FREQUENCY
IF YOUR ROUTE CONTAINS...
J149, BUFFR, CSN
VORTAC, FLUKY, GINYA,
GVE VORTAC, HAFNR, LDN
VORTAC, MOL VOR/DME,
PAUKI, JERES or RAMAY
use 118.95 / 257.2

ARMEL
113.5 AML
Chan 82
N38°56.08'
W77°28.00'
L-29-34-36,
H-10-12

△ **WOOLY**
N39°20.32'
W77°02.19'
L-29-34-36

△ **PALEO**
N39°01.68'
W77°22.36'
L-29-34-36, H-10-12

**PROHIBITED AREA
P-56 1.5 NM NORTH
OF AIRPORT**

△ **GINYA**
N38°56.55'
W77°40.80'
H-10-12

LINDEN
114.3 LDN
Chan 90
N38°51.26'
W78°12.33'
L-29-34, H-10-12

CASANOVA
116.3 CSN
Chan 110
N38°38.47'
W77°51.93'
L-29-34-36, H-10-12

WASHINGTON
111.0 DCA
Chan 47
N38°51.57'
W77°02.19'
L-29-34-36, H-10-12

DEPARTURE FREQUENCY
IF YOUR ROUTE CONTAINS...
DAILY, PALEO, SWANN,
WOOLY or EMI VORTAC
use 125.65 / 348.725
NOTE: Chart not to scale.

MONTEBELLO
115.3 MOL
Chan 100
N37°54.03'
W79°06.41'
L-26,
H-10-12

△ **PAUKI**
N38°07.43'
W78°27.21'
L-26-36, H-10-12

△ **FLUKY**
N38°30.39'
W77°43.75'
L-29-34-36, H-10-12

HAFNR
N38°23.84'
W77°33.98'
△ L-29-34-36, H-10-12

△ **DAILY**
N38°33.63'
W76°43.52'
L-29-34-36, H-10-12

GORDONSVILLE
115.6 GVE
Chan 103
N38°00.82'
W78°09.18'
L-34-36, H-10-12

TAKEOFF MINIMUMS:

- Rwy 1: 600-2 with minimum climb of 270' per NM to 1400 or standard with minimum climb of 500' per NM to 800.
- Rwy 4: 400-3 or standard with minimum climb of 500' per NM to 420.
- Rwy 15: 300-1¼ or standard with minimum climb of 205' per NM to 300.
- Rwy 19: 300-1½ or standard with minimum climb of 205' per NM to 300.
- Rwy 22: 500-3 or standard with minimum climb of 280' per NM to 700.
- Rwy 33: Standard with minimum climb of 246' per NM to 1100.

(NARRATIVE ON FOLLOWING PAGE)

(NARRATIVE ON FOLLOWING PAGE)

LAZIR FOUR DEPARTURE (RNAV) WASHINGTON/ RONALD REAGAN WASHINGTON NATIONAL (DCA) (LAZIR4.LAZIR) 13010

ATIS 132.65
CLNC DEL 128.25
GND CON 121.7 257.6
WASHINGTON TOWER 119.1 257.6

DEPARTURE FREQUENCY
IF YOUR ROUTE CONTAINS...
J149, BUFFR, CSN
VORTAC, FLUKY, GINYA,
GVE VORTAC, HAFNR, LDN
VORTAC, MOL VOR/DME,
PAUKI, JERES or RAMAY
use 118.95 / 257.2

DEPARTURE FREQUENCY
IF YOUR ROUTE CONTAINS...
DAILY, PALEO, or SWANN
use 125.65 / 348.725



RAMAY ✧
LINDEN LDN ◻

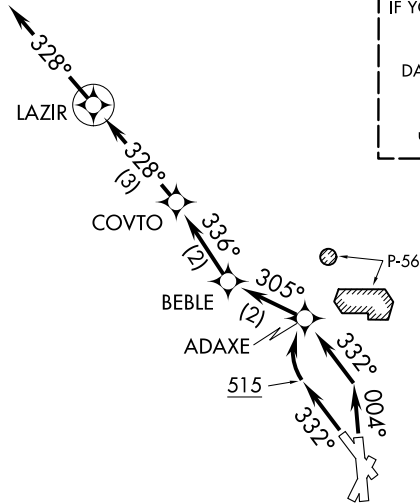
GINYA △
ARMEL AML ◻

CASANOVA CSN ◻

FLUKY △
HAFNR △

MONTEBELLO MOL ◻
PAUKI △

GORDONSVILLE GVE ◻



SWANN △
PALEO △

PROHIBITED AREA
P-56 1.5 NM NORTH
OF AIRPORT

DAILY △

- NOTE: DME/DME/IRU or GPS required.
- NOTE: Radar required.
- NOTE: RNAV 1.
- NOTE: Turbojet aircraft only.
- NOTE: Do not exceed 220K until crossing ADAXE.
- NOTE: ATC assigned only.

NOTE: Pilots shall comply with Ronald Reagan Washington Natl Airport noise abatement and prohibited area (P-56) avoidance procedures as defined in Airport/Facility Directory Special Notices.

NOTE: Departing Rwy 1 requires expeditious intercept of outbound course to ensure avoidance P-56 boundary.

TAKEOFF MINIMUMS:

Rwy 1: Standard with minimum climb of 825' per NM to 515' MSL.
Rwy 33: Standard with minimum climb of 540' per NM to 515' MSL.

NOTE: Chart not to scale.

WASHINGTON/ RONALD REAGAN WASHINGTON NATIONAL (DCA) WASHINGTON, DC (LAZIR4.LAZIR) 13010

HOT SPOTS

An "airport surface hot spot" is a location on an aerodrome movement area with a history or potential risk of collision or runway incursion, and where heightened attention by pilots/drivers is necessary.

A "hot spot" is a runway safety related problem area on an airport that presents increased risk during surface operations. Typically it is a complex or confusing taxiway/taxiway or taxiway/runway intersection. The area of increased risk has either a history of or potential for runway incursions or surface incidents, due to a variety of causes, such as but not limited to: airport layout, traffic flow, airport marking, signage and lighting, situational awareness, and training. Hot spots are depicted on airport diagrams as open circles or polygons designated as "HS 1", "HS 2", etc. and tabulated in the list below with a brief description of each hot spot. Hot spots will remain charted on airport diagrams until such time the increased risk has been reduced or eliminated.

CITY/AIRPORT	HOT SPOT	DESCRIPTION*
BALTIMORE, MD		
BALTIMORE/WASHINGTON INTL THURGOOD MARSHALL (BWI)	HS 1	Uncontrolled stop bar. No crossing allowed.
	HS 2	Rwy 10-28 in close proximity to Twy P1 int.
	HS 3	Twy E and Twy P intersect in close proximity to Rwy 10-28.
DOVER, DE		
DOVER AFB (DOV)	HS 1	Intersecting Twys and Rwys can create confusion. Query tower if lost or need help
	HS 2	Notice: Controlled Movement Area (CMA) boundary lines and stop lines are not always collocated with rwy hold lines.
	HS 3	Hold lines are further back from rwy than anticipated.
EASTON, MD		
EASTON/NEWNAM FIELD (ESN)	HS 1	Twy A and Twy B int in close proximity to the rwy.
FREDERICK, MD		
FREDERICK MUNI (FDK)	HS 1	Twy A and Twy B at Rwy 05-23.
	HS 2	Int of Twy A and Twy D.
	HS 3	Potential for inadvertent entry onto Rwy 30.
	HS 4	Potential for inadvertent entry onto Rwy 23.
LYNCHBURG, VA		
LYNCHBURG RGNL/ PRESTON GLENN FLD (LYH)	HS 1	Twy C at Twy B.
NEWPORT NEWS, VA		
NEWPORT NEWS/WILLIAMSBURG INTL (PHF)	HS1	Int of Rwy 07-25 and Rwy 02-20.
	HS2	Rwy 07 and Rwy 02 thlds in close proximity.
RICHMOND, VA		
RICHMOND INTL (RIC)	HS 1	Wrong rwy departure risk. Frequent rwy crossings due to aircraft exiting Rwy 34.
ROANOKE, VA		
ROANOKE RGNL/ WOODRUM FIELD (ROA)	HS 1	Twy A and Twy G at Rwy 24.
WASHINGTON, DC		
RONALD REAGAN WASHINGTON NATIONAL (DCA)	HS 1	Twy M and Twy J int in close proximity of the rwy.
	HS 2	Twy N, Twy K, Twy L, and Twy J complex int in close proximity of the rwy.

(SEE CONTINUATION PAGE FOR MORE LISTINGS)

HOT SPOTS

(CONTINUED)

CITY/AIRPORT	HOT SPOT	DESCRIPTION*
WILMINGTON, DE NEW CASTLE (ILG)	HS 1	Twy F, Rwy 09-27 and Rwy 14-32.

*See appropriate A/FD, Alaska or Pacific Supplement HOT SPOT table for additional information.

APP CRS	Rwy Idg	6869
184°	THRE	12
	Apt Elev	15

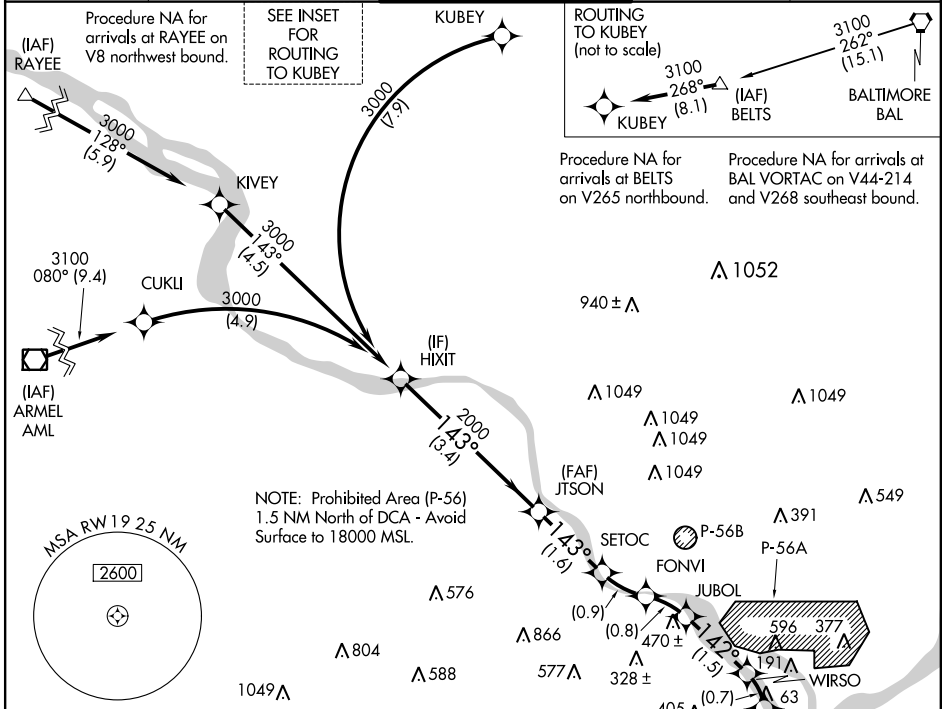
RNAV (RNP) RWY 19

WASHINGTON/ RONALD REAGAN WASHINGTON NATIONAL (DCA)

▼ For uncompensated Baro-VNAV systems, procedure NA below -10°C (14°F) or above 54°C (130°F). Inop table does not apply. RF and GPS required. When VGSI inop, procedure NA.

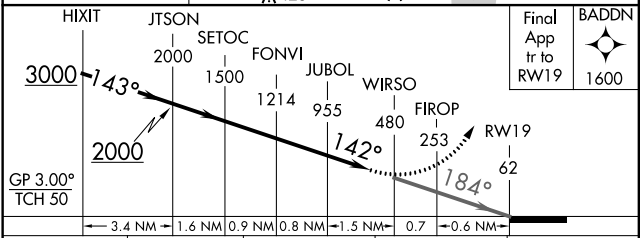
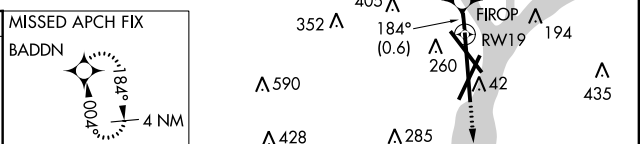
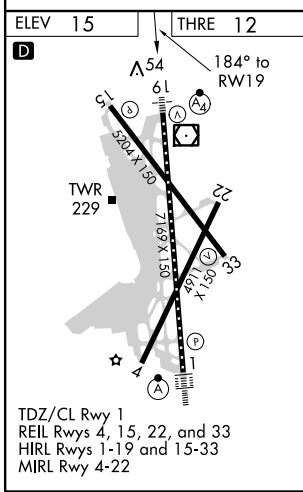
MALSF MISSED APPROACH: Climb on the final approach track to RW19 then direct BADDN to 1600 and hold.

ATIS	POTOMAC APP CON	WASHINGTON TOWER	GND CON	CLNC DEL
132.65	124.7 338.2	119.1 257.6	121.7 257.6	128.25



NE-3, 22 AUG 2013 to 19 SEP 2013

NE-3, 22 AUG 2013 to 19 SEP 2013



Final App Ir to RW19	BADDN															
1600																
<table border="1"> <tr> <td>CATEGORY</td> <td>A</td> <td>B</td> <td>C</td> <td>D</td> </tr> <tr> <td>RNP 0.11 DA</td> <td></td> <td>490-1½</td> <td>478 (500-1½)</td> <td></td> </tr> <tr> <td>RNP 0.30 DA</td> <td></td> <td>549-1¾</td> <td>537 (600-1¾)</td> <td></td> </tr> </table>		CATEGORY	A	B	C	D	RNP 0.11 DA		490-1½	478 (500-1½)		RNP 0.30 DA		549-1¾	537 (600-1¾)	
CATEGORY	A	B	C	D												
RNP 0.11 DA		490-1½	478 (500-1½)													
RNP 0.30 DA		549-1¾	537 (600-1¾)													

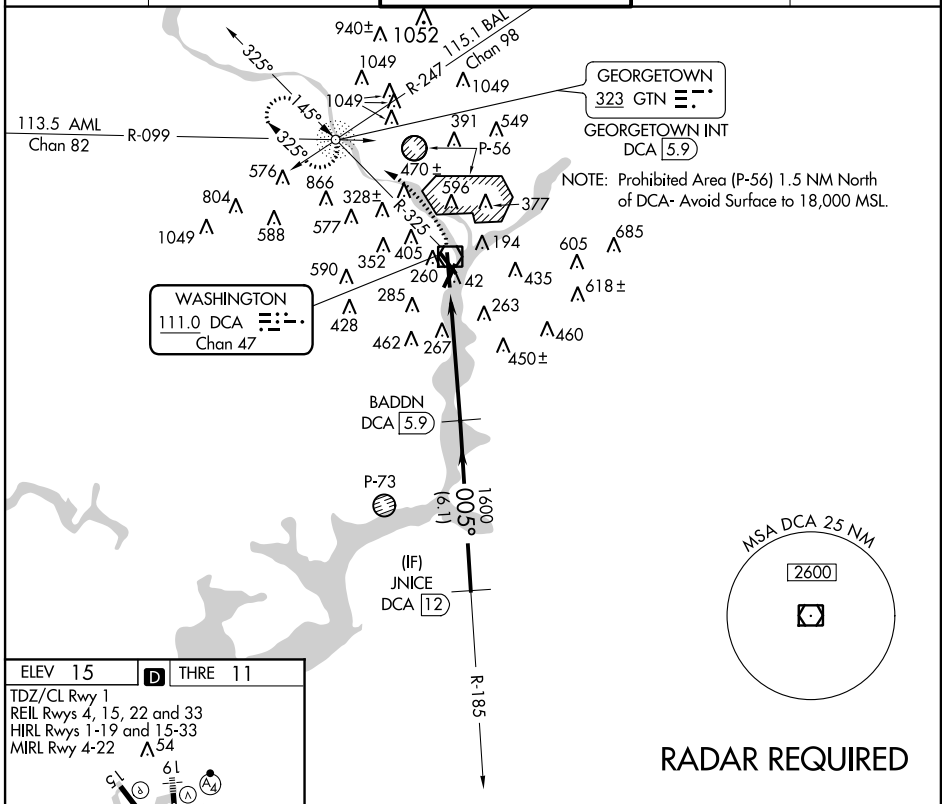
AUTHORIZATION REQUIRED

VOR/DME DCA 111.0 Chan 47	APP CRS 005°	Rwy Idg THRE 11 Apt Elev 15
--	------------------------	--

WASHINGTON/
RONALD REAGAN WASHINGTON NATIONAL (DCA) **VOR/DME RWY 1**

Circling to Rwy 4 NA at night. When VGSI inop, Circling Rwy 15 NA at night. For inoperative ALSF-2, increase S-1 Cats C and D visibility to 1 7/8 mile. Circling NA NE of Rwy 15-33.	ALSF-2	MISSED APPROACH: Climbing left turn to 2100 on DCA VOR/DME R-325 to GTN NDB/INT/DCA 5.9 DME and hold.
--	--------	---

ATIS 132.65	POTOMAC APP CON 124.7 338.2	WASHINGTON TOWER 119.1 257.6	GND CON 121.7 257.6	CLNC DEL 128.25
-----------------------	---------------------------------------	--	-------------------------------	---------------------------



NE-3, 22 AUG 2013 to 19 SEP 2013

NE-3, 22 AUG 2013 to 19 SEP 2013

ELEV 15	D	THRE 11			
TDZ/CL Rwy 1 REIL Rwys 4, 15, 22 and 33 HIRL Rwys 1-19 and 15-33 MIRL Rwy 4-22					
FAF to MAP 4.8 NM					
Knots	60	90	120	150	180
Min:Sec	4:48	3:12	2:24	1:55	1:36

2100	GTN	JNICE DCA 12		
DCA R-325	BADDN DCA 5.9	2500		
IHAHO DCA 1.1	DCA 3	1600		
CATEGORY	A	B	C	D
S-1	680/24	669 (700-1/2)	680-1 1/2	669 (700-1 1/2)
CIRCLING	720-1	705 (800-1)	720-2 705 (800-2)	760-2 1/2 745 (800-2 1/2)

VOR/DME RWY 1

LOC/DME I-DCA 109.9 Chan 36	APP CRS 006°	Rwy Idg 6869 THRE 11 Apt Elev 15
---	------------------------	---

ILS RWY 1 (SA CAT I)

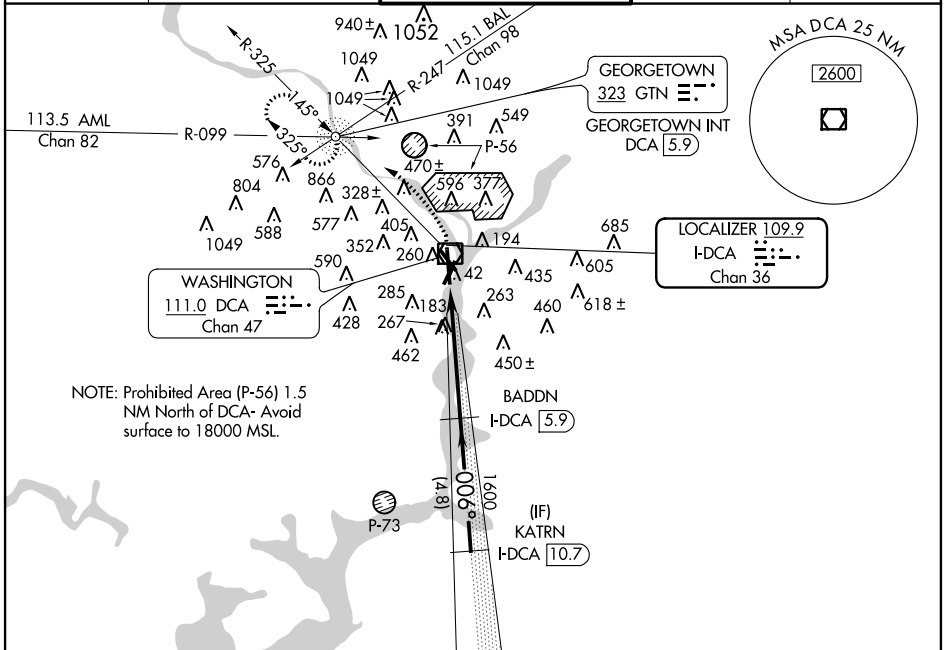
WASHINGTON/ RONALD REAGAN WASHINGTON NATIONAL (DCA)

Requires specific OPSPEC, MSPEC or LOA approval and use of HUD to DH.

ALSIF-2

MISSED APPROACH: Climb to 420 then climbing left turn to 2100 on DCA VOR/DME R-325 to GTN NDB/INT/DCA 5.9 DME and hold.

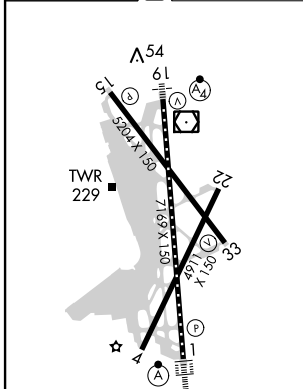
ATIS 132.65	POTOMAC APP CON 124.7 338.2	WASHINGTON TOWER 119.1 257.6	GND CON 121.7 257.6	CINC DEL 128.25
-----------------------	---------------------------------------	--	-------------------------------	---------------------------



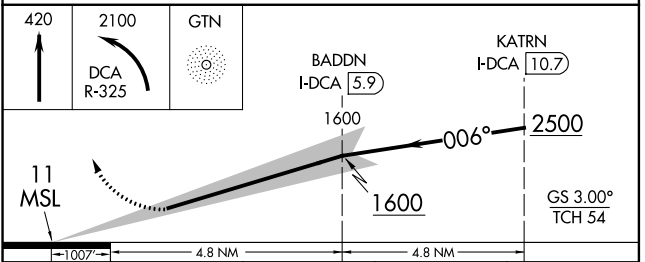
NE-3, 22 AUG 2013 to 19 SEP 2013

NE-3, 22 AUG 2013 to 19 SEP 2013

ELEV 15	D	THRE 11
---------	---	---------



RADAR REQUIRED



CATEGORY	A	B	C	D
S-ILS 1		RA 156/14	150 DA 161	

SA CATEGORY I ILS- SPECIAL AIRCREW & AIRCRAFT CERTIFICATION REQUIRED

TDZ/CL Rwy 1
REIL Rwy 4, 15, 22 and 33
HIRL Rwy 1-19 and 15-33
MIRL Rwy 4-22

VOR/DME DCA 111.0 Chan 47	APP CRS 155°	Rwy Idg 6869 TDZE 13 Apt Elev 15
---	------------------------	---

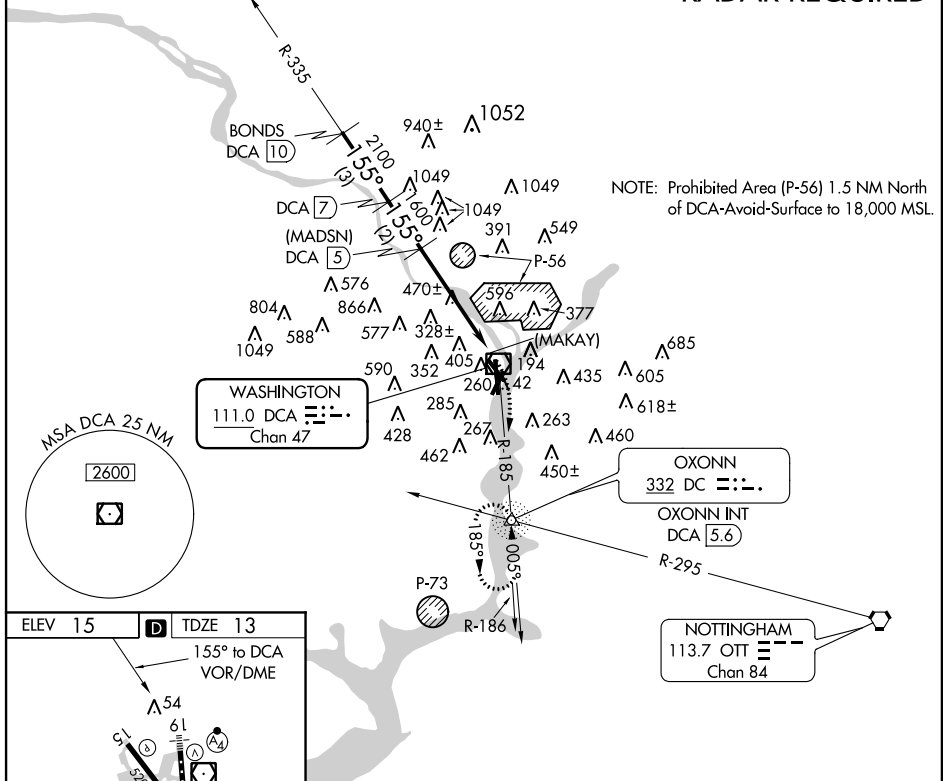
VOR/DME or GPS RWY 19

WASHINGTON/RONALD REAGAN WASHINGTON NATIONAL (DCA)

▼ Inoperative table does not apply.	⚠ Circling Cats C and D not authorized northeast Rwy 15-33.	MALSF 	MISSED APPROACH: Climbing right turn to 1800 via DCA R-185 to OXONNN INT/NDB/DCA 5.6 DME and hold.
--	--	------------------	---

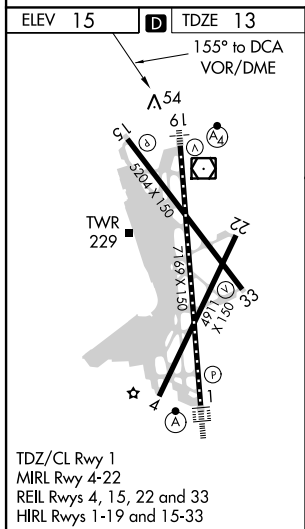
ATIS 132.65	POTOMAC APP CON 124.7 338.2	WASHINGTON TOWER 119.1 257.6	GND CON 121.7 257.6	CLNC DEL 128.25
-----------------------	---------------------------------------	--	-------------------------------	---------------------------

RADAR REQUIRED



NE-3, 22 AUG 2013 to 19 SEP 2013

NE-3, 22 AUG 2013 to 19 SEP 2013



	BONDS DCA (10)	DCA (7)	(MADSN) DCA (5)	1800 DCA R-185	DC
	3000	2100	1600	(MAKAY) DCA (0.5) VOR/DME	
	3 NM			2 NM	
	3 NM			4.5 NM	
	3 NM			0.4 NM	
CATEGORY	A	B	C	D	
S-19	980/60 967 (1000-1¼)	980-1½ 967 (1000-1½)	980-3	967 (1000-3)	
CIRCLING	980-1¼ 965 (1000-1¼)	980-1½ 965 (1000-1½)	980-3	965 (1000-3)	

LDA/DME RWY 19

WASHINGTON/ RONALD REAGAN WASHINGTON NATIONAL (DCA)

LOC/DME I-VVWH 108.5 Chan 22	APP CRS 145°	Rwy Idg 6869 TDZE 14 Apt Elev 16
---	------------------------	---

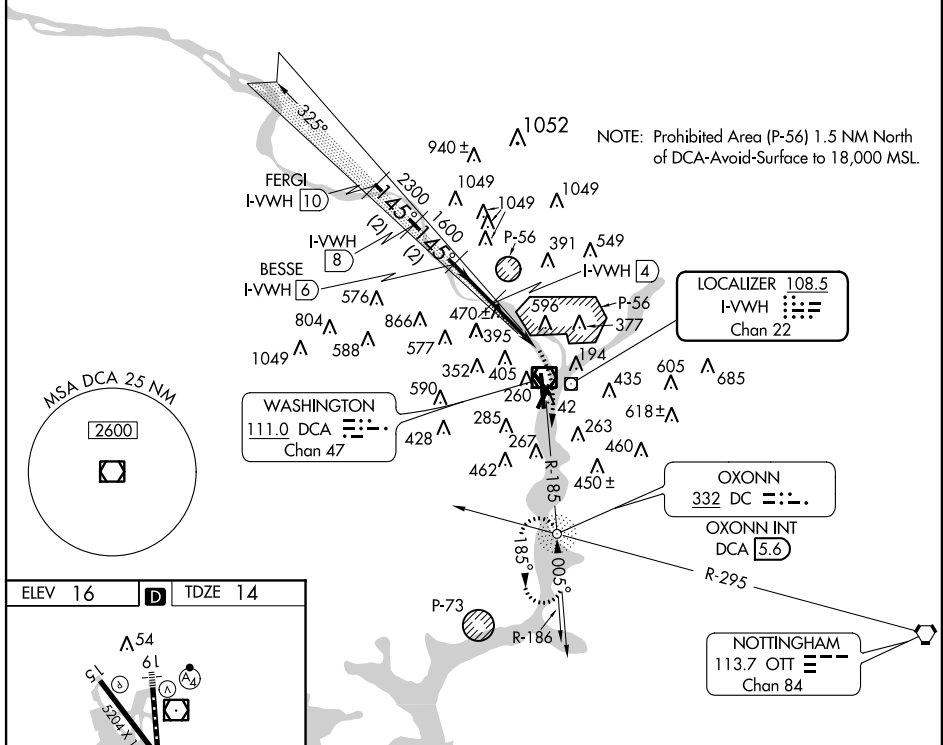
▼ Inoperative table does not apply.
▲ Circling Cats C and D not authorized northeast of Rwy 15-33.

MALSF

MISSED APPROACH: Climbing right turn to 1800 via DCA R-185 to OXONN NDB/Int/DCA 5.6 DME and hold.

ATIS 132.65	POTOMAC APP CON 124.7 338.2	WASHINGTON TOWER 119.1 257.6	GND CON 121.7 257.6	CLNC DEL 128.25
-----------------------	---------------------------------------	--	-------------------------------	---------------------------

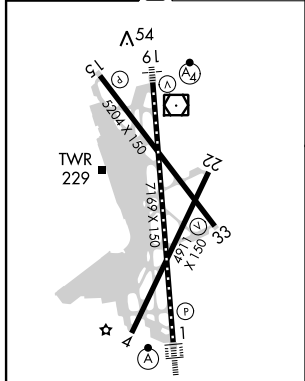
RADAR REQUIRED



NE-3, 22 AUG 2013 to 19 SEP 2013

NE-3, 22 AUG 2013 to 19 SEP 2013

ELEV 16	D	TDZE 14
---------	----------	---------



TDZ/CL Rwy 1
REIL Rwys 4, 15, 22 and 33
HIRL Rwys 1-19 and 15-33
MIRL Rwy 4-22

FERGI I-VVWH (10)	BESSE I-VVWH (6)	1800	DC
* 3000	145°	2300	DCA R-185
		1600	I-VVWH (1.6)
		1000	
* 2000 when directed by ATC.			
← 2 NM		← 2 NM	
← 2 NM		← 2.4 NM	
		← 0.6	

CATEGORY	A	B	C	D
S-LDA 19	720/60 706 (800-1¼)		720-2 706 (800-2)	720-2¼ 706 (800-2¼)
CIRCLING	720-1¼ 704 (800-1¼)		720-2 704 (800-2)	720-2¼ 704 (800-2¼)

LDA/DME RWY 19

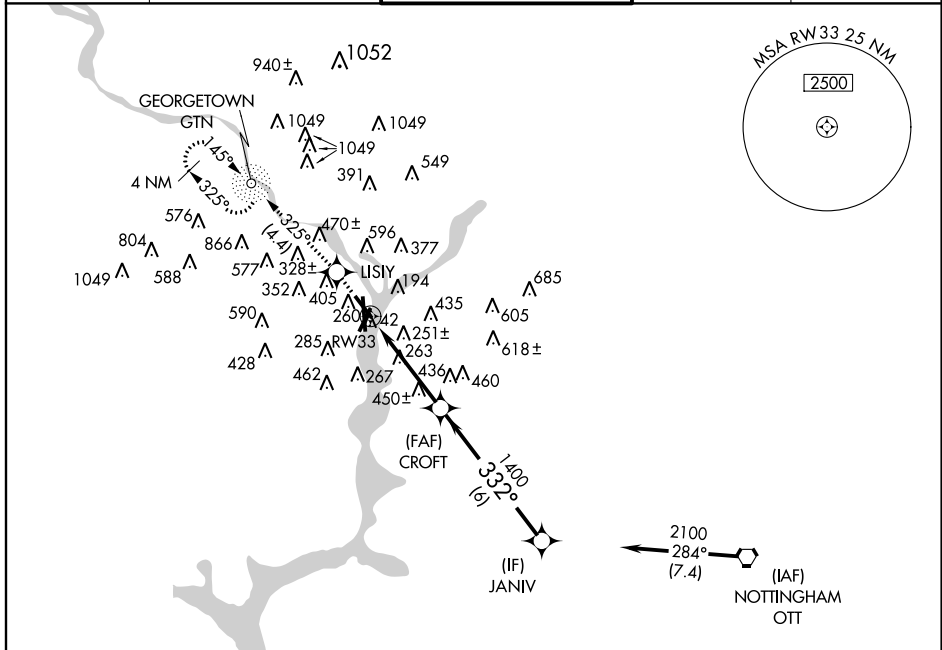
WAAS CH 90123 W33A	APP CRS 332°	Rwy Idg 5204 TDZE 13 Apt Elev 15
--	------------------------	---

WASHINGTON/
RONALD REAGAN WASHINGTON NATIONAL (DCA) **RNAV (GPS) RWY 33**

▼ Circling NA for Cats C and D northeast of Rwy 15-33. DME/DME RNP-0.3 NA. For uncompensated Baro-VNAV systems, LNAV/VNAV NA below -15°C (5°F) or above 48°C (118°F).

MISSED APPROACH: Climb to 2100 direct LISIY and via 325° track to GTN NDB and hold.

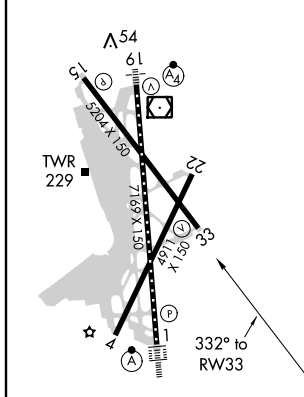
ATIS 132.65	POTOMAC APP CON 124.7 338.2	WASHINGTON TOWER 119.1 257.6	GND CON 121.7 257.6	CINC DEL 128.25
-----------------------	---------------------------------------	--	-------------------------------	---------------------------



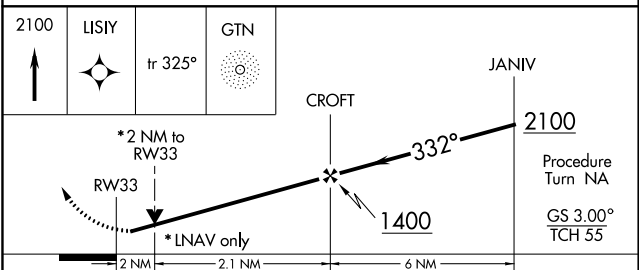
NE-3, 22 AUG 2013 to 19 SEP 2013

NE-3, 22 AUG 2013 to 19 SEP 2013

ELEV 15	D	TDZE 13
---------	----------	---------



TDZ/CL Rwy 1
REIL Rwy 4, 15, 22 and 33
HIRL Rwy 1-19 and 15-33
MIRL Rwy 4-22



CATEGORY	A	B	C	D
LPV DA		269-3/4	256 (300-3/4)	
LNAV/VNAV DA		760-2 3/4	747 (800-2 3/4)	
LNAV MDA	700-1	687 (700-1)	700-2 687 (700-2)	700-2 1/4 687 (700-2 1/4)
CIRCLING	760-1	745 (800-1)	760-2 1/4 745 (800-2 1/4)	760-2 1/2 745 (800-2 1/2)

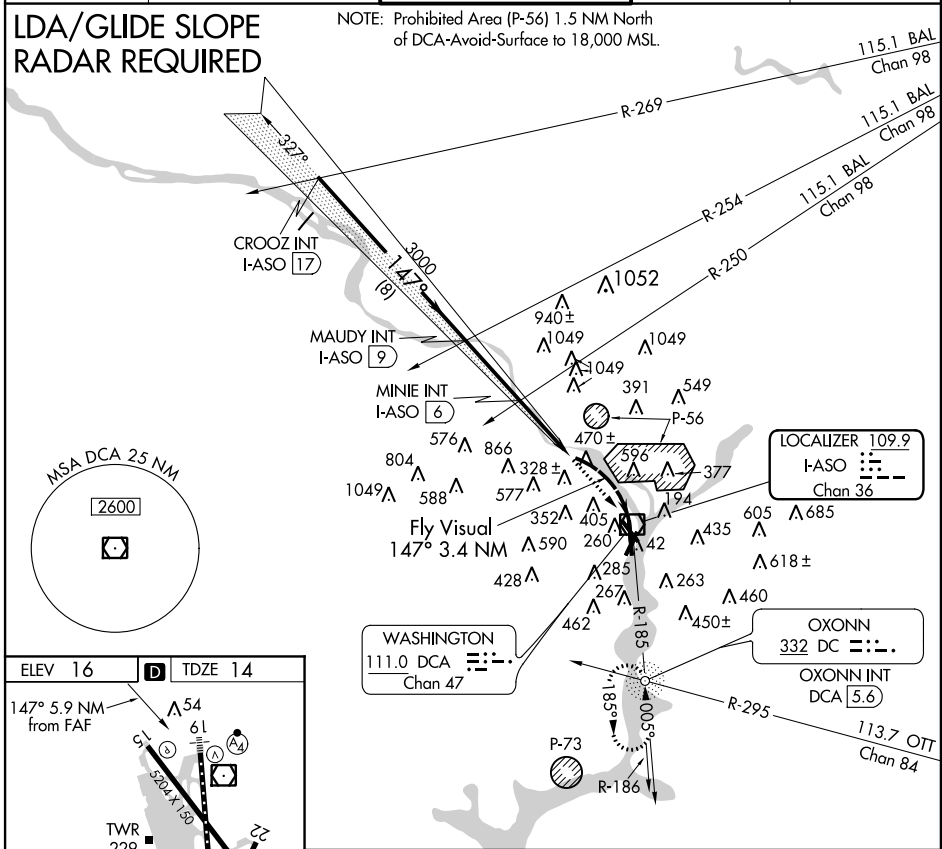
ROSSLYN LDA RWY 19

WASHINGTON/RONALD REAGAN WASHINGTON NATIONAL (DCA)

LOC/DME I-ASO 109.9 Chan 36	APP CRS 147°	Rwy Idg 6869 TDZE 14 Apt Elev 16
---	------------------------	---

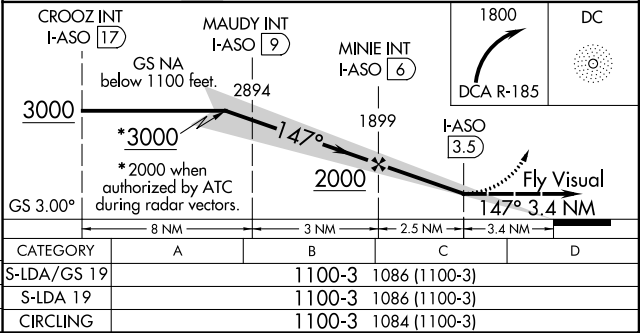
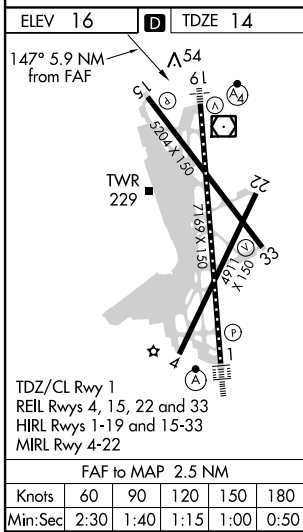
<p>▼ Glide slope provided by standard glide slope equipment. ▲ Inoperative table does not apply.</p> <p>▲ Circling Cats C and D not authorized northeast Rwy 15-33.</p>	<p>MALSF</p>	<p>MISSED APPROACH: Climb to 1800 direct DCA VOR/DME and R-185 to OXONN NDB/Int/DCA 5.6 DME and hold.</p>
---	--------------	---

ATIS 132.65	POTOMAC APP CON 124.7 338.2	WASHINGTON TOWER 119.1 257.6	GND CON 121.7 257.6	CLNC DEL 128.25
-----------------------	---------------------------------------	--	-------------------------------	---------------------------



NE-3, 22 AUG 2013 to 19 SEP 2013

NE-3, 22 AUG 2013 to 19 SEP 2013



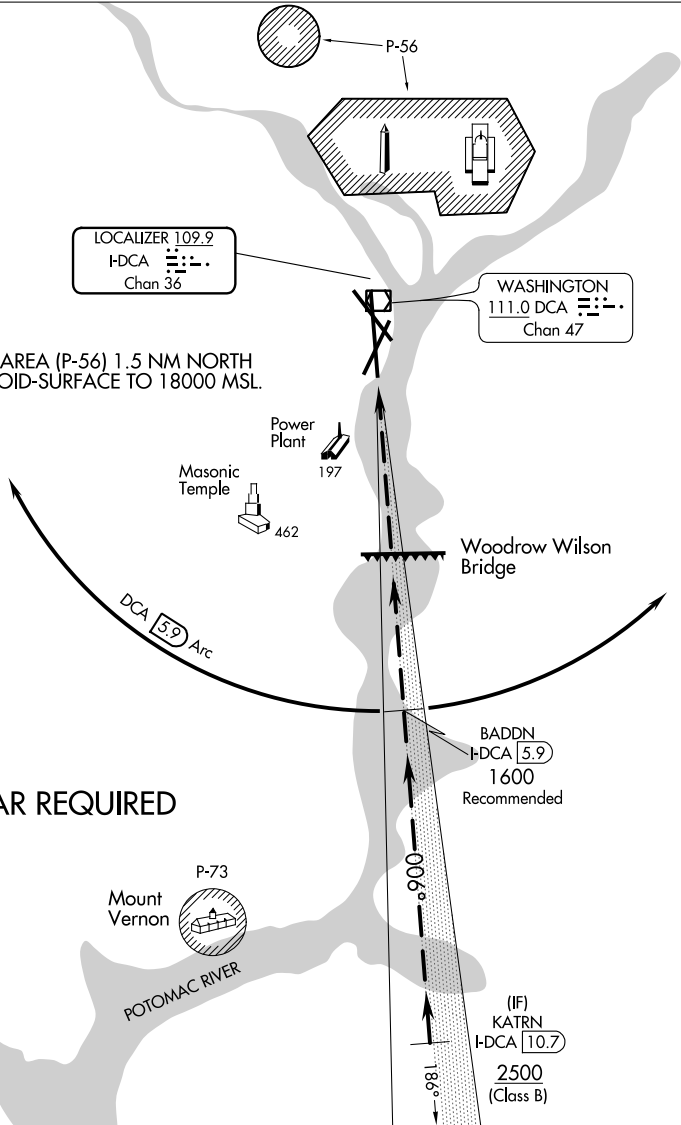
MOUNT VERNON VISUAL RUNWAY 1

ATIS 132.65
 POTOMAC APP CON
 124.7 338.2
 WASHINGTON TOWER
 119.1 257.6
 GND CON
 121.7 257.6
 CLNC DEL
 128.25

LOCALIZER 109.9
 I-DCA [Morse code] Chan 36

WASHINGTON
 111.0 DCA [Morse code] Chan 47

NOTE: PROHIBITED AREA (P-56) 1.5 NM NORTH OF DCA-AVOID-SURFACE TO 18000 MSL.



RADAR REQUIRED

Vertical Guidance
 Navaid and Angle:
 I-DCA 3.00°

Weather Minimums: 3000
 feet ceiling and 4 mile
 visibility.

1 NM	2	3	4	5	6	7	8	9	10	11	12	13
------	---	---	---	---	---	---	---	---	----	----	----	----

Aircraft may proceed via DCA VOR/DME R-185 (inbound 005°), or via the ILS or LOC/DME RWY 1 approach to 5.9 DME, then follow the Potomac River to the airport.

MOUNT VERNON VISUAL RUNWAY 1

NE-3, 22 AUG 2013 to 19 SEP 2013

NE-3, 22 AUG 2013 to 19 SEP 2013

LOC/DME I-DCA	APP CRS	Rwy Idg	6869
109.9	006°	THRE	11
Chan 36		Apt Elev	15

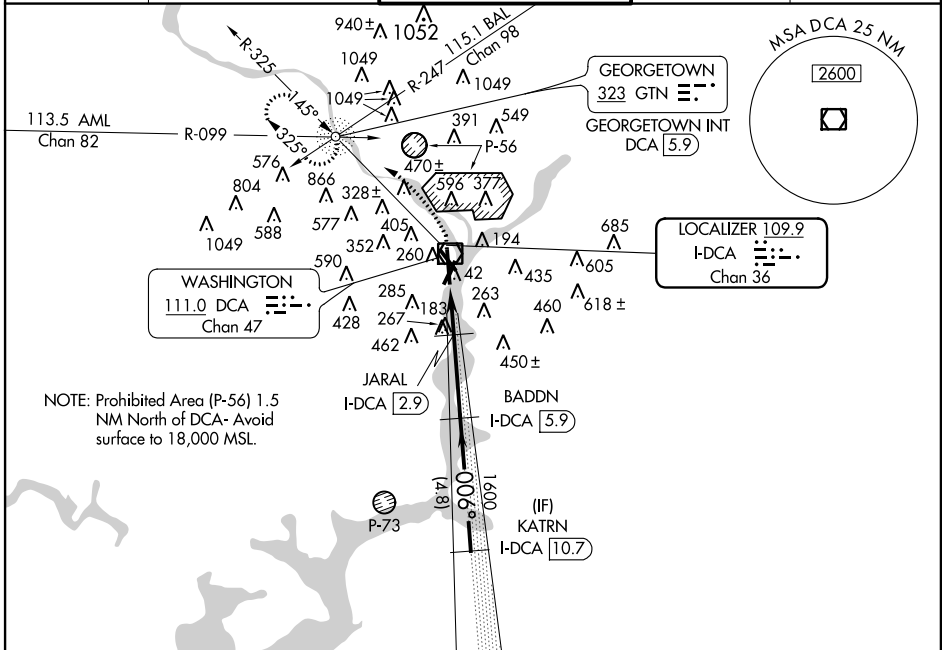
ILS or LOC/DME RWY 1

WASHINGTON/RONALD REAGAN WASHINGTON NATIONAL (DCA)

⚠ Circling to Rwy 4 NA at night. When VGSI inop, Circling Rwy 15 NA at night. Circling NA NE of Rwy 15-33. For inoperative ALSF-2, increase S-LOC 1 Cats C and D visibility to 1 3/8 mile.

ALSF-2 MISSED APPROACH: Climb to 420 then climbing left turn to 2100 on DCA VOR/DME R-325 to GTN NDB/Int/DCA 5.9 DME and hold.

ATIS	POTOMAC APP CON	WASHINGTON TOWER	GND CON	CLNC DEL
132.65	124.7 338.2	119.1 257.6	121.7 257.6	128.25

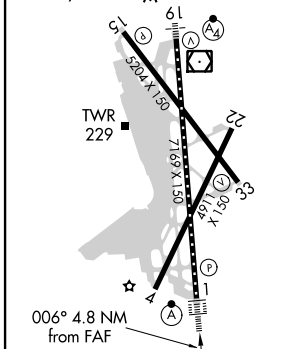


NE-3, 22 AUG 2013 to 19 SEP 2013

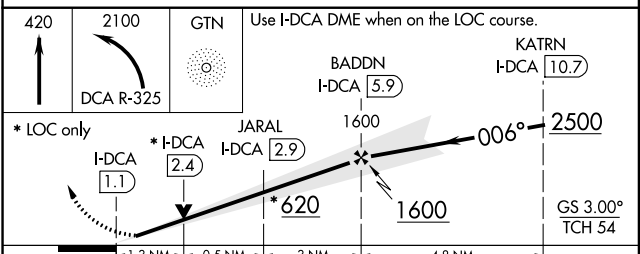
NE-3, 22 AUG 2013 to 19 SEP 2013

ELEV 15	D	THRE 11
---------	----------	---------

TDZ/CL Rwy 1
 REIL Rwys 4, 15, 22 and 33
 HIRL Rwys 1-19 and 15-33
 MIRL Rwy 4-22 Δ 54



RADAR REQUIRED



CATEGORY	A	B	C	D
S-ILS 1	211/18 200 (200-1/2)			
S-LOC 1	480/24	469 (500-1/2)	480/50	469 (500-1)
CIRCLING	720-1	705 (800-1)	720-2 705 (800-2)	760-2 1/2 745 (800-2 1/2)

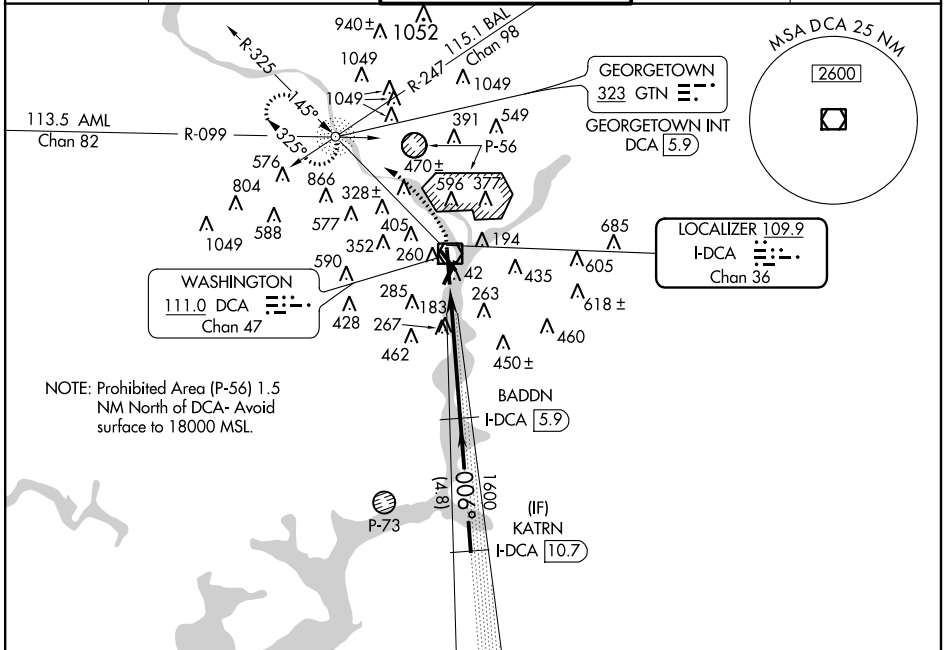
ILS or LOC/DME RWY 1

LOC/DME I-DCA 109.9 Chan 36	APP CRS 006°	Rwy Idg 6869 THRE 11 Apt Elev 15
--	------------------------	---

WASHINGTON/RONALD REAGAN WASHINGTON NATIONAL (DCA)
ILS RWY 1 (CAT II)

	ALSIF-2	MISSED APPROACH: Climb to 420 then climbing left turn to 2100 on DCA VOR/DME R-325 to GTN NDB/INT/DCA 5.9 DME and hold.

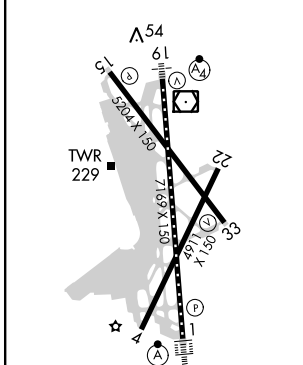
ATIS 132.65	POTOMAC APP CON 124.7 338.2	WASHINGTON TOWER 119.1 257.6	GND CON 121.7 257.6	CLNC DEL 128.25
-----------------------	---------------------------------------	--	-------------------------------	---------------------------



NE-3, 22 AUG 2013 to 19 SEP 2013

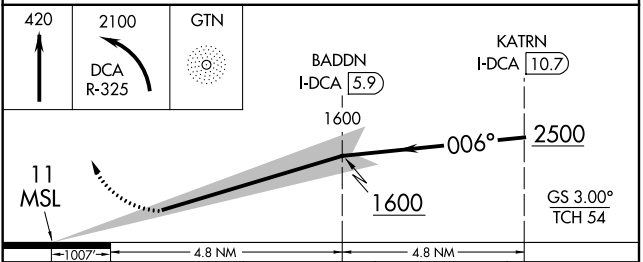
NE-3, 22 AUG 2013 to 19 SEP 2013

ELEV 15	D	THRE 11
---------	----------	---------



TDZ/CL Rwy 1
 REIL Rwy 4, 15, 22 and 33
 HIRL Rwy 1-19 and 15-33
 MIRL Rwy 4-22

420	2100	GTN	RADAR REQUIRED	
	DCA R-325		BADDN I-DCA 5.9	KATRIN I-DCA 10.7



CATEGORY	A	B	C	D
S-ILS 1		RA 106/12	100 DA 111	

CATEGORY II ILS- SPECIAL AIRCREW & AIRCRAFT CERTIFICATION REQUIRED

VOR/DME or GPS RWY 15

VOR/DME DCA 111.0 Chan 47	APP CRS 144°	Rwy Idg 5204 TDZE 16 Apt Elev 16
---	------------------------	---

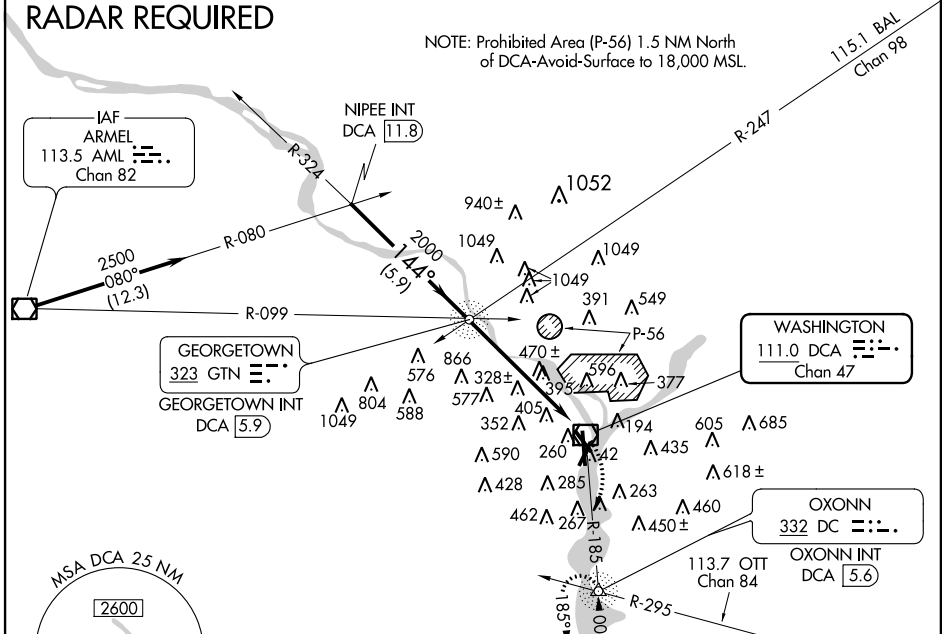
WASHINGTON/RONALD REAGAN WASHINGTON NATIONAL (DCA)

	Circling Cat C and D not authorized northeast of Rwy 15-33.		MISSED APPROACH: Climbing right turn to 1800 via DCA R-185 to OXONN NDB/Int/DCA 5.6 DME and hold.
--	---	--	---

ATIS 132.65	POTOMAC APP CON 124.7 338.2	WASHINGTON TOWER 119.1 257.6	GND CON 121.7 257.6	CLNC DEL 128.25
-----------------------	---------------------------------------	--	-------------------------------	---------------------------

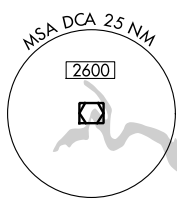
RADAR REQUIRED

NOTE: Prohibited Area (P-56) 1.5 NM North of DCA-Avoid-Surface to 18,000 MSL.

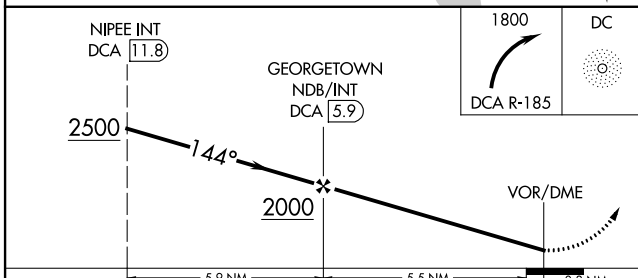
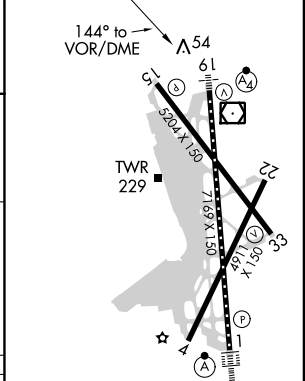


NE-3, 22 AUG 2013 to 19 SEP 2013

NE-3, 22 AUG 2013 to 19 SEP 2013



ELEV 16		TDZE 16
---------	--	---------



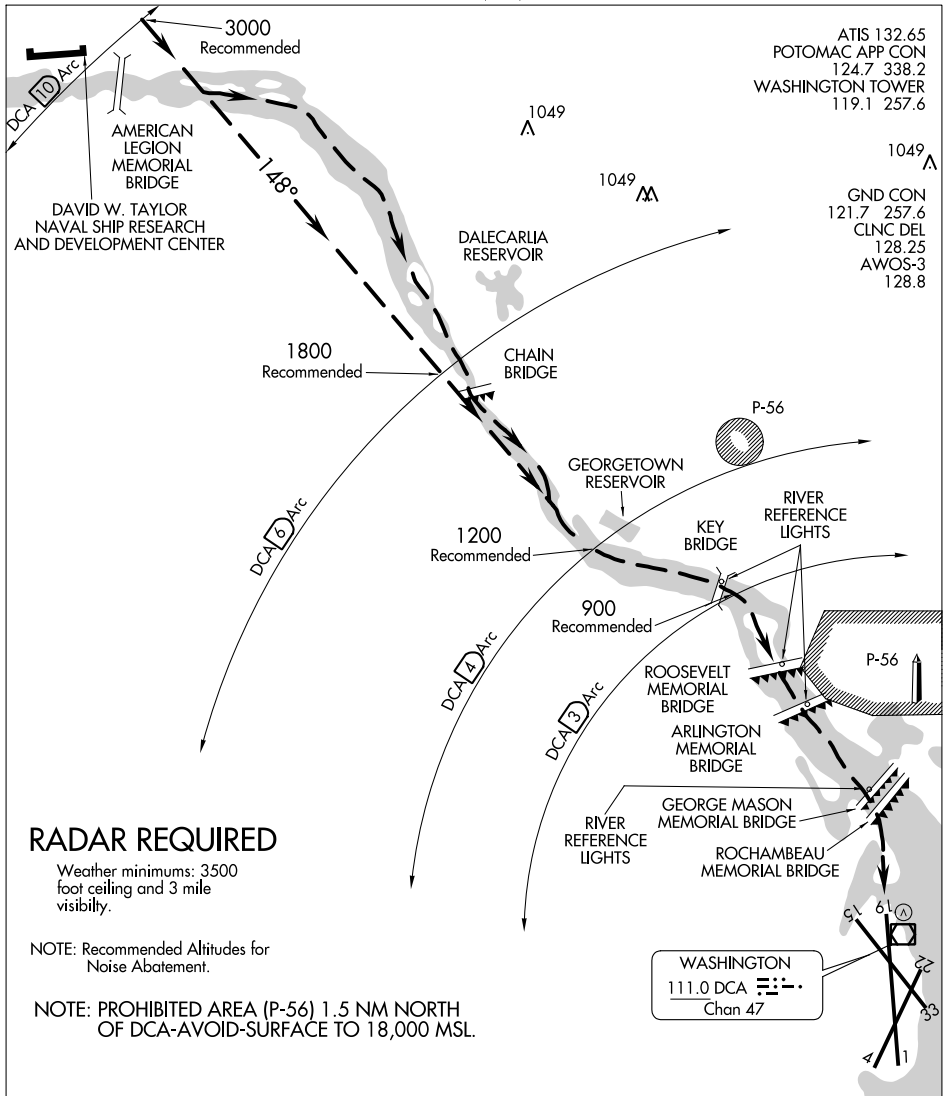
CATEGORY	A	B	C	D
S-15	920-1½ 904 (1000-1½)		920-2¾ 904 (1000-2¾)	920-3 904 (1000-3)
CIRCLING	920-1½ 904 (1000-1½)		920-2¾ 904 (1000-2¾)	920-3 904 (1000-3)

TDZ/CL Rwy 1
REIL Rwys 4, 15, 22 and 33
HIRL Rwys 1-19 and 15-33
MIRL Rwy 4-22

VOR/DME or GPS RWY 15

RIVER VISUAL RWY 19

WASHINGTON/ RONALD REAGAN WASHINGTON NATIONAL (DCA)
AL-443 (FAA) WASHINGTON, DC



ATIS 132.65
 POTOMAC APP CON 124.7 338.2
 WASHINGTON TOWER 119.1 257.6

GND CON 121.7 257.6
 CLNC DEL 128.25
 AWOS-3 128.8

RADAR REQUIRED

Weather minimums: 3500 foot ceiling and 3 mile visibility.

NOTE: Recommended Altitudes for Noise Abatement.

NOTE: PROHIBITED AREA (P-56) 1.5 NM NORTH OF DCA-AVOID-SURFACE TO 18,000 MSL.

1 NM	2	3	4	5	6	7
------	---	---	---	---	---	---

RIVER VISUAL RWY 19

Aircraft may visually follow the river to the airport, or may proceed via the DCA VOR/DME R-328 (148° inbound) or via the Rosslyn LDA Rwy 19 Approach to abeam Georgetown Reservoir or the DCA 4 NM DME fix, then follow the river to the airport.

NOTE: Clearance for visual approach does not authorize penetration of P-56.

RIVER VISUAL RWY 19

NE-3, 22 AUG 2013 to 19 SEP 2013

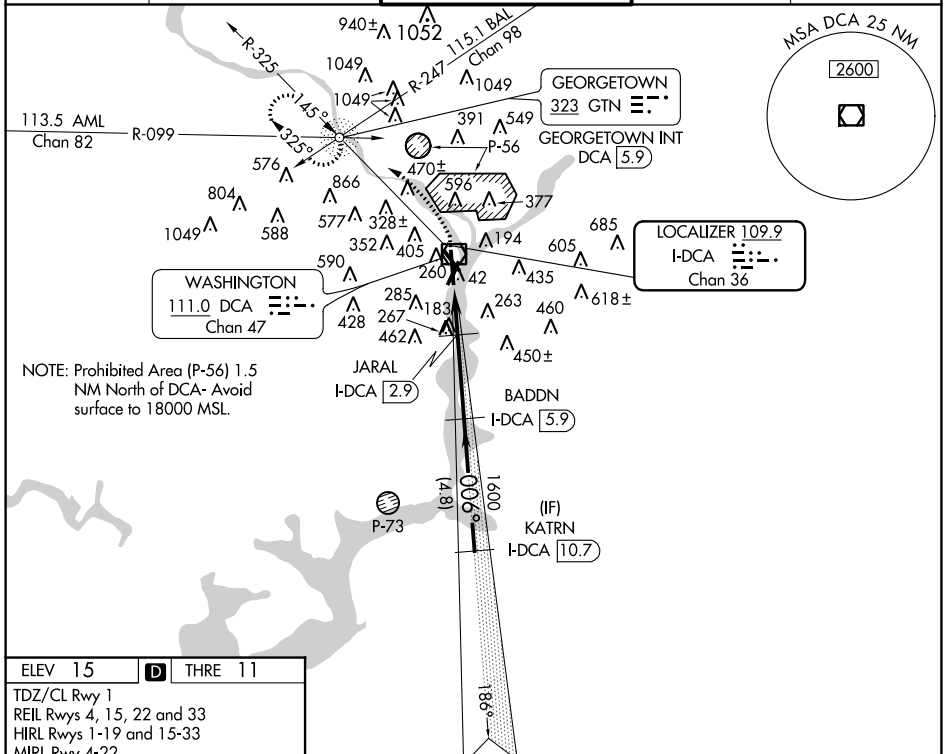
NE-3, 22 AUG 2013 to 19 SEP 2013

LOC/DME I-DCA	APP CRS	Rwy Idg	6869
109.9	006°	THRE	11
Chan 36		Apt Elev	15

COPTER ILS or LOC/DME RWY 1

WASHINGTON/ RONALD REAGAN WASHINGTON NATIONAL (DCA)

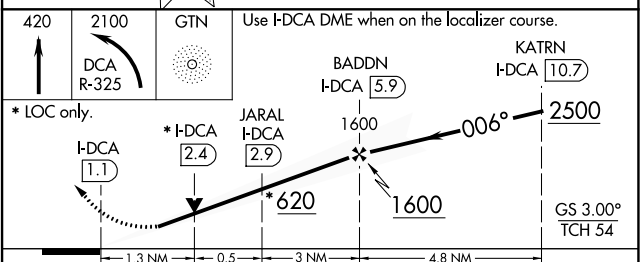
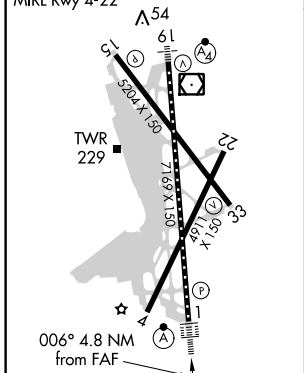
NA	ALS-F-2	MISSED APPROACH: Climb to 420 then climbing left turn to 2100 on DCA VOR/DME R-325 to GTN NDB/Int/DCA 5.9 DME and hold.	GND CON		CLNC DEL
			119.1 257.6	121.7 257.6	128.25
ATIS	POTOMAC APP CON	WASHINGTON TOWER	GND CON		CLNC DEL
132.65	124.7 338.2	119.1 257.6	121.7 257.6		128.25



NE-3, 22 AUG 2013 to 19 SEP 2013

NE-3, 22 AUG 2013 to 19 SEP 2013

ELEV 15	D	THRE 11
TDZ/CL Rwy 1 REIL Rws 4, 15, 22 and 33 HIRL Rws 1-19 and 15-33 MIRL Rwy 4-22		



CATEGORY	COPTER	
H-ILS 1	111/12	100 (100-1/8)
H-LOC 1	480/24	469 (500-1/2)
H-ILS 1	CAT II RA 106	

COPTER ILS CATEGORY II - SPECIAL AIRCREW & AIRCRAFT CERTIFICATION REQUIRED

FAF to MAP 4.8 NM					
Knots	45	60	75	90	105
Min:Sec	6:24	4:48	3:50	3:12	2:45



INSTRUMENT APPROACH PROCEDURE CHARTS



IFR ALTERNATE AIRPORT MINIMUMS

Standard alternate minimums for non-precision approaches are 800-2 (NDB, VOR, LOC, TACAN, LDA, VORTAC, VOR/DME, ASR or WAAS LNAV); for precision approaches 600-2 (ILS or PAR). Airports within this geographical area that require alternate minimums other than standard or alternate minimums with restrictions are listed below. NA - means alternate minimums are not authorized due to unmonitored facility or absence of weather reporting service. Civil pilots see FAR 91. IFR Alternate Airport Minimums: Ceiling and Visibility Minimums not applicable to USA/USN/USAF. Pilots must review the IFR Alternate Airport Minimums Notes for alternate airfield suitability.

NAME ALTERNATE MINIMUMS

ABINGDON, VA

VIRGINIA HIGHLANDS (VJI) LOC Rwy 24²
RNAV (GPS) Rwy 6¹
RNAV (GPS) Rwy 24¹
VOR/DME-B¹

NA when local weather not available.

¹Category C, 800-2½, Category D, 800-2½.

²Categories A, B, 900-2, Category C, 900-2½, Category D, 900-2½.

ANNAPOLIS, MD

LEE (ANP).....RNAV (GPS)-A
NA when local weather not available.

BALTIMORE, MD

BALTIMORE-WASHINGTON INTL THURGOOD
MARSHALL (BWI)..... ILS or LOC Rwy 28¹
VOR Rwy 10²

¹ILS, Categories A, B, C, 700-2; Category D 700-2½; LOC, Category D, 800-2½.

²Categories A, B, 1200-2; Category C, D 1200-3.

MARTIN STATE (MTN)..... LDA Rwy 33¹²
LOC Rwy 15¹²³
RNAV (GPS) Rwy 15²
RNAV (GPS) Rwy 33²
VOR/DME or TACAN Z Rwy 15³

¹NA when control tower closed.

²NA when local weather not available.

³Categories A, B, 900-2; Category C, 900-2½; Category D 900-2½.

BLACKSBURG, VA

VIRGINIA TECH/MONTGOMERY
EXECUTIVE (BCB) RNAV (GPS) Rwy 12
RNAV (GPS) Rwy 30

NA when local weather not available.

NAME ALTERNATE MINIMUMS

CHARLOTTESVILLE, VA

CHARLOTTESVILLE-
ALBEMARLE (CHO) ILS or LOC Rwy 3¹²³
RNAV (GPS) Rwy 3²⁴
RNAV (GPS) Y Rwy 21²⁵
RNAV (GPS) Z Rwy 21²⁶

¹NA when control tower closed.

²NA when local weather not available.

³Categories A, B, 1000-2; Categories C, D, 1000-3.

⁴Category D, 1000-3.

⁵Category D, 900-2½.

⁶Categories, A, B, C, D, 1000-4.

COLLEGE PARK, MD

COLLEGE PARK (CGS) RNAV (GPS) Rwy 15
NA when local weather not available.

CULPEPER, VA

CULPEPER RGNL (CJR)..... LOC Rwy 4¹
NDB RWY 4¹
RNAV (GPS) Rwy 4²
RNAV (GPS) Rwy 22²
VOR-A²

¹NA when FBO closed.

²NA when local weather not available.

CUMBERLAND, MD

GREATER CUMBERLAND
RGNL (CBE) LOC-A¹
LOC/DME Rwy 23
RNAV (GPS) Rwy 5²
RNAV (GPS) Rwy 23³

NA when local weather not available.

¹Categories A, B, 1300-2, Category C 1300-3, Category D 1500-3.

²Categories A, B, 1500-2, Category C 1500-3, Category D 1500-3.

³Categories A, B, 1100-2, Category C 1100-3.

22 AUG 2013 to 19 SEP 2013

22 AUG 2013 to 19 SEP 2013





ALTERNATE MINS

13234

M3



NAME ALTERNATE MINIMUMS HOT SPRINGS, VA

INGALLS FIELD (HSP) RNAV (GPS) Rwy 7¹
RNAV (GPS) Rwy 25²

NA when local weather not available.

¹Categories A, B, 1000-2; Category C, 1000-2½, Category D, 1000-3.

²Category C, 800-2½; Category D, 800-2½.

JONESVILLE, VA LEE COUNTY (0VG) RNAV (GPS) Rwy 7 RNAV (GPS) Rwy 25¹

NA when local weather not available.

¹Categories A, B, 1000-2; Category C, 1000-2½; Category D, 1000-3.

LEESBURG, VA LEESBURG EXECUTIVE (JYO) RNAV (GPS) Rwy 17

NA when local weather not available.

LEONARDTOWN, MD ST. MARY'S COUNTY RGNL (2W6) RNAV (GPS) Rwy 11 RNAV (GPS) Rwy 29

NA when local weather not available.

LOUISA, VA LOUISA COUNTY/ FREEMAN FIELD (LKU) RNAV (GPS) Rwy 27

NA when local weather not available.

LURAY, VA LURAY CAVERNS (LUA) NDB-A¹ RNAV (GPS) Rwy 4² RNAV (GPS) Rwy 22³ VOR/DME-B⁴

NA when local weather not available.

¹Categories A, B, 1500-2, Category C, 1500-3.

²Categories A, B, 1400-2, Category C, 1400-3.

³Categories A, B, 1000-2, Category C, 1000-2½.

⁴Categories A, B, 1300-2, Category C, 1300-3.

LYNCHBURG, VA LYNCHBURG RGNL/PRESTON GLENN FIELD (LYH) ILS or LOC Rwy 4¹² RNAV (GPS) Rwy 4³ RNAV (GPS) Rwy 22³ VOR/DME Rwy 22⁴ VOR Rwy 4³

¹ILS, LOC, NA when control tower closed.

²ILS, Categories A,B, 800-2; Category C, 900-2½, Category D, 900-2¾. LOC, Category C, 900-2½, Category D, 900-2¾.

³Category C, 900-2½; Category D, 900-2¾.

⁴Categories A,B, 900-2; Category C, 900-2½, Category D, 900-2¾.

NAME ALTERNATE MINIMUMS MARION/WYTHEVILLE, VA

MOUNTAIN
EMPIRE (MKJ) RNAV (GPS) Rwy 26
NA when local weather not available.
Category C, 800-2½.

MARTINSVILLE, VA BLUE RIDGE (MTV) RNAV (GPS) Rwy 12 RNAV (GPS) Rwy 30¹

NA when local weather not available.

¹Category D, 800-2½.

MELFA, VA ACCOMACK COUNTY (MFV) RNAV (GPS) Rwy 3 RNAV (GPS) Rwy 21

NA when local weather not available.

NEWPORT NEWS, VA NEWPORT NEWS/WILLIAMSBURG INTL (PHF) ILS or LOC Rwy 7¹² ILS or LOC Rwy 25¹² LOC/DME Rwy 20¹² NDB Rwy 2² NDB Rwy 20²³

RNAV (GPS) Rwy 2²

RNAV (GPS) Rwy 7²

RNAV (GPS) Rwy 20²

RNAV (GPS) Rwy 25²

¹NA when control tower closed.

²NA when local weather not available.

³Categories A, B, 900-2, Category C, 900-2½, Category D, 900-2¾.

NORFOLK, VA CHESAPEAKE RGNL (CPK) ILS or LOC Rwy 5 RNAV (GPS) Rwy 5 RNAV (GPS) Rwy 23 VOR/DME Rwy 23

NA when local weather not available.

OCEAN CITY, MD OCEAN CITY MUNI (OXB) RNAV (GPS) Rwy 2¹ RNAV (GPS) Rwy 32¹² VOR-A³

¹NA when local weather not available.

²Category D, 800-2½.

³Categories A, B, 900-2; Category C, 900-2½; Category D, 900-2¾.

22 AUG 2013 to 19 SEP 2013

22 AUG 2013 to 19 SEP 2013



ALTERNATE MINS

13234

M3

NE-3





ALTERNATE MINS

13234

M4



NAME ALTERNATE MINIMUMS

PETERSBURG, VA

DINWIDDIE
COUNTY (PTB)..... RNAV (GPS) Rwy 5
RNAV (GPS) Rwy 23
VOR Rwy 23

NA when local weather not available.

PHILLIPS AAF (KAPG)

ABERDEEN PROVING
GROUND, MD..... NDB Rwy 22
VOR Rwy 22
VOR/DME Rwy 22
RNAV (GPS) Rwy 22

NA when control tower closed.

RICHLANDS, VA

TAZEWELL
COUNTY (JFZ)..... LOC/DME Rwy 25
RNAV (GPS) Rwy 7
RNAV (GPS) Rwy 25

NA when local weather not available.

RICHMOND, VA

RICHMOND INTL (RIC) ILS or LOC Rwy 16
ILS, Categories A, B, 800-2; Category C,
800-2½; Category D, 800-2½.
LOC, Category C, 800-2½; Category D,
800-2½.

RICHMOND/ASHLAND, VA

HANOVER
COUNTY MUNI (OFF) RNAV (GPS) Rwy 16
VOR Rwy 16¹

NA when local weather not available.

¹Category C, 800-2½, Category D, 800-2½.

ROANOKE, VA

ROANOKE RGNL/WOODRUM
FIELD (ROA) ILS or LOC Rwy 34¹
LDA Rwy 6²
RNAV (GPS) Rwy 6³
RNAV (GPS) Rwy 24⁴
RNAV (GPS) Rwy 34⁵
VOR/NDB Rwy 34⁶

¹ILS, LOC, Categories A, B, 900-2; Categories C, D, 900-2½.

²Categories A, B, 1600-2; Categories C, D, 1600-3.

³Categories A, B, 900-2; Category C, 900-2½; Category D, 900-2½.

⁴Categories A, B, 1900-2; Categories C, D, 1900-3.

⁵Categories A, B, 1200-2; Categories C, D, 1200-3.

⁶Categories A, B, 1400-2; Categories C, D, 1400-3.

NAME ALTERNATE MINIMUMS

SALISBURY, MD

SALISBURY-OCEAN CITY
WICOMICO RGNL (SBY)..... ILS or LOC Rwy 32
RNAV (GPS) Rwy 5
RNAV (GPS) Rwy 14
RNAV (GPS) Rwy 23
RNAV (GPS) Rwy 32
VOR Rwy 5
VOR Rwy 23¹
VOR Rwy 32

NA when local weather not available.

¹Categories A, B, 1100-2; Categories C, D, 1100-3.

SOUTH HILL, VA

MECKLENBURG-
BRUNSWICK RGNL (AVC)..... LOC Rwy 1
RNAV (GPS) Rwy 1
RNAV (GPS) Rwy 19

NA when local weather not available.

**STAUNTON-WAYNESBORO-
HARRISONBURG, VA**

SHENANDOAH VALLEY
RGNL (SHD) ILS or LOC Rwy 5¹
NDB Rwy 5
RNAV (GPS) Rwy 5
RNAV (GPS) Rwy 23

NA when local weather not available.

¹ILS, Category D, 700-2.

SUFFOLK, VA

SUFFOLK
EXECUTIVE (SFQ)..... RNAV (GPS) Rwy 4
RNAV (GPS) Rwy 7
RNAV (GPS) Rwy 22
RNAV (GPS) Rwy 25

NA when local weather not available.

WALLOPS ISLAND, VA

WALLOPS FLIGHT
FACILITY (WAL) ... VOR/DME or TACAN Rwy 10
Categories A, B, 900-2; Category C, 900-2½;
Category D, 900-2½.

WARRENTON, VA

WARRENTON-
FAQUIER (HWY) RNAV (GPS) Rwy 15
RNAV (GPS) Rwy 33
VOR Rwy 15¹

NA when local weather not available.

¹Cat D 800-2½.

22 AUG 2013 to 19 SEP 2013

22 AUG 2013 to 19 SEP 2013



ALTERNATE MINS

13234

M4

NE-3





13234



IFR TAKEOFF MINIMUMS AND (OBSTACLE) DEPARTURE PROCEDURES

Civil Airports and Selected Military Airports

ALL USERS: Airports that have Departure Procedures (DPs) designed specifically to assist pilots in avoiding obstacles during the climb to the minimum enroute altitude, and/or airports that have civil IFR takeoff minimums other than standard, are listed below. Takeoff Minimums and Departure Procedures apply to all runways unless otherwise specified. Altitudes, unless otherwise indicated, are minimum altitudes in MSL.

DPs specifically designed for obstacle avoidance are referred to as Obstacle Departure Procedures (ODPs) and are described below in text, or published separately as a graphic procedure. If the (Obstacle) DP is published as a graphic procedure, its name will be listed below, and it can be found in either this volume (civil), or the applicable military volume, as appropriate. Users will recognize graphic obstacle DPs by the term "(OBSTACLE)" included in the procedure title; e.g., TETON TWO (OBSTACLE). If not specifically assigned a departure procedure (i.e., ODP, SID, or radar vector) as part of an IFR clearance, an ODP may be required to be flown for obstacle clearance, even though not specifically stated in the IFR clearance. When doing so in this manner, ATC should be informed when the ODP being used contains a specified route to be flown, restrictions before turning, and/or altitude restrictions.

Graphic DPs designed by ATC to standardize traffic flows, ensure aircraft separation and enhance capacity are referred to as "Standard Instrument Departures (SIDs)". SIDs also provide obstacle clearance and are published under the appropriate airport section. ATC clearance must be received prior to flying a SID.

CIVIL USERS NOTE: Title 14 Code of Federal Regulations Part 91 prescribes standard takeoff rules and establishes takeoff minimums for certain operators as follows: (1) Aircraft having two engines or less - one statute mile. (2) Aircraft having more than two engines - one-half statute mile. These standard minima apply in the absence of any different minima listed below.

MILITARY USERS NOTE: Civil (nonstandard) takeoff minima are published below. For military takeoff minima, refer to appropriate service directives.

NAME TAKEOFF MINIMUMS

NAME TAKEOFF MINIMUMS

ABINGDON, VA

VIRGINIA HIGHLANDS (VJI)
AMDT 2 10266 (FAA)

TAKEOFF MINIMUMS: Rwy 6, 300-2 or 300-1 1/4 w/ min. climb of 225' per NM to 2500, or std. w/ min. climb of 749' per NM to 2500.
DEPARTURE PROCEDURE: Rwy 6, climb heading 061° and HMV VORTAC R-034 to 5500 before proceeding on course. Rwy 24, climb heading 241° to 3700 before proceeding on course.
NOTE: Rwy 6, vehicle 89' from DER, 411' left of centerline, 15' AGL/2094' MSL. Obstruction light 504' from DER, 314' left of centerline, 22' AGL/2122' MSL. Trees beginning 214' from DER, 245' right of centerline, up to 100' AGL/2240' MSL. Trees beginning 579' from DER, 35' left of centerline, up to 100' AGL/2379' MSL. Rwy 24, hangar vent 13' from DER, 496' left of centerline, 55' AGL/2086' MSL. Buildings 828' from DER, 628' left of centerline, up to 25' AGL/2084' MSL. Trees beginning 2222' from DER, 262' right of centerline, up to 100' AGL/2200' MSL. Tree 3592' from DER, 14' left of centerline, 100' AGL/2167' MSL.

ANNAPOLIS, MD

LEE (ANP)
ORIG 01361 (FAA)

TAKEOFF MINIMUMS: Rwy 30, 300-1 or std. with a min. climb of 410' per NM to 400.
DEPARTURE PROCEDURE: Rwy 12, climb runway heading to 700 before proceeding on course. Rwy 30, climb runway heading to 1000 before proceeding right on course. Climb runway heading to 700 before proceeding left on course.
NOTE: Rwy 12, cross DER at or above 35' AGL/66' MSL. Rwy 30, trees, 1433' from DER, 85' left of centerline, 100' AGL/139' MSL. Cross DER at or above 35' AGL/66' MSL.

22 AUG 2013 to 19 SEP 2013

22 AUG 2013 to 19 SEP 2013

13234





TAKEOFF MINIMUMS AND (OBSTACLE) DEPARTURE PROCEDURES



13234

BALTIMORE, MD

BALTIMORE/WASHINGTON INTL THURGOOD MARSHALL (BWI)

AMDT 9 10266 (FAA)

TAKEOFF MINIMUMS: **Rwy 4**, 300-1½ or std. w/ min. climb of 210' per NM to 500, or alternatively, with standard takeoff minimums and a normal 200' per NM climb gradient, takeoff must occur no later than 1300' prior to DER. **Rwy 33R**, std. w/ min. climb of 251' per NM to 2000.

DEPARTURE PROCEDURE: **Rwy 4**, climb heading 044° to 800 before turning left. **Rwy 28**, climb heading 285° to 900 before turning right. **Rwy 33L**, climb heading 320° to 2000 before turning right.

NOTE: **Rwy 4**, rod on lighted pole 1921' from DER, 329' right of centerline, 58' AGL/197' MSL. Light on pole 2177' from DER, 294' left of centerline, 58' AGL/197' MSL. Light on pole 1755' from DER, 482' right of centerline, 47' AGL/186' MSL. Tree 2370' from DER, 481' right of centerline, 60' AGL/199' MSL. Tank 1.2 NM from DER, 2274' left of centerline, 173' AGL/338' MSL. **Rwy 10**, building 52' from DER, 319' left of centerline, 13' AGL/133' MSL. **Rwy 15L**, trees beginning 648' from DER, 619' left of centerline, up to 68' AGL/167' MSL. Light on pole 921' from DER, 618' left of centerline, 62' AGL/161' MSL. **Rwy 15R**, trees beginning 1144' from DER, 740' right of centerline, up to 53' AGL/172' MSL. **Rwy 22**, light poles beginning 213' from DER, 365' left of centerline, up to 30' AGL/189' MSL. **Rwy 28**, tree 1392' from DER, 736' left of centerline, 77' AGL/176' MSL. **Rwy 33L**, fence 203' from DER, 517' right of centerline, 9' AGL/149' MSL. Tree 2250' from DER, 843' right of centerline, 66' AGL/205' MSL. Microwave antenna on building, 4725' from DER, 907' right of centerline, 126' AGL/265' MSL. Building 4693' from DER, 874' right of centerline, 127' AGL/266' MSL. Building-tower 4734' from DER, 907' right of centerline, 126' AGL/265' MSL. Building 4693' from DER, 874' right of centerline, 127' AGL/266' MSL. Building-tower 4734' from DER, 922' right of centerline, 140' AGL/260' MSL. **Rwy 33R**, trees beginning 2925' from DER, 321' left of centerline, up to 70' AGL/289' MSL. Trees beginning 975' from DER, 116' right of centerline, up to 83' AGL/262' MSL. Light on pole 2384' from DER, 837' right of centerline, 55' AGL/254' MSL. Light on pole 2736' from DER, 247' right of centerline, 17' AGL/216' MSL. Pole 3781' from DER, 370' right of centerline, 40' AGL/242' MSL. Building 998' from DER, 654' left of centerline, 24' AGL/183' MSL. Signal 2453' from DER, 904' left of centerline, 45' AGL/204' MSL. Light on pole 3869' from DER, 603' left of centerline, 72' AGL/251' MSL.

BALTIMORE, MD (CON'T)

MARTIN STATE (MTN)

AMDT 4 00279 (FAA)

TAKEOFF MINIMUMS: **Rwy 15**, 800-2 or std. with a min. climb of 300' per NM to 1000. **Rwy 33**, 1300-2 or std. with a min. climb of 340' per NM to 1700'.

DEPARTURE PROCEDURE: **Rwy 15**, climb runway heading to 1000 before proceeding on course; or when directed by ATC, climbing right turn heading 190° to 1000 before proceeding on course.

NOTE: **Rwy 15**, trees 1960' from DER 684' left of centerline, 78' AGL/88' MSL, trees 3395' from DER, 585' left of centerline, 92' AGL/102' MSL. **Rwy 33**, pole 1553' from DER, across centerline, 68' AGL/90' MSL. Trees 2342' from DER, across centerline 86' AGL/108' MSL.

BLACKSBURG, VA

VIRGINIA TECH/MONTGOMERY EXECUTIVE (BCB)

AMDT 5 11181 (FAA)

TAKEOFF MINIMUMS: **Rwy 12**, 400-1¼ or std. w/ min. climb of 500' per NM to 2700.

DEPARTURE PROCEDURE: **Rwy 12**, climbing right turn direct PSK VORTAC to 3500 before proceeding on course. **Rwy 30**, climbing left turn direct PSK VORTAC to 4100 before proceeding on course.

NOTE: **Rwy 12**, trees beginning 19' from DER, 418' left of centerline, up to 100' AGL/2453' MSL. Trees beginning 242' from DER, 151' right of centerline, up to 100' AGL/2279' MSL. **Rwy 30**, rising terrain, trees, and poles beginning 3' from DER, 273' right of centerline, up to 45' AGL/2165' MSL. Rising terrain, trees, and poles beginning 90' from DER, 187' left of centerline, up to 100' AGL/2222' MSL. Vehicle on road beginning 567' from DER left and right of centerline up to 15' AGL/2146' MSL. Fence beginning 697' from DER, left and right of centerline, up to 10' AGL/2136' MSL.

BLACKSTONE, VA

ALLEN C. PERKINSON MUNI/BLACKSTONE AAF (BKT)

AMDT 2 12152 (FAA)

TAKEOFF MINIMUMS: **Rwy1**, std. w/min. climb of 230' per NM to 1700 or 1000-2½ for climb in visual conditions. **Rwy 19**, NA - environmental.

DEPARTURE PROCEDURE: **Rwy 1**, for climb in visual conditions: Cross Allen C. Perkinson Muni/Blackstone AAF airport at or above 1300 MSL before proceeding on course. When executing VCOA, notify ATC prior to departure. **Rwy 4**, climb heading 044° to 1300 before turning left.

NOTE: **Rwy 1**, trees beginning 1000' from DER, 277' left of centerline, up to 100' AGL/559' MSL. Trees beginning 1200' from DER, 249' right of centerline, up to 100' AGL/549' MSL. **Rwy 4**, trees beginning 674' from DER, 560' left of centerline, up to 61' AGL/490' MSL. Trees beginning 143' from DER, 492' right of centerline, up to 96' AGL/515' MSL. **Rwy 22**, trees beginning 274' from DER, 532' left of centerline, up to 100' AGL/509' MSL. Terrain and trees beginning 41' from DER, 405' right of centerline, up to 100' AGL/519' MSL.

NOTE: Do not overfly Ammunition Dump 1.1 NM Southwest of runway 4.

22 AUG 2013 to 19 SEP 2013

22 AUG 2013 to 19 SEP 2013

13234



TAKEOFF MINIMUMS AND (OBSTACLE) DEPARTURE PROCEDURES





TAKEOFF MINIMUMS AND (OBSTACLE) DEPARTURE PROCEDURES



BRIDGEWATER, VA

BRIDGEWATER AIRPARK (VBW)
AMDT 2A 11349 (FAA)

TAKEOFF MINIMUMS: **Rwy 15**, 300-2½ w/ min. climb of 280'/NM to 3900, or std. w/ min. climb of 440'/NM to 2600, or 2400-3 for climb in visual conditions. **Rwy 33**, 800-2½ w/ min. climb of 390'/NM to 3900, or std. w/ min. climb of 522' per NM to 2800, or 2400-3 for climb in visual conditions.

DEPARTURE PROCEDURE: **Rwy 15**, climb heading 152° to 3900, or for climb in visual conditions, cross Bridgewater Air Park at or above 3400 before proceeding on course. **Rwy 33**, climb heading 347° to 5000, or for climb in visual conditions, cross Bridgewater Air Park at or above 3400 before proceeding on course.

NOTE: **Rwy 15**, vehicles on roadway 53' from DER, 14' right of centerline, 15' AGL/1180' MSL. Trees beginning 158' from DER, 259' right of centerline, up to 100' AGL/1279' MSL. Trees beginning 499' from DER, 628' left of centerline, up to 100' AGL/1279' MSL. Pole 908' from DER, 183' left of centerline, 35' AGL/1200' MSL. Trees beginning 3205' from DER, 1329' right of centerline, up to 100' AGL/1359' MSL. **Rwy 33**, trees beginning 318' from DER, 252' right of centerline, up to 100' AGL/1249' MSL. Trees beginning 470' from DER, 191' left of centerline, up to 100' AGL/1249' MSL.

CAMP PEARY LNDG STRIP (KW94)

WILLIAMSBURG, VA 08213

TAKEOFF OBSTACLES: **Rwy 5**: trees and multiple transmission lines 120' from DER, 184' left of centerline up to 95' AGL/126' MSL. Trees and multiple transmission lines 162' from DER, 257' right of centerline up to 100' AGL/132' MSL. **Rwy 23**: trees and multiple transmission lines 1891' from DER, 69' left of centerline up to 95' AGL/136' MSL. Multiple trees and transmission lines 537' from DER, 437' right of centerline up to 110' AGL/151' MSL.

CHARLOTTESVILLE, VA

CHARLOTTESVILLE-ALBEMARLE (CHO)
AMDT 10 13234 (FAA)

TAKEOFF MINIMUMS: **Rwy 3**, std. w/ min. climb of 342' per NM to 1500, or 1200-2 for climb in visual conditions.

DEPARTURE PROCEDURE: **Rwy 3**, climb on heading 030° to 1500 then climbing right turn direct GVE VORTAC before proceeding on course. For climb in visual conditions: cross Charlottesville-Albemarle airport at or above 1700 then proceed direct GVE VORTAC before proceeding on course. When executing VCOA, notify ATC prior to departure. **Rwy 21**, climb on heading 210° to 1400 then climbing left turn direct GVE VORTAC before proceeding on course.

NOTE: **Rwy 3**, trees beginning 183' from DER, left and right of centerline, up to 100' AGL/684' MSL. **Rwy 21**, vehicles on road, 32' from DER, 496' right of centerline, up to 17' AGL/667' MSL. Light support structures, 1178' from DER, 778' right of centerline, 62' AGL/670' MSL.

CHASE CITY, VA

CHASE CITY MUNI (CXE)

NOTE: **Rwy 18**, trees beginning 191' from DER, 116' left of centerline, up to 100' AGL/609' MSL. Multiple trees beginning 327' from DER, 133' right of centerline, up to 100' AGL/599' MSL. **Rwy 36**, trees beginning 164' from DER, 154' right of centerline, up to 100' AGL/649' MSL. Trees beginning 470' from DER, 124' left of centerline, up to 100' AGL/649' MSL.

CHURCHVILLE, MD

HARFORD COUNTY (0W3)
AMDT 1 10322 (FAA)

TAKEOFF MINIMUMS: **Rwys 1,14,19,32**, N/A-Environmental. **Rwy 10**, 300-2 or std. w/ min. climb of 210' per NM to 800' or alternatively, with std. takeoff minimums and a normal 200' per NM climb gradient, takeoff must occur no later than 1500' prior to DER. NOTE: **Rwy 10**, vehicles on roadway beginning 328' from DER, left and right of centerline, up to 17' AGL/416' MSL. Trees beginning 690' from DER, 271' left of centerline, up to 100' AGL/499' MSL. Trees beginning 2226' from DER, 454' right of centerline, up to 100' AGL/519' MSL. Rising terrain beginning 1.6 NM from DER, 2510' left of centerline, up to 639' MSL. **Rwy 28**, trees beginning 665' from DER, left and right of centerline, up to 100' AGL/519' MSL.

BROOKNEAL, VA

BROOKNEAL/CAMPBELL COUNTY (0V4)
ORIG 07270 (FAA)

NOTE: **Rwy 6**, multiple trees beginning 569' from DER, 252' right of centerline, up to 100' AGL/689' MSL. **Rwy 24**, multiple trees beginning 334' from DER, 286' right of centerline, up to 100' AGL/679' MSL. Multiple trees beginning 1377' from DER, 850' left of centerline, up to 100' AGL/719' MSL.

BUMPASS, VA

LAKE ANNA (7W4)
ORIG 11349 (FAA)

DEPARTURE PROCEDURE: **Rwy 8**, climb heading 085° to 800 before turning. **Rwy 26**, climb heading 265° to 800 before turning.

NOTE: **Rwy 8**, trees beginning 32' from DER, 114' right of centerline, up to 100' AGL/469' MSL. Buildings beginning 162' from DER, 152' left of centerline, up to 25' AGL/384' MSL. **Rwy 26**, trees beginning 31' from DER, 97' left and 119' right of centerline, up to 100' AGL/459' MSL.

CAMBRIDGE, MD

CAMBRIDGE-DORCHESTER (CGE)
AMDT 1 80276 (FAA)

TAKEOFF MINIMUMS: **Rwy 34**, 300-1.

22 AUG 2013 to 19 SEP 2013

22 AUG 2013 to 19 SEP 2013



TAKEOFF MINIMUMS AND (OBSTACLE) DEPARTURE PROCEDURES





TAKEOFF MINIMUMS AND (OBSTACLE) DEPARTURE PROCEDURES



13234

CLARKSVILLE, VA

LAKE COUNTRY RGNL (W63)
AMDT 1 10098 (FAA)

NOTE: **Rwy 4**, trees beginning 5' from DER, 438' left of centerline, up to 100' AGL/539' MSL. Building 27' from DER, 94' right of centerline, 20' AGL/449' MSL. Vehicles on road beginning 200' from DER, from left to right of centerline, up to 15' AGL/444' MSL. Warehouse 313' from DER, on centerline, 75' AGL/495' MSL. Building 385' from DER, 257' right of centerline, 20' AGL/439' MSL. Trees beginning 444' from DER, 518' right of centerline, up to 100' AGL/509' MSL. **Rwy 22**, trees beginning 3' from DER from 452' left of centerline to 547' right of centerline, up to 100' AGL/422' MSL. Trees beginning 1624' from DER, from 632' left of centerline to 535' right of centerline, up to 100' AGL/485' MSL.

CLINTON, MD

WASHINGTON EXECUTIVE/HYDE FIELD (W32)
ORIG -A 10126 (FAA)

NOTE: **Rwy 5**, Vehicle on road beginning 20' from DER, on centerline, up to 15' AGL/261' MSL. Antenna on tower beginning 2333' from DER, 556' right of centerline, 137' AGL/361' MSL. **Rwy 23**, Vehicle on road 23' from DER, 329' left of centerline, 15' AGL/260' MSL.

COLLEGE PARK, MD

COLLEGE PARK (CGS)
AMDT 3B 08157 (FAA)

TAKEOFF MINIMUMS: **Rwy 15**, 400-2¼ or std. w/ min. climb of 486' per NM to 600. **Rwy 33**, 400-2½ or std. w/ min. climb of 433' per NM to 600.

DEPARTURE PROCEDURE: **Rwy 15**, climb heading 149° to 600 before proceeding on course. **Rwy 33**, climb heading 329° to 600 before proceeding on course.

NOTE: **Rwy 15**, trees beginning 2799' from DER, 570' left of centerline, up to 100' AGL/259' MSL. Antenna 1.1 NM from DER, 149' left of centerline, 167' AGL/270' MSL. **Rwy 33**, terrain beginning 1 NM from DER, 3700' right of centerline to 3700' left of centerline, up to 439' MSL. Building 3811' from DER, 467' right of centerline, 184' AGL/254' MSL. Tower 1.9 NM from DER, 1447' left of centerline, 255' AGL/405' MSL.

CREWE, VA

CREWE MUNI (W81)
ORIG 11013 (FAA)

NOTE: **Rwy 15**, trees beginning 140' from DER, 464' left of centerline, up to 100' AGL/449' MSL. Trees beginning 406' from DER, 448' right of centerline, up to 100' AGL/509' MSL. **Rwy 33**, trees beginning 985' from DER, 587' left of centerline, up to 100' AGL/539' MSL. Trees beginning 520' from DER, 513' right of centerline, up to 100' AGL/529' MSL.

CRISFIELD, MD

CRISFIELD MUNI (W41)
ORIG 03023 (FAA)

TAKEOFF MINIMUMS: **Rwys 6, 24**, NA-obstacles
DEPARTURE PROCEDURE: **Rwy 14**, climb via heading 142° to 900 before proceeding on course. **Rwy 32**, climb via heading 322° to 900 before proceeding on course.

CULPEPER, VA

CULPEPER RGNL (CJR)
ORIG 07354 (FAA)

DEPARTURE PROCEDURE: **Rwy 22**, climb heading 218° to 1000 before turning right.

NOTE: **Rwy 4**, tree 79' from DER, 418' left of centerline 86' AGL/337' MSL. Vehicle on road 207' from DER, 367' left of centerline, 15' AGL/330' MSL. Tree 3396' from DER, 514' right of centerline, 91' AGL/410' MSL. **Rwy 22**, tree 128' from DER, 332' left of centerline, 25' AGL/334' MSL. Multiple trees beginning 272' from DER, 179' right of centerline up to 22' AGL/341' MSL. Pole 1480' from DER, 68' left of centerline, 27' AGL/356' MSL.

CUMBERLAND, MD

GREATER CUMBERLAND RGNL (CBE)
AMDT 6 11237 (FAA)

TAKEOFF MINIMUMS: **Rwys 11, 29**, N/A-Obstacles.

Rwy 5, std. w/ min. climb of 320' per NM to 3200 or 2400-3 for climb in visual conditions. **Rwy 23**, 1200-3 w/ min. climb of 480' per NM to 2000 or std. w/min. climb of 929' per NM to 2400 or 2400-3 for climb in visual conditions.

DEPARTURE PROCEDURE: **Rwy 5**, climb heading 049° to 2300 before proceeding on course, or for climb in visual conditions cross Greater Cumberland Rgnl Airport at or above 3000 before proceeding on course. **Rwy 23**, climbing left turn on heading 140° to intercept 177° bearing from CBE NDB to 3000 before proceeding on course, or for climb in visual conditions cross Greater Cumberland Rgnl Airport at or above 3000 before proceeding on course.

NOTE: **Rwy 5**, trees beginning 146' from DER, left and right of centerline, up to 100' AGL/821' MSL. Obstruction light on antenna, 1.3 NM from DER, 2543' left of centerline, 210' AGL/1 076' MSL. **Rwy 23**, trees beginning 53' from DER, 497' left and right of centerline, up to 100' AGL/929' MSL. Obstruction light on DME 169' from DER, 269' left of centerline, 59' AGL/732' MSL. Tower 2029' from DER, 757' right of centerline, up to 99' AGL/959' MSL.

DANVILLE, VA

DANVILLE RGNL (DAN)
AMDT 1 10098 (FAA)

TAKEOFF MINIMUMS: **Rwy 13**, 300-1¼ or std. with a min. climb of 299' per NM to 900.

NOTE: **Rwy 2**, tree 1092' from DER, 8' left of centerline, 67' AGL/586' MSL. Tree 1524' from DER, 659' right of centerline, 67' AGL/606' MSL. **Rwy 13**, trees beginning 569' from DER, 300' right of centerline, up to 100' AGL/759' MSL. Trees beginning 680' from DER, 308' left of centerline, up to 65' AGL/604' MSL. **Rwy 20**, tree 1328' from DER, 633' right of centerline, 30' AGL/569' MSL. **Rwy 31**, hanger 395' from DER, 573' left of centerline, 23' AGL/602' MSL. Pole 1002' from DER, 375' left of centerline, 29' AGL/608' MSL. Antenna 1165' from DER, 416' left of centerline, 62' AGL/641' MSL. Trees beginning 1206' from DER, 287' left of centerline, up to 80' AGL/699' MSL. Trees beginning 2180' from DER, 632' right of centerline, up to 62' AGL/681' MSL.

DAVISON AAF (KDA)

FORT BELVOIR, VA

.....**Rwy 32**, 300-1*

* Or standard with minimum climb of 380/NM to 500.
TAKEOFF OBSTACLES: **Rwy 32**, 63' AGL tree 865' from DER, 82' right of centerline.

22 AUG 2013 to 19 SEP 2013

22 AUG 2013 to 19 SEP 2013

13234



TAKEOFF MINIMUMS AND (OBSTACLE) DEPARTURE PROCEDURES





TAKEOFF MINIMUMS AND (OBSTACLE) DEPARTURE PROCEDURES



DOVER AFB (KDOV)

DOVER, DE 09155
 TAKEOFF OBSTACLES: **Rwy 1**, possible aircraft/ vehicles at DER hammerhead just left of rwy centerline, up to 65' AGL/91' MSL. **Rwy 19**, possible aircraft/vehicles at DER hammerhead just right of rwy centerline, up to 65' AGL/91' MSL. Rwy 32, multiple C-5s parked on ramp beginning 1535' thru 2780' from DER, 1010' left of centerline, up to 65' AGL/98' MSL. Bldg 3900' from DER, 760' left of centerline, 88' AGL/119' MSL. Possible taxiing aircraft/vehicles on taxi lane Alpha beginning 565' thru 2780' from DER, 750' left of centerline, up to 65' AGL/98' MSL. Possible large aircraft 2800' from DER, on taxiway Golf just left of centerline, up to 65' AGL/92' MSL.

DOVER/CHESWOLD, DE

DELAWARE AIRPARK (33N)
 ORIG 07186 (FAA)
 NOTE: **Rwy 9**, multiple trees beginning 26' from DER, 50' left of centerline, up to 100' AGL/149' MSL. Pole line 1151' from DER, 36' right of centerline, 50' AGL/99' MSL. Multiple trees beginning 815' from DER, 505' right of centerline, up to 100' AGL/154' MSL. **Rwy 27**, multiple trees beginning 231' from DER, 85' left of centerline, up to 100' AGL/169' MSL. Multiple trees beginning 829' from DER, 43' right of centerline, up to 100' AGL/164' MSL.

DUBLIN, VA

NEW RIVER VALLEY (PSK)
 AMDT 2 09071 (FAA)
 TAKEOFF MINIMUMS: **Rwy 24**, 200-1½ or std. w/ min. climb of 310' per NM to 2400.
 DEPARTURE PROCEDURE: **Rwy 6**, climbing right turn heading 150° to intercept PSK VORTAC R-120 outbound to 5200 before proceeding on course.
Rwy 24, climb heading 238° to 4000 before proceeding on course.
 NOTE: **Rwy 6**, tree 321' from DER, 493' left of centerline, 100' AGL/2112' MSL. Terrain 122' from DER, 460' left of centerline, up to 2105' MSL. **Rwy 24**, pole 1223' from DER, 671' right of centerline, 42' AGL/2161' MSL. Pole 669' from DER, 558' right of centerline, 18' AGL/2137' MSL. Pole 4851' from DER, 1170' left of centerline, 32' AGL/2231' MSL. Tower 5078' from DER 1017' left of centerline, 101' AGL/2300' MSL. Trees 226' from DER, 271' left of centerline, up to 103' AGL/2302' MSL. Terrain 68' from DER, 281' right of centerline, up to 2116' MSL.

EASTON, MD

EASTON/NEWMAM FIELD (ESN)
 ORIG 07242 (FAA)
 TAKEOFF MINIMUMS: **Rwy 22**, 300-2 or std. w/ climb of 241' per NM to 500.
 NOTE: **Rwy 4**, vehicles on roads beginning 199' from DER, 350' right of centerline, up to 15' AGL/102' MSL. Multiple poles beginning 434' from DER, 88' right of centerline, up to 31' AGL/100' MSL. Multiple trees beginning 1485' from DER, 46' right of centerline, up to 64' AGL/133' MSL. Tree 1509' from DER, 38' left of centerline, 47' AGL/116' MSL. **Rwy 15**, fence 2' from DER, 411' left of centerline, 8' AGL/57' MSL. Multiple poles beginning 721' from DER, 183' left of centerline, up to 64' AGL/123' MSL. Multiple poles beginning 828' from DER, 514' right of centerline, up to 26' AGL/85' MSL. Multiple trees beginning 862' from DER, 275' left of centerline, up to 89' AGL/148' MSL. Multiple trees beginning 1357' from DER, 238' right of centerline, up to 94' AGL/153' MSL. **Rwy 22**, tree 1251' from DER, 786' right of centerline, 56' AGL/95' MSL. Multiple trees beginning 1323' from DER, 759' left of centerline, up to 90' AGL/129' MSL. Tower 1.6 NM from DER, 2373' left of centerline, 276' AGL/291' MSL. **Rwy 33**, multiple trees 10' from DER, 19' right of centerline, up to 139' AGL/158' MSL. Vehicle on road 352' from DER, 405' right of centerline, 15' AGL/59' MSL. Pole 888' from DER, 409' left of centerline, 19' AGL/58' MSL. Multiple trees beginning 1153' from DER, 245' left of centerline, up to 99' AGL/118' MSL.

ELKTON, MD

CECIL COUNTY (58M)
 ORIG 07361 (FAA)
 TAKEOFF MINIMUMS: NOTE: **Rwy 13**, cross DER at or above 27' AGL/89' MSL. **Rwy 31**, 300-1½ or std. w/ min. climb of 290' per NM to 400.
 DEPARTURE PROCEDURE: **Rwy 31**, climb heading 308° to 900 before turning left.
 NOTE: **Rwy 13**, trees 185' from DER, 110' right of centerline, 50' AGL/113' MSL. Trees 325' from DER, 125' left of centerline, 75' AGL/138' MSL. **Rwy 31**, trees, 1350' from DER, on centerline, 115' AGL/221' MSL. Trees beginning 1050' from DER, 781' left to 781' right of centerline, up to 100' AGL/309' MSL.

EMPORIA, VA

EMPORIA-GREENSVILLE RGNL (EMV)
 ORIG 09155 (FAA)
 NOTE: **Rwy 15**, vehicle on roadway 21' from DER, 291' left of centerline, up to 15' AGL/124' MSL. Trees beginning 56' from DER, 245' right of centerline, up to 60' AGL/169' MSL. Trees beginning 98' from DER, 231' left of centerline, up to 60' AGL/169' MSL. Trees beginning 1387' from DER, 387' left of centerline, up to 60' AGL/149' MSL. **Rwy 33**, trees beginning 115' from DER, 276' right of centerline, up to 60' AGL/189' MSL. Trees beginning 138' from DER, 321' left of centerline, up to 60' AGL/189' MSL. Vehicle on roadway, 163' from DER, 524' right of centerline, up to 15' AGL/144' MSL. Vehicle on roadway, 222' from DER, 534' left of centerline, up to 17' AGL/146' MSL.

22 AUG 2013 to 19 SEP 2013

22 AUG 2013 to 19 SEP 2013





TAKEOFF MINIMUMS AND (OBSTACLE) DEPARTURE PROCEDURES



FARMVILLE, VA

FARMVILLE RGNL (FVX)
AMDT 1 10154 (FAA)

NOTE: **Rwy 3**, trees beginning 64' from DER, 156' left of centerline, up to 77' AGL/506' MSL. Trees beginning 149' from DER, 398' right of centerline, up to 93' AGL/502' MSL. **Rwy 21**, vehicle on road 97' from DER, 475' left of centerline, up to 15' AGL/422' MSL. Trees beginning 56' from DER, 21' right of centerline, up to 80' AGL/489' MSL. Trees beginning 553' from DER, 53' left of centerline, up to 55' AGL/491' MSL.

FELKER AAF (KFAF),

FORT EUSTIS, VA 08297

Rwy 14, 32 standard.

TAKEOFF OBSTACLES: **Rwy 14**: Tree 3133' from DER, 167' left of centerline, 103' AGL/112' MSL. **Rwy 32**: Crane 2938' from DER, 941' left of centerline, 114' AGL/124' MSL. Trees beginning 2931' from DER, 186' left of centerline up to 74' AGL/85' MSL.

FOREST, VA

NEW LONDON (W90)

ORIG 12152 (FAA)

TAKEOFF MINIMUMS: **Rwy 18**, 300-1 or std. w/min. climb of 511' per NM to 1000.

DEPARTURE PROCEDURE: **Rwy 18**, climb heading 176° to 2200 before proceeding on course. **Rwy 36**, climbing right turn heading 066° and on LYH R-005 outbound to 3500 before proceeding on course.

NOTE: **Rwy 18**, trees beginning at DER, left and right of centerline, up to 100' AGL/ 919' MSL. **Rwy 36**, trees beginning at DER, left and right of centerline, up to 100' AGL/979' MSL. Vehicle on roadway, 19' from DER, 186' left of centerline, up to 15' AGL/ 894' MSL.

FORT MEADE (ODENTON), MD

TIPTON (FME)

ORIG 02052 (FAA)

NOTE: **Rwy 10**, cross DER at or above 17' AGL/167' MSL. Trees 1052' right of DER, 88' AGL/238' MSL.

FRANKLIN, VA

FRANKLIN MUNI-JOHN BEVERLY ROSE (FKN)
AMDT 2 09071 (FAA)

NOTE: **Rwy 9**, trees beginning 1977' from DER, 349' left of centerline, up to 100' AGL/139' MSL. Trees beginning 1287' from DER, 236' right of centerline, up to 100' AGL/134' MSL. Vehicle on road 533' from DER, 604' right of centerline, 15' AGL/59' MSL. **Rwy 27**, trees beginning 100' from DER, 444' left of centerline, up to 100' AGL/134' MSL. Trees beginning 520' from DER, 520' right of centerline, up to 100' AGL/134' MSL. Vehicle on road 308' from DER, left to right of centerline, 15' AGL/44' MSL.

FREDERICK, MD

FREDERICK MUNI (FDK)
AMDT 3 11181 (FAA)

TAKEOFF MINIMUMS: **Rwy 5**, 400-2½ or std. w/min. climb of 260' per NM to 600. **Rwy 12**, 500-2¾ or std. w/min. climb of 385' per NM to 1000. **Rwy 30**, std. w/min. climb of 290' per NM to 700 or 1500-2½ for climb in visual conditions.

DEPARTURE PROCEDURE: **Rwy 5**, climbing left turn on FDK VOR R-010 to 1700 before proceeding on course.

Rwy 12, climb heading 124° to 900 before turning. **Rwy 23**, climb heading 228° to 1200 before turning right. **Rwy 30**, climbing right turn on FDK VOR R-010 to 2400 or for climb in visual conditions, cross Frederick Muni Airport at or above 1700 before proceeding on course.

NOTE: **Rwy 5**, trees beginning 1556' from DER, left and right of centerline, up to 100' AGL/599' MSL. Elevators beginning 4842' from DER, 332' right of centerline, up to 76' AGL/436' MSL. **Rwy 12**, rod on building, 171' from DER, 528' right of centerline, 40' AGL/321' MSL. Trees beginning 233' from DER, left and right of centerline, up to 100' AGL/764' MSL. Pole 5358' from DER, 45' right of centerline, 80' AGL/519' MSL. **Rwy 23**, vehicles on road beginning 135' from DER, 377' right of centerline, up to 17' AGL/320' MSL. Rising terrain beginning 193' from DER, 471' left of centerline, up to 310' MSL. Buildings and poles beginning 935' from DER, 286' right of centerline, up to 61' AGL/362' MSL. Pole 1526' from DER, 626' left of centerline, 46' AGL/367' MSL. **Rwy 30**, trees beginning 1096' from DER, 104' right of centerline, up to 69' AGL/356' MSL. Tower 1 NM from DER, 1945' left of centerline, 160' AGL/460' MSL.

FREDERICKSBURG, VA

SHANNON (EZF)

AMDT 1 11069 (FAA)

TAKEOFF MINIMUMS: **Rwys 15,33**, NA- Environmental. **Rwy 6**, 300-2¼ or std. w/min. climb of 270' per NM to 500. **Rwy 24**, 400-3 or std. with a min. climb of 380' per NM to 600.

DEPARTURE PROCEDURE: **Rwy 6**, climb heading 055° to 700 before turning left. **Rwy 24**, climb heading 235° to 700 before turning right.

NOTE: **Rwy 6**, hanger abeam DER, 208' left of centerline, 25' AGL/119' MSL. Trees abeam DER, 154' right of centerline, up to 100' AGL/189' MSL. Power lines abeam DER, 193' right of centerline, up to 75' AGL/164' MSL. Buildings abeam DER, 237' right of centerline, up to 25' AGL/114' MSL. Vehicle on road 237' from DER, left and right of centerline, up to 15' AGL/1' 04' MSL. Building 449' from DER, 234' left of centerline, 25' AGL/124' MSL. Building 382' from DER, 180' left of centerline, 25' AGL/104' MSL. Light poles beginning 439' from DER, 162' left of centerline, 75' AGL/154' MSL. Power lines beginning 315' from DER, 308' left of centerline, up to 75' AGL/154' MSL. Power lines beginning 613' from DER, left and right of centerline, up to 75' AGL/144' MSL. Building 668' from DER, 169' left of centerline, 25' AGL/104' MSL. Tower 4876' from DER, 1092' left of centerline, 210' AGL/250' MSL. **Rwy 24**, trees beginning abeam DER, left and right of centerline, up to 100' AGL/369' MSL. Train 10' from DER, left and right of centerline, 23' AGL/112' MSL. Rising terrain beginning 5161' from DER, left and right of centerline, up to 269' MSL. Power lines beginning 7248' from DER, left and right of centerline, up to 125' AGL/374' MSL.

22 AUG 2013 to 19 SEP 2013

22 AUG 2013 to 19 SEP 2013



TAKEOFF MINIMUMS AND (OBSTACLE) DEPARTURE PROCEDURES





13234

FRIENDLY, MD

POTOMAC AIRFIELD (VKX)

ORIG-A 11097 (FAA)

TAKEOFF MINIMUMS: **Rwy 6**, 500-2½ or std. w/ min. climb of 290' per NM to 700. **Rwy 24**, 300-1.NOTE: **Rwy 6**, 50' AGL trees 300' left of DER. 75' AGL trees 320' right of DER. Tower 1.9 NM from DER, on centerline 301' AGL/550' MSL. **Rwy 24**, 80' AGL trees 200' right of DER. 75' AGL trees 200' left of DER. 30' AGL hanger 200' from DER, 190' right of centerline.**FRONT ROYAL, VA**

FRONT ROYAL-WARREN COUNTY (FRR)

AMDT 1 10210 (FAA)

TAKEOFF MINIMUMS: **Rwy 10**, 300-1¼ or std. w/ min. climb of 415' per NM to 1100. **Rwy 28**, NA-obstacles.DEPARTURE PROCEDURE: **Rwy 10**, climbing left turn direct MRB VORTAC before proceeding on course.NOTE: **Rwy 10**, vehicles on roadway beginning 221' from DER, left and right of centerline, up to 17' AGL/736' MSL. Power lines beginning 835' from DER, left and right of centerline, up to 79' AGL/828' MSL. Trees beginning 1060' from DER, 51' left of centerline, up to 100' AGL/779' MSL. Trees beginning 1660' from DER, 550' right of centerline, up to 100' AGL/939' MSL.**GAITHERSBURG, MD**

MONTGOMERY COUNTY AIRPARK (GAI)

ORIG 00279 (FAA)

NOTE: **Rwy 14**, 62' AGL trees 197' right of centerline. **Rwy 32**, 63' AGL trees 335' left of centerline.**GALAX-HILLSVILLE, VA**

TWIN COUNTY (HLX)

AMDT 3 12152 (FAA)

TAKEOFF MINIMUMS: **Rwy 1**, 300-1 or std. w/ min. climb of 310' per NM to 2900.DEPARTURE PROCEDURE: **Rwy 19**, climb heading 187° to 3300 before turning left.NOTE: **Rwy 1**, vehicles on roadway beginning 122' from DER, left and right of centerline, up to 15' AGL/2674' MSL. Tree 195' from DER, 432' right of centerline, 49' AGL/2669' MSL. Trees beginning 1215' from DER, left and right of centerline, up to 107' AGL/2699' MSL. Trees beginning 2098' from DER, left and right of centerline, up to 105' AGL/2768' MSL. Trees beginning 4071' from DER, 1192' left of centerline, up to 79' AGL/2799' MSL. **Rwy 19**, trees beginning 135' from DER, 455' left of centerline, up to 108' AGL/2748' MSL. Trees beginning 314' from DER, 434' right of centerline, up to 100' AGL/2760' MSL. Tree 925' from DER, 254' left of centerline, 80' AGL/2720' MSL. Trees beginning 1470' from DER, 248' right of centerline, up to 113' AGL/2753' MSL.**GEORGETOWN, DE**

SUSSEX COUNTY (GED)

AMDT 3 12096 (FAA)

NOTE: **Rwy 4**, trees abeam DER, 459' left of centerline, up to 74' AGL/118' MSL. Trees beginning 928' from DER, left and right of centerline, up to 89' AGL/131' MSL. **Rwy 22**, poles beginning 680' from DER, 417' left of centerline, up to 32' AGL/76' MSL. Trees 2662' from DER, 130' left of centerline, up to 77' AGL/122' MSL. Trees beginning 1088' from DER, 38' right of centerline, up to 99' AGL/143' MSL. **Rwy 10**, trees beginning 596' from DER, 525' left of centerline up to 100' AGL/142' MSL. Trees 1322' from DER, 225' right of centerline, up to 100' AGL/149' MSL. **Rwy 28**, aircraft on runway 414' from DER, 107' right of centerline, up to 27' AGL/ 73' MSL. Trees 1375' from DER, 119' right of centerline, up to 100' AGL/159' MSL. Trees 1793' from DER, 715' left of centerline, up to 100' AGL/149' MSL. Water tower 4498' from DER, 219' right of centerline, 134' AGL/181' MSL.**GORDONSVILLE, VA**

GORDONSVILLE MUNI (GVE)

ORIG 11349 (FAA)

TAKEOFF MINIMUMS: **Rwy 5**, 500-2½ or std. w/min. climb of 317' per NM to 1100. **Rwy 23**, 300-2½ or std. w/ min. climb of 384' per NM to 700.DEPARTURE PROCEDURE: **Rwy 5**, climb heading 048° to 1500 before proceeding on course. **Rwy 23**, climb heading 213° to 2000 before turning right.NOTE: **Rwy 5**, trees beginning 341' from DER, 529' right of centerline, up to 100' AGL/699' MSL. Vehicles on roadway 738' from DER, 477' left of centerline, up to 17' AGL/476' MSL. Trees beginning 789' from DER, 507' left of centerline, up to 100' AGL/939' MSL. Railroad 1111' from DER, 255' right of centerline, up to 23' AGL/482' MSL. **Rwy 23**, trees beginning 300' from DER, 199' right of centerline, up to 100' AGL/739' MSL. Trees beginning 805' from DER, 423' left of centerline, up to 100' AGL/739' MSL. Rising terrain beginning 2.9 NM from DER, 2.5 NM right of centerline, up to 2039' MSL.**HAGERSTOWN, MD**

HAGERSTOWN RGNL -RICHARD A. HENSON FIELD (HGR)

AMDT 5 88182 (FAA)

TAKEOFF MINIMUMS: **Rwy 2**, 300-1.DEPARTURE PROCEDURE: **Rwy 9**, climbing left turn to 2500 via 040° heading to intercept the HGR R-084 before departing as cleared. **Rwys 2, 20**, climb to 2000 before turning eastbound.**HOT SPRINGS, VA**

INGALLS FIELD (HSP)

AMDT 4 11013 (FAA)

DEPARTURE PROCEDURE: **Rwy 25**, climb heading 247° to 4400 before turning left.NOTE: **Rwy 7**, tree 52' from DER, 395' left of centerline, 64' AGL/3784' MSL. **Rwy 25**, trees, building, and terrain beginning 172' from DER, 167' left of centerline, up to 60' AGL/3860' MSL. Obstacle light on pipe 376' from DER, 421' left of centerline, up to 28' AGL/3828' MSL.

22 AUG 2013 to 19 SEP 2013

22 AUG 2013 to 19 SEP 2013

13234





TAKEOFF MINIMUMS AND (OBSTACLE) DEPARTURE PROCEDURES



INDIAN HEAD, MD

MARYLAND (W25)
AMDT1 07214 (FAA)

TAKEOFF MINIMUMS: **Rwy 36**, 300-1¼ or std. w/ min. climb of 360' per NM to 600.

NOTE: **Rwy 18**, trees abeam DER, 125' left of centerline, up to 100' AGL/256' MSL. Trees 269' from DER, on centerline, 100' AGL/256' MSL. Trees abeam DER, 125' right of centerline, up to 100' AGL/256' MSL. Tower 6170' from DER, 620' right of centerline, 190' AGL/384' MSL. **Rwy 36**, trees 258' from DER, 309' left of centerline, up to 100' AGL/271' MSL. Tree 567' from DER, 125' left of centerline, 60' AGL/230' MSL. Rising terrain beginning 73' from DER, 64' right of centerline, 180' MSL.

JOINT BASE ANDREWS (KADW)

CAMP SPRINGS, MD 12152

TAKEOFF OBSTACLES: **Rwy 1R**, terrain 41' from DER, 500' left of centerline, 279' MSL. Terrain 46' from DER, 512' left of centerline, 279' MSL. Stadium light 3036' from DER, 1020' right of centerline, 80' AGL/361' MSL. **Rwy 19L**, terrain 0' inward of DER, 450' left of centerline, 253' MSL. Terrain 110' from DER, 529' left of centerline, 255' MSL. Terrain 270' from DER, 581' left of centerline, 260' MSL. **Rwy 19R**, tower 4629' from DER, 1664' right of centerline, 108' AGL/372' MSL. Tower 4713' from DER, 1727' right of centerline, 131' AGL/390' MSL.

JONESVILLE, VA

LEE COUNTY (OVG)
ORIG 06327 (FAA)

TAKEOFF MINIMUMS: **Rwy 7**, std. w/ min. climb of 467' per NM to 3800, or 1900-3 for climb in visual conditions. **Rwy 25**, std. w/ min. climb of 442' per NM to 3500, or 1900-3 for climb in visual conditions.

DEPARTURE PROCEDURE: **Rwys 7, 25**, for climb in visual conditions cross Lee County Airport at or above 3200 before proceeding on course.

NOTE: **Rwy 7**, terrain 116' from DER, 72' right of centerline, 1439' MSL. Terrain 691' from DER, 53' right of centerline, 1459' MSL. Terrain 267' from DER, 190' left of centerline, 1439' MSL. Terrain 479' from DER, 68' left of centerline, 1459' MSL.

KENBRIDGE, VA

LUNENBURG COUNTY (W31)
ORIG 11013 (FAA)

NOTE: **Rwy 2**, trees beginning 219' from DER, left and right of centerline, up to 100' AGL/639' MSL. Vehicles on roadway, beginning 561' from DER, 519' right of centerline, up to 15' AGL/544' MSL. **Rwy 20**, trees at DER, left and right of centerline, up to 100' AGL/599' MSL.

LANGLEY AFB (KLFJ),

HAMPTON, VA ORIG, 13234
Rwy 8, 600-3*

* Or standard with minimum climb of 256 ft/NM to 800. TAKE-OFF OBSTACLES: **Rwy 8**, Boat 2257' from DER, 777' left of centerline, 60' AGL/60' MSL. Boat 2497' from DER, 57' left of centerline, 60' AGL/ 60' MSL. Vehicle on road 1048' from DER, 703' right of centerline, 15' AGL/23' MSL. Boat 1807' from DER, 552' right of centerline, 60' AGL/60' MSL. Boat 2837' from DER, 643' right of centerline, 60' AGL/60' MSL. **Rwy 26**, Terrain 0' from DER, 369' left of centerline, 11' MSL. Tree 4052' from DER, 688' left of centerline, 100' AGL/116' MSL. Tree 4842' from DER, 690' left of centerline, 100' AGL/ 116' MSL. Tree 4093' from DER, 82' left of centerline, 99' AGL/111' MSL. Tree 4155' from DER, 339' right of centerline, 100' AGL/113' MSL. Tree 4039' from DER, 620' right of centerline, 100' AGL/ 109' MSL. Tree 3807' from DER, 1181' right of centerline, 100' AGL/113' MSL. Building 1390' from DER, 825' left of centerline, 24' AGL/36' MSL.

LAUREL, DE

LAUREL (N06)
AMDT 2 12096 (FAA)

TAKEOFF MINIMUMS: **Rwy 15**, 600-2¼ or std. w/min. climb of 286' per NM to 800.

DEPARTURE PROCEDURE: **Rwy 15**, climb heading 148° to 1200 before proceeding on course. **Rwy 33**, climb heading 328° to 1200 before proceeding on course.

NOTE: **Rwy 15**, tower 2.4 NM from DER, 253' left of centerline, 500' AGL/542' MSL.

LAWRENCEVILLE, VA

LAWRENCEVILLE/BRUNSWICK MUNI (LVL)
ORIG 04330 (FAA)

TAKEOFF MINIMUMS: **Rwys 6,24**, NA.

NOTE: **Rwy 18**, trees 1654' from DER, 772' left of centerline, 88' AGL/407' MSL. Trees 200' from DER, on centerline, 22' AGL/321' MSL. **Rwy 36**, trees 1487' from DER, 20' left of centerline, 88' AGL/420' MSL. Trees 113' from DER, 372' right of centerline, 88' AGL/420' MSL.

LEESBURG, VA

LEESBURG EXECUTIVE (JYO)
AMDT 2 10266 (FAA)

DEPARTURE PROCEDURE: **Rwy 35**, climb heading 351° to 1200 before proceeding on course.

NOTE: **Rwy 17**, vehicle on roadway, 320' from DER, 565' left of centerline, up to 15' AGL/414' MSL. Building 167' from DER, 360' left of centerline, 22' AGL/401' MSL. Pole 958' from DER, 373' left of centerline, 32' AGL/421' MSL. Trees beginning 138' from DER, left and right of centerline, up to 100' AGL/464' MSL. **Rwy 35**, terrain 96' from DER, 453' left of centerline, 381' MSL. Tree 1078' from DER, 525' left of centerline, up to 100' AGL/413' MSL. Pole 638' from DER, 642' right of centerline, 49' AGL/428' MSL.

22 AUG 2013 to 19 SEP 2013

22 AUG 2013 to 19 SEP 2013





TAKEOFF MINIMUMS AND (OBSTACLE) DEPARTURE PROCEDURES



13234

LEONARDTOWN, MD

ST. MARY'S COUNTY RGNL (2W6)

ORIG 07018 (FAA)

NOTE: **Rwy 11**, multiple trees beginning 88' from DER, 339' left of centerline, up to 80' AGL/205' MSL.

Multiple trees beginning 61' from DER, 193' right of centerline up to 80' AGL/205' MSL. **Rwy 29**, multiple trees beginning 996' from DER, 227' left of centerline up to 79' AGL/221' MSL. Multiple trees beginning 596' from DER, 277' right of centerline up to 71' AGL/213' MSL. Multiple towers on buildings beginning 53' from DER, 400' right of centerline up to 26' AGL/168' MSL. Equipment on building 223' from DER, 449' right of centerline, 15' AGL/169' MSL. Tower 402' from DER, 399' right of centerline, 33' AGL/175' MSL. Fence 496' from DER, 241' right of centerline, 22' AGL/164' MSL.

LOUISA, VA

LOUISA COUNTY/FREEMAN FIELD (LKU)

AMDT 1 10210 (FAA)

NOTE: **Rwy 9**, trees beginning abeam DER, 316' right of centerline, up to 100' AGL/589' MSL. Trees beginning 765' from DER, 644' left of centerline, up to 95' AGL/545' MSL. Trees beginning 889' from DER, 150' right of centerline, up to 59' AGL/519' MSL. **Rwy 27**, trees beginning abeam DER, 350' right of centerline, up to 100' AGL/569' MSL. Trees beginning 212' from DER, 133' right of centerline, up to 100' AGL/569' MSL. Trees beginning 70' from DER, 513' left of centerline, up to 100' AGL/569' MSL. Building 148' from DER, 440' left of centerline, 14' AGL/484' MSL. Trees beginning 587' from DER, left and right of centerline, up to 100' AGL/549' MSL.

LURAY, VA

LURAY CAVERNS (LUA)

AMDT 1 84019 (FAA)

TAKEOFF MINIMUMS: **Rwys 4, 22**, 1000-3

DEPARTURE PROCEDURE: Climb visually so as to cross airport at or above 2000, then continue climb to 5000 via LUA 215° bearing before proceeding on course.

LYNCHBURG, VA

FALWELL (W24)

AMDT 1 07186 (FAA)

TAKEOFF MINIMUMS: **Rwy 10**, 1100-2½ for climb in visual conditions. **Rwy 28**, NA-obstacle.

DEPARTURE PROCEDURE: **Rwy 10**, for climb in visual conditions: cross Falwell Airport at or above 1900 before proceeding on course.

NOTE: **Rwy 10**, multiple trees 9' from DER, 87' right of centerline, up to 100' AGL/899' MSL. Multiple power lines 2896' from DER, 1192' right of centerline, up to 149' AGL/968' MSL.

LYNCHBURG RGNL/PRESTON GLENN FIELD (LYH)

AMDT 8 08073 (FAA)

TAKEOFF MINIMUMS: **Rwy 17**, 300-2¼ or std. w/ min. climb of 232' per NM to 1500. **Rwy 35**, std. w/ min. climb of 350' per NM to 3000, or 1700-3 for climb in visual conditions.

DEPARTURE PROCEDURE: **Rwy 4**, climb heading 036° to 2200 before proceeding on course. **Rwy 17**, climb heading 169° to 1800 before turning right. **Rwy 22**, climb heading 216° to 1800 before turning right. **Rwy 35**, climb heading 349° to 3000 before turning left, or for climb in visual conditions: cross Lynchburg Rgnl/Preston Glenn Field at or above 2500' MSL before proceeding on course.

NOTE: **Rwy 4**, trees beginning 2029' from DER, 62' right of centerline up to 81' AGL/999' MSL. Trees beginning 1422' from DER, 3' left of centerline up to 76' AGL/995' MSL. Poles beginning 427' from DER, 483' right of centerline up to 44' AGL/1044' MSL. Obstruction lights on fence beginning 2' from DER, 500' right of centerline up to 30' AGL/ 948' MSL. Antenna on building 395' from DER, 277' right of centerline 15' AGL/954' MSL. Light 606' from DER, 599' right of centerline, 18' AGL/982' MSL. Building 400' from DER, 345' right of centerline, 12' AGL/951' MSL. **Rwy 17**, trees beginning 284' from DER, 77' left of centerline up to 277' AGL/1195' MSL. Trees beginning 265' from DER, 178' right of centerline up to 57' AGL/969' MSL. Obstruction light on pole 9326' from DER 333' left of centerline, 270' AGL/1188 MSL. **Rwy 22**, trees beginning 274' from DER, 245' right of centerline up to 41' AGL/979' MSL. Trees beginning 2616' from DER, 206' left of centerline up to 41' AGL/ 979' MSL. Poles beginning 2872' from DER, 603' right of centerline up to 44' AGL/982' MSL. **Rwy 35**, trees beginning 2955' from DER, 140' right of centerline up to 96' AGL/ 1014' MSL. Trees beginning 722' from DER, 71' left of centerline up to 119' AGL/1037' MSL. Pole 36' from DER 98' left of centerline, 25' AGL/ 943' MSL.

22 AUG 2013 to 19 SEP 2013

22 AUG 2013 to 19 SEP 2013

13234



TAKEOFF MINIMUMS AND (OBSTACLE) DEPARTURE PROCEDURES





MARION/WYTHEVILLE, VA

MOUNTAIN EMPIRE (MKJ)

AMDT 2 12208

TAKEOFF MINIMUMS: **Rwy 8**, 300-1¾. **Rwy 26**, std. w/min. climb of 265' per NM to 3400 or 4600-3 for climb in visual conditions.

DEPARTURE PROCEDURE: **Rwy 8**, climb heading 079° to 4100 before proceeding on course. **Rwy 26**, climb heading 259° to 4400 before proceeding on course or for climb in visual conditions: cross Mountain Empire airport at or above 4600' MSL before proceeding on course. When executing VCOA, notify ATC prior to departure.

NOTE: **Rwy 8**, trees beginning 58' from DER, left and right of centerline, up to 100' AGL/2819' MSL. Vehicles beginning 225' from DER, left and right of centerline, up to 17' AGL/2540' MSL. Poles beginning 703' from DER, left and right of centerline, up to 123' AGL/2537' MSL. **Rwy 26**, trees and vehicles beginning 250' from DER, left and right of centerline, up to 100' AGL/3039' MSL.

MARTINSVILLE, VA

BLUE RIDGE (MTV)

AMDT 3 10042 (FAA)

TAKEOFF MINIMUMS: **Rwy 12**, std. with a min. climb of 249' per NM to 2100 or 1900-3 for climb in visual conditions. **Rwy 30**, std. with a min. climb of 321' per NM to 4300 or 1900-3 for climb in visual conditions.

DEPARTURE PROCEDURE: **Rwy 12**, climb heading 125° to 2200 before proceeding on course. For climb in visual conditions: cross Blue Ridge airport at or above 2700 MSL before proceeding on course. **Rwy 30**, for climb in visual conditions: cross Blue Ridge airport at or above 2700 MSL before proceeding on course.

NOTE: **Rwy 12**, trees beginning 316' from DER, 320' left of centerline, up to 47' AGL/956' MSL. Trees beginning 38' from DER, 380' right of centerline, 82' AGL/941' MSL. **Rwy 30**, trees beginning 82' from DER, 9' right of centerline, up to 100' AGL/1058' MSL. Vehicle on road 638' from DER, 418' right of centerline, 15' AGL/974' MSL. Obstruction light on DME 1031' from DER, 304' right of centerline, 18' AGL/977' MSL. Fence 947' from DER, 400' right of centerline, 12' AGL/971' MSL. Trees beginning 102' from DER, 94' left of centerline, up to 77' AGL/1047' MSL.

MELFA, VA

ACCOMACK COUNTY (MFV)

AMDT1 07298 (FAA)

NOTE: **Rwy 3**, multiple trees beginning 41' from DER, 221' right of centerline, up to 84' AGL/128' MSL. Truck on road 204' from DER, 231' left of centerline, 15' AGL/61' MSL. Multiple trees beginning 249' from DER, 14' left of centerline, up to 106' AGL/155' MSL. Truck on road 494' from DER, 228' left of centerline, 15' AGL/62' MSL. Rod on obstruction light tower 862' from DER, 402' left of centerline, 55' AGL/99' MSL. **Rwy 21**, multiple trees beginning 27' from DER, 395' right of centerline, up to 91' AGL/135' MSL. Multiple trees 504' from DER, 403' left of centerline, up to 110' AGL/144' MSL.

MIDDLETON, DE

SUMMIT (EYV)

AMDT 2 00027 (FAA)

TAKEOFF MINIMUMS: **Rwy 35**, 300-1, or std. with a min. climb of 280' per NM to 400.

MITCHELLVILLE, MD

FREEWAY (W00)

AMDT 2 12320 (FAA)

TAKEOFF MINIMUMS: **Rwy 18**, 300-1 or std.w/min. climb of 380' per NM to 400. **Rwy 36**, 300-2 or std. w/ min. climb of 725' per NM to 600.

NOTE: **Rwy 18**, trees beginning 138' from DER, 30' left of centerline, up to 100' AGL/299' MSL. Trees beginning 220' from DER, 119' right of centerline, up to 100' AGL/279' MSL. Trees 3468' from DER, 1125' left of centerline, up to 100' AGL/319' MSL. Tower 3699' from DER, 1126' left of centerline, 125' AGL/305' MSL. **Rwy 36**, vehicles on road, trees, and transmission line towers beginning 107' from DER, 40' left of centerline, up to 100' AGL/299' MSL. Vehicles on road, trees, and transmission line towers beginning 112' from DER, 39' right of centerline, up to 100' AGL/319' MSL. Transmission line tower 2610' from DER, 3' left of centerline, 133' AGL/332' MSL.

MONETA, VA

SMITH MOUNTAIN LAKE (W91)

TAKEOFF MINIMUMS: **Rwys 5, 23**, 300-1.

DEPARTURE PROCEDURE: **Rwys 5, 23**, climb straight ahead to 1600 before proceeding on course.

NEWPORT NEWS, VA

NEWPORT NEWS/WILLIAMSBURG INTL (PHF)

TAKEOFF MINIMUMS: **Rwy 20**, 300-1¼ or standard with a minimum climb of 255' per NM to 300.

NOTE: **Rwy 2**, bush 295' from DER, 291' right of centerline 22' AGL/62' MSL. Tree 937' from DER, 603' left of centerline 81' AGL/131' MSL. Pole 1221' from DER, 487' right of centerline 31' AGL/81' MSL. Tree 1275' from DER, 517' left of centerline 79' AGL/132' MSL. Multiple trees beginning 1554' from DER, 298' left of centerline up to 88' AGL/141' MSL. Tree 1686' from DER, 428' right of centerline 61' AGL/114' MSL. Tree 1849' from DER, 598' right of centerline 72' AGL/125' MSL. T-L tower 3351' from DER, 1008' left of centerline 109' AGL/161 MSL. **Rwy 7**, tree 371' from DER, 588' left of centerline 36' AGL/73' MSL. T-L tower 4120' from DER, 1324' right of centerline 93' AGL/116' MSL. T-L tower 5625' from DER, 1345' left of centerline 133' AGL/191' MSL. **Rwy 20**, bush 96' from DER, 293' left of centerline 22' AGL/52' MSL. Stack 5977' from DER, 598' left of centerline 186' AGL/227' MSL. **Rwy 25**, tree 694' from DER, 549' right of centerline 42' AGL/65' MSL. Tree 1020' from DER, 703' right of centerline 23' AGL/97' MSL. Tree 1622' from DER, 529' left of centerline 59' AGL/79' MSL. Tree 2654' from DER, 335' right of centerline 86' AGL/106' MSL. Tree 3435 from DER, 1125' right of centerline 116' AGL/139' MSL.

22 AUG 2013 to 19 SEP 2013

22 AUG 2013 to 19 SEP 2013





TAKEOFF MINIMUMS AND (OBSTACLE) DEPARTURE PROCEDURES



13234

NEW MARKET, VA

NEW MARKET (8W2)

ORIG 12152 (FAA)

TAKEOFF MINIMUMS: **Rwy 6**, 1100-3 w/ min. climb of 376' per NM to 3700 or 2600-3 for climb in visual conditions. **Rwy 24**, 1100-3 w/ min. climb of 290' per NM to 3700 or 2600-3 for climb in visual conditions.

DEPARTURE PROCEDURE: **Rwy 6**, climb heading 048° to 3700 before proceeding on course or for climb in visual conditions: cross New Market airport at or above 3400 MSL before proceeding on course. When executing VCOA, notify ATC prior to departure.

Rwy 24, climb heading 243° to 3700 before proceeding on course or for climb in visual conditions: cross New Market airport at or above 3400 MSL before proceeding on course. When executing VCOA, notify ATC prior to departure.

NOTE: **Rwy 6**, train beginning 2' from DER, 396' left of centerline, up to 23' AGL/1002' MSL. Vehicles on road beginning 57' from DER, left and right of centerline, up to 15' AGL/994' MSL. Trees beginning 754' from DER, 522' left of centerline, up to 100' AGL/1279' MSL. **Rwy 24**, train beginning 11' from DER, 404' right of centerline, up to 23' AGL/1002' MSL. Trees beginning 564' from DER, 257' right of centerline, up to 100' AGL/1319' MSL.

NORFOLK, VA (CON'T)

NORFOLK INTL (CON'T)

ORIG 07018 (FAA)

NOTES: **Rwy 5**, mobile crane 4091' from DER, 1249' right of centerline, 150' AGL/163' MSL. Multiple ship masts beginning 2761' from DER, 22' right of centerline, up to 100' AGL/100' MSL. Multiple ship masts beginning 2564' from DER, 133' left of centerline, up to 100' AGL/100' MSL. Obstruction light on pole 3978' from DER, 931' left of centerline, 138' AGL/146' MSL. Multiple towers beginning 4045' from DER, 982' left of centerline, up to 138' AGL/146' MSL. Obstruction light on pole 2898' from DER, 811' right of centerline, 84' AGL/98' MSL. Antenna 4115' from DER, 1585' right of centerline, 117' AGL/131' MSL. Tower 2974' from DER, 772' right of centerline, 90' AGL/98' MSL, obstruction light on pole 2696' from DER, 1063' left of centerline, 84' AGL/91' MSL. Bush 29' from DER, 307' right of centerline, 6' AGL/20' MSL. Tree 1459' from DER, 159' left of centerline, 41' AGL/55' MSL. Tower 2938' from DER, 1254' left of centerline, 89' AGL/94' MSL. Tree 1399' from DER, 201' right of centerline, 38' AGL/52' MSL. Sign 82' from DER, 301' left of centerline, 2' AGL/19' MSL. Terrain 23' from DER, 227' left of centerline, 0' AGL/17' MSL. **Rwy 14**, tree 2541' from DER, 432' right of centerline, 101' AGL/121' MSL. Multiple trees beginning 443' from DER, 398' left of centerline, up to 75' AGL/95' MSL. Pole 1410' from DER, 254' right of centerline, 45' AGL/62' MSL. **Rwy 23**, rod on obstruction light pole 1012' from DER, 650' right of centerline, 56' AGL/73' MSL. Multiple trees beginning 619' from DER, 584' left of centerline, up to 81' AGL/98' MSL. Obstruction light on pole 1433' from DER, 738' left of centerline, 54' AGL/71' MSL. Multiple trees beginning 323' from DER, 504' right of centerline, up to 26' AGL/43' MSL. Pole 2165' from DER, 840' right of centerline, 57' AGL/74' MSL. **Rwy 32**, multiple trees beginning 17' from DER, 460' right of centerline, up to 81' AGL/98' MSL. Multiple trees and poles beginning 60' from DER, 333' left of centerline, up to 87' AGL/92' MSL. Road 207' from DER, 231' right of centerline, 12' AGL/29' MSL. Multiple obstruction lights on towers 201' from DER, 135' left of centerline, up to 12' AGL/27' MSL.

NORFOLK, VA

CHESAPEAKE RGNL (CPK)

AMDT 3 12040 (FAA)

NOTE: **Rwy 5**, trees beginning 143' from DER, left and right of centerline, up to 100' AGL/108' MSL. **Rwy 23**, trees beginning 153' from DER, left and right of centerline, up to 105' AGL/122' MSL.

HAMPTON ROADS EXECUTIVE (PVG)

TAKEOFF MINIMUMS: **Rwy 10**, std. w/ min. climb of 217' per NM to 700, or alternatively w/ std. takeoff minimums and a normal 200' per NM climb gradient, takeoff must occur no later than 2100' prior to DER or 1700-2½ for climb in visual conditions.

DEPARTURE PROCEDURE: **Rwy 2**, climb heading 019° to 1600 before turning west. **Rwy 10**, climb heading 102° to 900 before proceeding on course, or for climb in visual conditions, cross Hampton Roads Executive Airport at or above 1600 before proceeding on course. **Rwy 20**, climb heading 199° to 1000 before turning North. **Rwy 28**, climb heading 282° to 1500 before turning North.

NOTE: **Rwy 2**, multiple trees beginning 693' from DER, 286' left of centerline, up to 100' AGL/124' MSL.

Multiple trees beginning 917' from DER, 422' right of centerline, up to 100' AGL/124' MSL. **Rwy 10**, trees 688' from DER, 374' left of centerline, 61' AGL/85' MSL. Vehicle on road and multiple trees beginning 750' from DER, 359' right of centerline, up to 100' AGL/124' MSL. Tower 1.1 NM from DER, 1424' left of centerline, 175' AGL/192' MSL. **Rwy 20**, vehicle on road and multiple trees beginning 199' from DER, 250' left of centerline, up to 100' AGL/124' MSL. Vehicle on road and multiple trees beginning 595' from DER, 8' right of centerline, up to 100' AGL/124' MSL. **Rwy 28**, multiple trees beginning 2711' from DER, 366' left of centerline, up to 100' AGL/124' MSL. Vehicle on road 3' from DER, 112' right of centerline, 17' AGL/34' MSL. Multiple trees beginning 2595' from DER, 362' right of centerline, up to 100' AGL/124' MSL.

NORFOLK NS (CHAMBERS FIELD)(KNGU)

NORFOLK, VA AMDT 1, 13178

TAKE-OFF OBSTACLES: **Rwy 10**: Trees with a maximum height of 100' within 1500' of departure end of rwy. Cross departure end of rwy at or above 35' AGL/48' MSL. **Rwy 28**: Four stadium lights 2327' to 2588' from DER, 742' to 849' left of centerline, 74' AGL/73' MSL.

OAKLAND, MD

GARRETT COUNTY (2G4)

ORIG 08101 (FAA)

NOTE: **Rwy 9**, Multiple trees beginning 75' from DER, 94' left of centerline, up to 100' AGL/2939' MSL. Multiple trees beginning 76' from DER, 47' right of centerline, up to 100' AGL/2939' MSL. **Rwy 27**, Multiple trees beginning 15' from DER, 334' left of centerline, up to 100' AGL/3019' MSL. Multiple trees beginning 19' from DER, 107' right of centerline, up to 100' AGL/3019' MSL.

OCEAN CITY, MD

OCEAN CITY MUNI (OXB)

TAKEOFF MINIMUMS: **Rwys 2, 32**, 400-2 or std. with a min. climb of 260' per NM to 500.

22 AUG 2013 to 19 SEP 2013

22 AUG 2013 to 19 SEP 2013

13234



TAKEOFF MINIMUMS AND (OBSTACLE) DEPARTURE PROCEDURES





TAKEOFF MINIMUMS AND (OBSTACLE) DEPARTURE PROCEDURES



13234

OCEANA NAS (APOLLO SOUCEK FIELD) (KNTU)

VIRGINIA BEACH, VA. 09351
TAKEOFF OBSTACLES: Rwy 5L, Trees 115' MSL, 3706' from DER, 97' right of centerline. Rwy 5R, Trees 115' MSL, 3706' from DER, 603' left of centerline. Rwy 14L, Trees 105' MSL, 2792' from DER, 7' left of centerline. Rwy 14R, Trees 105' MSL, 2792' from DER, 708' left of centerline.

ORANGE, VA
ORANGE COUNTY (OMH)
ORIG 80094 (FAA)

TAKEOFF MINIMUMS: Rwy 8, 300-1.
DEPARTURE PROCEDURE: Rwy 8, 26, climb runway heading to 1500 before turning.

PATUXENT RIVER NAS (TRAPNELL FIELD), (KNHK)

PATUXENT RIVER, MD 09267
Rwy 6, Obstacle identification surface begins 15' above DER. Rwy 14, Obstacle identification surface begins 35' above DER. Rwy 20, Obstacle identification surface begins 20' above DER. Rwy 24, Obstacle identification surface begins 15' above DER.

TAKEOFF OBSTACLES: Rwy 6, Pole 63' AGL/83' MSL, 1967' from DER, 981' left of centerline. Rwy 14, Trees 42' AGL/57' MSL, 190' from DER, 223' left of centerline. Two lane road crossing rwy thld max ht 17' AGL/33' MSL, 193' from DER. Pole 34' AGL/50' MSL, 315' from DER, 198' left of centerline. Trees 43' AGL/59' MSL, 520' from DER, 637' right of centerline. Rwy 20, Trees 44' AGL/81' MSL, 1555' from DER, 845' right of centerline. Trees 56' AGL/93' MSL, 2057' from DER, 778' right of centerline. Trees 67' AGL/104' MSL, 2077' from DER, 818' right of centerline. Trees 93' AGL/130' MSL, 3029' from DER, 32' left of centerline. Rwy 24, 43' AGL/81' MSL, 1682' from DER, 582' left of centerline. Trees 57' AGL/93' MSL, 2015' from DER, 965' left of centerline. Trees 66' AGL/104' MSL, 2056' from DER, 948' left of centerline.

PETERSBURG, VA
DINWIDDIE COUNTY (PTB)
ORIG 07354 (FAA)

TAKEOFF MINIMUMS: Rwys 32, 14, NA-obstacles.
NOTE: Rwy 5, numerous trees beginning 911' from DER, 551' left of centerline, up to 65' AGL/254' MSL. Fence 161' from DER, 472' right of centerline, 7' AGL/196' MSL. Tree 1031' from DER, 690' right of centerline, 57' AGL/256' MSL. Rwy 23, numerous trees beginning 2615' from DER, 69' right of centerline, up to 80' AGL/289' MSL. Fence 10' from DER, 476' left of centerline, 10' AGL/199' MSL. Numerous trees beginning 819' from DER, 528' left of centerline, up to 72' AGL/281' MSL.

PHILLIPS AAF (KAPG)
ABERDEEN PROVING GROUND, MD . . . 07270

TAKEOFF OBSTACLES: Rwy 4, vehicle on road 1059' from DER, on centerline, 10' AGL/86' MSL. Tree 1126' from DER, 118' left of centerline, 29' AGL/88' MSL. Rwy 22, vehicle on road 234' from DER, 27' right of centerline, 10' AGL/49' MSL. Multiple trees beginning 398' from DER, 311' right of centerline, up to 50' AGL/89' MSL. Tree 1094' from DER, 49' left of centerline, 43' AGL/62' MSL.

QUANTICO MCAF (TURNER FIELD) (KNYG)

QUANTICO, VA. 11069

Rwy 2, Diverse departures authorized only from 090°CW to 204°, 400-2½*

Rwy 20, 300-1**

* Or standard with minimum civil climb of 440 ft/NM to 600, minimum military climb of 410 ft/NM to 500.

** Or standard with minimum civil climb of 400 ft/NM to 600, minimum military climb of 270 ft/NM to 500.

TAKEOFF OBSTACLES: Rwy 2, Multiple trees on rising terrain 100' AGL/296' MSL, 4075' from DER, 803' left of centerline. Multiple trees on rising terrain 100' AGL/197' MSL, 5763' from DER, 106' left of centerline. Multiple trees 100' AGL/240' MSL, 5763' from DER, 509' right of centerline. Smokestack 100' MSL, 2310' from DER, 401' left of centerline. Multiple smokestacks up to 397' MSL, 2 NM from DER, 4175' right of centerline. Rwy 20, Terrain 27' MSL, starting 347' from DER, 192' right of centerline. Multiple trees on rising terrain 25' AGL/175' MSL, 5364' from DER, 1900' right of centerline. Multiple trees on rising terrain 25' AGL/195' MSL, 5590' from DER, 1980' right of centerline. Multiple trees on rising terrain 25' AGL/205' MSL, 5880' from DER, 1855' right of centerline.

QUINTON, VA
NEW KENT COUNTY (W96)
AMDT 1 10154 (FAA)

NOTE: Rwy 11, trees beginning at DER, left and right of centerline, up to 100' AGL/239' MSL. Rwy 29, trees beginning at DER, left and right of centerline, up to 100' AGL/239' MSL.

RICHLANDS, VA
TAZEWELL COUNTY (JFZ)
AMDT 1 11349 (FAA)

TAKEOFF MINIMUMS: Rwy 7, std. w/min. climb of 630' per NM to 3200 or 300-1½ w/ min. climb of 235' per NM to 5000 or 2000-2½ for climb in visual conditions. Rwy 25, std. w/min. climb of 713' per NM to 2900 or 300-1 w/ min. climb of 220' per NM to 5000 or 2000-2 ½ for climb in visual conditions.

DEPARTURE PROCEDURE: Rwy 7, climb heading 072° to 5000 before proceeding on course, or for climb in visual conditions: cross Tazewell County airport at or above 4500 before proceeding on course. When executing VCOA, notify ATC prior to departure. Rwy 25, climb heading 252° to 5000 before proceeding on course or for climb in visual conditions: cross Tazewell County airport at or above 4500 before proceeding on course. When executing VCOA, notify ATC prior to departure.

NOTE: Rwy 7, rising terrain beginning at DER, left and right of centerline, up to 2773' MSL. Vehicles on road beginning at DER, 425' right of centerline, up to 15' AGL/2682' MSL. Trees beginning at DER, left and right of centerline, up to 100' AGL/2939' MSL. Rwy 25, trees beginning 116' from DER, left and right of centerline, up to 100' AGL/2828' MSL. DME facility 176' from DER, 256' left of centerline, 28' AGL/2668' MSL. Fence beginning 566' from DER, 363' left of centerline, up to 10' AGL/2734' MSL. Rising terrain beginning 620' from DER, 361' left of centerline, up to 2669' MSL.

22 AUG 2013 to 19 SEP 2013

22 AUG 2013 to 19 SEP 2013

13234



TAKEOFF MINIMUMS AND (OBSTACLE) DEPARTURE PROCEDURES





TAKEOFF MINIMUMS AND (OBSTACLE) DEPARTURE PROCEDURES



13234

RICHMOND, VA

RICHMOND EXECUTIVE-CHESTERFIELD COUNTY (FCI)

AMDT 4 13122 (FAA)

DEPARTURE PROCEDURE: **Rwy 33**, climb heading 316° to 2000 before turning right.NOTE: **Rwy 15**, vehicles on roadway and trees beginning abeam DER, 260' right of centerline, up to 59' AGL/260' MSL. Trees beginning 99' from DER, 266' left of centerline, up to 57' AGL/258' MSL. **Rwy 33**, rising terrain, trees and pole beginning 62' from DER, 29' right of centerline, up to 37' AGL/278' MSL. Trees beginning 1844' from DER, 660' left of centerline, up to 95' AGL/306' MSL.**RICHMOND INTL (RIC)**

AMDT 1 10098 (FAA)

TAKEOFF MINIMUMS: **Rwy 2**, 200-1¼ or std. w/ min. climb of 230' per NM to 400, or alternatively, with standard TAKEOFF minimums and a normal 200'/NM climb gradient, TAKEOFF must occur no later than 1600' prior to DER.NOTE: **Rwy 2**, aircraft on surface beginning 3' from DER, 202' right of centerline, up to 65' AGL/232' MSL. Trees and bushes beginning 104' from DER, 223' left of centerline, up to 100' AGL/251' MSL. Trees beginning 2918' from DER, 367' right of centerline, up to 100' AGL/260' MSL. **Rwy 7**, trees beginning 1208' from DER, 798' right of centerline, up to 100' AGL/259' MSL. Trees beginning 1347' from DER, 283' left of centerline, up to 100' AGL/259' MSL. **Rwy 20**, hangar 817' from DER, 665' right of centerline, 43' AGL/212' MSL. Trees beginning 2307' from DER, 1065' left of centerline, up to 100' AGL/235' MSL. Trees beginning 2645' from DER 759' right of centerline, up to 100' AGL/255' MSL. Pole 3226' from DER, 424' right of centerline, 79' AGL/248' MSL. **Rwy 25**, vehicles on road beginning 390' from DER, on centerline, up to 15' AGL/184' MSL. Train on railroad beginning 545' from DER, on centerline, up to 23' AGL/192' MSL. Tower 799' from DER, 562' left of centerline, 16' AGL/185' MSL. Trees beginning 2414' from DER, 285' right of centerline, up to 100' AGL/279' MSL. Multiple poles beginning 3056' from DER, 565' left of centerline, up to 83' AGL/252' MSL. Trees beginning 3176' from DER, 357' left of centerline, up to 100' AGL/269' MSL. **Rwy 34**, aircraft on surface beginning 12' from DER, 192' left of centerline, up to 65' AGL/230' MSL. Hangar and light pole beginning 1103' from DER, 732' left of centerline, up to 41' AGL/200' MSL. Trees beginning 2202' from DER, 1052' right of centerline, up to 100' AGL/232' MSL. Trees beginning 2689' from DER, 998' left of centerline, up to 100' AGL/237' MSL.**RICHMOND/ASHLAND, VA**

HANOVER COUNTY MUNI (OFF)

ORIG 09239 (FAA)

NOTE: **Rwy 16**, trees beginning 48' from DER, 479' left of centerline, up to 101' AGL/291' MSL. Poles beginning 1077' from DER, 36' left of centerline, up to 36' AGL/236' MSL. Pole 1120' from DER 166' right of centerline 30' AGL/230' MSL. Trees beginning 1307' from DER, 26' left of centerline, up to 108' AGL/298' MSL. Trees beginning 1431' from DER, 319' right of centerline, up to 104' AGL/294' MSL. **Rwy 34**, road and trees beginning 149' from DER, 345' right of centerline, up to 47' AGL/247' MSL. Road and trees beginning 410' from DER, 386' left of centerline, up to 103' AGL/293' MSL. Poles beginning 660' from DER, on centerline, up to 39' AGL/239' MSL. Trees beginning 1402' from DER, 445' right of centerline, up to 100' AGL/290' MSL. Trees beginning 2714' from DER, 487' right of centerline, up to 104' AGL/304' MSL.**RIDGELY, MD**

RIDGELY AIRPARK (RJD)

NOTE: **Rwy 12**, multiple trees beginning 592' from DER, 6' left of centerline, up to 100' AGL/160' MSL. Multiple trees beginning 239' from DER, 338' right of centerline, up to 100' AGL/160' MSL.**ROANOKE, VA**

ROANOKE RGNL/ WOODRUM FIELD (ROA)

AMDT 10 13122 (FAA)

TAKEOFF MINIMUMS: **Rwy 6**, std. w/ min. climb of 585' per NM to 3000, or 2500-3 for climb in visual conditions. **Rwy 16**, std. w/ min. climb of 420' per NM to 3000, or 2500-3 for climb in visual conditions. **Rwy 24**, std. w/ min. climb of 242' per NM to 2800, or 2500-3 for climb in visual conditions. **Rwy 34**, NA-Obstacles.DEPARTURE PROCEDURE: **Rwy 6**, climb heading 058° to 3000 before proceeding on course. **Rwy 16**, climb heading 156° to 3000 before proceeding on course. **Rwy 24**, climb on I-SZK LDA localizer west course to 4200 to DIXXY INT'L/SZK 15.25 DME before proceeding on course. **Rwys 6, 16, 24**, for climb in visual conditions, cross Roanoke Rgnl / Woodrum field at or above 3500 before proceeding on course. When executing VCOA, notify ATC prior to departure.NOTE: **Rwy 6**, trees beginning 82' from DER, 448' left of centerline, up to 100' AGL/1179' MSL. Trees and bushes beginning 87' from DER, 339' right of centerline, up to 100' AGL/1199' MSL. Trees beginning 2.6 NM from DER, 2152' left of centerline, up to 100' AGL/2339' MSL. Towers beginning 2.89 NM from DER, 3454' left of centerline, up to 207' AGL/2407' MSL. **Rwy 16**, sign 39' from DER, 251' left of centerline, 24' AGL/1144' MSL. Trees beginning 1.1 NM from DER, 2122' left of centerline, up to 76' AGL/1336' MSL. Tower 4.2 NM from DER, 3291' right of centerline, 236' AGL/1980' MSL. **Rwy 24**, bush, sign, and trees beginning 41' from DER, 248' left of centerline, up to 100' AGL/1259' MSL. Trees beginning 150' from DER, 414' right of centerline, up to 67' AGL/1206' MSL.**SALISBURY, MD**

SALISBURY-OCEAN CITY WICOMICO RGNL (SBY)

AMDT 1 10322 (FAA)

NOTE: **Rwy 5**, terrain and trees beginning 21' from DER, right and left of centerline, up to 100' AGL/148' MSL. Poles beginning 1213' from DER, 664' right of centerline, up to 36' AGL/85' MSL. Antenna on building 1388' from DER, 49' left of centerline, 36' AGL/86' MSL. **Rwy 14**, trees beginning 1539' from DER, right and left of centerline, up to 100' AGL/153' MSL. **Rwy 23**, trees beginning 22' from DER, right and left of centerline, up to 100' AGL/163' MSL. Vehicles on road beginning 220' from DER, right and left of centerline, up to 17' AGL/60' MSL. Antenna on building 1141' from DER, 304' right of centerline, 47' AGL/83' MSL. **Rwy 32**, trees beginning 14' from DER, right and left of centerline, up to 100' AGL/134' MSL. Hangars beginning 121' from DER, 510' left of centerline, up to 23' AGL/72' MSL. Trailer 396' from DER, 275' left of centerline, 10' AGL/59' MSL.

13234



TAKEOFF MINIMUMS AND (OBSTACLE) DEPARTURE PROCEDURES





TAKEOFF MINIMUMS AND (OBSTACLE) DEPARTURE PROCEDURES



13234

SALUDA, VA

HUMMEL FIELD (W75)

AMDT 1 01305 (FAA)

DEPARTURE PROCEDURE: **Rwys 1, 19**, climb runway heading to 1000 before turning on course.NOTE: **Rwy 1**, 23' AGL tree left of DER, 65' AGL tree 663' from DER, 129' left of centerline. **Rwy 19**, 26' AGL tree 237' from DER, 116' right of centerline.**SOUTH BOSTON, VA**

WILLIAM M. TUCK (W78)

AMDT 3A 12012 (FAA)

TAKEOFF MINIMUMS: **Rwy 1**, 300-1. **Rwys 6, 24**, NA.NOTE: **Rwy 1**, tower 334' from DER, 283' left of centerline, 72' AGL/502' MSL.**SOUTH HILL, VA**

MECKLENBURG-BRUNSWICK RGNL (AVC)

AMDT 2 10210 (FAA)

NOTE: **Rwy 1**, train on tracks 118' from DER, 514' left of centerline, 23' AGL/452' MSL. Trees beginning 181' from DER, 408' left of centerline, up to 80' AGL/500' MSL. Trees beginning 1858' from DER, 600' right of centerline, up to 71' AGL/500' MSL. **Rwy 19**, trees beginning 191' from DER, 13' left of centerline, up to 77' AGL/457' MSL. Trees beginning 1176' from DER, 57' right of centerline, up to 76' AGL/500' MSL.**STAFFORD, VA**

STAFFORD RGNL (RMN)

AMDT 1 13234 (FAA)

TAKEOFF MINIMUMS: **Rwy 33**, 300-2 or std. w/min. climb of 304' per NM to 700.DEPARTURE PROCEDURE: **Rwy 15**, climbing left turn to 2000 on BRV R-310 direct BRV VORTAC before proceeding on course. **Rwy 33**, climbing left turn to 2000 on BRV R-306 direct BRV VORTAC before proceeding on course.NOTE: **Rwy 15**, approach light, 8' from DER, 9' right of centerline, 2' AGL/174' MSL. Multiple trees beginning 183' from DER, 598' left of centerline, up to 100' AGL/323' MSL. Multiple trees beginning 2197' from DER, 912' right of centerline, up to 100' AGL/274' MSL. **Rwy 33**, REIL, 40' from DER, 123' right of centerline, 2' AGL/214' MSL. REIL, 40' from DER, 123' left of centerline, 2' AGL/214' MSL. Tower, 9344' from DER, 420' left of centerline, 168' AGL/529' MSL. Tower, 9312' from DER, 357' left of centerline, 151' AGL/467' MSL. Multiple trees, beginning 978' from DER, 10' left of centerline, up to 100' AGL/245' MSL. Multiple trees, beginning 234' from DER, 100' right of centerline, up to 100' AGL/384' MSL.**STAUNTON-WAYNESBORO-****HARRISONBURG, VA**

SHENANDOAH VALLEY RGNL (SHD)

AMDT 6 09239 (FAA)

TAKEOFF MINIMUMS: **Rwy 5**, std. w/ min. climb of 273' per NM to 3800, or 2200-2½ for climb in visual conditions. **Rwy 23**, standard, or 2200-2½ for climb in visual conditions.DEPARTURE PROCEDURE: **Rwy 5**, climb heading 047° to 3400 before turning right, or for climb in visual conditions cross Shenandoah Valley Rgnl airport at or above 3300 before proceeding on course. **Rwy 23**, climb heading 227° to 4400 before proceeding on course, or for climb in visual conditions cross Shenandoah Valley Rgnl airport at or above 3300 before proceeding on course.NOTE: **Rwy 5**, trees 1720' from DER, 635' right of centerline, up to 100' AGL/1279' MSL. **Rwy 23**, tree 679' from DER, 616' left of centerline, 35' AGL/1194' MSL.**STEVENSVILLE, MD**

BAY BRIDGE (W29)

ORIG 07270 (FAA)

TAKEOFF MINIMUMS: **Rwy 29**, 500-3 or std. w/min. climb of 317' per NM to 800.NOTE: **Rwy 11**, road 354' from DER, on centerline, 17' AGL/35' MSL. Multiple trees beginning 1471' from DER, 32' left of centerline, up to 100' AGL/119' MSL. Multiple trees beginning 1485' from DER, 16' left of centerline, up to 100' AGL/119' MSL. **Rwy 29**, twin bridges 2.25 NM from DER, 2767' right of centerline, 410' AGL/410' MSL.**SUFFOLK, VA**

SUFFOLK EXECUTIVE (SFQ)

AMDT 5 13122 (FAA)

NOTE: **Rwy 4**, trees beginning 4' from DER, 462' right and 428' left of centerline, up to 100' AGL/173' MSL. Trees beginning 1052' from DER, 783' right and 554' left of centerline, up to 100' AGL/173' MSL. Transmission poles and T-L towers beginning 1291' from DER, 600' right of centerline, up to 65' AGL/130' MSL. **Rwy 7**, trees beginning 10' from DER, 541' right and 400' left of centerline, up to 100' AGL/161' MSL. Trees beginning 1004' from DER 689' right of and 1280' left of centerline, up to 100' AGL/160' MSL. Transmission poles and T-L towers beginning 1152' from DER, right and left of centerline, up to 65' AGL/130' MSL. **Rwy 22**, trees beginning 44' from DER, 342' right and 494' left of centerline, up to 100' AGL/174' MSL. Trees beginning 1005' from DER, 1078' right and 481' left of centerline, up to 100' AGL/174' MSL. Vehicles on road beginning 483' from DER, right and left of centerline, up to 15' AGL/80' MSL. **Rwy 25**, vehicles on road beginning 199' from DER, right and left of centerline, up to 17' AGL/84' MSL. Trees beginning 231' from DER, right and left of centerline, up to 100' AGL/186' MSL.

22 AUG 2013 to 19 SEP 2013

22 AUG 2013 to 19 SEP 2013

13234



TAKEOFF MINIMUMS AND (OBSTACLE) DEPARTURE PROCEDURES



TANGIER, VA

TANGIER ISLAND (TGI)

ORIG 09015 (FAA)

NOTE: **Rwy 2**, vehicle on road 343' from DER, on centerline, 15' AGL/19' MSL. Boat masts 638' from DER, 632' right to 755' left of centerline, up to 63' MSL. **Rwy 20**, buildings beginning 7' from DER, 206' left of centerline, 45' AGL/50' MSL. Rock wall at DER, 57' right of centerline, 4' AGL/8' MSL.

TAPPAHANNOCK, VA

TAPPAHANNOCK-ESSEX COUNTY (XSA)

ORIG 07298 (FAA)

TAKEOFF MINIMUMS: **Rwy 10**, 300-1¼ or std. w/ min. climb of 303' per NM to 500. **Rwy 28**, 300-1 or std. w/ min. climb of 366' per NM to 500.

NOTE: **Rwy 10**, terrain 6' from DER, 20' left of centerline, up to 135' MSL. Terrain 29' from DER, 281' left of centerline, up to 139' MSL. **Rwy 28**, terrain beginning 12' from DER, 5' right of centerline, up to 151' MSL.

WALLOPS ISLAND, VA

WALLOPS FLIGHT FACILITY (WAL)

ORIG 09127 (FAA)

NOTE: **Rwy 4**, trees beginning 1254' from DER, 741' left of centerline, up to 100' AGL/109' MSL. Trees beginning 1814' from DER, 79' right of centerline, up to 100' AGL/134' MSL. **Rwy 10**, trees beginning 1252' from DER, 818' left of centerline, up to 100' AGL/124' MSL. **Rwy 17**, trees beginning 169' from DER, 218' left of centerline, up to 100' AGL/119' MSL. **Rwy 22**, trees beginning 793' from DER, 315' left of centerline, up to 100' AGL/129' MSL. **Rwy 28**, trees beginning 945' from DER, 495' right of centerline, up to 100' AGL/139' MSL. **Rwy 35**, trees beginning 3' from DER, 394' left of centerline, up to 100' AGL/124' MSL. Trees beginning 21' from DER, 219' right of centerline, up to 100' AGL/124' MSL.

WAKEFIELD, VA

WAKEFIELD MUNI (AKQ)

ORIG 78278 (FAA)

DEPARTURE PROCEDURE: Climb straight ahead to 500 before proceeding on course.

WARRENTON, VA

WARRENTON-FAUQUIER (HWY)

ORIG 09099 (FAA)

NOTE: **Rwy 15**, trees 436' from DER, 518' right of centerline, 100' AGL/439' MSL. Vehicle on road 647' from DER, 649' right of centerline, 15' AGL/354' MSL. Trees 1034' from DER, 763' left of centerline, 100' AGL/449' MSL. Trees 1924' from DER, 781' right of centerline, 100' AGL/459' MSL. Trees beginning 2239' from DER, 41' left of centerline, up to 100' AGL/459' MSL. **Rwy 33**, trees beginning 1272' from DER, 59' right of centerline, up to 41' AGL/370' MSL. Trees beginning 2610' from DER, 116' left of centerline, up to 74' AGL/413' MSL.

WASHINGTON, DC

MANASSAS RGNL/HARRY P. DAVIS FIELD (HEF)

AMDT 4 13010 (FAA)

NOTE: **Rwy 16L**, trees beginning 1247' from DER, 4' left of centerline, up to 106' AGL/311' MSL. Tree 1811' from DER, 158' left of centerline, 100' AGL/277' MSL. Trees beginning 1810' from DER, 14' right of centerline, up to 88' AGL/303' MSL. **Rwy 16R**, tree 749' from DER, 10' left of centerline, 23' AGL/194' MSL. Tree 638' from DER, 563' right of centerline, 67' AGL/227' MSL. Trees beginning 119' from DER, 497' right of centerline, up to 26' AGL/195' MSL. Trees 980' from DER, 707' right of centerline, up to 46' AGL/236' MSL. **Rwy 34R**, vegetation and trees beginning 29' from DER, 78' left of centerline, up to 33' AGL/197' MSL. Trees 518' from DER, 596' right of centerline, up to 29' AGL/206' MSL. Trees 2903' from DER, 1102' right of centerline, up to 80' AGL/280' MSL. Sign 70' from DER, 90' right of centerline, 6' AGL/190' MSL. Airfield lights beginning 25' from DER, 94' right of centerline, up to 5' AGL/193' MSL. Vehicle on road 198' from DER, 9' right of centerline, 15' AGL/214' MSL. **Rwy 34L**, trees beginning 1154' from DER, 291' left of centerline, up to 83' AGL/283' MSL. Light poles 1164' from DER, 759' left of centerline, 57' AGL/247' MSL. Tower 3390' from DER, 1103' left of centerline, 68' AGL/274' MSL. Building 2121' from DER, 328' left of centerline, 32' AGL/242' MSL. Trees 279' from DER, 130' right of centerline, up to 15' AGL/210' MSL. Trees beginning 1596' from DER, 374' right of centerline, up to 34' AGL/233' MSL. Vehicle on road 279' from DER, 130' right of centerline, 15' AGL/210' MSL.

22 AUG 2013 to 19 SEP 2013

22 AUG 2013 to 19 SEP 2013



TAKEOFF MINIMUMS AND (OBSTACLE) DEPARTURE PROCEDURES



13234

WASHINGTON, DC (CON'T)

RONALD REAGAN WASHINGTON NATIONAL (DCA)

AMDT 7 12040 (FAA)

TAKEOFF MINIMUMS: **Rwy 1**, 600-2 w/min. climb of 270' per NM to 1400 or std. w/min. climb of 500' per NM to 800. **Rwy 4**, 400-3 or std. w/min. climb of 500' per NM to 420. **Rwy 15**, 300-1¼ or std. w/min climb of 205' per NM to 300. **Rwy 19**, 300-1½ or std. w/min climb of 205' per NM to 300. **Rwy 22**, 500-3 or std. w/min. climb of 280' per NM to 700. **Rwy 33**, std. w/min. climb of 246' per NM to 1100.

DEPARTURE PROCEDURE: **Rwy 1**, climbing left turn as soon as practical to intercept DCA VOR/DME R-328. Maintain 5000 or as assigned. **Rwy 4**, climbing right turn as soon as practical to intercept DCA VOR/DME R-070. Maintain 2000 or as assigned. **Rwy 15**, climb heading 152° to 5000 or as assigned. **Rwy 19**, climb heading 185° to 500 before turning right. Maintain 5000 or as assigned. **Rwy 22**, climb heading 215° to 3000 or as assigned. **Rwy 33**, climb on DCA VOR/DME R-328. Maintain 5000 or as assigned.

NOTE: **Rwy 1**, building 119' from DER, 330' right of centerline, 16' AGL/23' MSL. Fence and trees beginning 261' from DER, 211' left of centerline, up to 62' AGL/72' MSL. Trees beginning 1365' from DER, 331' right of centerline, 47' AGL/51' MSL. Monument 1.7 NM from DER, 1784' left of centerline, 556' AGL/596' MSL. **Rwy 4**, monument 2.4 NM from DER, 656' right of centerline, 307' AGL/377' MSL. **Rwy 15**, tree 1.4 NM from DER, 1290' left of centerline, 74' AGL/223' MSL. **Rwy 22**, poles beginning 500' from DER, on centerline, up to 11' AGL/28' MSL. Trees beginning 1024' from DER, 557' right of centerline, up to 78' AGL/90' MSL. Transmission pole 4732' from DER, 888' right of centerline, 100' AGL/149' MSL. Building 4903' from DER, 651' right of centerline, 97' AGL/144' MSL. Tower 1.3 NM from DER, 1421' left of centerline, 170' AGL/223' MSL. Crane 1.7 NM from DER, 1912' right of centerline, 240' AGL/276' MSL. Building 1.9 NM from DER, 2566' right of centerline, 200' AGL/370' MSL. **Rwy 33**, trees beginning 140' from DER, left and right of centerline, up to 70' AGL/80' MSL. Blast fence beginning 174' from DER, left and right of centerline, up to 9' AGL/24' MSL. Poles beginning 1221' from DER, left and right of centerline, up to 73' AGL/106' MSL. Buildings beginning 1557' from DER, 623' left of centerline, up to 102' AGL/142' MSL. Elevator 1829' from DER, 345' right of centerline, 71' AGL/88' MSL. Flaggpole 1.7 NM from DER, 2118' left of centerline, 108' AGL/308' MSL.

NOTE: Prohibited area P-56 1.5 NM north of airport.

WASHINGTON DULLES INTL (IAD)

AMDT 2 12208 (FAA)

DEPARTURE PROCEDURE: **Rwy 12**, climb heading 121° to 700 before turning left.

NOTE: **Rwy 1C**, trees 2815' from DER, 1031' left of centerline, up to 80' AGL/345' MSL. Sign 64' from DER, 303' right of centerline, 13' AGL/272' MSL. **Rwy 1L**, tower 1917' from DER, 680' left of centerline, 51' AGL/330' MSL. **Rwy 19C**, sign 100' from DER, 472' left of centerline, 4' AGL/289' MSL. Vehicles on road 24' from DER, 274' right of centerline, up to 15' AGL/293' MSL. **Rwy 30**, trees 2264' from DER, 1033' right of centerline, up to 72' AGL/383' MSL.

WAYNESBORO, VA

EAGLE'S NEST (W13)

ORIG 11181 (FAA)

TAKEOFF MINIMUMS: **Rwy 6**, std. w/min. climb of 400' per NM to 3300, or 2100-3 for climb in visual conditions. **Rwy 24**, 300-2 w/min. climb of 400' per NM to 3800 or 2100-3 for climb in visual conditions.

DEPARTURE PROCEDURE: **Rwy 6**, climb heading 061° to 3300 before proceeding on course, or for climb in visual conditions: cross Eagle's Nest Airport at or above 3400 MSL before proceeding on course. **Rwy 24**, climb heading 241° to 3800 before proceeding on course. Or for climb in visual conditions: cross Eagle's Nest Airport at or above 3400 MSL before proceeding on course.

NOTE: **Rwy 6**, hangar at DER, 220' left of centerline, 30' AGL/1469' MSL. Trees beginning 35' from DER, 158' right of centerline, up to 100' AGL/1539' MSL. Vehicles on road beginning 131' from DER, 201' left of centerline, up to 15' AGL/1454' MSL. Trees beginning 263' from DER, 189' left of centerline, up to 100' AGL/1539' MSL. Towers beginning 1.41NM from DER, 2539' right of centerline, 300' AGL/1670' MSL. **Rwy 24**, Trees beginning at DER left and right of centerline up to 100' AGL/1579' MSL. Trees beginning 1259' from DER, 143' right of centerline, up to 100' AGL/1730' MSL.

WEST POINT, VA

MIDDLE PENINSULA RGNL (FYJ)

ORIG 08157 (FAA)

NOTE: **Rwy 10**, multiple trees beginning 86' from DER, left and right of centerline, up to 100' AGL/129' MSL. **Rwy 28**, multiple trees beginning 33' from DER, left and right of centerline, up to 100' AGL/119' MSL. Ship mast 3427' from DER, left and right of centerline, 135' AGL/135' MSL.

WESTMINSTER, MD

CARROLL COUNTY RGNL/JACK B. POAGE FIELD

(DMW)

AMDT 5 10322 (FAA)

TAKEOFF MINIMUMS: **Rwy 16**, 400-2¼ or std. w/min. climb of 215' per NM to 1300.

NOTE: **Rwy 16**, fence 188' from DER, 527' left of centerline, 10' AGL/789' MSL. Vehicle on road 558' from DER, 620' right of centerline, 15' AGL/794' MSL. Trees beginning 786' from DER, 657' left of centerline, up to 100' AGL/879' MSL. Tree 1882' from DER, 494' right of centerline, 100' AGL/879' MSL. Tower 2.3 NM from DER, 2042' left of centerline, 195' AGL/1144' MSL. **Rwy 34**, rising terrain and trees beginning 105' from DER, 1213' left of centerline, up to 100' AGL/902' MSL. Trees beginning 967' from DER, 395' right of centerline, up to 100' AGL/868' MSL.

CLEARVIEW AIRPARK (2W2)

ORIG 09239 (FAA)

TAKEOFF MINIMUMS: **Rwy 32**, 300-2¼ or std. w/min. climb of 290' per NM to 1200.

NOTE: **Rwy 14**, vehicles and aircraft on road/taxiway 14' from DER, 47' right to left of centerline, 15' AGL/834' MSL. Trees beginning 35' from DER, 200' left of centerline, up to 100' AGL/939' MSL. Trees beginning 21' from DER, 90' right of centerline, up to 100' AGL/919' MSL. **Rwy 32**, vehicle on road 191' from DER, 516' left of centerline, 15' AGL/774' MSL. Trees beginning 8' from DER, 24' left of centerline, up to 100' AGL/959' MSL. Trees beginning 60' from DER, 50' right of centerline, up to 100' AGL/859' MSL.

13234



TAKEOFF MINIMUMS AND (OBSTACLE) DEPARTURE PROCEDURES



22 AUG 2013 to 19 SEP 2013

22 AUG 2013 to 19 SEP 2013



TAKEOFF MINIMUMS AND (OBSTACLE) DEPARTURE PROCEDURES



13234

WILLIAMSBURG, VA

WILLIAMSBURG-JAMESTOWN (JGG)

AMDT 2 11349 (FAA)

DEPARTURE PROCEDURE: **Rwy 31**, climb heading 311° to 700 before turning right.

NOTE: **Rwy 13**, boat on creek 468' from DER, 608' left of centerline, up to 35' AGL/35' MSL. Homes beginning 1399' from DER, 278' left of centerline, up to 25' AGL/94' MSL. Trees beginning 712' from DER, left and right of centerline, up to 100' AGL/169' MSL. **Rwy 31**, aircraft on tarmac 2' from DER, 209' right of centerline, up to 20' AGL/79' MSL. Hanger 418' from DER, 268' right of centerline, up to 25' AGL/84' MSL. Multiple buildings and homes beginning 320' from DER, left and right of centerline, up to 30' AGL/109' MSL.

Multiple trees beginning 1' from DER, left and right of centerline, up to 100' AGL/199' MSL.

WILMINGTON, DE

NEW CASTLE (ILG)

ORIG 07074 (FAA)

TAKEOFF MINIMUMS: **Rwy 19**, 300-1 or std. w/ min. climb of 266' per NM to 300.

NOTE: **Rwy 1**, multiple trees beginning 751' from DER, 32' left of centerline, up to 59' AGL/120' MSL, tree 1219' from DER, 482' right of centerline, 57' AGL/118' MSL, bush 118' from DER, 385' left of centerline, 4' AGL/65' MSL. **Rwy 9**, multiple trees beginning 1229' from DER, 30' right of centerline up to 62' AGL/133' MSL, tree 975' from DER, 66' left of centerline, 53' AGL/124' MSL, light pole 948' from DER, 596' right of centerline, 44' AGL/115' MSL, tree 1740' from DER, 458' left of centerline, 83' AGL/134' MSL, light pole 945' from DER, 316' right of centerline, 38' AGL/109' MSL, rod on building 916' from DER, 457' left of centerline, 29' AGL/100' MSL. **Rwy 14**, obstacle light 553' from DER, 440' left of centerline, 29' AGL/103' MSL, rod on obstacle light 606' from DER, 615' left of centerline, 19' AGL/93' MSL. **Rwy 19**, antenna on obstruction light tower 4469' from DER, 1684' right of centerline, 153' AGL/228' MSL, tree 1575' from DER, 850' right of centerline, 45' AGL/120' MSL, obstruction light on sign 971' from DER, 448' left of centerline, 28' AGL/103' MSL. **Rwy 27**, tree 697' from DER, 533' left of centerline, 68' AGL/147' MSL. Tree 1110' from DER, 584' right of centerline, 38' AGL/117' MSL, pole 793' from DER, 615' right of centerline, 28' AGL/107' MSL, bush 408' from DER, 415' left of centerline, 12' AGL/91' MSL. **Rwy 32**, tree 711' from DER, 207' right of centerline, 29' AGL/104' MSL, tree 1162' from DER, 83' right of centerline, 32' AGL/107' MSL.

WINCHESTER, VA

WINCHESTER RGNL (OKV)

ORIG-A 11097 (FAA)

TAKEOFF MINIMUMS: **Rwy 32**, 800-2 or std. with a min. climb of 210' per NM to 1700.

DEPARTURE PROCEDURE: **Rwy 32**, climb runway heading to 1700 before turning on course.

NOTE: **Rwy 14**, trees beginning 496' from DER, 587' right of centerline, up to 66' AGL/765' MSL. Trees beginning 591' from DER, 561' left of centerline, up to 21' AGL/730' MSL. **Rwy 32**, trees beginning 374' from DER, 9' right of centerline, up to 66' AGL/805' MSL. Trees beginning 86' from DER, 27' left of centerline, up to 55' AGL/794' MSL.

WISE, VA

LONESOME PINE (LNP)

AMDT 3 10210 (FAA)

DEPARTURE PROCEDURE: **Rwy 6**, climb on heading 062° to 3600 before proceeding on course. **Rwy 24**, climb on heading 247° to 4900 before proceeding on course.

NOTE: **Rwy 6**, trees beginning 775' from DER, left and right of centerline, up to 100' AGL/2801' MSL. Terrain beginning 86' from DER, left and right of centerline, up to 2728' MSL. **Rwy 24**, trees beginning 159' from DER, left and right of centerline, up to 100' AGL/2794' MSL. Obstruction light on LOC 308' from DER 22' left of centerline, 8' AGL/2678' MSL. Obstruction light on LOC 304' from DER 22' right of centerline, 8' AGL/2678' MSL. Obstruction light on LOC/DME 306' from DER, 189' right of centerline, 15' AGL/2685' MSL. Terrain 159' from DER, 363' left of centerline, 2676' MSL.

22 AUG 2013 to 19 SEP 2013

22 AUG 2013 to 19 SEP 2013

13234



TAKEOFF MINIMUMS AND (OBSTACLE) DEPARTURE PROCEDURES

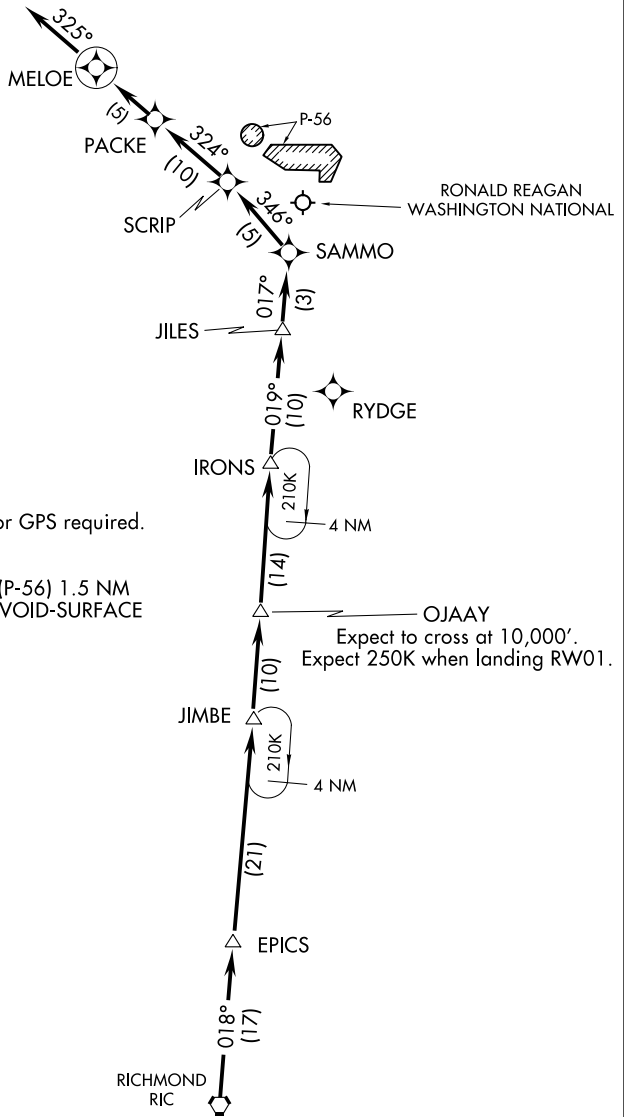


(OJAAY.OJAAY1) 09183

OJAAY ONE ARRIVAL (RNAV)

ST-443 (FAA)
WASHINGTON/ RONALD REAGAN WASHINGTON NATIONAL
WASHINGTON, DC

POTOMAC APP CON
119.85 322.3
WASHINGTON NATIONAL ATIS
132.65



NOTE: RADAR Required.

NOTE: 1. DME/DME/IRU or GPS required.
2. RNAV 1.

NOTE: PROHIBITED AREA (P-56) 1.5 NM
NORTH OF DCA-AVOID-SURFACE
TO 18,000 MSL.

OJAAY
Expect to cross at 10,000'.
Expect 250K when landing RW01.

NOTE: Chart not to scale.

ARRIVAL ROUTE DESCRIPTION

From RIC VORTAC via 018° track to EPICS WP, thence as depicted to MELOE WP, depart MELOE WP heading 325° for vectors to final approach course.

LANDING RWY 1: After IRONS, expect radar vectors to final approach course.

LANDING RWY 19: Depart MELOE WP heading 325° for vectors to final approach

(OJAAY.OJAAY1) 09183

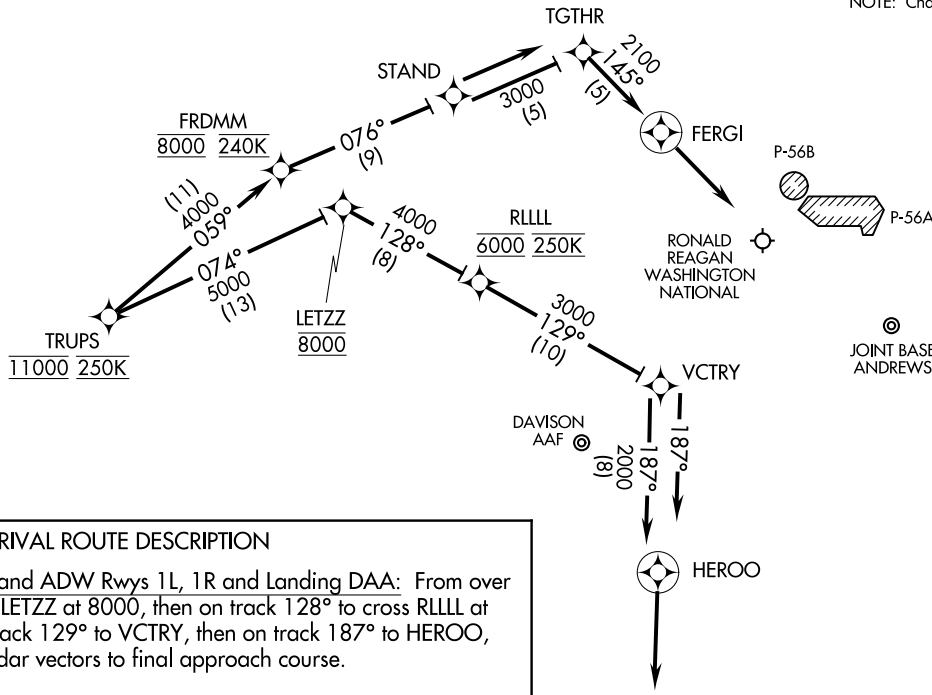
WASHINGTON, DC
WASHINGTON/ RONALD REAGAN WASHINGTON NATIONAL

NE-3, 22 AUG 2013 to 19 SEP 2013

NE-3, 22 AUG 2013 to 19 SEP 2013

TRUPS TWO ARRIVAL (RNAV) Arrival Routes
(TRUPS, TRUPS2) 13178

POTOMAC APP CON
118.67 323.175
RONALD REAGAN WASHINGTON
NATIONAL ATIS 132.65
JOINT BASE ANDREWS ATIS
113.1 251.05
DAVISON AAF ATIS
128.175 230.0



NOTE: Chart not to scale.

ARRIVAL ROUTE DESCRIPTION

Landing DCA Rwys 1, 4, 33, and ADW Rwys 1L, 1R and Landing DAA: From over TRUPS on track 074° to cross LETZZ at 8000, then on track 128° to cross RLLLL at 6000 and at 250K, then on track 129° to VCTRY, then on track 187° to HEROO, then on track 187°, expect radar vectors to final approach course.

Landing DCA Rwys 15, 19, 22: From over TRUPS on track 059° to cross FRDMM at 8000 and 240K, then on track 076° to STAND, then on track 076° to TGTHR, then on track 145° to FERGI, then on track 145°, expect radar vectors to final approach course prior to FERGI.

Landing ADW Rwys 19L, 19R: From over TRUPS on track 059° to cross FRDMM at 8000 and at 240K, then on track 076° to STAND, then on track 076°, expect radar vectors to final approach course.

NOTE: PROHIBITED AREA (P-56) NORTH OF DCA - AVOID- SURFACE TO 18000.

NOTE: Maintain last assigned ATC altitude until cleared to "descend via the TRUPS TWO," then comply with altitude restrictions as published.

TRUPS TWO ARRIVAL (RNAV) Arrival Routes
(TRUPS, TRUPS2) 13178

ST-443 (FAA)

WASHINGTON, DC

WASHINGTON, DC

FRDMM TWO ARRIVAL (RNAV) Transition Routes
(FRDMM.FRDMM2) 13178

FRDMM TWO ARRIVAL (RNAV) Transition Routes
(FRDMM.FRDMM2) 13178

ST-443 (FAA)

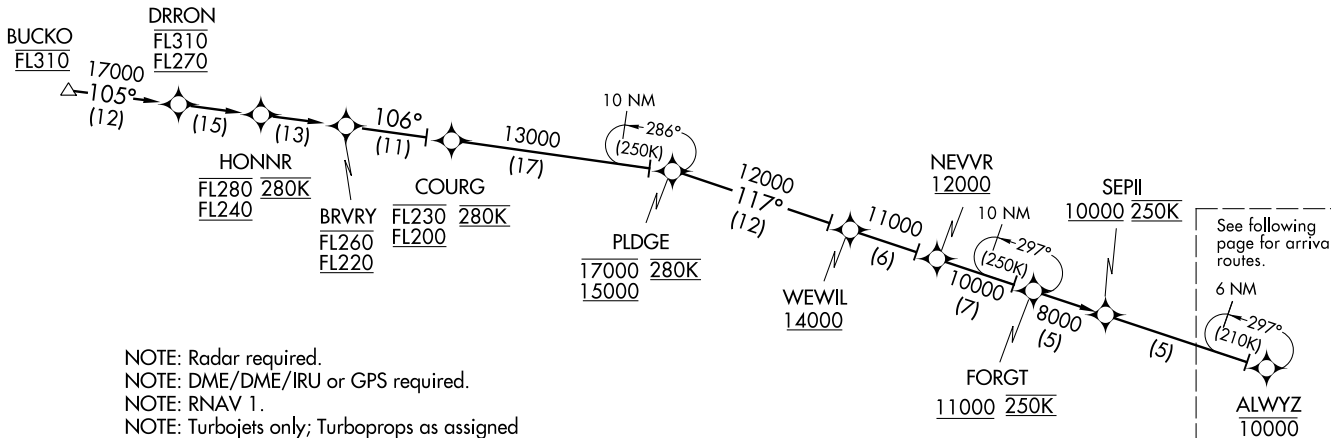
WASHINGTON, DC

BUCKO TRANSITION (BUCKO.FRDMM2):

POTOMAC APP CON
118.67 323.175
RONALD REAGAN WASHINGTON
NATIONAL ATIS 132.65
JOINT BASE ANDREWS ATIS
113.1 251.05
DAVISON AAF ATIS
128.175 230.0



MORGANTOWN
MGW



NOTE: Radar required.
NOTE: DME/DME/IRU or GPS required.
NOTE: RNAV 1.
NOTE: Turbojets only; Turboprops as assigned by ATC only.

(Continued on next page)

NOTE: Chart not to scale.

WASHINGTON, DC

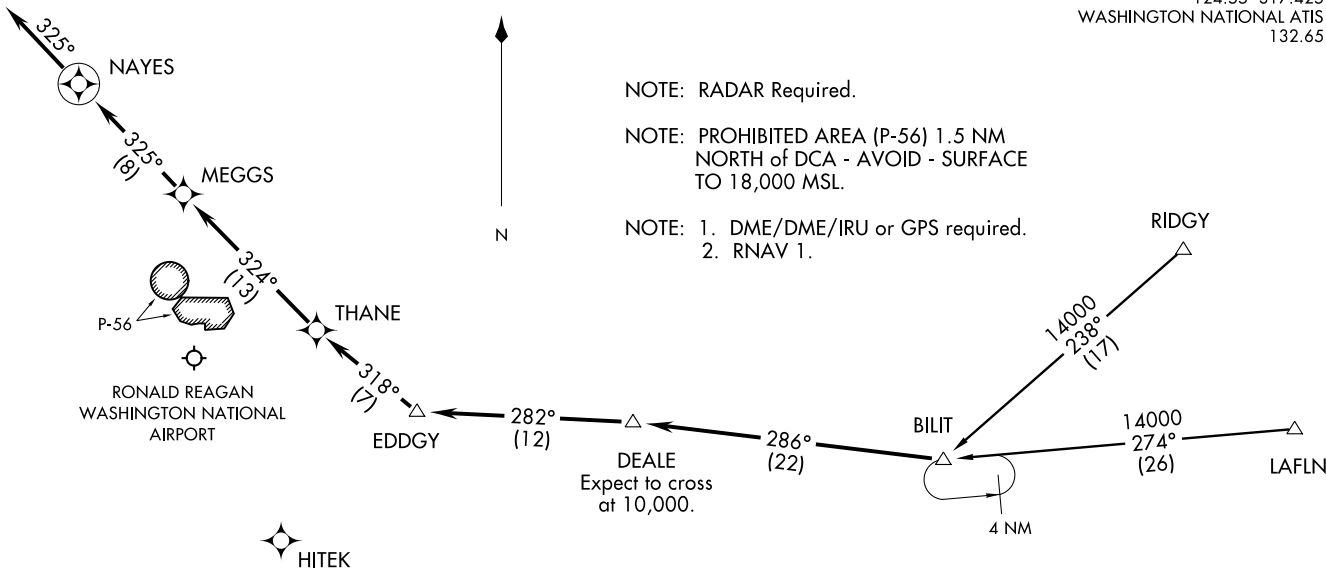
POTOMAC APP CON
124.55 317.425
WASHINGTON NATIONAL ATIS
132.65

(BILT.BILT1) 09071
BILT ONE ARRIVAL (RNAV)

ST-443 (FAA)
WASHINGTON/ RONALD REAGAN WASHINGTON NATIONAL
WASHINGTON, DC

BILT ONE ARRIVAL (RNAV)
(BILT.BILT1) 09071

WASHINGTON/ RONALD REAGAN WASHINGTON NATIONAL
WASHINGTON, DC



- NOTE: RADAR Required.
- NOTE: PROHIBITED AREA (P-56) 1.5 NM NORTH of DCA - AVOID - SURFACE TO 18,000 MSL.
- NOTE: 1. DME/DME/IRU or GPS required.
2. RNAV 1.

ARRIVAL ROUTE DESCRIPTION

LAFN TRANSITION (LAFN.BILT1):
RIDGY TRANSITION (RIDGY.BILT1):

... From BILIT WP via 286° track to DEALE WP, thence as depicted to NAYES WP, depart NAYES WP heading 325° for vectors to final approach course.

LANDING RWY 1: After EDDGY WP, expect radar vectors to final approach course.

LANDING RWY 19: Depart NAYES WP heading 325° for vectors to final approach course.

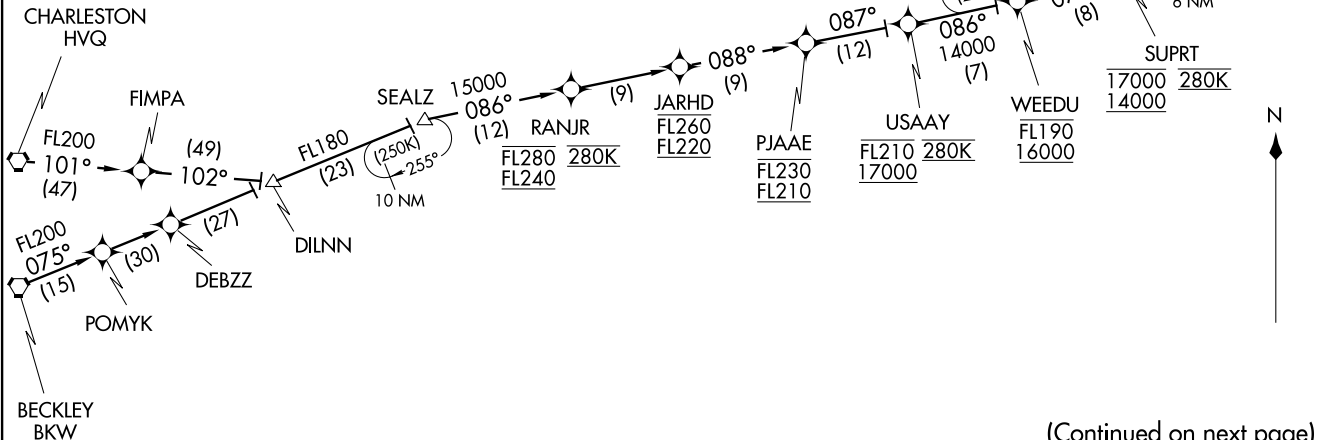
NOTE: Chart not to scale

TRUPS TWO ARRIVAL (RNAV) 13178

WASHINGTON, DC

POTOMAC APP CON
118.67 323.175
RONALD REAGAN WASHINGTON
NATIONAL ATIS 132.65
JOINT BASE ANDREWS ATIS
113.1 251.05
DAVISON AAF ATIS
128.175 230.0

NOTE: Radar required.
NOTE: RNAV 1.
NOTE: DME/DME/IRU or GPS required.
NOTE: Turbojets only; turboprops ATC assigned only.



BECKLEY TRANSITION (BKW.TRUPS2):
CHARLESTON TRANSITION (HVQ.TRUPS2):

(Continued on next page)

NOTE: Chart not to scale.

TRUPS TWO ARRIVAL (RNAV) 13178

WASHINGTON, DC

ST-443 (FAA)

(CLIPR.CLIPR1) 09071

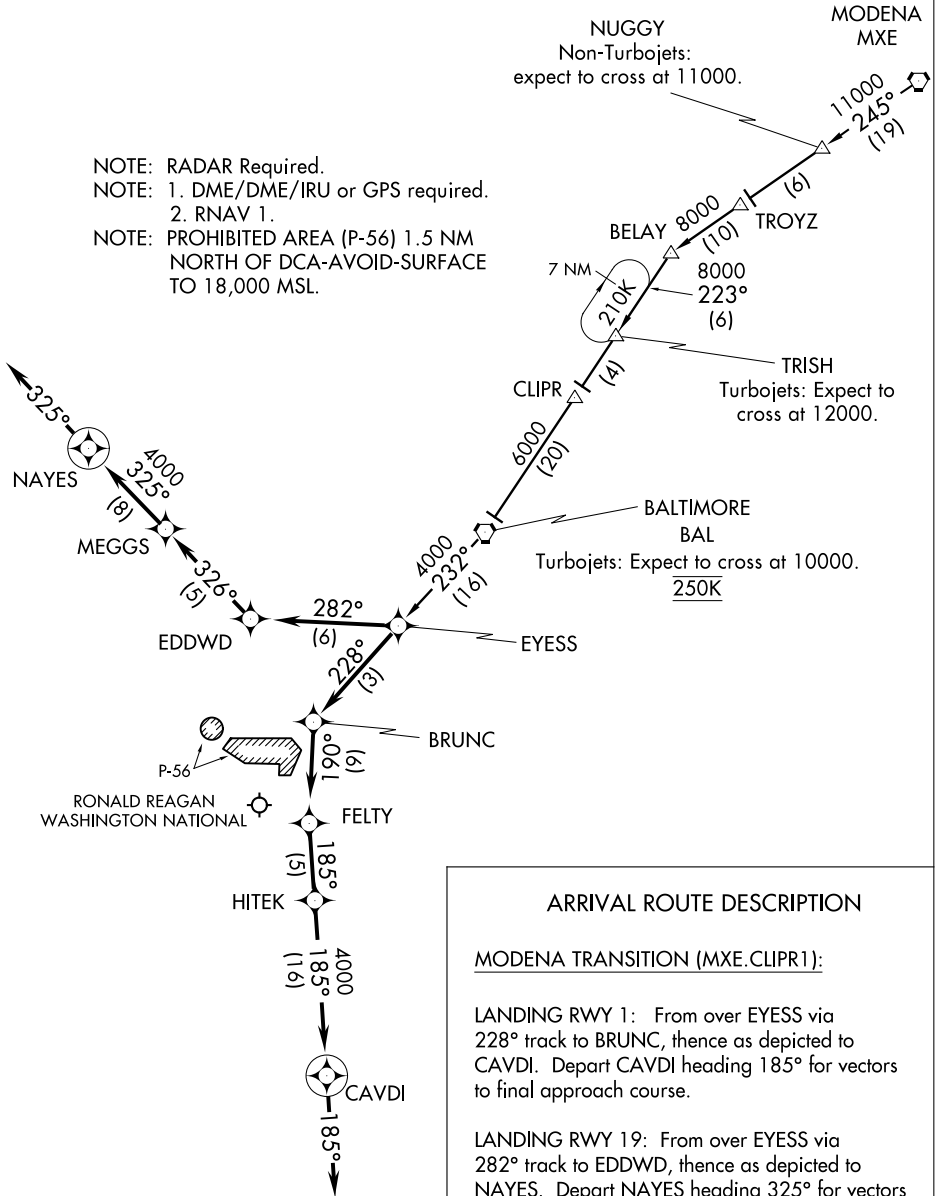
CLIPR ONE ARRIVAL (RNAV)

ST-443 (FAA)

WASHINGTON/ RONALD REAGAN WASHINGTON NATIONAL
WASHINGTON, DC

POTOMAC APP CON
128.7 307.9
WASHINGTON NATIONAL ATIS
132.65

- NOTE: RADAR Required.
- NOTE: 1. DME/DME/IRU or GPS required.
- 2. RNAV 1.
- NOTE: PROHIBITED AREA (P-56) 1.5 NM NORTH OF DCA-AVOID-SURFACE TO 18,000 MSL.



ARRIVAL ROUTE DESCRIPTION

MODENA TRANSITION (MXE.CLIPR1):

LANDING RWY 1: From over EYESS via 228° track to BRUNC, thence as depicted to CAVDI. Depart CAVDI heading 185° for vectors to final approach course.

LANDING RWY 19: From over EYESS via 282° track to EDDWD, thence as depicted to NAYES. Depart NAYES heading 325° for vectors to final approach course..

NOTE: Chart not to scale.

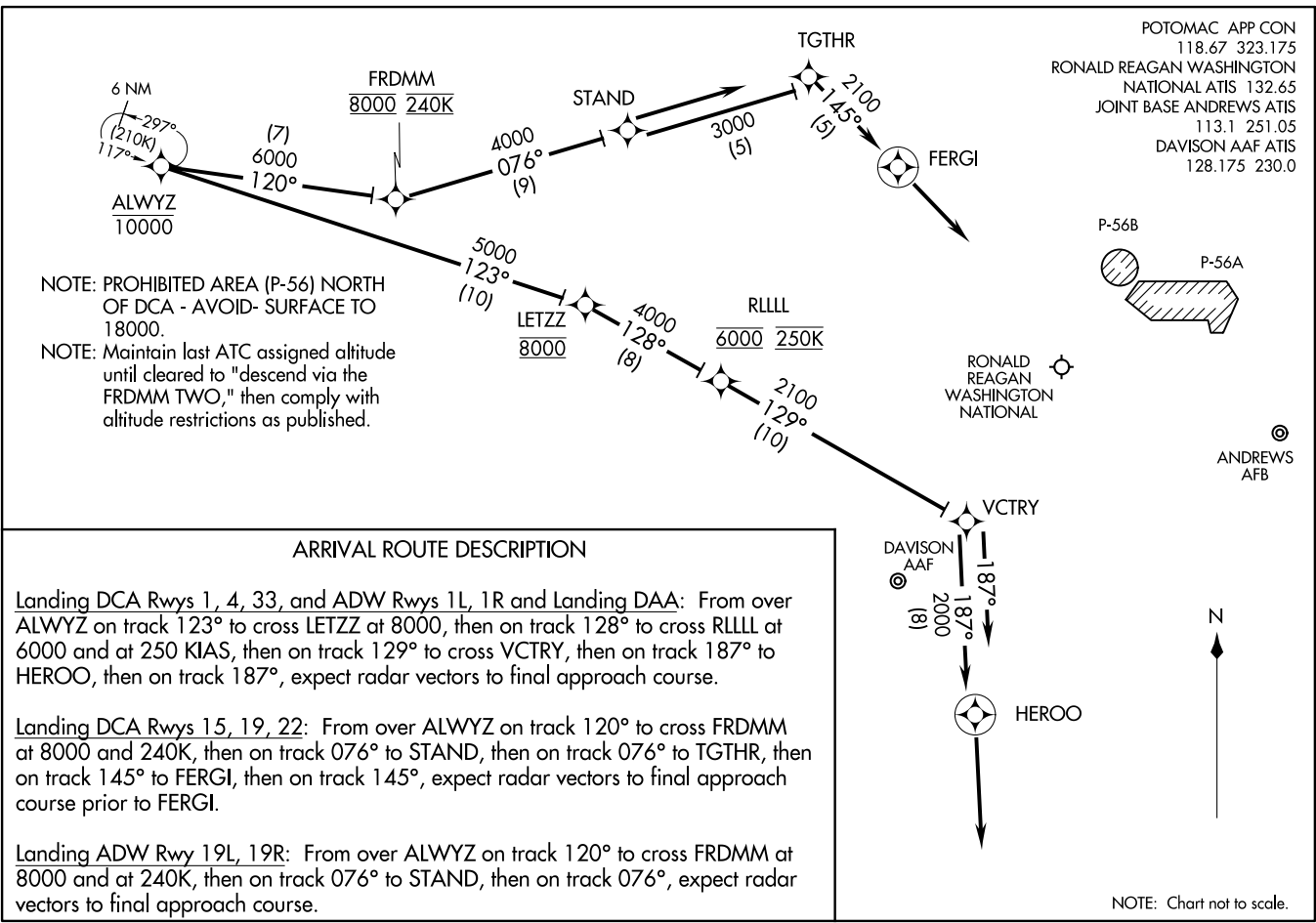
CLIPR ONE ARRIVAL (RNAV)

(CLIPR.CLIPR1) 09071

WASHINGTON, DC
WASHINGTON/ RONALD REAGAN WASHINGTON NATIONAL

NE-3, 22 AUG 2013 to 19 SEP 2013

NE-3, 22 AUG 2013 to 19 SEP 2013



NOTE: PROHIBITED AREA (P-56) NORTH OF DCA - AVOID- SURFACE TO 18000.
NOTE: Maintain last ATC assigned altitude until cleared to "descend via the FRDMM TWO," then comply with altitude restrictions as published.

ARRIVAL ROUTE DESCRIPTION

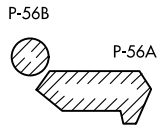
Landing DCA Rwy 1, 4, 33, and ADW Rwy 1L, 1R and Landing DAA: From over ALWYZ on track 123° to cross LETZZ at 8000, then on track 128° to cross RLLLL at 6000 and at 250 KIAS, then on track 129° to cross VCTRY, then on track 187° to HEROO, then on track 187°, expect radar vectors to final approach course.

Landing DCA Rwy 15, 19, 22: From over ALWYZ on track 120° to cross FRDMM at 8000 and 240K, then on track 076° to STAND, then on track 076° to TGTHR, then on track 145° to FERGI, then on track 145°, expect radar vectors to final approach course prior to FERGI.

Landing ADW Rwy 19L, 19R: From over ALWYZ on track 120° to cross FRDMM at 8000 and at 240K, then on track 076° to STAND, then on track 076°, expect radar vectors to final approach course.

NOTE: Chart not to scale.

POTOMAC APP CON
118.67 323.175
RONALD REAGAN WASHINGTON NATIONAL ATIS 132.65
JOINT BASE ANDREWS ATIS 113.1 251.05
DAVISON AAF ATIS 128.175 230.0



ANDREWS AFB



ARRIVAL ROUTE DESCRIPTION

BUCKO TRANSITION (BUCKO.NUMMY2): From over BUCKO on ESL R-282 to ESL VOR/DME, then on ESL R-103 to DRUZZ, then on AML R-297 to AML VOR/DME.

Landing DCA Rwy's 1, 4, 33, ADW Rwy's 1L, 1R, and DAA: From over AML VOR/DME on AML R-130 to cross NUMMY/AML 17 DME at 6000, then on heading 187°, expect radar vectors to final approach course.

Landing DCA Rwy's 15, 19, 22 and ADW Rwy's 19L, 19R: Depart AML VOR/DME on heading 070°, expect radar vectors to final approach course.

NUMMY TWO ARRIVAL
(AML.NUMMY2) 13234

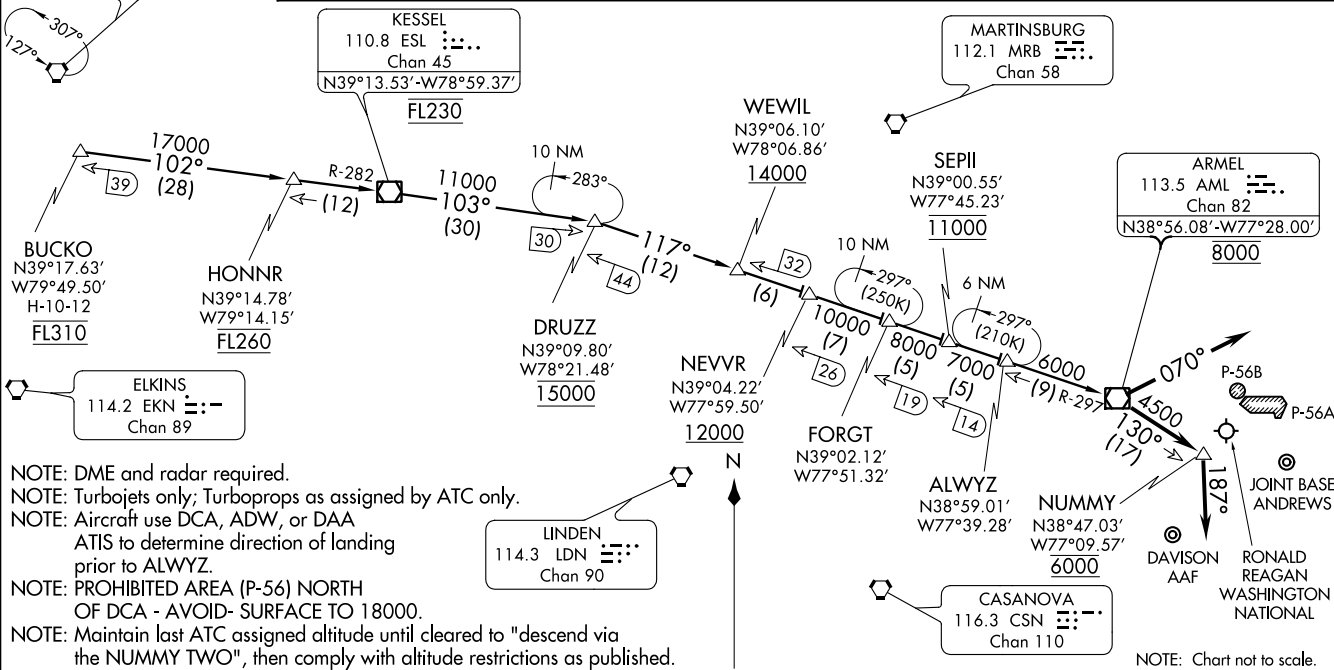
NUMMY TWO ARRIVAL
(AML.NUMMY2) 13234

POTOMAC APP CON
118.67 323.175
RONALD REAGAN
WASHINGTON NATIONAL
ATIS 132.65
JOINT BASE ANDREWS ATIS
113.1 251.05
DAVISON AAF ATIS
128.175 230.0

MORGANTOWN
111.6 MGW
Chan 53

KESSEL
110.8 ESL
Chan 45
N39°13.53'-W78°59.37'
FL230

MARTINSBURG
112.1 MRB
Chan 58



- NOTE: DME and radar required.
- NOTE: Turbojets only; Turboprops as assigned by ATC only.
- NOTE: Aircraft use DCA, ADW, or DAA ATIS to determine direction of landing prior to ALWYZ.
- NOTE: PROHIBITED AREA (P-56) NORTH OF DCA - AVOID- SURFACE TO 18000.
- NOTE: Maintain last ATC assigned altitude until cleared to "descend via the NUMMY TWO", then comply with altitude restrictions as published.

ST-443 (FAA)

WASHINGTON, DC

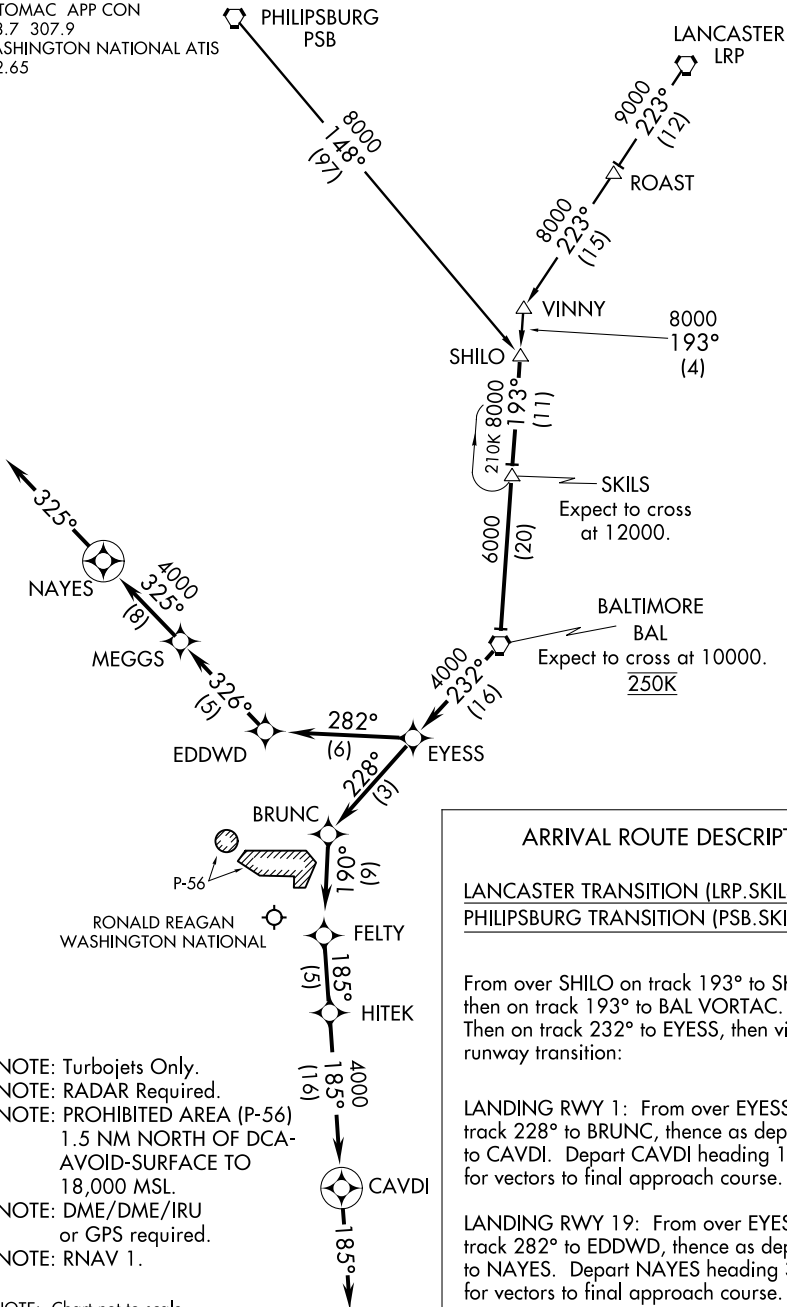
WASHINGTON, DC

SKILS TWO ARRIVAL (RNAV)

WASHINGTON/
RONALD REAGAN WASHINGTON NATIONAL (DCA)

WASHINGTON, DC
RONALD REAGAN WASHINGTON NATIONAL (DCA)

POTOMAC APP CON
128.7 307.9
WASHINGTON NATIONAL ATIS
132.65



NE-3, 22 AUG 2013 to 19 SEP 2013

NE-3, 22 AUG 2013 to 19 SEP 2013

ARRIVAL ROUTE DESCRIPTION

LANCASTER TRANSITION (LRP.SKILS2):
PHILIPSBURG TRANSITION (PSB.SKILS2):

From over SHILO on track 193° to SKILS, then on track 193° to BAL VORTAC. Then on track 232° to EYESS, then via runway transition:

LANDING RWY 1: From over EYESS on track 228° to BRUNC, thence as depicted to CAVDI. Depart CAVDI heading 185° for vectors to final approach course.

LANDING RWY 19: From over EYESS on track 282° to EDDWD, thence as depicted to NAYES. Depart NAYES heading 325° for vectors to final approach course.

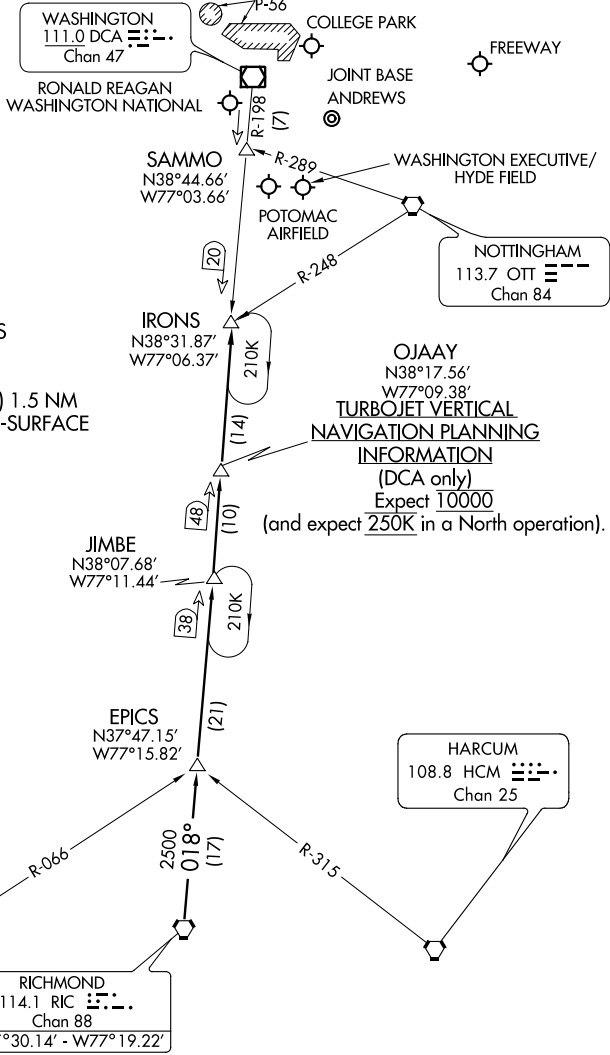
- NOTE: Turbojets Only.
- NOTE: RADAR Required.
- NOTE: PROHIBITED AREA (P-56)
1.5 NM NORTH OF DCA-
AVOID-SURFACE TO
18,000 MSL.
- NOTE: DME/DME/IRU
or GPS required.
- NOTE: RNAV 1.

NOTE: Chart not to scale.

IRONS FOUR ARRIVAL

WASHINGTON, DC

POTOMAC APP CON
 119.85 322.3 (DCA ARRIVALS ONLY)
 128.35 270.275 (ADW ARRIVALS ONLY)
 JOINT BASE ANDREWS ATIS
 113.1 251.05
 WASHINGTON NATIONAL ATIS
 132.65



NOTE: Aircraft use DCA ATIS to determine the direction of landing prior to IRONS INT. (DCA only).

NOTE: PROHIBITED AREA (P-56) 1.5 NM NORTH OF DCA-AVOID-SURFACE TO 18000 MSL.

OJAAY
 N38°17.56'
 W77°09.38'
TURBOJET VERTICAL NAVIGATION PLANNING INFORMATION
 (DCA only)
 Expect 10000
 (and expect 250K in a North operation).

NE-3, 22 AUG 2013 to 19 SEP 2013

NE-3, 22 AUG 2013 to 19 SEP 2013

NOTE: Chart not to scale.

RICHMOND TRANSITION (RIC.IRONS4): From over RIC VORTAC via RIC R-018 and DCA R-198 to IRONS INT. Thence. . . .

. . . .From over IRONS INT:

Ronald Reagan Washington National Airport (DCA only):

LANDING SOUTH: Then via DCA R-198 to SAMMO INT, heading for vectors to the final approach course.

LANDING NORTH: Expect vectors to final approach course.

All other airports: Expect vectors.

IRONS FOUR ARRIVAL

WASHINGTON, DC