

Airport information:

Country: Sudan

City: KHARTOUM

Coordinates: N 15° 36.0', E032 33.4

Elevation: 1260

Customs: Customs

Fuel: Jet A1

RFF: Avbl, CAT 9

hours: H24

Runways:

Runway 18

Takeoff length: 2980, Landing length: 2973

Runway 36

Takeoff length: 2980, Landing length: 2973

AERODROME

Khartoum TWR
119.2

CTL
127.3
125.4

AD Elev 1265 ARP: N15 35.4 E032 33.2 RFF: CAT 9B AD HR: H24

E032 32

E032 33

E032 34



1409

1356
1356

18
177°

1311

ELEV 1271

ELEV 1265

1406

1356

Apron 1

120m
393ft

Apron 2

Apron 5

1346

N15 36

A

B

C

D

E

F

G

1326

1336

Apron 3

TWR

1408

1350

THR Coordinates
RWY 18 N15 36.2 E032 33.2
RWY 36 N15 34.6 E032 33.2

Apron 4

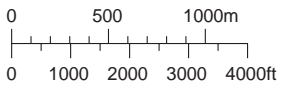
2972/45m
9750x147ft

ELEV 1260

ELEV 1266

N15 35

36
357°



VOR/DME KTM

N15 34

RWY	Slope	TORA m/ft	LDA m/ft	ALS	REDL	RCLL	Additional
18	0	2972 / 9750	2972 / 9750	H-E	H ①	15m	P 3°
36	0	2972 / 9750	2972 / 9750	H-E	H ①	15m	P 3°

① White.

STATE TAKE OFF MINIMA

RWY	Facilities	RVR	
		A B C	D
18/36	RCLL (day only) or REDL	400m	400m
	NIL (day only)	500m	500m

© Navtech - hsss01laorgo

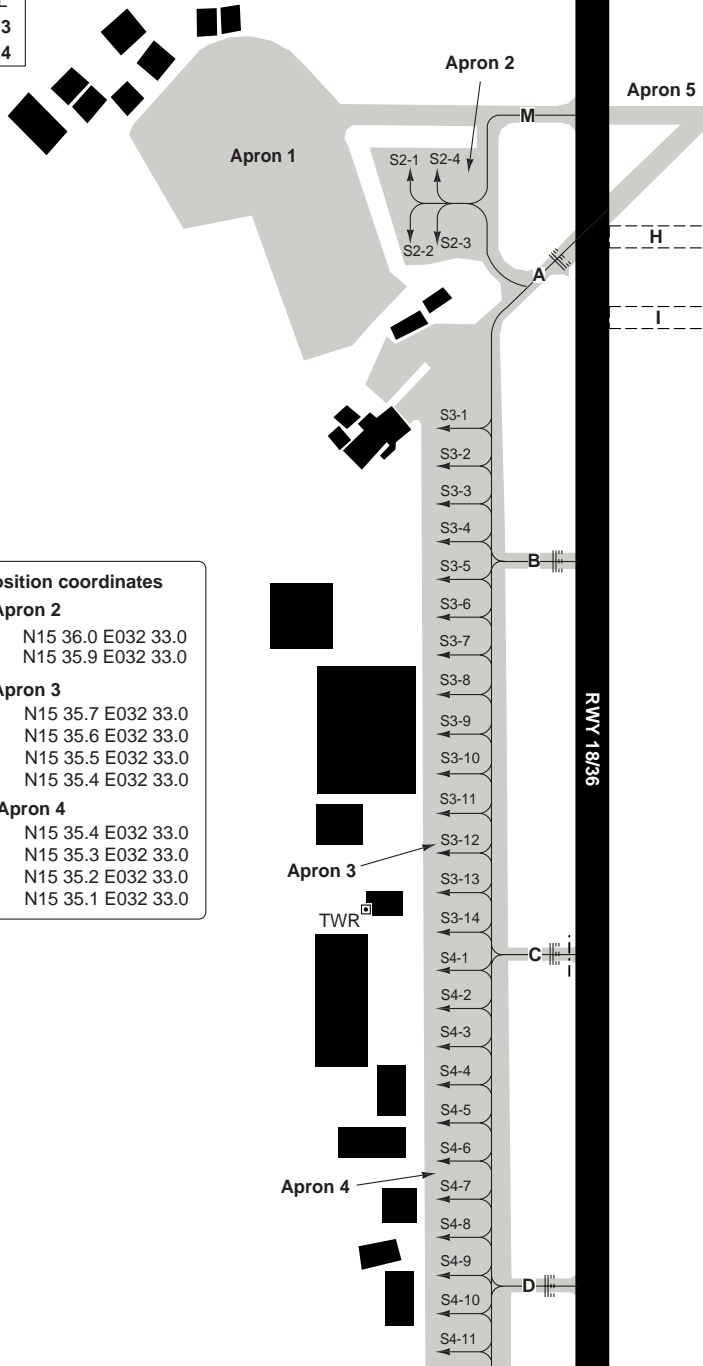
Change: AD elev, TORA, LDA, RWY length, CTL freq, Minima.

THIS CHART IS A PART OF NAVIGRAPH NDAC AND IS INTENDED FOR FLIGHT SIMULATION USE ONLY

AERODROME Parking

10 - 2

Khartoum TWR	CTL
119.2	127.3
	125.4



Parking position coordinates	
Apron 2	
S2-1, S2-4	N15 36.0 E032 33.0
S2-2, S2-3	N15 35.9 E032 33.0
Apron 3	
S3-1	N15 35.7 E032 33.0
S3-2, S3-3	N15 35.6 E032 33.0
S3-4, S3-5	N15 35.5 E032 33.0
S3-6	N15 35.4 E032 33.0
Apron 4	
S4-1, S4-2	N15 35.4 E032 33.0
S4-3 - S4-5	N15 35.3 E032 33.0
S4-6 - S4-8	N15 35.2 E032 33.0
S4-9 - S4-11	N15 35.1 E032 33.0

© Navitech - hsss02laorg0

Change: New print

THIS CHART IS A PART OF NAVIGRAPH NDAC AND IS INTENDED FOR FLIGHT SIMULATION USE ONLY

GENERAL

GENERAL

1. **WARNING**
 - 1.1. Sodium lights prior to RWY 18 are not to be confused with HIRL.
 - 1.2. Watch out for birds.
2. **NOISE ABATEMENT PROCEDURE**
ICAO standard NAP (procedure A) applies.
3. **TRAFFIC NOTES**
Overflying Khartoum city below 3300ft (2000 GND) prohibited.
4. **TWY RESTRICTION**
TWY F for light ACFT only.

ARRIVAL

1. **REVERSAL THRUST**
Use idle reverse thrust whenever possible.

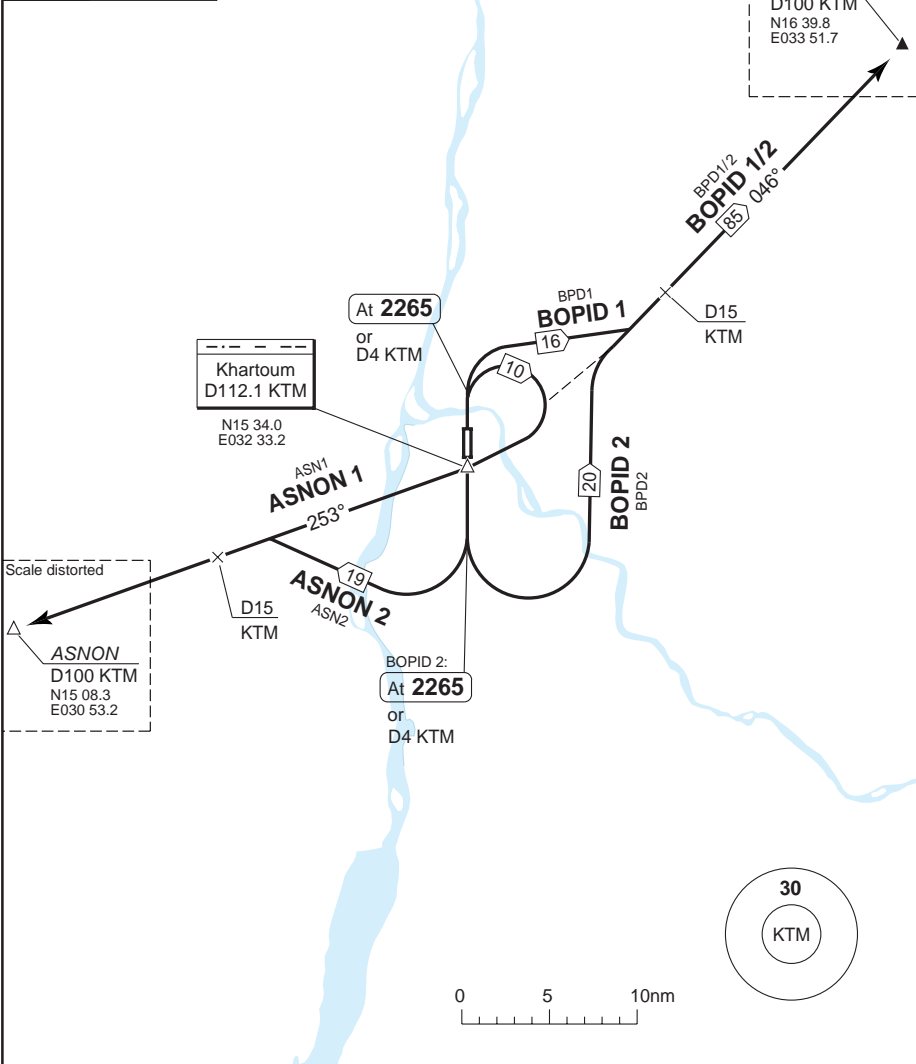
DEPARTURE

1. **START-UP**
Contact TWR 5min prior ready to start-up and give:
 - Call sign
 - REQ FL
 - Total POB
 - Fuel endurance

SID ASNON, BOPID

Khartoum TWR 119.2	APP	CTL
	118.1 124.7	127.3 125.4
TA 4000	AD Elev 1265	

Scale distorted
BOPID
D100 KTM
N16 39.8
E033 51.7



30 - 1

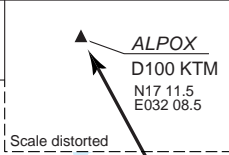
SID	RWY	Routeing
ASNON 1	36	Climb on 357° - at D4 KTM or 2265, whichever first, turn right to KTM - intcp R253 KTM - ASNON.
ASNON 2	18	After TKOF turn right - intcp R253 KTM before D15 KTM - ASNON.
BOPID 1	36	Climb on 357° - at D4 KTM or 2265, whichever first, turn right - intcp R046 KTM before D15 KTM - BOPID.
BOPID 2	18	Climb on 177° - at D4 KTM or 2265, whichever first, turn left - intcp R046 KTM before D15 KTM - BOPID.

Change: APP freq, CTL freq, AD Elev, MT

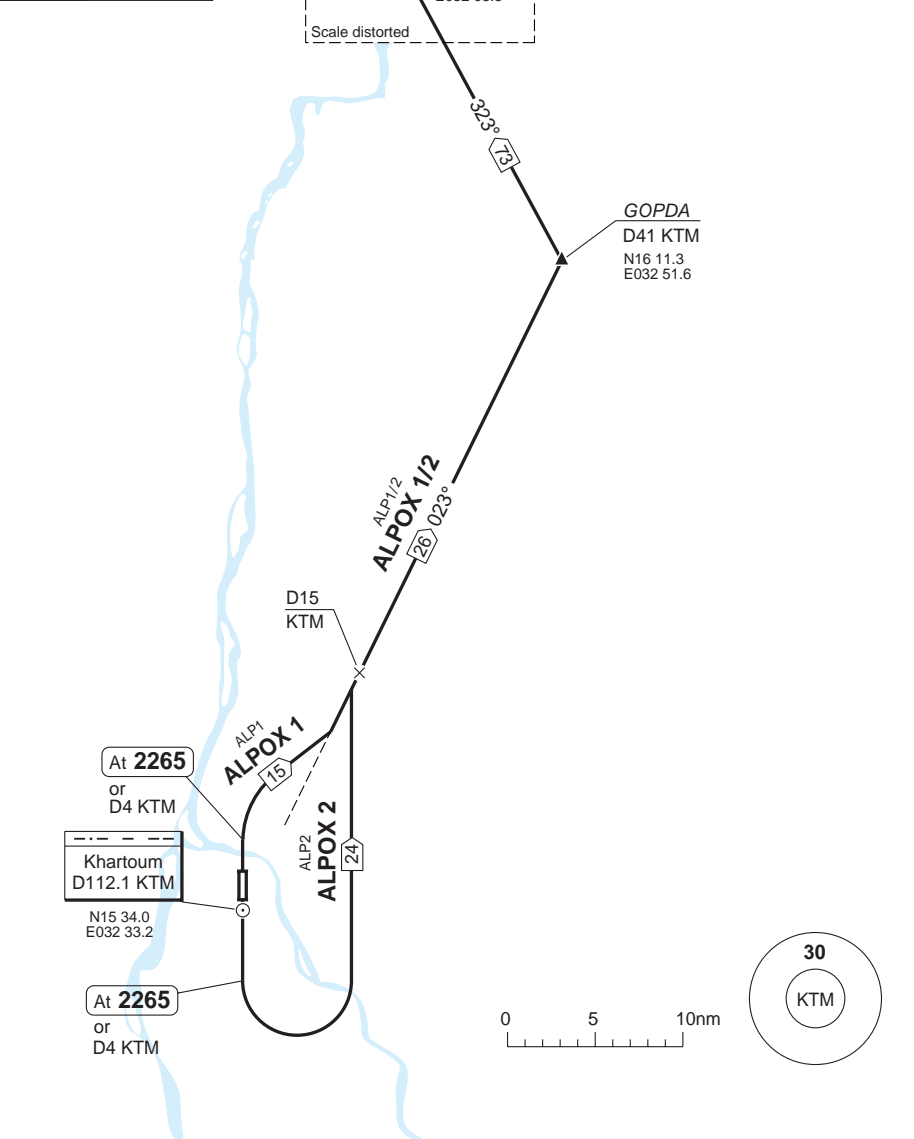
THIS CHART IS A PART OF NAVIGRAPH NDAC AND IS INTENDED FOR FLIGHT SIMULATION USE ONLY

SID ALPOX

Khartoum TWR 119.2	APP 118.1 124.7	CTL 127.3 125.4
TA 4000	AD Elev 1265	



30 - 2



SID	RWY	Routeing
ALPOX 1	36	Climb on 357° - at D4 KTM or 2265, whichever first, turn right - intcp R023 KTM before D15 KTM - GOPDA - turn left - 323° - ALPOX.
ALPOX 2	18	Climb on 177° - at D4 KTM or 2265, whichever first, turn left - intcp R023 KTM before D15 KTM - GOPDA - turn left - 323° - ALPOX.

© Navtech - hsss02daorg0

Change: APP freq, CTL freq, AD Elev, MT

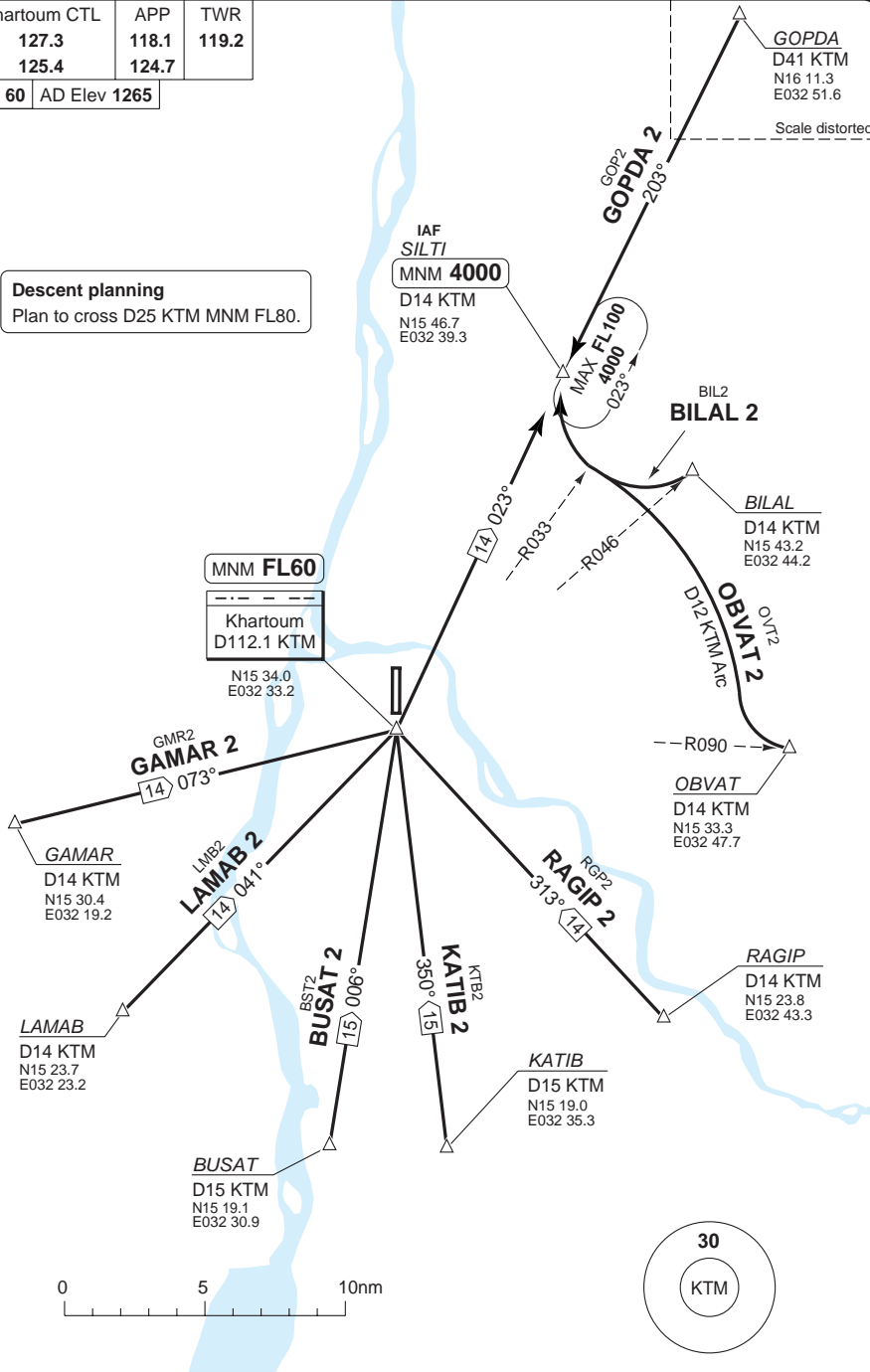
THIS CHART IS A PART OF NAVIGRAPH NDAC AND IS INTENDED FOR FLIGHT SIMULATION USE ONLY

STAR RWY 18

Khartoum CTL	APP	TWR
127.3	118.1	119.2
125.4	124.7	
TL 60	AD Elev 1265	

Descent planning

Plan to cross D25 KTM MNM FL80.



40 - 1

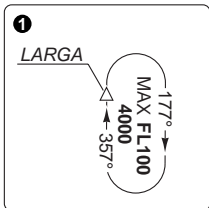
STAR RWY 36

Khartoum CTL	APP	TWR
127.3	118.1	119.2
125.4	124.7	

TL 60 AD Elev 1265

Scale distorted

GOPDA
N16 11.3
E032 51.6



Descent planning
Plan to cross D25 KTM MNM FL80.

40 - 2

GAMAR
D14 KTM
N15 30.4
E032 19.2

LAMAB
D14 KTM
N15 23.7
E032 23.2

LAMAB 1
LMB1

BUSAT
R186/D15 KTM
N15 19.1
E032 30.9

KATIB 1
KTB1

KATIB
R170/D15 KTM
N15 19.0
E032 35.3

Khartoum
D112.1 KTM

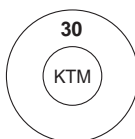
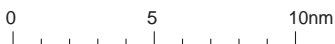
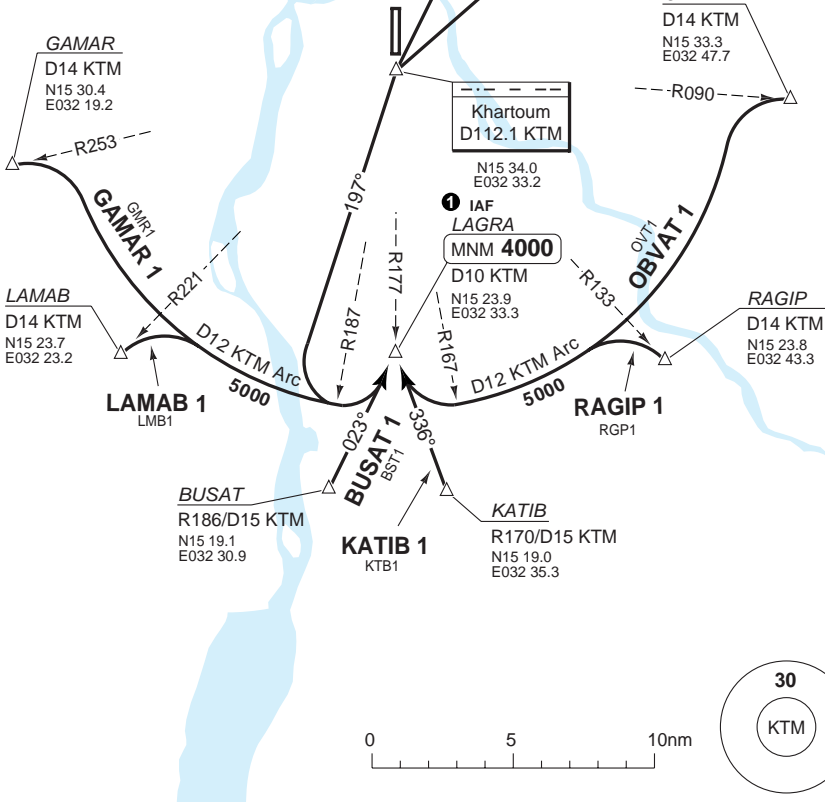
N15 34.0
E032 33.2

LAGRA
MNM 4000
D10 KTM
N15 23.9
E032 33.3

OBVAT
D14 KTM
N15 33.3
E032 47.7

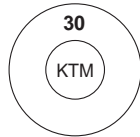
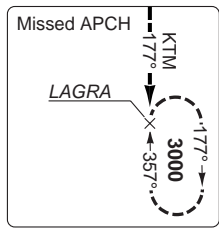
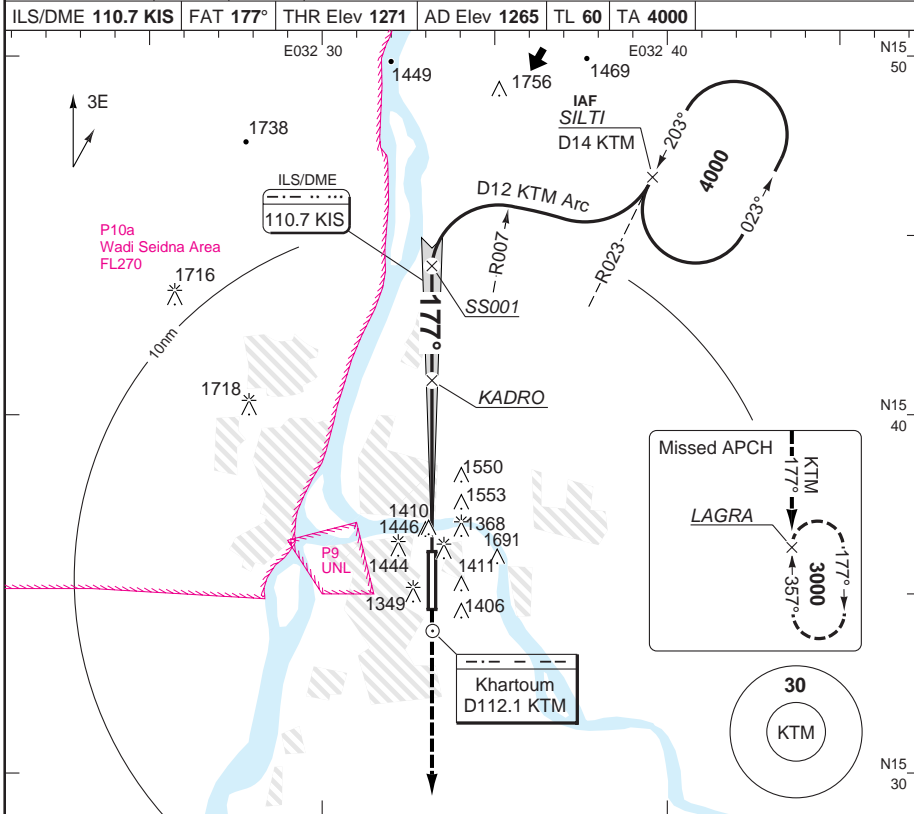
RAGIP
D14 KTM
N15 23.8
E032 43.3

RAGIP 1
RGP1

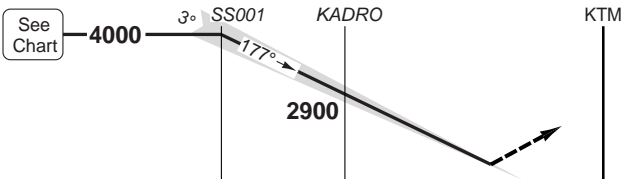


ILS RWY 18

Khartoum CTL 127.3 125.4	APP 118.1 124.7	TWR 119.2
ILS/DME 110.7 KIS	FAT 177°	THR Elev 1271 AD Elev 1265 TL 60 TA 4000



MAPt 0.6nm before THR



Climb on R177
KTM to **3000**
to LARGA and join HP.

nm 13 12 11 10 9 8 7 6 5 4 3 2 1 0

ACFT	ILS	LOC+DME
A		
B	1470 (200) 1.2km	1560 (295) 1.6km
C		
D		

Note: Circling NA
 ILS: 200ft
 LOC+DME: 300ft

DME KTM	3.0° ALT	LDA 2972x45 9750x147ft P 3°
10.5	4000	
9	3540	
8	3220	
7	2900	
6	2590	
5	2270	
4	1950	
2.8	1560	

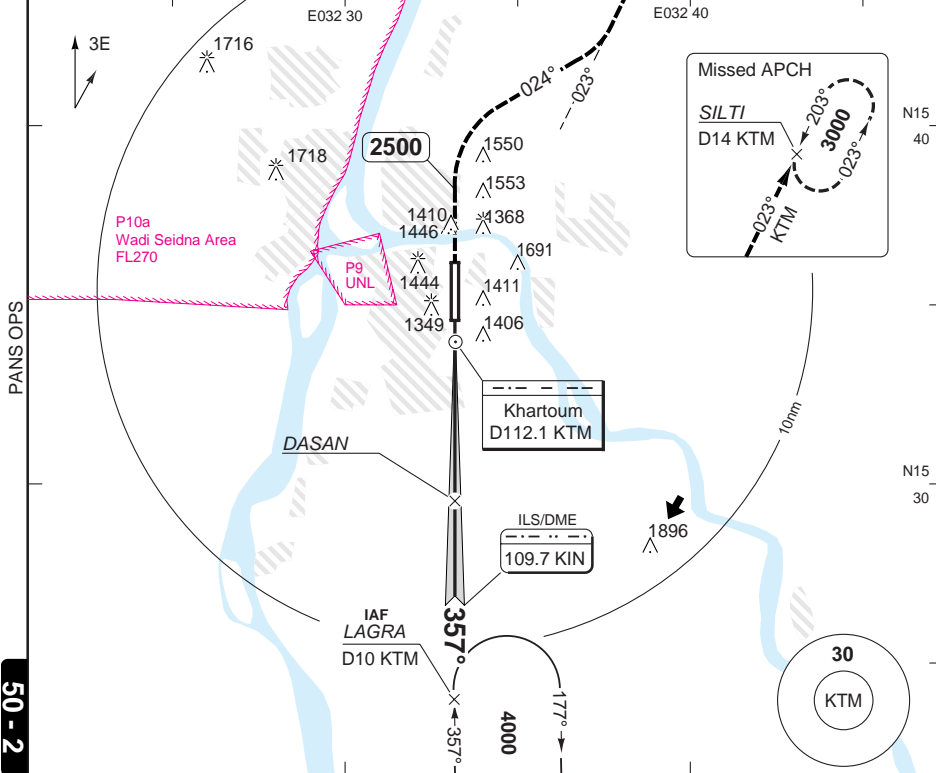
GS	80	100	120	140	160
ROD 3.0°	430	530	640	740	850

Change: APP freq, AD Elev.

ILS RWY 36

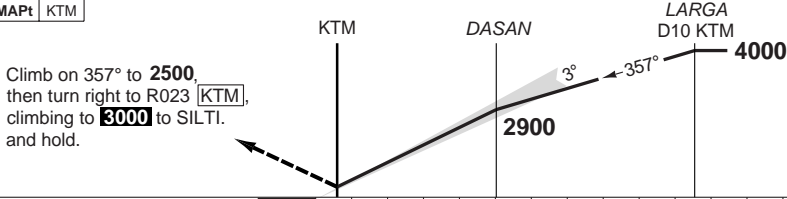
Khartoum CTL	APP	TWR
127.3	118.1	119.2
125.4	124.7	

ILS/DME 109.7 KIN FAT 357° THR Elev 1266 AD Elev 1265 TL 60 TA 4000



50 - 2

MAPt KTM



Climb on 357° to **2500**, then turn right to R023 **KTM**, climbing to **3000** to SILTI, and hold.

ACFT	ILS	LOC+DME
A		
B	1460 (200) 1.2km \triangle	1570 (310) 1.6km \triangle
C		
D		

Note: Circling NA
 \triangle ILS: 200ft
 LOC+DME: 310ft

DME KTM	3.0° ALT
8	4000
6	3390
5	3070
4	2750
3	2440
2	2120
1	1800
0.3	1570

LDA 2972x45
9750x147ft
P 3°

GS	80	100	120	140	160
ROD 3.0°	430	530	640	740	850

© Navtech - hsss02aip00

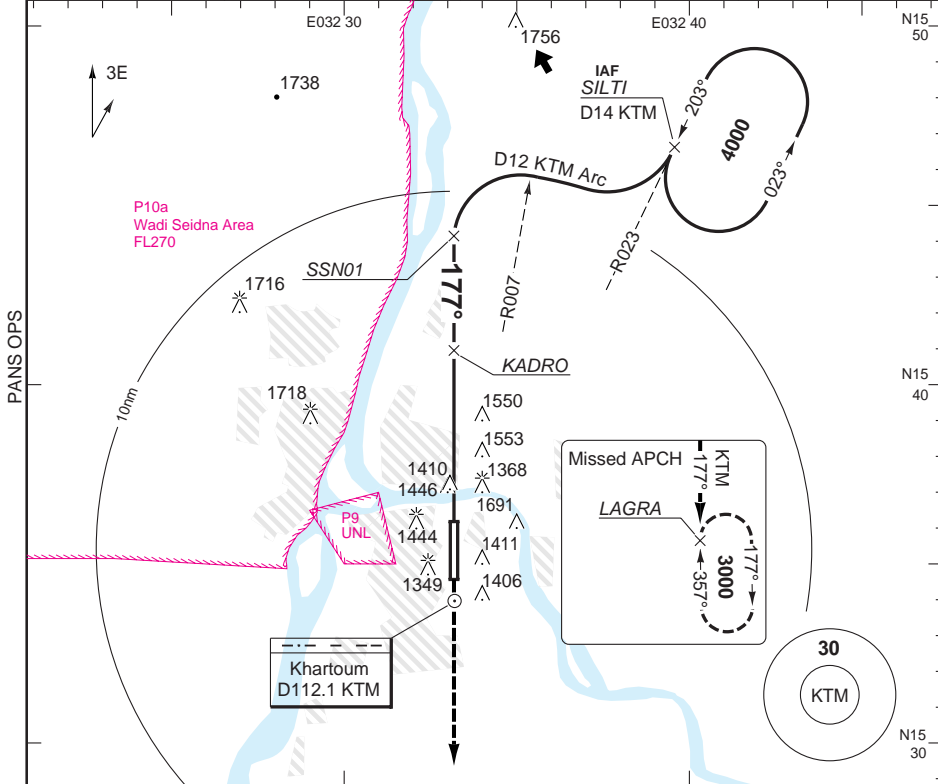
Change: APP freq, AD Elev.

THIS CHART IS A PART OF NAVIGRAPH NDAC AND IS INTENDED FOR FLIGHT SIMULATION USE ONLY

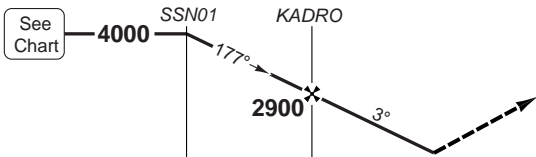
VOR RWY 18 VOR/DME

Khartoum CTL	APP	TWR				
127.3	118.1	119.2				
125.4	124.7					

VOR/DME	112.1 KTM	FAT 177°	THR Elev 1271	AD Elev 1265	TL 60	TA 4000
---------	-----------	----------	---------------	--------------	-------	---------



MAPt D2.8 KTM



Climb on R177 [KTM] to **3000** to LARGA and join HP.

nm	13	12	11	10	9	8	7	6	5	4	3	2	1	0
ACFT	VOR+DME		Circling ^a		^a West of the airport not permitted									

© Navtech - hsss03aip00

STATE					
A	1800 (535) 2.6km	1800 (535) 2.6km			
B		1950 (684) 2.6km			
C		1960 (689) 3.6km			
D					

GS	80	100	120	140	160
ROD 3.0°	430	530	640	740	850

DME KTM	3.0° ALT	LDA 2972x45 9750x147ft P 3°
10.5	4000	
9	3540	
8	3220	
7	2900	
6	2590	
5	2270	
4	1950	
3.5	1800	FALS

50 - 3

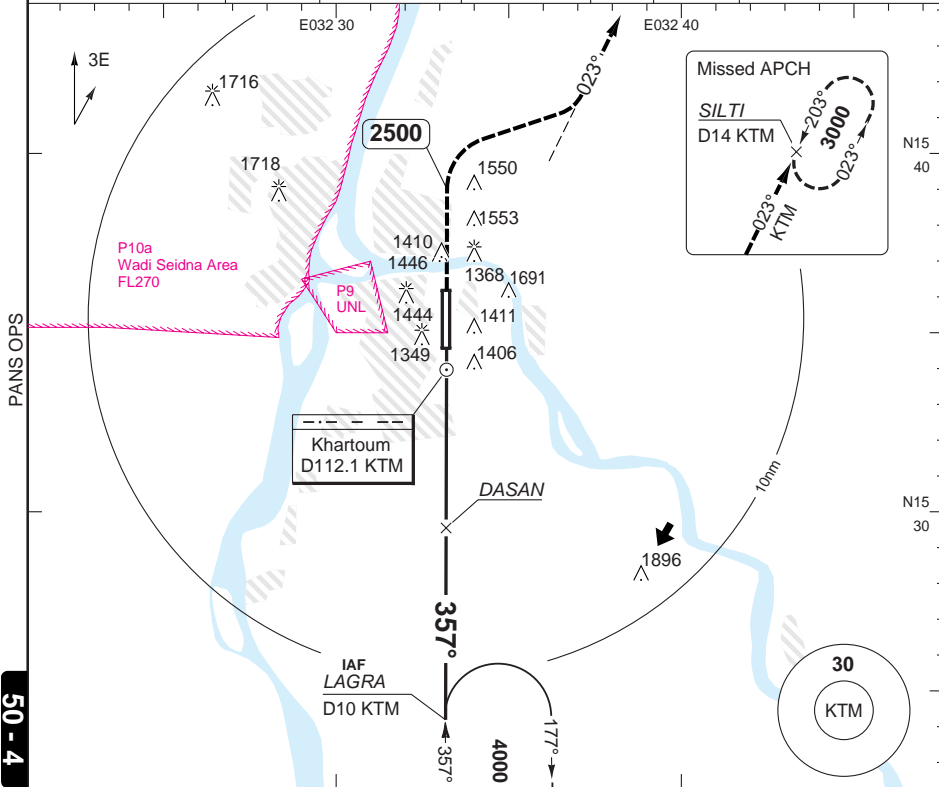
Change: APP freq, AD Elev.

THIS CHART IS A PART OF NAVIGRAPH NDAC AND IS INTENDED FOR FLIGHT SIMULATION USE ONLY

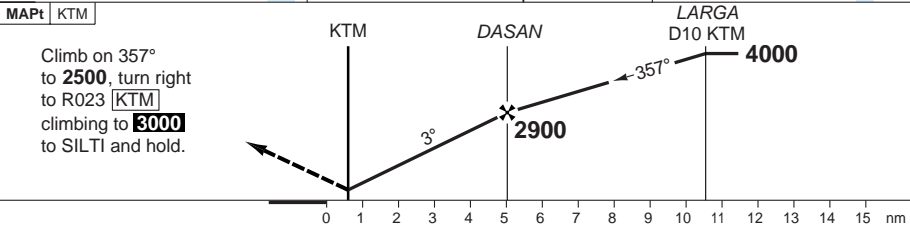
VOR RWY 36 VOR/DME

Khartoum CTL	APP	TWR				
127.3	118.1	119.2				
125.4	124.7					

VOR/DME	112.1 KTM	FAT 357°	THR Elev 1266	AD Elev 1265	TL 60	TA 4000
---------	-----------	----------	---------------	--------------	-------	---------



50 - 4



ACFT	VOR+DME	Circling a	a West of the airport not permitted					DME	3.0°	LDA 2972x45
A	1600 (340) 1.6km	1670 (402) 1.9km						KTM	ALT	9750x147ft
B		1770 (500) 2.8km						8	4000	P 3° FALS
C		1950 (684) 3.7km						6	3390	
D		1970 (700) 4.6km						5	3070	
GS		80	100	120	140	160	4	2750		
ROD 3.0°		430	530	640	740	850	3	2440		
							2	2120		
							1	1800		
							0.4	1600		

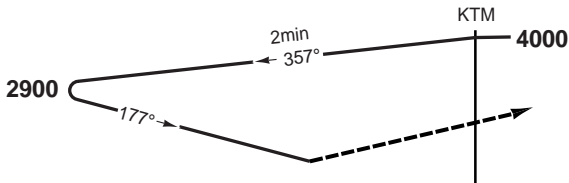
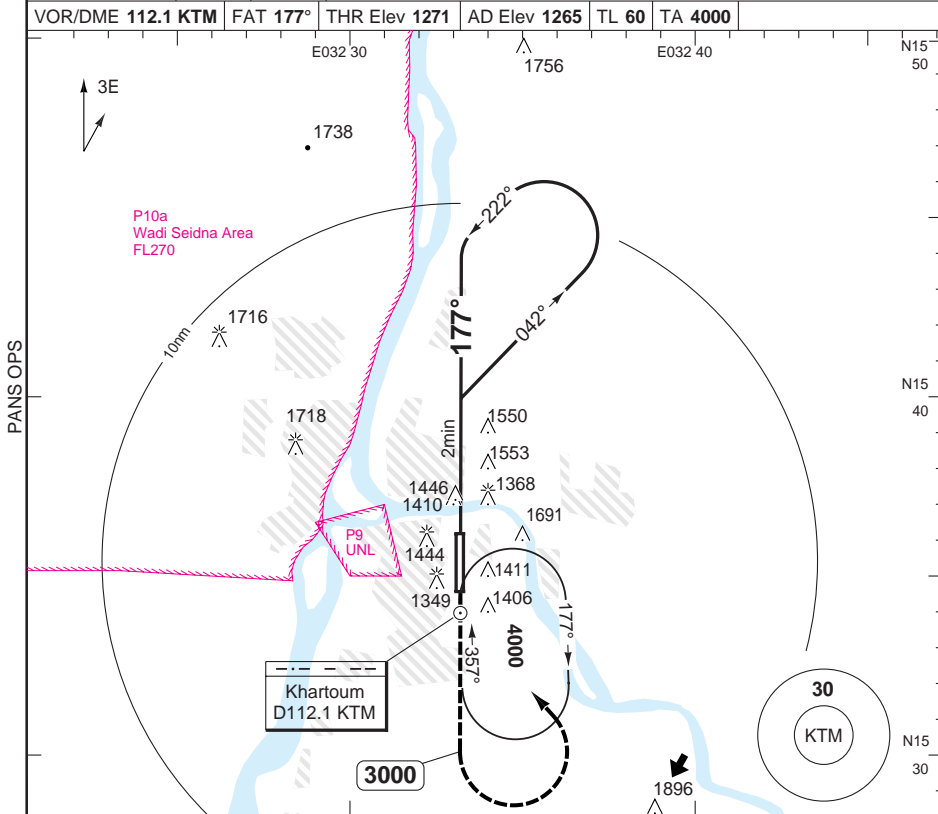
© Navtech - hsss04iaip00

Change: APP freq, AD Elev.

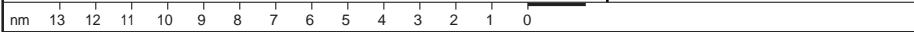
THIS CHART IS A PART OF NAVIGRAPH NDAC AND IS INTENDED FOR FLIGHT SIMULATION USE ONLY

VOR RWY 18

Khartoum CTL	APP	TWR				
127.3	118.1	119.2				
125.4	124.7					
VOR/DME 112.1 KTM	FAT 177°	THR Elev 1271	AD Elev 1265	TL 60	TA 4000	



Climb on R177
KTM to 3000,
then turn left to
KTM climbing to
4000 and join HP.



ACFT	VOR	VOR (b)	Circling (a)	Circling (a)(b)
A	2060 (795) 2.9km	2060 (795) 3.1km	2060 (795) 2.9km	2060 (795) 3.1km
B				
C	2060 (795) 3.3km	2060 (795) 3.3km	2150 (885) 2.9km	2150 (885) 3.3km
D			2150 (885) 3.6km	2150 (885) 3.6km

a West of the airport not permitted.
b Non CDFA.

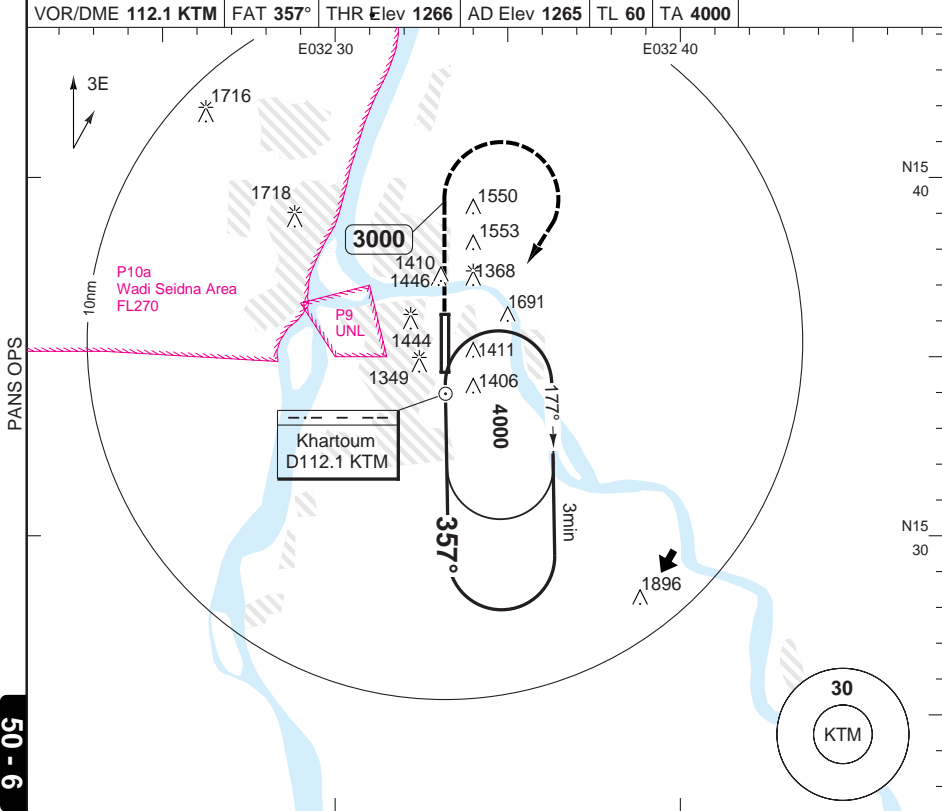
LDA 2972x45
9750x147ft
P 3°



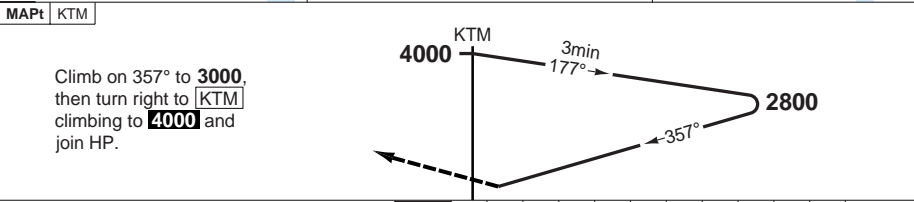
FALS

VOR RWY 36

Khartoum CTL 127.3 125.4	APP 118.1 124.7	TWR 119.2				
VOR/DME 112.1 KTM	FAT 357°	THR Elev 1266	AD Elev 1265	TL 60	TA 4000	



50 - 6



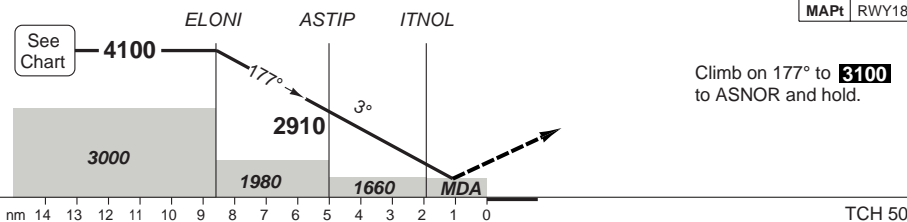
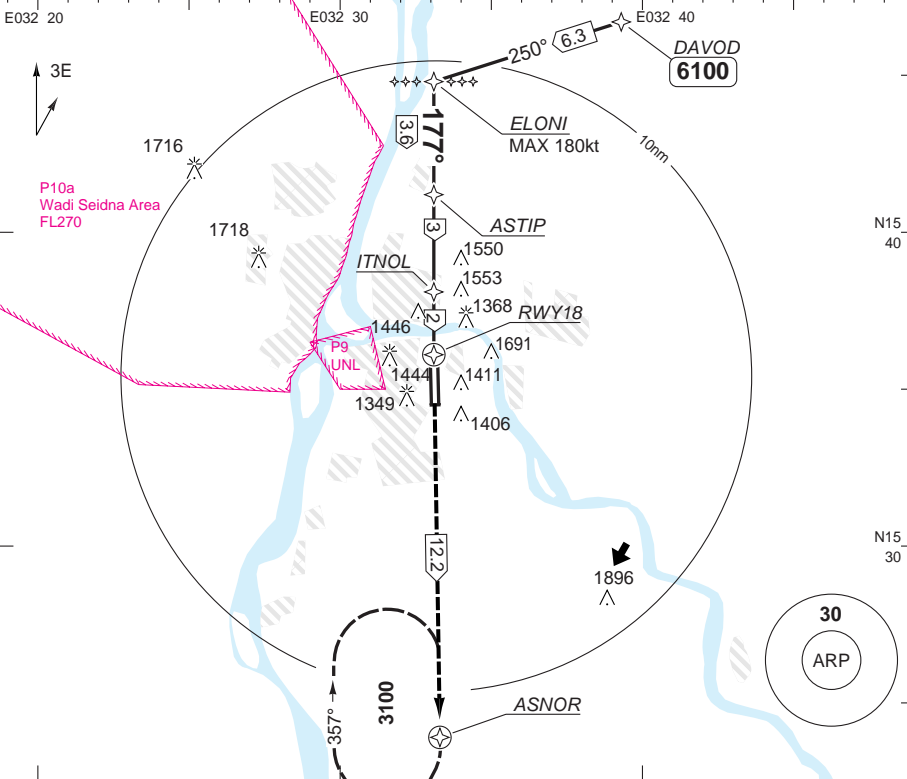
ACFT	VOR	VOR b	Circling a	Circling a b	a West of the airport not permitted b Non CDFA	LDA 2972x45 9750x147ft P 3°
A	1750 (490) 1.5km	1750 (490) 1.7km	1760 (490) 1.5km	1760 (490) 1.7km		
B			1770 (500) 1.6km	1770 (500) 1.7km		
C			1750 (490) 1.9km	1950 (684) 2.4km		
D	1970 (700) 3.6km	1970 (700) 3.6km				

© Navtech - hsss08aiap00

RNAV (GNSS) RWY 18

Khartoum CTL	APP	TWR
127.3	118.1	119.2
125.4	124.7	

RNAV	FAT 177°	THR Elev 1271	AD Elev 1265	TL 60	TA 4000
------	----------	---------------	--------------	-------	---------



ACFT	LNAV/VNAV	LNAV	Circling
A	1570 (305) 1.6km	1660 (395) 2.0km	1750 (485) 2.4km
B	1620 (355) 1.6km		1990 (725) 3.6km
C	1630 (365) 1.6km		2090 (825) 3.6km
D			2090 (825) 4.0km

LDA 2972x45
9750x147ft
P 3°

FALS

© Navtech - hsss07iaip00

50 - 7

Change: New chart.

THIS CHART IS A PART OF NAVIGRAPH NDAC AND IS INTENDED FOR FLIGHT SIMULATION USE ONLY

JAR-OPS Landing Minima

KHARTOUM

The following Minima is for Public Transport aircraft and conforms to JAR-OPS1 regulations.

STRAIGHT-IN APPROACH		C				D			
R/W	Procedure	DA/ MDA QNH ft	DH/ MDH QFE ft	Vis m	Vis No ALS m	DA/ MDA QNH ft	DH/ MDH QFE ft	Vis m	Vis No ALS m
18	ILS/DME	1470	200	800	1000	1470	200	800	1000
18	LOC/DME	1560	300	1400	1600	1560	300	1600	1800
18	VOR/DME	1800	540	1800	2000	1800	540	2000	2000
18	VOR	2060	800	2000	2000	2060	800	2000	2000
36	ILS/DME	1460	200	800	1000	1460	200	800	1000
36	LOC/DME	1570	310	1600	1800	1570	310	1800	2000
36	VOR/DME	1600	340	1600	1800	1600	340	1800	2000
36	VOR	1750	490	1800	2000	1750	490	2000	2000

Notes:

CIRCLING		C			D		
R/W	Procedure	MDA QNH ft	MDH QFE ft	Vis m	MDA QNH ft	MDH QFE ft	Vis m
18	VOR/DME (1)	1950	690	3200	1960	700	3600
18	VOR (1)	2150	890	4400	2150	890	4800
36	VOR/DME (1)	1950	690	3200	1960	700	3600
36	VOR (1)	1950	690	3200	1960	700	3600

Notes:

(1) Not authorised west of aerodrome.

TAKE-OFF		C		D	
Runway	Facilities	RVR	Vis	RVR	Vis
18/36 (1)(2)	RCLL or REDL	250	-	300	-
18/36 (2)	RCLL or REDL	400	-	400	-
18/36	Nil (Day only)	500	-	500	-

Notes:

(1) LVP must be in force.

(2) RCLL for HJ use only.

JAR-OPS Landing Minima

KHARTOUM

The following Minima is for Public Transport aircraft and conforms to JAR-OPS1 regulations.

STRAIGHT-IN APPROACH		A				B			
R/W	Procedure	DA/ MDA QNH ft	DH/ MDH QFE ft	Vis m	Vis No ALS m	DA/ MDA QNH ft	DH/ MDH QFE ft	Vis m	Vis No ALS m
18	ILS/DME	1470	200	800	1000	1470	200	800	1000
18	LOC/DME	1560	300	1200	1500	1560	300	1300	1500
18	VOR/DME	1800	540	1500	1500	1800	540	1500	1500
18	VOR	2060	800	1500	1500	2060	800	1500	1500
36	ILS/DME	1460	200	800	1000	1460	200	800	1000
36	LOC/DME	1570	310	1300	1500	1570	310	1400	1500
36	VOR/DME	1600	340	1300	1500	1600	340	1400	1500
36	VOR	1750	490	1500	1500	1750	490	1500	1500

Notes:

CIRCLING		A			B		
R/W	Procedure	MDA QNH ft	MDH QFE ft	Vis m	MDA QNH ft	MDH QFE ft	Vis m
18	VOR/DME (1)	1800	540	1600	1800	540	1600
18	VOR (1)	2060	800	1600	2060	800	2000
36	VOR/DME (1)	1670	410	1600	1760	500	1600
36	VOR (1)	1750	490	1600	1760	500	1600

Notes:

(1) Not authorised west of aerodrome.

TAKE-OFF		A		B	
Runway	Facilities	RVR	Vis	RVR	Vis
18/36 (1)(2)	RCLL or REDL	250	-	250	-
18/36 (2)	RCLL or REDL	400	-	400	-
18/36	Nil (Day only)	500	-	500	-

Notes:

(1) LVP must be in force.

(2) RCLL for HJ use only.