

Airport information:

Country: Kenya

City: MOMBASA

Coordinates: S 04 01.7, E039 35.9

Elevation: 199

Customs: Customs

Fuel: 100LL, Jet A1

RFF: CAT 9

hours: H24

Runways:

Runway 03

Takeoff length: 3356, Landing length: 3356

Runway 15

Takeoff length: 1359, Landing length: 1359

Runway 21

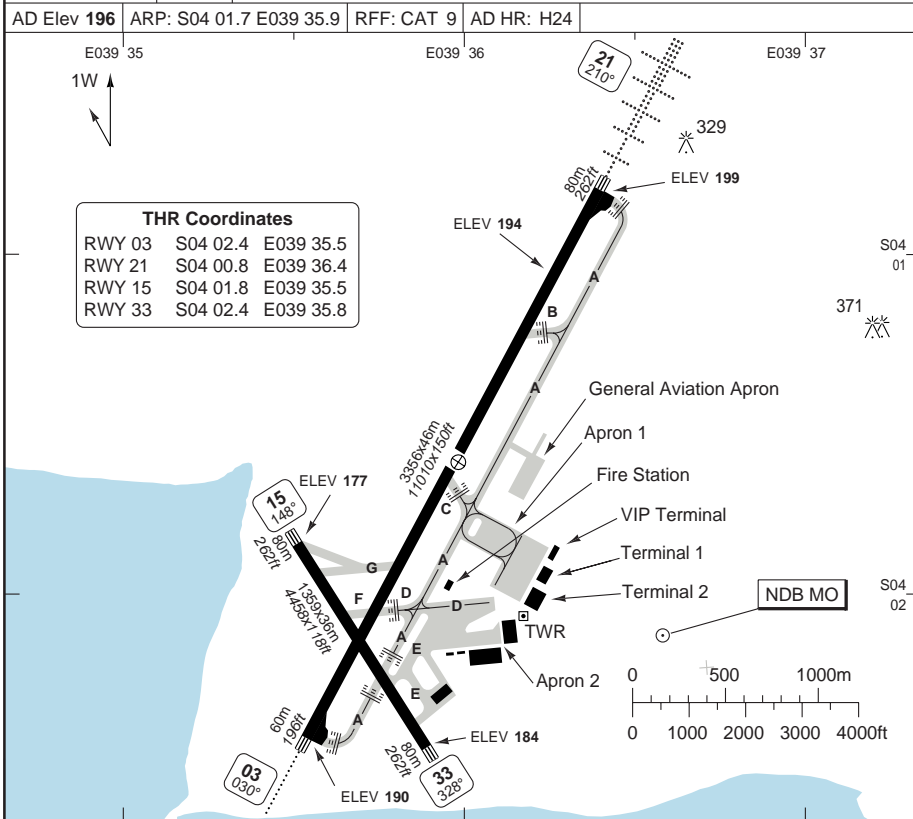
Takeoff length: 3356, Landing length: 3356

Runway 33

Takeoff length: 1359, Landing length: 1359

AERODROME

Mombasa APN 121.6	TWR 118.6
AD Elev 196	ARP: S04 01.7 E039 35.9
RFF: CAT 9	AD HR: H24



RWY	Slope	TORA m/ft	LDA m/ft	ALS	REDL	Additional
03	+0.1	3356 / 11010	3356 / 11010	L-E ①	L ②	P 3° (30)
21	-0.1	3356 / 11010	3356 / 11010	H-C	H ②	P 3° (69)
15	+0.2	1359 / 4459	1359 / 4459	-	-	-
33	-0.2	1359 / 4459	1359 / 4459	-	-	-

① 600m. ② White.

EU OPS TAKE OFF MINIMA

RWY	Facilities	RVR			
		A	B	C	D
All	RCL (day only) or RCL + REDL	400m			
	NIL (day only)	500m			

© Navtech - hkmo01laorg0

Change: New print.

THIS CHART IS A PART OF NAVIGRAPH NDAC AND IS INTENDED FOR FLIGHT SIMULATION USE ONLY

AERODROME PARKING

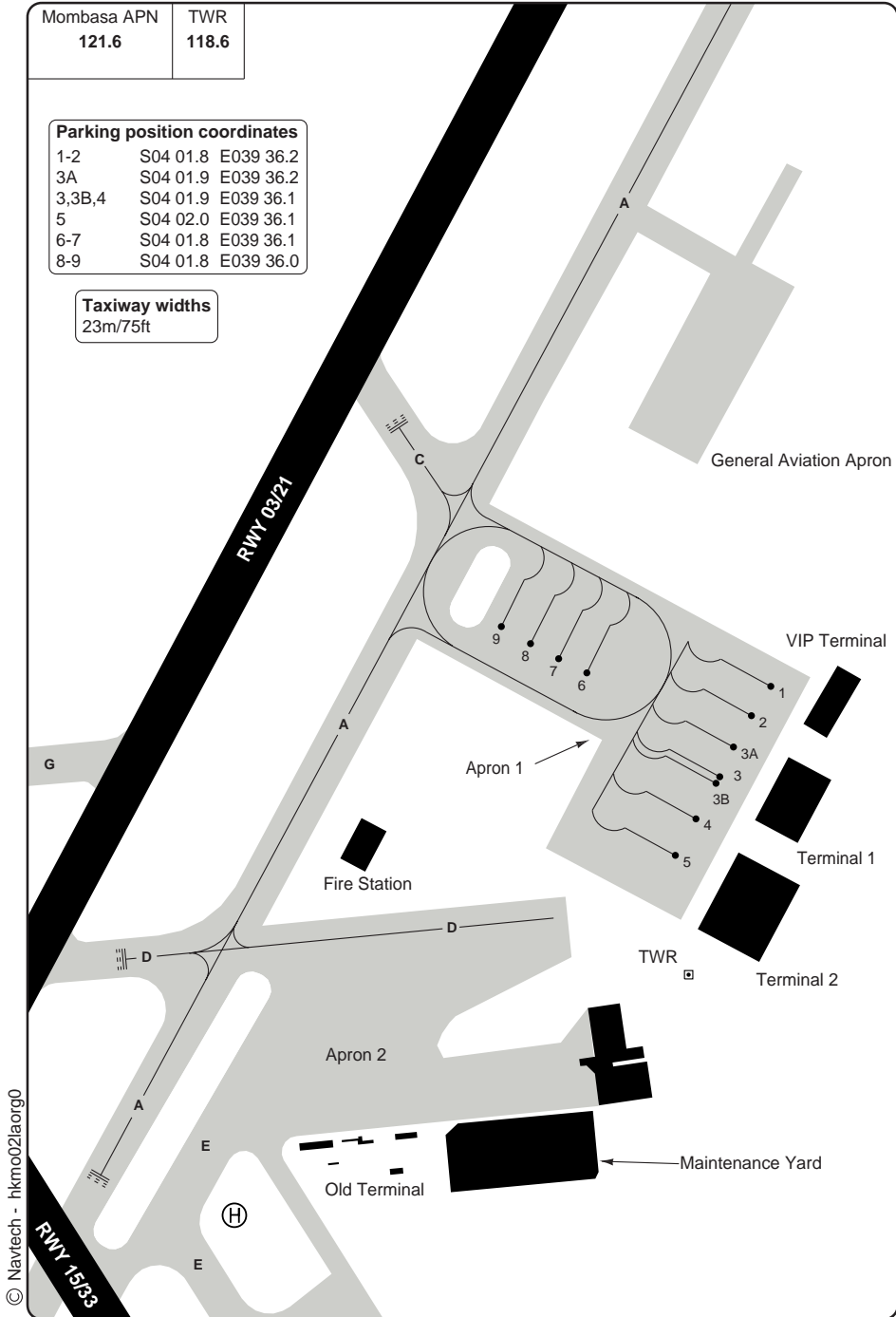
Mombasa APN	TWR
121.6	118.6

Parking position coordinates

1-2	S04 01.8	E039 36.2
3A	S04 01.9	E039 36.2
3,3B,4	S04 01.9	E039 36.1
5	S04 02.0	E039 36.1
6-7	S04 01.8	E039 36.1
8-9	S04 01.8	E039 36.0

Taxiway widths

23m/75ft



© Navitech - hkmo02laorg0
RWY 15/33

Change: New print.

GENERAL**GENERAL****1. WARNING**

- 1.1 Bird Hazard.
- 1.2 Runway 03/21: Slight bumps 0-900m from threshold 21 and numerous ditches on whole runway.
- 1.3 Runway 33: Exercise extreme caution due to obstruction of tower's view for a distance of 260m from threshold.
- 1.4 Trees in vicinity of aerodrome.

2. TRAFFIC NOTES

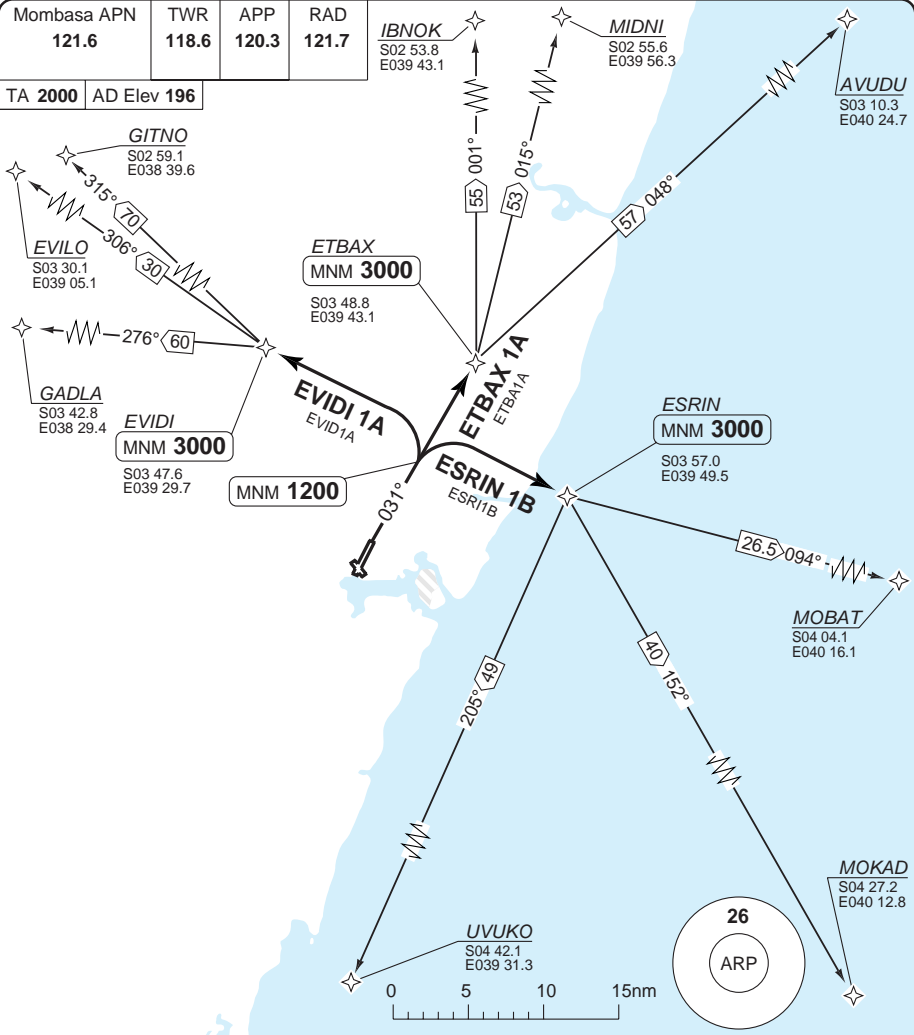
- 2.1 Avoid overflying State House, HK P7.
- 2.2 Right hand traffic circuit Runway 15/33.
Left hand traffic circuit Runway 03/21.
- 2.3 Minimum circuit alt 2000ft.
- 2.4 Aircraft with AEW 49t or above are not permitted to execute 180° turns on Runway 03/21.

3. SPEED

Max speed 280kt.

SID RWY 03 **RNAV** GNSS

Moi INTL **MOMBASA**



SID	Routeing	Altitudes
ESRIN 1B	Climb on 031° - at 1200 turn right to ESRIN - Follow Transition	ESRIN MNM 3000
ETBAX 1A	Climb on 031° - at 1200 proceed to ETBAX - Follow Transition	ETBAX MNM 3000
EVIDI 1A	Climb on 031° - at 1200 turn left to EVIDI - Follow Transition	EVIDI MNM 3000

© Navtech - hkmo01daorg0

Change: Tracks, distances

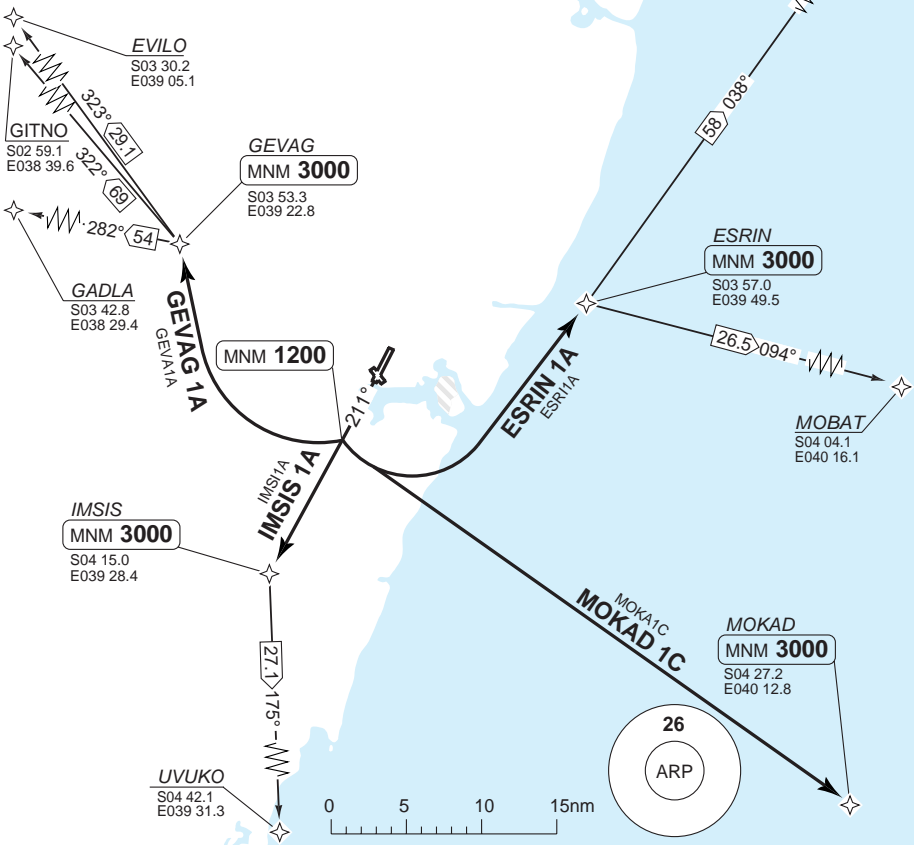
THIS CHART IS A PART OF NAVIGRAPH NDAC AND IS INTENDED FOR FLIGHT SIMULATION USE ONLY

SID RWY 21 **RNAV** GNSS

Moi INTL **MOMBASA**

Mombasa APN 121.6	TWR 118.6	APP 120.3	RAD 121.7
-----------------------------	---------------------	---------------------	---------------------

TA **2000** AD Elev **196**



SID	Routeing	Altitudes
ESRIN 1A	Climb on 211° - at 1200 turn left to ESRIN - follow transition	ESRIN MNM 3000
GEVAG 1A	Climb on 211° - at 1200 turn right to GEVAG - follow transition	GEVAG MNM 3000
IMISIS 1A	Climb on 211° - at 1200 proceed to IMSIS - follow transition	IMISIS MNM 3000
MOKAD 1C	Climb on 211° - at 1200 turn left to MOKAD - follow transition	MOKAD MNM 3000

© Navtech - hkmo02daorg0

Change: Tracks, radials

THIS CHART IS A PART OF NAVIGRAPH NDAC AND IS INTENDED FOR FLIGHT SIMULATION USE ONLY

STAR RWY 03 **RNAV** GNSS North, South

Moi INTL **MOMBASA**

Mombasa RAD 121.7	APP 120.3	TWR 118.6	APN 121.6
----------------------	--------------	--------------	--------------

TL 30 AD Elev 196

IBNOK
S02 53.8
E039 43.1

MIDNI
S02 55.6
E039 56.3

GITNO
S02 59.1
E038 39.6

Note: Initial approach MNM ENR FL40

IBNOK 1B
195°
IBNO1B

MIDNI 1B
205°
MIDN1B

GITNO 1B
149°
GITN1B

GADLA
S03 42.8
E038 29.4

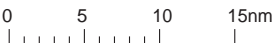
GADLA 1B
118°
GADL1B

IAF GENIL
S04 10.7
E039 23.5

IAF EPLAX
S04 19.0
E039 25.5

UVUKO 1B
350°
UVUK1B

UVUKO
S04 42.1
E039 31.3



© Navitech - hkmo01aaorg0

Change: New print.

THIS CHART IS A PART OF NAVIGRAPH NDAC AND IS INTENDED FOR FLIGHT SIMULATION USE ONLY

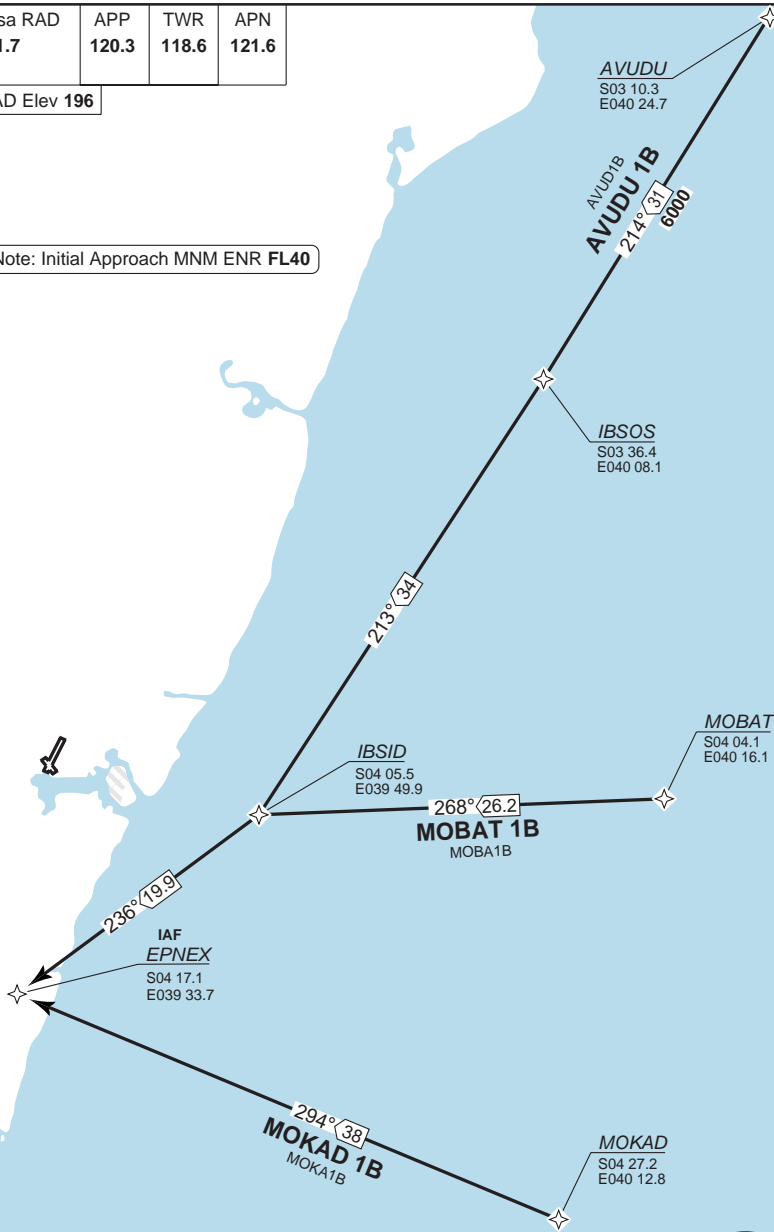
STAR RWY 03 **RNAV** GNSS East

Moi INTL MOMBASA

Mombasa RAD 121.7	APP 120.3	TWR 118.6	APN 121.6
----------------------	--------------	--------------	--------------

TL 30 AD Elev 196

Note: Initial Approach MNM ENR FL40



AVUDU
S03 10.3
E040 24.7

AVUDU 1B
214°/37
6000

IBSOS
S03 36.4
E040 08.1

IBSID
S04 05.5
E039 49.9

MOBAT 1B
MOBA1B
268°/26.2

MOBAT
S04 04.1
E040 16.1

IAF EPNEX
S04 17.1
E039 33.7

MOKAD 1B
MOKA1B
294°/38

MOKAD
S04 27.2
E040 12.8

© Navitech - hkmo02aorg0



26
ARP

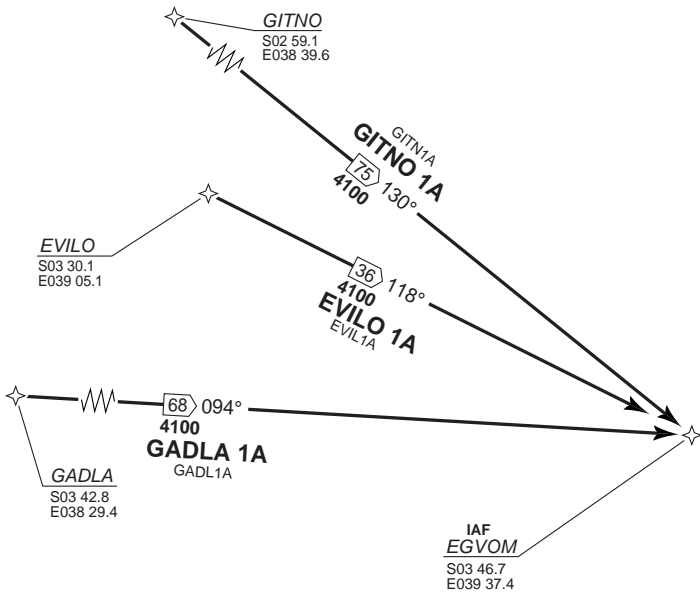
Change: New print.

STAR RWY 21 **RNAV** GNSS West

Moi INTL MOMBASA

Mombasa RAD 121.7	APP 120.3	TWR 118.6	APN 121.6
----------------------	--------------	--------------	--------------

TL 30 AD Elev 196

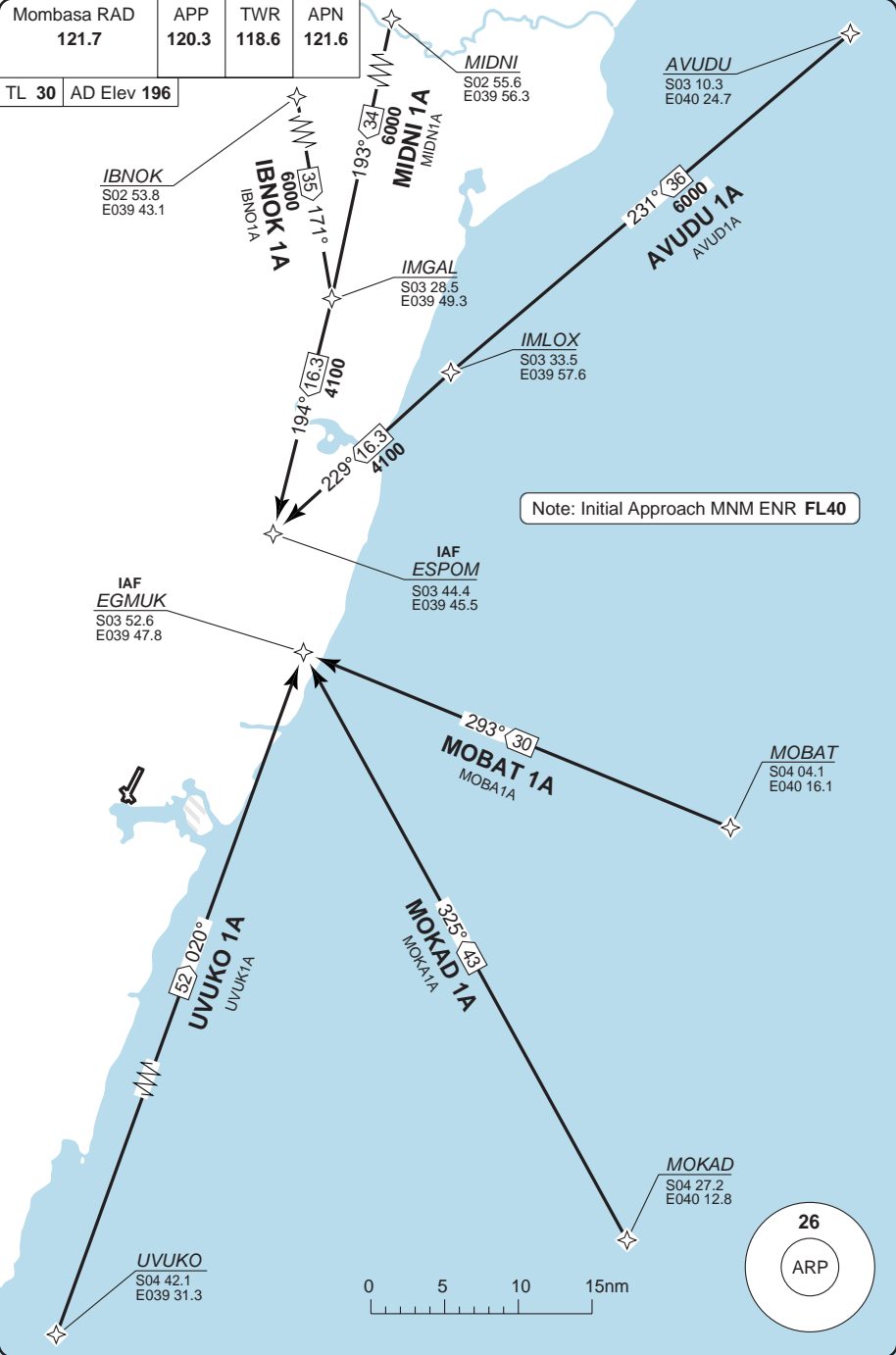


STAR RWY 21 **RNAV** GNSS North, South

Moi INTL **MOMBASA**

Mombasa RAD 121.7	APP 120.3	TWR 118.6	APN 121.6
----------------------	--------------	--------------	--------------

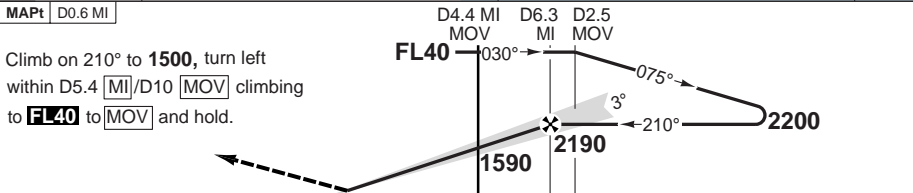
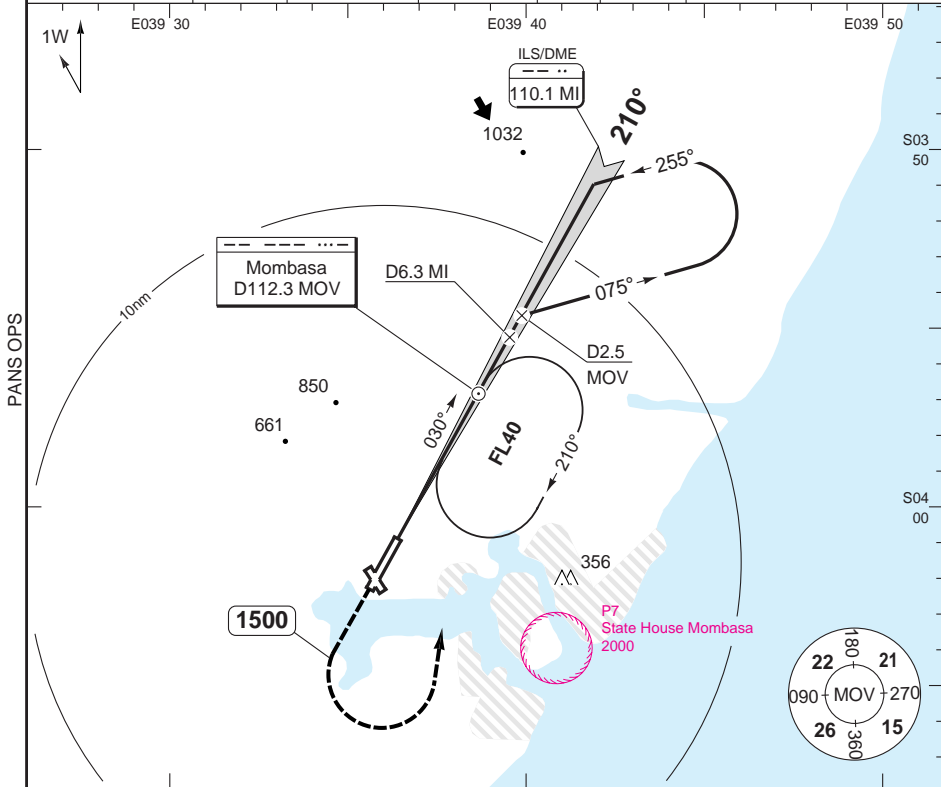
TL 30	AD Elev 196
-------	-------------



ILS RWY 21

Mombasa RAD 121.7	APP 120.3	TWR 118.6	APN 121.6
-----------------------------	---------------------	---------------------	---------------------

ILS/DME 110.1 MI	FAT 210°	THR Elev 199	AD Elev 196	TL 30	TA 2000
-------------------------	-----------------	---------------------	--------------------	--------------	----------------



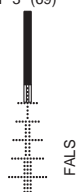
TCH 50

	0	1	2	3	4	5	6	7	8	9	10	11	12	13	14	15	nm
--	---	---	---	---	---	---	---	---	---	---	----	----	----	----	----	----	----

ACFT	ILS	LOC+DME					Circling										
A						1060 (859) 1.5km											
B	400 (200) 550m		450 (250) 750m			1060 (859) 1.6km											
C						1060 (859) 2.4km											
D						1060 (859) 3.6km											
GS	80	100	120	140	160												
ROD 3.0°	420	530	640	740	850												
FAF-MAPt	4:39	3:43	3:06	2:40	2:19												

DME MOV	3.0° ALT	DME MI	3.0° ALT	LDA 3356x46 11010x150ft P 3° (69)
1	1910	6	2090	
0	1590	5	1770	
1	1270	4	1450	
2	960	3	1140	
3	640	2	820	
		1	500	

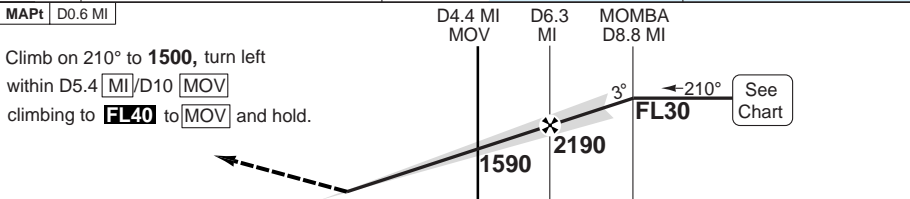
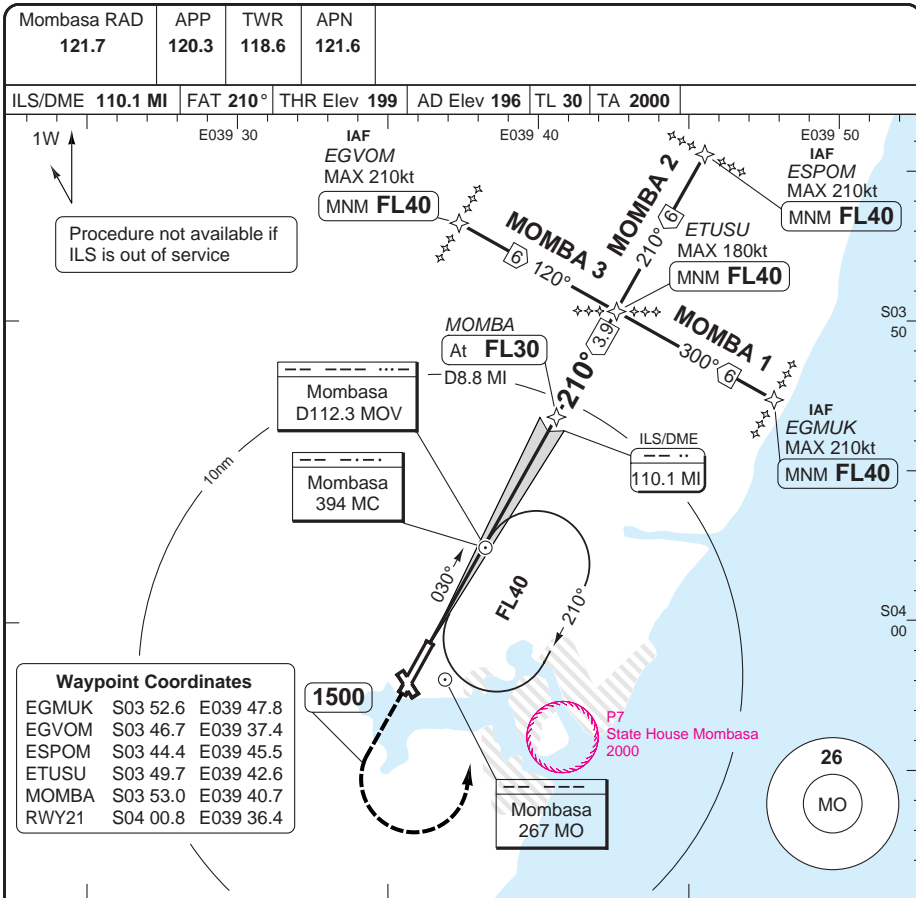
© Navtech - hkmo01iapo00
EU OPS



Change: Minima.

ILS RWY 21 RNAV transition

Moi INTL MOMBASA



TCH 50 0 1 2 3 4 5 6 7 8 9 10 11 12 13 14 15 nm

ACFT	ILS	LOC+DME		Circling		
A	400 (200) 550m	450 (250) 750m	1060 (859) 1.5km			
B			1060 (859) 1.6km			
C			1060 (859) 2.4km			
D			1060 (859) 3.6km			
GS	80	100	120	140	160	
ROD 3.0°	420	530	640	740	850	
FAF-MAPT	4:39	3:43	3:06	2:40	2:19	

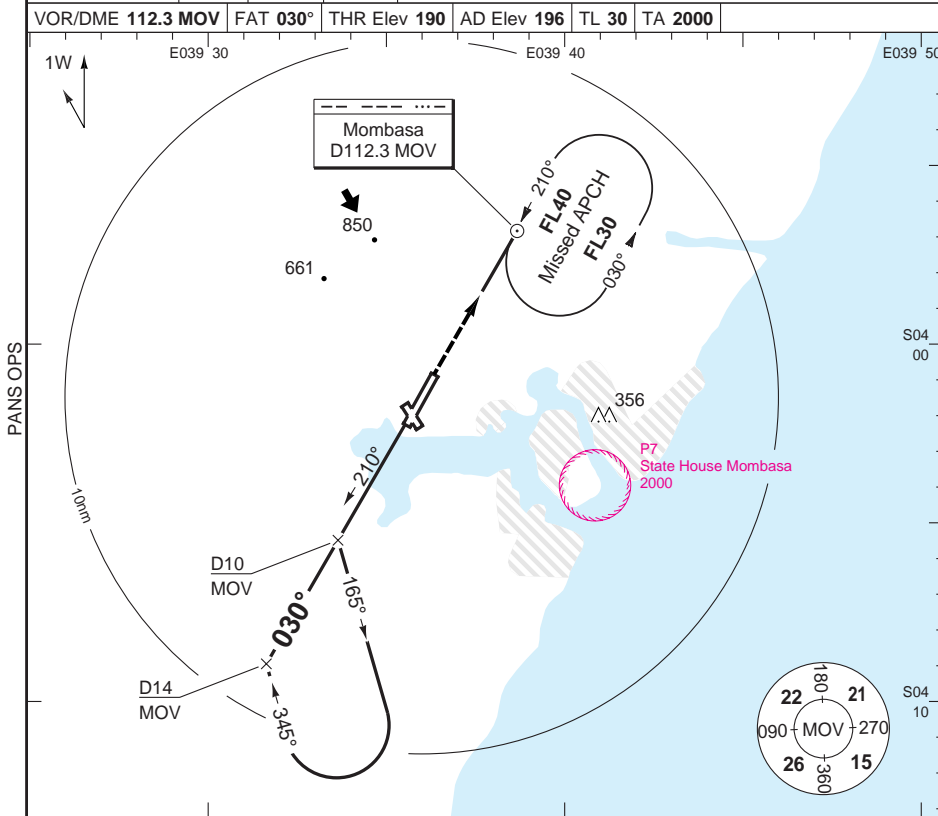
DME	3.0° ALT	DME	3.0° ALT	LDA 3356x46 11010x150ft P 3° (69)
MOV	1910	6	2090	
1	1590	5	1770	
2	1270	4	1450	
3	960	3	1140	
	640	2	820	
		1	500	

© Navtech - hkmo02iaip00

Change: Minima.

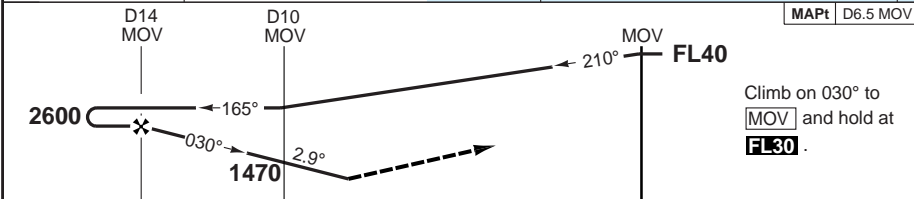
VOR RWY 03

Mombasa RAD 121.7	APP 120.3	TWR 118.6	APN 121.6	
VOR/DME 112.3 MOV	FAT 030°	THR Elev 190	AD Elev 196	TL 30 TA 2000



PANS OPS

MAPt D6.5 MOV



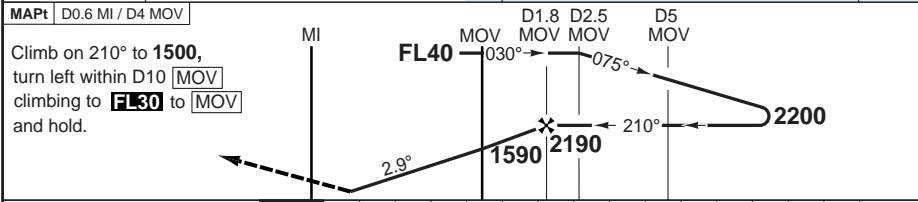
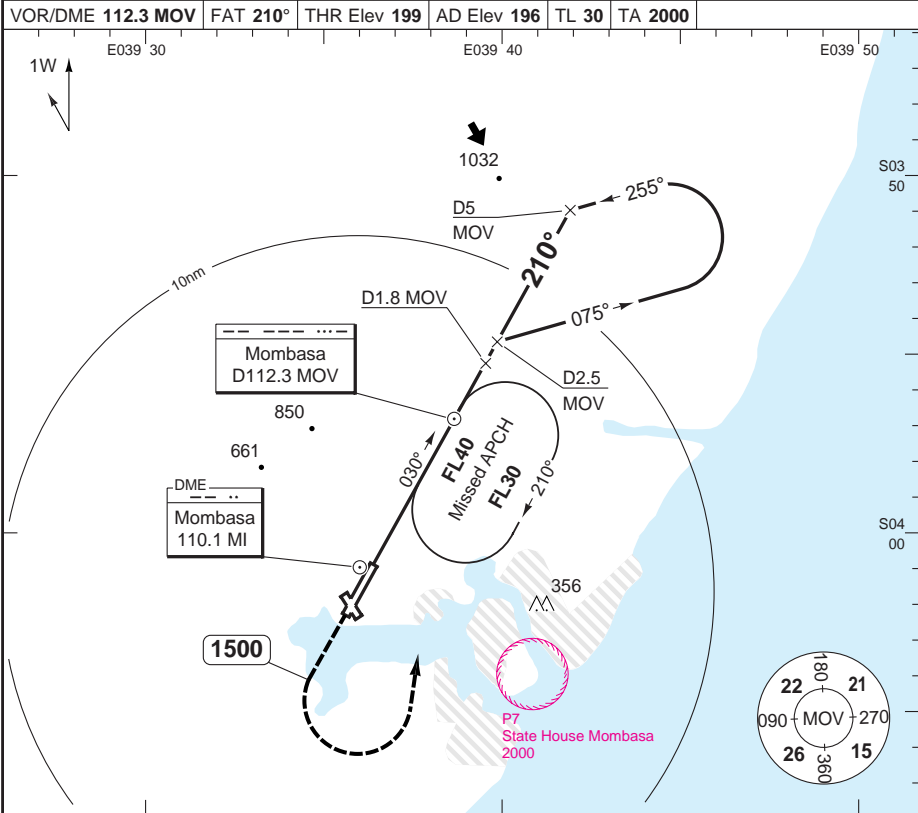
ACFT	VOR+DME	Circling	DME MOV	2.9° ALT	LDA 3356x46 11010x150ft P 3° (30)	
A	620 (424) 1500m	1060 (850) 1.5km	13	2390		
B		1060 (850) 1.6km	12	2080		
C	620 (424) 1800m	1060 (850) 2.4km	11	1770		
D		1060 (850) 3.6km	10	1470		
			9	1160		
			8	850		
GS	80	100	120	140		160
ROD 2.9°	410	510	620	720		820

© Navtech - hkmo03iapo00
EU OPS

BALS

VOR RWY 21

Mombasa RAD 121.7	APP 120.3	TWR 118.6	APN 121.6	
VOR/DME 112.3 MOV	FAT 210°	THR Elev 199	AD Elev 196	TL 30 TA 2000



MAPt	D0.6 MI / D4 MOV				
Climb on 210° to 1500, turn left within D10 MOV climbing to FL30 to MOV and hold.					
ACFT	VOR+DME	Circling	DME MOV	2.9° ALT	LDA 3356x46 11010x150ft P 3° (69)
A	650 (450) 1400m	1060 (850) 1.5km	1	1940	
B		1060 (850) 1.6km	0	1630	
C		1060 (850) 2.4km	1	1310	
D		1060 (850) 3.6km	2	1000	
			3	690	
GS	80	100	120	140	160
ROD 2.9°	410	510	620	720	820

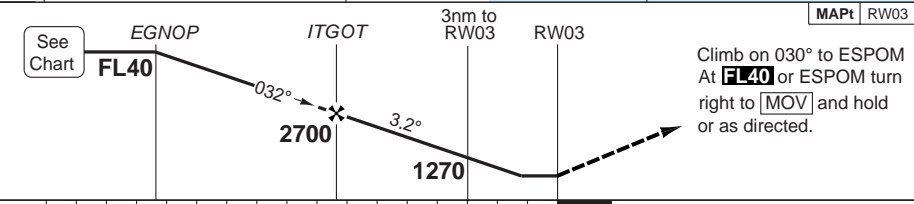
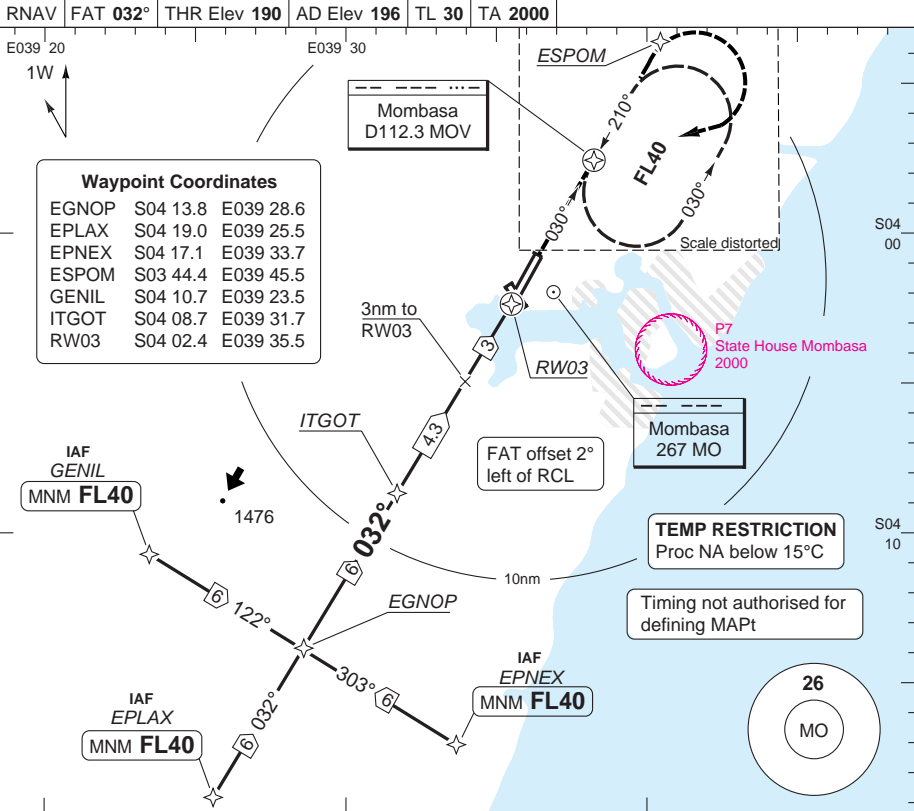
© Navtech - hkmo04iapo00
EU OPS

Change: Minima.

THIS CHART IS A PART OF NAVIGRAPH NDAC AND IS INTENDED FOR FLIGHT SIMULATION USE ONLY

RNAV (GNSS) RWY 03

Mombasa RAD 121.7	APP 120.3	TWR 118.6	APN 121.6	
RNAV	FAT 032°	THR Elev 190	AD Elev 196	TL 30
TA 2000				



nm 17 16 15 14 13 12 11 10 9 8 7 6 5 4 3 2 1 0					TCH 50			
ACFT	LNAV/VNAV	LNAV	Note: Circling NA.			THR 03	3.2° ALT	LDA 3356x46 11010x150ft P 3° (30)
A	550 (360) 1400m	600 (410) 1500m						
B								
C								
D		600 (410) 1700m						
GS	80	100	120	140	160			
ROD 3.2°	450	570	680	790	910			

© Navtech - hkmo05iaip00

Change: New print.

THIS CHART IS A PART OF NAVIGRAPH NDAC AND IS INTENDED FOR FLIGHT SIMULATION USE ONLY

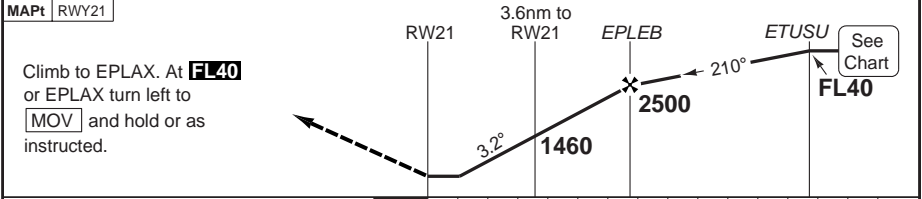
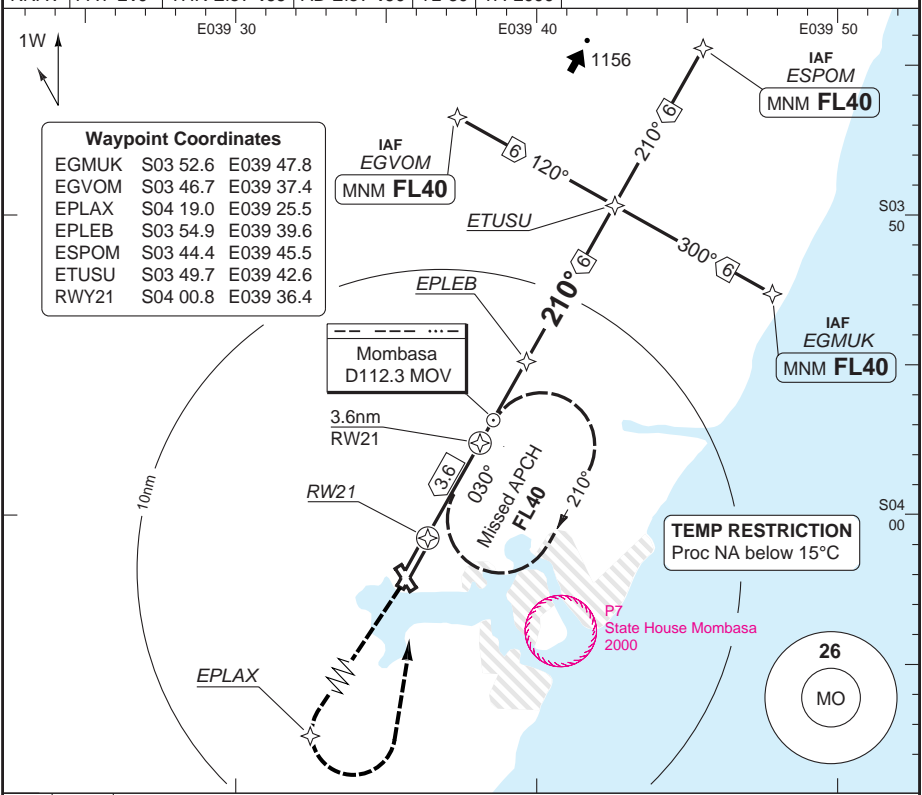
RNAV (GNSS) RWY 21

Moi INTL **MOMBASA**

Mombasa RAD 121.7	APP 120.3	TWR 118.6	APN 121.6	
RNAV	FAT 210°	THR Elev 199	AD Elev 196	TL 30
TA 2000				

Waypoint Coordinates

EGMUK	S03 52.6	E039 47.8
EGVOM	S03 46.7	E039 37.4
EPLAX	S04 19.0	E039 25.5
EPLB	S03 54.9	E039 39.6
ESPOM	S03 44.4	E039 45.5
ETUSU	S03 49.7	E039 42.6
RWY21	S04 00.8	E039 36.4



Climb to EPLAX. At **FL40** or EPLAX turn left to **MOV** and hold as instructed.

ACFT	LNAV/VNAV	LNAV	Note: Circling NA.			THR 3.2°	LDA 3356x46
A						21 ALT	11010x150ft
B	580 (380)	580 (380)				6 2270	P 3° (69)
C	1000m	1000m				5 1940	<p>FALS</p>
D						4 1600	
						3 1270	
						2 930	
						1 600	
GS	80	100	120	140	160		
ROD 3.2°	450	570	680	790	910		

© Navtech - hkmo06iapo00
EU OPS

Change: New print.

JAR-OPS Landing Minima

Moi INTL **MOMBASA**

The following Minima is for Public Transport aircraft and conforms to JAR-OPS1 regulations.

STRAIGHT-IN APPROACH		C				D			
R/W	Procedure	DA/ MDA QNH ft	DH/ MDH QFE ft	RVR m	RVR No ALS m	DA/ MDA QNH ft	DH/ MDH QFE ft	RVR m	RVR No ALS m
03	VOR (1)	630	430	1600	1800	630	430	1800	2000
03	RNAV (L/VNAV)	550	360	1600	1800	550	360	1800	2000
03	RNAV (LNAV)	600	410	1600	1800	600	410	1800	2000
21	ILS (1)	400	200	550	1000	400	200	550	1000
21	LLZ (1)	450	250	800	1600	450	250	1200	1800
21	VOR (1)	650	450	1200	2000	650	450	1600	2000
21	RNAV (L/VNAV)	580	380	1000	1800	580	380	1400	2000
21	RNAV (LNAV)	580	380	1000	1800	580	380	1400	2000

Notes:

(1) Procedure based on aerodrome elevation.

CIRCLING		C			D		
R/W	Procedure	MDA QNH ft	MDH QFE ft	Vis m	MDA QNH ft	MDH QFE ft	Vis m
21	ILS	1060	860	2400	1060	860	3600
03/21	VOR	1060	860	2400	1060	860	3600
03/21	RNAV	N/A	N/A	N/A	N/A	N/A	N/A

Notes:

TAKE-OFF		C		D	
Runway	Facilities	RVR	Vis	RVR	Vis
All	REDL and/or RCL	400	-	400	-
All	Nil (Day only)	500	-	500	-

Notes:

JAR-OPS Landing Minima

Moi INTL **MOMBASA**

The following Minima is for Public Transport aircraft and conforms to JAR-OPS1 regulations.

STRAIGHT-IN APPROACH		A				B			
R/W	Procedure	DA/ MDA QNH	DH/ MDH QFE	RVR	RVR	DA/ MDA QNH	DH/ MDH QFE	RVR	RVR
		ft	ft	m	m	ft	ft	m	m
03	VOR (1)	630	430	1300	1500	630	430	1400	1500
03	RNAV (L/VNAV)	550	360	1300	1500	550	360	1400	1500
03	RNAV (LNAV)	600	410	1300	1500	600	410	1400	1500
21	ILS (1)	400	200	550	1000	400	200	550	1000
21	LLZ (1)	450	250	800	1500	450	250	800	1500
21	VOR (1)	650	450	1000	1500	650	450	1200	1500
21	RNAV (L/VNAV)	580	380	900	1500	580	380	1000	1500
21	RNAV (LNAV)	580	380	900	1500	580	380	1000	1500

Notes:

(1) Procedure based on aerodrome elevation.

CIRCLING		A			B		
R/W	Procedure	MDA QNH	MDH QFE	Vis	MDA QNH	MDH QFE	Vis
		ft	ft	m	ft	ft	m
21	ILS	1060	860	1500	1060	860	1600
03/21	VOR	1060	860	1500	1060	860	1600
03/21	RNAV	N/A	N/A	N/A	N/A	N/A	N/A

Notes:

TAKE-OFF		A		B	
Runway	Facilities	RVR	Vis	RVR	Vis
All	REDL and/or RCL	400	-	400	-
All	Nil (Day only)	500	-	500	-

Notes: