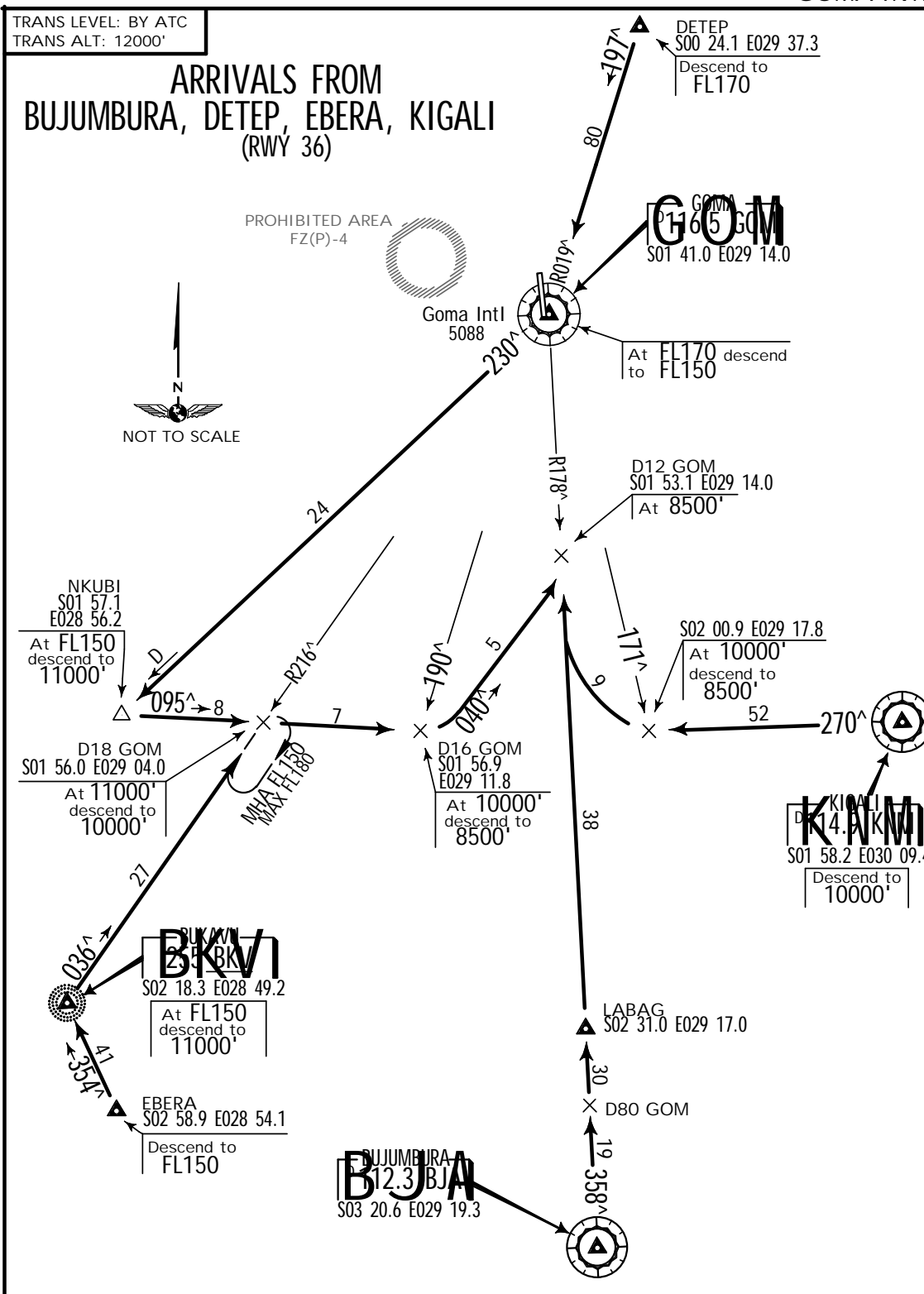


JEPPESEN

23 JUL 93

10-2

.STAR.
GOMA, ZAIRE
GOMA INTL



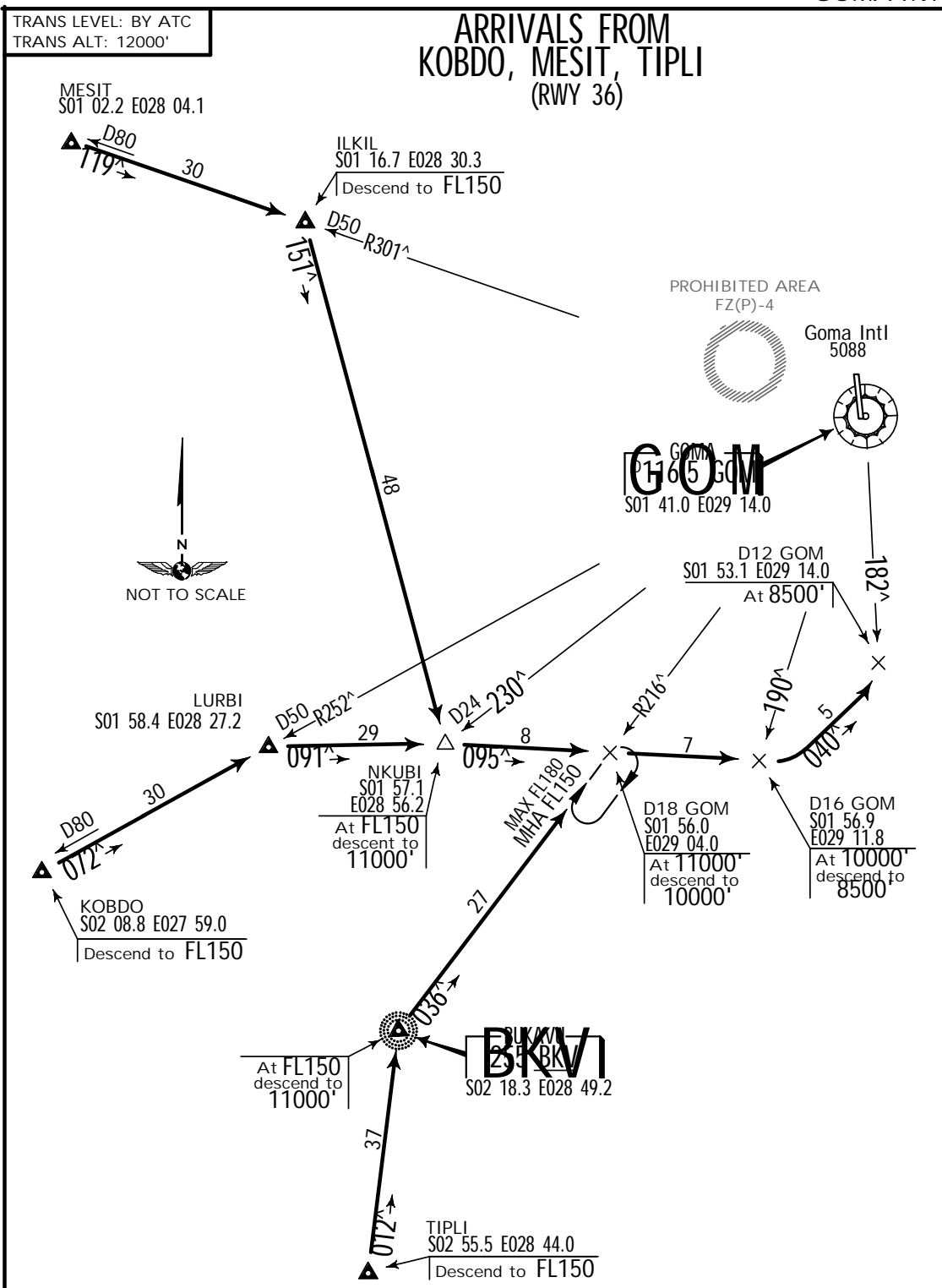
STAR	ROUTING
BUJUMBURA	Follow BJA R-358 via D80 GOM to reach D12 GOM at 8500'.
DETEP	Follow GOM R-019 inbound to GOM VORDME descending to FL170, intercept GOM R-230 to D24 GOM, turn RIGHT to report FL150 at Nkubi Int.
EBERA	Follow 354° bearing to BKV NDB descending to FL150, intercept 036° bearing from BKV NDB to D18 GOM, turn RIGHT, 095° track, descend to 10000'.
KIGALI	Follow KNM R-270 descending to 10000', at GOM R-171 turn RIGHT descending to 8500' and intercept GOM R-178 inbound to D12 GOM.

JEPPESEN

23 JUL 93

10-2A

.STAR.
GOMA, ZAIRE
GOMA INTL



STAR	ROUTING
KOBDO	Follow GOM R-252 inbound to D50 GOM descending to FL150, turn RIGHT, 091 [^] track to Nkubi Int (GOM R-230/D24), 095 [^] track to GOM R-190/D16 descending to 10000', turn LEFT, 040 [^] track descending to 8500', intercept GOM R-182 at D12 GOM.
MESIT	Follow GOM R-301 inbound to D50 GOM turn RIGHT, 151 [^] track to Nkubi Int (GOM R-230/D24) descending to FL150, turn LEFT, 095 [^] track descending to 11000'.
TIPLI	Follow 012 [^] bearing to BKV NDB descending to FL150, intercept 036 [^] bearing from BKV NDB to D18 GOM, turn RIGHT, 095 [^] track descending to 10000'.

JEPPESEN

28 FEB 92

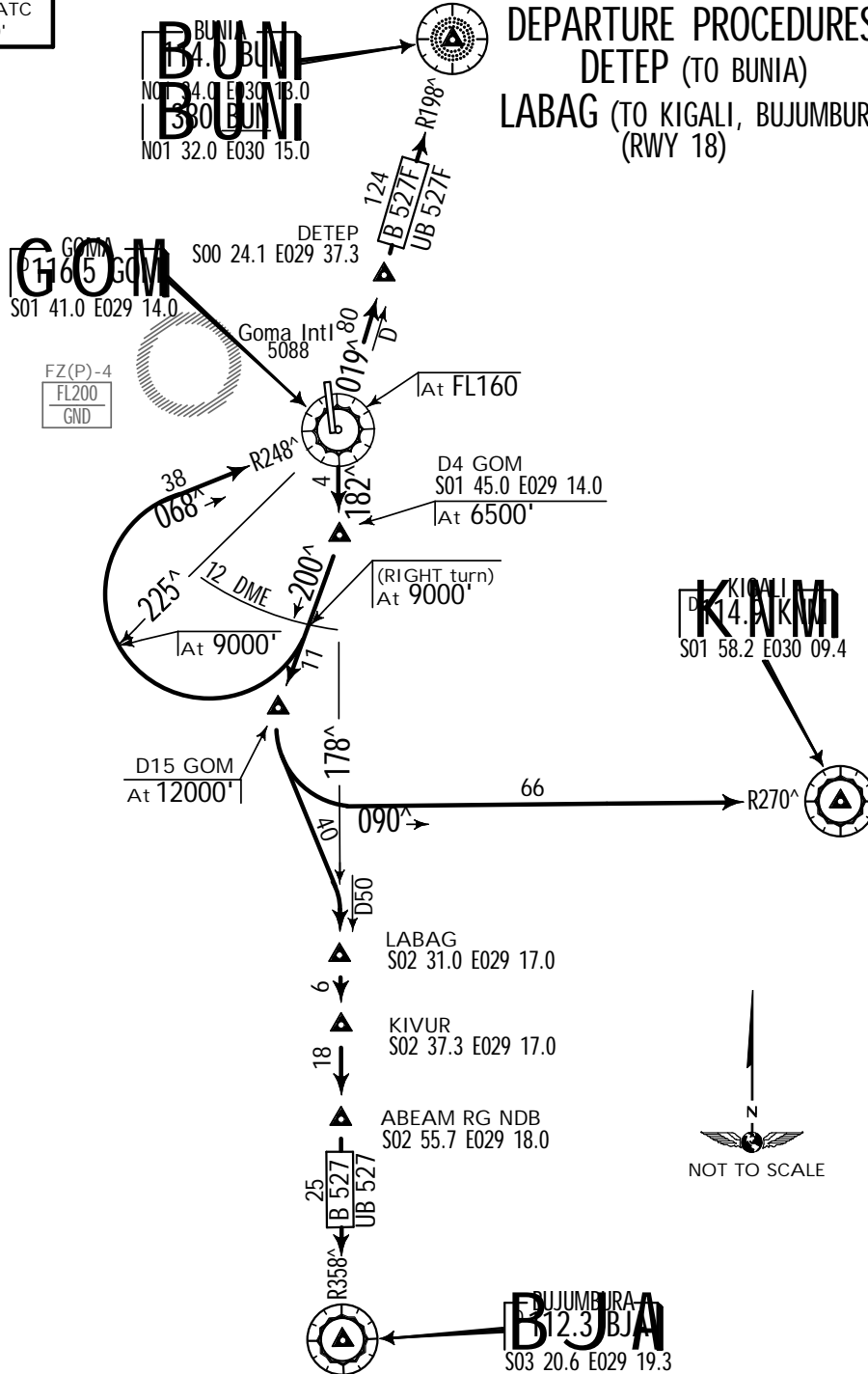
10-3

.SID.
GOMA, ZAIRE

GOMA INTL

TRANS LEVEL: BY ATC
TRANS ALT: 12000'

DEPARTURE PROCEDURES
DETEP (TO BUNIA)
LABAG (TO KIGALI, BUJUMBURA)
(RWY 18)



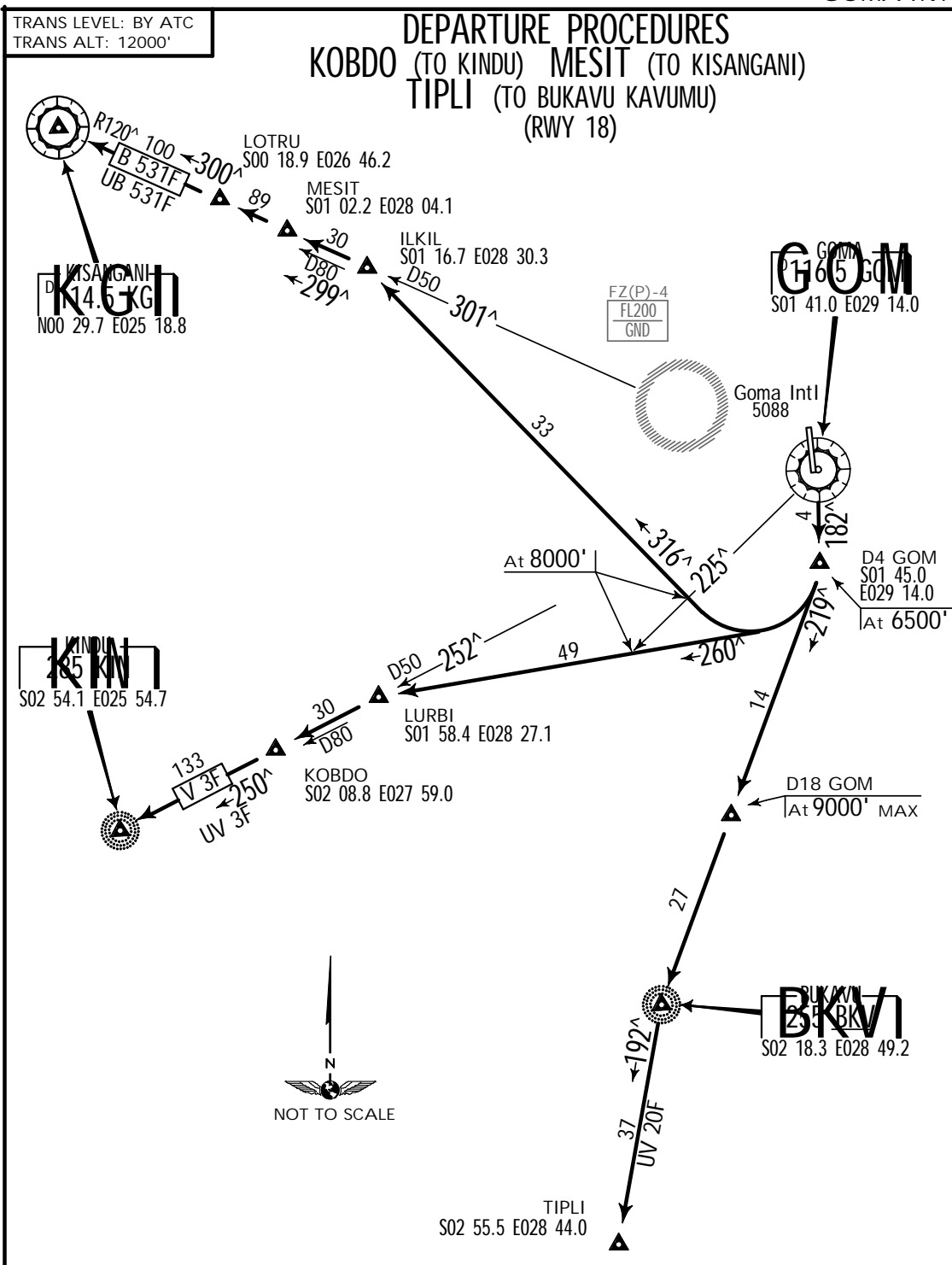
SID	RWY	ROUTING	ALTITUDE
DETEP	18	Intercept GOM R-182 to D4, turn RIGHT, 200° track to GOM 12 DME, turn RIGHT, intercept GOM R-248 inbound to GOM VORDME, then follow airway B-527F to Detep Int.	Cross GOM R-182/D4 at 6500', GOM 12 DME at 9000', maintain 9000' until GOM R-225, GOM VORDME at FL160.
LABAG		Intercept GOM R-182 to D4, turn RIGHT, 200° track to D15 GOM, then TO KIGALI turn LEFT climbing to FL150 to intercept KNM R-270 inbound to KNM VORDME. TO BUJUMBURA turn LEFT to intercept GOM R-178 to Labag Int.	Cross GOM R-182/D4 at 6500', D15 GOM at 12000'.

JEPPESEN

28 FEB 92

10-3A

.SID.
GOMA, ZAIRE
GOMA INTL



SID	RWY	ROUTING	ALTITUDE
KOBDO	18	Intercept GOM R-182 to D4, turn RIGHT climbing to cross GOM R-225 at 8000', continue climbing to intercept GOM R-252 at D50 GOM to Kobdo Int.	Cross GOM R-182/D4 at 6500'.
MESIT		Intercept GOM R-182 to D4, turn RIGHT to cross GOM R-225 at 8000', continue climbing to intercept GOM R-301 at D50 GOM to Mesit Int.	
TIPLI		Intercept GOM R-182 to D4, turn RIGHT, 219° bearing to BKV NDB,	Cross GOM R-182/D4 at 6500', D18 GOM at 9000' MAX.

GOMA, ZAIRE

FZNA **13-1** 17 SEP 93

JEPPESEN

GOMA INTL

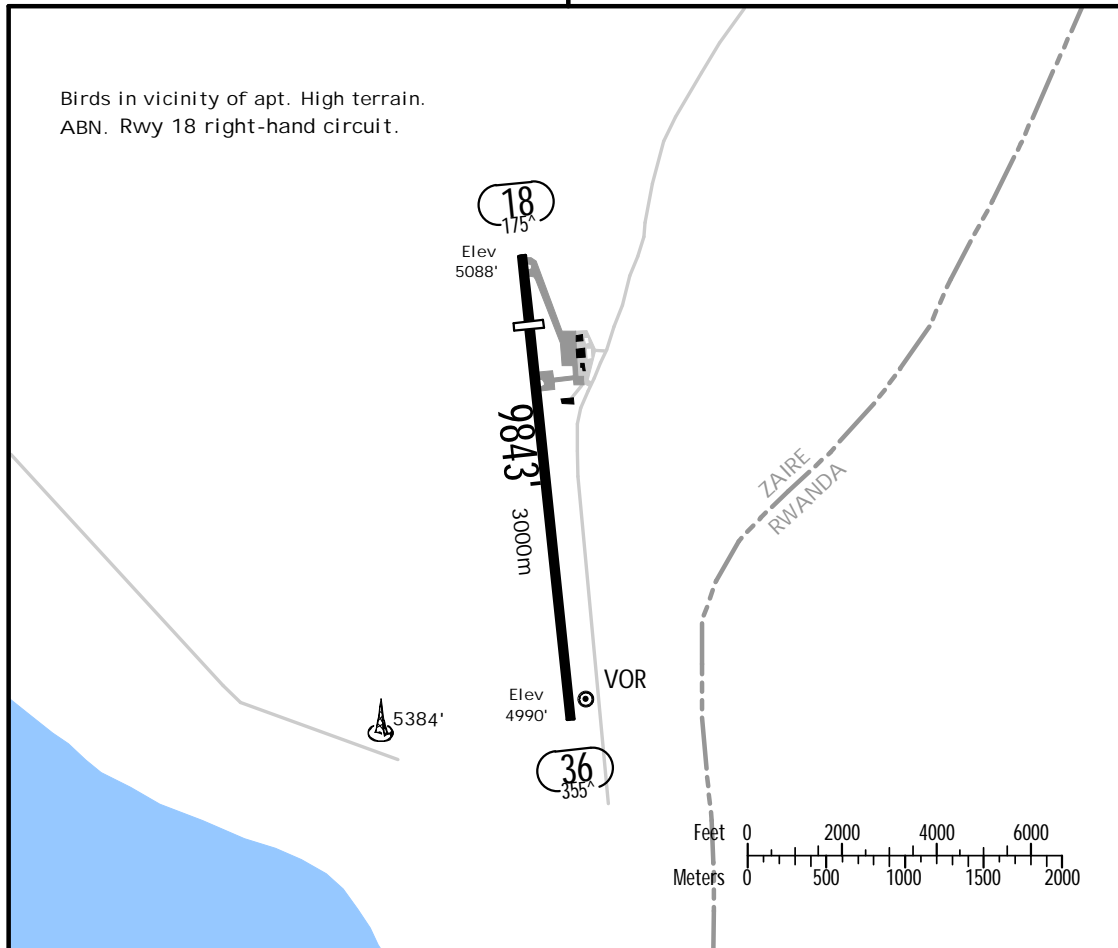
S01 40.0 E029 14.0 GOM 116.5- On Airport

Elev 5088' Var 01^W

*Tower 118.7

*Information 126.5

Birds in vicinity of apt. High terrain.
ABN. Rwy 18 right-hand circuit.



ADDITIONAL RUNWAY INFORMATION

RWY		USABLE LENGTHS		WIDTH		
		LANDING	BEYOND			
		Threshold	Glide Slope	TAKE-OFF		
18	HIRL	8366'	2550m	8366'	2550m	148'
36	HIRL ALS (configuration unknown) VASI					45m

TAKE-OFF

AIR CARRIER		AIR CARRIER (FAR 121)	
All Rwys		All Rwys	
		Adequate Vis Ref	
A	RVR 250m	2 Eng	vis 400m
B	RVR 300m	3 & 4 Eng	
C	RVR 400m		
D	RVR 400m		