

## Airport information:

Country: Gabon

City: LIBREVILLE

Coordinates: N 00° 27.5', E009 24.7

Elevation: 38

Customs: Customs

Fuel: Jet A1, 100LL

RFF: CAT 8

hours: H24.

## Runways:

Runway 16

Takeoff length: 3000, Landing length: 3000

Runway 34

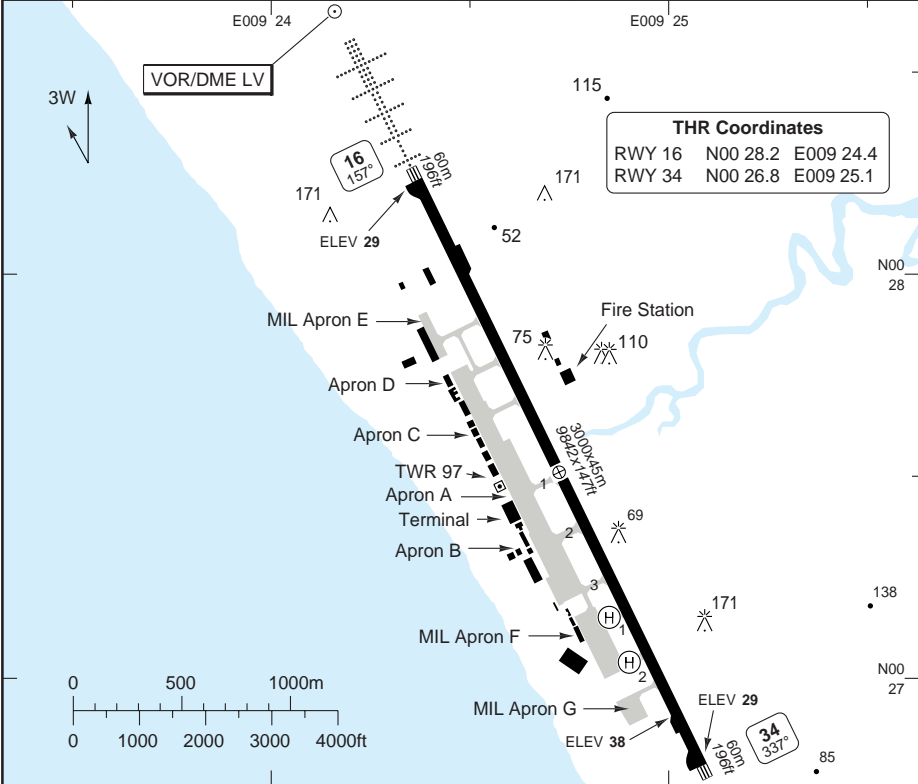
Takeoff length: 3000, Landing length: 3000

# AERODROME

Libreville TWR  
**118.7**

CTL  
**126.5**

AD Elev **38** | ARP: N00 27.5 E009 24.7 | RFF: CAT 8 | AD HR: H24



RWY	Slope	TORA m/ft	LDA m/ft	ALS	REDL	Additional
16	0	3000 / 9842	3000 / 9842	H-C	H	P 3°
34	0	3000 / 9842	3000 / 9842	-	H	-

EU OPS		TAKE OFF MINIMA			
RWY	Facilities	RVR			
		A	B	C	D
16/34	RCL (day only) or RCL + REDL	<b>LVTO</b>		250m	300m
	RCL (day only) or RCL + REDL			400m	400m
	NIL (day only)			500m	500m

## GENERAL INFORMATION

### 1. WARNING

- Bird and Animal hazard
- 180° turns available at ends of RWY for ACFT with MAX 40t AUW.
- Overflying the city prohibited.
- RWY 16 preferable in IMC.

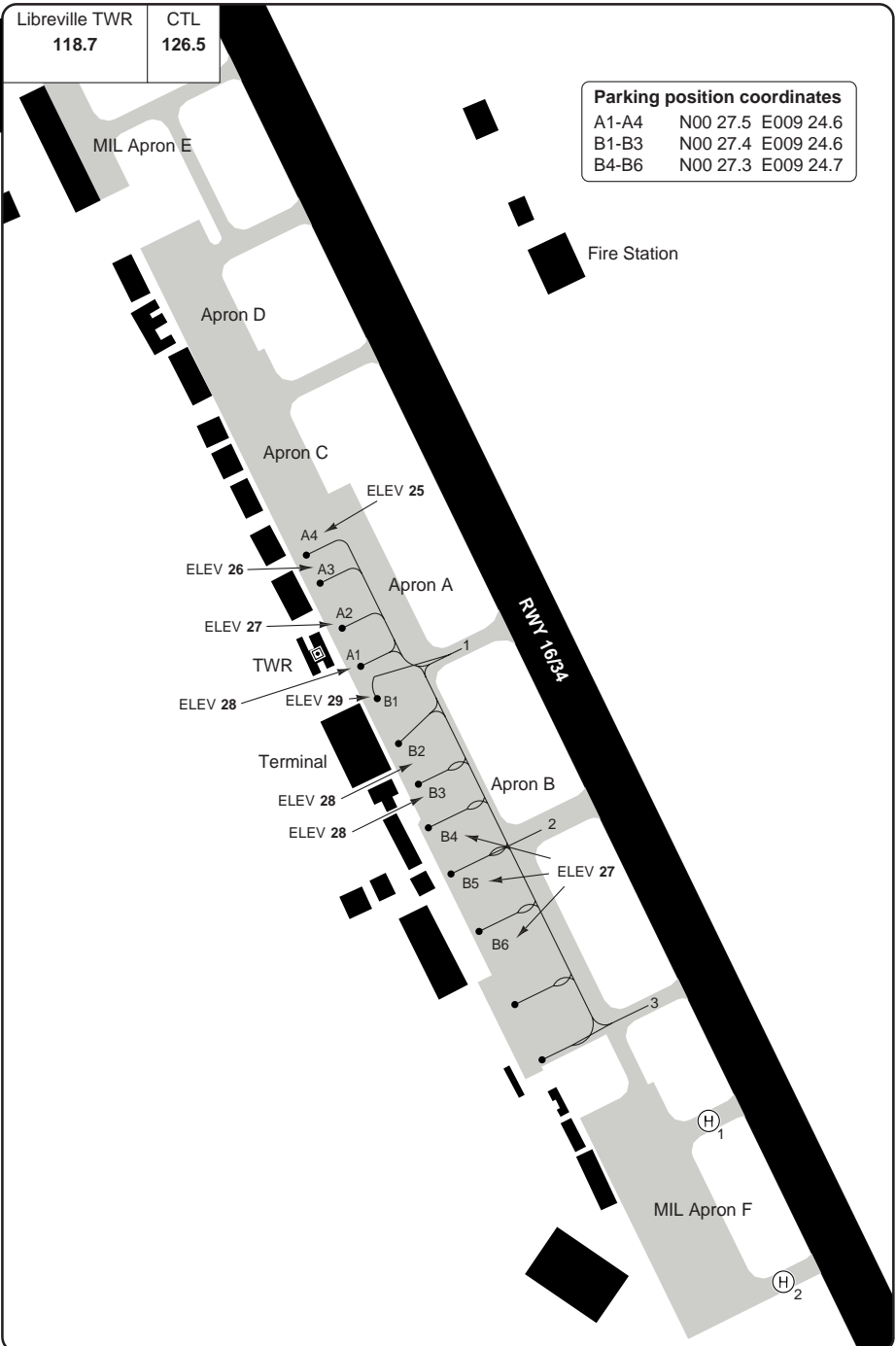
© Navtech - fool01laorg0

# AERODROME

Libreville TWR 118.7	CTL 126.5
-------------------------	--------------

Parking position coordinates		
A1-A4	N00 27.5	E009 24.6
B1-B3	N00 27.4	E009 24.6
B4-B6	N00 27.3	E009 24.7

10 - 2



© Navitech - fool02laorg0

Change: New print

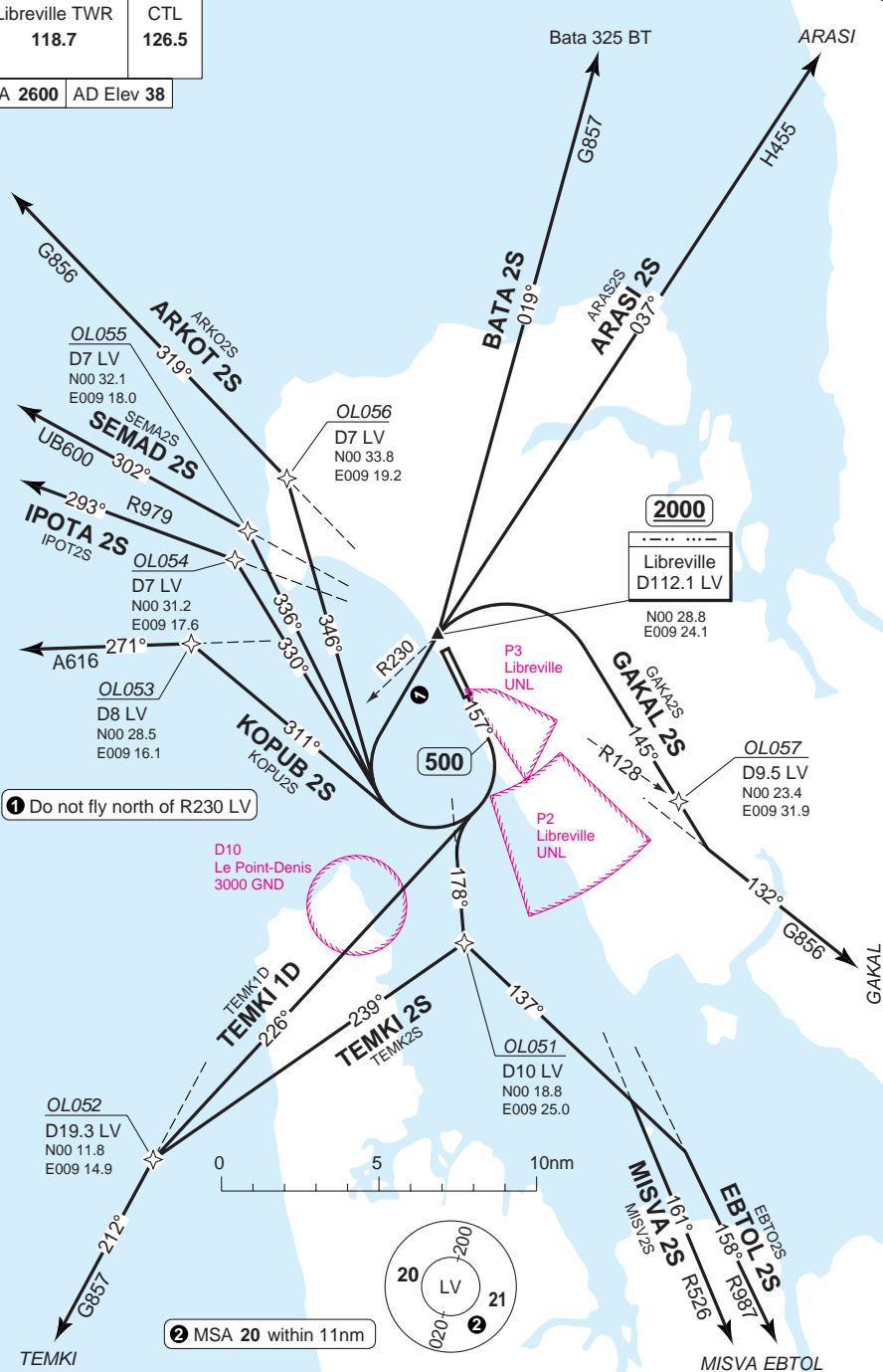
**THIS CHART IS A PART OF NAVIGRAPH NDAC AND IS INTENDED FOR FLIGHT SIMULATION USE ONLY**

# SID RWY 16 **RNAV**

Libreville TWR <b>118.7</b>	CTL <b>126.5</b>
--------------------------------	---------------------

TA 2600 AD Elev 38

ARKOT  
SEMAD  
IPOTA  
KOPUB



30 - 1

© Navitech - fool01daorg0

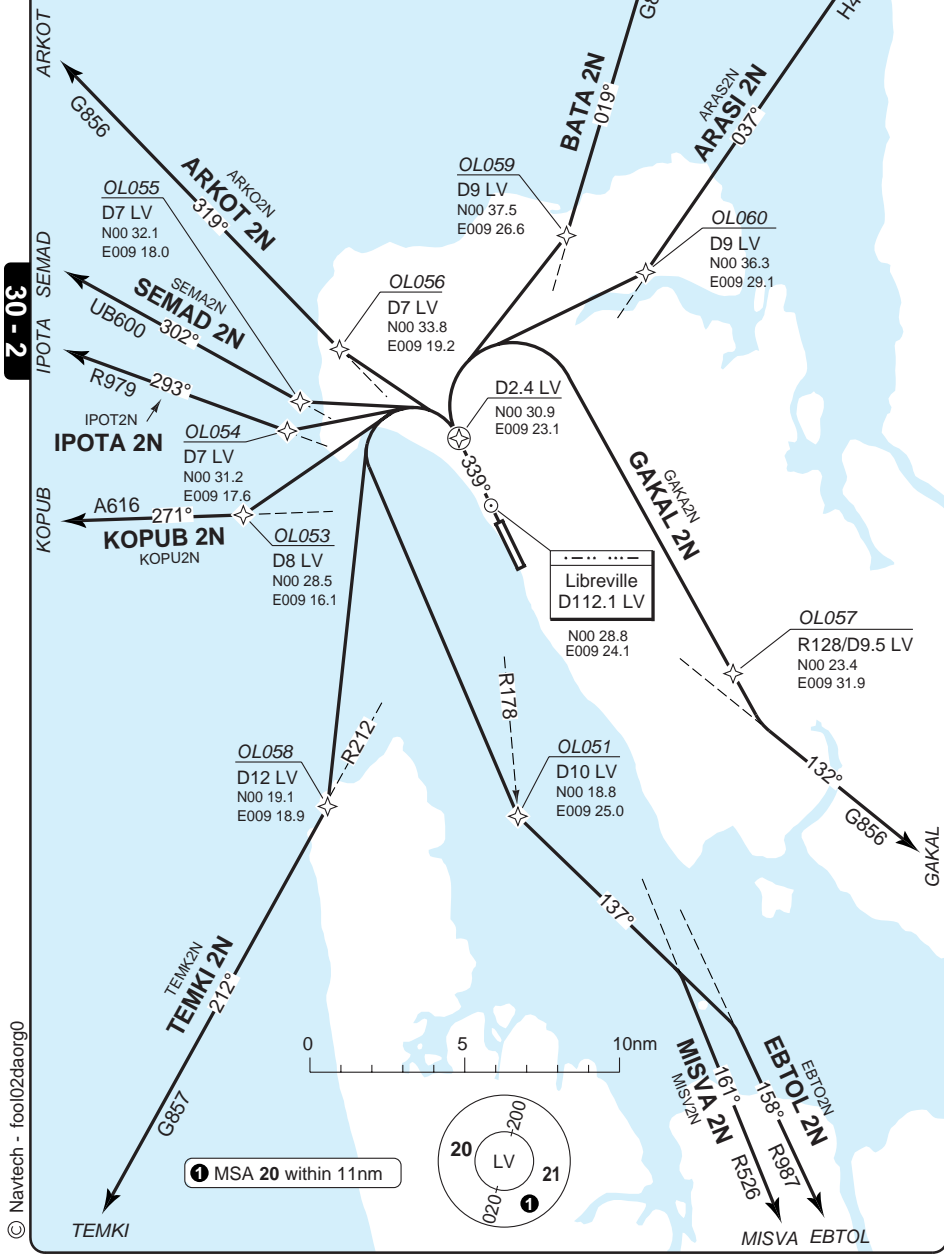
Change: New print

**THIS CHART IS A PART OF NAVIGRAPH NDAC AND IS INTENDED FOR FLIGHT SIMULATION USE ONLY**

# SID RWY 34 **RNAV**

Libreville TWR <b>118.7</b>	CTL <b>126.5</b>
--------------------------------	---------------------

TA <b>2600</b>	AD Elev <b>38</b>
----------------	-------------------



© Navitech - fool02daorg0

Change: New print

**THIS CHART IS A PART OF NAVIGRAPH NDAC AND IS INTENDED FOR FLIGHT SIMULATION USE ONLY**



Gabon - FOOL / LBV

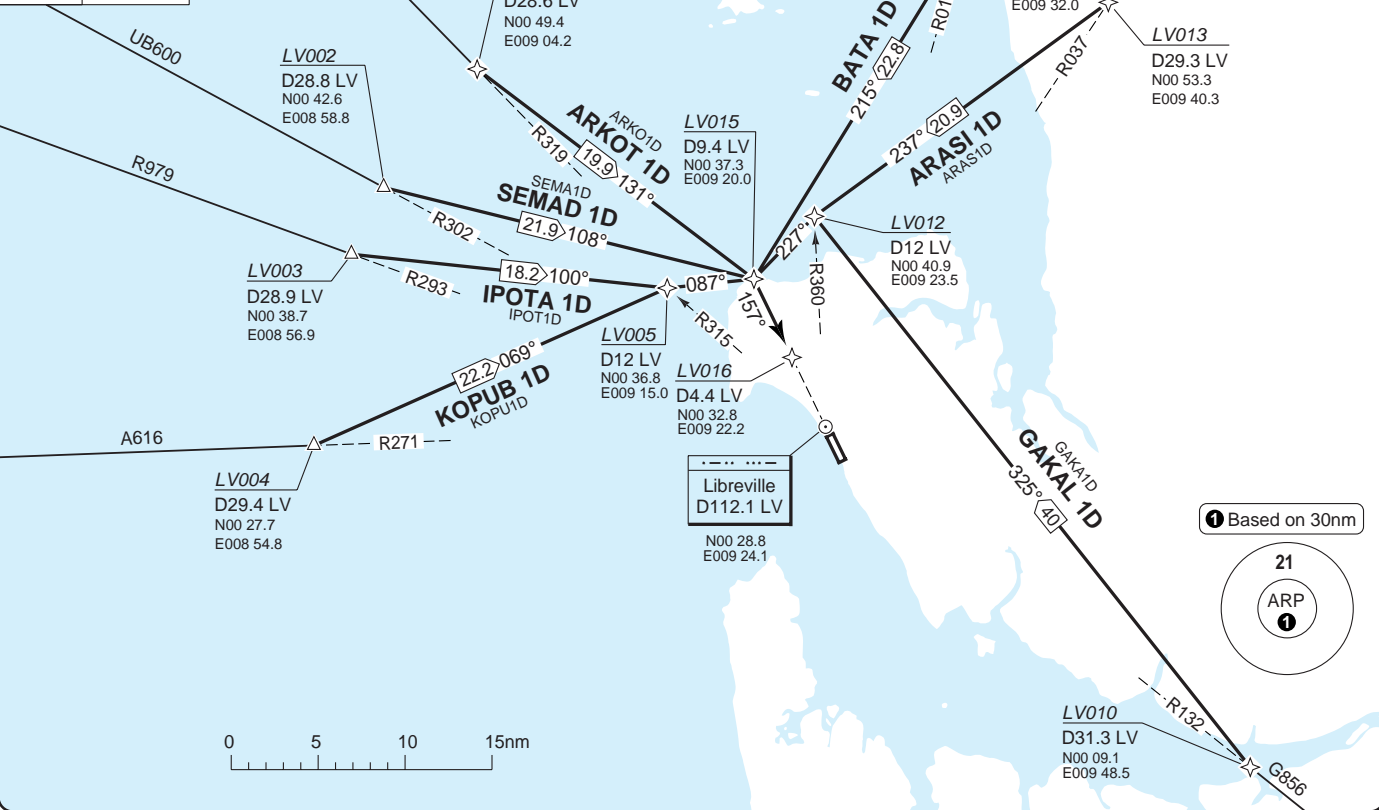
Leon M'Ba **LIBREVILLE**

40 - 2 | 08 AUG 12

STAR RWY 16 **RNAV** GNSS D-STAR

Libreville CTL <b>126.5</b>	TWR <b>118.7</b>
--------------------------------	---------------------

TL ATC	AD Elev <b>38</b>
--------	-------------------



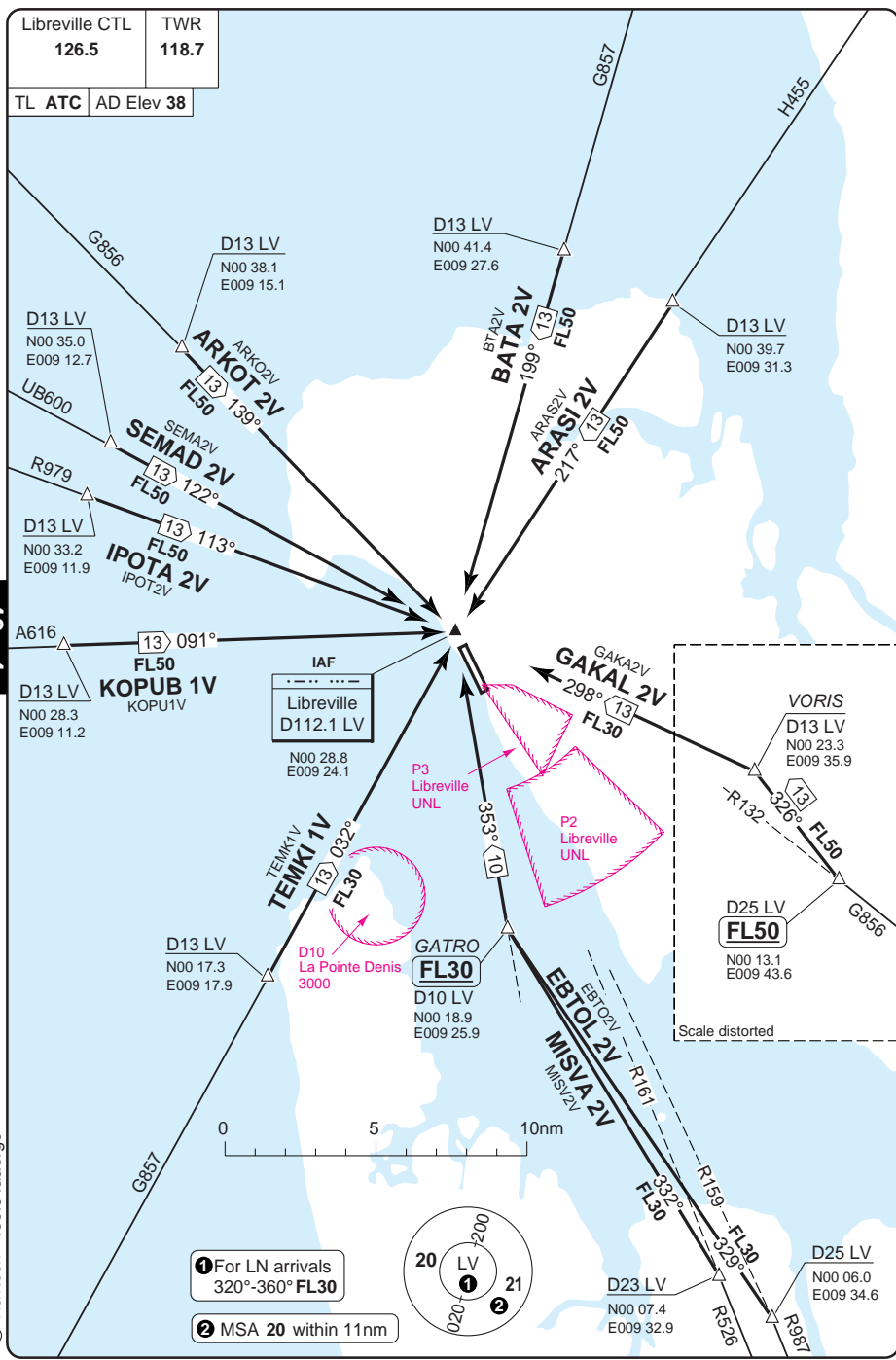


# STAR RWY 16 VOR

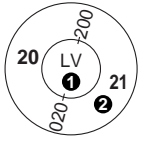
## Leon M'Ba LIBREVILLE

Libreville CTL	TWR
126.5	118.7
TL ATC	AD Elev 38

40 - 4



- ① For LN arrivals 320°-360° FL30
- ② MSA 20 within 11nm



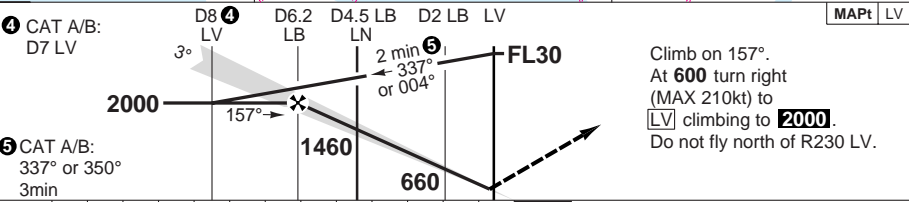
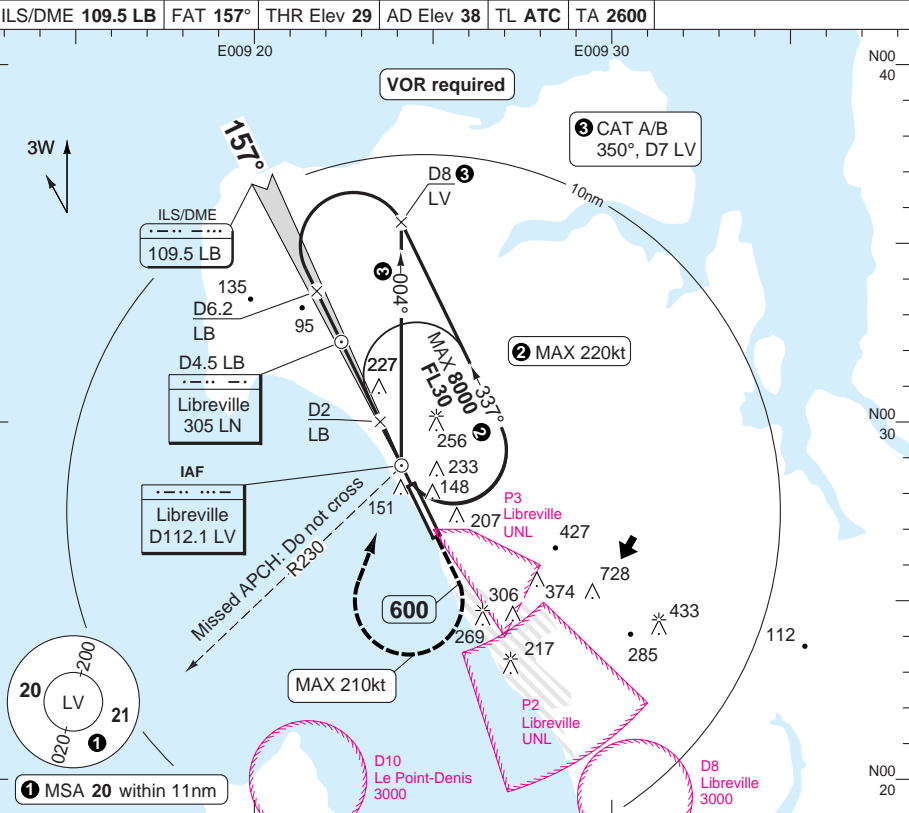
© Navitech - fool04aorg

Change: New print

**THIS CHART IS A PART OF NAVIGRAPH NDAC AND IS INTENDED FOR FLIGHT SIMULATION USE ONLY**

# ILS V RWY 16

Libreville CTL 126.5	TWR 118.7				
ILS/DME 109.5 LB	FAT 157°	THR Elev 29	AD Elev 38	TL ATC	TA 2600

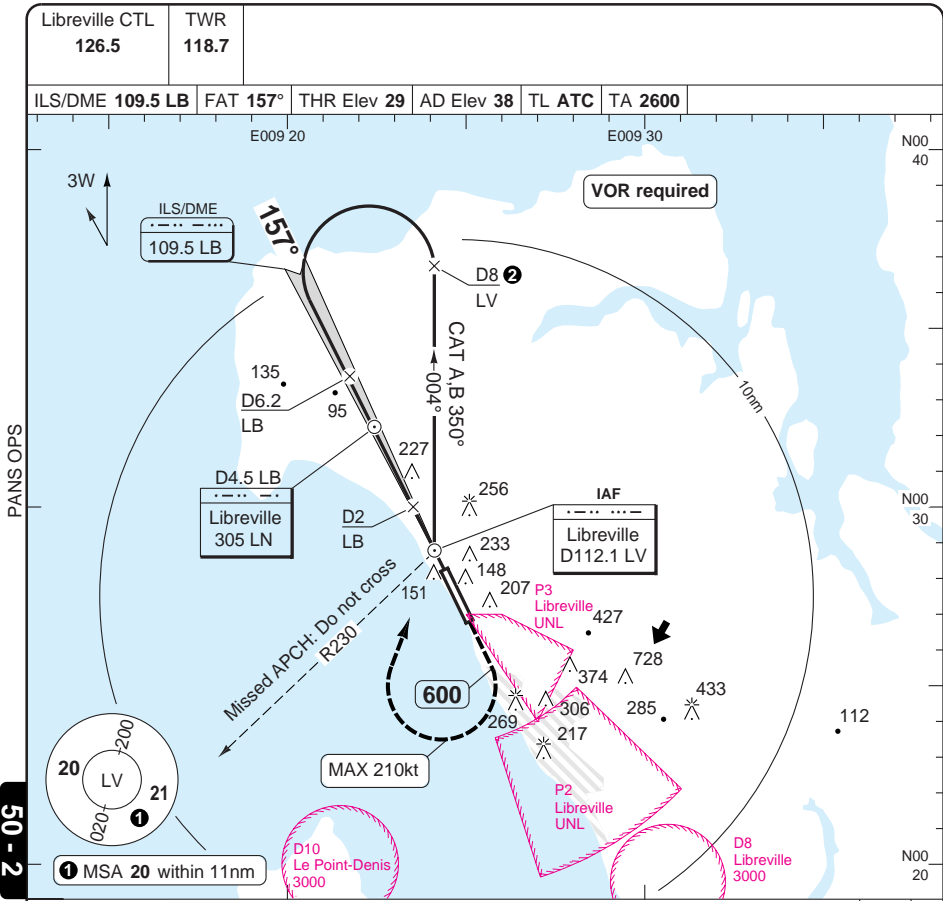


ACFT		ILS+DME	LOC+DME	Note: Circling NA				DME	3.0°	LDA 3000x45										
STATE	A	240 (210) 600m	480 (450) 1400m	nm	12	11	10	9	8	7	6	5	4	3	2	1	0	6.2	2000	9842x147ft P 3°
	B	250 (220) 600m		5	4	3	2	1	0	4	1300									
	C	260 (230) 600m	3	2	1	0	3	980												
	D	270 (240) 600m	2	1	0	2	660	1.5	480											
GS		80	100	120	140	160			FALS											
ROD 3.0°		430	530	640	750	850														
FAF-MAPt		4:03	3:14	2:42	2:19	2:02														

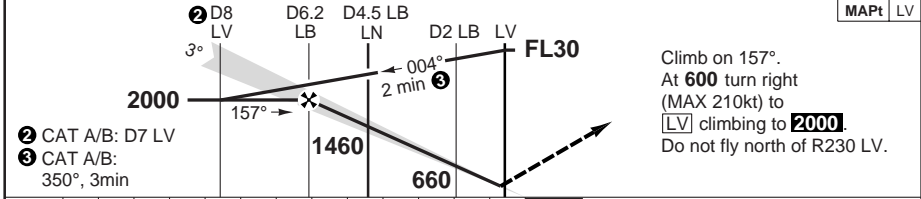
Change: New print

# ILS W or X RWY 16

Leon M'Ba **LIBREVILLE**



50 - 2



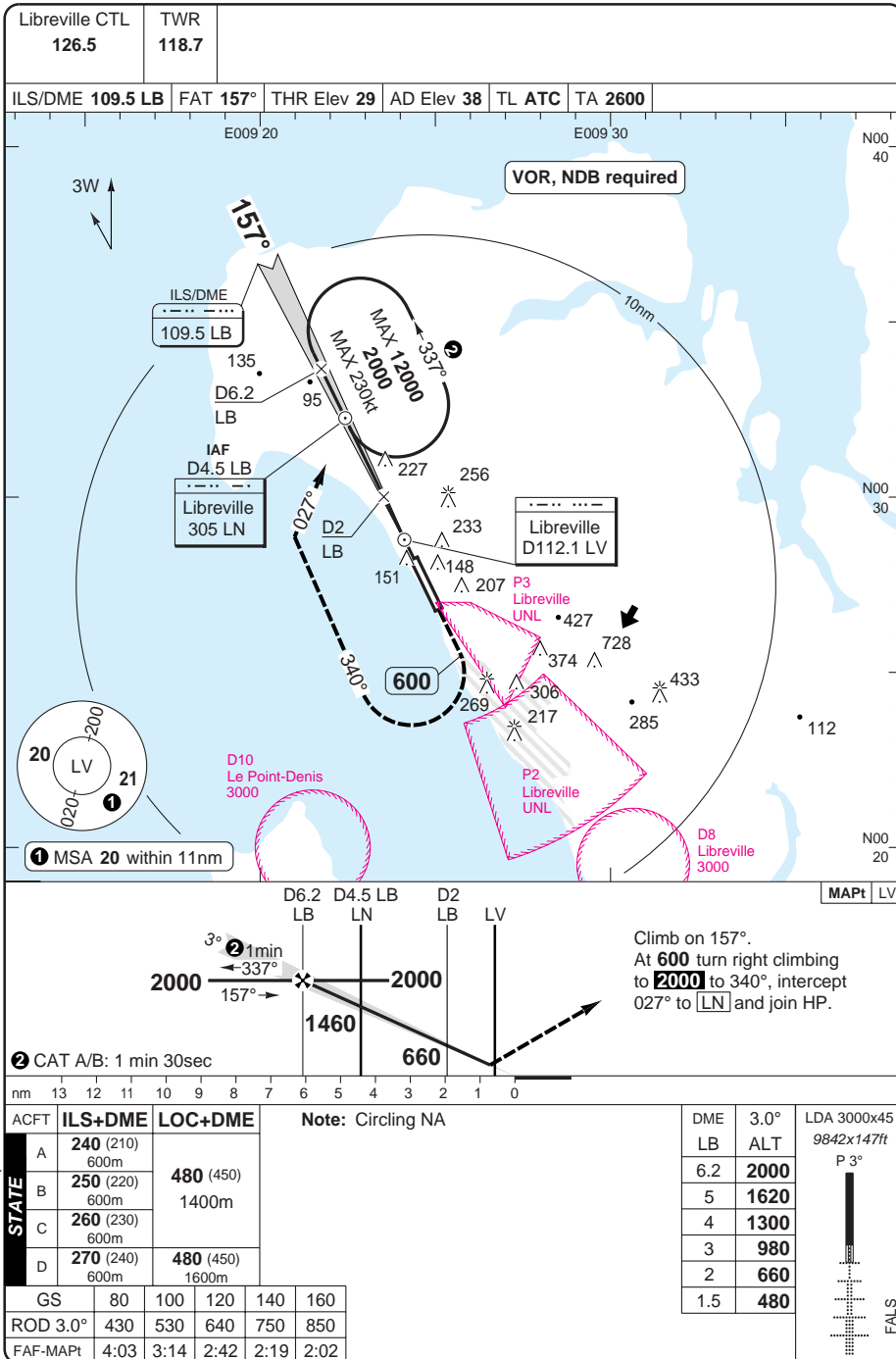
nm	13	12	11	10	9	8	7	6	5	4	3	2	1	0
ACFT	ILS+DME		LOC+DME		Note: Circling NA									
A	240 (210)	600m	480 (450)											
B	250 (220)	600m	1400m											
C	260 (230)	600m												
D	270 (240)	600m	480 (450)		1600m									
GS	80	100	120	140	160									
ROD 3.0°	430	530	640	750	850									
FAF-MAPt	4:03	3:14	2:42	2:19	2:02									

DME LB	3.0° ALT	LDA 3000x45 9842x147ft
6.2	2000	P 3°
6	1940	
5	1620	
4	1300	
3	980	
2	660	
1.5	480	

© Navtech - fool02iaip00

ILS Y RWY 16



# ILS Z RWY 16

Leon M'Ba **LIBREVILLE**

Libreville CTL  
126.5

TWR  
118.7

ILS/DME 109.5 LB FAT 157° THR Elev 29 AD Elev 38 TL ATC TA 2600

E009 10

E009 20

E009 30

N00 40

N00 30

VOR/DME required

3W ↑

D16 LV

IAF BINAS

D11 LV

D11 LV Arc

2000

MAX 12000

MAX 2000

MAX 230kt

157°

337°

R324

D11 LV Arc

2000

135°

D6.2 LB

95

227

D4.5 LB

Libreville 305 LN

D2 LB

256

233

148

151

207

P3 Libreville UNL

427

728

306

374

217

269

285

433

D10 Le Point-Denis 3000

P2 Libreville UNL

D8 Libreville 3000

600

340°

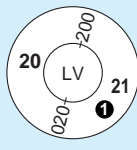
10nm

ILS/DME 109.5 LB

2 CAT A/B : R333

3 CAT A/B : R342

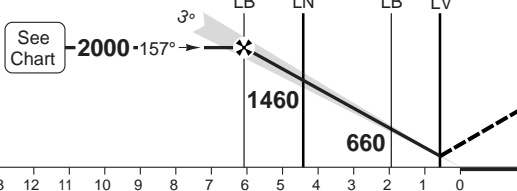
Libreville D112.1 LV



PANS OPS

50 - 4

MAPt LV



Climb on 157°. At 600 turn right climbing to 2000 to 340°, intercept R324 [LV] and join BINAS HP.

nm 15 14 13 12 11 10 9 8 7 6 5 4 3 2 1 0

ACFT ILS+DME LOC+DME

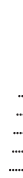
STATE	A	240 (210) 600m	480 (450) 1400m
	B	250 (220) 600m	
	C	260 (230) 600m	480 (450) 1600m
	D	270 (240) 600m	

Note: Circling NA

DME LB	3.0° ALT
6.2	2000
5	1620
4	1300
3	980
2	660
1.5	480

LDA 3000x45  
9842x147ft

P 3°



FALS

GS	80	100	120	140	160
ROD 3.0°	430	530	640	750	850
FAF-MAPt	4:03	3:14	2:42	2:19	2:02

© Navtech - fool04iaip00

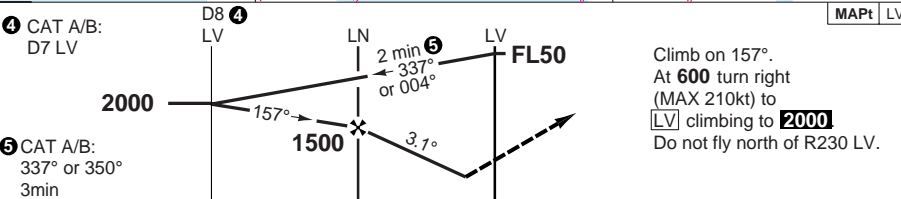
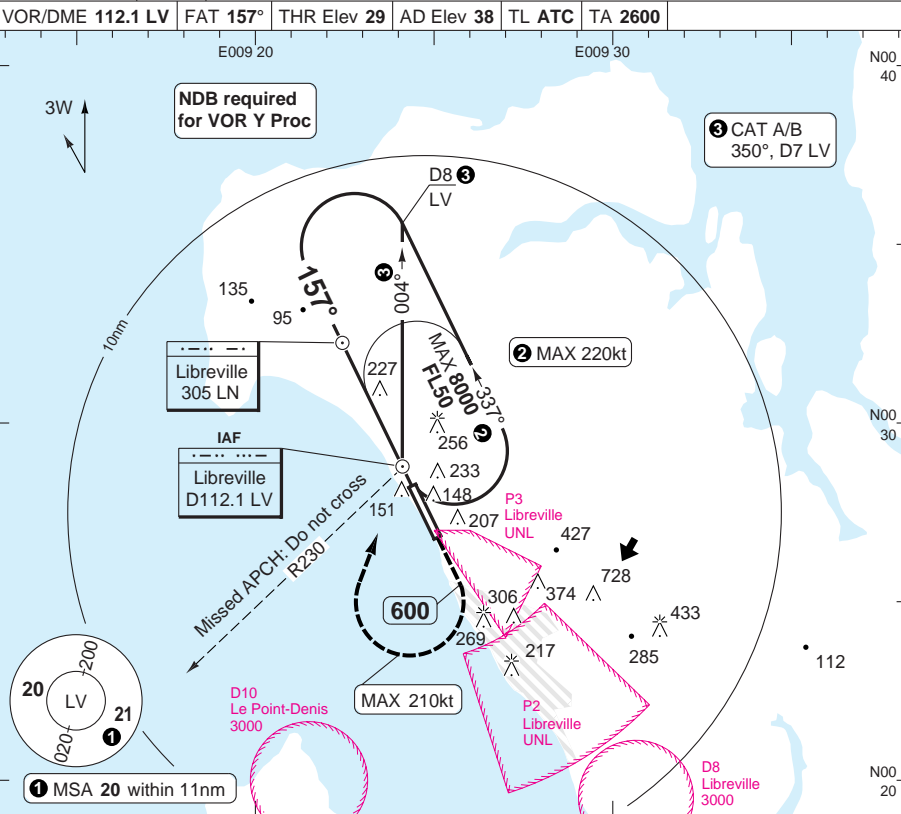
Change: New print

**THIS CHART IS A PART OF NAVIGRAPH NDAC AND IS INTENDED FOR FLIGHT SIMULATION USE ONLY**

# VOR X or Y RWY 16

Leon M'Ba **LIBREVILLE**

Libreville CTL <b>126.5</b>	TWR <b>118.7</b>				
VOR/DME <b>112.1 LV</b>	FAT <b>157°</b>	THR Elev <b>29</b>	AD Elev <b>38</b>	TL ATC	TA <b>2600</b>



nm	13	12	11	10	9	8	7	6	5	4	3	2	1	0			
ACFT	<b>VOR+NDB</b>		<b>VOR</b>	<b>VOR 3</b>							GS	80	100	120	140	160	LDA 3000x45 9842x147ft P 3°
A	480 (450)		530 (500)	530 (500)							ROD 3.1°	450	560	670	780	890	
B	1400m		1500m	1700m							FAF +20s	1360	1320	1280	1250	1210	
C				530 (500)							+40s	1210	1140	1060	990	920	
D	480 (450)		530 (500)	1900m							+60s	1060	950	840	730	620	
	1600m		1600m								FAF- 480	2:19	1:51	1:32	1:19	1:09	
											FAF-MAPt	2:46	2:13	1:51	1:35	1:23	

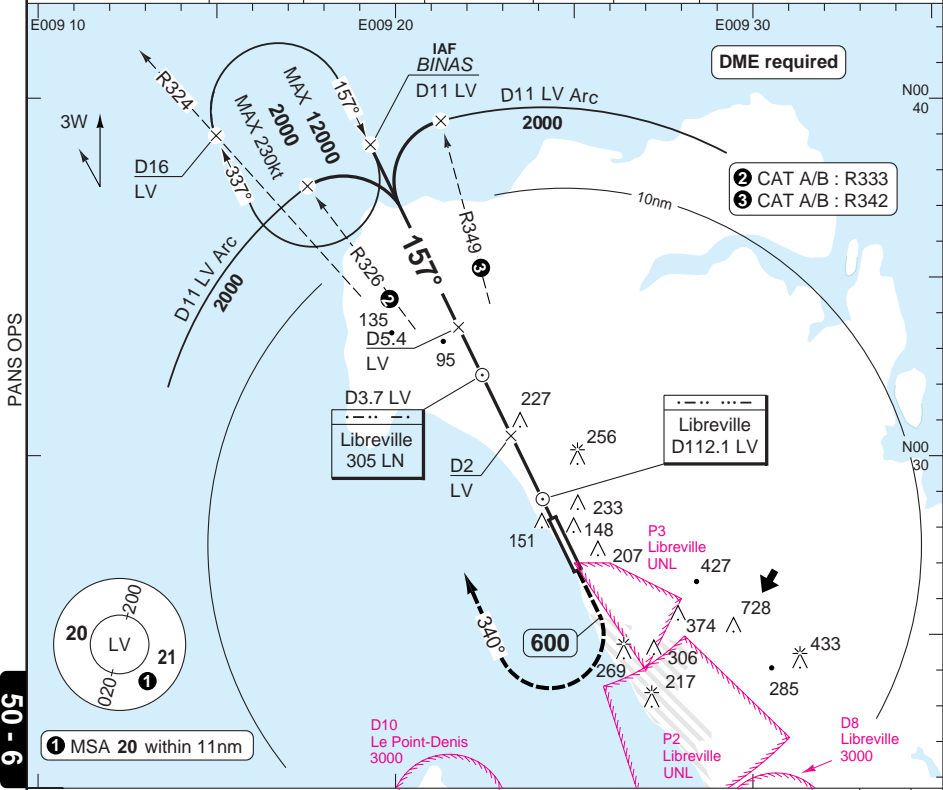
**Note:** Circling NA **3** Non CDFA

# VOR Z RWY 16

Leon M'Ba **LIBREVILLE**

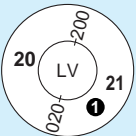
Libreville CTL **126.5** TWR **118.7**

VOR/DME **112.1 LV** FAT **157°** THR Elev **29** AD Elev **38** TL ATC TA **2600**

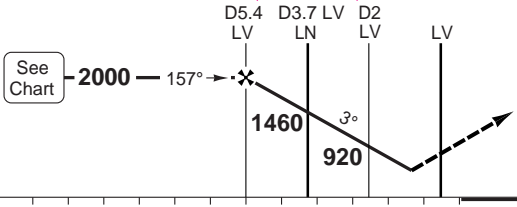


PANS OPS

50 - 6



1 MSA 20 within 11nm



Climb on 157°. At **600** turn right climbing to **2000** to 340°, intercept R324 [LV] and join BINAS HP.

MAPt LV

ACFT	<b>VOR+DME</b> Note: Circling NA					
A	<b>480</b> (450)					
B	1400m					
C						
D	<b>480</b> (450)					
	1600m					

GS	80	100	120	140	160
ROD 3.0°	440	540	650	760	870
FAF-MAPt	4:03	3:14	2:42	2:19	2:02

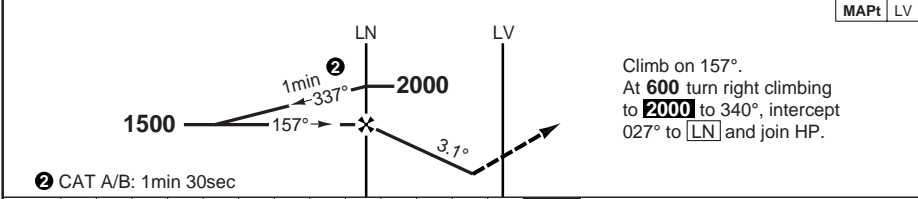
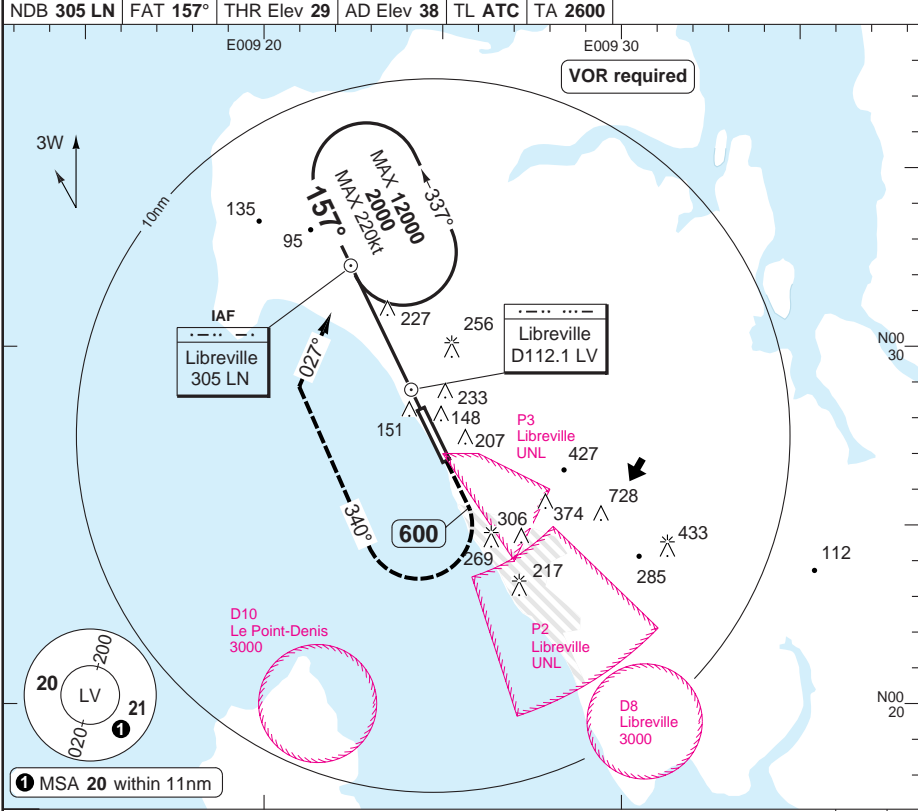
DME LV	3.0° ALT	LDA 3000x45 9842x147ft
5.4	<b>2000</b>	P 3° FALS
5	<b>1890</b>	
4	<b>1570</b>	
3	<b>1250</b>	
2	<b>920</b>	
1	<b>600</b>	
0.6	<b>480</b>	

© Navtech - fool06iaip00

Change: New print

# NDB RWY 16

Libreville CTL 126.5	TWR 118.7				
NDB 305 LN	FAT 157°	THR Elev 29	AD Elev 38	TL ATC	TA 2600



nm	13	12	11	10	9	8	7	6	5	4	3	2	1	0
ACFT	<b>NDB</b>		<b>Note: Circling NA</b>											
A	510 (480)		GS	80	100	120	140	160	LDA 3000x45 9842x147ft P 3°					
B	1500m		ROD 3.1°	450	560	670	780	890						
C			FAF +20s	1360	1320	1280	1250	1210						
D	510 (480) 1600m		+40s	1210	1140	1060	990	920						
			+60s	1060	950	840	730	620						
			FAF- 510	2:15	1:48	1:30	1:17	1:07						
			FAF-MAPt	2:46	2:13	1:51	1:35	1:23	FALS					

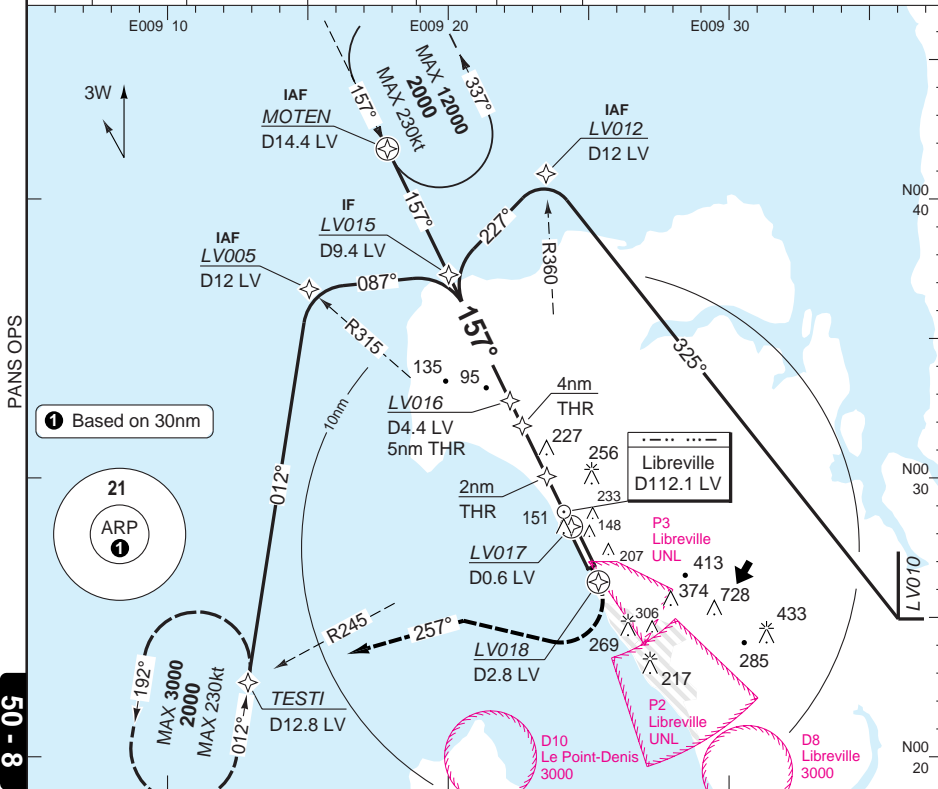
# RNAV (GNSS) RWY 16

Leon M'Ba **LIBREVILLE**

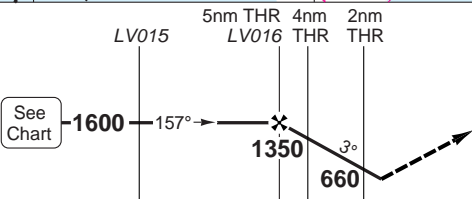
Libreville CTL  
126.5

TWR  
118.7

RNAV FAT 157° THR Elev 29 AD Elev 38 TL ATC TA 2600



50 - 8

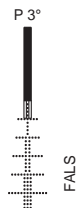


nm 17 16 15 14 13 12 11 10 9 8 7 6 5 4 3 2 1 0

ACFT	LNAV	Note: Circling NA
A	480 (450)	
B	1400m	
C		
D	480 (450) 1600m	

THR	3.0° ALT	LDA 3000x45 9842x147ft P 3°
16		
4.8	1600	
4	1350	
3	1040	
2	720	
1.3	480	

GS	80	100	120	140	160
ROD 3.0°	430	540	640	750	850



© Navtech - fool08iaip00

Change: New print

## JAR-OPS Landing Minima

Leon M'Ba **LIBREVILLE**

The following Minima is for Public Transport aircraft and conforms to JAR-OPS1 regulations.

STRAIGHT-IN APPROACH		C				D			
R/W	Procedure	DA/ MDA QNH ft	DH/ MDH QFE ft	RVR m	RVR No ALS m	DA/ MDA QNH ft	DH/ MDH QFE ft	RVR m	RVR No ALS m
16	ILS	<b>260</b>	230	600	1000	<b>270</b>	240	600	1000
16	LOC	<b>480</b>	450	1200	2000	<b>480</b>	450	1600	2000
16	VOR/DME	<b>480</b>	450	1200	2000	<b>480</b>	450	1600	2000
16	VOR + NDB	<b>480</b>	450	1200	2000	<b>480</b>	450	1600	2000
16	VOR	<b>530</b>	500	1200	2000	<b>530</b>	500	1600	2000
16	NDB	<b>510</b>	480	1200	2000	<b>510</b>	480	1600	2000
16	RNAV (GNSS)	<b>480</b>	450	1200	2000	<b>480</b>	450	1600	2000

Notes:

CIRCLING		C			D		
R/W	Procedure	MDA QNH ft	MDH QFE ft	Vis m	MDA QNH ft	MDH QFE ft	Vis m
Not authorised							

Notes:

TAKE-OFF		C		D	
Runway	Facilities	RVR	Vis	RVR	Vis
All	-	250	-	300	-

Notes:

## JAR-OPS Landing Minima

Leon M'Ba **LIBREVILLE**

The following Minima is for Public Transport aircraft and conforms to JAR-OPS1 regulations.

STRAIGHT-IN APPROACH		A				B			
R/W	Procedure	DA/ MDA QNH	DH/ MDH QFE	RVR	RVR	DA/ MDA QNH	DH/ MDH QFE	RVR	RVR
		ft	ft	m	m	ft	ft	m	m
16	ILS	<b>240</b>	210	600	1000	<b>250</b>	220	600	1000
16	LOC	<b>480</b>	450	1000	1500	<b>480</b>	450	1200	1500
16	VOR/DME	<b>480</b>	450	1000	1500	<b>480</b>	450	1200	1500
16	VOR + NDB	<b>480</b>	450	1000	1500	<b>480</b>	450	1200	1500
16	VOR	<b>530</b>	500	1000	1500	<b>530</b>	500	1200	1500
16	NDB	<b>510</b>	480	1000	1500	<b>510</b>	480	1200	1500
16	RNAV (GNSS)	<b>480</b>	450	1000	1500	<b>480</b>	450	1200	1500

Notes:

CIRCLING		A			B		
R/W	Procedure	MDA QNH	MDH QFE	Vis	MDA QNH	MDH QFE	Vis
		ft	ft	m	ft	ft	m
Not authorised							

Notes:

TAKE-OFF		A		B	
Runway	Facilities	RVR	Vis	RVR	Vis
All	-	250	-	250	-

Notes: