

Notice: After 1/24/2002 0901Z this chart should not be used without first checking JeppView or NOTAMs.

FNLU

4TH OF FEBRUARY

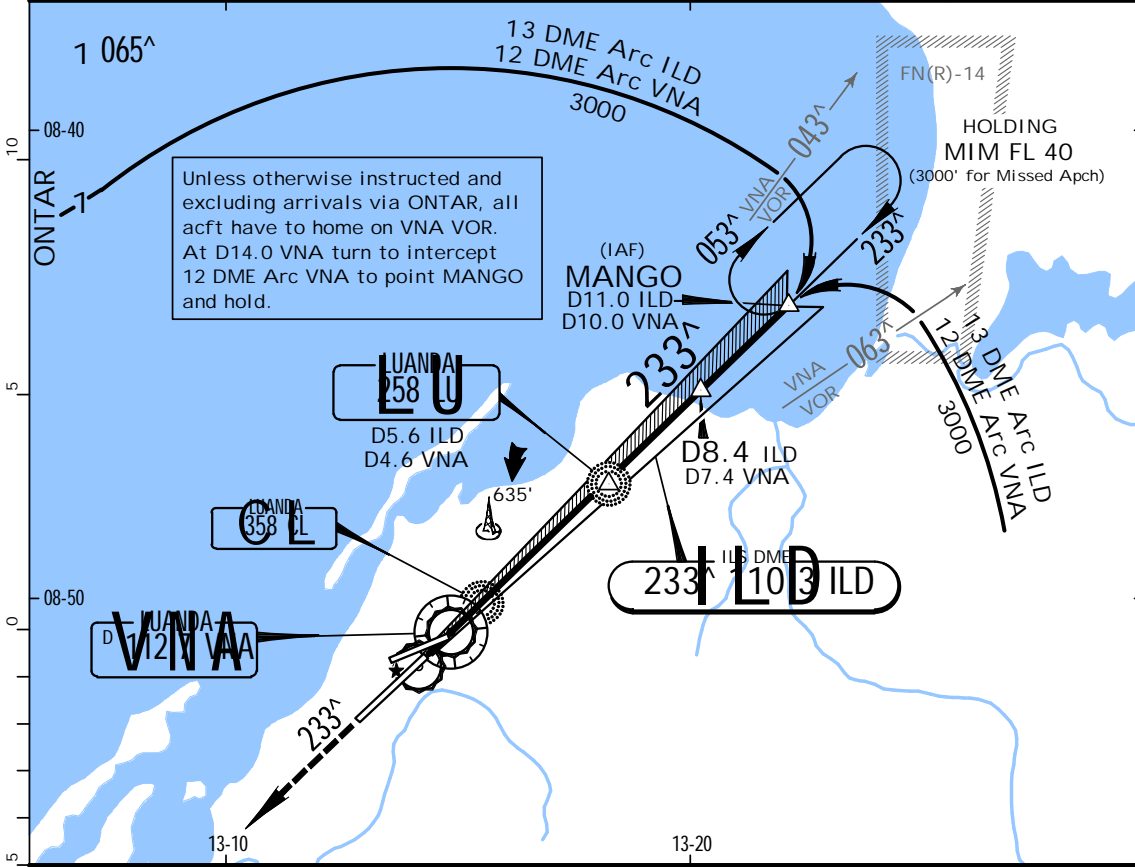
JEPPESEN

14 JAN 00 (11-1)

.Eff.27.Jan.VOR DME ILS Rwy 23

LUANDA, ANGOLA

| | | | | | |
|---|---------------------------------------|-------------------------------|-----------------------------|--------------------------|-------------|
| LUANDA Approach 119.1 | | LUANDA Tower 118.1 | | *Ground 121.9 | |
| LOC ILD 110.3 | Final Apch Crs 233 [^] | GS LU NDB 2010' (1778') | ILS DA(H) 432' (200') | Apt Elev 238' | 2500' |
| RWY 232' | | | | | |
| MISSED APCH: Climb on R-233 VNA to D10.0 VNA, then turn RIGHT to intercept 12 DME Arc VNA, climbing to 3000'. Continue to MANGO and hold, or as directed. | | | | | |
| Alt Set: MB | | Rwy Elev: 8 MB | Trans level: By ATC | Trans alt: 3000' (2768') | MSA VNA VOR |



| | | | |
|-------------------------|------------------|----------|-----------|
| OCA(H) RWY 23 | LU NDB | D8.4 ILS | MANGO |
| ILS A: 363' (131') | D5.6 ILS | D7.4 VNA | D11.0 ILS |
| B: 373' (141') | D4.6 VNA | | D10.0 VNA |
| C: 383' (151') | GS 2010' (1778') | | 3000' |
| D: 393' (161') | | | (2768') |
| GS out 670' (438') | | | |
| TCH displ thresh 49' | | | |
| RWY 23 232' | | | |

| | | | | | | | |
|---------------|-------------------|------|------|------|------|------|--|
| Gnd speed-Kts | 70 | 90 | 100 | 120 | 140 | 160 | |
| GS | 3:00 [^] | 3:77 | 4:48 | 5:39 | 6:47 | 8:62 | |
| LU NDB to MAP | 5.4 | 4:38 | 3:36 | 3:14 | 2:42 | 2:19 | |

| | | | | | |
|----------------------------|------|------------------------------------|--|----------------|--------------------|
| STRAIGHT-IN LANDING RWY 23 | | | | CIRCLE-TO-LAND | |
| ILS DA(H) 432' (200') | | LOC (GS out) MDA(H) 670' (438') | | | |
| FULL | | ALS out | | Max Kts | MDA(H) |
| A | | | | 100 | 980' (742') 1600m |
| B | | | | 135 | 980' (742') 2000m |
| C | 800m | 1200m | | 180 | 1020' (782') 3600m |
| D | | | | 205 | 1120' (882') 4800m |

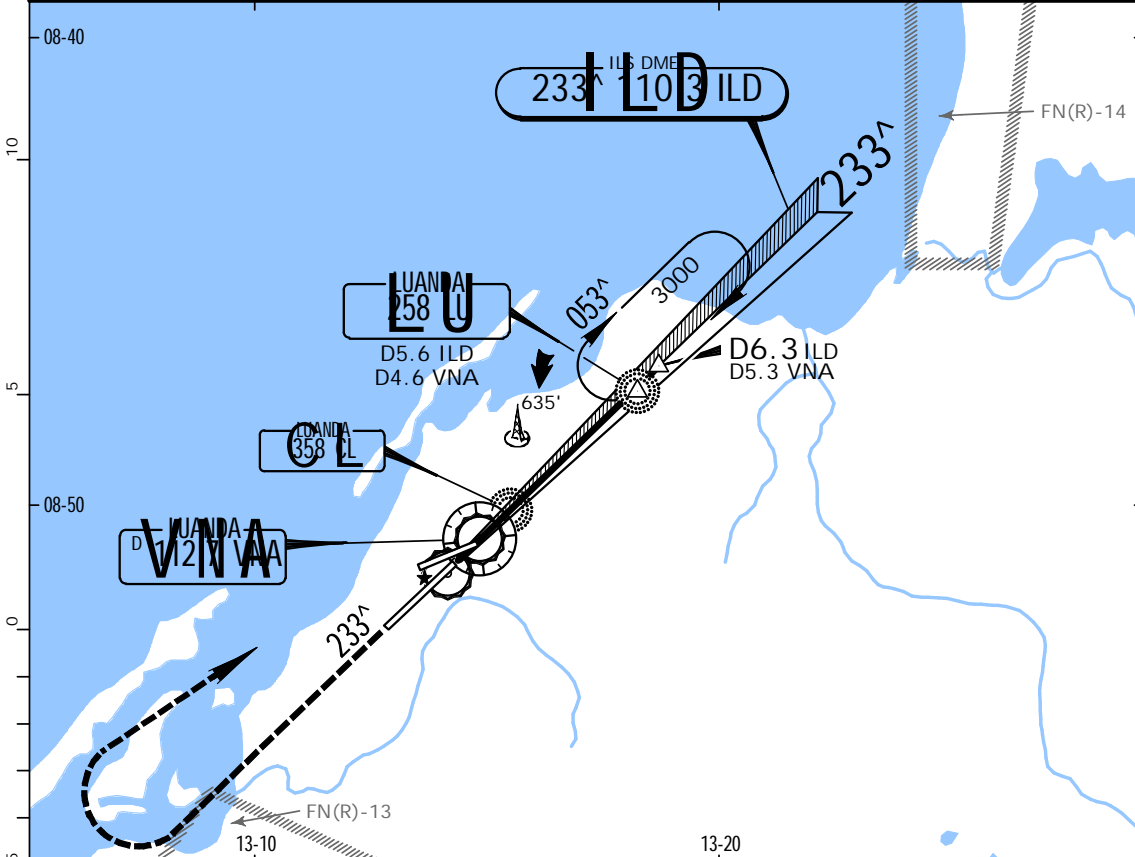
PANS OPS 3

FNLU
4TH OF FEBRUARY

JEPPESEN
14 JAN 00 (11-2) .Eff.27.Jan.

LUANDA, ANGOLA
NDB ILS Rwy 23

| | | | | | |
|--|---------------------------------------|-------------------------------|-----------------------------|--------------------------|------------|
| LUANDA Approach 119.1 | | LUANDA Tower 118.1 | | *Ground 121.9 | |
| LOC ILD 110.3 | Final Apch Crs 233 [^] | GS LU NDB 2010' (1778') | ILS DA(H) 432' (200') | Apt Elev 238' | 2500' |
| MISSED APCH: Climb on runway heading to 2500', then climbing turn RIGHT to LU NDB to 3000' and hold, or as directed. | | | | RWY 232' | |
| Alt Set: MB | | Rwy Elev: 8 MB | Trans level: By ATC | Trans alt: 3000' (2768') | MSA LU NDB |



| | | |
|--------------------|------------------|----------|
| OCA(H) RWY 23 | LU NDB | D6.3 ILD |
| ILS A: 363' (131') | D5.6 ILD | D5.3 VNA |
| B: 373' (141') | D4.6 VNA | |
| C: 383' (151') | GS 2010' (1778') | |
| D: 393' (161') | | |
| GS out 670' (438') | | |

TCH displ
thresh 49'
RWY 23 232'

| | | | | | | | |
|---------------|-------------------|------|------|------|------|------|--|
| Gnd speed-Kts | 70 | 90 | 100 | 120 | 140 | 160 | |
| GS | 3.00 [^] | 377 | 485 | 539 | 647 | 862 | |
| LU NDB to MAP | 5.4 | 4:38 | 3:36 | 3:14 | 2:42 | 2:19 | |

| STRAIGHT-IN LANDING RWY 23 | | | | CIRCLE-TO-LAND | |
|----------------------------|------|---------------------------------|--|----------------|--------------------|
| ILS DA(H) 432' (200') | | LOC (GS out) MDA(H) 670' (438') | | | |
| | FULL | ALS out | | Max Kts | MDA(H) |
| A | | | | 100 | 980' (742') 1600m |
| B | | | | 135 | 980' (742') 2000m |
| C | 800m | 1200m | | 180 | 1020' (782') 3600m |
| D | | | | 205 | 1120' (882') 4800m |

PANS OPS 3

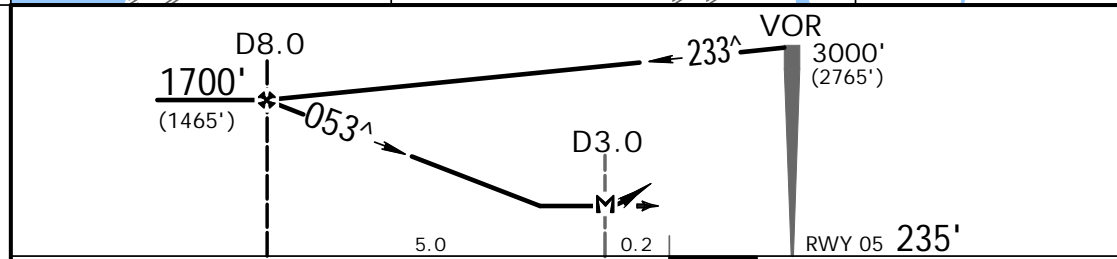
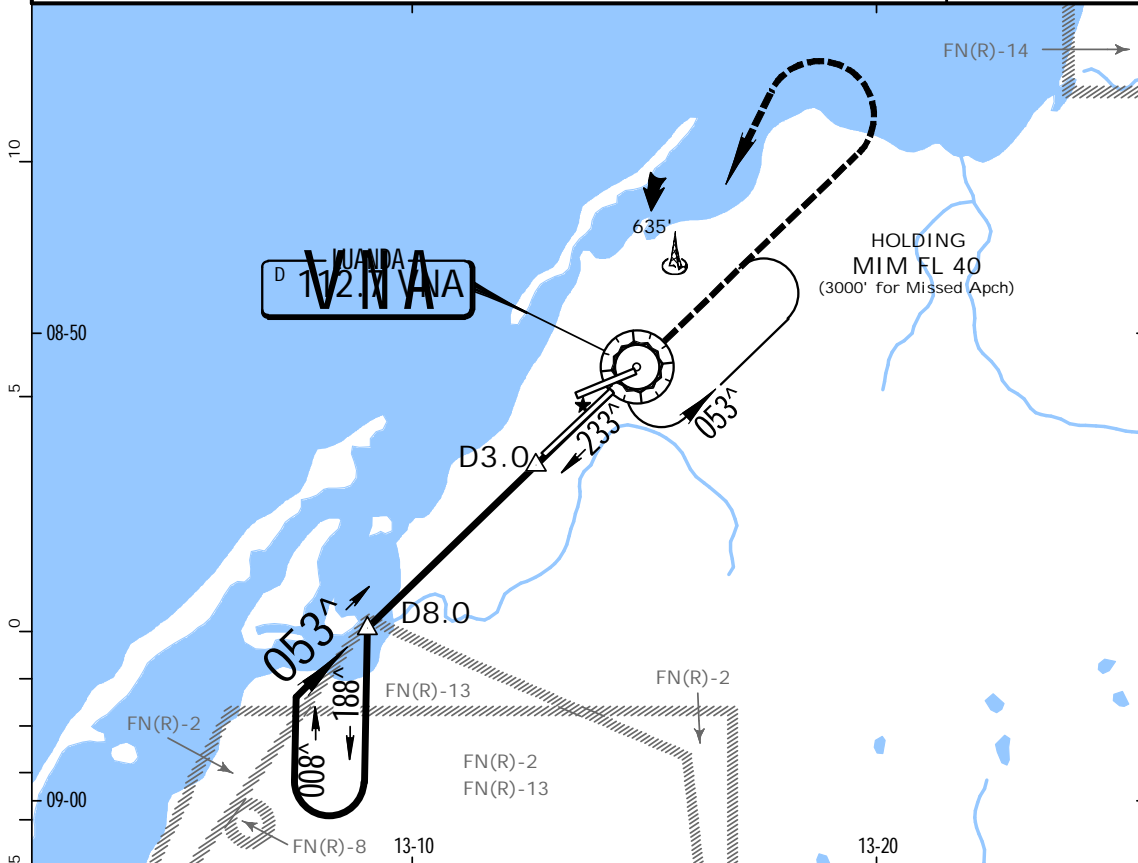
Notice: After 1/24/2002 0901Z this chart should not be used without first checking JeppView or NOTAMs.

FNLU
4TH OF FEBRUARY

JEPPESEN
14 JAN 00 (13-1) .Eff.27.Jan.

LUANDA, ANGOLA
VOR DME Rwy 05

| | | | | | |
|--|---------------------------------------|--------------------------------------|--------------------------|---------------------------|-------|
| LUANDA Approach 119.1 | | LUANDA Tower 118.1 | | *Ground 121.9 | |
| VOR VNA 112.7 | Final Apch Crs 053 [^] | Minimum Alt D8.0 1700' (1465') | MDA(H) 600' (365') | Apt Elev 238' RWY 235' | 2500' |
| MISSED APCH: Climb on runway heading to 2500', then climbing turn LEFT to VOR to 3000' and hold, or as directed. | | | | | |
| Alt Set: MB | Rwy Elev: 9 MB | Trans level: By ATC | Trans alt: 3000' (2765') | MSA VNA VOR | |



| | | | | | | |
|-------------|--|--|--|------------------|-------|--------|
| MAP at D3.0 | | | | ALS VASI VASI | 2500' | Rwy |
| | | | | | ↑ | on hdg |

| STRAIGHT-IN LANDING RWY 05 | | | CIRCLE-TO-LAND | |
|----------------------------|--------------------|---------|----------------|--------------------|
| A | MDA(H) 600' (365') | ALS out | Max Kts. | MDA(H) |
| A | | | 100 | 980' (742') 1600m |
| B | 1600m | | 135 | 980' (742') 2000m |
| C | | | 180 | 1020' (782') 3600m |
| D | 2000m | | 205 | 1120' (882') 4800m |

PANS OPS 3

Notice: After 1/24/2002 0901Z this chart should not be used without first checking JeppView or NOTAMs.

FNLU

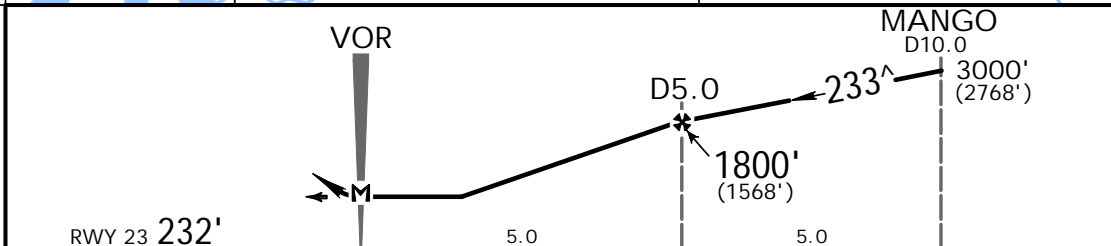
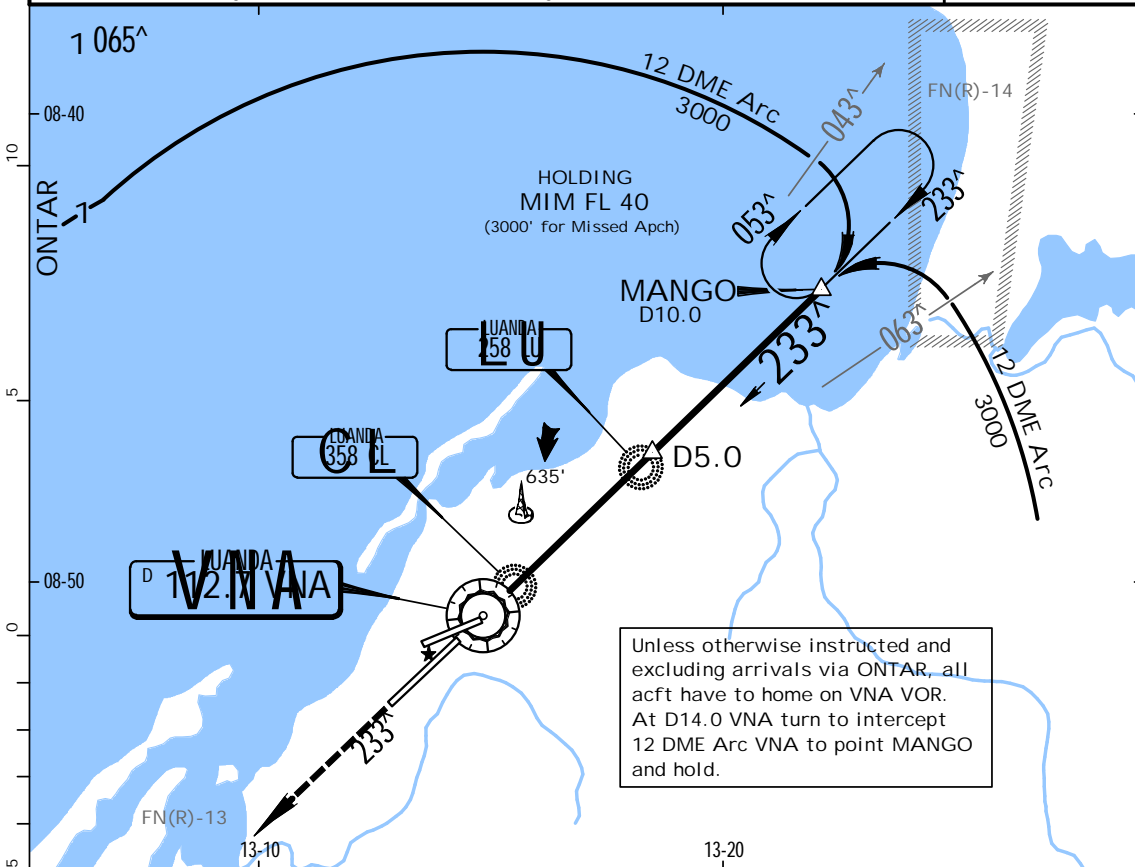
4TH OF FEBRUARY

JEPPESEN

14 JAN 00 (13-2) .Eff.27.Jan.

LUANDA, ANGOLA
VOR DME Rwy 23

| | | | | | |
|--|---------------------------------------|--------------------------------------|-----------------------|---------------------------|------------------|
| LUANDA Approach 119.1 | | LUANDA Tower 118.1 | | | *Ground 121.9 |
| VOR VNA 112.7 | Final Apch Crs 233 [^] | Minimum Alt D5.0 1800' (1568') | MDA(H) 670' (438') | Apt Elev 238' RWY 232' | 2500' |
| MISSED APCH: Climb on R-233 to D10.0, then turn RIGHT to intercept 12 DME Arc climbing to 3000'. Continue to MANGO and hold, or as directed. | | | | | |
| Alt Set: MB | | Rwy Elev: 8 MB | Trans level: By ATC | Trans alt: 3000' (2768') | MSA VNA VOR |



| | | | | | | | |
|-----------------------------|-----|-----|-----|-----|-----|-----|---|
| Gnd speed-Kts | 70 | 90 | 100 | 120 | 140 | 160 | TO DISPLACED THRESHOLD HIALS VASI VASI D10.0 on VNA 112.7 R-233 |
| Desc Grad D10.0 - D5.0 4.0% | 284 | 365 | 405 | 486 | 567 | 648 | |
| Desc Grad after D5.0 5.0% | 354 | 456 | 506 | 608 | 709 | 810 | |

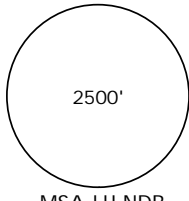
| | | | | |
|----------------------------|-------|---------|----------------|--------------------|
| STRAIGHT-IN LANDING RWY 23 | | | CIRCLE-TO-LAND | |
| MDA(H) 670' (438') | | | Max Kts | MDA(H) |
| A | | ALS out | 100 | 980' (742') 1600m |
| B | 800m | 1600m | 135 | 980' (742') 2000m |
| C | 1200m | 2000m | 180 | 1020' (782') 3600m |
| D | 1600m | 2400m | 205 | 1120' (882') 4800m |

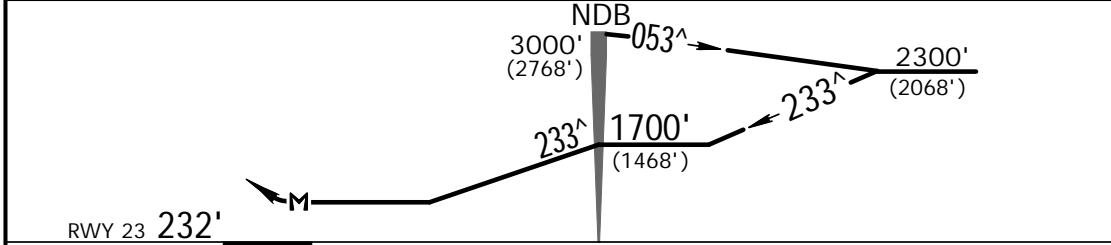
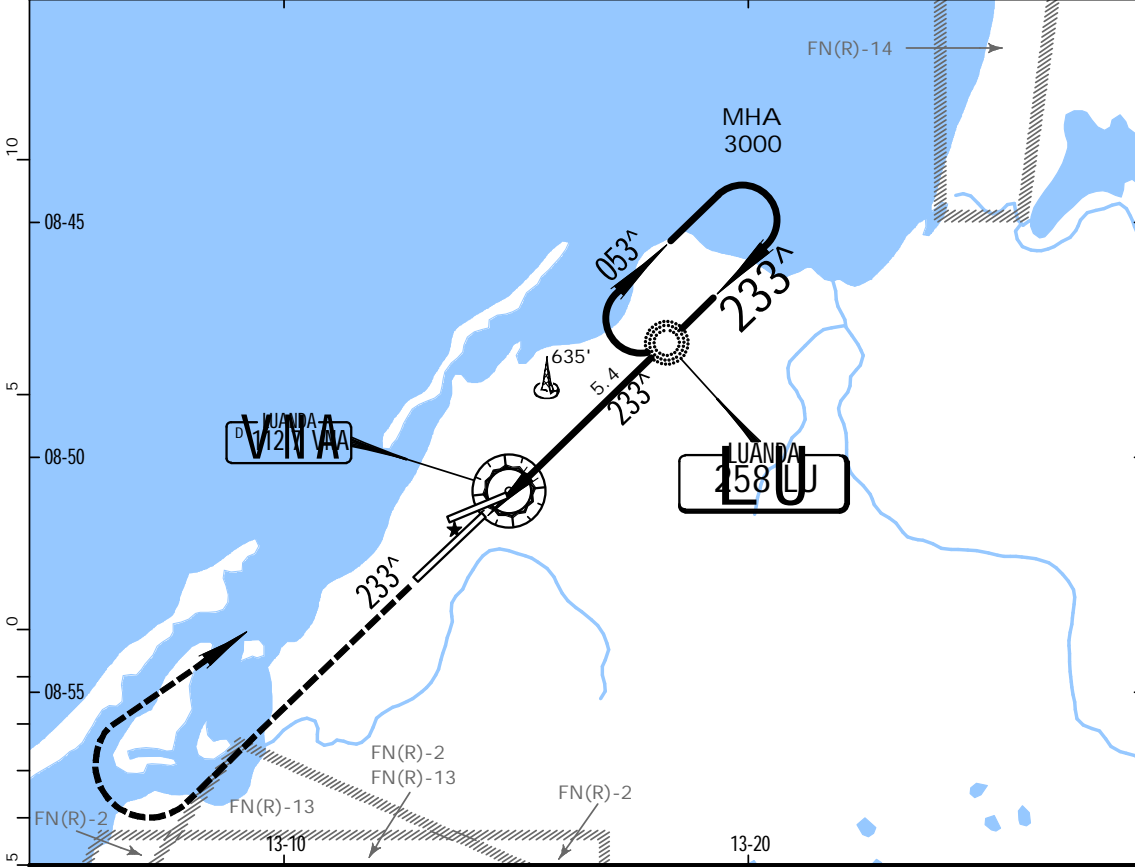
PANS OPS 3


FNLU
4TH OF FEBRUARY

JEPPESEN
14 JAN 00 (16-1) .Eff.27.Jan.

LUANDA, ANGOLA
NDB Rwy 23

| | | | | | |
|---|----------------------------------|--|------------------------------|--|--|
| LUANDA Approach 119.1 | | LUANDA Tower 118.1 | | | *Ground 121.9 |
| NDB LU 258 | Final Apch Crs 233^ | Minimum Alt NDB 1700' (1468') | MDA(H) 730' (498') | Apt Elev 238' RWY 232' |  2500' MSA LU NDB |
| MISSED APCH: Climb on runway heading to 2500', then climbing turn RIGHT to NDB to 3000' and hold, or as directed. | | | | | |
| Alt Set: MB | | Rwy Elev: 8 MB | Trans level: By ATC | Trans alt: 3000' (2768') | |



| | | | | | | | |
|---------------|-----|------|------|------|------|------|--|
| Gnd speed-Kts | 70 | 90 | 100 | 120 | 140 | 160 | TO DISPLACED THRESHOLD  2500' on hdg Rwy |
| NDB to MAP | 5.4 | 4:38 | 3:36 | 3:14 | 2:42 | 2:19 | |

| STRAIGHT-IN LANDING RWY 23 | | | CIRCLE-TO-LAND | |
|----------------------------|---------------------------|---------|----------------|---------------------------|
| | MDA(H) 730' (498') | ALS out | Max Kts | MDA(H) |
| A | | 1600m | 100 | 980' (742') 1600m |
| B | 1200m | 2000m | 135 | 980' (742') 2000m |
| C | | 2400m | 180 | 1020' (782') 3600m |
| D | 2000m | 2400m | 205 | 1120' (882') 4800m |

PANS OPS 3

Notice: After 1/24/2002 0901Z this chart should not be used without first checking JeppView or NOTAMs.

FNLU

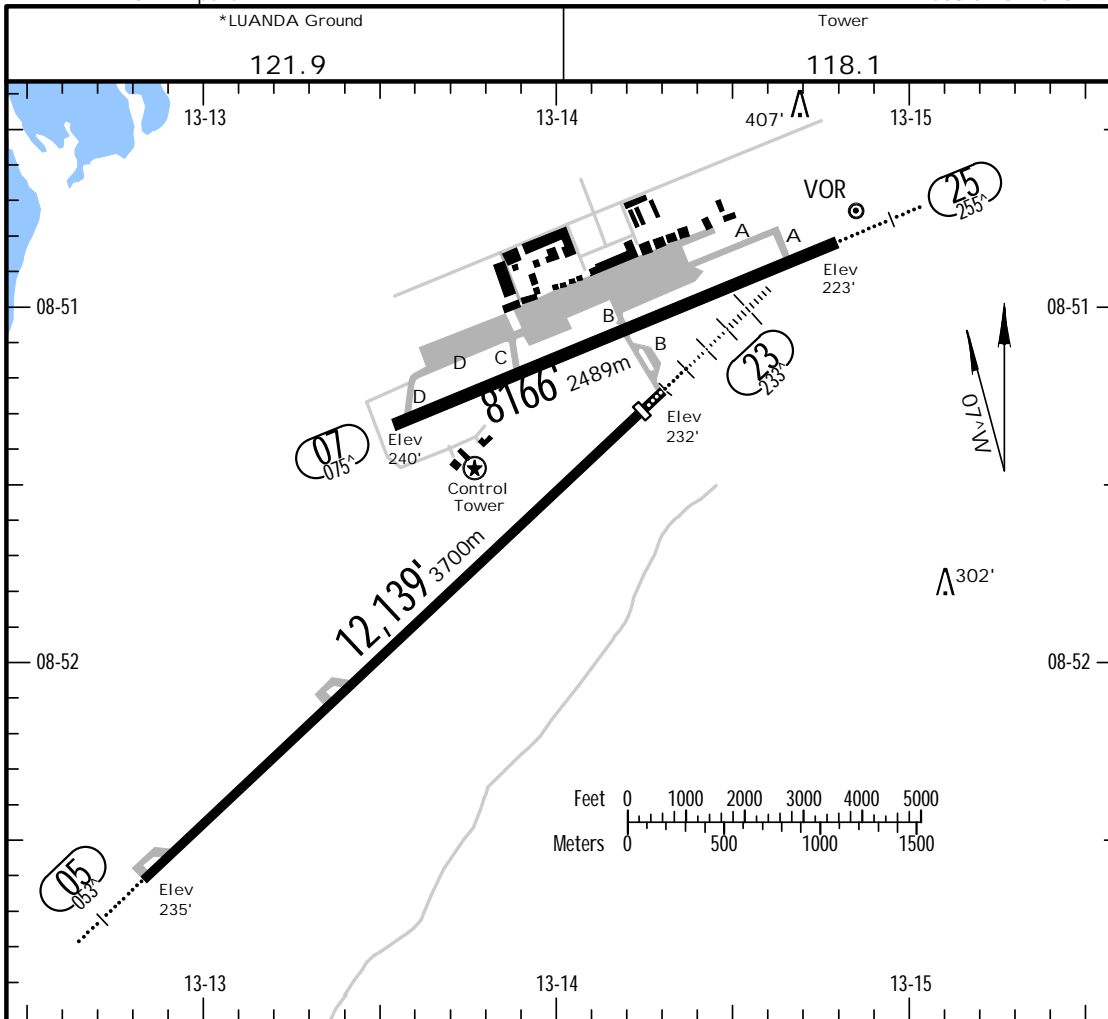
Apt Elev 238'
VNA 112.7 - On Airport

JEPPESEN

14 JAN 00 (11-1)

LUANDA, ANGOLA

4TH OF FEBRUARY
S08 51.3 E013 14.0



ADDITIONAL RUNWAY INFORMATION

| RWY | HIRL | CL | ALS | VASI | USABLE LENGTHS | | TAKE-OFF | WIDTH |
|-----|------|----|-----|-------|----------------|---------------|----------|-------------|
| | | | | | Threshold | Glide Slope | | |
| 05 | | | | 3 bar | | | | 148' 45m |
| 23 | | | 1 | 3 bar | 11,646' 3550m | 10,559' 3218m | | |
| 07 | | | | | | | | 197' 60m |
| 25 | | | | | | | | |

1 ALS-(red) also available.

TAKE-OFF

| | AIR CARRIER | |
|---|-----------------------------------|--------------------------|
| | Rwy 05/23 LVP must be in force | All Rwys |
| | RL & CL | RCLM (DAY only) or RL |
| A | | |
| B | 200m | 400m |
| C | | |
| D | 250m | 300m |