

Airport information:

Country: Tunisia

City: TUNIS

Coordinates: N 36° 51.1', E010 13.6

Elevation: 21

Customs: Customs

Fuel: Jet A1

RFF: CAT 9

hours: AD SEP-JUN: MON-FRI 0700-1600, JUL-AUG: MON-FRI 0600-1200, ATC H24.

Runways:

Runway 01

Takeoff length: 3200, Landing length: 3200

Runway 11

Takeoff length: 2640, Landing length: 2840

Runway 19

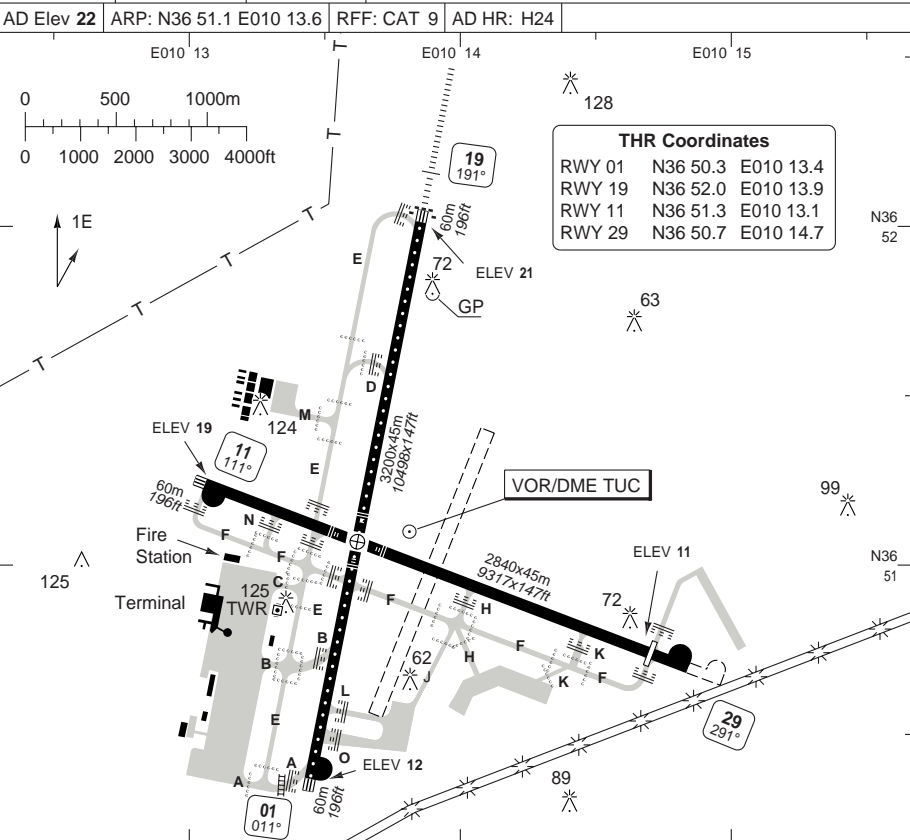
Takeoff length: 3200, Landing length: 3200

Runway 29

Takeoff length: 2840, Landing length: 2640

AERODROME

Tunis GND 121.9	Airport 118.1	ATIS 118.675
AD Elev 22	ARP: N36 51.1 E010 13.6	RFF: CAT 9
		AD HR: H24



RWY 01	N36 50.3	E010 13.4
RWY 19	N36 52.0	E010 13.9
RWY 11	N36 51.3	E010 13.1
RWY 29	N36 50.7	E010 14.7

RWY	Slope	TORA m/ft	LDA m/ft	ALS	REDL	RCLL	Additional
01	+0.1	3200 / 10498	3200 / 10498	-	H	18m	P 3°
19	-0.1	3200 / 10498	3200 / 10498	H-H	H	18m	P 3°
11	-0.1	2640 / 8661	2840 / 9317	-	H	-	P 3.5°
29	+0.1	2840 / 9317	2640 / 8661	-	H	-	P 3°

EU OPS TAKE OFF MINIMA

RWY	Facilities	RVR		
		A B C	D	
01/19	RCLL + REDL	LVTO	200m	250m
	RCL (day only) or RCL + REDL	LVTO	250m	300m
All	RCL (day only) or RCL + REDL		400m	400m
	NIL (day only)		500m	500m

© Navtech - dttat01laorg0

Change: New spec.

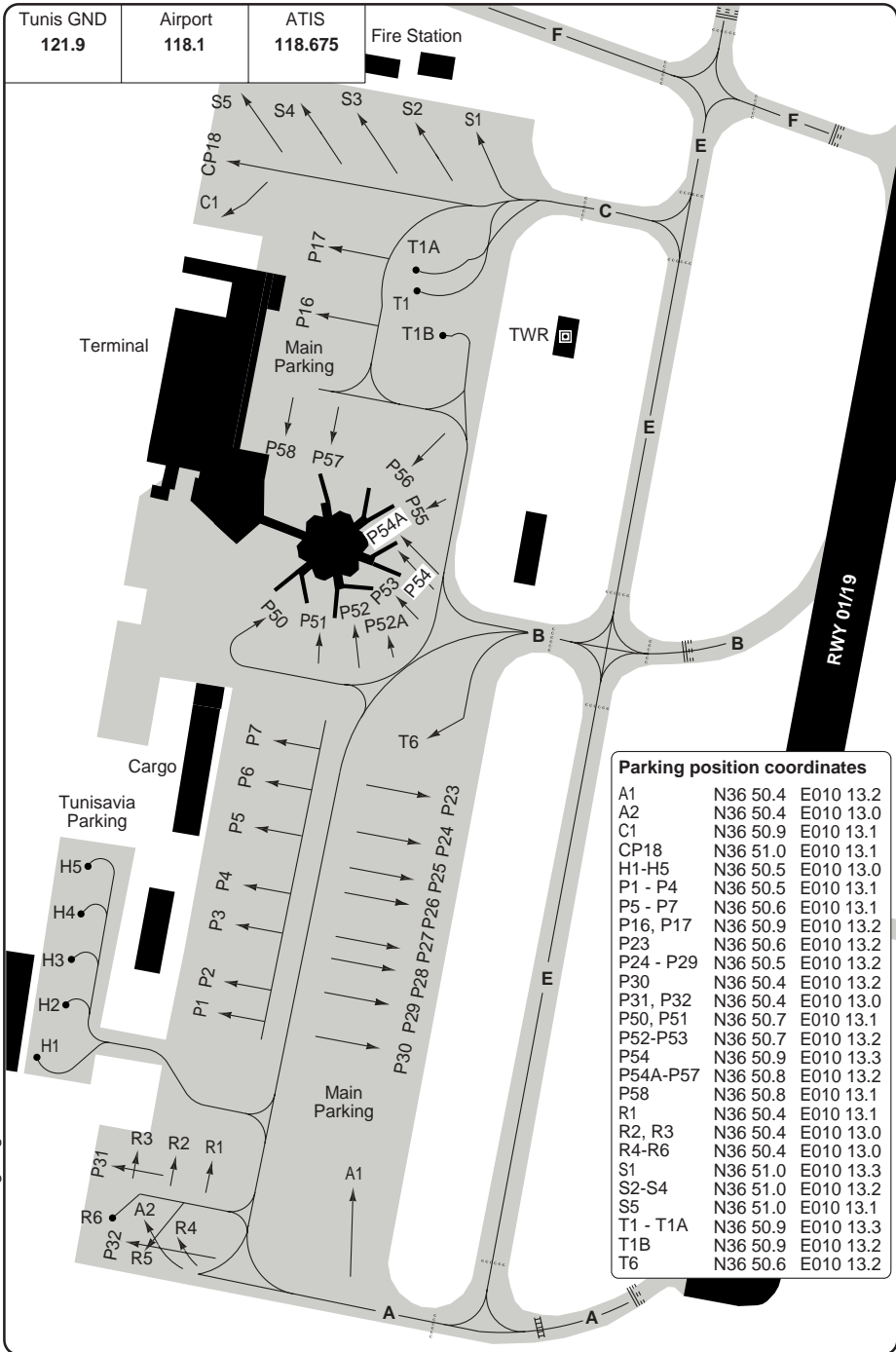
THIS CHART IS A PART OF NAVIGRAPH NDAC AND IS INTENDED FOR FLIGHT SIMULATION USE ONLY

AERODROME

GENERAL

- 1. WARNING**
High Terrain southeast of aerodrome.
- 2. PREFERENTIAL RUNWAY SYSTEM**
Runway 01 for Take-off
Runway 29 for Landing
- 3. WARNING**
Runway 29: Lights on road south of aerodrome. Do not mistake for runway.
- 4. PARKING**
Stands P1 to P58 and CP18 are nose-in stands.
Push-back is compulsory unless otherwise advised by ATC.
- 5. NOISE ABATEMENT PROCEDURE ARRIVAL**
Visual approach Runway 11 to be established on centreline outside 10nm from threshold, minimum 3000ft.
- 6. NOISE ABATEMENT PROCEDURE DEPARTURE**
ICAO standard Noise Abatement Procedure (NADP 1) applies.
- 7. TAXIWAY WIDTHS**
Taxiways A, B, C, D and E are 22.5m wide.

GROUND Main Parking



Parking position coordinates

A1	N36 50.4	E010 13.2
A2	N36 50.4	E010 13.0
C1	N36 50.9	E010 13.1
CP18	N36 51.0	E010 13.1
H1-H5	N36 50.5	E010 13.0
P1 - P4	N36 50.5	E010 13.1
P5 - P7	N36 50.6	E010 13.1
P16, P17	N36 50.9	E010 13.2
P23	N36 50.6	E010 13.2
P24 - P29	N36 50.5	E010 13.2
P30	N36 50.4	E010 13.2
P31, P32	N36 50.4	E010 13.0
P50, P51	N36 50.7	E010 13.1
P52-P53	N36 50.7	E010 13.2
P54	N36 50.9	E010 13.3
P54A-P57	N36 50.8	E010 13.2
P58	N36 50.8	E010 13.1
R1	N36 50.4	E010 13.1
R2, R3	N36 50.4	E010 13.0
R4-R6	N36 50.4	E010 13.0
S1	N36 51.0	E010 13.3
S2-S4	N36 51.0	E010 13.2
S5	N36 51.0	E010 13.1
T1 - T1A	N36 50.9	E010 13.3
T1B	N36 50.9	E010 13.2
T6	N36 50.6	E010 13.2

© Navitech - dttta03gaorg0

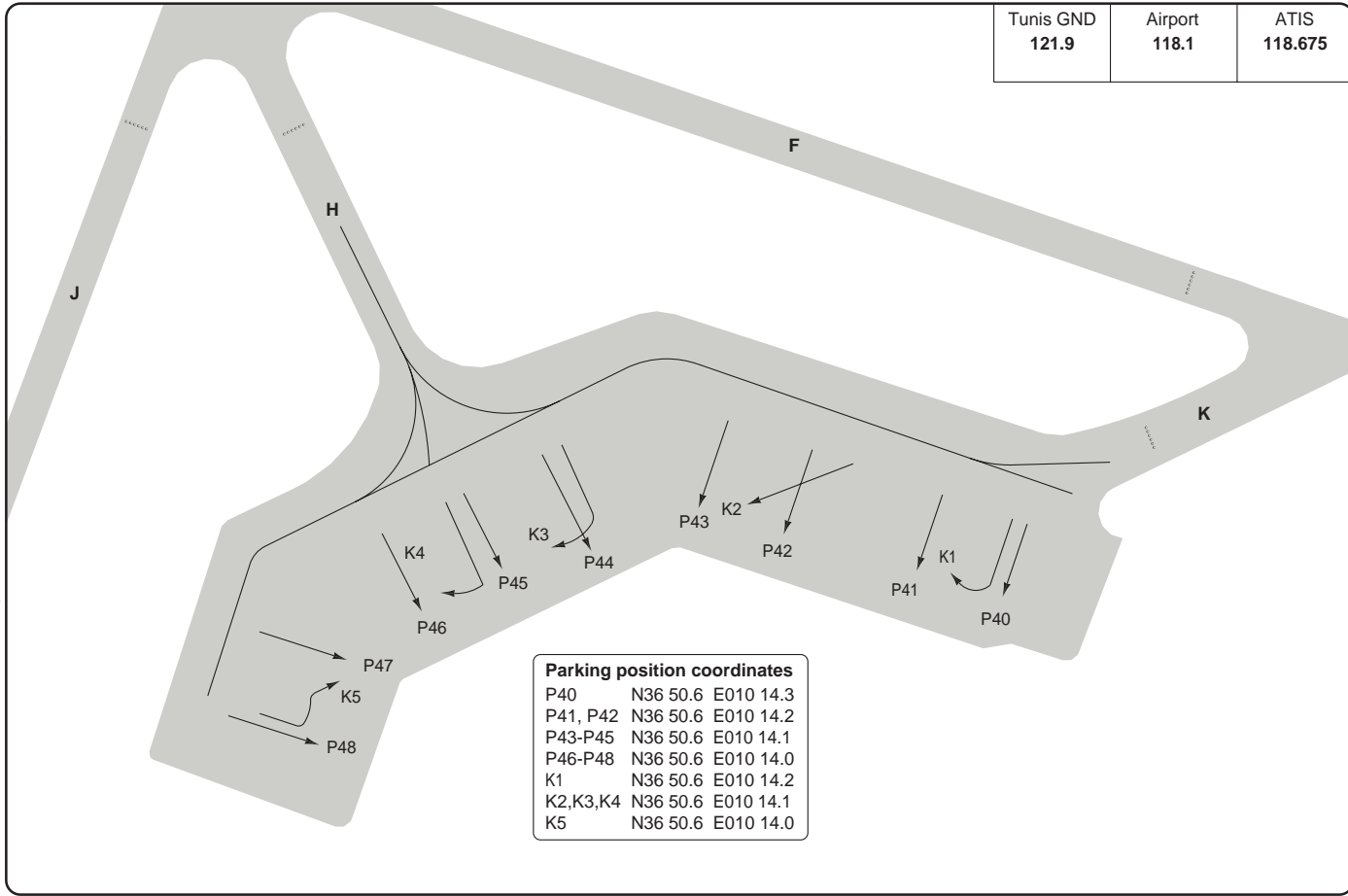
Change: New spec.

THIS CHART IS A PART OF NAVIGRAPH NDAC AND IS INTENDED FOR FLIGHT SIMULATION USE ONLY

10 - 4 | 02 JUL 09

Tunisia - DTTA / TUN
Carthage
TUNIS

GROUND Former Parking

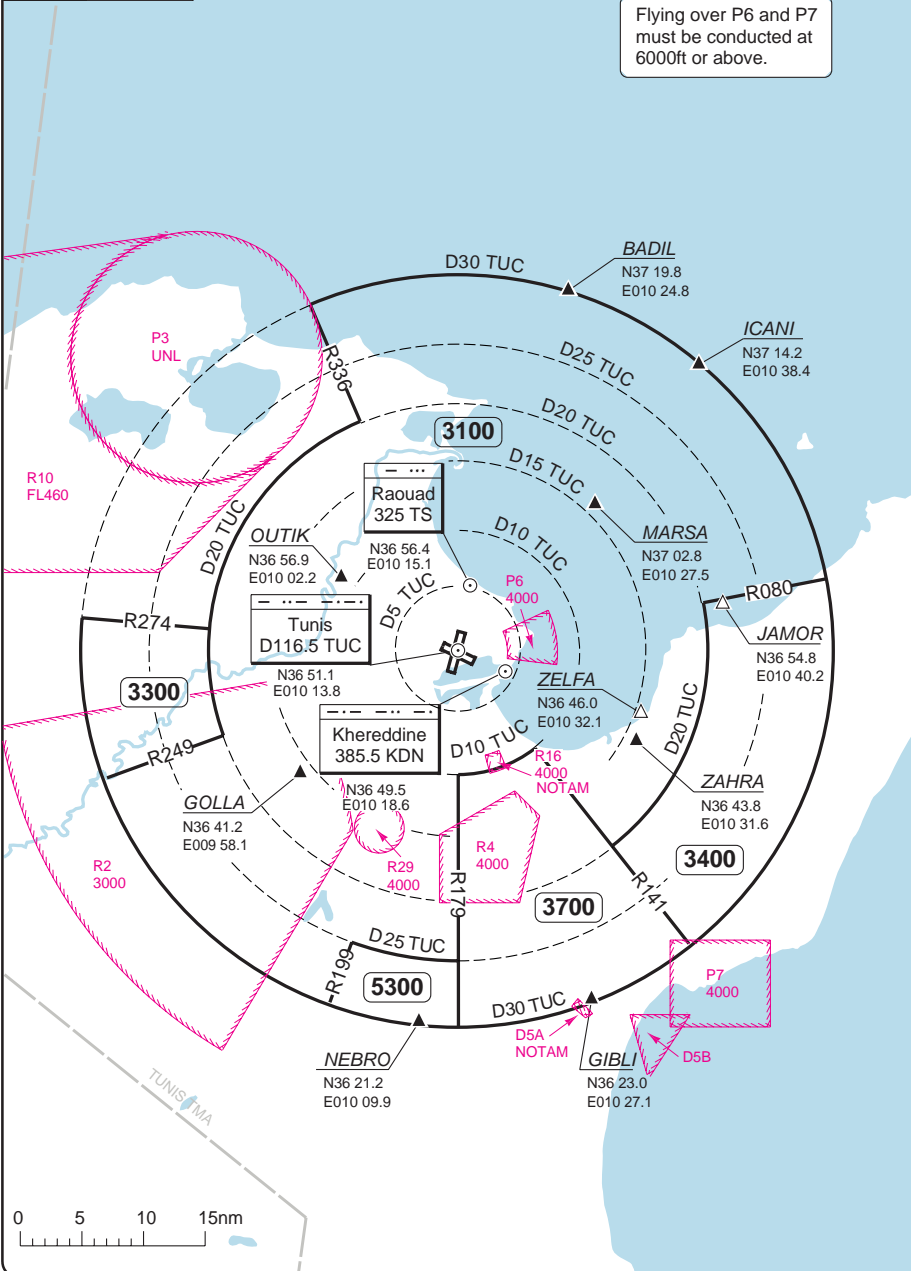


RADAR Minimum Altitudes

Tunis APP	Airport	GND	ATIS
121.2	118.1	121.9	118.675
119.5			

TL ATC AD Elev 22

Flying over P6 and P7 must be conducted at 6000ft or above.



© Navitech - dittra01vaorgo

Reverse side blank

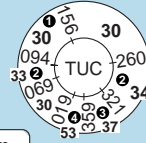
Change: D5A, R2.

THIS CHART IS A PART OF NAVIGRAPH NDAC AND IS INTENDED FOR FLIGHT SIMULATION USE ONLY

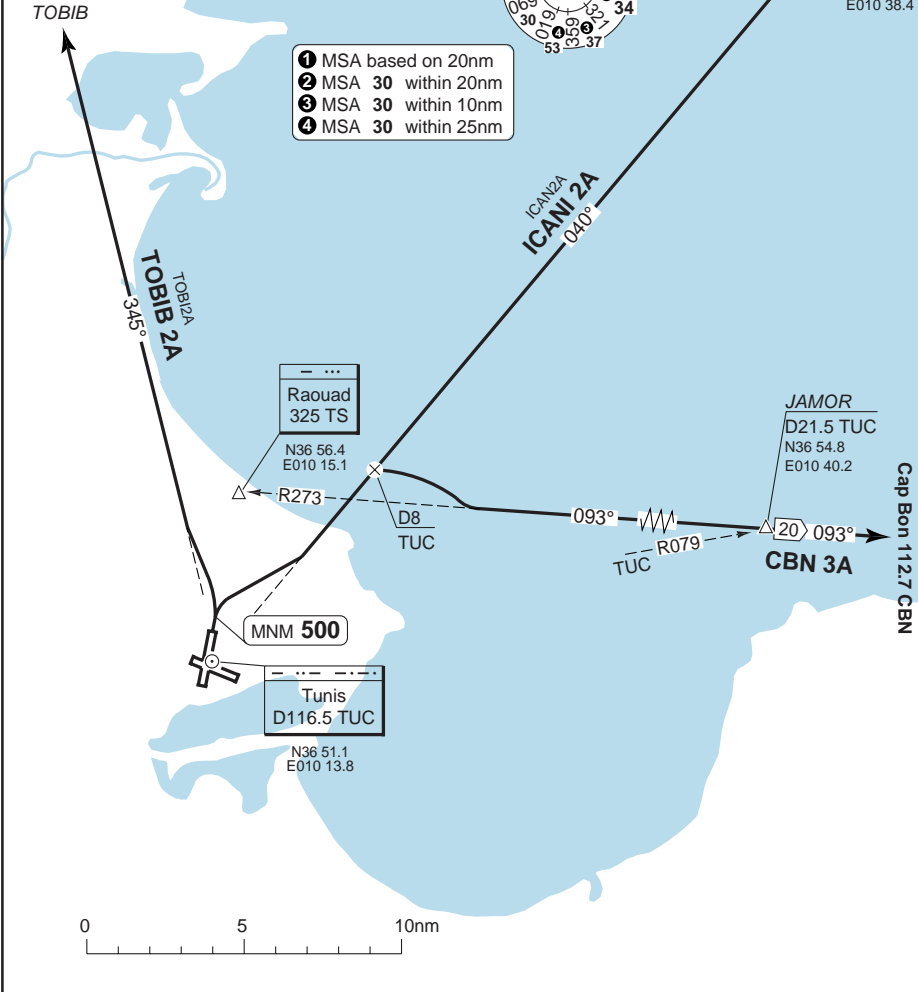
SID RWY 01 North, East

Tunis GND 121.9	Airport 118.1	APP 121.2 119.5	ATIS 118.675
--------------------	------------------	-----------------------	-----------------

TA 6000 | AD Elev 22



- ① MSA based on 20nm
- ② MSA 30 within 20nm
- ③ MSA 30 within 10nm
- ④ MSA 30 within 25nm



SPEED: Max 250kt below **FL100**
MNM CLIMB GRADIENT: 6% until **3000**
ALT RESTRICTION: No turns below **500**

SID	Routeing
CBN 3A	Climb on 011°, turn right to intercept R040 TUC - at D8 TUC turn right to follow 093° from TS - CBN
ICANI 2A	Climb on 011°, turn right to intercept R040 TUC - ICANI
TOBIB 2A	Climb on 011°, turn left to intercept R345 TUC - TOBIB

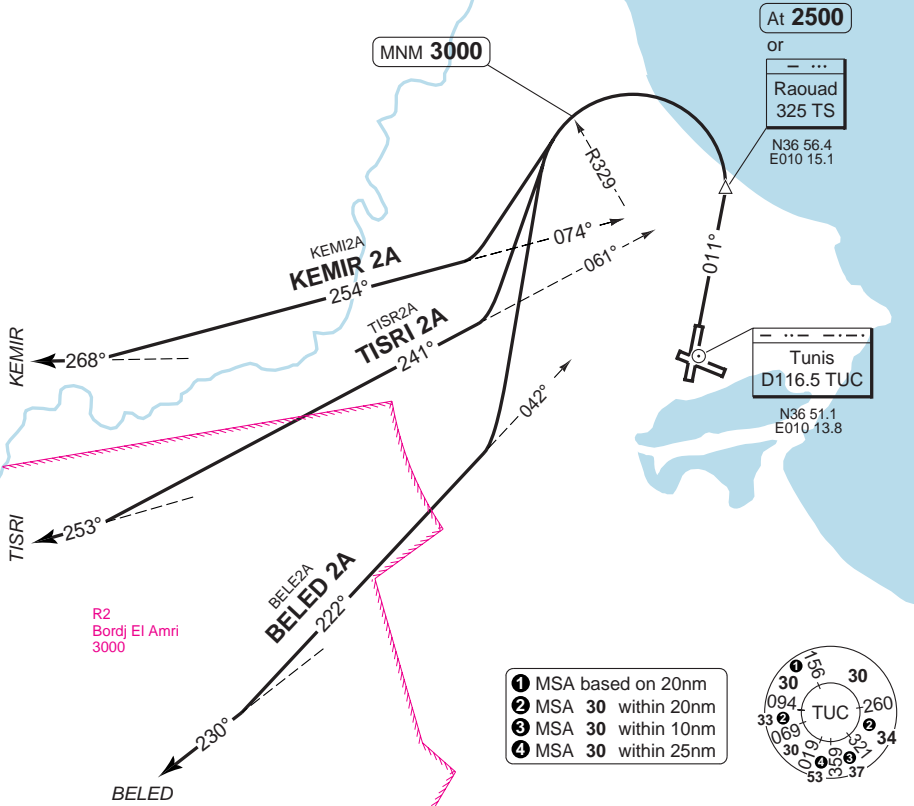
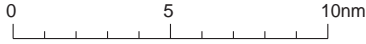
© Navitech - ditaa01daorgo

Change: ZEMBA 3A deleted.

SID RWY 01 West

Tunis GND 121.9	Airport 118.1	APP 121.2 119.5	ATIS 118.675
---------------------------	-------------------------	-------------------------------------	------------------------

TA **6000** | AD Elev **22**



SPEED: Max 250kt below **FL100**
MNM CLIMB GRADIENT: 6% until **3000**
ALT RESTRICTION: No turns below **500**

SID	Routeing	Altitudes
BELED 2A	Climb on 011° - at 2500 or TS (whichever is first) turn left to follow 222° from TS - intercept R230 TUC - BELED	Cross R329 TUC MNM 3000
KEMIR 2A	Climb on 011° - at 2500 or TS (whichever is first) turn left to follow 254° from TS - intercept R268 TUC - KEMIR	Cross R329 TUC MNM 3000
TISR 2A	Climb on 011° - at 2500 or TS (whichever is first) turn left to follow 241° from TS - intercept R253 TUC - TISR	Cross R329 TUC MNM 3000

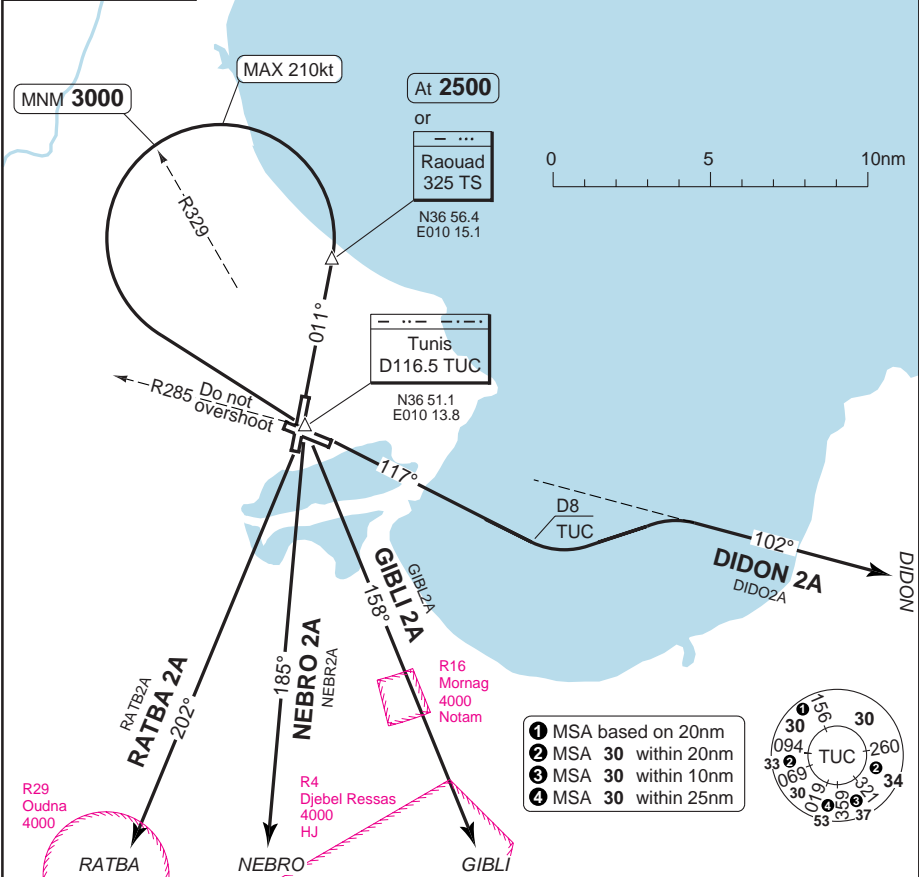
© Navtech - ditra02daorgo

Change: New spec.

SID RWY 01 South, East

Tunis GND 121.9	Airport 118.1	APP 121.2 119.5	ATIS 118.675
---------------------------	-------------------------	-------------------------------------	------------------------

TA **6000** AD Elev **22**



SPEED: Max 250kt below FL100

MNM CLIMB GRADIENT: 6% until 3000

ALT RESTRICTION: No turns below 500

INITIAL CLIMB: Climb on 011° - at 2500 or TS (whichever is first) turn left (Max 210kt) to TUC (do not overshoot R285 TUC) - follow SID

SID	Routeing	Altitudes
DIDON 2A	Join R117 TUC - at D8 TUC turn left to intercept R102 TUC - DIDON	Cross R329 TUC MNM 3000
GIBLI 2A	Turn right on R158 TUC - GIBLI	Cross R329 TUC MNM 3000
NEBRO 2A	Turn right on R185 TUC - NEBRO	Cross R329 TUC MNM 3000
RATBA 2A	Turn right on R202 TUC - RATBA	Cross R329 TUC MNM 3000

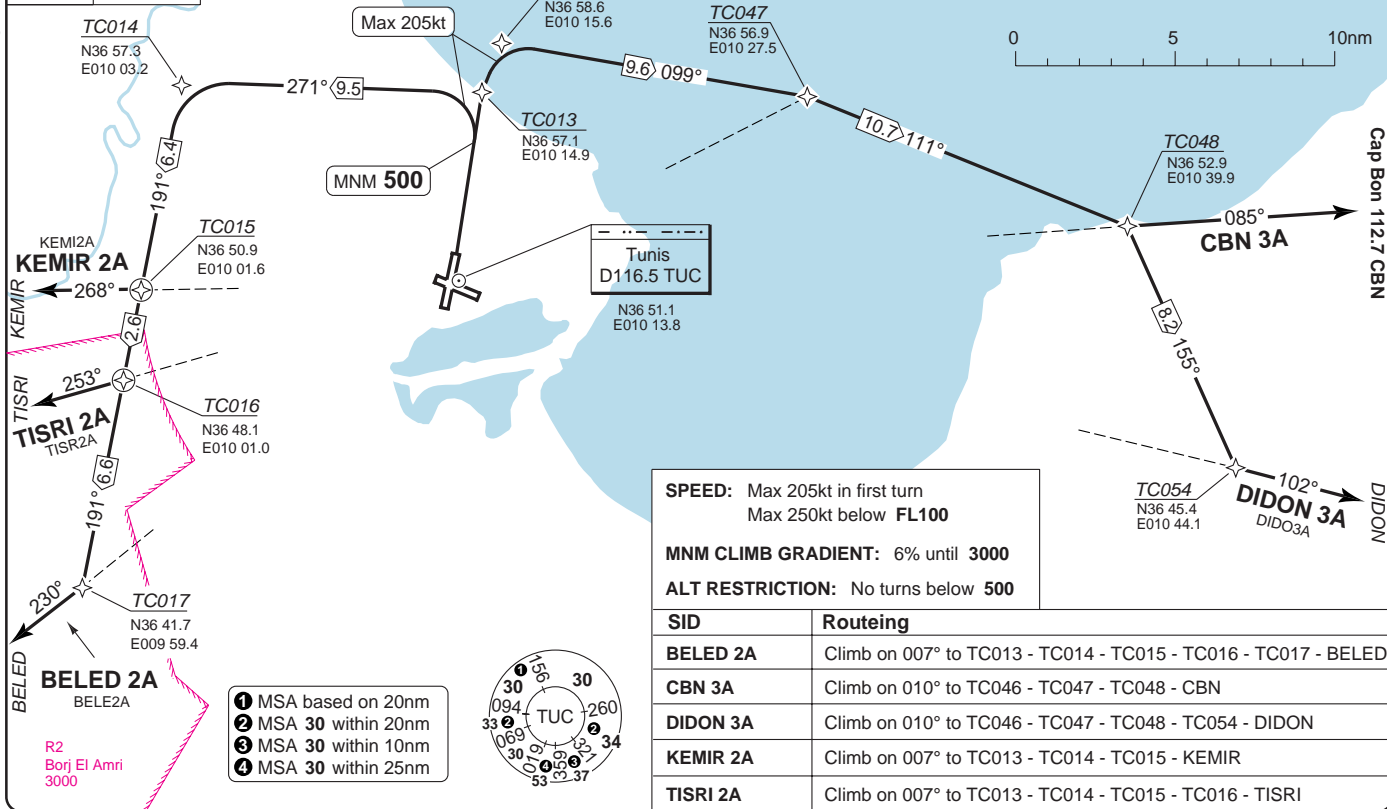
© Navitech - dttta03daorgo

Change: New spec.

THIS CHART IS A PART OF NAVIGRAPH NDAC AND IS INTENDED FOR FLIGHT SIMULATION USE ONLY

Tunis GND 121.9	Airport 118.1	APP 121.2 119.5	ATIS 118.675
--------------------	------------------	-----------------------	-----------------

TA 6000 AD Elev 22

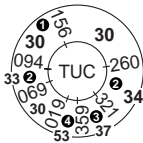


SPEED: Max 205kt in first turn
Max 250kt below FL100

MNM CLIMB GRADIENT: 6% until 3000

ALT RESTRICTION: No turns below 500

SID	Routeing
BELED 2A	Climb on 007° to TC013 - TC014 - TC015 - TC016 - TC017 - BELED
CBN 3A	Climb on 010° to TC046 - TC047 - TC048 - CBN
DIDON 3A	Climb on 010° to TC046 - TC047 - TC048 - TC054 - DIDON
KEMIR 2A	Climb on 007° to TC013 - TC014 - TC015 - KEMIR
TISR1 2A	Climb on 007° to TC013 - TC014 - TC015 - TC016 - TISR1



Change: New print

© Navtech - dttta05daorg0

Tunis GND 121.9	Airport 118.1	APP 121.2 119.5	ATIS 118.675
--------------------	------------------	-----------------------	-----------------

TA 6000 AD Elev 22



MNM 3000

Tunis
D116.5 TUC

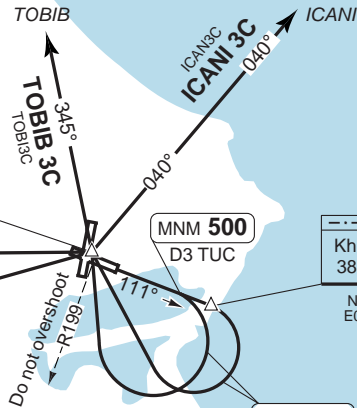
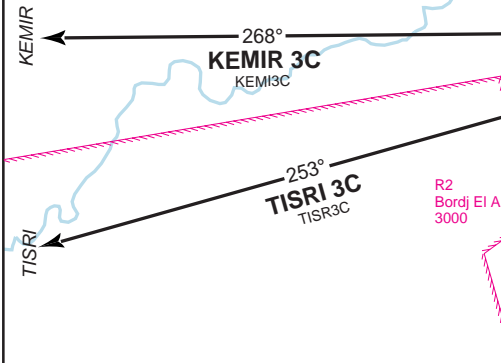
N36 51.1
E010 13.8

MNM 500
D3 TUC

Khereddine
385.5 KDN

N36 49.5
E010 18.6

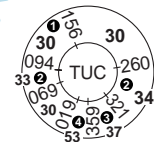
MAX 210kt



SPEED: Max 250kt below FL100
MNM CLIMB GRADIENT: 6% until 3000

ALT RESTRICTION: No turns below 500
INITIAL CLIMB: Climb on 111° - follow SID

- 1 MSA based on 20nm
- 2 MSA 30 within 20nm
- 3 MSA 30 within 10nm
- 4 MSA 30 within 25nm



SID	Routeing	Altitudes
ICANI 3C	No later than D3 TUC turn right (Max 210kt) to TUC (do not overshoot R199 TUC) - turn right on R040 TUC - ICANI	TUC MNM 3000
KEMIR 3C	No later than KDN turn right (Max 210kt) to TUC (do not overshoot R199 TUC) - turn left on R268 TUC - KEMIR	TUC MNM 3000
TISRI 3C	No later than KDN turn right (Max 210kt) to TUC (do not overshoot R199 TUC) - turn left on R253 TUC - TISRI	TUC MNM 3000
TOBIB 3C	No later than D3 TUC turn right (Max 210kt) to TUC (do not overshoot R199 TUC) - join R345 TUC - TOBIB	TUC MNM 3000

SID Rwy 11 North, East, West

30 - 5 | 05 JAN 10

Tunisia - DTTA / TUN
Carthage TUNIS

30 - 6 | 02 JUL 09

Tunisia - DTTA / TUN
Carthage **TUNIS**

SID RWY 11 South, East

Tunis GND 121.9	Airport 118.1	APP 121.2 119.5	ATIS 118.675
--------------------	------------------	-----------------------	-----------------

TA 6000 AD Elev 22



Tunis
D116.5 TUC

N36 51.1
E010 13.8

MNM 500
D3 TUC

111°

117°

189°

MAX 210kt

R16
Mornag
4000
Notam

GIBLI 2C
GIBLI 2C

158°

R4
Djebel Ressas
4000

GIBLI

CBN 2C

085°

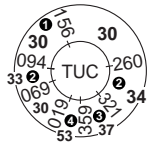
Cap Bon 112.7 CBN

DIDON 2C
DIDO2C

102°

DIDON

- ① MSA based on 20nm
- ② MSA 30 within 20nm
- ③ MSA 30 within 10nm
- ④ MSA 30 within 25nm



SPEED: Max 250kt below FL100
MNM CLIMB GRADIENT: 6% until 3000
ALT RESTRICTION: No turns below 500

SID	Routeing
CBN 2C	Climb on 111° and intercept R117 TUC - at D8 TUC turn left to intercept R085 TUC - CBN
DIDON 2C	Climb on 111° and intercept R117 TUC - at D8 TUC turn left to intercept R102 TUC - DIDON
GIBLI 2C	Climb on 111°, then (no later than D3 TUC) turn right onto 189° - (Max 210kt) - turn left to intercept R158 TUC - GIBLI

© Navtech - dttad6daorg

Change: New spec.

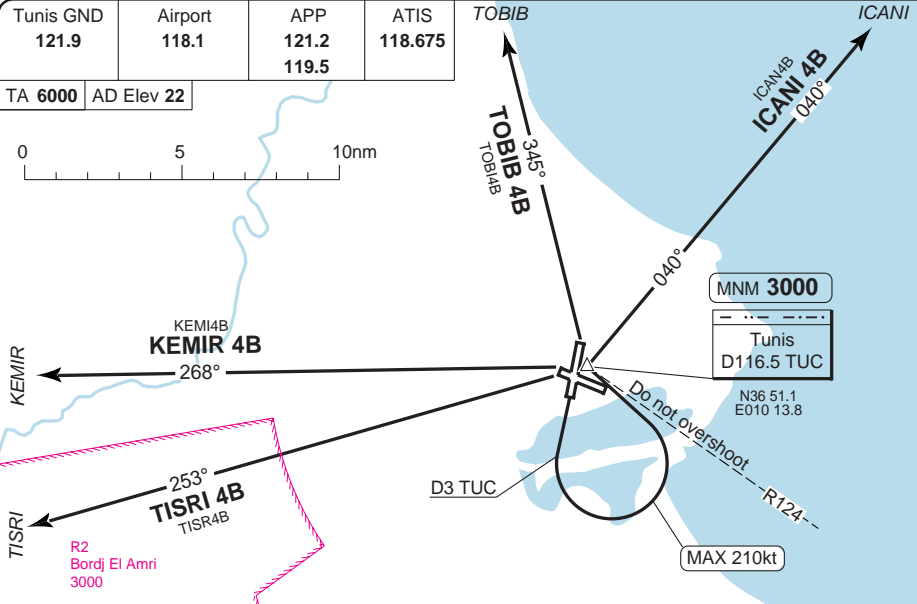
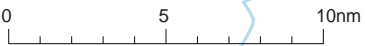
THIS CHART IS A PART OF NAVIGRAPH NDAC AND IS INTENDED FOR FLIGHT SIMULATION USE ONLY

Change: ZEMBA 5B deleted.

© Navtech - dttta09daorg0

Tunis GND 121.9	Airport 118.1	APP 121.2 119.5	ATIS 118.675
--------------------	------------------	-----------------------	-----------------

TA 6000 AD Elev 22



MNM 3000

Tunis
D116.5 TUC

N36 51.1
E010 13.8

Do not overshoot - R124 -
MAX 210kt

SPEED: Max 250kt below **FL100**

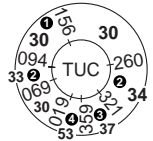
MNM CLIMB GRADIENT: 6% until **3000**

ALT RESTRICTION: No turns below **500**

INITIAL CLIMB: Climb on 191° - at D3 TUC turn left (Max 210kt) to TUC (do not overshoot R124 TUC) - follow SID

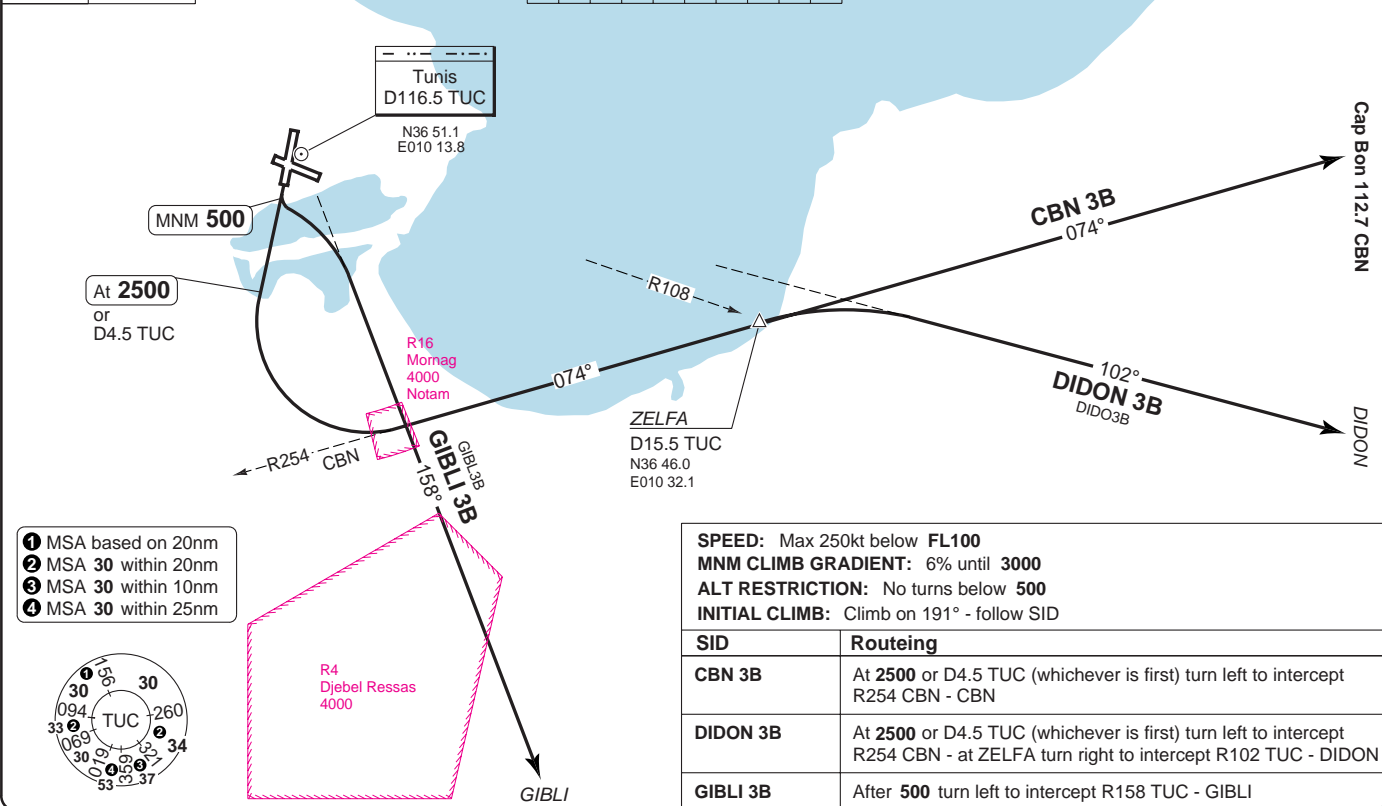
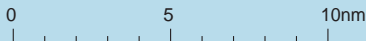
SID	Routeing	Altitudes
ICANI 4B	Turn right on R040 TUC - ICANI	TUC MNM 3000
KEMIR 4B	Turn left on R268 TUC - KEMIR	TUC MNM 3000
TISR 4B	Turn left on R253 TUC - TISR	TUC MNM 3000
TOBIB 4B	Turn right on R345 TUC - TOBIB	TUC MNM 3000

- ① MSA based on 20nm
- ② MSA 30 within 20nm
- ③ MSA 30 within 10nm
- ④ MSA 30 within 25nm

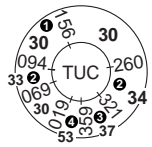


Tunis GND 121.9	Airport 118.1	APP 121.2 119.5	ATIS 118.675
---------------------------	-------------------------	-------------------------------------	------------------------

TA **6000** AD Elev **22**



- ① MSA based on 20nm
- ② MSA 30 within 20nm
- ③ MSA 30 within 10nm
- ④ MSA 30 within 25nm

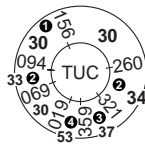
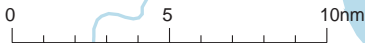


SPEED: Max 250kt below FL100 MNM CLIMB GRADIENT: 6% until 3000 ALT RESTRICTION: No turns below 500 INITIAL CLIMB: Climb on 191° - follow SID	
SID	Routeing
CBN 3B	At 2500 or D4.5 TUC (whichever is first) turn left to intercept R254 CBN - CBN
DIDON 3B	At 2500 or D4.5 TUC (whichever is first) turn left to intercept R254 CBN - at ZELFA turn right to intercept R102 TUC - DIDON
GIBLI 3B	After 500 turn left to intercept R158 TUC - GIBLI

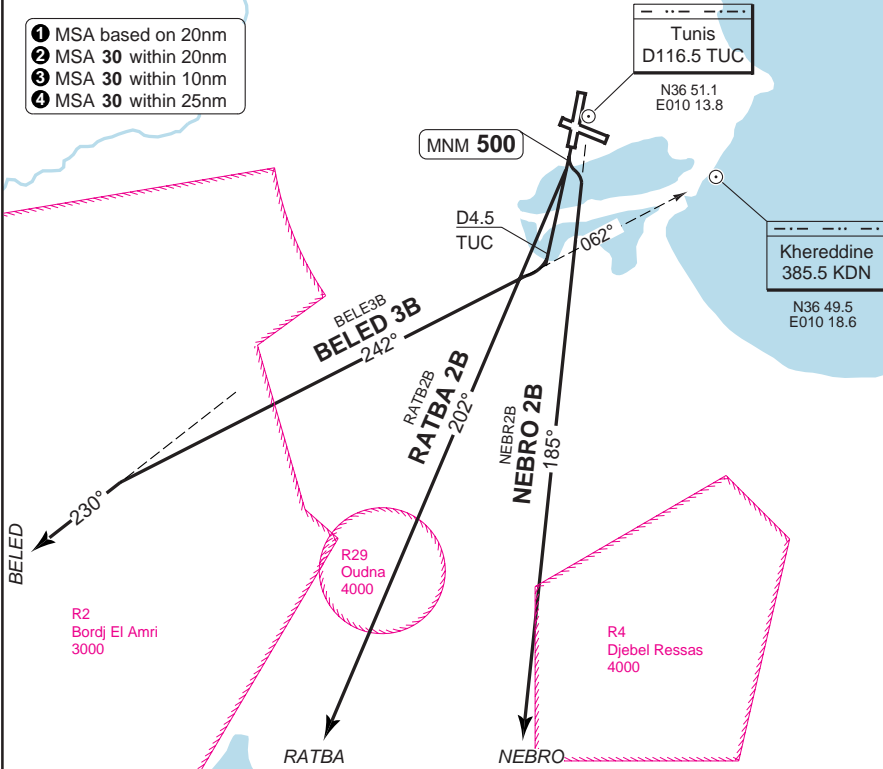
SID RWY 19 South, West

Tunis GND 121.9	Airport 118.1	APP 121.2 119.5	ATIS 118.675
---------------------------	-------------------------	-------------------------------------	------------------------

TA **6000** | AD Elev **22**



- ① MSA based on 20nm
- ② MSA 30 within 20nm
- ③ MSA 30 within 10nm
- ④ MSA 30 within 25nm



SPEED: Max 250kt below **FL100**
MNM CLIMB GRADIENT: 6% until **3000**
ALT RESTRICTION: No turns below **500**
INITIAL CLIMB: Climb on 191° - follow SID

SID	Routeing
BELED 3B	At D4.5 TUC turn right onto 242° KDN - intercept R230 TUC - BELED
NEBRO 2B	At 500 turn left to intercept R185 TUC - NEBRO
RATBA 2B	At 500 turn right to intercept R202 TUC - RATBA

© Navitech - ditta11daorg0

Change: New spec.

Tunisia DTTA / TUN
Carthage **TUNIS**

30 - 12 | 04 SEP 09

WEF 24 SEP 09
SID RWY 19 RNAV

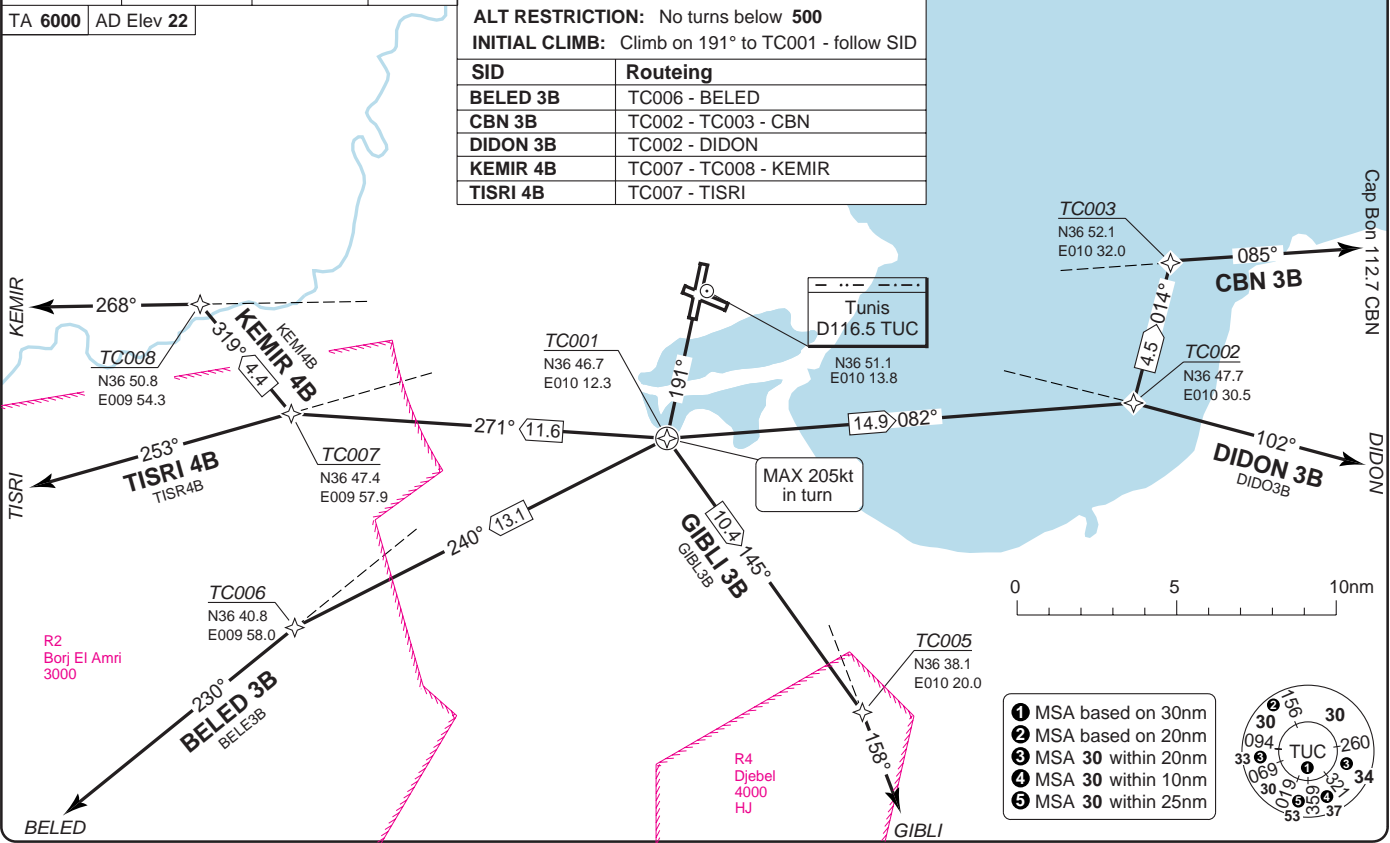
Tunis GND 121.9	Airport 118.1	APP 121.2 119.5	ATIS 118.675
---------------------------	-------------------------	-------------------------------------	------------------------

TA **6000** AD Elev **22**

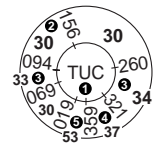
SPEED: Max 205kt in first turn
Max 250kt below **FL100**
MNM CLIMB GRADIENT: 6% until **3000**
ALT RESTRICTION: No turns below **500**
INITIAL CLIMB: Climb on 191° to TC001 - follow SID

Procedure on request

SID	Routeing
BELED 3B	TC006 - BELED
CBN 3B	TC002 - TC003 - CBN
DIDON 3B	TC002 - DIDON
KEMIR 4B	TC007 - TC008 - KEMIR
TISRi 4B	TC007 - TISRi



- 1 MSA based on 30nm
- 2 MSA based on 20nm
- 3 MSA 30 within 20nm
- 4 MSA 30 within 10nm
- 5 MSA 30 within 25nm



Change: ZEMBA 4B deleted.

THIS CHART IS A PART OF NAVIGRAPH NDAC AND IS INTENDED FOR FLIGHT SIMULATION USE ONLY

WEF 24 SEP 09

30 - 13 | 04 SEP 09

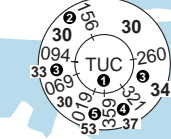
Tunisia - DTTA / TUN
Carthage **TUNIS**

SID RWY 29 North, East

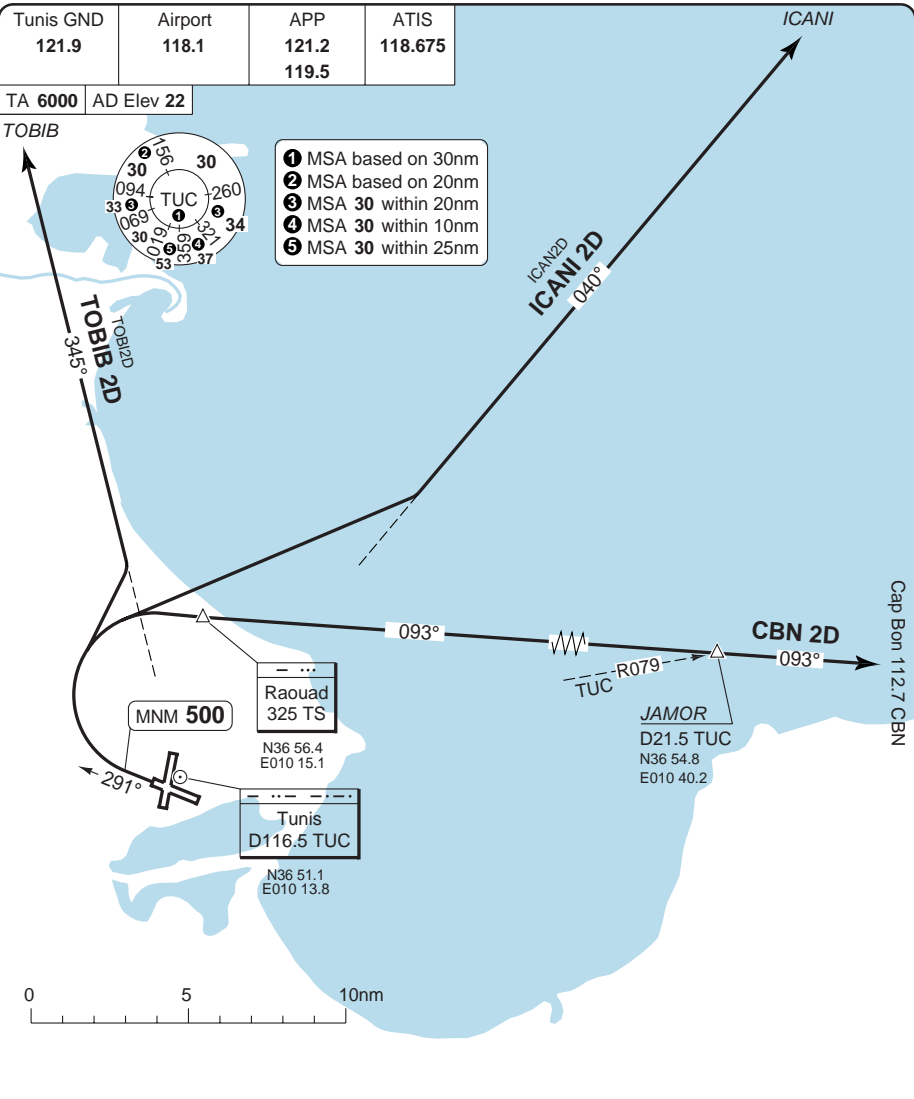
Tunis GND 121.9	Airport 118.1	APP 121.2 119.5	ATIS 118.675
---------------------------	-------------------------	-------------------------------------	------------------------

TA 6000 | AD Elev 22

TOBIB



- 1 MSA based on 30nm
- 2 MSA based on 20nm
- 3 MSA 30 within 20nm
- 4 MSA 30 within 10nm
- 5 MSA 30 within 25nm



SPEED: Max 250kt below FL100

MNM CLIMB GRADIENT: 6% until 3000

ALT RESTRICTION: No turns below 500

SID	Routeing
CBN 2D	Climb on 291°, turn right to TS - follow 093° TS / R273 CBN - CBN
ICANI 2D	Climb on 291°, turn right to intercept R040 TUC - ICANI
TOBIB 2D	Climb on 291°, turn right to intercept R345 TUC - TOBIB

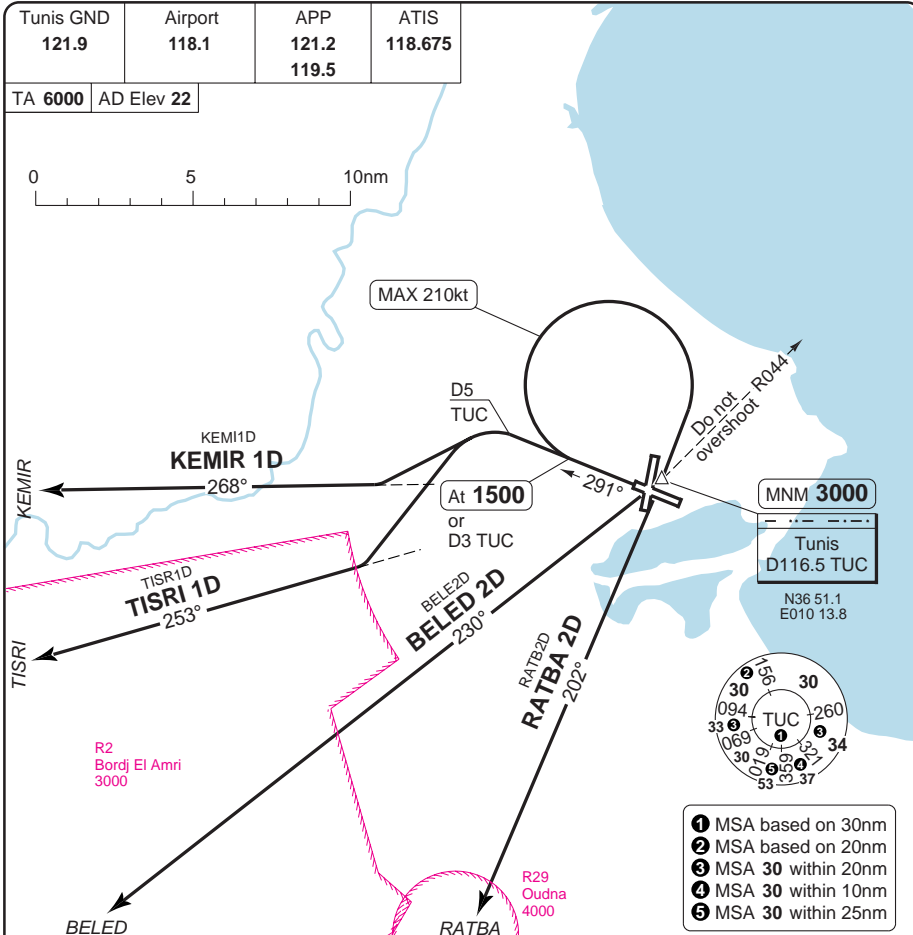
Change: ZEMBA 2D deleted.

THIS CHART IS A PART OF NAVIGRAPH NDAC AND IS INTENDED FOR FLIGHT SIMULATION USE ONLY

SID RWY 29 West

Tunis GND 121.9	Airport 118.1	APP 121.2 119.5	ATIS 118.675
---------------------------	-------------------------	-------------------------------------	------------------------

TA **6000** AD Elev **22**



SPEED: Max 250kt below **FL100**
MNM CLIMB GRADIENT: 6% until **3000**
ALT RESTRICTION: No turns below **500**

SID	Routing	Altitudes
BELED 2D	Climb on 291° - at 1500 or D3 TUC (whichever is first) turn right (Max 210kt) to TUC (do not overshoot R044 TUC) - join R230 TUC to BELED	TUC: MNM 3000
KEMIR 1D	Climb on 291° - at D5 TUC turn left to intercept R268 TUC - KEMIR	
RATBA 2D	Climb on 291° - at 1500 or D3 TUC (whichever is first) turn right (Max 210kt) to TUC (do not overshoot R044 TUC) - join R202 TUC to RATBA	TUC: MNM 3000
TISRI 1D	Climb on 291° - at D5 TUC turn left to intercept R253 TUC - TISRI	

© Navitech - dttat14daorg0

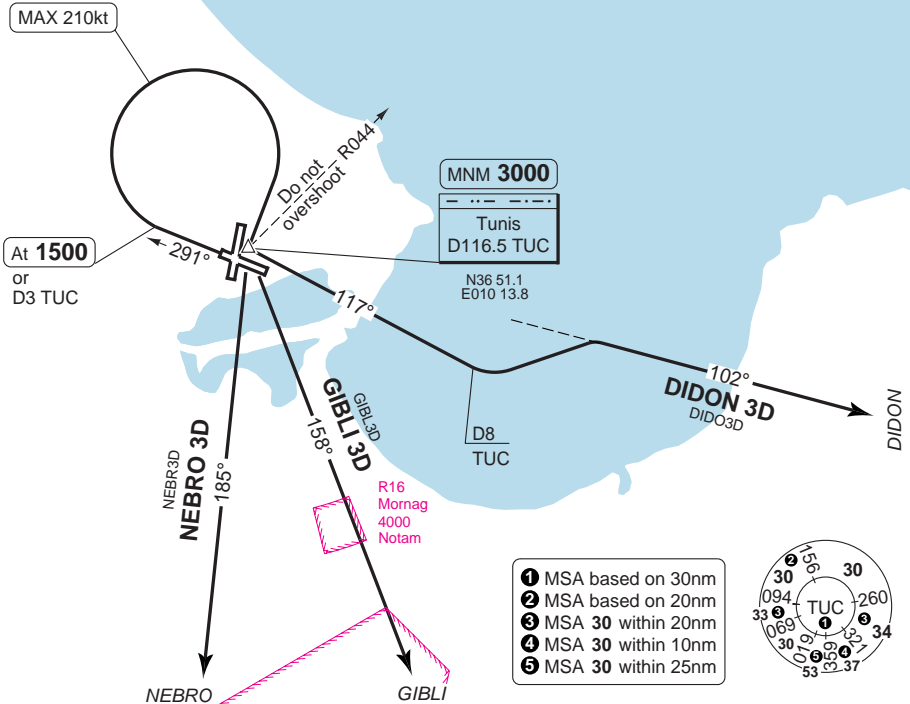
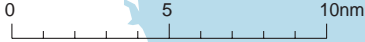
Change: New spec.

THIS CHART IS A PART OF NAVIGRAPH NDAC AND IS INTENDED FOR FLIGHT SIMULATION USE ONLY

SID RWY 29 South, East

Tunis GND 121.9	Airport 118.1	APP 121.2 119.5	ATIS 118.675
---------------------------	-------------------------	-------------------------------------	------------------------

TA **6000** | AD Elev **22**



SPEED: Max 250kt below **FL100**
MNM CLIMB GRADIENT: 6% until **3000**
ALT RESTRICTION: No turns below **500**
INITIAL CLIMB: Climb on 291° - at **1500** or D3 TUC (whichever is first) turn right (Max 210kt) to TUC (do not overshoot R044 TUC) - follow SID

SID	Routeing	Altitudes
DIDON 3D	Turn left on R117 TUC - at D8 TUC turn left to intercept R102 TUC - DIDON	TUC: MNM 3000
GIBLI 3D	Turn left on R158 TUC to GIBLI	TUC: MNM 3000
NEBRO 3D	Turn left on R185 TUC to NEBRO	TUC: MNM 3000

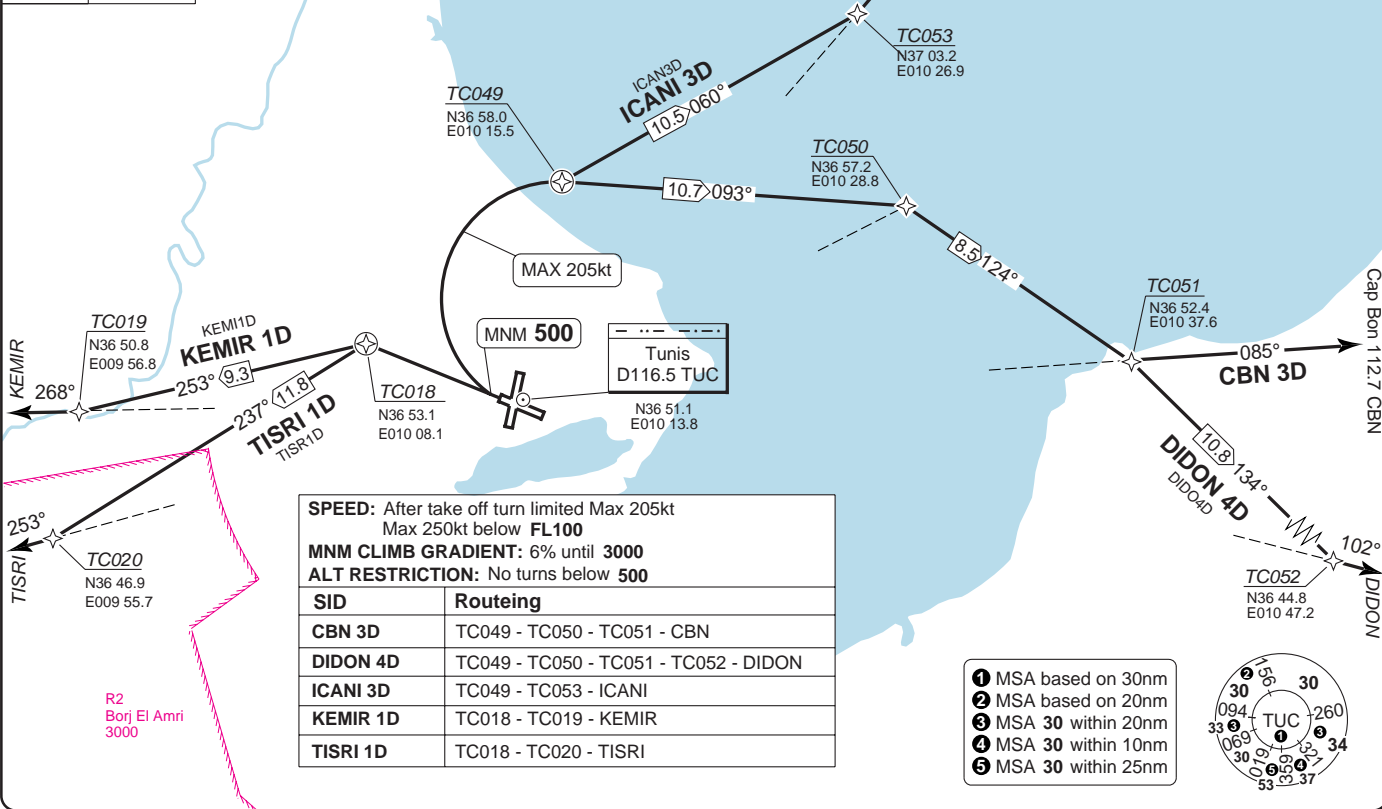
© Navtech - dttta15daorg0

Tunis GND 121.9	Airport 118.1	APP 121.2 119.5	ATIS 118.675
--------------------	------------------	-----------------------	-----------------

TA 6000 AD Elev 22



Procedure on request



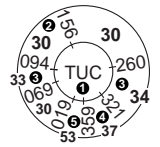
SPEED: After take off turn limited Max 205kt
Max 250kt below FL100

MNM CLIMB GRADIENT: 6% until 3000

ALT RESTRICTION: No turns below 500

SID	Routeing
CBN 3D	TC049 - TC050 - TC051 - CBN
DIDON 4D	TC049 - TC050 - TC051 - TC052 - DIDON
ICANI 3D	TC049 - TC053 - ICANI
KEMIR 1D	TC018 - TC019 - KEMIR
TISR1 1D	TC018 - TC020 - TISR1

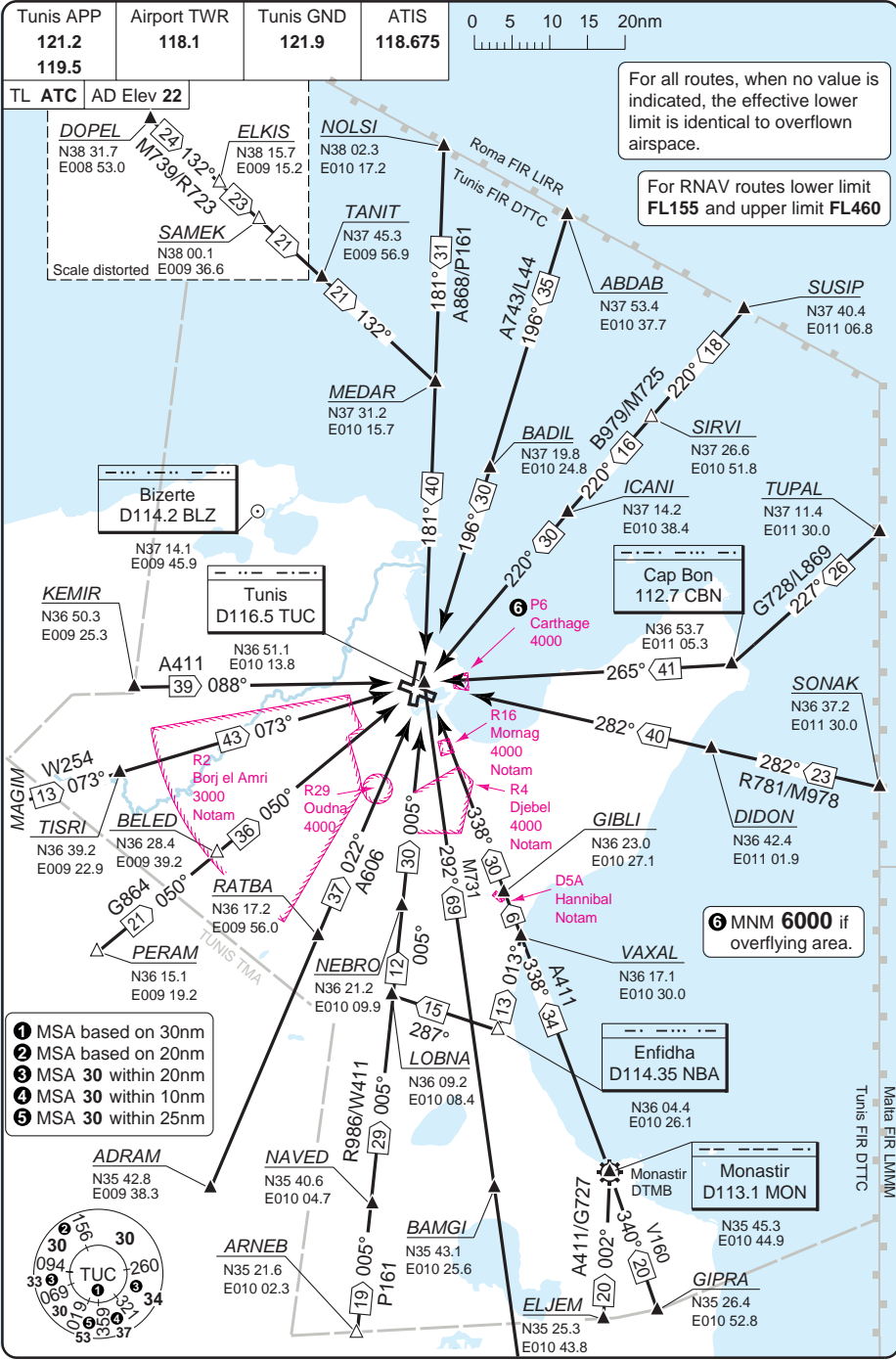
- ① MSA based on 30nm
- ② MSA based on 20nm
- ③ MSA 30 within 20nm
- ④ MSA 30 within 10nm
- ⑤ MSA 30 within 25nm



Change: ZEMBA 3D deleted.

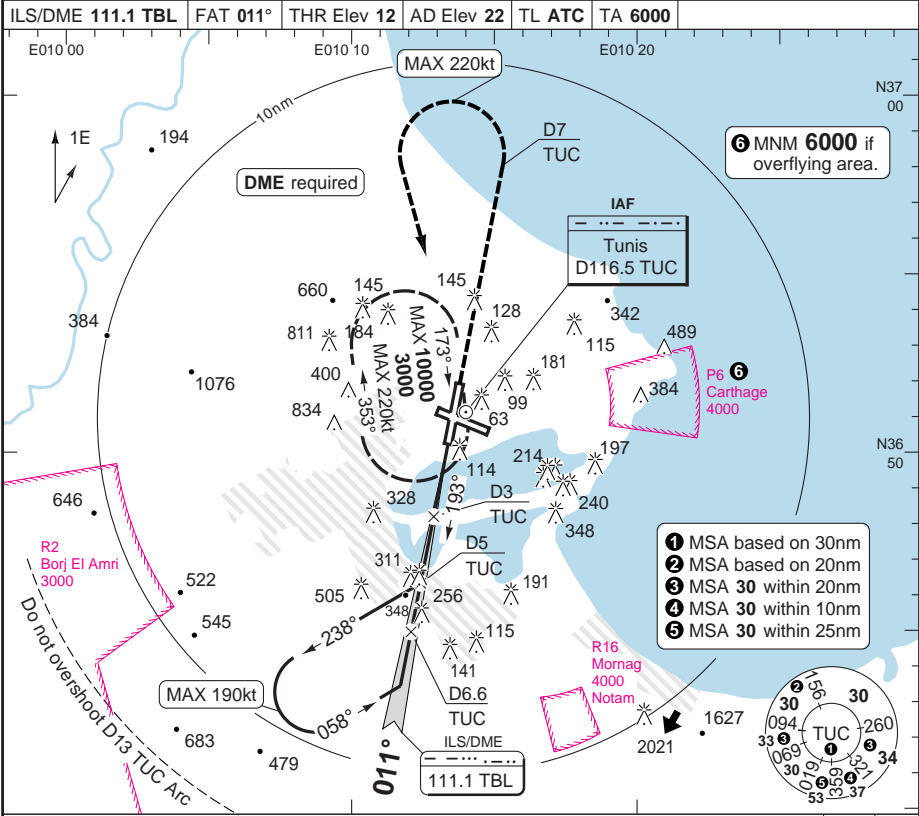
THIS CHART IS A PART OF NAVIGRAPH NDAC AND IS INTENDED FOR FLIGHT SIMULATION USE ONLY

ARRIVAL Routes



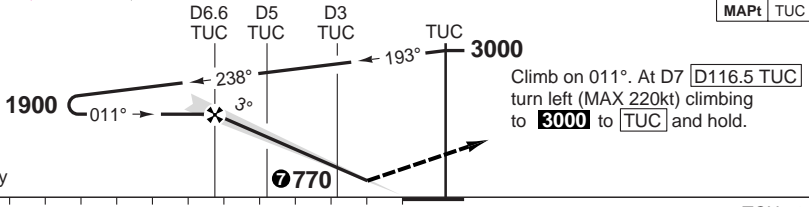
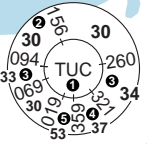
ILS RWY 01 VOR/DME

Tunis APP 121.2 119.5	Airport 118.1	GND 121.9	ATIS 118.675
ILS/DME 111.1 TBL	FAT 011°	THR Elev 12	AD Elev 22
TL ATC	TA 6000		



6 MNM 6000 if overflying area.

- 1** MSA based on 30nm
- 2** MSA based on 20nm
- 3** MSA 30 within 20nm
- 4** MSA 30 within 10nm
- 5** MSA 30 within 25nm



					TCH 52										
nm	12	11	10	9	8	7	6	5	4	3	2	1	0		
ACFT	ILS+DME		LLZ+DME		Circling		a CAT A: 230 (210) 1200m		b CAT A: 550 (530) 1.5km		DME TUC	3.0° ALT	LDA 3200x45 10498x147ft P 3°		
A/B	240 (220) 1200m a		380 (370) 1500m		700 (680) 1.6km b						6	1700			
C	250 (230) 1200m		380 (370) 1800m		1230 (1210) 2.4km						5	1390			
D	260 (240) 1200m		380 (370) 2000m		1230 (1210) 3.6km						4	1070			
GS	80	100	120	140	160							3			
ROD 3.0°	430	540	650	760	860							2	430		
FAF-MAPt	Not Published														

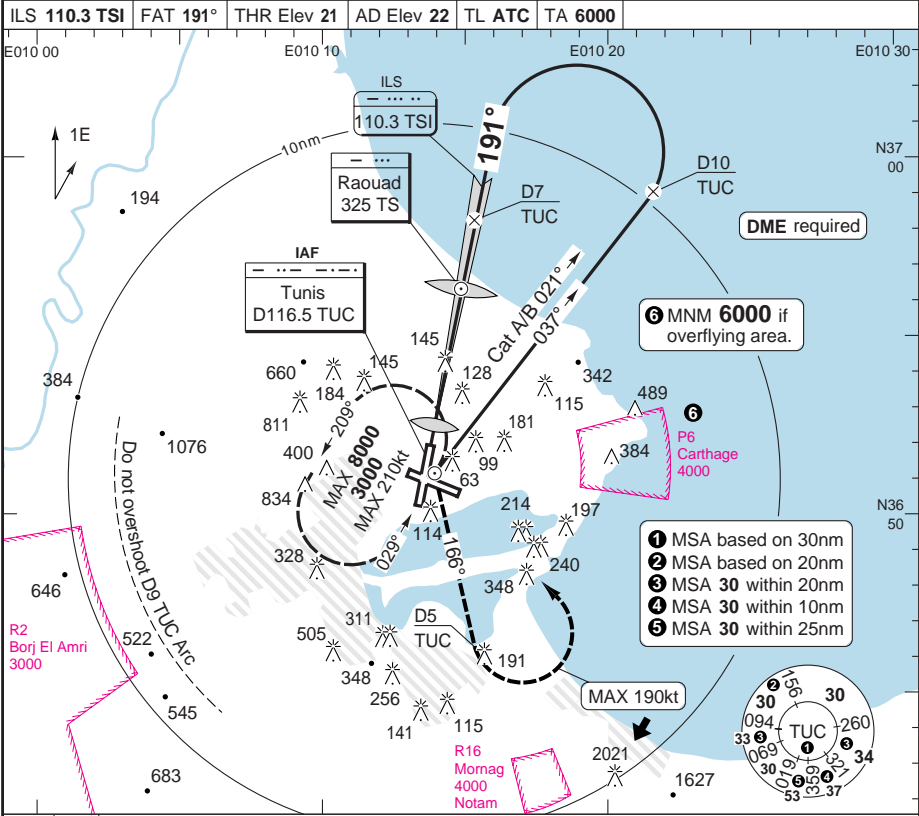
© Navtech - dttat01iaip00

Change: Minima.

THIS CHART IS A PART OF NAVIGRAPH NDAC AND IS INTENDED FOR FLIGHT SIMULATION USE ONLY

ILS RWY 19 VOR/DME

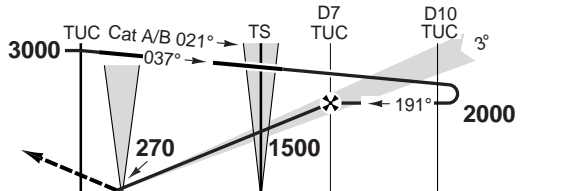
Tunis APP 121.2 119.5	Airport 118.1	GND 121.9	ATIS 118.675
ILS 110.3 TSI	FAT 191°	THR Elev 21	AD Elev 22
TL ATC	TA 6000		



⑥ MNM 6000 if overflying area.

- ① MSA based on 30nm
- ② MSA based on 20nm
- ③ MSA 30 within 20nm
- ④ MSA 30 within 10nm
- ⑤ MSA 30 within 25nm

Turn left as soon as possible and climb on R166 to **D116.5 TUC** to D5 **TUC**, turn left (MAX 190kt) to **TUC** climbing to **3000** and hold.



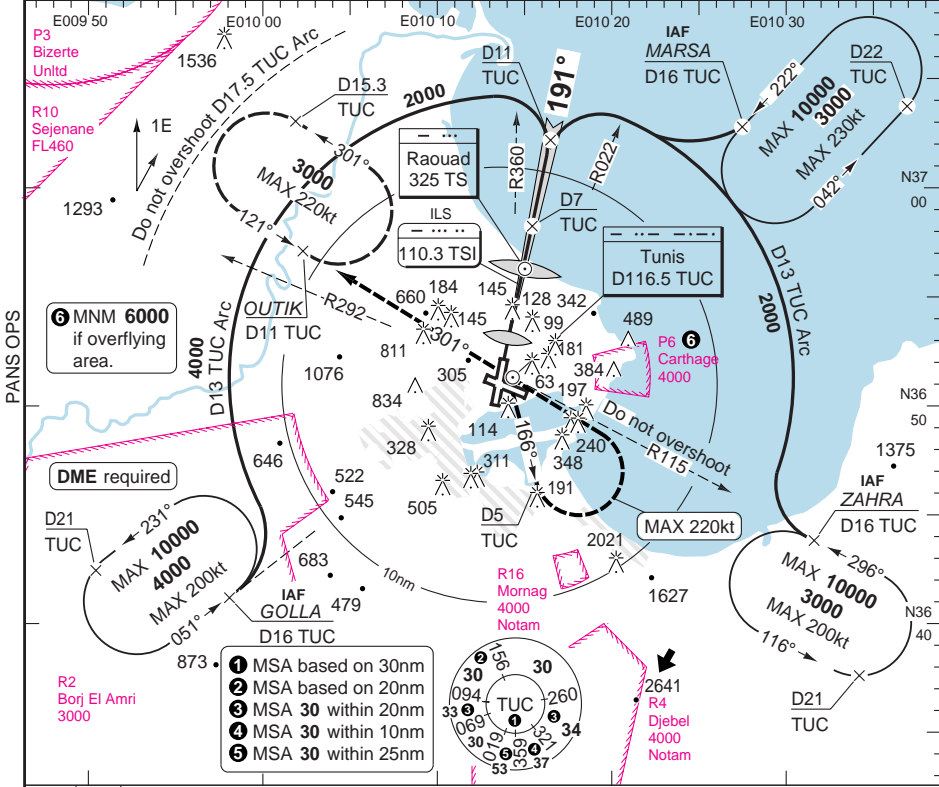
TCH 58										
ACFT	ILS+DME	LLZ+DME			Circling		a CAT A: 280 (260) 650m		DME 3.0°	LDA 3200x45
A/B	290 (270) 650m a	400 (380) 1000m			700 (680) 1.6km b		b CAT A: 550 (530) 1.5km		TUC ALT	10498x147ft
C	300 (280) 650m				1230 (1210) 2.4km				6 1680	P 3°
D	310 (290) 650m	400 (380) 1400m			1230 (1210) 3.6km				5 1360	
GS	80	100	120	140	160			4 1040		
ROD 3.0°	430	540	650	760	860			3 720		
FAF-MAPt	Not Published									

© Navtech - dttat03iaip00

ILS RWY 19 GOLLA, MARSZA, ZAHRA

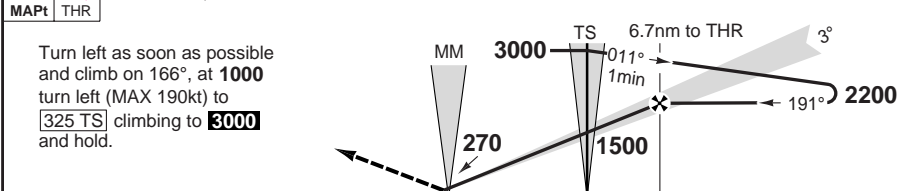
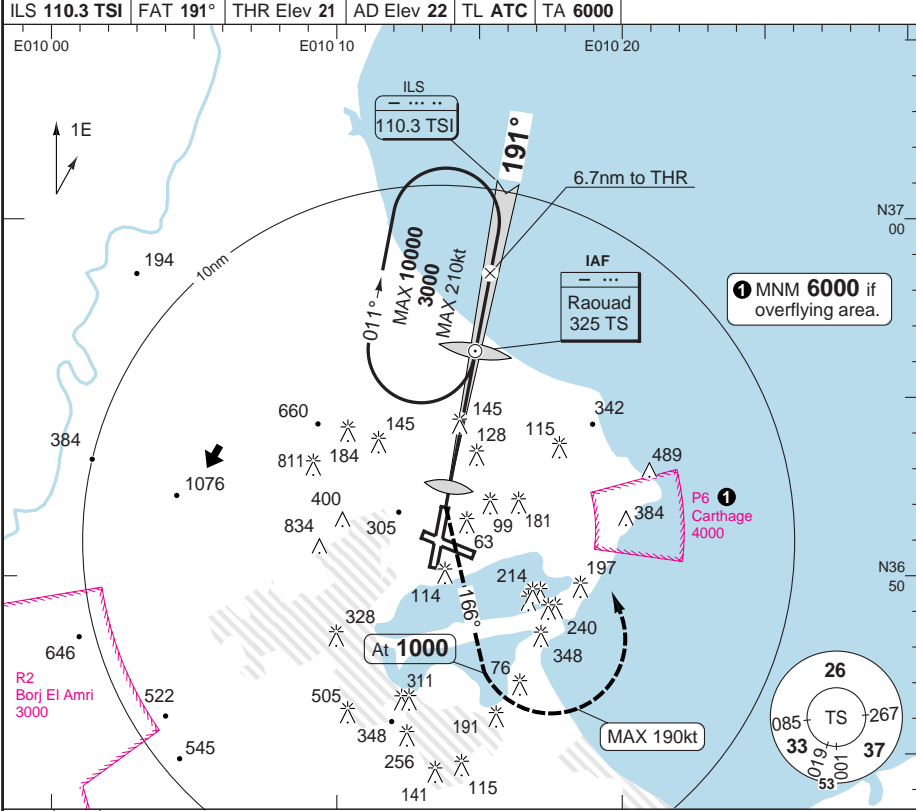
Tunis APP 121.2 119.5	Airport 118.1	GND 121.9	ATIS 118.675
---	-------------------------	---------------------	------------------------

ILS 110.3 TSI	FAT 191°	THR Elev 21	AD Elev 22	TL ATC	TA 6000
----------------------	-----------------	--------------------	-------------------	---------------	----------------



ILS RWY 19 NDB

Tunis APP 121.2 119.5	Airport 118.1	GND 121.9	ATIS 118.675
ILS 110.3 TSI	FAT 191°	THR Elev 21	AD Elev 22
TL ATC	TA 6000		



TCH 58

ACFT	ILS	LLZ	Circling
A/B	290 (270) 650m a	400 (380) 1000m	700 (680) 1.6km b
C	300 (280) 650m		1230 (1210) 2.4km
D	310 (290) 650m	400 (380) 1400m	1230 (1210) 3.6km

GS	80	100	120	140	160	LDA 3200x45 10498x147ft P 3°
ROD 3.0°	430	540	650	750	860	
OM +20s	2060	1340	1300	1270	1230	
+40s	1920	1160	1090	1020	950	
+60s	1780	980	880	770	660	
OM - 400	2:36	2:05	1:44	1:29	1:18	

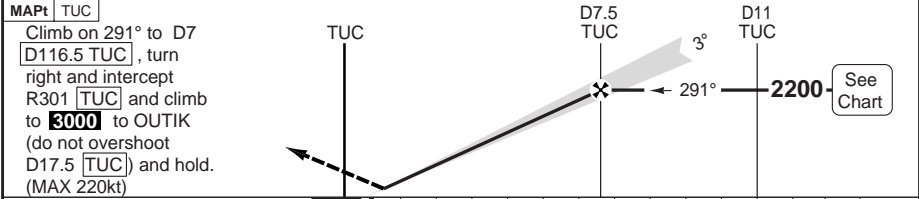
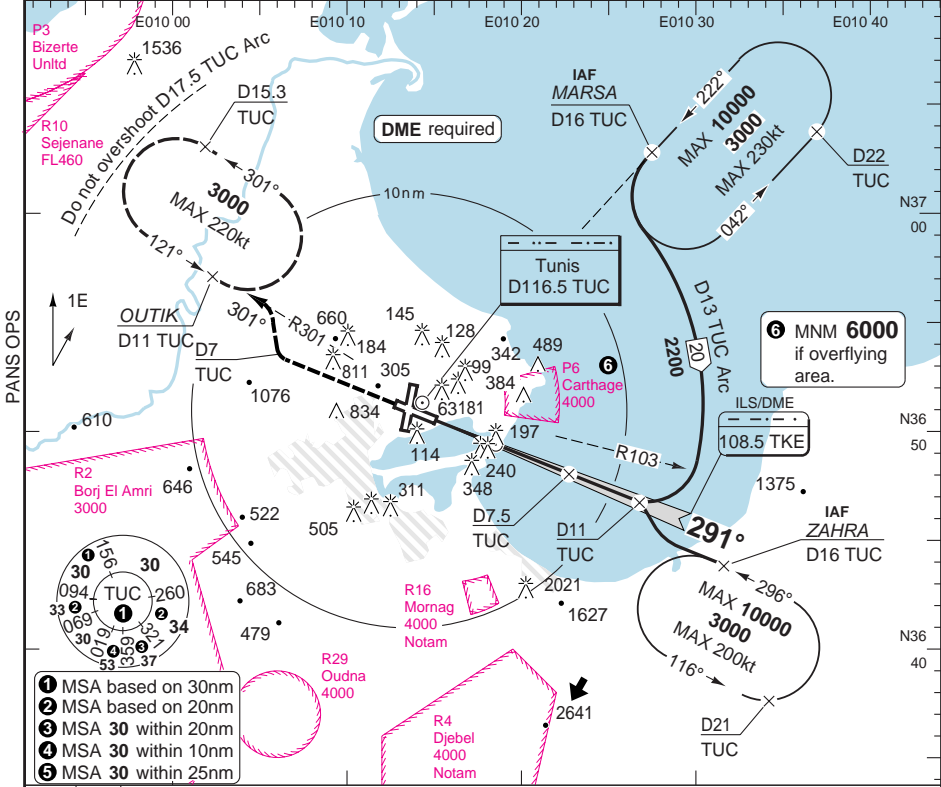
- a** CAT A: **280** (260) 650m
- b** CAT A: **550** (530) 1.5km

© Navtech - dttta05iaip00

ILS RWY 29 MARSА, ZAHRA

Tunis APP 121.2 119.5	Airport 118.1	GND 121.9	ATIS 118.675
---	-------------------------	---------------------	------------------------

ILS/DME 108.5 TKE	FAT 291°	DTHR Elev 11	AD Elev 22	TL ATC	TA 6000
--------------------------	-----------------	---------------------	-------------------	--------	----------------



TCH 58

0	1	2	3	4	5	6	7	8	9	10	11	12	13	14	nm
---	---	---	---	---	---	---	---	---	---	----	----	----	----	----	----

ACFT	ILS+DME	LLZ+DME	Circling
A/B	250 (240) 1200m a	530 (520) 1500m	700 (680) 1.6km b
C	260 (250) 1300m	530 (520) 2400m	1230 (1210) 2.4km
D	270 (260) 1300m		1230 (1210) 3.6km

- a** CAT A: 240 (230) 1200m
- b** CAT A: 570 (550) 1.5km

DME TUC	3.0° ALT	LDA 2640x45 8661x147ft P 3°
6	1710	
5	1390	
4	1080	
3	760	
2	440	

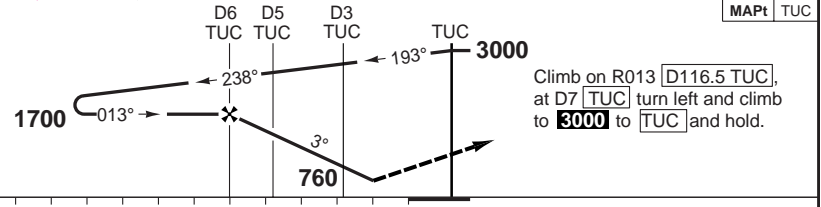
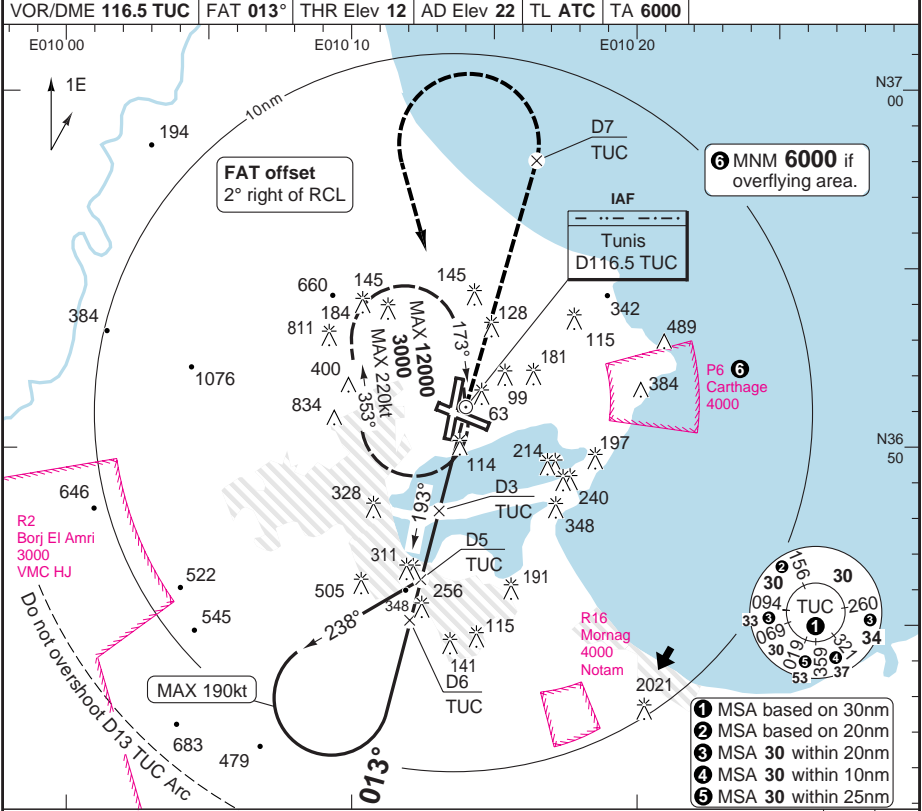
GS	80	100	120	140	160
ROD 3.0°	430	540	640	750	860
FAF-MAPt	Not Published				

© Navtech - dttat07iaip00

MALS

VOR RWY 01 VOR/DME

Tunis APP 121.2 119.5	Airport 118.1	GND 121.9	ATIS 118.675
VOR/DME 116.5 TUC	FAT 013°	THR Elev 12	AD Elev 22
TL ATC	TA 6000		



nm	12	11	10	9	8	7	6	5	4	3	2	1	0
ACFT	VOR+DME		Circling		① CAT A: 550 (530) 1.5km								
A/B	380 (370) 1500m		700 (680) 1.6km ②										
C	380 (370) 1800m		1230 (1210) 2.4km										
D	380 (370) 2000m		1230 (1210) 3.6km										
GS	80	100	120	140	160								
ROD 3.0°	430	540	640	750	860								
FAF-MAPt	4:30	3:35	3:00	2:34	2:15								
DME TUC	3.0° ALT	LDA 3200x45 10498x147ft P 3°											
5	1380												
4	1060												
3	750												
2	440												

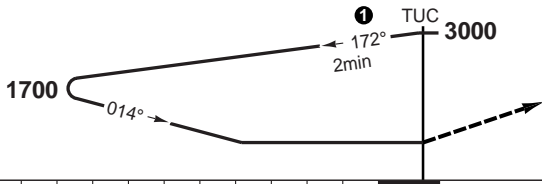
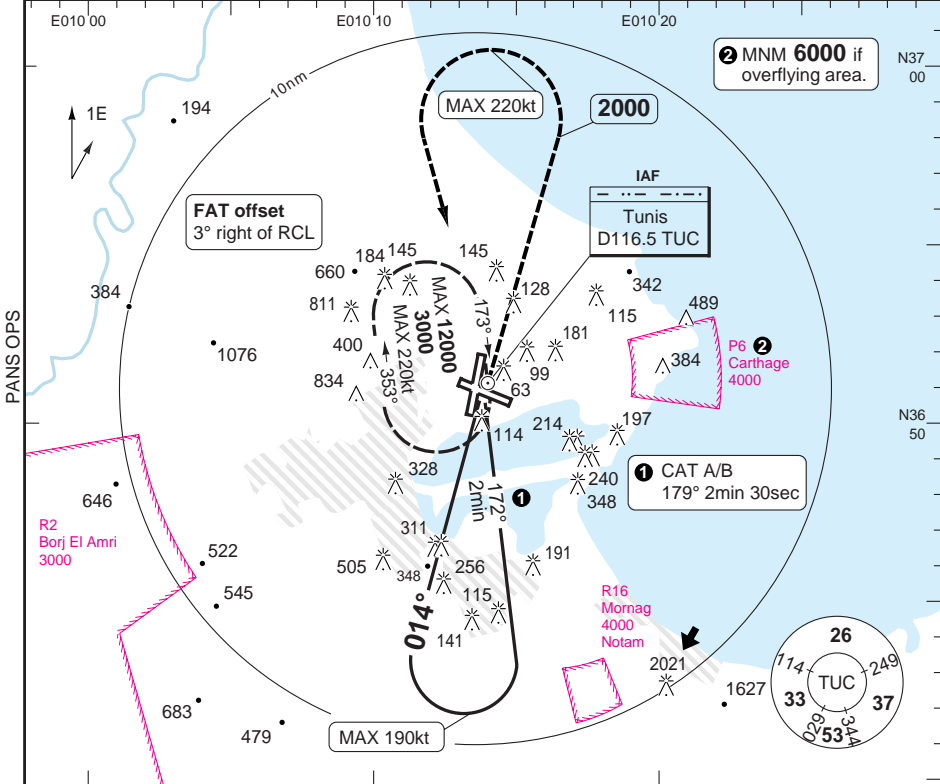
© Navtech - dttta08iap00

NALS

VOR RWY 01

Tunis APP 121.2 119.5	Airport 118.1	GND 121.9	ATIS 118.675
---	-------------------------	---------------------	------------------------

VOR/DME 116.5 TUC	FAT 014°	THR Elev 12	AD Elev 22	TL ATC	TA 6000
--------------------------	-----------------	--------------------	-------------------	---------------	----------------



Climb on R014
D116.5 TUC to **2000**.
Turn left to TUC
(MAX 220kt) climbing
to **3000**.
No turn before MAPt.

nm	12	11	10	9	8	7	6	5	4	3	2	1	0
----	----	----	----	---	---	---	---	---	---	---	---	---	---

ACFT	VOR	VOR a	Circling	Circling a	a Non CDFA
A/B	810 (790) 3600m	810 (790) 3800m	820 (790) 3.6km	820 (790) 3.8km	
C		810 (790) 4000m	1230 (1210) 3.6km	1230 (1210) 4.0km	
D			1230 (1210) 4.0km		

LDA 3200x45
10498x147ft
P 3°

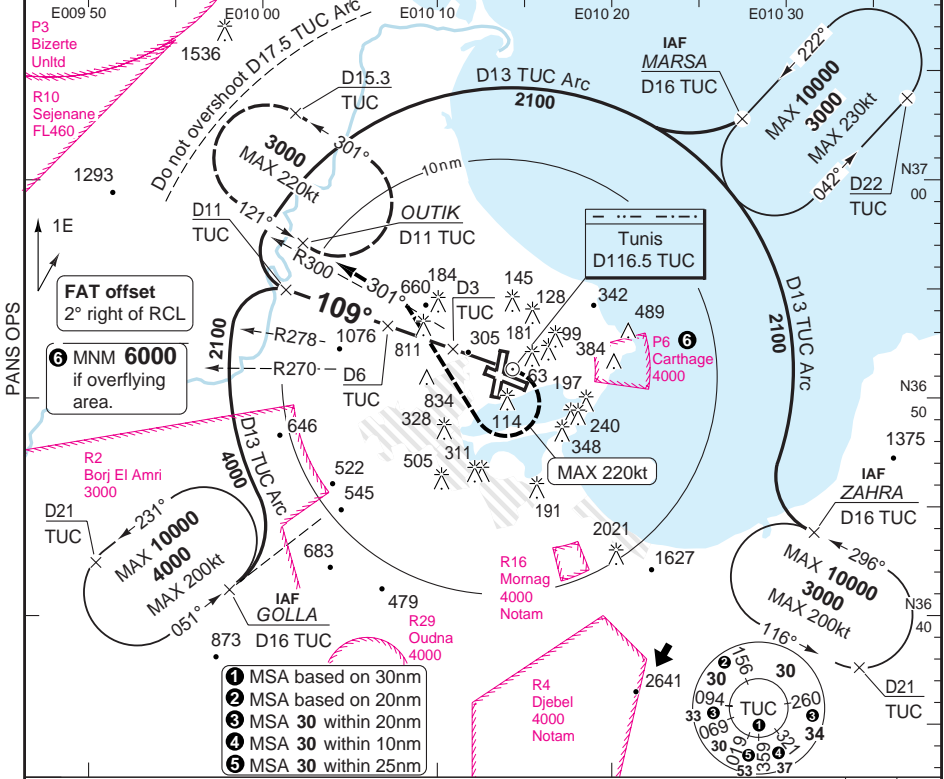


NALS

VOR RWY 11 VOR/DME - GOLLA, MARSA, ZAHRA

Tunis APP 121.2 119.5	Airport 118.1	GND 121.9	ATIS 118.675
---	-------------------------	---------------------	------------------------

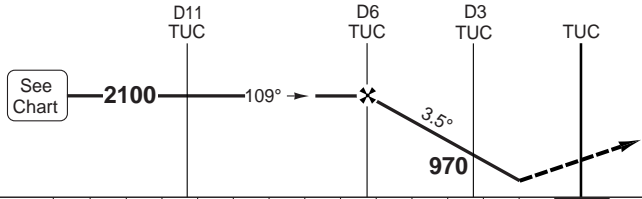
VOR/DME 116.5 TUC	FAT 109°	THR Elev 19	AD Elev 22	TL ATC	TA 6000
--------------------------	-----------------	--------------------	-------------------	--------	----------------



FAT offset
2° right of RCL

6 MNM 6000
if overflying
area.

- 1 MSA based on 30nm
- 2 MSA based on 20nm
- 3 MSA 30 within 20nm
- 4 MSA 30 within 10nm
- 5 MSA 30 within 25nm



At **D116.5 TUC** turn right to intercept **R301 TUC**. Climb to **3000** to **OUTIK** and hold. (MAX 220kt)

nm	14	13	12	11	10	9	8	7	6	5	4	3	2	1	0
ACFT	VOR+DME		Circling		CAT A: 860 (830) 1.5km										
A/B	850 (830) 1500m		860 (830) 1.6km												
C	850 (830) 2400m		1240 (1210) 2.4km												
D			1240 (1210) 3.6km												
GS	80	100	120	140	160										
ROD 3.5°	500	620	740	870	990										
FAF-MAPt	4:30	3:36	3:00	2:34	2:15										

DME TUC	3.5° ALT	LDA 2840x45 9317x147ft P 3.5°
5	1710	
4	1340	
3	970	
2	600	

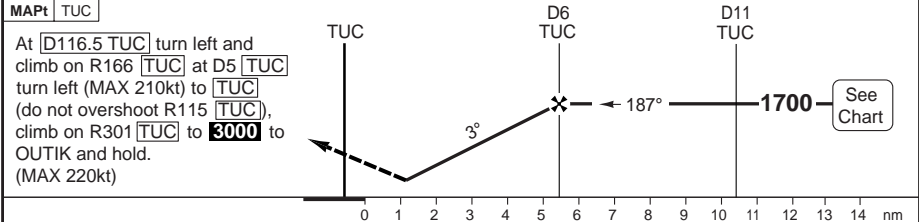
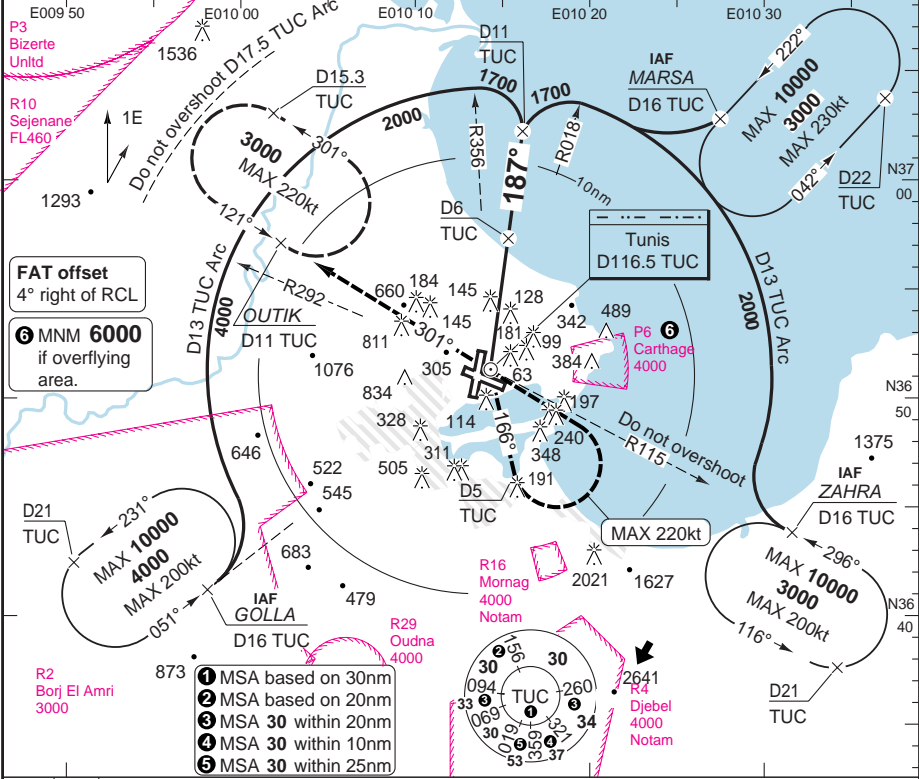
© Navtech - dttat10iaip00
EU OPS

NALS

VOR RWY 19 VOR/DME - GOLLA, MARSA, ZAHRA

Tunis APP 121.2 119.5	Airport 118.1	GND 121.9	ATIS 118.675
---	-------------------------	---------------------	------------------------

VOR/DME 116.5 TUC	FAT 187°	THR Elev 21	AD Elev 22	TL ATC	TA 6000
--------------------------	-----------------	--------------------	-------------------	--------	----------------



ACFT	VOR+DME	Circling	ⓐ CAT A: 550 (530) 1.5km	DME 3.0°	LDA 3200x45
A/B	400 (380)	700 (680)		TUC ALT	10498x147ft
C	1000m	1.6km ⓐ		6 1700	
D	400 (380)	1230 (1210)		5 1380	
	1400m	2.4km		4 1060	
		3.6km		3 740	
				2 400	
GS	80	100	120	140	160
ROD 3.0°	430	540	650	760	860
FAF-MAPt	4:30	3:35	3:00	2:34	2:15

© Navtech - dttat11aip00

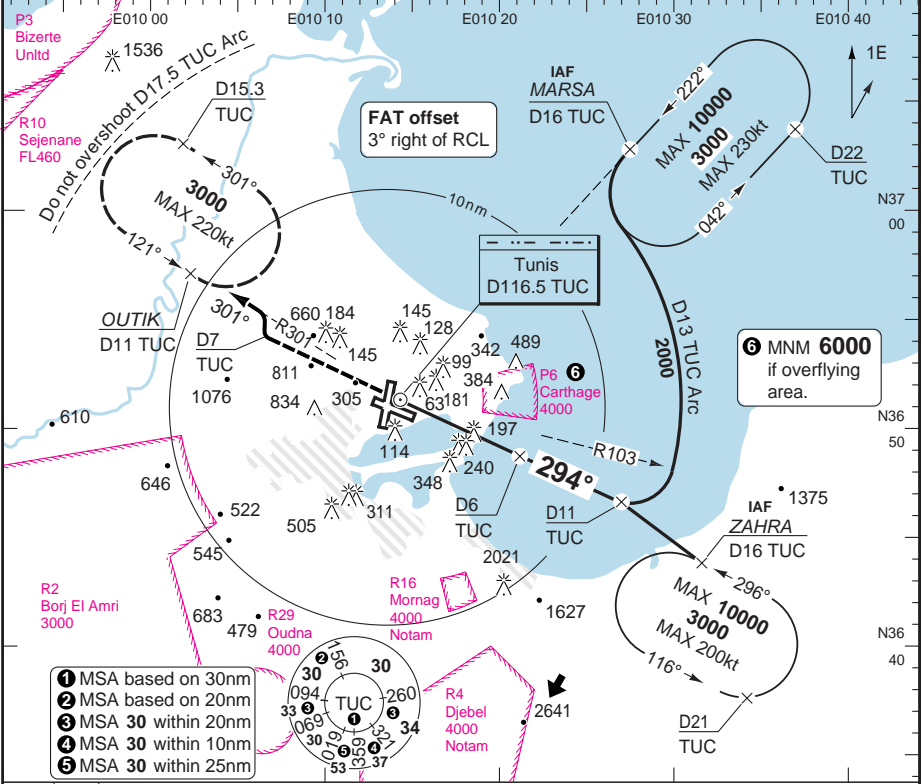
FALS

VOR RWY 29 VOR/DME - MARSА, ZAHRA

Carthage TUNIS

Tunis APP 121.2 119.5	Airport 118.1	GND 121.9	ATIS 118.675
---	-------------------------	---------------------	------------------------

VOR/DME 116.5 TUC	FAT 294°	DTHR Elev 11	AD Elev 22	TL ATC	TA 6000
--------------------------	-----------------	---------------------	-------------------	--------	----------------



MAPt TUC
 Climb on R294 [D116.5 TUC], to D7 [TUC], turn right and intercept R301 [TUC] and climb to **3000** to OUTIK (do not overshoot D17.5 [TUC]) and hold. (MAX 220kt)

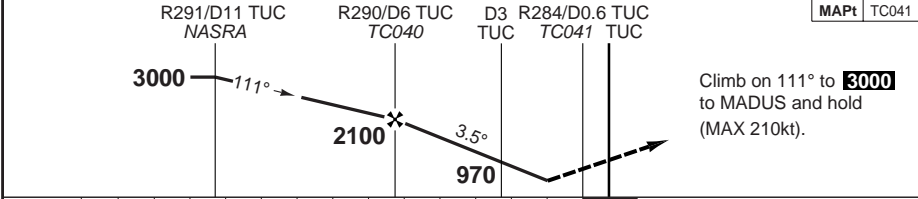
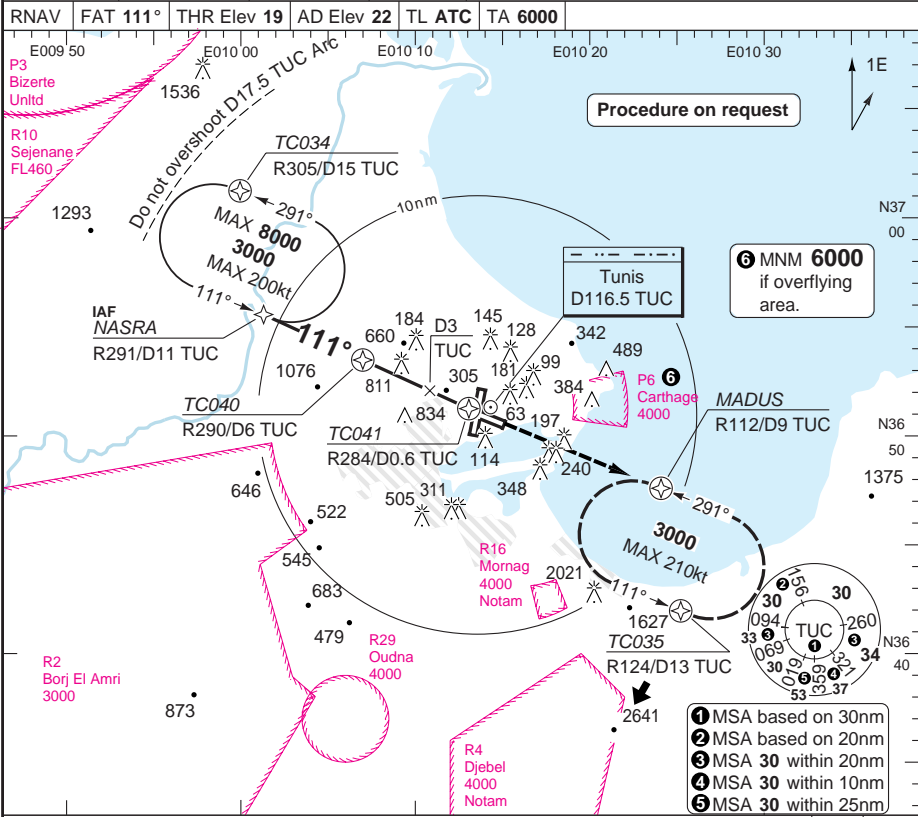
ACFT	VOR+DME	Circling	a CAT A: 570 (550) 1.5km	DME 3.0° ALT	LDA 2640x45 8661x147ft P 3°
A/B	530 (520) 1500m	700 (680) 1.6km a		6 1700	
C	530 (520) 2400m	1230 (1210) 2.4km		5 1390	
D		1230 (1210) 3.6km		4 1070	
				3 760	
				2 440	
GS	80	100	120	140	160
ROD 3.0°	430	530	640	740	850
FAF-MAPt	4:30	3:35	3:00	2:34	2:15

© Navtech - dttat2iaip00

NALS

RNAV RWY 11 VOR/DME

Tunis APP 121.2 119.5	Airport 118.1	GND 121.9	ATIS 118.675
RNAV	FAT 111°	THR Elev 19	AD Elev 22
	TL ATC	TA 6000	



nm	14	13	12	11	10	9	8	7	6	5	4	3	2	1	0
ACFT	RNAV (VOR+DME)		Circling		CAT A: 860 (830) 1.5km										
A/B	850 (830) 1500m		860 (830) 1.6km												
C	850 (830) 2400m		1240 (1210) 2.4km												
D			1240 (1210) 3.6km												
GS	80	100	120	140	160										
ROD 3.5°	500	630	750	880	1010										
FAF-MAPt	4:02	3:14	2:42	2:19	2:01										
DME TUC	6	5	4	3											
3.5° ALT	2100	1690	1320	950											
LDA 2840x45 9317x147ft P 3.5°															

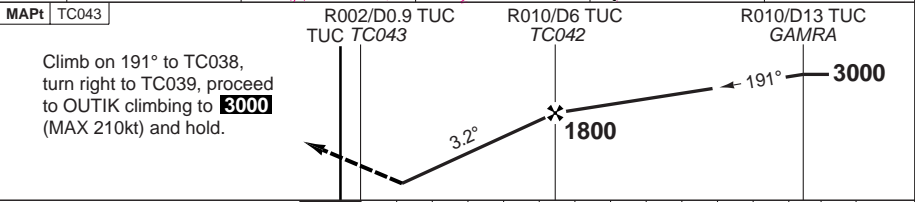
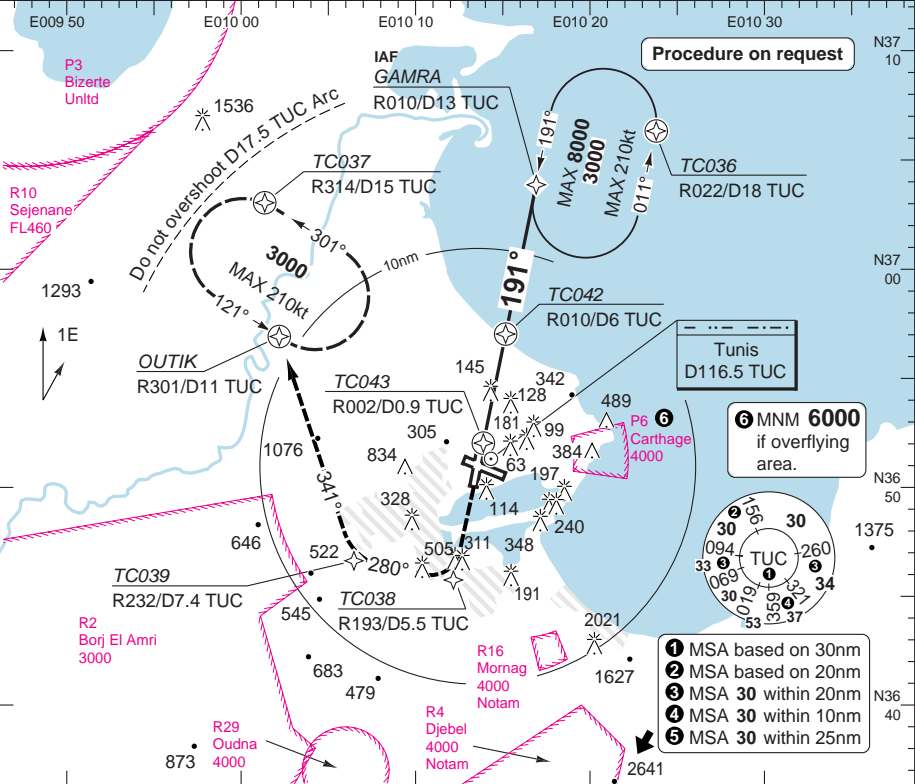
© Navtech - dttat3iaip00

NALS

RNAV RWY 19 VOR/DME

Tunis APP 121.2 119.5	Airport 118.1	GND 121.9	ATIS 118.675
---	-------------------------	---------------------	------------------------

RNAV	FAT 191°	THR Elev 21	AD Elev 22	TL ATC	TA 6000
------	-----------------	--------------------	-------------------	---------------	----------------



ACFT	RNAV (VOR+DME)	Circling	a CAT A: 550 (530) 1.5km	DME TUC	3.2° ALT	LDA 3200x45 10498x147ft
A/B	400 (380) 1000m	700 (680) 1.6km ③		6	1800	P 3°
C		1230 (1210) 2.4km		5	1460	
D	400 (380) 1400m	1230 (1210) 3.6km		4	1120	
				3	780	
GS	80 100 120 140 160					
ROD 3.2°	450 570 690 800 920					
FAF-MAPt	3:46 3:02 2:32 2:10 1:53					

© Navtech - dttat14iap00

FALS

Change: Renumbered.

THIS CHART IS A PART OF NAVIGRAPH NDAC AND IS INTENDED FOR FLIGHT SIMULATION USE ONLY

JAR-OPS Landing Minima

Carthage **TUNIS**

The following Minima is for Public Transport aircraft and conforms to JAR-OPS1 regulations.

STRAIGHT-IN APPROACH		C				D			
R/W	Procedure	DA/ MDA QNH	DH/ MDH QFE	RVR	RVR	DA/ MDA QNH	DH/ MDH QFE	RVR	RVR
		ft	ft	m	m	ft	ft	m	m
01	ILS/DME	250	230	1000	N/A	260	240	1000	N/A
01	LLZ/DME	390	370	1800	N/A	390	370	2000	N/A
01	VOR/DME	390	370	1800	N/A	390	370	2000	N/A
01	VOR	810	790	2000	N/A	810	790	2000	N/A
11	VOR/DME (1)	690	660	2000	N/A	690	660	2000	N/A
11	RNAV-VOR/DME (1)	690	660	2000	N/A	690	660	2000	N/A
19	ILS	310	280	650	1200	320	290	650	1200
19	LLZ	410	380	1000	1800	410	380	1400	2000
19	VOR/DME (1)	410	380	1000	1800	410	380	1400	2000
19	RNAV-VOR/DME (1)	410	380	1000	1800	410	380	1400	2000
29	ILS/DME	270	250	1000	N/A	280	260	1200	N/A
29	LLZ/DME	540	520	2000	N/A	540	520	2000	N/A
29	VOR/DME	540	520	2000	N/A	540	520	2000	N/A
29	RNAV-VOR/DME	500	480	2000	N/A	500	480	2000	N/A

Notes:

(1) Procedure based on aerodrome elevation.

CIRCLING		C			D		
R/W	Procedure	MDA QNH	MDH QFE	Vis	MDA QNH	MDH QFE	Vis
		ft	ft	m	ft	ft	m
01	VOR	1240	1210	2400	1240	1210	3600
11	All procs	1240	1210	2400	1240	1210	3600
29	RNAV- VOR/DME	1240	1210	2400	1240	1210	3600
29	Other procs	1240	1210	2400	1240	1210	3600
	All other procs	1240	1210	2400	1240	1210	3600

Notes:

TAKE-OFF		C		D	
Runway	Facilities	RVR	Vis	RVR	Vis
01, 11, 19, 29	REDL and/or RCL	400	-	400	-
01, 11, 19, 29	Nil (Day only)	500	-	500	-

Notes:

JAR-OPS Landing Minima

Carthage **TUNIS**

The following Minima is for Public Transport aircraft and conforms to JAR-OPS1 regulations.

STRAIGHT-IN APPROACH		A				B			
R/W	Procedure	DA/ MDA QNH	DH/ MDH QFE	RVR	RVR	DA/ MDA QNH	DH/ MDH QFE	RVR	RVR
		ft	ft	m	m	ft	ft	m	m
01	ILS/DME	230	210	1000	N/A	240	220	1000	N/A
01	LLZ/DME	390	370	1500	N/A	390	370	1500	N/A
01	VOR/DME	390	370	1500	N/A	390	370	1500	N/A
01	VOR	810	790	1500	N/A	810	790	1500	N/A
11	VOR/DME (1)	690	660	1500	N/A	690	660	1500	N/A
11	RNAV-VOR/DME (1)	690	660	1500	N/A	690	660	1500	N/A
19	ILS	290	260	650	1200	300	270	650	1200
19	LLZ	410	380	900	1500	410	380	1000	1500
19	VOR/DME (1)	410	380	900	1500	410	380	1000	1500
19	RNAV-VOR/DME (1)	410	380	900	1500	410	380	1000	1500
29	ILS/DME	250	230	1000	N/A	260	240	1000	N/A
29	LLZ/DME	540	520	1500	N/A	540	520	1500	N/A
29	VOR/DME	540	520	1500	N/A	540	520	1500	N/A
29	RNAV-VOR/DME	500	480	1500	N/A	500	480	1500	N/A

Notes:

(1) Procedure based on aerodrome elevation.

CIRCLING		A			B		
R/W	Procedure	MDA QNH	MDH QFE	Vis	MDA QNH	MDH QFE	Vis
		ft	ft	m	ft	ft	m
01	VOR	820	790	1500	820	790	1600
11	All procs	690	660	1500	710	680	1600
29	RNAV- VOR/DME	560	530	1500	710	680	1600
29	Other procs	580	550	1500	710	680	1600
	All other procs	560	530	1500	710	680	1600

Notes:

TAKE-OFF		A		B	
Runway	Facilities	RVR	Vis	RVR	Vis
01, 11, 19, 29	REDL and/or RCL	400	-	400	-
01, 11, 19, 29	Nil (Day only)	500	-	500	-

Notes: