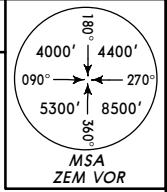


DAAG/ALG
 HOUARI BOUMEDIENE

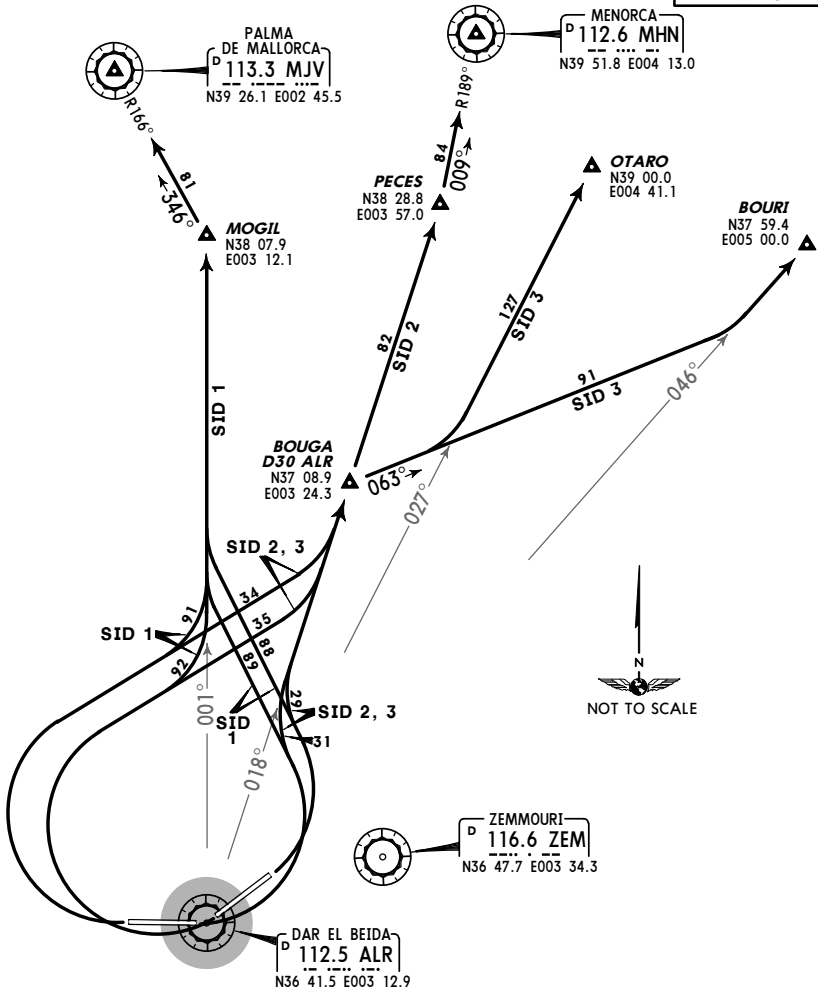
JEPPESEN
 13 APR 07 (10-3)

ALGIERS, ALGERIA
 SID

Apt Elev 82' Trans level: By ATC Trans alt: 3940'



SID 1, SID 2, SID 3
 RWYS 05, 09, 23, 27 DEPARTURES



SID	RWY	INITIAL CLIMB/ROUTING
SID 1	05, 09	Turn LEFT, intercept ALR R-001 to MOGIL.
	23, 27	Turn RIGHT, intercept ALR R-001 to MOGIL, then to MJV.
SID 2	05, 09	Turn LEFT, intercept ALR R-018 to PECES, then to MHN.
	23, 27	Turn RIGHT, intercept ALR R-018 to PECES, then to MHN.
SID 3	05, 09	Turn LEFT, intercept ALR R-018 to D30 ALR, turn RIGHT, 063° track, intercept ALR R-027 to OTARO or ALR R-046 to BOURI.
	23, 27	Turn RIGHT, intercept ALR R-018 to D30 ALR, turn RIGHT, intercept ALR R-027 to OTARO or ALR R-046 to BOURI.

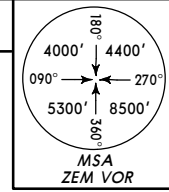
CHANGES: BOURI INS coordinates. © JEPPESEN SANDERSON, INC., 2003, 2007. ALL RIGHTS RESERVED.

DAAG/ALG
 HOUARI BOUMEDIENE

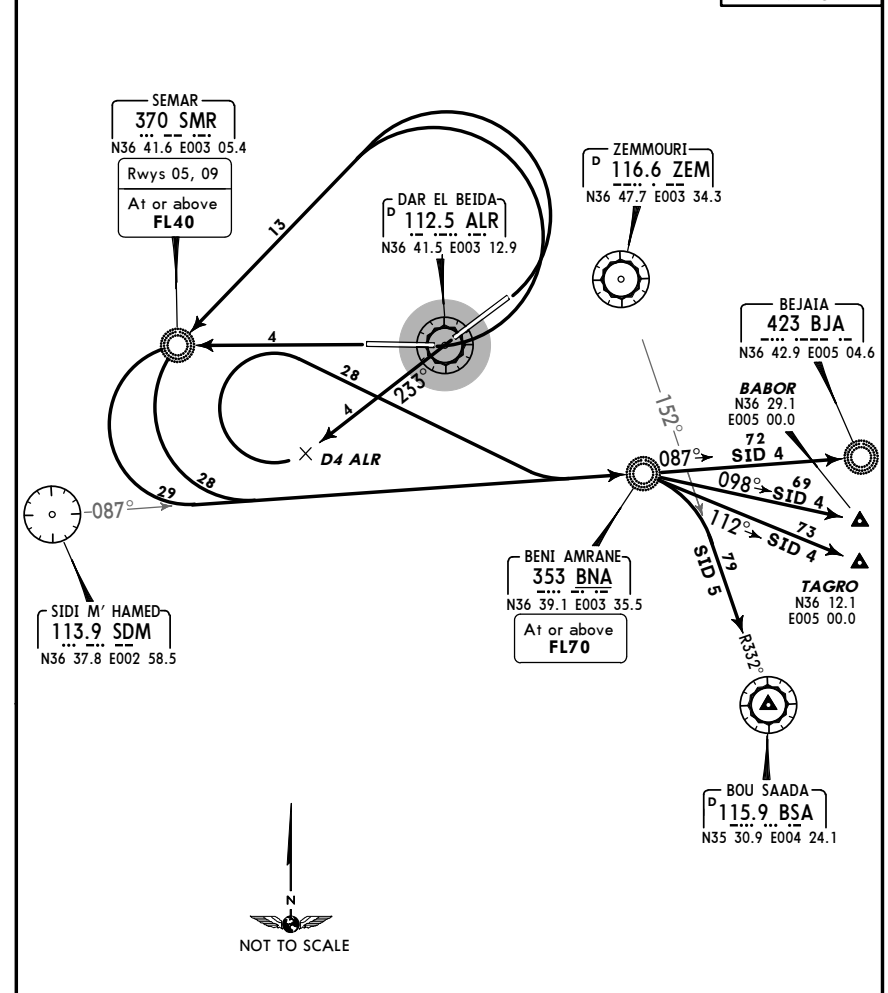
JEPPESEN
 13 APR 07 (10-3A)

ALGIERS, ALGERIA
 SID

Apt Elev 82' Trans level: By ATC Trans alt: 3940'



SID 4, SID 5
 RWYS 05, 09, 23, 27 DEPARTURES



RWY	INITIAL CLIMB
05, 09	Turn LEFT to SMR, intercept SDM R-087 to BNA.
23	To ALR, ALR R-233 to D4 ALR, turn RIGHT, intercept SDM R-087 to BNA.
27	To SMR, turn LEFT, intercept SDM R-087 to BNA.

SID	ROUTING
SID 4	At BNA to BJA or BABOR or TAGRO.
SID 5	At BNA to BSA.

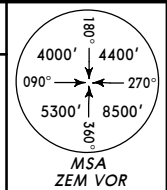
CHANGES: BABOR, BJA & TAGRO INS coordinates. © JEPPESEN SANDERSON, INC., 2003, 2007. ALL RIGHTS RESERVED.

DAAG/ALG
 HOUARI BOUMEDIENE

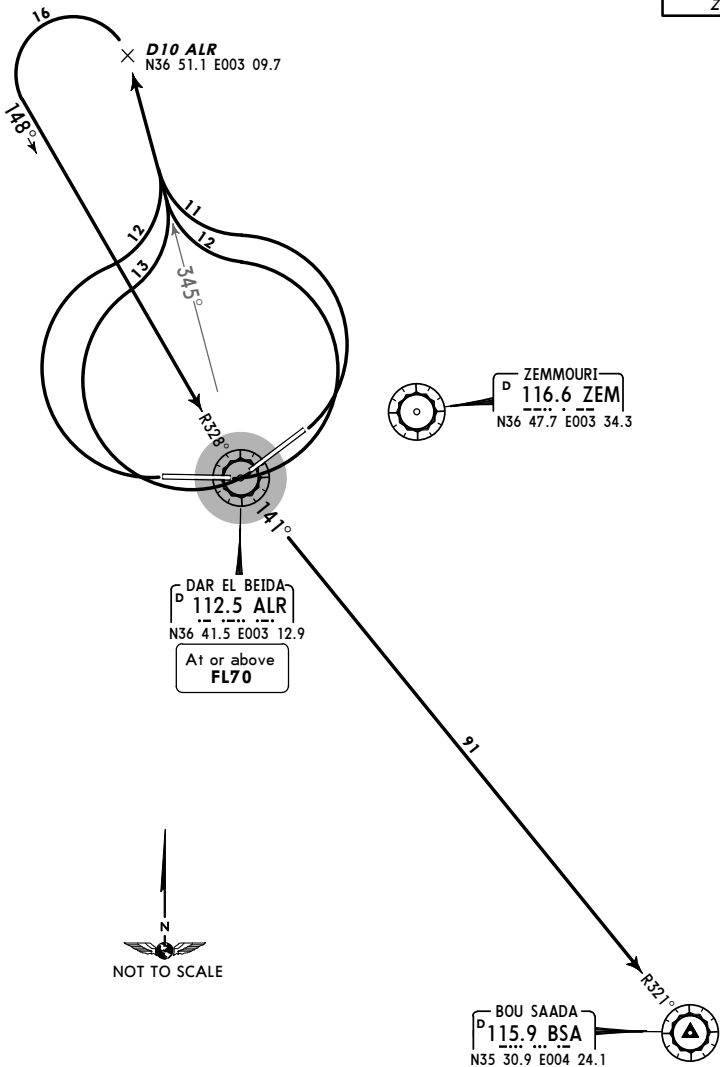
JEPPesen
 13 APR 07 (10-3B)

ALGIERS, ALGERIA
 SID

Apt Elev 82' Trans level: By ATC Trans alt: 3940'



SID 6
 RWYS 05, 09, 23, 27 DEPARTURE



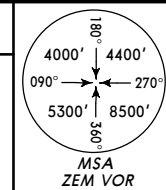
RWY	INITIAL CLIMB/ROUTING
05, 09	Turn LEFT, intercept ALR R-345 to D10 ALR, turn LEFT, intercept ALR R-328 inbound to ALR, ALR R-141 to BSA.
23, 27	Turn RIGHT, intercept ALR R-345 to D10 ALR, turn LEFT, intercept ALR R-328 inbound to ALR, ALR R-141 to BSA.

DAAG/ALG
 HOUARI BOUMEDIENE

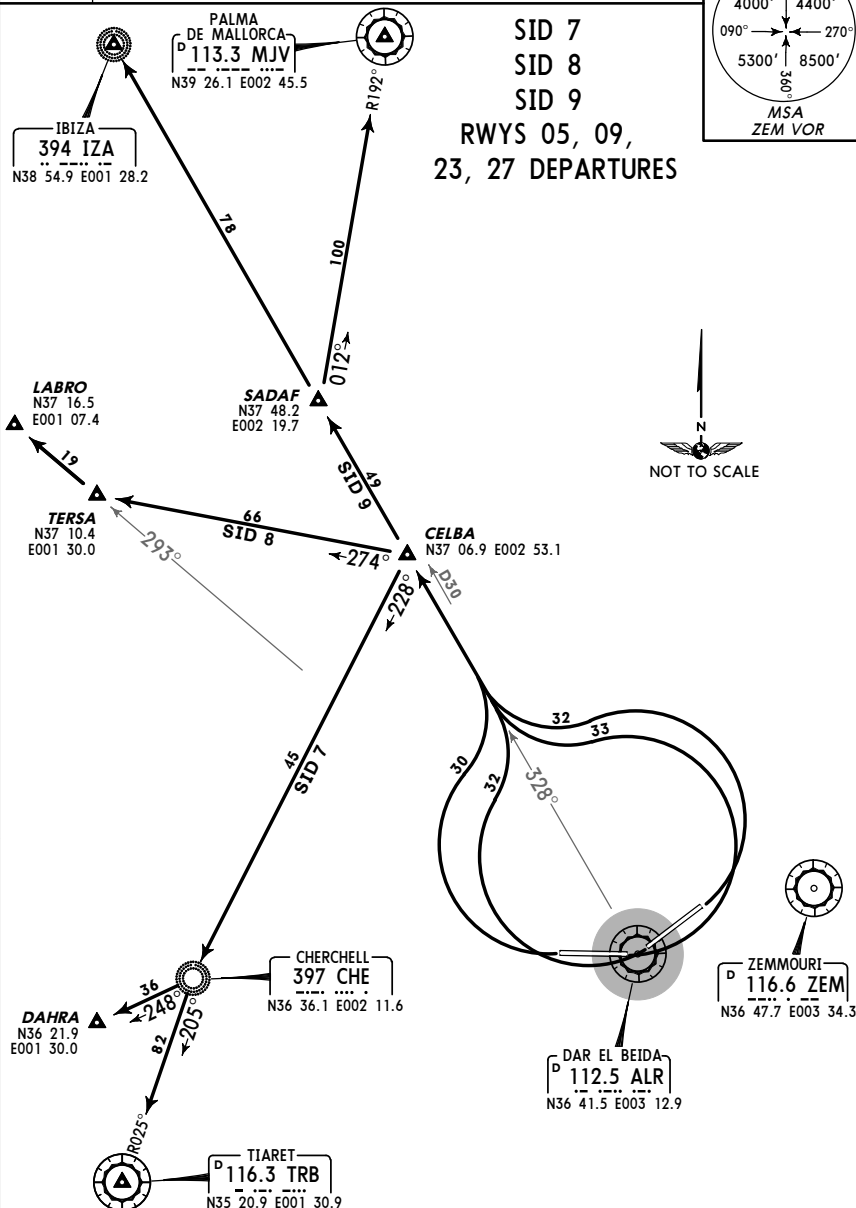
JEPPesen
 13 APR 07 (10-3C)

ALGIERS, ALGERIA
 SID

Apt Elev 82' Trans level: By ATC Trans alt: 3940'



SID 7
 SID 8
 SID 9
 RWYS 05, 09,
 23, 27 DEPARTURES



RWY	INITIAL CLIMB
05, 09	Turn LEFT, intercept ALR R-328 to CELBA.
23, 27	Turn RIGHT, intercept ALR R-328 to CELBA.

SID	ROUTING
SID 7	At CELBA turn LEFT to CHE, then to DAHRA or TRB.
SID 8	At CELBA turn LEFT to TERSA, intercept ALR R-293 to LABRO.
SID 9	At CELBA continue on ALR R-328 to SADAF, then to IZA or to MJV.

DAAG/ALG

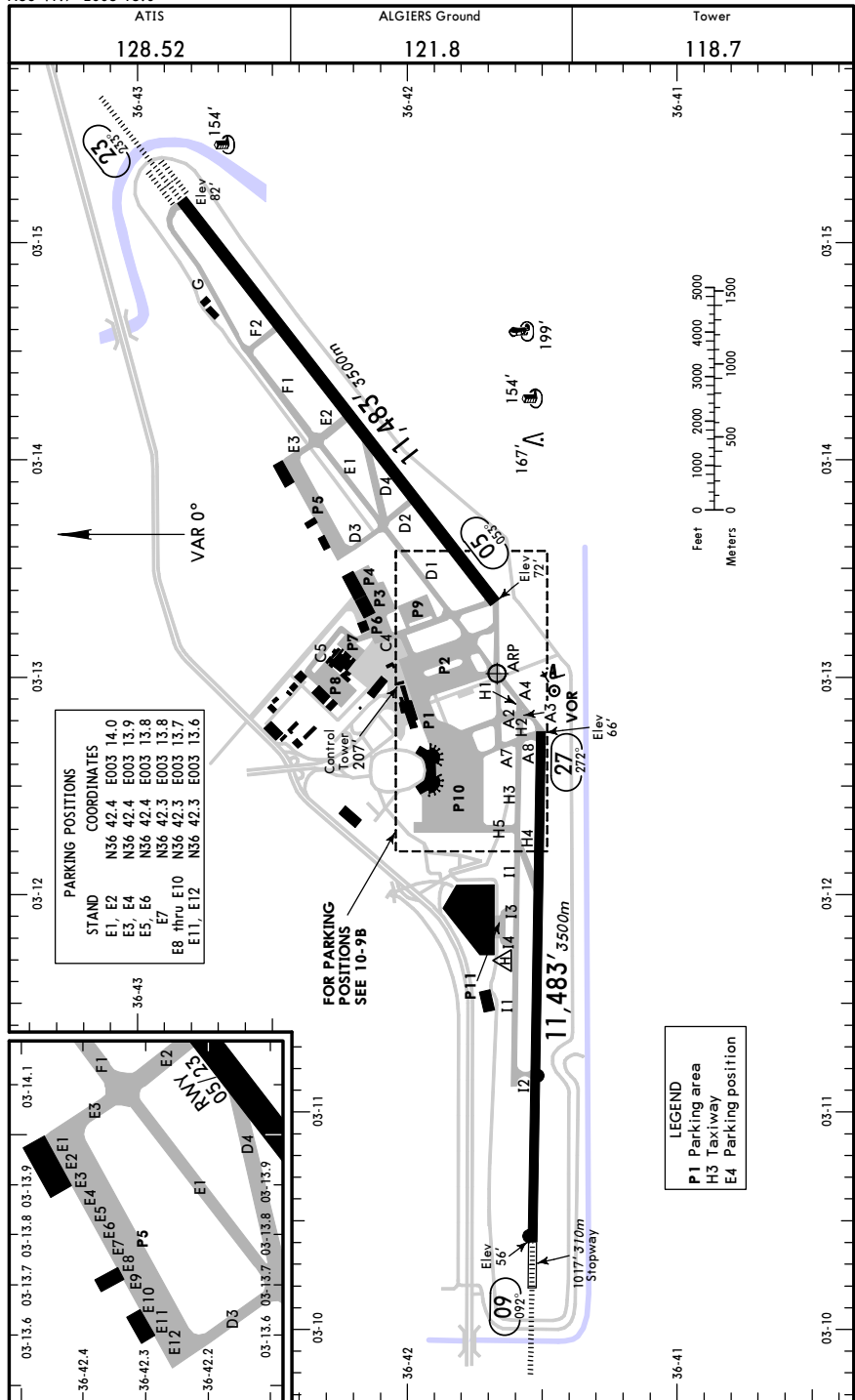
Apt Elev 82'
 N56 41.7 E003 13.0



30 JAN 09 (10-9) Eff 12 Feb

ALGIERS, ALGERIA

HOUARI BOUMEDIENE



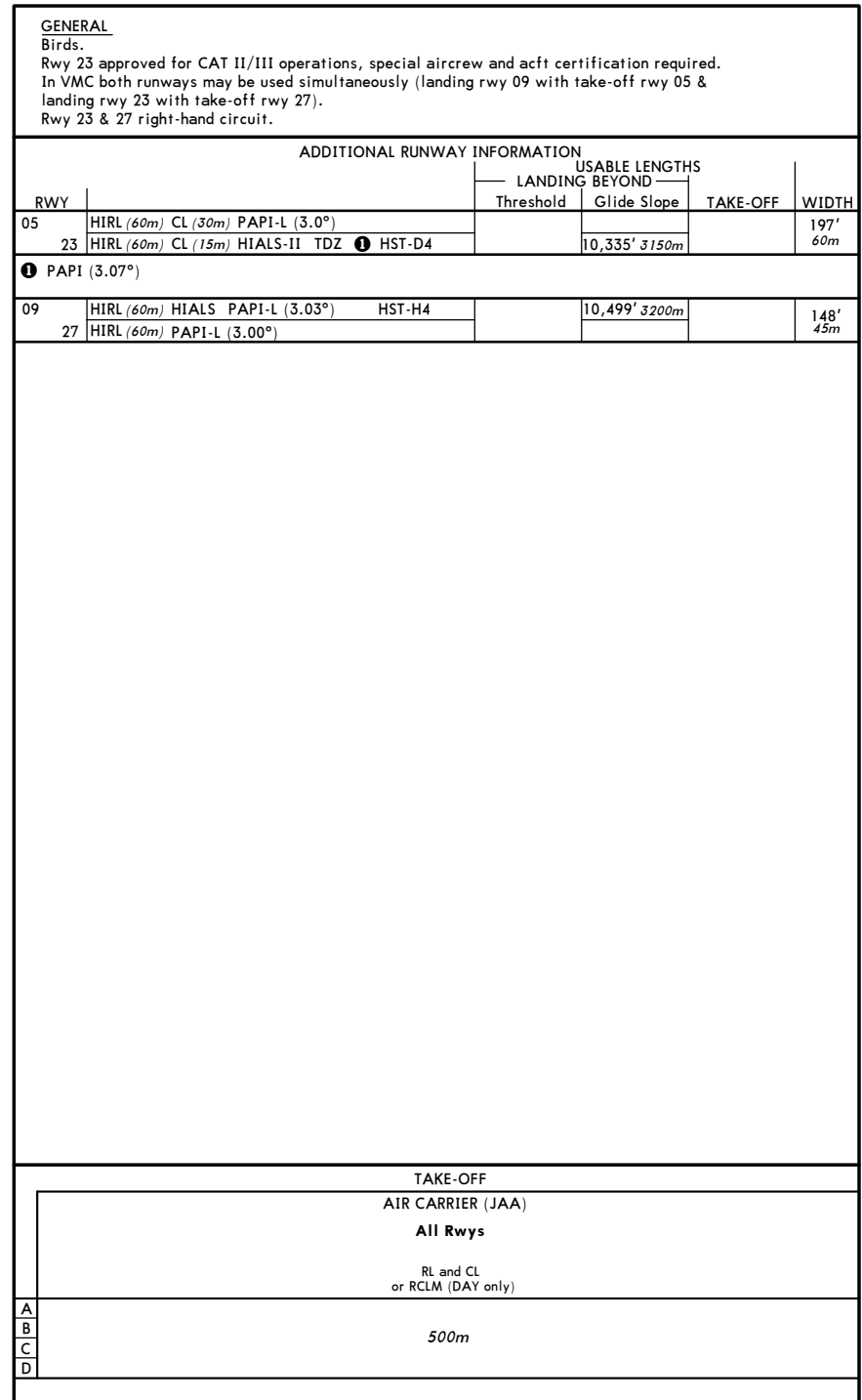
DAAG/ALG



30 JAN 09 (10-9A) Eff 12 Feb

ALGIERS, ALGERIA

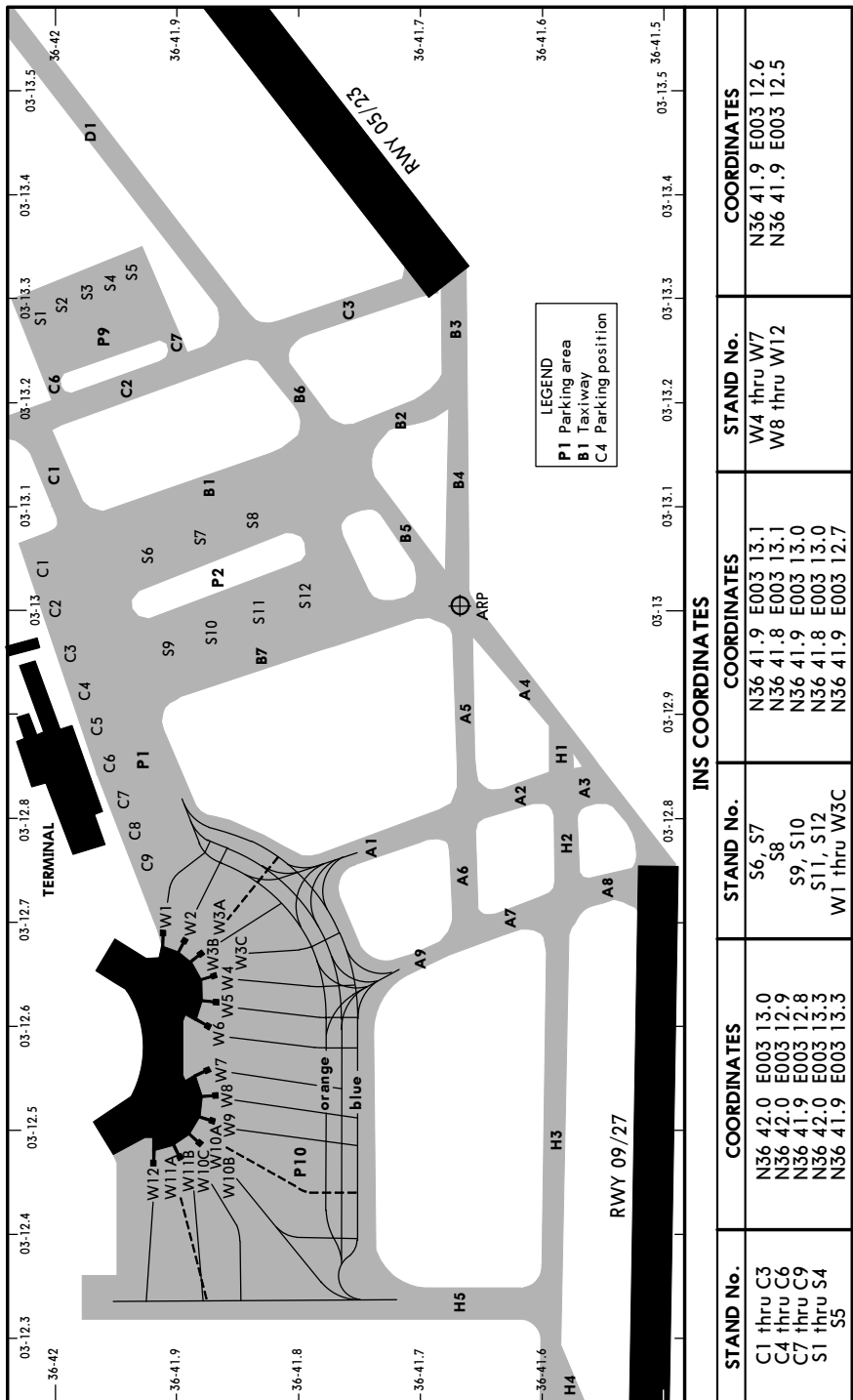
HOUARI BOUMEDIENE



DAAG/ALG

JEPPESEN
 22 AUG 08 (10-9B) Eff 28 Aug

ALGIERS, ALGERIA
 HOUARI BOUMEDIENE



INS COORDINATES

STAND No.	COORDINATES	STAND No.	COORDINATES
C1 thru C3 C4 thru C6 C7 thru C9 S1 thru S4 S5	N36 42.0 E003 13.0 N36 42.0 E003 12.9 N36 41.9 E003 12.8 N36 42.0 E003 13.3 N36 41.9 E003 13.3	S6, S7 S8 S9, S10 S11, S12 W1 thru W3C	N36 41.9 E003 13.1 N36 41.8 E003 13.1 N36 41.9 E003 13.0 N36 41.8 E003 13.0 N36 41.9 E003 12.7
		W4 thru W7 W8 thru W12	N36 41.9 E003 12.6 N36 41.9 E003 12.5

CHANGES: Parking stands.

© JEPPESEN, 2006, 2008. ALL RIGHTS RESERVED.

DAAG/ALG

JEPPESEN
 13 MAR 09 (10-9S)

Standard
 ALGIERS, ALGERIA
 HOUARI BOUMEDIENE

STRAIGHT-IN RWY		A	B	C	D	
05	VOR ①	460'(388')	460'(388')	460'(388')	460'(388')	
		C2400m	C2400m	C2400m	C2800m	
	09	ILS	256'(200')	266'(210')	276'(220')	286'(230')
		FULL	R550m V800m	R550m V800m	R550m V800m	R550m V800m
		Limited	R750m V800m	R750m V800m	R750m V800m	R750m V800m
ALS out	R1200m	R1200m	R1200m	R1200m		
LOC ①	380'(324')	380'(324')	380'(324')	380'(324')		
	R1600m	R1600m	R1600m	R2000m		
VOR ①	460'(404')	460'(404')	460'(404')	460'(404')		
	R1600m	R1600m	R2000m	C2400m		
NDB ①	460'(404')	460'(404')	460'(404')	460'(404')		
	R1600m	R1600m	R2000m	C2400m		
23	CAT 3A ILS	RA50' R200m	RA50' R200m	RA50' R200m	RA50' R200m	
	CAT 2 ILS	182'(100')	182'(100')	182'(100')	182'(100')	
		RA103' R350m	RA103' R350m	RA103' R350m	RA103' R350m	
	ILS	282'(200')	292'(210')	302'(220')	312'(230')	
	ALS out	R800m	R800m	R800m	R800m	
LOC ①	420'(338')	420'(338')	420'(338')	420'(338')		
	R2000m	R2000m	R2000m	C2400m		
VOR ①	490'(408')	490'(408')	490'(408')	490'(408')		
	R2000m	R2000m	C2400m	C2800m		
27	VOR ①	520'(454')	520'(454')	520'(454')	520'(454')	
	R1600m	R1600m	C2100m	C2400m		

① Continuous Descent Final Approach.

CIRCLE-TO-LAND ②	100 KT	135 KT	180 KT	205 KT
	650'(568')	650'(568')	850'(768')	850'(768')
	V1600m ③	V1600m ③	V3600m	V4000m
After apch to Rwy 23	650'(568')	650'(568')	850'(768')	850'(768')
	V2000m	V2000m	V4000m	V4400m

② Not authorized South of airport.

③ or higher minimums of preceding straight-in approach.

TAKE-OFF RWY 05, 09, 23, 27

	RL and CL or RCLM (DAY only)
A	
B	
C	500m
D	

CHANGES: CAT 3A added.

© JEPPESEN, 2009. ALL RIGHTS RESERVED.

DAAG/ALG



JAA MINIMUMS

ALGIERS, ALGERIA
 HOUARI BOUMEDIENE

STRAIGHT-IN RWY		A	B	C	D
05	VOR DME	460' (388')	460' (388')	460' (388')	460' (388')
		V2400m	V2400m	V2400m	V2800m
09	ILS	256' (200')	266' (210')	276' (220')	286' (230')
		800m	800m	800m	800m
	ALS out	1200m	1200m	1200m	1200m
	LOC	380' (324')	380' (324')	380' (324')	380' (324')
		1600m	1600m	1600m	2000m
	ALS out	V2400m	V2400m	V2400m	V2800m
	VOR DME	460' (404')	460' (404')	460' (404')	460' (404')
		1600m	1600m	2000m	V2400m
	ALS out	V2400m	V2400m	V2800m	V3200m
	NDB	460' (404')	460' (404')	460' (404')	460' (404')
1600m		1600m	2000m	V2400m	
ALS out	V2400m	V2400m	V2800m	V3200m	
23	CAT 3A ILS	RA50' R200m	RA50' R200m	RA50' R200m	RA50' R200m
		CAT 2 ILS	182' (100')	182' (100')	182' (100')
		RA103' R350m	RA103' R350m	RA103' R350m	RA103' R350m
	ILS	282' (200')	292' (210')	302' (220')	312' (230')
		800m	800m	800m	800m
	ALS out	1200m	1200m	1200m	1200m
	LOC	420' (338')	420' (338')	420' (338')	420' (338')
		2000m	2000m	2000m	2400m
	ALS out	V2400m	V2400m	V2400m	V2800m
	VOR DME	490' (408')	490' (408')	490' (408')	490' (408')
2000m		2000m	2400m	V2800m	
ALS out	V2400m	V2400m	V2800m	V3200m	
27	VOR DME	520' (454')	520' (454')	520' (454')	520' (454')
		V2400m	V2400m	V2800m	V3200m

CIRCLE-TO-LAND	100 KT	135 KT	180 KT	205 KT
Not authorized South of airport	650' (568')	650' (568')	850' (768')	850' (768')
	V1600m ①②	V1600m ①②	V3600m ③	V4000m ④

- ① After VOR DME 05, LOC 09, VOR DME 09, NDB 09, LOC 23, VOR DME 23 or VOR DME 27 apch: VIS 2400m.
- ② After ILS rwy 23: VIS 2000m.
- ③ After ILS or VOR DME rwy 23: VIS 4000m.
- ④ After ILS or VOR DME rwy 23: VIS 4400m.

TAKE-OFF RWY 05, 09, 23, 27

RL and CL
 or RCLM (DAY only)

A	
B	
C	500m
D	

DAAG/ALG
 HOUARI BOUMEDIENE



ALGIERS, ALGERIA
 VOR DME NDB ILS or
 VOR DME NDB Rwy 09

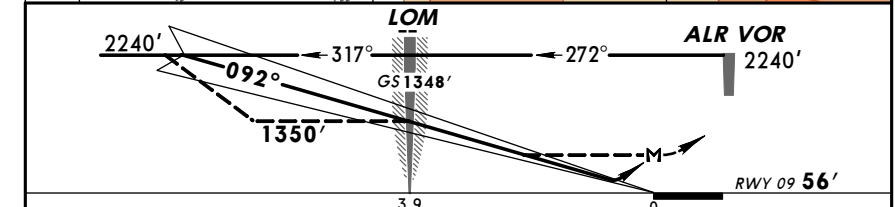
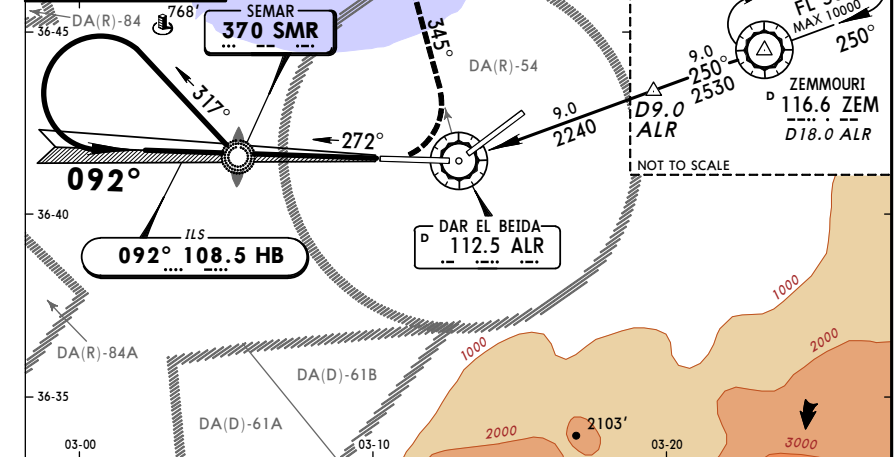
ATIS 128.52		ALGIERS Approach (R) 121.4		ALGIERS Tower 118.7		Ground 121.8	
LOC HB 108.5	Final Apch Crs 092°	GS LOM 1348' (1292')	ILS DA(H) Refer to Minimums NDB MDA(H) 460' (404')	Apt Elev 82'			
NDB SMR 370		Minimum Alt LOM 1350' (1294')		RWY 56'			

MISSED APCH: As soon as possible turn LEFT to climb on R-345 ALR to 3060' and as directed.

Alt Set: MB Rwy Elev: 2 MB Trans level: By ATC Trans alt: 3940'

FT/METER CONVERSION
 QNH

3940' - 1200m
3060' - 930m
2530' - 770m
2240' - 680m
1350' - 410m



Gnd speed-Kts	70	90	100	120	140	160	PAPI VASI	As soon as possible	3060' on 112.5 LT R-345
ILS GS 3.00° or LOC or NDB Desc Grad 5.2%	377	485	539	647	755	862			
LOM to MAP	3.9	3:21	2:36	2:20	1:57	1:40			

PANS OPS 3	STRAIGHT-IN LANDING RWY 09				CIRCLE-TO-LAND		
	ILS		LOC (GS out)		NDB		
	DA(H) A: 256' (200') C: 276' (220') B: 266' (210') D: 286' (230')		MDA(H) 380' (324')		MDA(H) 460' (404')		
A	800m	1200m	ALS out	ALS out	ALS out	Max Kts	
B			1600m	2400m	1600m	2400m	100
C			2000m	2800m	2000m	2800m	135
D			2000m	2800m	2400m	3200m	180
						205	

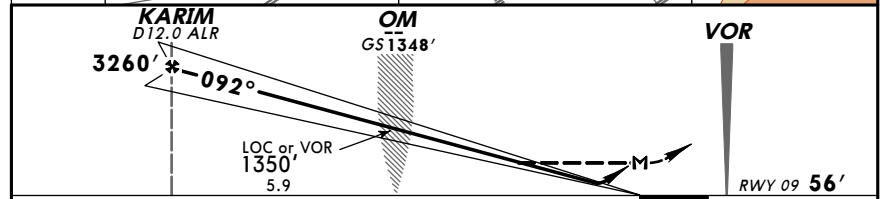
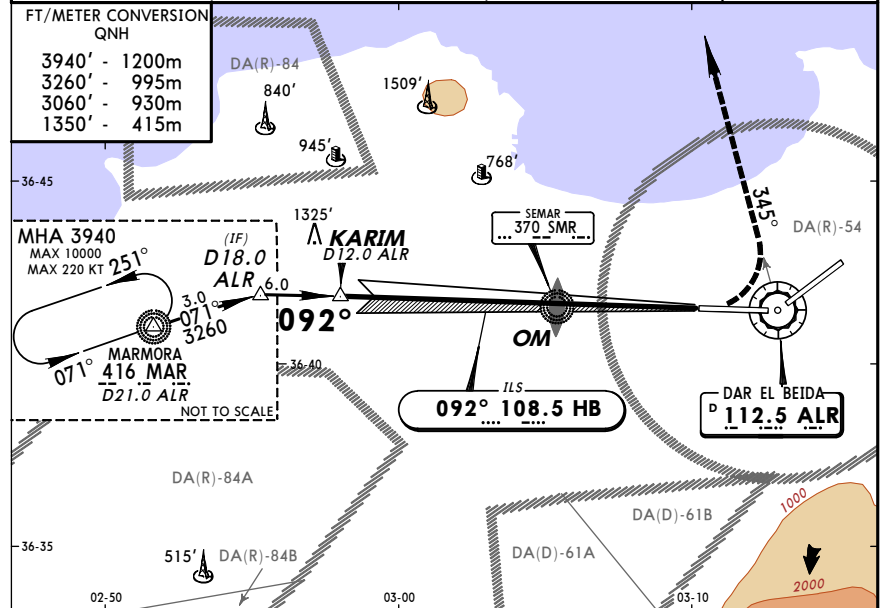
- ① After LOC(GS out) or NDB apch: VIS 2400m.

DAAG/ALG
 HOUARI BOUMEDIENE

JEPPESEN
 30 JAN 09 (11-2) Eff 12 Feb

ALGIERS, ALGERIA
 NDB VOR DME ILS or
 NDB VOR DME Rwy 09

ATIS 128.52		ALGIERS Approach (R) 121.4		ALGIERS Tower 118.7		Ground 121.8	
LOC HB 108.5	Final Apch Crs 092°	GS OM 1348' (1292')	ILS DA(H) Refer to Minimums	Apt Elev 82'			
VOR ALR 112.5	Minimum Alt KARIM 3260' (3204')	VOR MDA(H) 460' (404')	RWY 56'				
MISSED APCH: Turn LEFT to climb on R-345 to 3060' and as directed.							
Alt Set: MB		Rwy Elev: 2 MB		Trans level: By ATC		Trans alt: 3940'	



Gnd speed-Kts	70	90	100	120	140	160	HIALS 3060' ALR PAPI VASI LT on 112.5 R-345
ILS GS 3.00° or LOC or VOR Desc Grad 5.2%	377	485	539	647	755	862	
OM to MAP	3.9	3:21	2:36	2:20	1:57	1:40	1:28

STRAIGHT-IN LANDING RWY 09				CIRCLE-TO-LAND							
ILS A: 256' (200') C: 276' (220') B: 266' (210') D: 286' (230')				LOC (GS out) A: 380' (324') B: 460' (404')				Not authorized South of airport			
FULL				ALS out				Max Kts			
800m				1200m				100			
				1600m				135			
				2000m				180			
				2400m				205			
				2800m							
				3200m							

After LOC(GS out) or VOR apch: VIS 2400m.
 CHANGES: ATIS added. © JEPPESEN, 1999, 2009. ALL RIGHTS RESERVED.

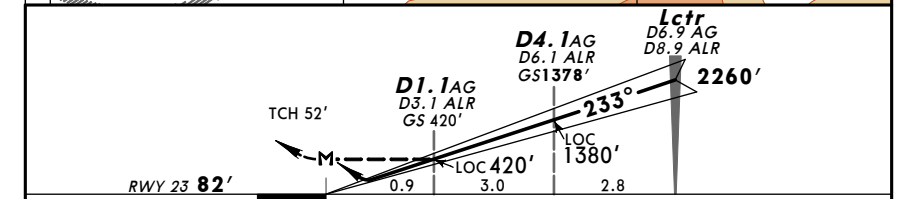
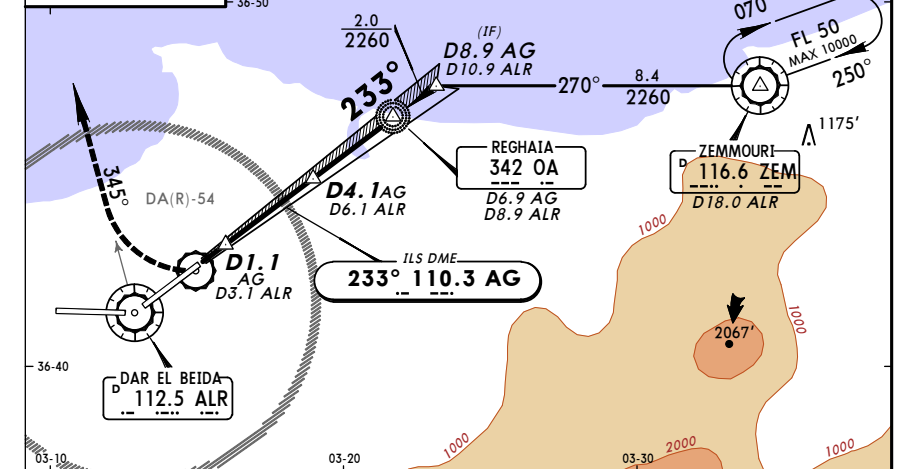
DAAG/ALG
 HOUARI BOUMEDIENE

JEPPESEN
 30 JAN 09 (11-3) Eff 12 Feb

ALGIERS, ALGERIA
 VOR DME ILS Rwy 23

ATIS 128.52		ALGIERS Approach (R) 121.4		ALGIERS Tower 118.7		Ground 121.8	
LOC AG 110.3	Final Apch Crs 233°	GS D4.1 AG 1378' (1296')	ILS DA(H) Refer to Minimums	Apt Elev 82'			
MISSED APCH: Climb STRAIGHT AHEAD to 480', then turn RIGHT onto R-345 ALR, maintain 2470' and as directed.		Minimum Alt KARIM 3260' (3204')		VOR MDA(H) 460' (404')			
Alt Set: MB		Rwy Elev: 3 MB		Trans level: By ATC		Trans alt: 3940'	

FT/METER CONVERSION QNH			
3940' - 1200m	2470' - 750m	2260' - 688m	1380' - 420m
3260' - 995m	480' - 145m	420' - 128m	



Gnd speed-Kts	70	90	100	120	140	160	HIALS-II 480' 2470' ALR PAPI PAPI RT onto 112.5 R-345
ILS GS 3.00° or LOC Descent Gradient 5.2%	377	485	539	647	755	862	
Lctr to MAP	6.7	5:45	4:28	4:01	3:21	2:52	2:31

STRAIGHT-IN LANDING RWY 23				CIRCLE-TO-LAND							
ILS A: 282' (200') C: 302' (220') B: 292' (210') D: 312' (230')				LOC (GS out) A: 420' (338')				Not authorized South of airport			
FULL				ALS out				Max Kts			
800m				1200m				100			
				2000m				135			
				2400m				180			
				2800m				205			
				3200m							

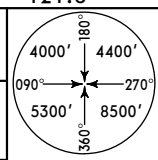
After LOC(GS out) apch: VIS 2400m.
 CHANGES: ATIS added. © JEPPESEN, 1999, 2009. ALL RIGHTS RESERVED.

DAAG/ALG **ALGIERS, ALGERIA**
HOUARI BOUMEDIENE **CAT II VOR DME ILS Rwy 23**

30 JAN 09
 Eff 12 Feb

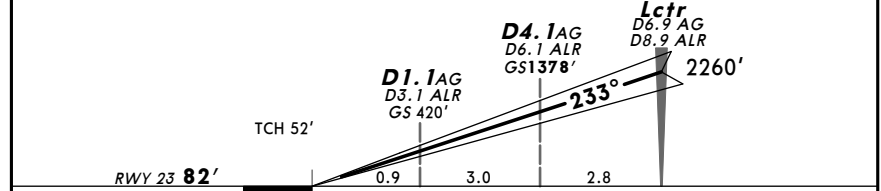
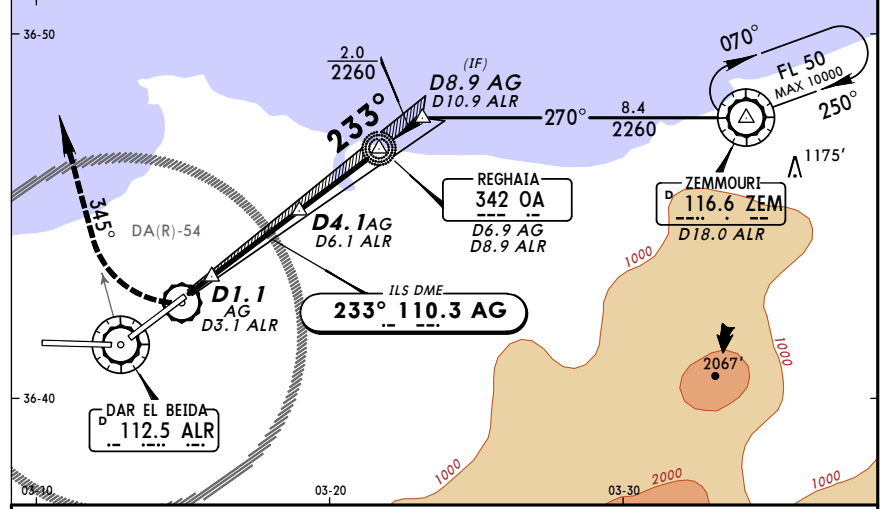
JEPPesen
 (11-3A)

ATIS 128.52		ALGIERS Approach (R) 121.4		ALGIERS Tower 118.7		Ground 121.8	
LOC AG 110.3	Final Apc Crs 233°	GS D4.1 AG 1378' (1296')	CAT II ILS RA 103' DA(H) 182' (100')		Apt Elev 82'	RWY 82'	



MISSED APCH: Climb STRAIGHT AHEAD to 480', then turn RIGHT onto R-345 ALR, maintain 2470' and as directed.

Alt Set: MB	Rwy Elev: 3 MB	Trans level: By ATC	Trans alt: 3940'	MSA ZEM VOR
-------------	----------------	---------------------	------------------	-------------



Gnd speed-Kts	70	90	100	120	140	160	HIALS-II PAPI	480'	2470'	ALR R-345
Gs	3.00°	377	484	538	646	753				

STRAIGHT-IN LANDING RWY 23
 CAT II ILS
 ABCD
 RA 103'
 DA(H) 182' (100')

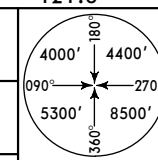
RVR 350m

DAAG/ALG **ALGIERS, ALGERIA**
HOUARI BOUMEDIENE **VOR DME Rwy 05**

30 JAN 09
 Eff 12 Feb

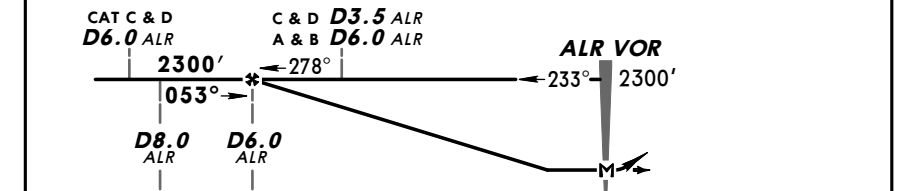
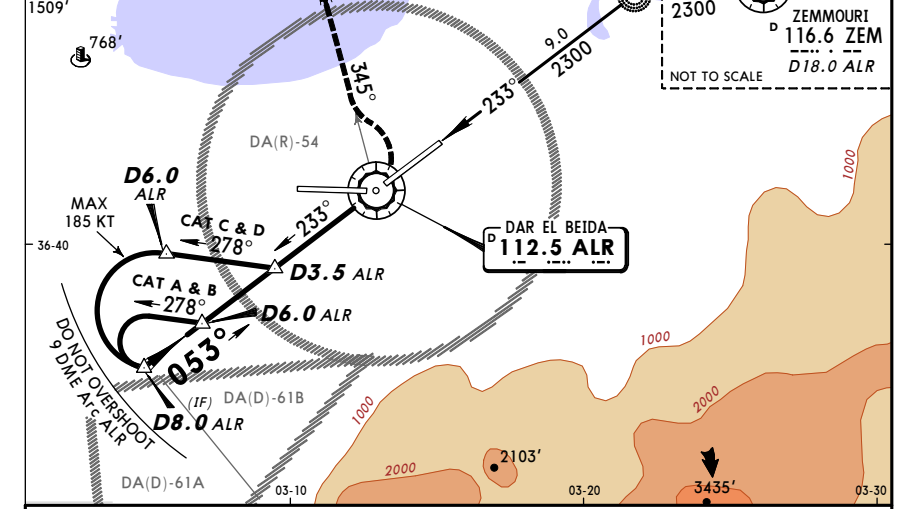
JEPPesen
 (13-1)

ATIS 128.52		ALGIERS Approach (R) 121.4		ALGIERS Tower 118.7		Ground 121.8	
VOR ALR 112.5	Final Apc Crs 053°	Minimum Alt D6.0 ALR 2300' (2228')	MDA(H) 460' (388')	Apt Elev 82'	RWY 72'		



MISSED APCH: Turn LEFT to intercept R-345 ALR, maintain 3060' and as directed.

Alt Set: MB	Rwy Elev: 3 MB	Trans level: By ATC	Trans alt: 3940'	MSA ZEM VOR
-------------	----------------	---------------------	------------------	-------------



Gnd speed-Kts	70	90	100	120	140	160	PAPI-L	LT	ALR R-345
Descent Gradient	5.7%	404	520	577	693	808			

STRAIGHT-IN LANDING RWY 05
 C & D D3.5 ALR
 A & B D6.0 ALR
 MDA(H) 460' (388')

CIRCLE-TO-LAND		Not authorized South of airport	
	Max Kts	MDA(H)	
A	100	650' (568')	2400m
B	135	850' (768')	3600m
C	180	850' (768')	4000m
D	205	850' (768')	4000m

DAAG/ALG
 HOUARI BOUMEDIENE

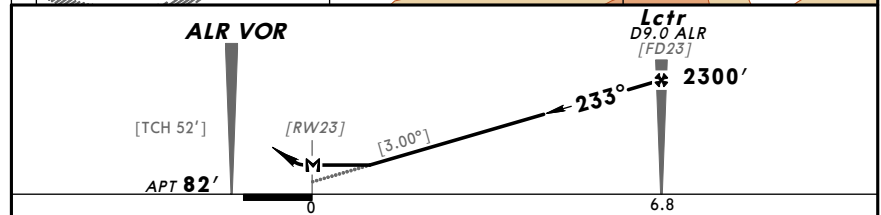
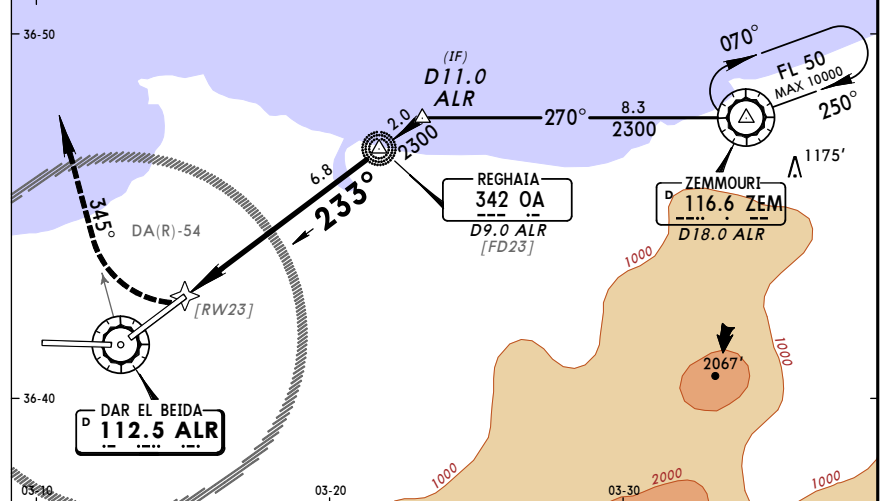
JEPPESEN
 30 JAN 09 (13-2) Eff 12 Feb

ALGIERS, ALGERIA
 VOR DME Rwy 23

ATIS 128.52		ALGIERS Approach (R) 121.4		ALGIERS Tower 118.7		Ground 121.8	
VOR ALR 112.5	Final Apch Crs 233°	Minimum Alt Lctr 2300' (2218')	MDA(H) 490' (408')	Apt Elev 82'			

MISSED APCH: Climb STRAIGHT AHEAD to 480', then turn RIGHT onto R-345 ALR, maintain 2470' and as directed.

Alt Set: MB	Rwy Elev: 3 MB	Trans level: By ATC	Trans alt: 3940'	MSA ZEM VOR
FT/METER CONVERSION QNH 3940' - 1200m 2470' - 750m 2300' - 700m 480' - 145m				



Gnd speed-Kts	70	90	100	120	140	160	HIALS-II	480'	2470'	ALR
Descent Gradient	5.24% or [3.00°]						PAPI	↑	RT	onto 112.5
Lctr to MAP	6.8	5:50	4:32	4:05	3:24	2:55	2:33			R-345

STRAIGHT-IN LANDING RWY 23				CIRCLE-TO-LAND Not authorized South of airport	
MDA(H) 490' (408')				MDA(H)	
A	2000m	2400m	Max Kts 100	650' (568')	2400m
B			135		
C	2400m	2800m	180	850' (768')	4000m
D	2800m	3200m	205	850' (768')	4400m

DAAG/ALG
 HOUARI BOUMEDIENE

JEPPESEN
 30 JAN 09 (13-3) Eff 12 Feb

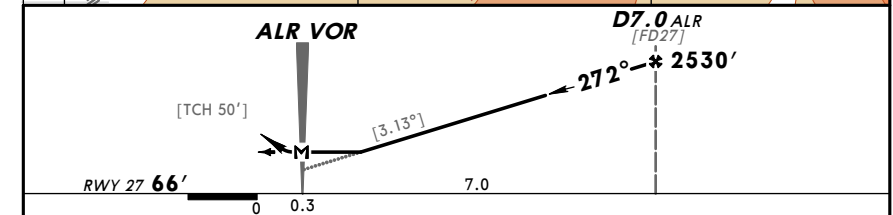
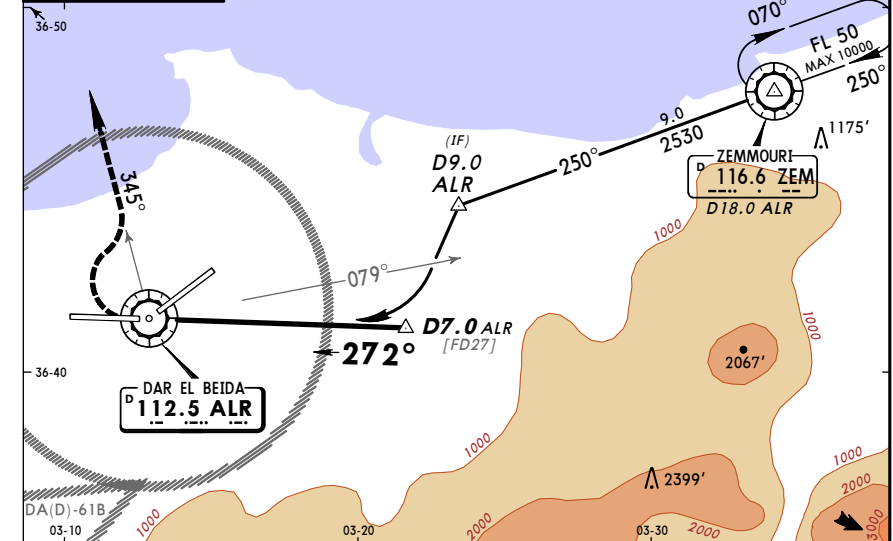
ALGIERS, ALGERIA
 VOR DME Rwy 27

ATIS 128.52		ALGIERS Approach (R) 121.4		ALGIERS Tower 118.7		Ground 121.8	
VOR ALR 112.5	Final Apch Crs 272°	Minimum Alt D7.0 ALR 2530' (2464')	MDA(H) 520' (454')	Apt Elev 82'	RWY 66'		

MISSED APCH: Climbing turn RIGHT onto R-345 ALR, maintain 2470' and as directed.

Alt Set: MB	Rwy Elev: 2 MB	Trans level: By ATC	Trans alt: 3940'	MSA ZEM VOR
-------------	----------------	---------------------	------------------	-------------

FT/METER CONVERSION QNH 3940' - 1200m 2530' - 770m 2470' - 750m				
---	--	--	--	--



Gnd speed-Kts	70	90	100	120	140	160	HIALS-II	480'	2470'	ALR
Descent Gradient	5.46% or [3.13°]						PAPI-L	↑	RT	onto 112.5
Lctr to MAP	6.8	5:50	4:32	4:05	3:24	2:55	2:33			R-345

STRAIGHT-IN LANDING RWY 27				CIRCLE-TO-LAND Not authorized South of airport	
MDA(H) 520' (454')				MDA(H)	
A	2400m	2400m	Max Kts 100	650' (568')	2400m
B			135		
C	2400m	2800m	180	850' (768')	3600m
D	2800m	3200m	205	850' (768')	4000m